

2-1-2016

Both Sides Now

Lexa Walsh

Dan Walsh

Follow this and additional works at: https://pdxscholar.library.pdx.edu/both_sides

Let us know how access to this document benefits you.

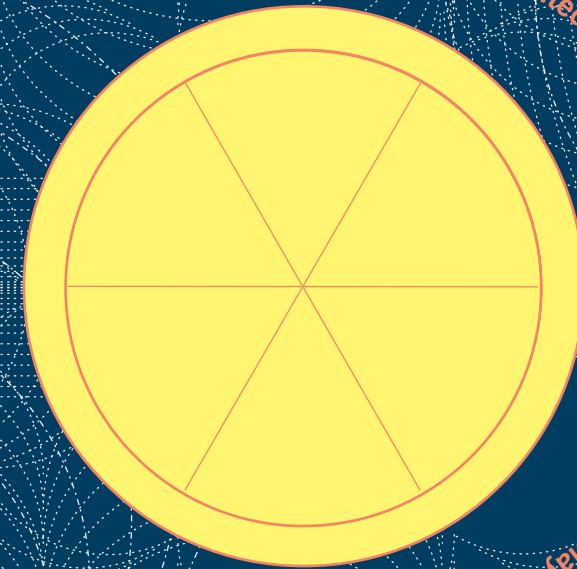
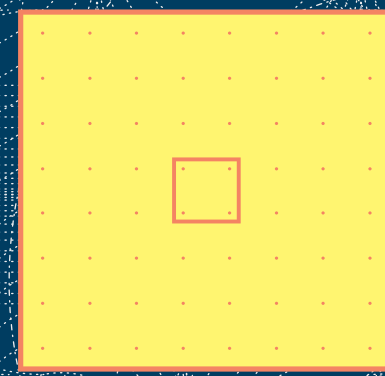
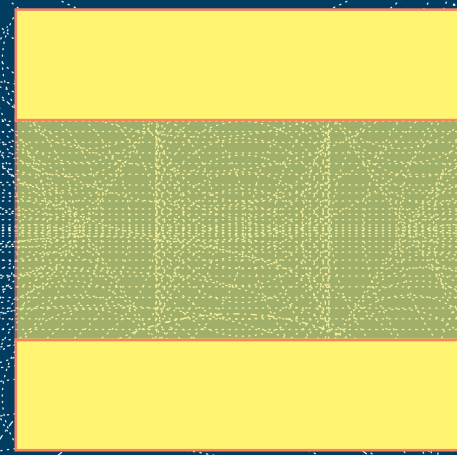
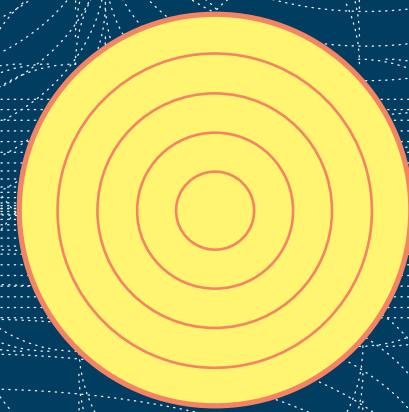
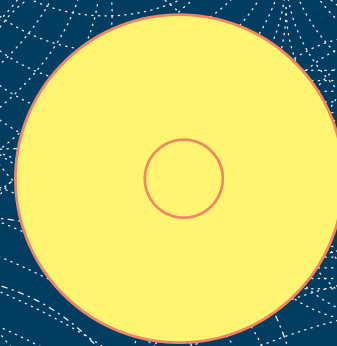
Recommended Citation

Walsh, Lexa and Walsh, Dan, "Both Sides Now" (2016). *Both Sides Now*. 1.
https://pdxscholar.library.pdx.edu/both_sides/1

This Book is brought to you for free and open access. It has been accepted for inclusion in Both Sides Now by an authorized administrator of PDXScholar. Please contact us if we can make this document more accessible:
pdxscholar@pdx.edu.

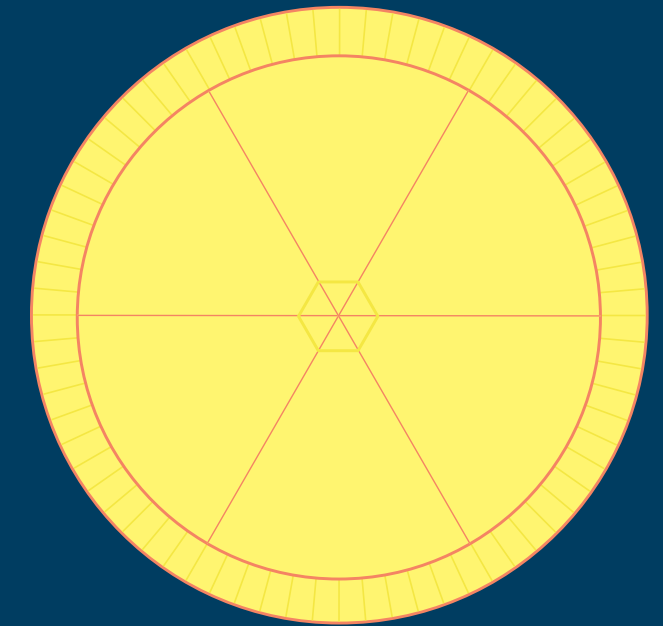
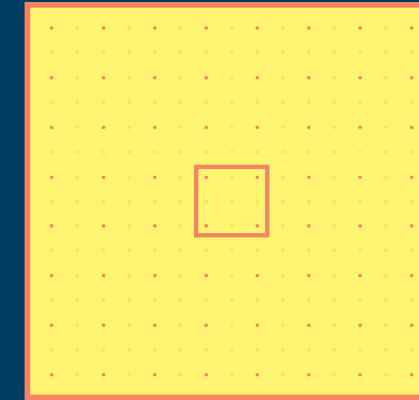
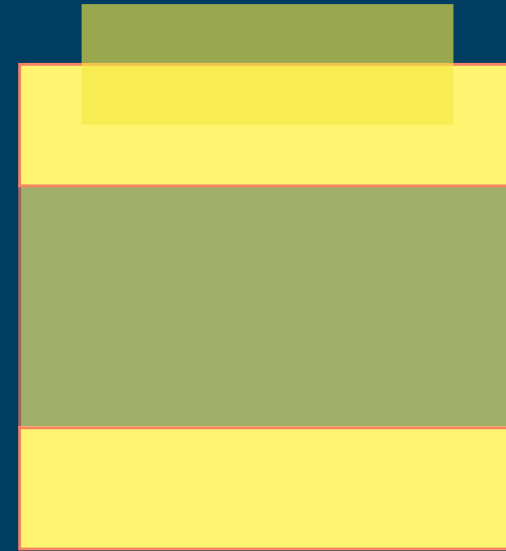
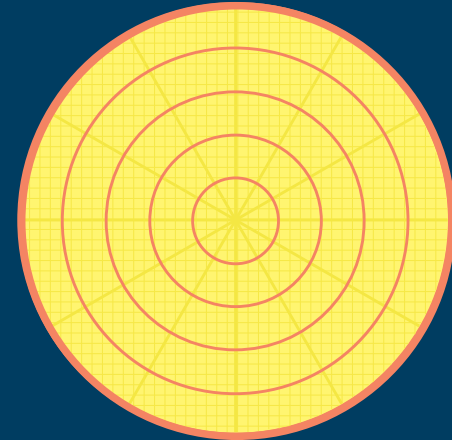
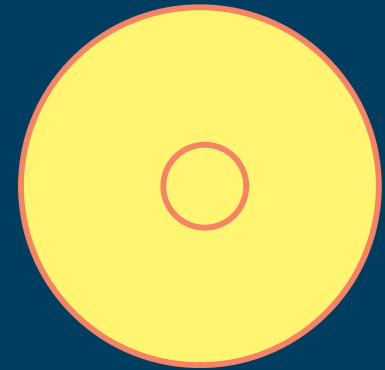
In "Both Sides Now" we wanted to create an interactive and participatory experience with WCMA's collection. We culled hundreds of objects to represent the diversity of the collection. Our selection spans media, age, geography, significance and condition. We envisioned an installation as a spectacle in a symbolic and meaningful backdrop. The stage has been set for a new line of inquiry into the collection. Although we agree on many things, we approach art and the institution in distinctly different ways. We created an installation that embraces this dynamic. Our distinct creative backgrounds brought about a lively dialogue and process.

In "Both Sides Now" we wanted to create an interactive and participatory experience with WCMA's collection. We culled hundreds of objects to represent the diversity of the collection. Our selection spans media, age, geography, significance and condition. We envisioned an installation as a spectacle in a symbolic and meaningful backdrop. The stage has been set for a new line of inquiry into the collection. Although we agree on many things, we approach art and the institution in distinctly different ways. We created an installation that embraces this dynamic. Our distinct creative backgrounds brought about a lively dialogue and process.



We changed and challenged contexts to open up new interpretations and offer up a variety of ways to look at art. Instead of asking the Who, What, When, and Where of the individual objects, we asked, How do these objects interact with each other and with museum visitors? In addition to curating works of art, it was very important that we make some of the art ourselves. We wanted to create forms that would house and display the objects we selected. The stage has been set for a new line of inquiry into the collection. Although we agree on many things, we approach art and the institution in distinctly different ways. We created an installation that embraces this dynamic. Our distinct creative backgrounds brought about a lively dialogue and process.

We changed and challenged contexts to open up new interpretations and offer up a variety of ways to look at art. Instead of asking the Who, What, When, and Where of the individual objects, we asked, How do these objects interact with each other and with museum visitors? In addition to curating works of art, it was very important that we make some of the art ourselves. We wanted to create forms that would house and display the objects we selected. The stage has been set for a new line of inquiry into the collection. Although we agree on many things, we approach art and the institution in distinctly different ways. We created an installation that embraces this dynamic. Our distinct creative backgrounds brought about a lively dialogue and process.



United Nations of Questionable Provenance Seek the Blue Beam at The Bohemian Grove

Ancient – 20th century

Fiberglass, steel, aluminum, bronze, stone, faïence, terracotta, marble, gilt, wood, hair, glass beads, gesso, paint, watercolor, ceramic and terracotta figurines

Greek, Greek?, American, French, Archaic, Boeotian, Coptic?, Corinthian, Anatolian, Costa Rican, Made in China, Egyptian, Peruvian?, Roman, Roman? and Venetian?

Veiled Vessel for Vessels

ca. 600 BC – 1994

Copper, ceramic vessels

American, Attic Greek, Etruscan, Mayan, Mexican, Peruvian and Roman

For holding, fine art purposes, drinking, incense and oil burning.

Mirrored Meeting Place, Intimate Encounters with Silhouettes, Rites of Passage and Prayer

Ancient dynasties ca. 945 BC – 21st century

Drywall, Dinanderie, aluminum, glass, steel, copper, ceramic, wood, paint, brass, solder, plastic, metal, gilt, objects of funerary, religious, ritualistic, figurative, abstract and book-ending purpose

Akan, American, Chinese, Egyptian, Etruscan, French, Greek, Mende, Mexican, Nago, Peruvian, and Roman

Pooches Protecting and Reflecting

Recently, last century

Wood, steel, aluminum, plastic, glass, ceramic, signs, reflectors, mirrors, light bulbs, dogs

England, Made in China

Temple for Diana, Trapped

ca. 1899 – 1907

Wood, iron, steel, aluminum, fiberglass, terra cotta, concrete, glass, velvet, polyester, bronze figure

American

