

8-2010

Oregon Freight Data Mart

Miguel A. Figliozi
Portland State University, figliozi@pdx.edu

Robert Bertini
Portland State University

Follow this and additional works at: https://pdxscholar.library.pdx.edu/trec_reports



Part of the [Management Information Systems Commons](#), [Transportation Commons](#), and the [Urban Studies and Planning Commons](#)

Let us know how access to this document benefits you.

Recommended Citation

Figliozi, Miguel and Robert Bertini. Oregon Freight Data Mart. OTREC-RR-10-09. Portland, OR: Transportation Research and Education Center (TREC), 2010. <https://doi.org/10.15760/trec.12>

This Report is brought to you for free and open access. It has been accepted for inclusion in TREC Final Reports by an authorized administrator of PDXScholar. Please contact us if we can make this document more accessible: pdxscholar@pdx.edu.



OREGON
TRANSPORTATION
RESEARCH AND
EDUCATION CONSORTIUM

Oregon Freight Data Mart

OTREC-RR-10-09
August 2010

OREGON FREIGHT DATA MART

Final Report

OTREC-RR-10-09

by

Miguel Figliozzi, Ph.D.
Kristin Tufte, Ph.D.
Portland State University

Civil and Environmental Engineering
Portland State University

for



P.O. Box 751
Portland, OR 97207

August 2010

Technical Report Documentation Page

1. Report No. OTREC-RR-10-09	2. Government Accession No.	3. Recipient's Catalog No.	
4. Title and Subtitle Oregon Freight Data Mart		5. Report Date August 2010	
		6. Performing Organization Code	
7. Author(s) Miguel Figliozzi Portland State University Civil and Environmental Engineering P.O. Box 751 Portland, OR, 97207		8. Performing Organization Report No.	
9. Performing Organization Name and Address		10. Work Unit No. (TRAIS)	
		11. Contract or Grant No.	
12. Sponsoring Agency Name and Address Oregon Transportation Research and Education Consortium (OTREC) P.O. Box 751 Portland, Oregon 97207		13. Type of Report and Period Covered	
		14. Sponsoring Agency Code	
15. Supplementary Notes			
16. Abstract Increasing freight volumes are adding pressure to the Oregon transportation system. Monitoring the performance of the transportation system and freight movements is essential to guarantee the economic development of the region, the efficient allocation of resources, and the quality of life of all Oregonians. Freight data is expensive to collect and maintain. Confidentiality issues, the size of the datasets, and the complexity of freight movements are barriers that preclude the easy access and analysis of freight data. Data accessibility and integration is essential to ensure successful freight planning and consistency across regional partner agencies and planning organizations. In relation to Internet-based mapping technology in freight data collection and planning, the main objectives of this project are: (a) address implementation issues associated with data integration, (b) present a system architecture to leverage existing publically-available interfaces and web applications to accelerate product development and reduce costs, (c) describe an existing web-based mapping prototype and its capabilities, (d) state lessons learned and present suggestions to streamline the integration and visualization of freight data, and (e) discuss load-time and display quality issues associated with the visualization of transportation data on internet-based mapping applications. The strategies and methodologies described in this report are equally applicable to the display of areas such as states or counties as well as linear data such linear data such as highways, waterways, and railways. Despite data integration challenges, Internet-based mapping provides a cost effective and appealing tool to store, access, and communicate freight data as well as enhance our understanding of freight issues. Institutional barriers, not technology, are the most demanding hurdles to widely implementing a freight data web-based mapping application in the near future.			
17. Key Words Freight Data, Visualization, Integration, Internet Mapping		18. Distribution Statement No restrictions. Copies available from OTREC: www.otrec.us	
19. Security Classification (of this report) Unclassified	20. Security Classification (of this page) Unclassified	21. No. of Pages 60	22. Price

ACKNOWLEDGEMENTS

The authors gratefully acknowledge the Oregon Transportation Research and Education Consortium (OTREC) for sponsoring this project. This work also was supported by the Department of Civil and Environmental Engineering in the Maseeh College of Engineering and Computer Science at Portland State University. In addition, the authors are thankful to the reviewers and editors for their helpful comments and suggestions, and to research assistant Scott Fletcher for his comments and efforts. Any errors or omissions are the sole responsibility of the authors.

DISCLAIMER

The contents of this report reflect the views of the authors, who is solely responsible for the facts and the accuracy of the material and information presented herein. This document is disseminated under the sponsorship of the U.S. Department of Transportation University Transportation Centers Program and the Oregon Transportation Research and Education Consortium (OTREC) in the interest of information exchange. The U.S. Government assumes no liability for the contents or use thereof. The contents do not necessarily reflect the official views of the U.S. Government. This report does not constitute a standard, specification, or regulation.

TABLE OF CONTENTS

EXECUTIVE SUMMARY	9
1.0 INTRODUCTION.....	11
2.0 PROJECT VISION AND SYSTEM ARCHITECTURE.....	13
2.1 CURRENT DATA SOURCES AND CHARACTERISTICS.....	14
2.1.1 Port of Portland.....	15
2.1.2 PORTAL Data Source	16
2.1.3 Other Data Sources	16
3.0 INTEGRATION AND IMPLEMENTATION CHALLENGES.....	17
3.1 GEO-LOCATION.....	17
3.2 RAW DATA VS. DOCUMENTS AND IMAGES	17
3.3 MAPS.....	18
3.4 DATA OVERLAP	18
3.5 SYSTEM MAINTENANCE AND INFORMATION OVERLOAD.....	19
4.0 DATA VISUALIZATION CAPABILITIES	21
4.1 TRUCK INCIDENTS.....	22
4.2 TRUCK VOLUME.....	22
4.3 HIGHWAY SPEED AND RELIABILITY	25
4.4 GOOGLE SERVICES	25
5.0 RECOMMENDATIONS FOR FREIGHT DATA COLLECTION	27
6.0 TRANSPORTATION DATA LEVELS OF DETAIL.....	29
7.0 NUMBER OF POINTS, LOAD-TIME, AND QUALITY TRADEOFFS	31
7.1 DATA CONVERSION STRATEGIES.....	31
7.2 PROJECTION.....	32
7.3 VERTICES TO POINTS	33
7.4 SIMPLIFICATION STRATEGIES.....	34
8.0 ALGORITHMIC SIMPLIFICATION METHODS.....	37
8.1 THE LAT/LONG DIFFERENCES ALGORITHM	37
8.2 THE DISTANCE ALGORITHM.....	37
8.3 THE TRIANGULATION ALGORITHM.....	37
8.4 THE DOUGLAS-PEUCKER ALGORITHM	38
8.5 SIMPLIFICATION SOFTWARE	39
9.0 RESULTS AND DISCUSSION	41
10.0 CONCLUSIONS	45
11.0 REFERENCES.....	47
APPENDIX A.....	51
QUICK INSTRUCTIONS TO ADD A LAYER TO THE OFDM GOOGLE MAPS APPLICATION	51
APPENDIX B	53
QUICK INSTRUCTIONS TO CONVERT A SHAPEFILE TO A DATABASE TABLE SUITABLE FOR GOOGLE MAPS.....	53

APPENDIX C **55**
 QUICK INSTRUCTIONS TO ADD A POLYGON LAYER..... 55
APPENDIX D **57**
 QUICK INSTRUCTIONS TO CONVERT A DATABASE TABLE TO A SHAPEFILE TO57
APPENDIX E **59**
 QUICK INSTRUCTIONS TO ADD THE FHWA BOTTLENECK LAYER ORIGINAL
 DATA AND MARKERS 59

LIST OF TABLES

Table 1. OFDM Data Sources.....	15
Table 2. Comparison of the four algorithms for Oregon Counties 300,000 points	30
Table 3. Algorithm Result Comparison	33

LIST OF FIGURES

Figure 1. The OFDM System.....	14
Figure 2. Freight Data Mart Main Screen	21
Figure 3. Truck Incident Display	22
Figure 4. Truck Volume Display – Map View	23
Figure 5. Truck Volume Display – Detail for I-5 at Interstate Bridge	23
Figure 6. Highway Speed and Reliability Display.....	24
Figure 7. Google Street View of Incident Location.....	25
Figure 8. Levels of Geographic Detail.....	30
Figure 9. Country map of the world before and after simplification	31
Figure 10. Topological integrity damaged due to oversimplification.....	35
Figure 11. Visual comparison among simplification algorithms.....	42

EXECUTIVE SUMMARY

This report presents the issues surrounding the integration and visualization of freight data using Internet-based mapping applications. An Internet-based mapping system is utilized to provide geographic context and user-friendly information to transportation planning decision makers. A key goal is to provide an intuitive application that requires a minimal learning curve yet provides powerful geographic and contextual metadata.

In relation to Internet-based mapping technology in freight data collection and planning, this report: (a) addresses implementation issues associated with data integration, (b) presents a system architecture to leverage existing publicly available interfaces and web applications to accelerate product development and reduce costs, (c) describes an existing web-based mapping prototype and its capabilities, (d) states lessons learned and present suggestions to streamline the integration and visualization of freight data, and (e) discusses load-time and display quality issues associated with the visualization of transportation data on Internet-based mapping applications.

The strategies and methodologies described in this report are equally applicable to the display of areas such as states or counties as well as linear data such as highways, waterways, and railways. Despite data integration challenges, Internet-based mapping provides a cost-effective and appealing tool to store, access, and communicate freight data as well as enhance general understanding of freight issues. Institutional barriers, not technology, are the most demanding hurdles to widely implementing a freight data, web-based mapping application in the near future.

1.0 INTRODUCTION

Public decision makers require a comprehensive picture of freight movements to understand how freight transportation supports economic development, how land use affects freight transportation, and the impacts of transportation infrastructure supply on private-sector freight and commercial activity. The need to integrate and coordinate freight data collection efforts is widely accepted and recognized (TRB., 2003). Freight data is available from many public and private sources. However, the data may significantly vary in terms of collection method, timeframe, format, and quality. The lack of coordination not only prevents the seamless integration of data sources, but also limits the scope and quality of transportation studies.

Over the last 15 years, the ability to collect freight data has significantly expanded through developments in electronics, information and communication technology, and Global Positioning System (GPS) technology. The ability to represent freight data has been greatly enhanced by the development of Geographic Information Systems (GIS) to manipulate and display transportation data at distinct levels of spatial and temporal resolution (Fletcher, 2000). More recently, the development of Internet-based geographic data visualization platforms (e.g., Google Earth) has dramatically expanded the ability to disseminate and access data (Butler, 2006).

The benefits of sharing maps and spatial data among public agencies are well established (Jacoby et al., 2002). Data and map sharing brings about significant reductions in maintenance activity, increases adoption of GIS technologies, and improves information access and accuracy. Maps and data sharing in GIS transportation (GIS-T) networks require unified and standard semantics, data models, and acquisition methods. For example, a clear semantic hierarchy allows higher-order data networks, such as a state highway system, to receive real-time updates reflecting any database changes from local government agencies, such as modifications along a local road network (Dueker and Butler, 1998, Dueker and Butler, 2000). Without common standards and semantics, agencies must devote time and resources to the error-prone and expensive process of data conversion (Abdelmoty and Jones, 1997, Cobb et al., 1998). Similar hierarchies and relations are crucial when sharing multimodal network data (e.g., linking of transit operational data to a road network) (Trépanier and Chapleau, 2001) or the integration of GIS-T applications and transportation asset management (Darter et al., 2007).

Technological developments in Internet-based mapping tools are creating new challenges and opportunities to collect and communicate freight data. The application of GIS-T to freight has been mostly limited to the display and analysis of truck accident data (Harkey, 1999, Chien et al., 2002) and truck volumes (Casavant et al., 1995, Alam and Fekpe, 1998). The combination of GIS-T and GPS-based data also have been successfully applied to the monitoring of intercity truck movements (McCormack and Hallenbeck, 2006, FHWA, 2006), complementing commercial vehicle surveys (SURESHAN, 2006), and to the study of commercial vehicle tours in urban areas (Greaves and Figliozzi, 2008). The private sector is swiftly adopting GPS-based

technologies, where the monitoring of freight vehicles and containers across the continental U.S. has the potential to reduce cargo damage, control driver behavior, and reduce freight theft (Elango et al., 2007) (Ramachandran and Klodzinski, 2007).

The aim of this research is to highlight the advantages and challenges of using Internet-based spatial data tools and technologies for integrating and visualizing freight transportation data; a working prototype and its system architecture also are presented. Lessons learned from the prototype implementation and recommendations to improve future data collection and visualization efforts are discussed.

While the collection and integration of transportation data presents its own problems, the final sections of this report focuses on the issues and tradeoffs surrounding the visualization of transportation data. More specifically, the challenges involve designing an intuitive and informative web application that contains a suitable level of detail and also reduces load-times to user-accepted levels. The fidelity or quality of any map grows with the number of utilized points. However, as the number of points grows, the load-time or wait-time for the end user also grows. This report shares the research team's experience with four algorithms to simplify polygons and reduce load-times. These algorithms are evaluated using two criteria: (a) total load-time and (b) quality or the ability to produce visually appealing and appropriate shapes that maintain a sufficient level of topological integrity.

The report is organized as follows: Section 2.0 describes the project vision, its system architecture, and data sources. Section 3.0 discusses implementation and data integration challenges. Section 4.0 describes visualization capabilities of the prototype. Section 5.0 presents recommendations for data collection. Section 6.0 discusses transportation data levels of detail. Section 7.0 analyzes tradeoffs among mapping quality and loading times. Section 8.0 introduces algorithms to speed up loading times and simplify polygons. Section 9.0 presents results regarding loading times in different Internet environments. Section 10.0 offers conclusions. Several appendices describe common operations used in the manipulation of transportation and geographic data.

2.0 PROJECT VISION AND SYSTEM ARCHITECTURE

The system described herein, the Oregon Freight Data Mart (OFDM), is under continuous development¹. A primary goal of the OFDM is to provide an online environment to integrate, visualize, and disseminate freight data in the state of Oregon. It was clear from the outset of the OFDM project that the prototype should handle a diverse set of existing and future data sources and types. A clear vision to make the application flexible and cost-effective included the following goals: (a) to provide an intuitive application with minimal user learning, (b) to have powerful visualization and geographical capabilities, (c) to facilitate freight data integration, and (d) to design a system that can leverage existing publicly available Internet applications in order to accelerate product development and reduce costs.

The OFDM is a data visualization tool based on Google Maps® (GM). GM was chosen for visualization because it can be used to combine different types of data and can be accessed by any user from any Internet browser. The intuitive and user-friendly characteristics of GM provide an excellent platform to tailor the display of information. GM fulfills the ease-of-use and visualization requirements of the OFDM, including the ability to integrate images such as maps, graphics or digital photos, external links, and HTML content. The user interface also enables integrated visualization of data sources using multiple hierarchical layers and clickable links that can be used to explore and expand details.

The OFDM leverages the GM Application Programming Interface (API), which allows a developer to create their own overlays on the basic GM maps. A significant advantage of using GM to display the freight data is the ability to leverage other Google services, such as Google Traffic, Google Street View, and satellite images. The integration of existing freight data with the Google Maps application means that as Google provides more services, the OFDM can take advantage of these services, most often with limited time and monetary overhead. Finally, Google Earth®² can be used as a backbone to develop maps that can be exported to KML/KMZ files, a format that is gaining wide acceptance, which can later be displayed in GM. At a high level, the OFDM system processes and architecture are described in Figure 1.

A second key component of the OFDM is PORTAL, the official transportation data archive of the Portland metropolitan region (Bertini et al., 2005b). PORTAL consists of a 700GB PostgreSQL database archive and a website for visualizing that data. The OFDM uses PORTAL for data storage and retrieval. Freight-related data is stored in PORTAL and retrieved for display on the OFDM map interface. Storing data in a database helps support dynamic content by making it easy to select and display only data the user has requested. In addition, as PORTAL expands by adding new data and features, OFDM will automatically be able to leverage that expansion. A current Portland State University (PSU) project involves loading Weigh-in-Motion (WIM) data into PORTAL with the purpose of calculating truck travel times throughout the state

¹ A prototype of the Oregon Freight Data Mart can be found at http://portal.its.pdx.edu/testarea/archive/freight_data/fdm.php. This website is working properly as of November 2009 and it is best displayed using Mozilla Firefox® browser. Changes in GoogleMaps® or browser can affect the future display of the Oregon Freight Data Mart and the maintenance of the OFDM website is beyond the scope and funding of this project and report.

² Google Maps and Google Earth are trademarked products. For sake of brevity we omit the ® sign henceforward.

of Oregon. Once that project work is completed, the WIM data and associated travel times will be automatically available to the OFDM.

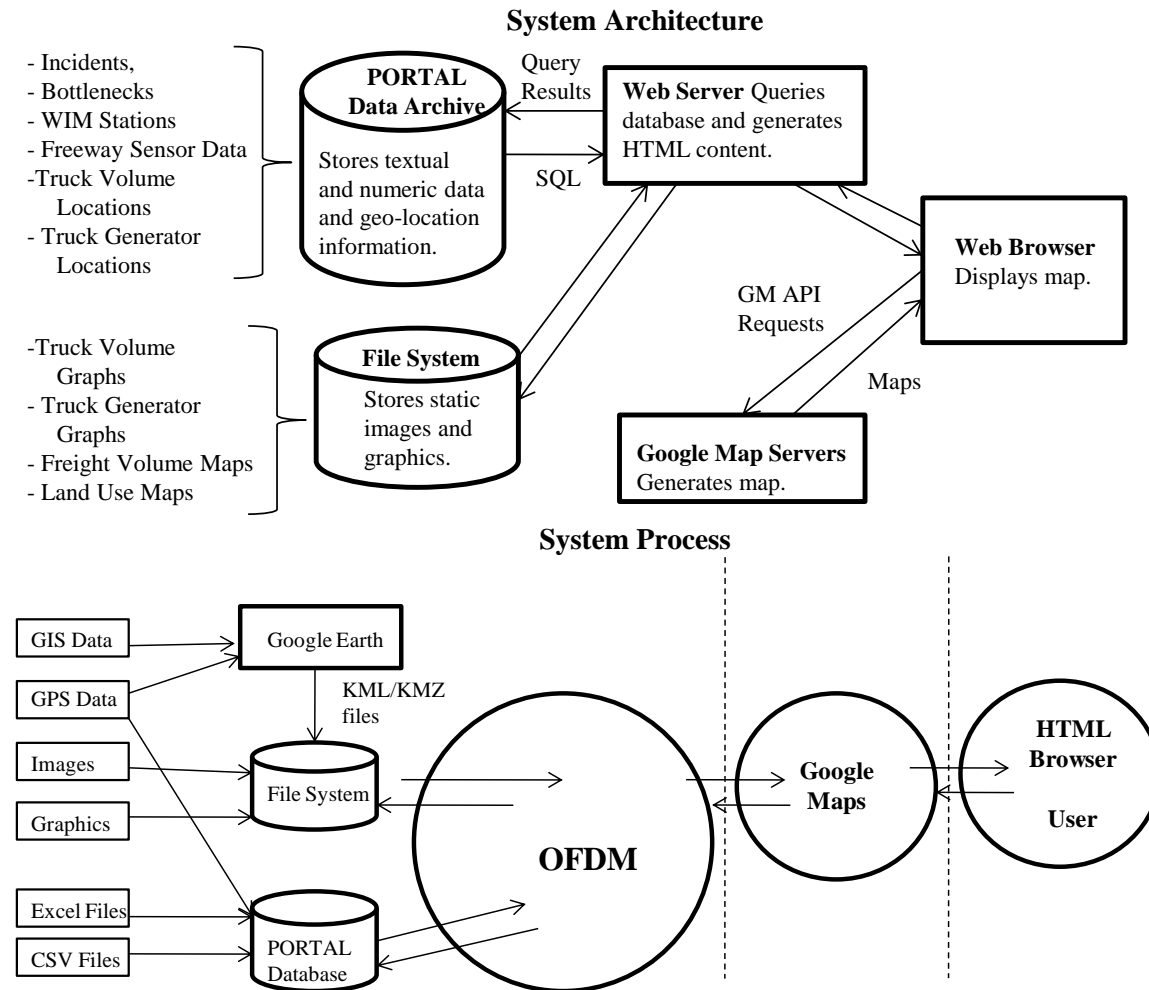


Figure 1. The OFDM System

2.1 CURRENT DATA SOURCES AND CHARACTERISTICS

The OFDM combines a set of diverse data from disparate data sources into a single map-based interface. This interface provides an easy-to-use means of accessing freight-related data while adding geographical context. The OFDM contains data from several sources, including the Port of Portland, the Oregon Department of Transportation (ODOT), Portland’s metropolitan planning organization (Metro), PORTAL transportation data archive, and research analysis and results of several transportation performance-related projects at PSU. This section describes the types of data currently contained in the OFDM as well as data sources and original formats. Table 1 summarizes data sources and their characteristics; the disparate data formats include:

GIS shape files, Adobe PDF files, Microsoft Word documents, Comma-Separated Value (CSV) files, Microsoft Excel files, and PORTAL data.

Table 1. OFDM Data Sources

Name	Data Provider	Type of Data	Source Instrument	Collection Metadata	Analysis Reports
Truck Incidents	PORTAL/ ODOT	Database	Input by ODOT ATMS operators	Database field descriptions	
Truck Volumes	Port of Portland	Survey Data, Excel File	Field Collection, consultants	Report description	
Truck Generators	Port of Portland	Survey Data, Excel File	Field Collection, consultants	Minimal metadata	
Bottlenecks	ODOT/ OTREC Project	Text Data	Loop detectors, ground truth GPS data	Detailed description and methodology	Continuous collection and analysis - Reports
Weigh-In-Motion Stations	ODOT	Database	Scales, transponder readers	Detailed description and methodology	Continuous collection
Highway Speed and Reliability	PORTAL/ ODOT	Database	Loop detectors, cameras	Detailed description and methodology	Continuous collection and analysis - Reports
Freight Volume Maps	Metro	Maps	Variety of truck counts	No metadata	
Land-Use Maps	Metro	Maps	Norms and regulations	No metadata	

2.1.1 Port of Portland

The Port of Portland is one of the major ports in the Pacific Northwest. The Port has an active role in the study of freight movements in the region. Freight data from a recently commissioned data collection study includes truck-following studies, truck counts around the Portland

metropolitan area, and truck-trip generation at major freight facilities (such as a terminal at the Port). This data was collected using counts and surveys, and the final deliverables were a series of reports and sets of data in spreadsheets and GIS files.

2.1.2 PORTAL Data Source

As mentioned above, PORTAL archives a wide variety of transportation-related data for the Portland region (Bertini et al., 2005b). PORTAL has been archiving speed, volume and occupancy data from sensors on Portland-area freeways since July 2004. PORTAL also stores weather, incident, freeway dynamic message signs (DMS), bus movement data from TriMet (the local transit agency), and data from 22 WIM stations across the state of Oregon. Most of this data is provided to PORTAL by the Oregon Department of Transportation. An initial selection of PORTAL data has been incorporated in the OFDM, including the freeway sensor data, which is used to plot highway speeds and reliability, and truck incident data. Data stored in PORTAL is easy to integrate into the OFDM. PORTAL's tabular-style database lends itself to the generation of HTML content and geographical position information compatible with the GM interface. PORTAL data sets, including the freeway sensor data, are regularly updated and the retrieval and storage of the freeway sensor data is fully automated. The retrieval and storage of incident and WIM data is semi-automated. When additional data of these types is received and stored in PORTAL, the new data is automatically integrated into the OFDM.

2.1.3 Other Data Sources

The Intelligent Transportation Systems (ITS) Lab at Portland State University leads many transportation-related research projects. Many of those projects produce data which is pertinent to freight transportation. Examples include bottleneck locations produced by recent projects on travel-time estimation (Tufté et al., 2008) and automated bottleneck identification (Bertini et al., 2005b) as well as truck travel times derived from WIM data. The results of these projects may be in reports or in the PORTAL database. Land-use maps are provided by Metro.

3.0 INTEGRATION AND IMPLEMENTATION CHALLENGES

Data integration is a process of assimilating data from different sources and formats. The OFDM integrates a wide variety of freight-related data into a single map interface. One of the main challenges of developing the OFDM prototype was to integrate these diverse data sources in an intuitive and useful way, and also to add geographic context and the ability to associate and connect data through the use of a map-based interface. In addition, metadata, or data about the data, is poor or non-existing in many data sources (see Table 1). The lack of metadata regarding data collection methods, data semantics, and basic data description greatly complicates the data integration process. This section describes several challenges encountered during the course of the OFDM's development.

3.1 GEO-LOCATION

Geo-location information is provided in a number of different ways. However, the GM API requires geographic coordinates (a latitude-longitude pair) to display a marker, and a list of geographic coordinates to display a polyline or polygon. A subset of the PORTAL incident data is geo-coded with geographic coordinates; typically the major incidents that cause significant traffic delays are also geo-coded. Displaying such geo-located incidents on the OFDM map is relatively straightforward - the incident metadata (time, description, level, etc.) is retrieved from the database along with the geo-location of the incident, and this data is used to create a GM marker for the incident. The rest of the incident data is typically geo-located by specifying the primary roadway on which the incident occurred and the nearest cross street.

Identifying geographic coordinates information requires identifying the coordinates of roadway intersections, which is typically a manual process requiring some human intervention. The PSU Travel Time study provides bottleneck location in terms of a text description, highway corridor, and approximate milepost. This data was geo-located with the help of GM itself, which can provide coordinates for a point clicked on a GM map. Since the number of bottlenecks was small, this manual method of geo-location was acceptable. The FHWA bottleneck study provides LRS identifiers, which require GIS software to convert to latitude-longitude information. Some of the truck volume and truck generator data was geo-located by hand based on text descriptions of collection locations. Geo-location of WIM stations was done using GM satellite images and approximate highway and milepost information from ODOT.

In the process of testing the OFDM interface, it was observed that geo-location information varies greatly in accuracy. From close observation of the incident data and comparing geo-location with text description, it is clear that the ODOT ATMS incident geo-location information is limited in its accuracy. In contrast, the accuracy of the Highway Speed and Reliability data is quite high, as that data was derived from GPS readings taken along the highway.

3.2 RAW DATA VS. DOCUMENTS AND IMAGES

Raw data formats such as CSV files or Excel files tend to be easier to integrate into the PORTAL database and, therefore, into the OFDM. In contrast, data which is provided as figures in

Microsoft Word or Adobe PDF is more difficult to integrate in a non-trivial fashion. As shown in Section 5.0, figures can be displayed in the OFDM; however, the data contained in these figures is difficult to integrate into the database and is available only through viewing the images. In contrast, if the data had been provided in a raw format, it could be loaded into PORTAL and queried and displayed dynamically. For example, with the PSU Travel Time bottleneck data, the data was loaded into the database, which gave the user the ability to dynamically select which bottlenecks they wanted displayed. Such dynamic selection is not possible with data that is provided as an image or document. Raw data lends itself to loading into the database and to dynamic and selective display. Graphs that are provided as images from a document can be stored and displayed, but integration is limited.

3.3 MAPS

Land-use and freight-volume data was provided in the form of maps. As discussed above, if the maps are provided as images, the integration is limited to displaying those images to the user. In the case of the land-use and freight-volume maps, despite the fact that geo-location data was clearly available at one time, the maps have not yet been integrated into the GM display due to the fact that they were converted into images. The same problem would occur for maps provided as output from modeling software with limited capabilities for producing Latitude/Longitude data. However, maps provided in formats such as shape files or KML/KMZ files (the format for Google Earth), can be displayed in a GM interface.

3.4 DATA OVERLAP

For many types of information, such as bottleneck locations and freeway speed and travel time, there are several potential data sources. In the case of bottleneck locations, the project had at least three possible sources of data: FHWA bottleneck data (White and Grenzeback, 2007), the PSU Travel Time project (Tuft et al., 2008), and the PSU Bottleneck Identification project (Bertini et al., 2008). All three of these sources provide information about bottlenecks on Oregon highways, but the scope and type of information varies.

The PSU Bottleneck Identification project is investigating automatic bottleneck identification for freeways in the Portland area using the PORTAL data archive. So far, this project has produced a list of possible bottlenecks on Interstate 5 in Portland (Bertini et al., 2008); the information provided by this study is bottleneck location in terms of highway, time of the day, and milepost. The PSU Travel Time project has identified bottlenecks across the freeways in the Portland region; this identification was based on data from the PORTAL data archive and the collection and examination of more than 500 ground-truth (probe vehicles) travel time runs. The information provided by the Travel Time study includes bottleneck location (highway id and milepost), activation time, approximate average length of time the bottleneck is activated, approximate average extent (in miles) of the bottleneck, and a description. Finally, the FHWA provides information on bottlenecks across the state of Oregon (including rural bottlenecks), in contrast to the two previously described sources, which focus only on the Portland metropolitan area. Also in contrast to the two PSU sources, the FHWA provides much greater detail about each bottleneck, including a number of estimated performance metrics, such as AADT, AADTT, Percent Trucks, Annual Truck Hours of Delay, and also classifies bottlenecks. Thus, the

distribution of the bottleneck locations and the metadata available about the bottlenecks varies greatly.

At this time, only the bottlenecks from the PSU Travel Time project have been incorporated into the OFDM. The research team is in the process of incorporating the additional bottleneck data and several questions have emerged. These include whether to integrate all three sources or just one source and, if multiple sources are used, whether the team should make separate layers from bottlenecks from separate sources. Making separate layers gives the user flexibility, but may be confusing to a user who does not know how best to select between different sources. If the research team puts multiple sources in one layer, how should it deal with the fact that different bottlenecks have different metadata? Finally, are there accuracy differences between different sources and, if so, how can those differences be communicated to the user?

3.5 SYSTEM MAINTENANCE AND INFORMATION OVERLOAD

Transportation data storage and visualization requires a significant and continuous time commitment and financial support. With any large system, time and resources are required simply to keep the system up and running - hardware and software must be maintained and upgraded; bugs and problems with the system will be discovered and must be fixed and addressed; users need to be trained and their questions must be answered; and changes to systems that interact with the transportation archive must be handled. For example, PORTAL receives data directly from the ODOT ATMS, so ATMS upgrades often necessitate PORTAL maintenance.

As new technologies provide an increasing ability to collect large amounts of data, information overload may cloud essential knowledge. With the proliferation of sensor technology, collecting vast amounts of data is inexpensive and relatively easy; the problem then becomes analyzing, filtering and mining that data. In fact, in many cases, people desire to use data collected for reasons beyond the intended use. For example, the ODOT freeway sensors were installed for the purpose of adaptive ramp metering. However, the data from those sensors is now used for travel time estimation, performance metrics and a wide variety of research projects. WIM data, which is collected for truck preclearance, can now be used to analyze truck volumes and truck travel times.

While it is efficient to use already-collected data in such situations, several issues arise. First, one may simply have much more data than one needs and will need to decide whether to use all of the data or just a subset. In addition, the data quality requirements of the application for which the data was collected may be weaker than the data quality requirements of the new application, so data will need to be cleaned and filtered. Storing and analyzing the vast quantities of freight data that will naturally be collected over the next decade will require careful consideration of system architectures and careful application of emerging technologies to ensure the data is put to its best use.

4.0 DATA VISUALIZATION CAPABILITIES

Integrating the data in one central map-based interface greatly enhances a user's ability to relate and correlate data and to understand the context and meaning of the data. The OFDM data is displayed as points and polylines on the map with associated metadata available via a mouse click or two, or as separate maps or graphs. In this way, all data that is reasonably associated with geographic information is displayed on the map. Figure 2 shows a screenshot of the main page of the OFDM. The primary components of this page are the Data Layers control, which appears on the left side of the screen, and the map that takes up the majority of the visual field. From this figure, one can see that there are many data layers available to the user in addition to two layers for Google services (Google Traffic and Google Street View). Each layer has a check box and a name. The check box can be used to turn the display of each layer on and off. Most layers also have a small icon between the checkbox and name, which indicates the marker that is used to represent that layer on the map. In addition, passing the mouse over a layer name displays a popup window with a brief description of the layer, and clicking on a layer name takes the viewer to the documentation page, which will provide details about that layer. Several of the layers (e.g., Bottlenecks, Truck Incidents, and Highway Speed and Reliability) have additional options that can be used to further select which data is displayed for those layers. A description of some of the data layers and their features is presented next.

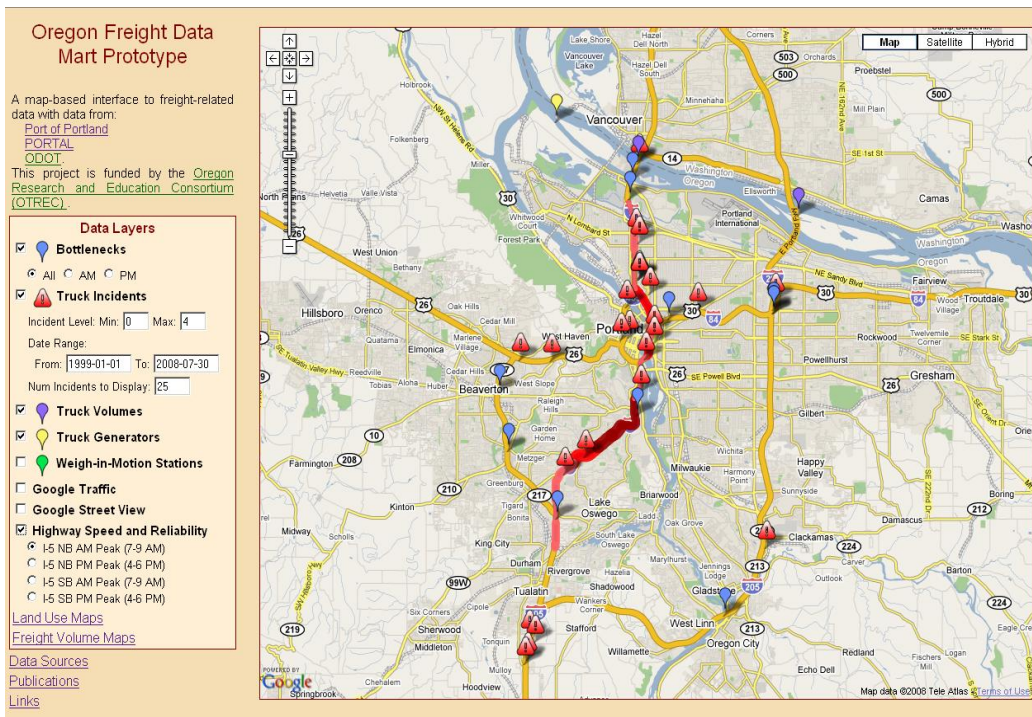


Figure 2. Oregon Freight Data Mart Main Screen

4.1 TRUCK INCIDENTS

The PORTAL data archive includes data from the Oregon Department of Transportation on incidents since July 1999. From the incident database, only incidents involving tractor trailers, railroads or hazardous materials were included in the OFDM (as shown in Figure 3). Each incident is marked on the map with a caution symbol. If the user clicks on the incident location, more detailed data about the incident is obtained. Additional information that is displayed includes incident time, type of incident, the number of trucks involved, railroad cars involved, and the presence of hazardous materials. The user can restrict the date range and level of incidents displayed and also can control the maximum number of incidents to display. If the date range and level produce more incidents than the specified maximum, only the most recent incidents are displayed. This functionality of allowing the user to control which incidents to display directly results from the storage of the incident data in PORTAL.

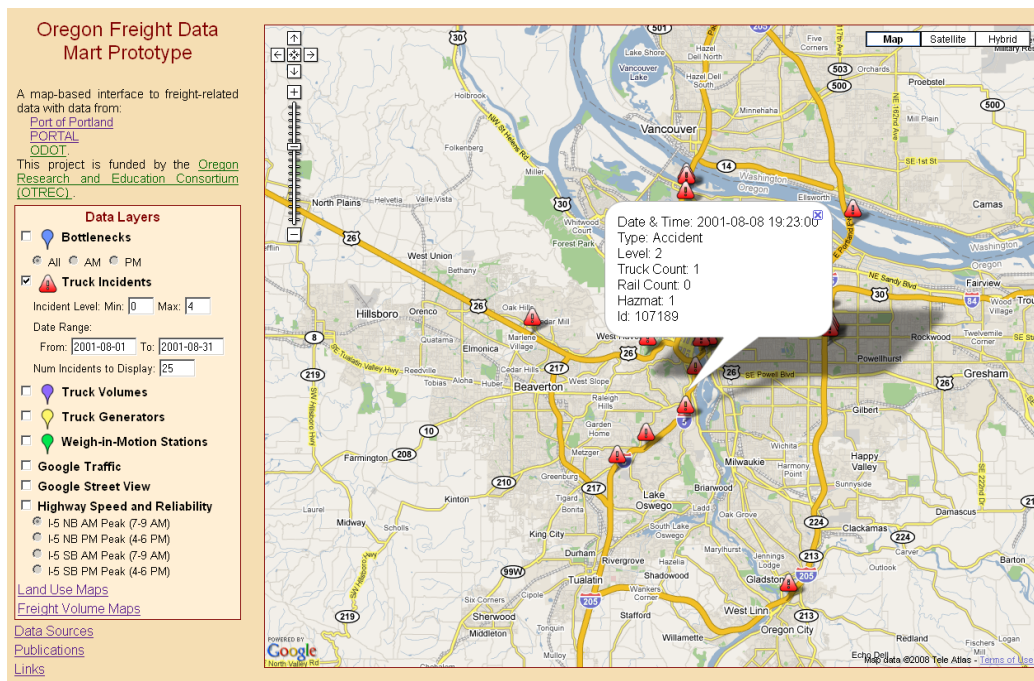


Figure 3. Truck Incident Display

4.2 TRUCK VOLUME

Truck volume data was collected in a recent freight study (Systematics, 2007). Truckers were surveyed and their responses tabulated to provide information about origin destinations and trips from key freight generators. Figure 4 shows the map-based display of the truck volume information. Truck volume is available for display in the OFDM only for selected sites and corridors; data for the I-5 corridor is shown in Figure 4. As with the Truck Incident layer, a user may click on each marker or corridor polyline to retrieve additional information. In this case, a popup appears with a brief description of the location or corridor and contains a link for "Additional Information." Clicking on the link retrieves a web page with a set of graphs (e.g., a

graph detailing truck volume by time of day). Figure 5 shows a portion of the figures shown for I-5 at the Interstate Bridge.

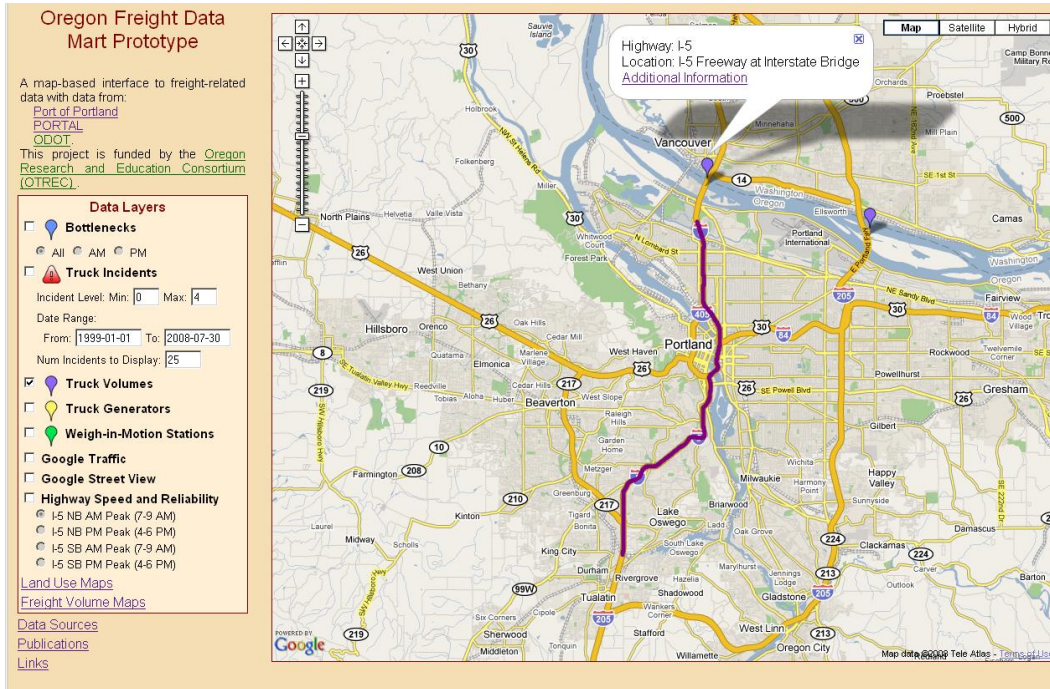


Figure 4. Truck Volume Display – Map View

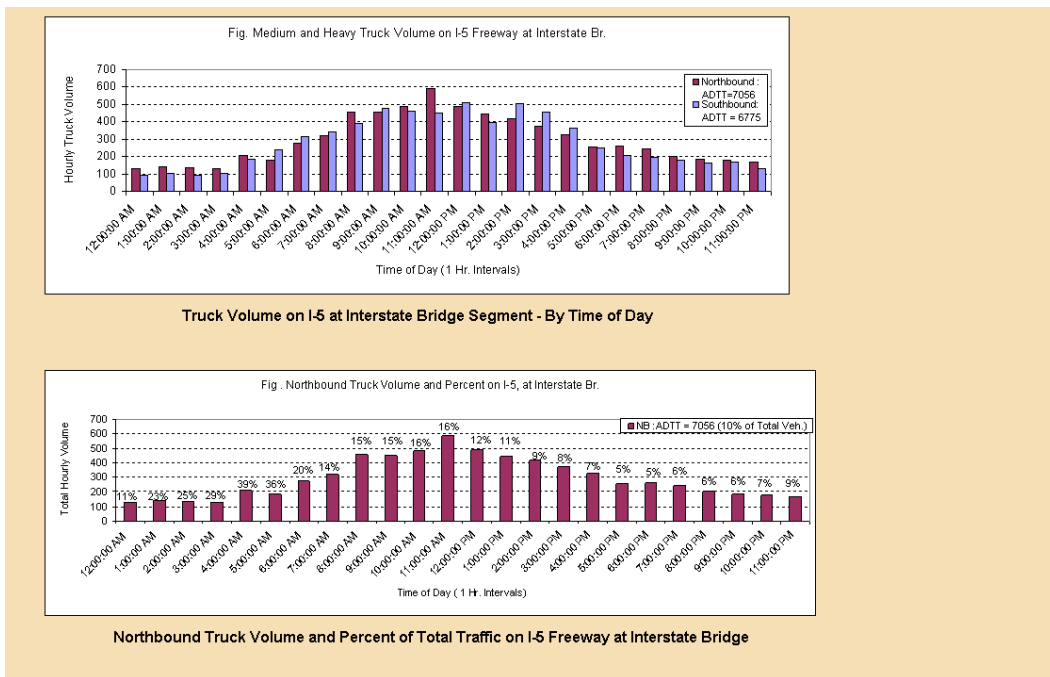


Figure 5. Truck Volume Display – Detail for I-5 at Interstate Bridge

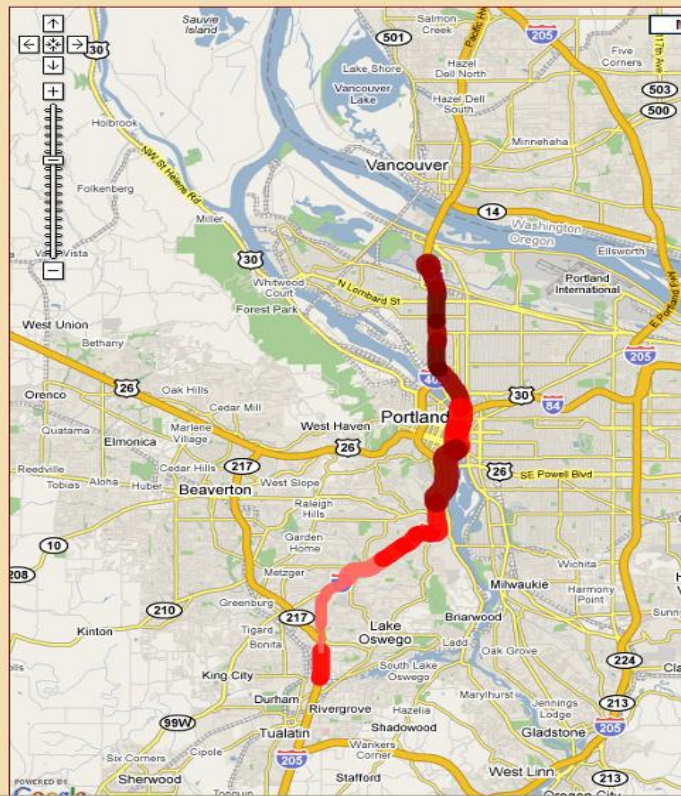
Freight Data Mart

A map-based interface to freight-related data with data from the [Port of Portland, PORTAL](#), and [ODOT](#). Contact [Miguel Figliozzi](#) for more information.

Data Layers

- Bottlenecks
 - All AM PM
- Truck Incidents
 - Incident Level: Min: Max:
 - Date Range: From: To:
 - Num Incidents to Display:
- Truck Volumes
- Truck Generators
- Weigh-in-Motion Stations
- Highway Speed and Reliability
 - I-5 NB AM Peak (7-9 AM)
 - I-5 NB PM Peak (4-6 PM)
 - I-5 SB AM Peak (7-9 AM)
 - I-5 SB PM Peak (4-6 PM)

[Land Use Maps](#)
[Freight Volume Maps](#)



Speed and reliability for freeways in the Portland metropolitan region. Line color indicates speed, line width indicates reliability.

	Speed Range (mph)
	0-25
	25-40
	40-50
	0-25

	Reliability (stddev of speed)
	0-5
	5-10
	10-15
	15-20
	> 20

Figure 6. Highway Speed and Reliability Display

4.3 HIGHWAY SPEED AND RELIABILITY

The OFDM uses freeway sensor data from PORTAL to provide corridor speed and reliability information. Figure 6 shows speed and reliability information for the I-5 NB corridor for the a.m. peak. In this figure, speed is indicated by the color of the line and reliability indicated by the line width (Bertini et al., 2005a). The key shown indicates how speed and reliability (standard deviation) are translated into colors and line widths. In the future, when one clicks on a link in this segment, one will be automatically directed to plots generated by PORTAL that provide detailed information about that location. Thus, data from the PORTAL archive is integrated into the OFDM in a visually interactive fashion.

4.4 GOOGLE SERVICES

A significant advantage of integrating the freight data into a GM interface is the ability to leverage other Google services. At this time, the OFDM incorporates Google Traffic and Google Street View (cite Google website). Figure 7 shows a geo-located incident and the use of Street View to view the incident location. The ability to view the location of an incident along with information about the incident is quite powerful. Further, the integration of existing freight data with the Google Maps application means that as Google provides more services, the OFDM can automatically take advantages of these services. For example, Google Traffic can be used to display real-time traffic information.



Figure 7. Google Street View of Incident Location

5.0 RECOMMENDATIONS FOR FREIGHT DATA COLLECTION

Powerful lessons for improving freight data collection and communication with minimal cost can be learned from the prototype implementation experience. Integrating diverse freight data into an online mapping system sheds light on the intrinsic weaknesses of current data collection methods. This report describes weaknesses in data collection discovered during the development of the OFDM and makes recommendations for improving the quality of freight data collection. Weaknesses include lack of statistical analysis, documentation, metadata, and geographical information. Recommendations include rethinking data collection methodologies, and using an Internet mapping mindset to take full advantage of technology and improve data quality and the visualization of performance measures.

Metadata is an important but often neglected part of data collection. Metadata, or “data about data,” often includes only basic information such as time and location of collection. However, it should be expanded to also include “collection method metadata.” For example, in the context of a photograph, the data is the photographic image and metadata typically includes the date and GPS coordinates of the photo. Collection and method metadata might include the resolution of the image and information about who or what took the photograph. In the context of a traffic count, the data is the number of vehicles counted and the metadata should include GPS coordinates. The “collection method metadata” would include a picture of the location and installation, model of device used, crew members involved and so on. In addition, semantic data models must also be developed to communicate how different pieces of information relate to each other. For example, links can be created between different data sources that provide similar information (e.g., traffic counts). Such modeling may provide a new dimension of accuracy if the semantic model providing the network of concepts and the relationships between those concepts is correctly applied (Shaw and Xin, 2003, Goodchild, 2000).

Traditional data collection and reporting methods have not been updated to be Internet-mapping friendly. The research team discovered a frequent lack of documentation of geographic detail and data collection procedures. In certain cases, geo-location information was limited to textual descriptions of collection locations, which is not sufficient for integration into a map-based display. Since the current cost of GPS logging devices is minor, any field data collection endeavor that does not provide GPS location data is unjustified. As seen in the previous section, databases or spreadsheets without temporal and geographic location data unnecessarily increase the cost and time of data integration. Similarly, text, or reports, should provide geographic data linking photographic or video recordings to temporal and spatial data. For example, current mapping technology supports transparent access to metadata; by clicking on the location of an accident, a user can immediately access the page of a safety report where photographs of and related information about that accident is contained. Vice versa, in an accident report, there should be a link from the accident photograph to a digital map of the accident location. Public sector agencies should update data collection efforts and procurement practices to standardize the acquisition and access of digital geographic and contextual data using GPS loggers, photographs, video recordings, traffic cameras footage and other such technologies.

As more data is collected and displayed, data quality issues, including justifiable statements of uncertainty and error, are becoming increasingly important. Data also should be supported by information regarding any sampling or statistical analysis that took place before or after the data collection itself. Users and researchers will benefit from this statistical metadata. In addition, such data can inform the design of future data collection efforts. For example, reports analyzing congestion and bottlenecks have been linked to the existing OFDM prototype and can be accessed via the “Bottleneck” layer. It is strongly recommended that future data collection efforts include metadata indicating the accuracy of measurements in all data sets. Currently, this metadata is not available in most cases, as illustrated by Table 1.

While integrating data into the OFDM, the research team also observed differences between data from one-time outsourced data collection efforts and continuously collected data. In any data collection effort, statistical analysis should be performed prior to data collection to estimate required sample sizes; this analysis should also be documented. With the outsourcing of data collection, such analysis is not always performed or documented. In addition, continuously collected data can be analyzed and checked for data quality with feedback provided to the collecting agencies to improve data collection and communication methods. This feedback loop makes for an improved data set in contrast to outsourced, one-time data collection. As technology evolves, a move toward continuous (or at least periodic) and automated collection systems can improve the quality of freight data.

Freight performance measures that take into account data mapping and communication should be developed. Given the premise that most transportation data has a strong spatial component, transportation performance measures also should be expected to have a strong spatial component. The synergy provided by Internet mapping allows the visualization and integration of freight-related performance measures and data. For example, the combination of GIS land-use data with GIS-GPS truck-trip data can provide invaluable insights regarding truck-trip demand generation (Fisher and Han, 2001) and the regional significance of freight corridors. Similarly, GPS freight data can be effectively combined with WIM data. Although most truck weight and payload information is generated for pavement management purposes, it also can be used to estimate the distribution of payloads (2000) and analyze the efficiency of urban freight systems (Figliozzi, 2007).

The research team argues that institutional barriers and a pre-Internet mapping mindset, not technology, are the most demanding hurdles to implementing a freight data web-based mapping application. Leveraging existing applications, the team has developed the OFDM prototype so that the software and hardware details are hidden behind standard network appliances and protocols. The OFDM users and information providers are freed from having to know about the details of the low-level technical infrastructure and equipment. Hence, as the OFDM is expanded with more data and features, the data integration and visualization challenges may be less influenced by technology than by inappropriate data procurement and collection.

6.0 TRANSPORTATION DATA LEVELS OF DETAIL

While the collection and integration of transportation data presents its own problems, this report's remaining sections focus on the issues and tradeoffs surrounding the visualization of transportation data. More specifically, the challenges involve designing an intuitive and informative web-application that contains a suitable level of detail and also reduces load-times to user-accepted levels.

Generalization in all forms of cartography is a necessary process (without which our maps would all require a scale of 1:1), which includes the simplification of curves and shapes using polylines. In computer graphics, polylines are used to represent any curve, line, or polygon. A polyline is defined as sequence of points and the line segments connecting the consecutive points. Any polygon is a special type of polyline (i.e., a closed polyline). This research examines various approaches for effectively displaying polygons on a Google Maps application. As any shape or curve is formed by a sequence of points connected by straight lines, for complicated shapes the fidelity or quality of the idealized map representation grows with the number of utilized points. However, as the number of points grows, the load-time or wait-time for the end user also grows.

The final sections of this report share the research team's experience with four algorithms to simplify polygons and reduce load-times. These algorithms were evaluated using two criteria: (a) total load-time and (b) quality or the ability to produce visually appealing and appropriate shapes that maintain a sufficient level of topological integrity. The research team reported on its experience with two pre-load-time simplification strategies; one involved proprietary software and the other a free web-based tool. The team also considered the circumstances in which pre-load-time simplification might be preferred over load-time simplification and vice versa. Finally, the team examined the surprising differences discovered with load-times for three well-known browsers in hopes of better understanding the load-times most of the user population will be dealing with, and perhaps providing a glimpse of what sort of load-time improvements might be expected from web browsers in the near future. The following sections begin with a brief description of the OFDM displaying a wide array of data types and geographic scales.

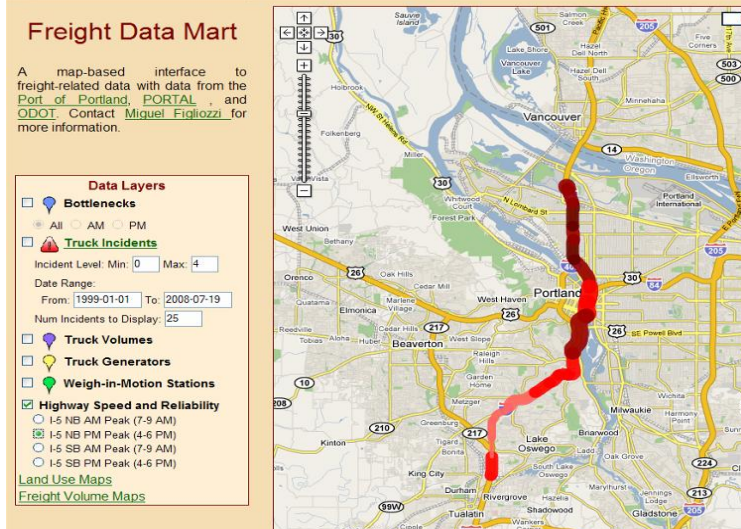
The OFDM integrates a wide variety of freight-related data into a single map interface. One of the main challenges in developing the OFDM prototype was the integration of these diverse data sources into an intuitive and useful format, as well as the addition of geographic context and the ability to associate and connect data through the use of a map-based interface. The OFDM data is displayed as points, polylines, and polygons on the map, with associated metadata available via a mouse click or two or as separate maps or graphs. In this way, all data that is reasonably associated with geographic information is displayed on the map. The primary components of this page are the Data Layers control, which appears on the left side of the screen, and the map which takes up the majority of the visual field.

There are many data layers available to the user. These layers greatly differ in their geographic scale used for the display. For example, Figure 8 displays the location of an incident or accident at a street level on top; the reliability of a highway corridor at a regional level in the middle; and

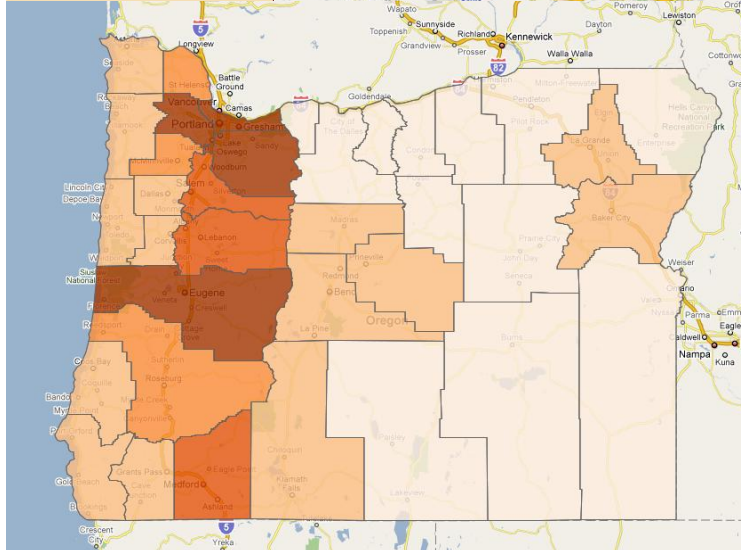
commodity production by county at a state level at the bottom. Jointly displaying these diverse sets of data or switching the views creates visualization challenges as detailed in the next section.



STREET LEVEL VIEW



REGIONAL LEVEL VIEW



STATE LEVEL VIEW

Figure 8. Levels of Geographic Detail

7.0 NUMBER OF POINTS, LOAD-TIME, AND QUALITY TRADEOFFS

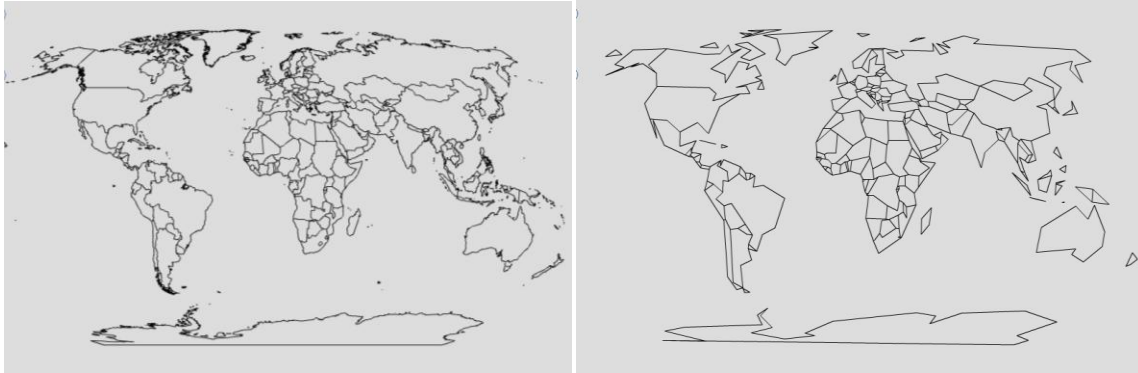


Figure 9. Country map of the world before and after simplification

The larger the number of points displayed at small scale, the longer the load-time or wait-time for the user. Furthermore, displaying too many points at a small scale not only slows down the display, but may clutter and even reduce the quality of the image, as discussed in the next section. On the other hand, there are also quality problems inherent to simplification; primarily the loss of desired shape. Figure 9 demonstrates visual issues inherent in simplification, and illustrates the problem of oversimplification via a before-and-after map containing the countries of the world. The left-hand map in Figure 9 is a simplified version of the right-hand map and was obtained with a tool called MapShaper (2009).

The subjective nature of generalizing a line while retaining its original intent requires a level of human interaction and judgment that defies automation. The tradeoff between point reduction and visualization is a balancing act between decreased load-times and detailed display. The process of simplification requires a level of compromise in order to achieve the appropriate balance between load-time and detail of display. While tolerable wait times have been debated, with many suggesting that user frustration increases after 8 to 10 seconds without feedback (Bouch et al., 2000, King and Nielsen, 2003), others have noted that with feedback, such as a progress bar, tolerable wait times can be stretched to more than 30 seconds (Nah, 2004). While intuition indicates that users of known sites that serve a unique and valuable purpose will be more tolerable of longer wait times, this potential for increased tolerance must be balanced with the tendencies for users to perceive reduced quality (Bouch et al., 2000) and reduced credibility in slower web pages (Fogg et al., 2001). With this in mind, and the current limitations of load-times for online mapping, users tend to lean in the direction of point reduction and speedier load-times while sacrificing display. The next section describes Google map displays.

7.1 DATA CONVERSION STRATEGIES

This section describes required data manipulations that are needed to preprocess GIS data. The discussion about data conversion and polygon simplification strategies will focus on the Oregon counties.

For over 30 years, Geographic Information Systems (GIS) have helped enable the practice of building database-driven digital maps. This movement has served to motivate the uploading of an enormous amount of digital cartography onto the Internet. ESRI products have largely led this innovation in GIS software; hence, probably the most common file type available for download is the ESRI shapefile (.shp). As it can be argued that ESRI has led the innovation of GIS software, it can be poetically argued that Google Maps has put webGIS on the map. Although a distinction should be made between Google Maps web-mapping capabilities and the analysis capabilities with true webGIS, Google Maps seems to have earned the classification of webGIS by its overwhelming presence. Combined, these two innovations have helped in the creation of an uncountable amount of spatial data mapping, and with the ability to freely and easily display this data on a web-based format.

Data in ESRI shapefiles can be displayed in Google Maps after some processing or by using an image overlay. An online search for free, downloadable digital boundary maps of Oregon counties quickly produced a 3MB shapefile on the Oregon.gov website (OGEO, 2009). In preparation for display with Google Maps, any spatial data must first be transformed into the Mercator projection based on the World Geodetic System (WGS) 1984 Geographic Coordinate System. In addition to transforming the projection, creating polygons in Google Maps requires data derived from individual points rather than polygon/geometry objects (which is often the storage type in polygon related shapefiles). There are many available avenues for extracting the points from the shapefile, which are described in the next section, Data Conversion Strategies.

Aside from a point-to-polygon strategy, there are other approaches commonly used for displaying polygons within Google Maps. One such approach is the production of an image overlay. In a nutshell, an image overlay is a static image that has been compressed for what is often a semi-transparent display on top of the standard Google Maps display. From looking at other websites, this strategy can be implemented with suitably diminished load-times. However, the layer is then statically defined, and no longer available for adjustments in display, quality, and so on. While such a strategy may be suitable for some situations, such an option was not desirable for the research team's needs.

As is often the case with digital data that is moved between applications, the format of the data must be converted from one that matches the first application to one that aligns with the second. As stated earlier, the research team's main data set began as a polygon shapefile for Oregon county boundaries. This format is not yet suitable for display on Google Maps because the projection needs to be transformed into the projection used by Google Maps. Also, the polygons encoded in the shapefile need to be extracted into lists of points before they can be used for generating polygons within Google Maps. While there are multiple ways in which point data can be properly formatted for display in Google Maps (XML, tabular, etc), in all cases except an image overlay, the point data will need to be extracted.

7.2 PROJECTION

Map projection is simply a means of representing data derived from the spherical surface of the earth onto the flat surface of a plane (such as a paper map or a computer screen). Changing map projections is one of the most common tasks of mapping software, and so transforming data into

the desired WGS 1984 projection can be accomplished with nearly any mapping tool available. This is easily managed by licensed software such as ESRI's ArcMap tool (ESRI, 2009), and just as easily managed by much simpler, free tools such as Quantum GIS (QUANTUM, 2009), uDIG (uDig, 2009), or MapWindow (MapWindow, 2009). Many databases now have spatial extensions available to them that also can be used to transform map data from one projection to another. The PostGIS (PostGIS, 2009) spatial extension to the PostgreSQL (PostgreSQL, 2009) database has such a function in addition to hundreds of other spatially oriented functions capable of transforming and analyzing spatial data. Other databases such as Oracle (ORACLE, 2009) and MySQL (MySQL, 2009) offer spatial extensions with similar capabilities.

7.3 VERTICES TO POINTS

Shapefiles represent spatial data via points, polylines, or polygons. When dealing with polygon data, the shapefile attributes are managed as whole polygon geometries rather than the individual points that make up the polygons. As generating polygons in Google Maps requires the points that make up the vertices for each polygon, a means of extracting the points from the polygon shapefile is required. Again, there are various software tools available for this purpose.

ESRI's ArcMap has a tool called "Feature Vertices to Points" that produces a table containing the points used to generate each of the polygons. The table includes additional attributes, allowing the various polygons to remain distinguishable from one another. This table can then be exported into a CSV or Excel format for further manipulation or loading directly into a database. PostGIS, the spatial extension to PostgreSQL, has functions that can be used to similarly extract point data from polygon geometries. And similar functions exist in the various spatial extensions that accompany various other databases.

If, however, a user is without a spatially enabled database or suitable software products, there are still other strategies for extracting individual points from the polygons. One such strategy involves converting the shapefile into a KML file. The resulting KML file will be readable via a text editor and will contain lists of points in place of each polygon. To convert a shapefile into a KML file, free tools such as shp2kml (Zonum, 2009) will do. Aside from the points, the resulting KML file will contain ancillary data that users may want to clean from the file before importing to a database or converting to an XML.

Extracting the points from the KML file may require a little technical knowhow, as the research team is not familiar with any tool that automates this process. The team accomplished this task by writing a short Perl script that left only the desired lat/long data and the name of the county represented by the points/polygon. This could just as easily have been managed by a software tool or a short program written in any language that allows for easy file manipulation and regular expressions, as would the use of various command line strategies. A similar script could have been used to create an XML file containing the resulting data, which could then be uploaded directly into a Google Maps application. However, the team's application is structured around large stores of data and ongoing research projects; the option with intermediate storage in a database was more suited to these needs.

After adjusting the projection and extracting the points from the polygons, the team was left with a tab delimited text file containing a list of points for each polygon. From here it was a simple

case of uploading this file into a PostgreSQL database. For the Oregon county dataset, the team ended up with approximately 300,000 points in all. This, the team learned, was an inordinately large amount of data for display via Google Maps. The other two data sets used had point extractions comprising of 10,000 points to 100,000 points, respectively.

7.4 SIMPLIFICATION STRATEGIES

The team must note that the process of simplification for both lines and polygons is, for most cases, identical. A polygon in this case is represented as a list of points, with a start point and an end point, in the same way that a line is represented as a list of points with a start point and an end point. The only difference is that, for the case of the polygons, the start point and the end point are the same. Each of the simplification strategies described below can be used for lines in the same way that they are used for polygons.

The team's initial (and naïve) attempt at displaying the polygons on its Google Maps application involved the use of all the points provided by the shapefile extraction. The load-time was on the order of minutes, and the team was prompted repeatedly by Google Maps to either continue the loading or cancel the process. Naturally, in a web application, any load-time over a few seconds is unacceptable. The team's task was twofold: Decrease the load time to an acceptable level, and produce a display with sufficient topographic integrity among the polygons (no visible gaps/slivers or overlaps between neighboring polygon boundaries) with an appropriate visual display (county boundaries remaining close enough to their original shape and accuracy).

Perhaps the best known line simplification strategy is the Douglas-Peucker line simplification algorithm published independently in 1972 by Urs Ramer (Ramer, 1972) and in 1973 by David Douglas and Thomas Peucker (Douglas and Peucker, 1973). This recursive algorithm has been shown to simplify lines with remarkable similarity to what a skilled human cartographer would produce, given similar data. For this reason, it has been a popular choice for digital map production. As this algorithm has known efficiency issues, the team decided to try a few algorithms of its own to compare with the Douglas-Peucker algorithm for appropriate visualization results and point reduction, as well as process time for the team's data set.

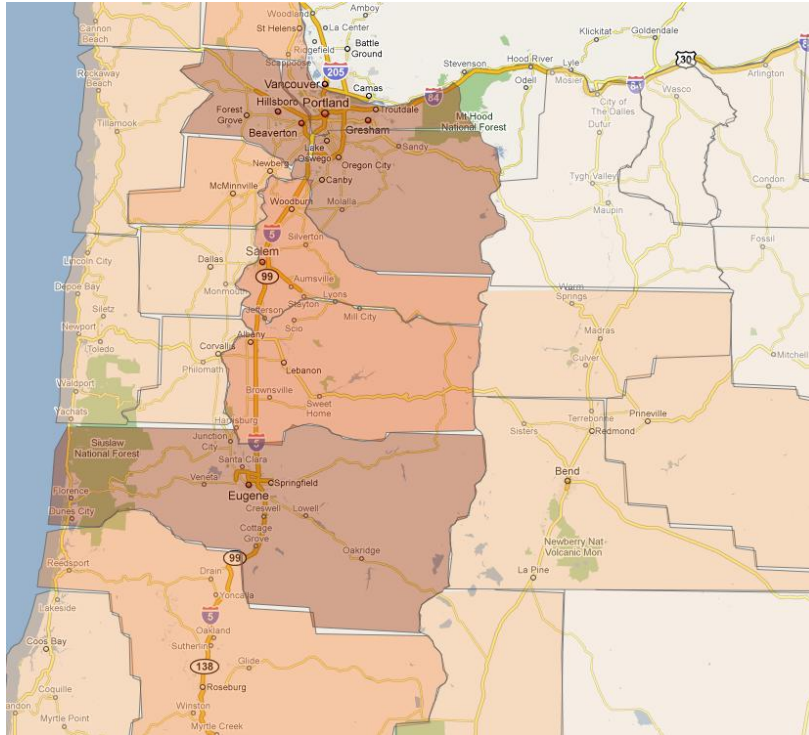


Figure 10. Topological integrity damaged due to oversimplification

There are, of course, problems inherent to simplification. Primarily the loss of desired shape as has been already discussed in the context of Figure 9. When simplifying the polygons individually, as is sometimes necessary (as opposed to en masse), other problems arise. These include gaps, or slivers, and overlaps between neighboring polygons that need to be addressed. Figure 10 demonstrates the appearance of slivers between Oregon counties and regions produced by an oversimplification of county polygons.

8.0 ALGORITHMIC SIMPLIFICATION METHODS

Originally, the research team considered simplifying its polygons in-house at load-time and experimented with the following algorithms. The team's data consisted of the Oregon county boundaries (OGEO, 2009) which had been correctly projected, converted to 300,000 points, and stored for parsing in a local database.

8.1 THE LAT/LONG DIFFERENCES ALGORITHM

The first linear algorithm the team tried was quite simple. Every time a new point was extracted from the database, the distance in latitude between this new point to the last point extracted was calculated, as was the distance in longitude between the two points. These distances were used to determine whether the new point was within a certain threshold in both latitude and longitude. If it was not at least a certain threshold different than the previous point (e.g., .001 degrees of difference in latitude and longitude), the point was discarded and the algorithm moved on to the next point. This process iterated through the original list until a smaller list of the points for each polygon was left to create the polygon objects in the Google Map application. As the visual integrity judgments (and threshold values) were quite arbitrary, repeated attempts had to be tested until a suitable working model was found. The resulting size of the sub-lists that still maintained an appropriate level of visual and topographical integrity was still around 200,000 points and was far from acceptable.

8.2 THE DISTANCE ALGORITHM

The second algorithm was one that examined the linear distance between consecutive points. Every time a point was extracted from the original list of points, its linear distance to the previous point was determined. This distance was then compared to some threshold (e.g., .005 degrees or more). If the distance was less than the threshold, the new point was discarded. If the distance was greater than the threshold, then the new point was kept. Again, the threshold values were quite arbitrary and various values were tested until one was found. In order to produce a visually appropriate display, 13,000 points were required. While better than the previous algorithm, this was still unacceptable.

8.3 THE TRIANGULATION ALGORITHM

The third algorithm involved a measure of triangulation. Each time a point was extracted from the database, the area of the triangle created with the previous two points, and the point just extracted, was determined. If the area of the triangle was of sufficient size (e.g., greater than .0000015 square degrees of lat/long), then that point was stored in the final list of points; otherwise, the point was discarded and the algorithm moved on to the next point. Again, various thresholds were tested in order to discover the appropriate area that produced the least number of

points while maintaining a visually appealing polygon layer. This time the results were more promising, with only 4,200 points used for the display.

8.4 THE DOUGLAS-PEUCKER ALGORITHM

After achieving no success with the first two algorithms and only limited success with the third, the research team implemented the well-known Douglas-Peucker line simplification algorithm. The Douglas-Peucker algorithm recursively divides each polygon into smaller and smaller line segments. It starts with the first and last points in the list as end points to a line segment. It then finds the point in the list that is farthest from that line segment. If that point is farther from the line than a given threshold, then that farthest point is used in recursive calls as the last point with the original first point, and the first point with the original last point. If that point is closer than the threshold, all points between the first and last can be discarded. The results of this algorithm (2,500 points), along with the three previously described, are summarized in Table 2 below.

	Lat/Long Differences	Geometric Distance	Triangulation	Douglas-Peucker
Approximate Process Time	10 seconds	10 seconds	10 seconds	30 seconds
Approximate Display Time	80 seconds	10 seconds	5 seconds	3 seconds
Total Points	205,310	12,953	4,239	2,502
Average Points per Polygon	4,442	345	100	70
Max Points per Polygon	25,716	676	268	154
Min Points per Polygon	124	94	49	21

Table 2. Comparison of the four algorithms for Oregon Counties 300,000 points

For each of the four columns in Table 2, **we** are measuring the point reduction that was accomplished by the algorithm while maintaining an appropriate visual display. For example, looking at the Lat/Long Differences column, **we** see that this algorithm was only capable of reducing the number of points to 200,000 before display was adversely affected, while the Triangulation algorithm in column three reduced the same 300,000 points to 4,200 point before negatively affecting the display. This test for display was somewhat specific to **our** own needs in that **we** arranged **our** application to retain the polygons on screen for one increase in zoom level from the original level chosen for that layer. Any display issues that might arise due to an increase in zoom beyond that ceased to matter since **we** removed the polygons from view at such advanced zoom levels, as they were no longer considered to be of value to the user (i.e., at such an increased zoom level, only one or two polygons would be visible, which reduces the visual value of the polygons). **We** wanted the polygons to appear without overlaps and without slivers under light to moderate scrutiny. **Our** judgment of topological integrity, and therefore **our** determination of appropriate threshold values for each algorithm, was determined by zooming in to the maximum viewable level for the given polygon layer and giving a somewhat cursory

glance around the image. If overlaps or slivers were noticed, the threshold was adjusted to include more points and the process was repeated until a suitable threshold was found that allowed for the least number of points while precluding these integrity issues.

One issue that arose with **our** integrity judging process was that often there remained one sliver or overlap, too obvious to ignore, that remained even as **we** adjusted the threshold again and again. For all algorithms, in some cases **we** were forced to adjust the threshold by a factor of up to 10 in attempting to remove a single noticeable sliver. Obviously, in such cases one has to decide whether removing that sliver would be worth the extra load-time, or whether an adjustment to the data or algorithm should be made that deals with the single issue.

In the end, each of the resulting images from the four algorithms satisfied **our** visual criteria (no obvious slivers or overlaps, while maintaining appropriate shapes) at the desired zoom levels. The algorithms reduced the original 300,000 points for the 36 Oregon counties to those values shown in Table 2. The first two algorithms are obviously inadequate for such purposes, while the last two, Triangulation and Douglas-Peucker, resulted in a small enough sub-list of points for acceptable layer selection load-times. While running **our** application on what **we** consider a typical machine setup (desktop computer with Microsoft Windows XP, Pentium 4 CPU 2.4 GHz processor and 512 MB of RAM), **we** found that the polygons were generally drawn on the screen at a rate of one second for every thousand points. This gives an approximate three-second wait for the Douglas-Peucker results, and a five-second wait for the Triangulation results. While the Triangulation algorithm, with its efficient processing time, might possibly be suitable for situations in which the data is being simplified at load-time, for all other cases the Douglas-Peucker seems the better choice.

8.5 SIMPLIFICATION SOFTWARE

Our experience suggests that data sets larger than 10,000-30,000 points require a pre-computation strategy. **We** now explore pre-existing software solutions to the problem of simplification.

An advantage **we** found when using these software simplification strategies is their tendency to maintain the common boundaries between the polygons, thus avoiding the introduction of slivers and overlaps altogether. Deciding at what point the simplification process has reduced the number points to a still visually appealing degree becomes more about the resulting shapes of the polygons (see Figure 8) rather than the topological integrity (see Figure 9) that was a concern when simplifying the polygons individually.

Proprietary products such as ESRI's ArcMap come with effective simplification tools. However, it is worth mentioning that **our** own experience with ArcMap was quite frustrating, with a seemingly inordinate amount of time spent waiting for the tool to process a single simplification only to find that **our** simplification threshold was inappropriate and required more attempts. (In the end, **we** grew so frustrated with the wait-times that **we** abandoned this attempt altogether, choosing to use the MapShaper tool described next instead). For those without access to the proprietary software tools (and with equal or less patience than **we** have), a free online tool for simplification can be found at MapShaper.org. This web-based application provides a similar

service to the ArcMap simplification tool in that it attempts to simplify the entire layer (shapefile) of polygons, serving to maintain topological integrity between individual polygons. The simplification is presented visually to the user so the desired result can be seen before exporting the result as another shapefile. After obtaining this new shapefile with a great degree of simplification already in place, **we** simply run through the point extraction process described earlier in the Data Conversion Strategies section to convert the shapefile into lists of points suitable for **our** database and Google Maps.

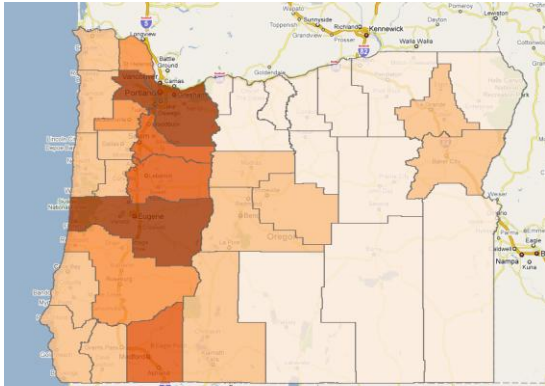
9.0 RESULTS AND DISCUSSION

Our final strategy for the Oregon counties utilized pre-simplification without any load-time modification. This strategy worked fine for Washington counties (Marshall and Marx) as well. With the contiguous United States (NA, 2009), **we** were only able to decrease the total points with pre-simplification to around 8,200 without creating a display that was, in **our** definition, distorted. For this layer, **we** combined pre-simplification with a dynamic fine-tuning performed at load-time with our own Douglas-Peucker algorithm. Interestingly, the final number of points using this hybrid strategy (2,514) was more than the number of points **we** ended up with when using the Douglas-Peucker in-house simplification (2,008). Even more interesting was noticing that it also left more points than **our** load-time triangulation algorithm (2,353). While the difference is upwards of 25% more points in the former case, **we** have no reservations regarding the use of this hybrid strategy as it decreases **our** server-side process time by three or four seconds, which seems worth the extra half-second increase in load-time. Table 3 below outlines a comparison for the triangulation and Douglas-Peucker algorithms, as well as the pre-simplification results. It should be noted that the dual approach to simplifying the states polygons resulted in 2,514 points after an additional load-time Douglas-Peucker simplification was performed on the 8,157 pre-simplified results. Figure 11 presents a visual comparison among simplification algorithms.

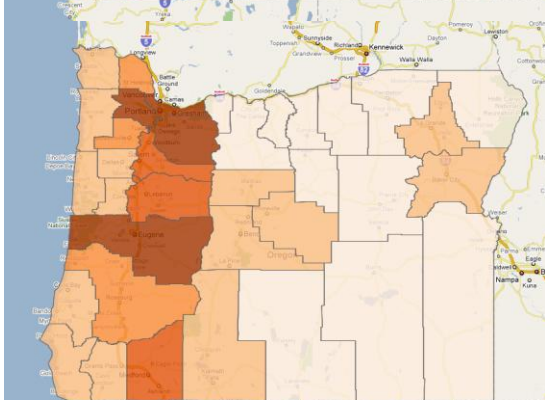
	Original # of Points	Triangulation	In-House Simplification w/ Douglas-Peucker	Pre-Simplification with MapShaper
Oregon	295,338	4,239	2,502	2,326
Washington	19,009	4,495	3,171	2,317
U.S. States	110,148	2,353	2,008	8,157

Table 3. Algorithm Result Comparison

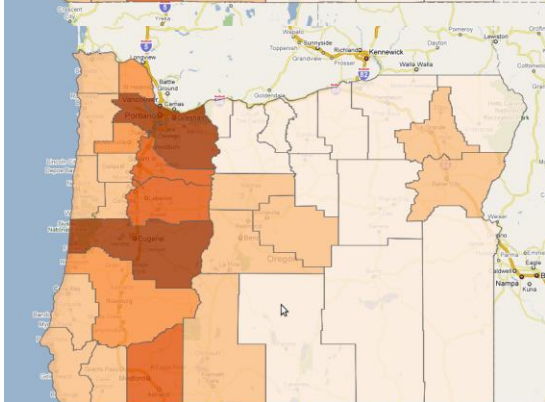
Our final application can be viewed here (OFDMweb, 2009) containing over a dozen layers, three of which involve the display of polygons used to denote the flow of freight between counties and state boundaries for Oregon, Washington, and the Continental U.S. The new load-times reflect a significant improvement from the previous load-time/in-house simplification attempts. The display times, unfortunately, are still not optimal for some browsers even though the number of points has been reduced to what **we** had thought should be the desired range of 2,000 to 3,000.



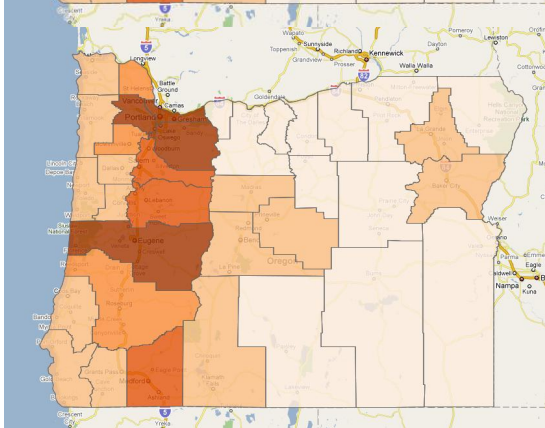
Original Points



Triangulation



Douglas-Peucker



MapShaper

Figure 11. Visual comparison among simplification algorithms

Some standard load-time patterns emerged that are worth summarizing here. First, it should be said that when not otherwise noted, **our** results are based on load-times in a Firefox browser on a desktop computer with Microsoft Windows XP, Pentium 4 CPU 2.4 GHz processor and 512 MB of RAM. Generally speaking, the server-side front-load time was around one second for every 30,000 points that are linearly processed (via a linear simplification algorithm or directly loading the points from the database into an array for display) and one second for every 10,000 points processed by the Douglas-Peucker load-time simplification algorithm. The difference between the linear simplification algorithms and directly loading the points from the database without simplification was negligible.

We were surprised at the level of variation between three browsers that **we** used for testing the application. Even on the same machine, Internet Explorer took nearly three times as long as Firefox to display the polygon layer while Chrome beat them both, requiring roughly half the time as Firefox to render the same display. The pronounced increase in display time from Internet Explorer continues to be a concern and suggests that other strategies should be explored for improved display times, including encoded polygons and image overlays (which **we** have been trying to avoid).

The time it took for the polygons to be displayed when the layer was selected by the user (client-side process) was somewhat linearly measured at around one second for every 1,000 points to display. This lag time is important regardless of whether the developer has deployed a pre-computation strategy or a more dynamic strategy. **Our** original goal was that each of the resulting polygon layers would contain no more than 2,000 or 3,000 points. As stated above, this decreased display times on Firefox and Chrome on what **we** consider a typical computer to an acceptable one to three seconds; however, **we** were disappointed with the slow display times experienced with Internet Explorer. As Explorer is so widely used, **we** realize that more work needs to be done to determine how **we** can further reduce expected display times. A subject of future research is utilizing or modifying other simplification algorithms (e.g., the algorithm proposed by Hershberger and Snoeyink (1992)) to obtain acceptable load-times across all browsers and platforms.

10.0 CONCLUSIONS

This paper presents the core of a digital application for freight data collection, integration, use, and communication. The OFDM system uses an innovative design that combines a searchable database and visualization capabilities provided by a publicly available, online mapping browser (Google Maps), with links to relevant contextual information including reports and documentation. The current implementation focuses on highway performance, safety, truck volumes, bottlenecks, and land-use data.

The goals that guided the OFDM application design are to: (a) leverage existing applications to reduce deployment time, (b) employ publicly available applications and interfaces to reduce development costs, (c) provide an intuitive, user-friendly interface with a minimal learning curve, (d) produce a prototype that can be easily updated, and (e) create a system that can readily incorporate future formats and technologies. This application is expected to provide guidance for freight data collection methods and the design of freight data semantics and protocols.

The largest long-term challenges seem to be rooted in outdated data collection methods and data delivery. Procurement of data must be forward-thinking and must incorporate up-to-date technology to record temporal, geographic, and contextual data. In addition, as more data is collected and displayed, data quality issues, including justifiable statements of uncertainty and error, will become increasingly important to avoid information overload and facilitate decision making. **Our** experience suggests that successfully implemented strategies can be as varied as the data **we** wish to display. Larger data sets require some degree of pre-computation to preserve tolerable front-load times. Smaller data sets can be simplified at load-time, but some measure of sensibility should be taken to ensure such dynamic processing is worth the extra load-time cost (in the case of non-linear simplification algorithms). For most cases, pre-simplification seems likely the easiest (and more appropriate) choice.

Regarding loading times and mapping quality, the algorithms examined seem to suggest above all else that worthy simplification algorithms require some level of sophistication. Even the triangulation algorithm, which ran at around three times the speed as Douglas-Peucker on **our** data, often resulted in nearly twice the number of points, leaving **us** to choose between front-load-time cost and layer-selection-load-time cost. The tools available for translating and converting from the common GIS format of shapefiles to the necessary projection and format for Google Maps provide many avenues. While the work can often be easily accomplished through proprietary software, **our** experience is that free, open source and web-based tools are equally effective for this process.

Producing visually appropriate polygons for online mapping boils down to the tradeoffs between topological correctness, shape appeal, and load-times. At times, accepting shapes that are limited in their visual appearance may be necessary in order to preserve appropriate load-times. As this balancing act requires human involvement and decision making, the tools used in these processes must continue to provide a level of flexibility and human interaction. While this implies more work for the user, such involvement will remain necessary for as long as **our** data will need to be simplified in order to produce proper load and display times.

11.0 REFERENCES

References

- ABDELMOTY, A. & JONES, C. (1997) Towards maintaining consistency of spatial databases. *Proceedings of the sixth international conference on Information and knowledge management*. Las Vegas, Nevada, United States, ACM.
- ALAM, M. & FEKPE, E. (1998) Application of Geographic Information Systems Technology in Freight Data Analysis: Case Study of I-90/I-94 Corridor Analysis. *Transportation Research Record*, 1625, 173-183.
- BERTINI, R., HANSEN, S., NOLAND, C. & BOSHA, P. (2005a) DERIVING METROPOLITAN PLANNING PERFORMANCE MEASURES FROM A REAL-TIME REGIONAL TRANSPORTATION DATA ARCHIVE. *Proceedings of the 9th International Conference on Computers in Urban Planning and Urban Management Conference (CUPUM)*.
- BERTINI, R., LI, H., WIECZOREK, J. & FERNANDEZ-MOCTEZUMA, R. (2008) Using Archived Data to Systematically Identify and Prioritize Freeway Bottlenecks. *Applications of Advanced Technologies in Transportation (AATT) 2008 Conference Proceedings*. Athens, Greece, May 2008.
- BERTINI, R. L., HANSEN, S., BYRD, A. & YIN, T. (2005b) PORTAL: Experience Implementing the ITS Archived Data User Service in Portland, Oregon. *Transportation Research Record* 1917, 90-99.
- BOUCH, A., KUCHINSKY, A. & BHATTI, N. (2000) Quality is in the eye of the beholder: meeting users' requirements for Internet quality of service. ACM New York, NY, USA.
- BUTLER, D. (2006) Virtual globes: The web-wide world. *Nature*, 439, 776-778.
- CASAVANT, K. L., ARNIS, A., GILLIS, W. R., NELL, W. & JESSUP, E. L. (1995) MODELING WASHINGTON STATE TRUCK FREIGHT FLOWS USING GIS-T: DATA COLLECTION AND DESIGN.
- CHIEN, S., LI, G. & DANIEL, J. (2002) Geographic Information System-Based Truck Accident Information and Management System for New Jersey Roadways. *Transportation Research Record*, 1818, 134-142.
- COBB, M. A., CHUNG, M. J., FOLEY III, H., PETRY, F. E., SHAW, K. B. & MILLER, H. V. (1998) A Rule-based Approach for the Conflation of Attributed Vector Data. *GeoInformatica*, 2, 7-35.
- DARTER, M. T., LASKY, T. A. & RAVANI, B. (2007) Transportation Asset Management and Visualization Using Semantic Models and Google Earth. *Transportation Research Record*, 2024, 27-34.
- DOUGLAS, D. H. & PEUCKER, T. K. (1973) Algorithms for the reduction of the number of points required to represent a digitized line or its caricature. *Cartographica: The International Journal for Geographic Information and Geovisualization*, 10, 112-122.
- DUEKER, K. J. & BUTLER, J. A. (1998) GIS-T Enterprise Data Model with Suggested Implementation Choices. *Journal of the Urban and Regional Information Systems Association*, 10, 12-36.
- DUEKER, K. J. & BUTLER, J. A. (2000) A geographic information system framework for transportation data sharing. *Transportation Research Part C*, 8, 13-36.

- ELANGO, V. V., BLAIKLOCK, P. M., GUENSLER, R. & AUTHORS, C. (2007) Visualization of Freight Movement with GT Freight Data Collector and Real-Time Cargo Tracking. *Transportation Research Board Annual Meeting*.
- ESRI (2009) ESRI GIS Software, <http://www.esri.com/>, accessed June 2009.
- FHWA (2006) Freight Performance Measurement: Travel Time in Freight-Significant Corridors. *FEDERAL HIGHWAY ADMINISTRATION, FHWA Report HOP-07-071*. Available at http://www.ops.fhwa.dot.gov/freight/freight_analysis/perform_meas/fpmtraveltime. Accessed 08/11/07.
- FIGLIOZZI, M. (2007) Analysis of the Efficiency of Urban Commercial Vehicle Tours: Data Collection, Methodology, and Policy Implications. *Forthcoming Transportation Research - part B*.
- FIGLIOZZI, M. A., HARRISON, R. & MCCRAY, J. P. (2000) Using weigh-in-motion data to calibrate trade-derived estimates of Mexican trade truck volumes in Texas. *Transportation Research Record 1719*, 129-135.
- FISHER, M. & HAN, M. (2001) *NCHRP SYNTHESIS 298, Truck Trip Generation Data*, WASHINGTON, D.C., TRANSPORTATION RESEARCH BOARD -NATIONAL ACADEMY PRESS.
- FLETCHER, D. R. (2000) Geographic information systems for transportation: A look forward. *Transportation in the New Millenium: State of the Art and Future Directions*.
- FOGG, B. J., MARSHALL, J., LARAKI, O., OSIPOVICH, A., VARMA, C., FANG, N., PAUL, J., RANGNEKAR, A., SHON, J. & SWANI, P. (2001) What makes Web sites credible? a report on a large quantitative study. ACM New York, NY, USA.
- GOODCHILD, M. F. (2000) GIS and Transportation: Status and Challenges. *GeoInformatica*, 4, 127-139.
- GREAVES, S. & FIGLIOZZI, M. (2008) Urban Commercial Vehicle Tour Data Collection Using Passive GPS Technology: Issues And Potential Applications. *Transportation Research Record 2049*, 158-166.
- HARKEY, D. L. (1999) Evaluation of Truck Crashes Using a GIS-Based Crash Referencing and Analysis System. *Transportation Research Record*, 1686, 13-21.
- HERSHBERGER, J. & SNOEYINK, J. (1992) Speeding up the Douglas-Peucker line simplification algorithm. *Proc. 5th Intl. Symp. on Spatial Data Handling*, 134-143.
- JACOBY, S., SMITH, J., TING, L. & WILLIAMSON, I. (2002) Developing a common spatial data infrastructure between State and Local Government--an Australian case study. *International Journal of Geographical Information Science*, 16, 305-322.
- KING, A. & NIELSEN, J. (2003) *Speed up your site: web site optimization*, Pearson Education.
- MAPSHAPER (2009) Mapshaper Development Blog, <http://mapshaper.org/>, accessed June 2009.
- MAPWINDOW (2009) MapWindow Software, <http://www.mapwindow.org/>, accessed June 2009.
- MARSHALL, R. & MARX, L. (2002) Bidder Collusion. Working Paper, Penn State University - Duke University.
- MCCORMACK, E. & HALLENBECK, M. (2006) ITS Devices Used to Collect Truck Data for Performance Benchmarks. *TRANSPORTATION RESEARCH RECORD*, 1957, 43-50.
- MYSQL (2009) MySQL Software, <http://www.mysql.com/>, accessed June 2009.
- NA (2009) National Atlas, <http://www.nationalatlas.gov/atlasftp.html#statesp>, accessed June 2009.

- NAH, F. F. H. (2004) A study on tolerable waiting time: how long are Web users willing to wait? *Behaviour and Information Technology*, 23, 153-163.
- OFDMWEB (2009) Oregon Freight Data Mart, http://portal.its.pdx.edu/~sfletche/portal/testarea/archive/freight_data/fdm.php, accessed June 2009.
- OGEO (2009) Oregon Geospatial Enterprise Office (GEO), <http://www.oregon.gov/DAS/EISPD/GEO/alphalist.shtml>, accessed June 2009.
- ORACLE (2009) ORACLE Software, <http://www.oracle.com/index.html>, accessed June 2009.
- POSTGRESQL (2009) PostgreSQL Software, <http://www.postgresql.org/>, accessed June 2009.
- POSTGIS (2009) PostGIS Software, <http://postgis.refractive.net/>, accessed June 2009.
- QUAMTUM (2009) Quantum GIS Software, <http://www.qgis.org/>, accessed June 2009.
- RAMACHANDRAN, B. & KLODZINSKI, J. (2007) Internet-Based Mapping Prototype for Integration with an Electronic Freight Theft Management System. *Transportation Research Record*, 1993, 101-108.
- RAMER, U. (1972) An Iterative Procedure for the Polygonal Approximation of Plane Curves.
- SHAW, S. L. & XIN, X. (2003) Integrated land use and transportation interaction: a temporal GIS exploratory data analysis approach. *Journal of Transport Geography*, 11, 103-115.
- SURESHAN, S. (2006) ONTARIO COMMERCIAL VEHICLE SURVEY: USE OF GIS FOR DATA COLLECTION, PROCESSING, ANALYSIS, AND DISSEMINATION. *Ontario Ministry of Transportation*, accessed November 10, 2007, <http://www.trb.org/Conferences/2006/FDM/Sureshan.pdf>.
- SYSTEMATICS, C. (2007) Portland Freight Data Collection Project, Phase II.
- TRB. (2003) Special Report 276: A Concept for a National Freight Data Program. *Committee on Freight Transportation Data, National Research Council, Washington, D.C.*
- TRÉPANIÉ, M. & CHAPLEAU, R. (2001) Linking Transit Operational Data to Road Network with a Transportation Object-Oriented GIS. *URISA Journal*, 13, 23-30.
- TUFTE, K., KOTHURI, S., FAYED, E. & BERTINI, R. (2008) Toward Understanding and Reducing Errors in Real-Time Estimation of Travel Times. Forthcoming *Transportation Research Record: Journal of the Transportation Research Board*, Transportation Research Board of the National Academies, Washington, D.C., 2008.
- UDIG (2009) uDig Software, <http://udig.refractive.net/>, accessed June 2009.
- WHITE, K. & GRENZEBACK, L. (2007) Understanding Freight Bottlenecks. *Public Roads*, March/April, Vol. 70, No. 5.
- ZONUM (2009) Zonum Solutions Software, <http://www.zonums.com/shp2kml.html>, accessed June 2009.

APPENDIX A

QUICK INSTRUCTIONS TO ADD A LAYER TO THE OFDM GOOGLE MAPS APPLICATION

1. The line numbers given are intended to provide some level of reference; however, remember that these actual line number values may be way off.
2. Add table to portal postgresql database: <http://portal.its.pdx.edu/phpPgAdmin/>
The table should contain the data that you'll want to include in the new layer. Be sure and adjust the privileges of the table so that the following groups will have Select access: portal_ro, itsportal, csdbgroup, and Grant All to itscripts.
3. Code modifications/additions will likely all take place in the following three files: fdm.js, fdm.php, fdm_fcns.php.
4. Add function to fdm_fcns.php similar to other create_*_JsString functions. This should include a query to the database, traversal through the query results, and construction of a string (jsString) that will be used to create an array for the other two files.
5. Add two variables to fdm.php
First takes the string constructed in fdm_fcns.php above (similar to \$*_JS variables declared around lines 50-65). Second involves adding two lines to the echo statement (similar to *_Array variables around lines 70-100).
6. Add html code to fdm.php
Add block of html similar to <tr> blocks (lines 200-600) to add the layer checkbox and label (notice the fdm.js functions called through onClick) (such as toggleSet and adjustView, you will need to adjust those eventually, too).
7. Add code to fdm.js
Declare Array variable (lines 7-35) Call add_*_Markers function in initialize() (lines 65-95)
Add a call to delArray in unload() (lines 100-123)
Define add_*_Markers function similar to others defined (lines 400-800)
Add 'if(id==' statement to get_marker_arr() (lines 950-990)
Add 'if(id==' statement to adjustView() (lines 835-865)
adjustView is called from toggleSet (lines 865-880) so make sure this too is appropriately defined for your needs.
8. If dealing with a layer containing radio buttons (sublayers) then you may need to make additional changes to fdm.js such as creating a reload_*_ function (such as those around

lines 1076-1300), and a `disable_*_Radios` function (such as those around lines 884-954), it is recommended to start with a simple layer that has no such complications.

APPENDIX B

QUICK INSTRUCTIONS TO CONVERT A SHAPEFILE TO A DATABASE TABLE SUITABLE FOR GOOGLE MAPS

NOTE: Much of this plus the simplification can be made easier with strategies mentioned in the final paper. Such as, polygon simplification with mapshaper.org, converting shapefile polygons to points with ArcMap toolkit (rather than using kml conversion and point extraction as talked about below).

Background

Google Maps requires a list of points (WGS 1984 -- lat/long) in order to create a polygon. Shapefiles (a common format for ESRI products which has steadily increased in popularity among the geography/cartographer, scientific world over the last 20 years) are highly available and are often easily found with a Google search. The problem comes when translating a shapefile into a format that can be used by the Google Map API.

Acquiring Data in the Correct Projection

Downloaded a shapefile containing the 48 contiguous states in the U.S. (<http://www.nationalatlas.gov/atlasftp.html#statesp>). Use a free tool called MapWindow (<http://www.mapwindow.com/>) to change the projection of those shapefiles into WGS 1984 (the projection used by Google Maps). NOTE: Many GIS tools could have been used for this (including ArcMap) or MapWindow (chosen only because it seemed simple enough to use for this purpose).

Extracting Points from the Shapefile

Use an application called shp2kml (<http://www.zonums.com/shp2kml.html> -- another free tool) to convert the newly projected shapefile into kml files. While kml files are in a format often utilized by Google Maps, the files in this format were only used to extract the needed data from. My primary purpose for converting to this format was because this process converts the shapefile polygon objects into lists of points. These lists of points were needed to populate the database table that my Google Maps application would access. These lists of points tend to be a bit large; however, including all of these points in the database will allow me to dynamically control which and how many of the points in each polygon would actually be used in the display.

Various unix command line regular expression type statements were used to extract only the lat/long data from the kml file, discarding the rest of the data. Eventually, this produced a CSV file that was easily uploaded into the PostgreSQL database that we are using to store data related to the Oregon Freight Data Mart.

NOTE: The state_polys table in the database has an integer column titled state_poly. This column was added so that our application, which creates GPolygon objects one by one, can discern between the sometimes multiple polygons that make up a single state (think of the islands in the Florida Keys).

APPENDIX C

QUICK INSTRUCTIONS TO ADD A POLYGON LAYER

Much of this work is already covered in the Shapefile to DB, and the DB to Polygon method sections; what was covered in these two appendices will not be repeated.

The Google Maps API has a GPolygon class which was used to add polygons to the map for both the U.S. states Commodity Flow layer and the Oregon Counties layer. Once the point data for each polygon was loaded into the postgresql database, it is necessary to modify three files: `fdm.js`, `fdm.php`, and `fdm_fcns.php`.

One purpose for the polygons was to help represent flow. In our case, we used flow of goods by truck whose data was obtained from the [factfinder.census.gov](http://factfinder.census.gov/servlet/EconSectorServlet?caller=dataset&sv_name=2002+Commodity+Flow+Survey&_SectorId=*&ds_name=EC0200A1) website (http://factfinder.census.gov/servlet/EconSectorServlet?caller=dataset&sv_name=2002+Commodity+Flow+Survey&_SectorId=*&ds_name=EC0200A1). On this webpage, the 2002 Commodity Flow Survey, and the “Shipment Char by Destination State by Mode by Orig State” data set was used, filtered the data set by Geography (Oregon) and again by Mode (Other Dimension, Truck) so that it was reduced to only those rows related to Commodities shipped by Truck from the state of Oregon. This produced a table with 52 rows (50 states, DC, and the US).

The resulting data as a CSV was downloaded and used unix sed commands to change the quoted string values to more numeric representations. Another table was created in the `fdm` database `flow_by_truck` and imported the CSV into the database.

The code in `fdm.js`, `fdm.php`, and `fcns_fdm.php` was adjusted to account for this new data, and to create two radio buttons under the U.S. State layer (which was eventually titled Commodity Flow by Truck). One radio button is for Value in millions of dollars and the other is for Tons in thousands. It was later decided that we should include a layer for an individual commodity. Wood Products was a commodity that was shipped by truck to the most states of the union. The data was exported as CSV and imported it into the newly created database table `wood_flow_by_truck`.

The code in `fdm.js`, `fdm.php`, and `fcns_fdm.php` was adjusted so that two more radio buttons were added under the Commodity Flow by Truck layer, one for Value of wood products and the other for Tons. NOTE: It makes no sense visually to have these two selections in their own layer, as this would just produce conflicting views of the map if both layers were selected. Radio buttons for each of the four views for the U.S. state polygons seems to make the most sense. A link was added from the Commodity Flow by Truck layer title that opens a window providing a little more detail concerning the data layer, the values represented by the colors used in the polygons, along with references to the data sources.

The color scheme used with the polygons is meant to represent the flow of goods from the state of Oregon. The darker colors represent the most flow and the lighter colors represent less flow. The legend is included in the link mentioned in the previous paragraph. The color scheme itself

was adopted based on parameters entered into the ColorBrewer.org website (<http://www.personal.psu.edu/cab38/ColorBrewer/ColorBrewer.html>) – sequential color scheme with five classes, appropriate for laptop and monitor display.

Additional ways of representing flow can be found in <http://googlemapsmania.blogspot.com/>.

APPENDIX D

QUICK INSTRUCTIONS TO CONVERT A DATABASE TABLE TO A SHAPEFILE TO

Background

The number of points in the U.S. state polygon table was far too large to be displayed as GPolygons in our Google Map application. Somehow we needed to reduce the number of points per polygon while maintaining an appropriate level of topological integrity in the shape of each polygon. All three algorithms were originally tested on polygons representing counties in the state of Oregon.

Algorithms

The first algorithm tried was quite simple. Every time a point from the database was extracted, it was compared with the last point extracted and determined whether this new point was a certain threshold different in either (both) latitude or (and) longitude. If it was not at least a certain threshold different than the previous point (e.g., .001 degrees of difference in latitude or longitude), the point was ignored. This process was repeated until only a small subset of the points for each polygon was used to create the GPolygon objects in the Google Map application. As the threshold values were quite arbitrary, we experimented with various values and made simple adjustments to the process until I found a suitable working model. The results of this algorithm are shown and contrasted in the table below.

The second algorithm tried was one that examined the distance between points. Every time a point from the database was extracted, we determined its distance to the previous point and determined whether or not this new point was a sufficient distance from the previous point (e.g., .005 degrees or more). Again, we experimented with various distance threshold values until I found one that seemed visually appropriate, while using the least number of points.

The third algorithm tried involved a triangulation algorithm. Each time a point was extracted from the database, we determined the area of the triangle that was created with the previous point used, the current point being examined and the next point in the table. If the area of the triangle was of sufficient size (e.g., .0000015 square degrees of lat/long) than we would keep this current point; otherwise, we would ignore this point and move on to the next point. Again, we had to experiment with various thresholds to discover the appropriate area threshold that used the least number of points while maintaining a visually appealing polygon layer.

Some results of the three strategies above can be seen below using nine Oregon counties (seven coastal counties, along with two in the eastern part of the state that are, in some cases, the least and most complex polygons) as a reference for calculating the average:

	Simple Algorithm	Distance Algorithm	Triangulation Algorithm
Average Points per Polygon:	472	389	195

Because the number of points used was still quite high, even with the Triangulation Algorithm (195 points per polygon is a little slower than we'd like), we lowered the threshold (and my standards of geometrical integrity) even more until eventually the average number of points used per county ended up being closer to an average of 110 points per polygon. For the State Polygons, the algorithm proved even more effective by reducing the average number of points to somewhere around 60 points per polygon.

APPENDIX E

QUICK INSTRUCTIONS TO ADD THE FHWA BOTTLENECK LAYER ORIGINAL DATA AND MARKERS

We originally received fhwa_bottleneck data (2004) in Excel table format. Using only the Bottlenecks-GRADES, SIGNALS, and CAPACITY tables, we created a new table in Excel, restricting the data to only the columns which seemed appropriate for the database (15 columns from the original 96) including the bottleneck_type_code column to distinguish between the three bottleneck types (411 for GRADES, 321 for SIGNALS, and 111,121,122 for CAPACITY). We created a table in the portals.fdm database called fhwa_bottlenecks, saved the newly created Excel table as a CSV file, and imported the CSV file into the fhwa_bottlenecks table in the database (37 rows).

Grant options for the following user/groups were granted for SELECT: portal_ro, itsportal, csdbgroup, and itsscripts so that the application and other users would have read access to the data. Google Maps requires lat/long data for its points and shapes. The only location data in the bottleneck data was the LRS_ID, along with beg_lrs and end_lrs columns, which we experimentally determined to be mile marker values. To obtain lat/long values from the given data we downloaded an Oregon milepost shapefile from ODOT: (<http://www.oregon.gov/DAS/EISPD/GEO/alphalist.shtml>).

Using ArcMap, we were able to select by lrs value and then by nearest milepost value (beg_lrs, end_lrs were in float format). This gave us a lat/long value that we then manually plugged into the fhwa_bottleneck table. After the table was loaded into the db, code was added to three files (fdm_fcns.php, fdm.php, fdm.js) to add the new bottleneck layer to the application. Nested checkboxes were chosen as the preferred display tactic, as this will allow the user to select however many of the three categories they wish (capacity, grade, signal) with the additional capability of toggling all chosen layers on and off with the outer checkbox.

For marker choice, we wanted a marker that was similar to the original bottleneck layer markers but different enough to be distinguishable. We chose the same blue inverted tear drop shape as is used with the original bottleneck layer but with a dot:

(http://maps.google.com/intl/en_us/mapfiles/ms/icons/blue-dot.png)
to distinguish them from the original bottleneck markers:
(http://maps.google.com/intl/en_us/mapfiles/ms/icons/blue.png).

When the markers are clicked, an infowindow is presented to the user offering information in the following categories: Route Number, Location, Number of Lanes, Annual Truck Hours of Delay HPMS, Annual Truck Hours of Delay Expanded HPMS, Beginning Mile Marker, and Ending Mile Marker.

Polylines

Next, we wanted a way to visually display the length of the bottleneck (distance between beg_lrs and end_lrs). We chose to represent the backup as a polyline that would appear when the bottleneck marker was clicked and disappear when the polyline itself was clicked, or when the layer was deselected. This functionality permits the user to begin with a simple/uncluttered display, add as many bottleneck lines as they wish to display with the ability to remove them one at a time, or all at a time when the outer checkbox is deselected (leaving the polylines invisible when reselecting the FHWA layer's checkbox).

Adding the polylines required additional lat/long information from the ODOT mile marker shapefile referred to earlier, in addition to some database modifications. We added a segmentid column to the fhwa_bottleneck. The segmentid values map back to the polylines table (all the new segmentids were given values greater than 10,000 to remove any ambiguity that might exist with earlier segmentids). We added the same segmentid values along with the mile marker (seq column) and the corresponding lat/long value (point column) to the polylines table. We created a table for the mile markers, selected the appropriate data from that table and loaded it into the polylines table (insert from select). All mile markers on all highways in the state of Oregon have an associated lat/long point value. The points can be accessed for the polylines via the following queries:

```
SELECT segmentid, route_no, beg_lrs, end_lrs, annual_truck_hours_of_delay_expanded_hpms
FROM fdm.fhwa_bottlenecks
WHERE segmentid IS NOT NULL
```

and

```
SELECT point(Marshall and Marx), point[1]
FROM fdm.polylines
WHERE (segmentid = $segmentid) AND
      ( ( seq >= floor($beg_mp) AND seq <= ceil($end_mp) ) OR
        ( seq <= ceil($beg_mp) AND seq >= floor($end_mp) ) )
ORDER BY seq
```

(where \$segmentid, \$beg_mp, \$end_mp are variables associated with segmentid, beg_lrs, and end_lrs respectively from previous query)

Polylines were then added with a point every mile. Please note that this is NOT optimal for higher zoom levels as highways can change direction multiple times between each mile marker. And again, I modified code in the three files: fdm_fcns.php, fdm.php, fdm.js.

The choice was made to vary both the intensity of color and the width of the polyline together to represent the variations in Annual Truck Hours of Delay (on a logarithmic scale). Finally, an info link was added so when the user clicks on the FHWA Bottleneck layer title a window is provided that offers legend-type information along with references, etc.



P.O. Box 751
Portland, OR 97207

OTREC is dedicated to stimulating and conducting collaborative multi-disciplinary research on multi-modal surface transportation issues, educating a diverse array of current practitioners and future leaders in the transportation field, and encouraging implementation of relevant research results.