

Portland State University

**PDXScholar**

---

PSU High School Innovation Challenge

2015 Innovation Challenge

---

Apr 11th, 12:30 PM - 2:30 PM

## Container Houses

Tran Joseph  
*Madison High School*

Anissa Rosbaugh  
*Madison High School*

Sydne Scott  
*Madison High School*

Hanan Yassin  
*Madison High School*

Follow this and additional works at: [https://pdxscholar.library.pdx.edu/innovation\\_challenge](https://pdxscholar.library.pdx.edu/innovation_challenge)



Part of the [Civil Engineering Commons](#), [Engineering Education Commons](#), [Environmental Engineering Commons](#), and the [Urban Studies Commons](#)

**Let us know how access to this document benefits you.**

---

Joseph, Tran; Rosbaugh, Anissa; Scott, Sydne; and Yassin, Hanan, "Container Houses" (2015). *PSU High School Innovation Challenge*. 6.

[https://pdxscholar.library.pdx.edu/innovation\\_challenge/2015/Posters/6](https://pdxscholar.library.pdx.edu/innovation_challenge/2015/Posters/6)

This Event is brought to you for free and open access. It has been accepted for inclusion in PSU High School Innovation Challenge by an authorized administrator of PDXScholar. Please contact us if we can make this document more accessible: [pdxscholar@pdx.edu](mailto:pdxscholar@pdx.edu).

# Container Houses

## The Problem:

We have noticed that there is an increasing number of homeless in our community. People who are homeless have a more difficult time getting jobs, making it harder for them to get back on their feet.

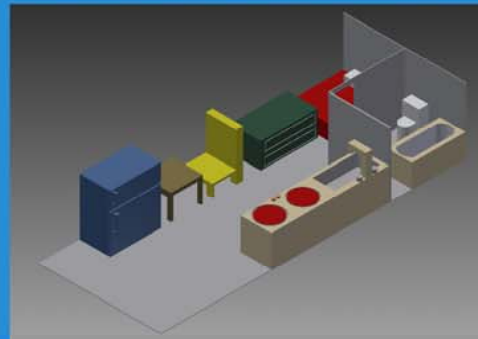
Homelessness is defined as a person without a stable place to live, in risk of being homelessness. Homeless under other Federal status, is defined as fleeing/attempting to escape domestic violence. Examples of homelessness include couch surfing, sleeping in shelters, and living in a car.

Our proposal was to build homeless shelters out of shipping containers.

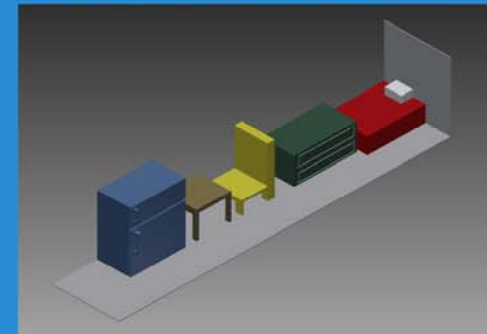
## Key Observations:

During this project we stumbled along multiple different questions: how will we provide energy and water, how long should we provide shelter for a person, should we be targeting families or individuals, and who gets priority?

Two combined container house



A Single container house



## Results:

We decided that we would provide energy and water through PGE, and possibly some use of passive solar energy. We also would provide free housing for six months, and children have priority, then females, and lastly males.

## Conclusion:

Because homelessness is increasing in our community, our solution to the problem is to create housing for the homeless using shipping containers. Our solution is the best fit for this problem because shipping containers are cheap, durable, and easy to customize.

**Tran Joseph, Anissa Rosbaugh, Sydne Scott, Hanan Yassin**