

Jul 12th, 3:55 PM - 4:00 PM

# Incorporating ETDs in the IR, One Department at a Time

Kristen Hoffman  
Seattle Pacific University, [khoffman@spu.edu](mailto:khoffman@spu.edu)

Follow this and additional works at: <https://pdxscholar.library.pdx.edu/nwirug>

**Let us know how access to this document benefits you.**

---

Hoffman, Kristen, "Incorporating ETDs in the IR, One Department at a Time" (2016). *Northwest IR User Group*. 13.

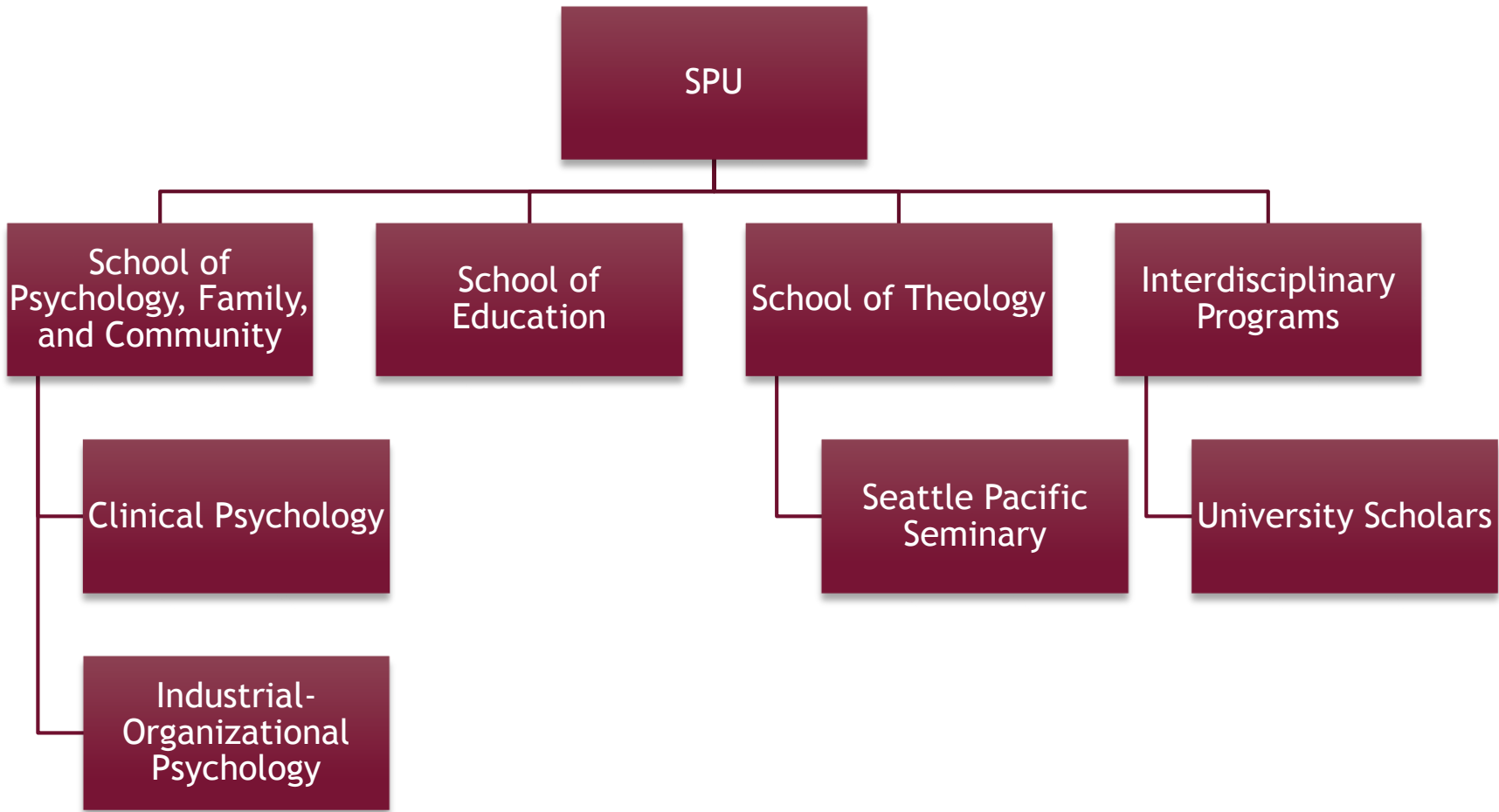
<https://pdxscholar.library.pdx.edu/nwirug/2016/Presentations/13>

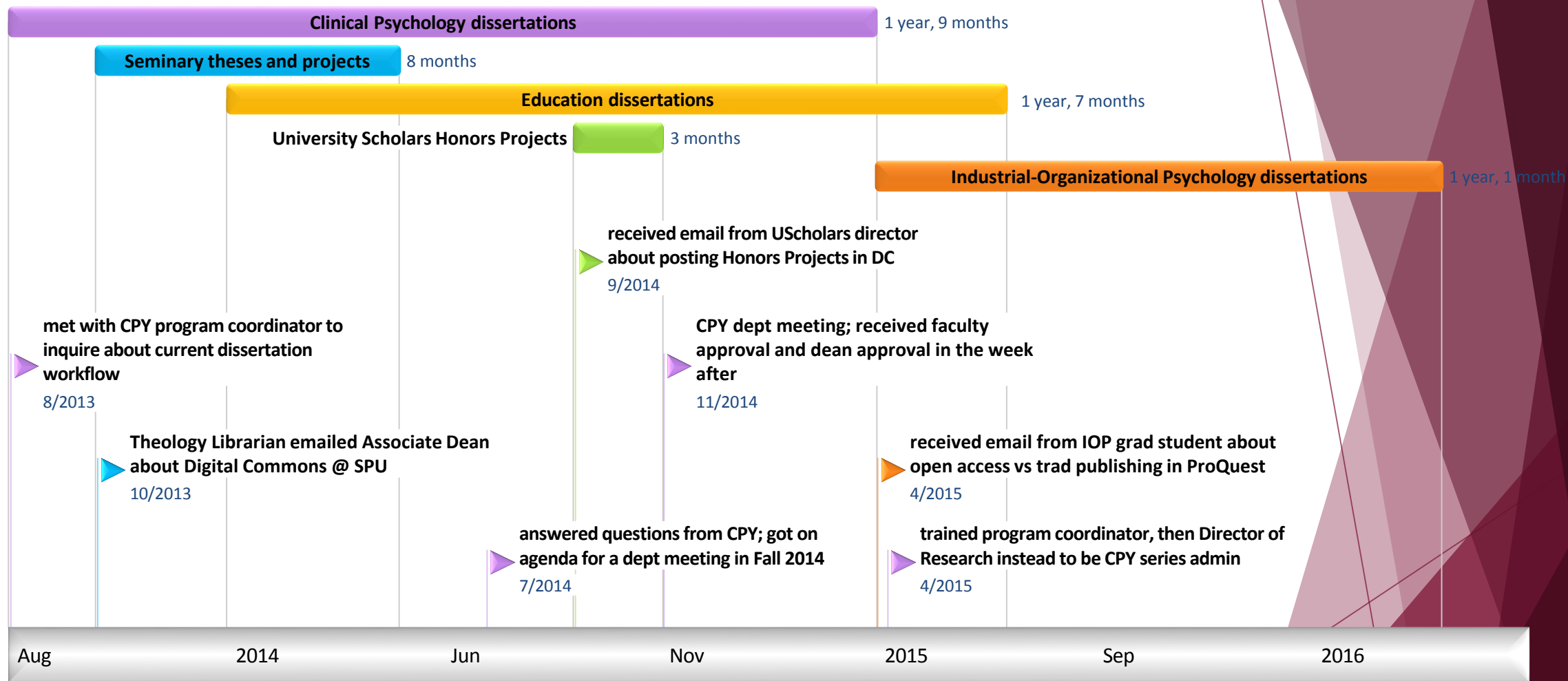
This Lightning Talk is brought to you for free and open access. It has been accepted for inclusion in Northwest IR User Group by an authorized administrator of PDXScholar. Please contact us if we can make this document more accessible: [pdxscholar@pdx.edu](mailto:pdxscholar@pdx.edu).



# Incorporating ETDs in the IR, One Department at a Time

Kristen Hoffman  
Psychology and Scholarly Communications Librarian  
Seattle Pacific University  
khoffman@spu.edu  
Northwest Institutional Repository User Group  
(NWIRUG) Meeting, 12 July 2016





Student  
emails  
**Seminary**  
thesis to  
Associate  
Dean

He approves  
it and sends  
it to the  
series admin  
(Theology  
Librarian)

Series admin  
requests that  
student sign  
and return  
license  
agreement

Series admin  
posts to  
DC@SPU

Student submits directly to  
**Clinical Psych/Industrial-Org  
Psych** series in DC@SPU

Series admin (Director of  
Research) approves and  
posts

Student submits  
directly to **Education**  
series in DC@SPU

Series admin (Graduate  
Programs Manager)  
approves and posts

Student submits directly  
to **Honors Project** series  
in DC@SPU

Series admin (Director  
of University Scholars)  
approves and posts