

1-1-1985

Portland State Perspective; Fall 1985

Portland State University

Follow this and additional works at: <https://pdxscholar.library.pdx.edu/perspective>

Let us know how access to this document benefits you.

Recommended Citation

Portland State University, "Portland State Perspective; Fall 1985" (1985). *Portland State Perspective*. 23.
<https://pdxscholar.library.pdx.edu/perspective/23>

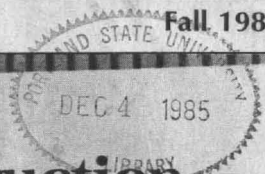
This Article is brought to you for free and open access. It has been accepted for inclusion in Portland State Perspective by an authorized administrator of PDXScholar. Please contact us if we can make this document more accessible: pdxscholar@pdx.edu.

LD4349
-A27
P685

PSU Perspective

Portland State University Alumni News

Fall, 1985



The Art of Construction

page 1

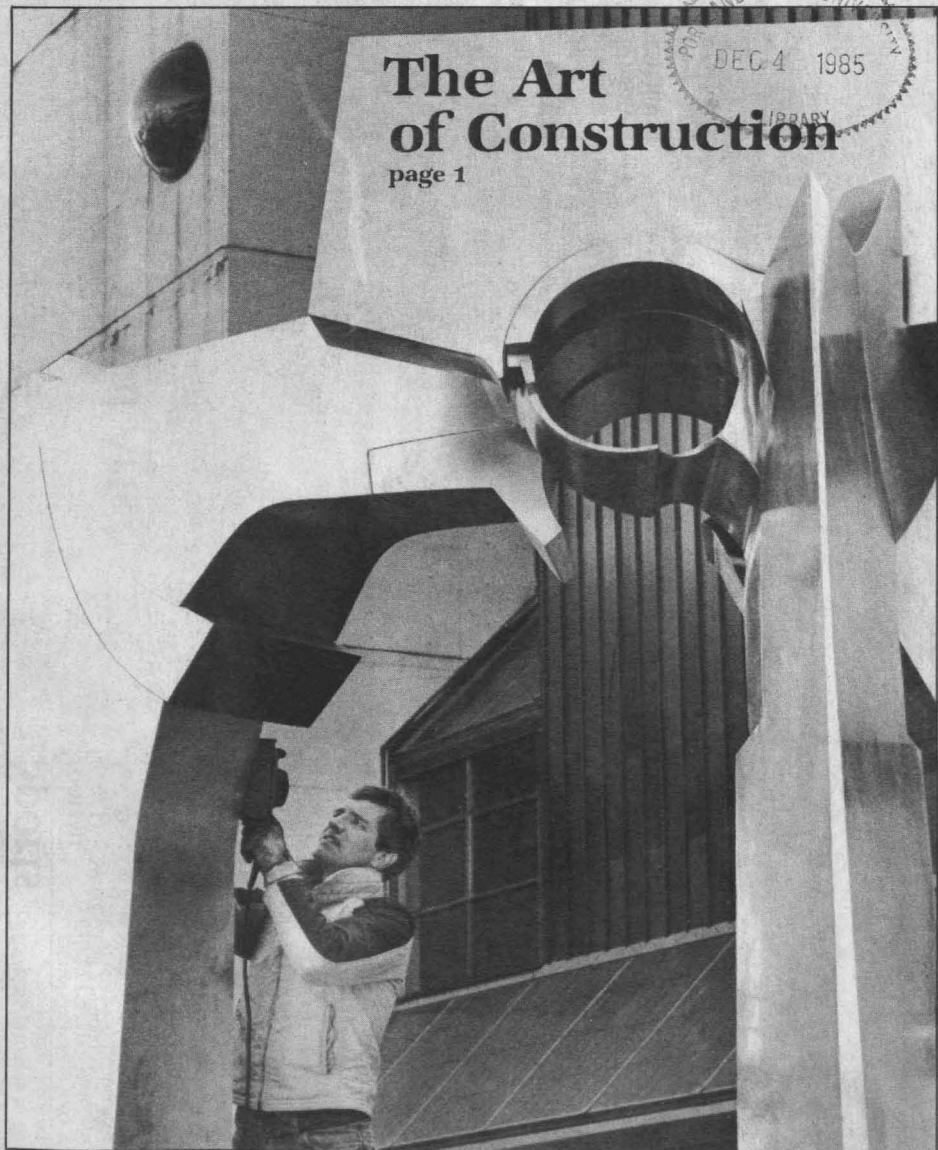


Photo by Cynthia D. Stowell

PSU Perspective

Portland State University
Alumni News

Fall 1985



Sculpture heralds new campus building phase

The Oct. 24 unveiling of "Yankee Champion," Portland State's newest sculptural acquisition, was a happy occasion in its own right. The piece, created by La Grande, Ore. artist Tom Morandi, was long in coming.

Commissioned in 1984, the stainless steel tripod was installed at the corner of S.W. Broadway and Montgomery five years after completion of the Professional Schools Building, the construction of which included the cost of acquiring art.

But the arrival of the sculpture and the attendant celebration also served as a kind of herald for the first new construction activity on campus since 1980. Thanks to action by the state legislature and the State Board of Higher Education, the PSU campus will soon witness the once familiar sights and sounds of major building construction and remodeling.

More than \$15 million in projects are on the drawing boards or already approved. Included are the second phase of the Professional Schools Building, new student housing and remodeling of the University's computing center. The University is also adding to its inventory of academic buildings an existing

structure that for two years has housed the Portland Center for Advanced Technology.

Funding sources are as varied as the projects themselves, including the new state lottery, private foundations, parking and building fees, and general fund tax money.

More building, of course, means more art. At the Morandi sculpture dedication, PSU President Joseph Blumel remarked, "While we are excited about this new construction from an academic point of

view . . . we look with equal anticipation toward the possibility of adding to the public's art collection through the "Percent for Art" program."

The changes that the PSU campus will experience in the next two years are reviewed here.

Portland Center for Advanced Technology

In 1983, the University moved its electrical and computer engineering

Continued on page 2

Inside

Racist memorabilia / 3

The many faces of racism are reflected in black studies professor's collection

China Journal / 5

PSU engineering prof returns to his native China as the leader of an Alumni Tour

On assignment / 6

A day in the life and thoughts of photojournalist Michael Lloyd ('75)

An All-Star Event / 9

PSU invites alumni and friends to celebrate its 40th year

AlumNotes / 4

Foundation News / 9

Campus News / 10

Calendar / 11

Also

Special Supplement:

1984-85 Annual Gifts Report

On the cover: Artist Tom Morandi puts finishing touches on "Yankee Champion," PSU's newest sculpture.

A look at "Yankee Champion"

Artist: Tom Morandi, resident of La Grande, Ore. and member of the art faculty at Eastern Oregon State College.

Location: Triangular lawn in front of Professional Schools Building, S.W. Broadway and Montgomery.

Size: 15 feet high; 1.5 tons

Material: Stainless steel

Method: Pieces cut by CO₂ arc from 3/16" and 1/8" sheets of stainless steel, welded together, ground down and sanded. Lifted into place in three parts by crane.

Cost: \$29,000

Funding: "Percent for Art," a state program that sets aside 1% of the construction cost of public buildings for the acquisition of art.

Artist's interpretation: "The lyrically abstract nature of its components is discreetly balanced by the delicately interlocking joints in the upper sections, thus offering a visual acknowledgment of the complex amalgam of humankind and technology required of a contemporary university."

Construction sights and sounds to return to PSU campus

Continued from page 1

programs into this building at 1800 S.W. Sixth under a lease arrangement with the city of Portland. Following lengthy negotiations, PSU agreed this fall to purchase the PCAT building for \$2.1 million plus rental payments. Original asking price for the building was \$3.3 million.

Purchase of PCAT was made possible through a combination of funds, including an \$825,000 grant from the Murdock Charitable Trust as well as building and parking fees. The State Board of Higher Education has extended the PSU campus boundary to include PCAT, the first permanent PSU building east of Sixth Avenue.

Professional Schools Building

Ground will be broken in February on the second phase of this complex on the block bounded by S.W. Sixth and Broadway, Montgomery and Harrison. Some \$7 million in state lottery funds will pay for the six-story structure, which will house the School of Business Administration, the International Trade and Commerce Institute and faculty from the School of Education. Completion is set for Fall 1987.

The hallmark of this building will be its technological sophistication, with instructional labs, case study rooms and an auditorium wired for advanced audio-visual, communications and computer applications. The building also will include meeting and conference rooms.

Phase II will be joined to the existing Phase I (School of Education) utilizing common elevators and utilities. The skybridges which now connect Cramer Hall and Smith Center with the University Services Building and parking structure will be extended to the north side of the

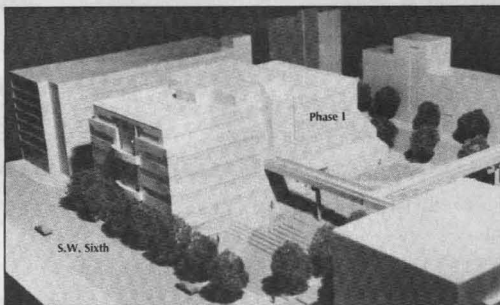
Professional Schools Building, completing a system of skybridges across Broadway, Harrison and Montgomery.

Upon completion of Phase II, Francis Manor (School of Urban and Public Affairs) will be razed and its programs moved to East Hall. A brick plaza will be built around the Morandi sculpture and a new triangular lawn with diagonal walkways will foreshadow Phase III of the Professional Schools Building, one day to house Urban and Public Affairs and the Graduate School of Social Work.

Computing Center

Nearly \$400,000 has been earmarked for remodeling of the University's computing services center in Shattuck Hall to make way for increased academic computing capability. The remodeling work began this month and will include construction of a mezzanine in the student terminal area and better access for the computer operators.

The University is in the process of replacing the mainframe Honeywell computer which is overloaded and unable to run some of the more sophisticated programs now in use at PSU. Installation of a second



Phase II, Professional Schools Building

computer for the UNIX system for use in computer science and engineering also is planned. Over the next four years, close to \$2 million will be allocated from within existing resources for new computer systems.

Student Housing

A first-of-its-kind project on PSU's drawing boards is the planned construction of student housing on the University campus (between Mill and Montgomery on Eleventh). Plans call for approximately 96 one-bedroom apartments to be managed by Portland Student Services, along with 170 parking spaces. Units would rent for under \$300 per month.

The University hopes to have a proposal for approximately \$5.5

million in project monies before the State Board in January. Approval of the plan, which would be funded with building and parking fees, would mark the first construction of student housing within the PSU campus boundary.

Deferred Maintenance

Approximately \$1.1 million in general fund money has been allocated to PSU for deferred building maintenance over the next two years. Among the projects are the re-roofing of PCAT, repairs to the HPE swimming pool, a new air conditioning unit for Cramer Hall, and some exterior repairs and other work postponed during past years due to lack of funding.



WANTED

Future engineers, artists, accountants, computer experts, scientists, social workers, musicians, historians, educators, and other top-flight prospective students for PSU.

Alumni and friends are encouraged to recommend high school and transfer students you know (including your own sons and daughters) who would benefit from continuing their education at Portland State. Please complete and mail the attached form to Alumni Office, Portland State University, P.O. Box 752, Portland, Oregon 97207. Or telephone: (503) 229-4948.

Your name _____

Address _____ City _____ State _____ Zip _____

Student's name _____

Address _____ City _____ State _____ Zip _____

PORTLAND STATE UNIVERSITY ALUMNI

PSU Perspective

PSU Perspective is published quarterly during the year by News and Information Services for alumni, faculty and staff and friends of Portland State University.

Editor Cynthia D. Stowell
Contributors Clarence Hein '65
Cliff Johnson
Calendar Editor Pat Scott

Change of address: Send both new and old addresses to PSU Perspective, P.O. Box 751, Portland State University, Portland, Oregon, 97207.

Parents: If this issue is addressed to your son or daughter who no longer maintains a permanent address at your home, please notify the PSU Alumni Office (503-229-4948) of the new mailing address.

PSU supports equal educational opportunity without regard to sex, race, handicap, age, national origin, marital status, or religion.

Share your culture with an International student

A rewarding experience awaits you and your family when you participate in PSU's homestay program.

By acting now, you and your family can provide an international student with a home during winter term. While you introduce an international student to American life, your guest will share his or her cultural background with you... language, art, food, dance, music, history, holidays.

For a mutually rewarding experience, investigate Portland State University's homestay program. Call International Student Services, 229-4094, today for complete details.

PSU ALUMNI PROGRAMS

P.O. Box 752
Portland, Oregon 97207
(503) 229-4948

Symbols of racism help define prof's mission

Black Studies professor Darrell Millner uses his unusual collection to drive home the abstractions of race relations.

by Cynthia D. Stowell

He treasures every piece and he hates every piece.

When he has emptied the cardboard boxes and the table is filled with cookbooks, banks, dish towels, art prints and swizzle sticks, he sits back and proudly surveys his ten years of collecting. But the items leer at him. Those faces repeated on every object, with their surprised eyes and big, toothy grins, seem to be saying, "O.K., professor, what are you going to do about us?"

Darrell Millner has let no dust settle on his "symbols of American racism." The collection is used regularly by the PSU Black Studies professor to make the abstract notion of racism more graphic to his students.

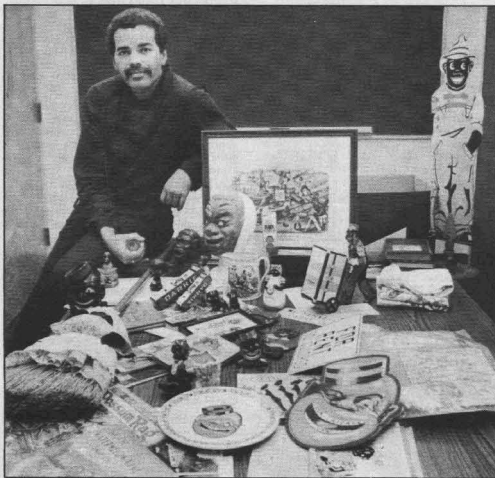
"In the early '70s, my students had a background in the '60s civil rights movement," said Millner, "but later in the '70s, things that were personal and concrete to me were just abstractions to them. They were too young when Martin Luther King was shot and weren't alive when Malcolm X was assassinated. So I started bringing these things to class and they opened up avenues of discussion in a dynamic way."

But there is a moment of speechlessness when the collection is first revealed. It isn't easy to fathom the historical and cultural meaning of an Official Runnin' Nigger Target, Darkie Toothpaste (a British product sold in Southeast Asia), or a broom in the shape of a "mammy." What motivates people to produce such objects and what kind of people buy them?

"I can't answer that," says Millner. "Racism is not a logical thought process. It's an aberration."

Millner recognizes that many of his items were born of "an element of unconsciousness, a lack of malice." What they reveal, however, is the extent to which black and white cultures have been isolated from each other throughout American history.

"In the legally segregated society that we had in America for years, there was no real interaction between the races," explained Millner. "Individuals couldn't know each other as human beings. So a pattern of stereotyping developed, replacing real intercultural knowledge and communication. These stereotypes were reinforced by items like these."



Darrell Millner and his racist memorabilia

He points to the "Fine Old Dixie Recipe Book" and a set of dish towels bearing illustrations of blacks in menial jobs. "These educate the majority culture about the limitations they can expect of the black population," he says.

Millner likes to look at his collection as a continuum that shows both improvement in public attitudes and some particularly stubborn images that time won't lay to rest. He picks up an Aunt Jemima figurine.

"This dates back to June of 1985," he says, straight-faced.

By itself, the Aunt Jemima piece is relatively inoffensive, Millner admits. "But what emerges after you see piece after piece is the accumulation of a very narrow range of images."

Millner's racist memorabilia don't come exclusively from the fringes of

Some of Millner's "favorites" among his collection — if there can be such a thing as a favorite racist item — are the menu, plate and match holder from Portland's own Coon-Chicken Inn. The popular Sandy Boulevard restaurant, which closed in 1947, featured a huge, smiling black face through which patrons stepped to enter the building.

"The food was excellent," said Millner, "and there was always a line of people waiting to get in." And in talking to the white patrons and employees of the Coon-Chicken Inn, Millner has invariably heard the remark, "We never thought at the time how this might make blacks feel."

It is important to be forgiving of the past, even such a recent past, Millner feels. "We can't judge earlier time periods by the reality of modern

because of the participation of blacks at the production level and because of rising expectations of a more "sensitized" American public.

But this is no reason to be complacent, adds Millner. Years of stereotyping have, not surprisingly, affected the way black people view themselves. "The internalization of these negative images is more destructive to the minority population than anything the majority population feels," he says. "If I'm able to hit a few licks at this, I feel good."

The hobby that started a decade ago for Millner, who says he has a predisposition for collecting, has gained momentum and continues to bring many "heart-warming" donations from the public. Last summer, the director of public health in the city of New Orleans, Brobson Lutz, read an Associated Press story about Millner and decided to donate his own similar collection, valued at \$8-9,000, to PSU's Black Studies department. "I guess he selected us because of the way we try to use our material," said Millner.

Viewing Millner's collection is a lot like watching a 25¢ movie in an "adult reading room." You're fascinated and can't wait to describe it to your friends, but at the same time you're sickened. The collector agrees.

"It's very important that when you use this type of material, it's in an educational context. You have to be careful not to reinforce concepts instead of destroying them."

Gazing at the familiar, much-handled pieces in his collection, Millner remarks with a sigh, "My feelings about this are naturally mixed. Some of the objects — and the material I cover in my black history classes, too — are personally painful to me. I have to study and immerse myself in some very bloody and violent elements of history." He sighs. "It can wear you down. But I feel it's necessary to pass this information down through the generations."

And as the eerily similar faces are packed away in the boxes, Millner reflects on the challenge they pose to him.

"In America we've had some victories and it's possible for a semi-middle-class professor — or student — to be insulated from racial realities.

"What this collection does is act as a reality check for me. It's a constant reminder of what my mission has to be, what my responsibility is."

(Darrell Millner, the head of PSU's Black Studies Department since 1983, has a Ph.D. in education from the University of Oregon. He has been a member of the PSU faculty since 1974 and has taught Afro-American Literature, Afro-American History, Oregon Afro-American History, and Black Culture in American Cinema.)

"What emerges is the accumulation of a very narrow range of images."

American culture or from far away. The Runnin' Nigger Target is a contemporary artifact found in gun stores and living rooms throughout the Northwest, he said. And nothing could be more a part of the American mainstream than National Geographic magazine, which in 1934 carried an ad for General Electric dishwashers showing a black female servant at a sink, smiling and saying, "I'm sure you get a good job now!"

consciousness," he cautions. "Instead, it's our responsibility to examine our own period, to look at the things we do today that function in the same way as these earlier things."

The depiction of blacks in the media — including television, films and advertising — is "healthier today than at any other time in U.S. history," Millner believes, both

AlumNotes

Compiled by Cliff Johnson

Vanport

Elaine Cogan, a Portland writer and businesswoman who also is a partner in the Cogan Sharpe Cogan Partnership consulting firm, has been hired as interim editor of the "Portland Jewish Review," which is distributed to more than 5,000 households across Oregon.

Margaret J. Dobson has been named executive vice president of PSU, effective with the appointment of a permanent vice president for academic affairs at the University. Dobson, who joined the PSU staff in 1955 as a women's P.E. instructor, has been interim vice president since 1983.

Slate Sen. Glenn Otto, the East County 11th District Democrat from Wood Village, Ore., has been elected chairman of the Mt. Hood Community College District Board.

Peter G. Sukalac now works as the executive director of the Salem Economic Development Corp., Salem, Ore.

'56

Ray T. Gritzmacher (BS) has retired from the Portland Public Schools after 29 years of teaching, 22 of them at Peninsula Elementary School. He looks forward to relaxing and fishing.

'57

Kirby Hall (BS) has been named West Coast regional manager for the Western Kraft corrugated container division of Willamette Industries.

Ellery M. Pierson, Ph.D. (BS) is the manager in the Office of Planning, Research and Evaluation for the School District of Philadelphia, Pa.

'58

Herbert K. Beals (BA), formerly a planner with the Metropolitan Service District in Portland and now a self-employed writer-historian, has authored an English translation of the 200-year-old diaries of the Spanish explorer, Bruno de Hezeta. The book, *For Honor and Country, the Diary of Bruno de Hezeta*, is Volume 7 in a series by Western Imprints, the Press of the Oregon Historical Society. Beals has another book on Spanish explorations in progress, entitled *Juan Perez on the Northwest Coast: Four Documents of his 1774 Voyage*, which is due to be published in the same series within the next two years.

Richard J. Kennedy (BS) is a Newport, Ore., author of 17 children's books. His most recent work, *Arby's Eyes* (Harper and Row) is one which the publisher and critics expect to reach a much wider audience. Despite the acclaim, Kennedy continues to work at the Hatfield Marine Science Center at Newport.

'61

Russell Lambert, Jr. (BS) is director of communications and development for Far East Broadcasting Co., an international religious radio broadcasting firm headquartered in La Mirada, Calif.

'62

Wayne E. Atteberry (BS) is vice president for real estate finance at Standard Insurance Co., Portland. He is regarded as the man most responsible for orchestrating the numerous factors that have made the Sunset Corridor in Washington County, Ore. such a hot property in the current industrial real estate market.

Clarence A. Porter (BS) was named dean of the Institute of Natural Sciences at Montgomery College, Takoma Park, Md. in January of this year.

'63

Sheilah Church (BS) is the new communications specialist and volunteer coordinator for School District 15 in Forest Grove, Ore. Her primary responsibility involves developing and monitoring the district's communications program.

Richard D. Engstrom (BS), a development officer at Clackamas Community College, Oregon City, Ore., is also teaching social work part-time this fall at Pacific University, Forest Grove, Ore.

Frank H. Lagesen, (BS), a Portland attorney, recently served as one of three members on a trial panel of the Oregon State Bar's disciplinary board which recommended in mid-September that former campus radical David Sylvan Fine not be permitted to practice law in Oregon.

'64

James R. Stehn (BS), principal trumpet with several orchestras in the Los Angeles area and leader of the West Los Angeles Brass Ensemble, gave a recital of baroque brass music Sept. 20 at the University of Oregon's School of Music.

SWIM & GYM

Alumni Benefits Card
229-4948

'65

James Cronin (BA, '80 BS), has been named general manager of Portland Mailing Services, Inc., Portland. He is a former business journalist and editor.

Martin I. Friedman (BS), president of the Family Head Injury Support Group since June, 1984, has been appointed as one of five members on the state Occupational Therapy Licensing Board.

Lewis Winchester (MSW), who devoted three decades to addressing Portland's social problems, has retired as manager of the Albina Human Resources Center. He began his career in human services in 1955 when he went to work for Multnomah County as a social worker in Portland's Sellwood neighborhood.

'67

Mae E. Gordon (BA), a biostatistician at Washington University Medical School, St. Louis, Mo., has been appointed to the Vision Research Review Committee of the National Eye Institute. She also ran in two marathons last year.

Richard Morris, Ph.D. (BS, '69 MS), assistant professor of electrical engineering at PSU, has accepted a half-time appointment as assistant dean in PSU's School of Engineering and Applied Science. He will continue to teach and do research in addition to his new duties.

'68

Bill Deiz (BA) has formed Corporate Video, Inc., a two-man operation in Portland of which he is president. The firm produces video presentations used in business sales, promotions, employee communications and media relations.

'69

John E. Andersen (BA) has been chosen as the new community development director for the city of Gresham, Ore. He formerly was community development director for Deschutes County, Ore.

Jef Sgittrey H. Barker (BS) is the current sergeant in charge of auto theft and fraud detections working for the Portland Police Bureau.

Anne L. Elliott (BA) was recently named the 1985 Oregon Coach of the Year for Special Sports.

Robert P. Johnson (BS), a Portland attorney, has been appointed to fill a vacant seat on the North Clackamas School Board. Johnson was selected from a field of nine candidates by a board vote of 4-1.

Maj. Dennis J. Lenahan (BS) has been named commander of a satellite operations group detachment stationed at Fairchild Air Force Base, near Spokane, Wash. He has served in the Air Force for 16 years and has held assignments as a jet instructor pilot, space systems officer and future plans officer for NORAD in Colorado.

Ralph W. Shoemaker (BS) was recently appointed senior measurement systems engineer at Bonneville Power Administration's Vancouver, Wash. facility, and is a senior member of the Instrument Society of America as well.

Judy Lee Vogland (BS, '80 MFA), an art teacher at Hillsboro High School, Hillsboro, Ore., for the past 15 years, has designed large decorative banners which will appear each winter during the next four years at Pioneer Courthouse Square in downtown Portland.

Dennis Watson (BS) is a professor at Clark College, Vancouver, Wash. He also operates his own computer consulting business with clients located in Portland and Beaverton, Ore.

'70

Scott Hannigan (BS, '78 MS) has been promoted to director of Pacific Power & Light Co.'s Economic and Community Development Department.

John D. Kirby (BS) has been appointed to the Oregon Expo '86 Committee, which is coordinating the state's participation in the 1986 World Exposition in Vancouver, British Columbia. Kirby owns Kinney Brothers and Keele Hardware Co. in Ontario, Ore., where he is the current president of the city's Chamber of Commerce.

Barbara McAllister (BS) is a Portland-area language skills therapist and tutor of adults suffering from dyslexia.

Roger M. Nejad (BS) has been promoted to head chemist at Centennial Mills, Portland. He has been employed there as a chemist since 1974.

Victor M. Russell (BA) is a personnel management specialist with the U.S. Army and works at the Pentagon in Washington, D.C.

Barbara Skorney (BS, '74 MSW) and her husband **George** (Vanport) operate Laurelhurst Manor, a Northeast Portland residential treatment center for persons with alcohol and other chemical dependency problems, including adolescents.

'71

Keith L. Cubie (BS) was recently appointed director of the Planning Department in Douglas County, Roseburg, Ore. He also has been elected to a position on the Roseburg District 4 School Board. He and his wife, Barbara, have three children.

Ben G. Neumayer (BS), a certified public accountant and partner in a CPA firm in The Dalles, Ore., is the 1985-86 president of the Mid-Columbia Chapter of the Oregon Society of Certified Public Accountants.

John R. Oreskovich (BS, '84 MA) has been awarded a new Fulbright grant to conduct research in Yugoslavia. He is one of some 2,500 Americans being sent abroad during the 1985-86 academic year under the Fulbright exchange program.

'72

Patrick Burden (BS) is a self-employed consulting economist in Anchorage, Alaska. During the summer, he uses his own vessel to fish commercially for salmon in Alaskan waters.

Pau Jellum (BS), formerly principal of the Willamina Middle School, Willamina, Ore., has been named principal of Renee Middle School, Newberg, Ore. He is former mayor of Dayton, Ore.

Continued on page 8

Gifts

As simple as ABC

This year give PSU Alumni Benefits Cards. Your family and friends will thank you all year long for these special gifts:

- Sports and recreation
- Library privileges
- Insurance benefits
- Travel programs
- Parking privileges
- Discounts on social, cultural and athletic events

Order your holiday gifts today... as simple as calling 229-4948. ABC Cards — offered only to PSU Alumni.

PSU ALUMNI PROGRAMS

P.O. Box 752 • Portland, Oregon 97207
(503) 229-4948

China Journal

A PSU professor's thoughts on visiting his native country

For 21 days last summer, a group of 17 people who had signed up for a PSU Alumni Tour of China got to know the distant country and each other. They covered 3,500 miles and crossed great cultural and physical barriers. Tour leader Puh Chen, professor of mechanical engineering at PSU, kept a detailed diary chronicling the sights and moods of his native country, visits to Chinese universities, illnesses among members of the group, and a bittersweet reunion with his family. These excerpts are a very small part of Chen's writings.

July 24 It has been a long anticipated trip, not only for me but for all 17 of us in our group. Last night I was down to the last detail — a medicine bag filled with vitamins, first aid kit, throat spray and Lomotil.

July 27 Beijing Half of us had Chinese breakfast, the rest Western-style. That is the way we are going to be for the rest of the trip. After breakfast, many of us changed money at the hotel. A dollar is worth about 2.9 Yuans of Reminbi (people's money). A couple of years ago, a dollar was worth only two Yuans. . . . Many people were already in line at Tiananmen Square to view the Mao Zedong Mausoleum. We cut in line — a tourist's privilege. Mao's body was encased in a transparent crystal sarcophagus. His face looked plastic. . . . Our first university visit was to the Second Foreign Language Institute. The Vice President hoped that I could find someone from PSU to teach English in his school. . . . Tonight we went to a Chinese opera in a local theater. Many did not enjoy it because of the language barrier, but were impressed by the costumes and dance.

July 28 Beijing Tianan, Temple of Heaven, is an impressive building where the Emperors prayed for the country on January 15 every year. It was built in 1420 but was destroyed by lightning and rebuilt in 1890. Steve Kosokoff (of the PSU speech communication department) proudly pointed out a 38-meter high dome which had supporting pillars made from Oregon Douglas fir.

July 29 Great Wall Waiting and taking pictures, it took me 36 minutes to get to the summit of the wall, along the steep left side. The view was awesome, and respect for the "Wonder" was deep, but the wall failed to prevent northern invaders from conquering China-proper. . . . At our Peking Duck dinner, Bev thought the soup was a finger bowl. . . . Celeste (not her real name) is fasting because of digestion problems.

July 30 Xian This ancient capital of 16 dynasties is still surrounded by a rectangular wall. We were surrounded, too, with many children peddling gift items. We got a doctor to see Celeste.

July 31 Morning started out with Celeste not doing well. The doctor recommended that she go to a hospital. She is a strong-willed person but I was more persuasive and she finally agreed to go. . . . Visited Hua Ching hot springs, an embroidery factory and an ancient Islamic mosque.

August 1 Everyone who went to Xian Jiaotong University this morning appreciated the special visit. Jacob Fried, a visiting professor of anthropology from PSU, was there to meet with our group, too. I went to the mechanical engineering labs, others went to the library and the kindergarten. . . . I met a pretty salesgirl in an arts and crafts place who asked me many interesting questions about the young people in the U.S., such as how they find mates and when they get married. She was fascinated by my answers. . . . We checked Celeste out of the hospital. Thank God she was fully recovered! I feel good about my insistence.

August 2 Luoyang At the plaza in front of the train station, under the moonlight at 3 a.m., we encountered an unforgettable scene. Many people were sleeping there, waiting for the morning trains. It reminded me of a scene from "Gone with the Wind," where wounded soldiers were lying in the streets of Atlanta. We had to be careful where we stepped. . . . The Longmen Grotto is where many statues of Buddha and his disciples were carved on solid rocks. I was deeply impressed by the creativity and craftsmanship.

August 3 Zhengzhou The Yellow River was truly muddy and yellow. A statue of a mother and son in Yellow River Park symbolized the river as the cradle of Chinese civilization. . . . Our visit to a commune was interesting. They no longer use the word "commune" but call it "village" now. There are about 120 families living in two-story apartment complexes, and they have milk cows, mules, farm machinery, a soy milk factory, apple farm and fish pond. . . . At Zhengzhou University, PSU's sister university, I responded to President Che and offered warm greetings from PSU. I ended by saying, "I wish that the sister university relation will be as long-lasting as the streams of the Yellow River and the Almighty Columbia."

August 5 On the bus out of Zhengzhou, we saw corn fields and I sang "Oh, what a beautiful morning." At Shalin Temple we learned about



Photos by Stephen Kosokoff

Left: Puh Chen at Longmen Grotto
Below: The tour group at Hua Ching Hot Springs
Center: Street scene in Xian
Bottom: Katherine Shen, Puh Chen and Xian street vendors



thirteen monks who rescued Emperor Tan Taizhong from enemy attacks. The Emperor later granted them the right to drink wine and eat meat, unusual in Buddhism.

August 6 Emily (not her real name) was ill with intestinal problems. Dr. Wang from the Provincial Hospital thought she might have a contagious disease because there had been an outbreak. I resisted and convinced him to come back in the morning. In the meantime, Emily asked for two of my Lomotils and by morning she was doing fine.

August 7 Shanghai We visited the Arts and Crafts Research Center, which creates special designs for double-sided embroidery, bamboo carving, jade carving, etc. for other arts and crafts industries to follow. . . . After dinner we attended the Shanghai acrobatic show. I could not figure out how in a split second a magician changed a lady and a small dog into a German Shepherd. It was a good two-hour show for 35¢.

August 8 Students in the kindergarten at Chao Yang Village, a local workers' neighborhood, performed for us and a 4½-year-old boy played piano. The neighborhood organization had many rules and regulations posted outside in a public



area. . . . During a heavy rain downtown I sought shelter in a store where I bought several silk ties.

August 9 Homecoming to Fuzhou I found the big banyan tree near the riverbank, then a villager led us through the alley to my house. My uncle (the son of my grandfather's brother's son, Chinese custom) was at the house and I surprised him greatly. I found myself speaking in the native dialect, which I hadn't spoken since I left Fuzhou 36 years ago. Upstairs I searched for my ancestors' name tablets, but I couldn't find them. Instead I found a plate filled with names on red paper and copied down the names under the candlelight. I walked to my bedroom without being directed. Everything was old and not

Continued on page 7

Shooter finds challenge in every assignment

It's a tough way to start the day — with a face full of spraying ice — but at least news photographer Michael Lloyd (75) gets his picture. A Winterhawks hockey star has been immortalized and a day in the life of a photojournalist has begun.

Back at The Oregonian, a little yellow slip of paper on the assignment board tells Lloyd to go to Grant High School. Space shuttle astronaut Gordon Fullerton is due to address students of his alma mater at noon.

Lloyd is a product of PSU's now-defunct journalism department, which was partly a product of the adjunct teaching of Oregonian and Oregon Journal staff members. "All of my photography was from David Falconer, who was chief photographer for The Oregonian at the time," said Lloyd. He also took feature writing from Oregonian reporter Early Deane and advanced reporting from the Journal's managing editor Ed O'Meara. Then Lloyd paid them back.

The PSU student started working at the downtown daily on a "part-time part-time" basis in 1972, and by 1974 he was a full-time staffer, working nights and weekends while he finished school. After graduation, he took over a couple of Falconer's classes for a year and advised the 1978 Viking yearbook staff.

Lloyd was part of a steady stream of talent that left PSU classrooms for the newsrooms and darkrooms of the two daily papers. The Oregonian photo staff currently boasts four PSU grads.

Fullerton is late and grabs a sandwich with the principal. Not picture material. Lloyd sets up his tripod in the middle of the stampeed in the hall so he can catch the astronaut on his way to the auditorium. But Fullerton takes an unexpected route. Inside the auditorium, the light is hopeless. Lloyd packs up disconsolately and waits on the front lawn for a set-up picture.

The photographer, who was once criticized by fellow students for his documentary style, prefers to shoot spontaneously. "I'm not a big previsualizer of pictures. I think you owe it to your subject to wait and see what he's like." But Lloyd does his share of studio work. On the sports page that morning was Lloyd's color photo illustrating Olympic gold medalist Mary Lou Retton's new career as a millionaire. "It's kind of hard to make an exciting picture of a cereal box, a book and an exercise jersey. You know, it just doesn't sing!"

His dream assignment — if he can't do the swimsuit issue of Sports Illustrated — is pretty close to the one he was sent on last winter. He spent three weeks with the Northwest Medical Teams in Ethiopia, a trip that



Story and photos
by Cynthia D. Stowell



turned out to be "gratifying personally, professionally, spiritually, and any way you slice it." The visible results were a 12-page text and photo supplement to The Oregonian called "Small Victories" and Lloyd's own slide-tape presentation. Still, Lloyd was dissatisfied. "I felt like I left behind a lot more than I ever brought back," he said. "I got only slightly below the surface."

Getting below the surface to show "what makes people tick" is Lloyd's goal for himself as a photographer. "A lot of photographers and journalists are fairly decent amateur psychologists," he maintains. "Unlike television, we can get down to what people are feeling instead of just what they're saying. But I'm not here to make judgments either."

Politics pose a particular challenge for Lloyd because there is so much "public face" to get beyond. But a couple of long-term, in-depth assignments — the property tax battle in the 1983 state legislative session and two separate weeks with Portland Mayor Bud Clark — have made him itch for the upcoming gubernatorial race.

Fullerton emerges from the school and is surrounded on the portico by curious boys. The girls stay at a

distance. It's a natural, and Lloyd goes into action. The smile comes back to his face. The assignment has been saved.

"I don't believe in the philosophy of journalistic objectivity," says Lloyd. "You have to make so many subjective decisions about what you're shooting and when you shoot it and what you're ultimately going to present to the public. But I believe very much in fairness."

Lloyd thinks like a full-fledged journalist, a status only recently accorded news photographers. The days of being a sidekick for the writer are over, says Lloyd, at least at The Oregonian where photographers are more involved than ever in what happens to their work after it's turned in. Lloyd is also a part-time picture editor, working closely with the sports department to combine words and pictures to their best advantage.

He groans when he picks up his next assignment at 3:30 p.m. Something for the 'Style' section. He walks over to the newsroom to consult with the fashion editor and the two of them drive down to the office of a stylish young career woman. "I'm just going to shoot and run," Lloyd had predicted. But the



office setting is interesting, the dress pretty, and soon the photographer is humming along and the hour goes quickly. By the time he gets back to the photo department, he's on overtime and he still has to lay out a sports page.

Trust is a big issue for Lloyd in his work as a photojournalist. "Most

Continued on page 7

Michael Lloyd

Continued from page 6

people automatically don't trust you because you're from the newspaper," he says. "And it's true, I have a lot of power as a photographer. I can make someone look like a saviour or an ass."



Four PSU alumni who work in *The Oregonian's* photography department took their self-portraits in the *Portland* daily's studio. They are (left to right) Michael Lloyd ('73), Steve Nehl, Dale Swanson, and Craig Scattarella ('81).

China Journal

Continued from page 5

well maintained. Out back, I remembered there was an orchard, but now it is a pippen and dirt. My cousin Maeying introduced herself and I suddenly remembered that she was the one left behind when her parents took off to Taiwan. She showed me her house, which was my playhouse when I was eight. After tea, I walked away from the house and touched the tall wall in front with sadness. Many villagers gathered outside and the old postmaster, a dear neighbor, came out to greet me, too. Many followed us all the way to the "town square" where we parked our car and they gave me their names which should be known to my mother, but with everyone talking it was hard for me to remember any names . . . My day is not over without seeing my mother-side relatives. Twenty of them had come from Nanping by train to our hotel.

August 10 Fuzhou Normal University is an older university in Fujian Province, with a good reputation. The President said that PSU and FNC would soon establish sister university relations and I presented him with PSU catalogs and Portland books. The President presented a scented fan to each of us . . . My two aunts and my uncle came back this evening and we enjoyed an hour of conversation and

exchanged gifts. We had so much to talk about but had so little time.

August 11 Xiamen Most of us went to the "night club," a singing and dancing hall. I was surprised to know that the young audience were mostly local Chinese dressed in western clothes and dancing disco. We were there for about 1½ hours until the cigarette smoke irritated us all.

August 12 We were taken to Jimei Village to see the memorial for Chen Ja-Gan, a local son originally Nationalist but later sympathetic to Mao and supporting the revolution. He made a lot of money through his rubber plantation in southeast Asia and donated a big sum of money to establish schools in Xiamen. I believe the tourist industry wants to bring all visitors to this memorial to show the patriotism of the overseas Chinese and present Chen as an example.

August 13 About 20 students from the foreign language department greeted us at Xiamen University. As they led us for a quick tour of their beautiful campus, they practiced their English conversation on us . . . On the boat ride to Hong Kong, just outside the port of Xiamen, we saw the Nationalist-controlled five offshore islands. I suddenly felt strange. These islands are so close to the mainland yet so far away economically and politically. At night, as we traveled across the South China Sea, we saw many lights on the east side of the boat. Some jokingly said that we were heading to Taiwan. These lights are from the fishing boats. It is a beautiful scene in the dark night.

One day, while Lloyd was shooting in the mayor's office, Clark commented that he felt he could be himself in front of Lloyd's camera. "Man, that was neat," Lloyd grinned. "I really liked that."

These "small victories" — quieter and closer to home than the drama of Ethiopia — are what keep a photojournalist like Mike Lloyd going.

TRAVEL

HALLEY'S COMET

East Caribbean
April 2, 1986

MANY OTHER CRUISES

Mexico, Western Caribbean
Panama Canal

Big discounts by booking early
Limited space

November

MOSCOW/LENINGRAD/HELSINKI

December

CHRISTMAS IN SCANDINAVIA

January

INDIA

March

SPRING BREAK:
MOSCOW/LENINGRAD

April

VIENNA/BUDAPEST

May

RUSSIA AND CENTRAL ASIA

June

RUSSIA BY BUS

July

RICK STEVES' "EUROPE
THROUGH THE BACK DOOR"

September

SPAIN AND PORTUGAL
ISRAEL

October

HIMALAYAN TREK II

Call or write PSU Alumni for complete
details — (503) 229-4948

PSU ALUMNI TOURS

P.O. Box 752
Portland, Oregon 97207

AlumNotes

'72

Continued from page 4

William A. Korach (MST) is currently an administrator in residence, teaching in the Education Administration program at PSU's School of Education while pursuing his doctorate at PSU in the same field. He is on a year's sabbatical leave from Lake Oswego High School, Lake Oswego, Ore., where he is principal. Three years ago, his school was selected as one of the most outstanding in America by the National Commission on Excellence in Education.

George V. Kuykendall (MS) is the 1984-85 president of the Oregon Career and Employment Counselors Association, and past president of the Kiwanis Club of greater Vancouver, Wash.

Carl E. Parker (MS), a counselor at Portland Community College, Portland, Ore., worked with five other volunteer teachers during the summer to help about 30 Portland school children improve their reading and writing skills.

Howard P. "Patrick" Torelle (BS, '74 MA), formerly a theater arts instructor at Umpqua Community College in Roseburg, Ore., has accepted a position to teach acting and stage voice classes at Lane Community College in Eugene, Ore.

Ronald S. Wilson (BS) has recently been named corporate controller of Dorsey Bus Co. in Corvallis, Ore., a school transportation company that has been in business in Oregon since 1909.

'73

Thom M. Armstrong (BS), PSU student body president in 1972-'73, now teaches history and political science at Palo Verde College in Bluffton, Calif. He is currently completing his doctoral dissertation.

Gerry S. Pruyin (BS) won \$10,000 with a spin of the wheel July 27 during a weekly Oregon Lottery drawing. He and nine other finalists were shooting for a \$1.83 million jackpot at the studios of Salem television station KCTH, CH. 22.

Thomas F. Strode (BA) works as the full-time director of music at St. Andrews Episcopal Church in Ann Arbor, Mich.

C. Norman Winnigstad (MBA), founder and chairman of Floating Point Systems, Inc., Beaverton, Ore., has been appointed by Gov. Vic Vaites to the newly created Commission on Technical Education. The group will advise the state Board of Higher Education on programs of the new Oregon Center for Advanced Technology Education (OCATE).

'74

Dennis Derby (BS, '78 MBA) served as chairman of this year's 10th annual Street of Dreams event, sponsored by the Home Builders Association of Metropolitan Portland. Derby, owner and founder of Blazer Homes, Inc. of Tigard, Ore., also showcased his \$200,000 home on the street along with 13 other custom homes.

Dennis C. Kucera (BA) reports he has nearly finished the seven years of research needed to write a three-volume work on the top-scoring lighter plane group operating in the Mediterranean theater during World War Two.

Jay C. Thomas (BS) recently moved back to Portland after a nine-year absence. He now works as an industrial and organizational psychologist in southeast Portland.

Edward J. Washington (BS), a market administrator for Pacific Northwest Bell, has been appointed to the state Advisory Council on Unemployment Compensation. The nine-member council represents the public, management and labor as an advisory group to the administrator of the state Employment Division.

'75

Katherine Babbitt (BA, '83 MPA) assumed office Oct. 14 as the new city clerk and treasurer for The Dalles, Ore. She had been the Wood Village, Ore. city recorder since Aug. 1983. Prior to that, she served as assistant to the parks superintendent in Multnomah County, Ore.

Elizabeth V. "Betsy" Crist (BS, '82 MS) has been selected as a training and development specialist for Clackamas Community College's Department of Continuing Education. She will work in the college's South Clackamas site in Wilsonville, Ore., supervising training programs for Tektronix, Inc. employees in Wilsonville.

Rebecca M. Crockford (BS) was recently promoted to deputy internal audit manager with Georgia-Pacific Corp. in Atlanta, Georgia.

James R. Deibert (BS) is the principal owner of Deibert Seed & Grain Co., Independence, Ore., an agricultural management and marketing company established in 1981.

Elizabeth Bell Dixon (BA) has opened North Mountain Saddletry, located at the Lake Oswego Hunt Club in Lake Oswego, Ore.

Carl A. Foleen (BS) is a material controller for Evergreen Airlines, McMinnville, Ore. The company handles air freight, national and international charters, and recently participated in charitable airlifts to Ethiopia.

'76

Nick D. Fluge (BS) is now a service instructor at the Horst Master Culinary Institute in Portland.

Catherine M. Galbraith (MUS), the planning director in Oregon City, Ore., has been elected president of the Historic Preservation League of Oregon for 1985.

Christopher A. Gossett (BA) is a Portland writer and painter who has authored and printed two limited-edition books: *Rubbings from the Rose City*, a collection of images rubbed from Portland manhole covers, stone carvings, plaques, cornerstones and gravestones, and *Portland Historic Sidewalk Signatures*, a collection of 276 rubbings of builders' names and construction dates as stamped into Portland's sidewalks between 1900 and 1930.

Mary Lou Stoutenburg (BA) is head of the English Department at Five Oaks Intermediate School in Beaverton, Ore.

Michael D. Wagoner (BS) recently was promoted to vice president/corporate finance officer at U.S. Bancorp headquarters in Portland.

'77

Harry G. Edmonds (BS) is engaged in pollution control efforts while working as a senior engineer in industrial waste management for the City of Portland's Bureau of Environmental Services.

Thomas E. Koler (BS) is a project engineer geologist with the U.S. Forest Service, Olympia, Wash., where he works on slope stability, problem soils and environmental impact statements.

Gene D. Mead, M.D. (BS), a gynecologist and obstetrician and the former chief resident in his specialty at the 617-Bed St. Joseph's Hospital, Phoenix, Ariz., has returned to Oregon to open his private practice in St. Helens, near St. Helier's Hospital and Health Center, where he also has accepted a medical staff position.

'78

Dorothy "Dottie" Palmer (BS) has been selected to staff the office of the Sunnyside 205 Association as the group's only full-time, paid staff member. The non-profit corporation promotes the Southeast Portland-area neighborhood of Clackamas-Sunnyside.

Joanne Vrlcák (BS) has started "My Cousin Kate," a gourmet picnic and catering business in Northeast Portland. Her business partner, Sandra Wittkopp, attends PSU. Vrlcák formerly was a community relations assistant at Providence Medical Center, Portland.

'79

Geri Ellen Howard (BA), who writes under the name "Ellen Howard," was presented with the Golden Kite Honor Book for Fiction, 1984 Award during the August national meeting of the Society of Children's Book Writers. The award was for her first children's novel, *Circle of Giving* (Atheneum, 1984). Her second book, *When Daylight Comes*, has just been released.

'80

Margaret Carol Alosi (Ph.D.) has received a two-year fellowship from the National Science Foundation to study proteins which may be involved in resistance to disease. She is an NSF postdoctoral fellow conducting botany research at the University of California at Berkeley.

'81

Jennifer Johnson Beckenstein (BS) lives in New York with her husband, Jay Beckenstein, funder and saxophonist of the popular jazz fusion band known as "Spyro Gyra."

Ray M. Milojevich (MCA) has been appointed to the Oregon Occupational Information Coordinating Committee. He has been a vocational rehabilitation counselor with the State of Oregon Commission for the Blind since 1974.

Beth Weinberg-Gordon (MSW) is a medical and dialysis social worker at Texoma Medical Center in Denison, Texas.

James Edward Wilson (BA), a professional classical guitarist, just completed a 14-week concert tour as a cultural ambassador for the United Nations Educational, Scientific and Cultural Organization (UNESCO). The tour visited 14 countries, giving 30 classical guitar concerts plus workshops in 35 cities. Wilson and his wife and young daughter live in Paris, France.

Keith Woodley (MPA) is the new fire prevention officer for the Beaverton, Ore. Fire Department. He formerly worked for 13 years with the Woodburn Fire District in Woodburn, Ore. He lives in Hubbard, Ore. with his wife and children.

Margaret Jane Hillton Young (MA) has been teaching English as a second language at Kuwait University for the past three years. Young, who has come to appreciate the diversity of Arabic culture, plans to stay in Kuwait indefinitely.

'82

Dan Ivancic (BS), son of former Portland mayor **Francis J. Ivancic** (Vanport), has teamed with Jerry Bishop to form a new political action committee called "Young People for Oregon's Future."

Jane Hult Oheimann (BA) has been elected as the new executive director of the Oregon Tri-City Chamber of Commerce, headquartered in Oregon City, Ore.

Patricia A. Prosser (BS) has been promoted to senior accountant at the Portland office of Price Waterhouse CPAs.

Sister M. Pauline Rose (BS), currently a teacher at St. Mary of the Valley High School in Beaverton, Ore., made her final profession of vows as a Sister of St. Mary of Oregon on Aug. 15.

'83

Hitomi Tamura (MA), who came from Japan to the United States seven years ago, has taught Japanese at West Linn High School, West Linn, Ore., for the past two years. She also teaches Japanese at Bolton Middle School in the West Linn School District.

Continued on page 9

Tour of England and Wales for Junior High School Students

July 1-22, 1986

An opportunity for a lifetime for Junior High School age students! Tour Leader Marilyn Hughes, Talented and Gifted (TAG) Coordinator for Lake Oswego School District, leads this group on an exciting, educational tour of London, Cornwall, Stratford, Exeter, Cardiff and St. David's. Students



will spend 12 nights at homestays and 8 nights in hotels. Strictly supervised. Limited to 11 young people.

Portland to Portland: \$2,223.

Sponsored by Portland State University Alumni and American Heritage Association.

For complete details, call Portland State University Alumni, (503) 229-4948.

PSU ALUMNI TOURS

P.O. Box 752 • Portland, Oregon 97207
(503) 229-4948

All-Star Event caps 40th year recognition week

Picture a green lapel button on every Portland-area resident who has attended classes at PSU. This veritable sea of green will wash over Portland during PSU recognition week next February.

Many such events are planned to demonstrate Portland State's impact on the metropolitan area in the last forty years. It is all part of PSU's year-long celebration of its 40th birthday in 1986.

Since its real beginnings as the Vancouver Extension Center, established in 1946 to serve returning G.I.s, Portland State has built its reputation on accessibility and responsiveness to the community. Now PSU is asking the community to join in celebrating 40 years of steady growth and mounting excellence.

Recognition week will be topped by an "All-Star Event" at PSU on Friday, Feb. 28. All alumni are invited to return to campus for an evening of food, music, dancing and nostalgia. The 40th year celebration in the Smith Center Ballroom will be a great chance to see old friends and classmates, to talk over old times and to make some new plans.

A band of PSU Alumni All-Stars will provide the music, and television



personality Paul Linnman will be Master of Ceremonies. Pre-party functions are currently being planned by alumni groups.

Tickets, at \$15, will be available starting in December, and will include the entire evening of fun plus free parking.

Help Portland State celebrate its fortieth year by setting aside Feb. 28 for the All-Star Event. And help show the community what a force PSU has been through the years by "showing your colors" during recognition week. Watch *Perspective* and the mail for details.

USE PSU LIBRARY
Alumni Benefits Card
229-4948

Annual Fund campaign aims at \$200,000 goal

With some fresh ideas and an enthusiastic crew of volunteers, the PSU Foundation's 1985-86 Annual Fund drive is off and running. This year's goal is an ambitious \$200,000.

Foundation directors, staff and volunteers have designed a three-pronged fund-raising campaign to attract larger gifts to the University. Providing inspiration and strategy for the personal, corporate and telephone solicitation efforts are the members of a newly established Development Committee, chaired by Foundation director Lee Koehn ('73).

Annual Fund chair Kirk Taylor ('71) is carrying on after the \$120,764 success orchestrated by 1984-85 chair Chuck Clemons ('56). Lineea Swanson ('78) is directing the personal solicitation portion of the campaign and John Eccles ('79) is just wrapping up a special two-week volunteer phonathon, which at press-time was expected to exceed its goal of \$55,000 in pledges. The regular student phonathon will begin in January and continue through May.

Corporate solicitation is receiving particular attention this year with the formation of a Corporate Development Cabinet chaired by William Lindblad, a Foundation director and president of Portland

General Electric. The cabinet, composed of key PSU administrators and Foundation representatives, will initiate contacts with Oregon's top 25 corporations to solicit active support of PSU programs.

Rejoining the PSU development staff, with responsibility for corporate, foundation and planned giving, is former Alumni Fund director Karen Martini. Floyd Harmon ('79) continues on as the staff person directly responsible for the Annual Fund.

Private giving is an essential ingredient in the development of quality education programs at Portland State. State funds simply do not go far enough. Alumni are encouraged to be generous in their support of PSU, both as contributors and as volunteers.

Special supplement details 1984-85 gifts

Last year was a record year for private giving to the University. Over \$2.7 million in gifts from Portland State alumni and friends were logged by the PSU Foundation.

PSU's year-end report on annual giving is included as a supplement to this Fall issue of *Perspective*. Take a look at it. Is your name listed there?

AlumNotes

Continued from page 8

'84

Sharon L. Dolan (MS) is a new special education grade school teacher this fall in the Woodland, Wash. school district.

Dianne A. Duke (BS) recently joined the staff at Good Samaritan Hospital & Medical Center, Portland, as an employee/labor relations specialist.

Cary W. Harkaway (MPA) manages a cooperative pre-employment training program for ex-offenders for the state Corrections Division.

Linda Waterman (BS) has been named assistant manager of Interservice Service of America, Inc., a large marketing research data collection house located in the Los Angeles area.

Doug Pitassi (BS) coached 83 young swimmers on the Oregon All-Stars team to a respectable third-place finish among 14 teams from 11 Western states entered in Salt Lake City's Western zone age-group championships during mid-August. His group also won the meet's Spornmanship Award. Pitassi is one of the youngest coaches in the U.S. age-group swimming program.

Merlin Reynolds (MUP) has been named the first executive director of a new group: the Multnomah County Citizen Involvement Committee. Reynolds has worked on a contract basis with the City of Portland Bureau of Planning.

'85

Valerie Stokes Currie (BS) was one of five adult volunteer teachers working this summer to improve the reading and writing skills of about 30 children who have been lagging behind in their Northeast Portland public school careers.

Julie Gray (BS) has been named the new assistant director at Molalla Community School, Molalla, Ore. Last summer, she served as coordinator of recreational programs for the city of Troutdale, Ore.

Cristi Litvin (BS) has been named one of two co-managers of the new Princeton Athletic Club, now nearing completion in downtown Portland's Princeton Building. She also is associate producer of a Roger Cable/stems-aerobics program called "Work It Out," which can be seen locally on Channel 35.

In Memoriam

Alan R. "Rod" Hanson ('71 BS), manager of a Northeast Portland Sawfay store, died Sept. 8 in a local hospital of a cerebral hemorrhage. He was 40. Survivors include his wife, two daughters, a son, his mother and sister. The family suggests that remembrances be contributions to the Sisters of St. Mary of Oregon Educational Fund or Sacred Heart Catholic Church.

Trudi F. Jensen ('81 MBA), a self-employed Portland tax consultant, died of cancer Aug. 17 in a Portland hospital. She was 33. Mrs. Jensen is survived by her husband, a son and daughter, her parents, her sister and brother, and her grandparents. The family suggests remembrances be contributions to the 3A Oncology Nursing Unit Fund, Providence Medical Foundation, 4805 N.E. Glisan St., Portland, Ore. 97213.

10% DISCOUNT

HOLIDAY GIFT BOOKS

Just in time for holiday giving, the PSU Foundation offers you two beautiful coffee table books — at 10% off the publisher's price. Your choice of *Portland: Gateway to the Northwest* and *Architecture Oregon Style*.



Portland: Gateway to the Northwest is a treasured collector's volume. Complimenting the text are hundreds of photographs. Author Carl Abbott, PSU professor, writer and historian skillfully weaves the growth from 640 acres of wilderness to 20th century industrialization. Plus 32 pages of striking color photographs. Publisher's price: \$24.95. **Your price: \$22.45.**

Architecture Oregon Style



Architecture, Oregon Style traces the history of architecture in Oregon, citing 205 buildings between 1840 and the 1950s. From early log shanties to mid-century, the book includes nearly every type of building. Photographs by noted Northwest photographer, Paul Macapiga. Publisher's price: \$29.95 hard cover, \$19.95 soft cover. **Your price: \$26.95 hard cover, \$17.95 soft cover.**

Act now! Limited copies available at 10% off the listed price. Postpaid. Call PSU Foundation for your copies: (503) 229-4911. Charge by VISA or MasterCard.

PSU FOUNDATION

Faculty Notes

John Eliot Allen, Geology, has been writing the weekly "Time Travel" column for the Thursday Science page of *The Oregonian* since Nov. 3, 1983. Photocopied spiral-bound sets of 80 articles plus eight by guest writers are available from Allen for \$10 each, postpaid.

William G. Becker, Chemistry, is co-director of a new program to encourage area high school chemistry teachers to stay current with advances in chemistry education. With the help of new federal funding, Becker and Christina Borgford of the Oregon Episcopal School are designing a three-stage program including symposia by PSU chemistry faculty, an intensive workshop, and follow-up.

Lee Casperon, Electrical Engineering, has received a grant of \$247,866 from the National Science Foundation for a three-year investigation of the spontaneous instability in laser systems. Casperon, an internationally regarded laser researcher, will do his experimentation in PSU's new laser laboratory.

John Darnis, Political Science, has accepted an appointment as a Visiting Professor of Government at Harvard University for the Spring semester and will be on LWOP for Winter and Spring terms. At Harvard, Darnis will teach an undergraduate survey course and a graduate seminar related to his specialty, North African politics and international relations.

Dmitryshyn and Arthur Johnstone, International Trade and Commerce Institute, were in China Sept. 18-30 as part of an official delegation from the City of Portland to the Second International Northern Inter-city Conference in Shenyang.

Chik Erzurumlu, Dean, School of Engineering and Applied Science, was named "Engineer of the Year" by the Oregon Section, American Society of Civil Engineers, for his career-long achievements in the development of engineering programs at PSU and for his contributions to the Society of Civil Engineers.

Faryar Etesami, Mechanical Engineering and Systems Science, has received a two-year grant of nearly \$64,000 from the National Science Foundation to investigate the integration of computerized inspection into the design and manufacture of machine parts.

Alexander Gassaway, Geography, has been awarded a Fulbright Award to study the geographic aspects of the agricultural food marketing system of Finland, North Norway. Gassaway has also been awarded a Norwegian Marshall Fund Award to be used in conjunction with the Fulbright Award.

Bryan Johanson, Music, had his Symphony No. 1 (Opus 47), premiered by the West Coast Chamber Orchestra under conductor Neil DePonte, in a June 26 performance at PSU.

Michael Phillips, Philosophy, is back at PSU after 1½ years as visiting professor at the Univ. of Miami and one year as visiting scholar at the Univ. of California—Berkeley.

Norman Rose, Chemistry, has received a \$50,000 grant from the U.S. Department of Health and Human Services, renewable over a three-year period, to establish a program to enhance the abstract reasoning abilities of educationally disadvantaged students who are pursuing careers in the health professions. About 25 PSU students are involved in the academic enrichment program this fall.

Harold Vatter, Economics, has published *The U.S. Economy in World War II*, Columbia University Press, 1985.



Photo by Cynthia D. Stovell

Sheila Dale as "Lady in Blue" takes a walk through Harlem and comments on the sights, which include streetwalker "Lady in Purple" (Carmelita Emerson), in "for colored girls who have considered suicide when the rainbow is enuf," the Theater Arts department's fall production. The Ntozake Shange "choreopoem," directed by Victoria Parker and choreographed by Benny Bell, continues in Lincoln Hall Auditorium Thurs.-Sat. evenings through Nov. 23. See Calendar for details.

HPE holds open house, tennis demo

A celebrity tennis exhibition will officially put the ball into play on the newly covered rooftop courts of PSU's Health and Physical Education building, Wednesday, Nov. 20. The event is part of an open house and dedication that begins with a ribbon-cutting at 5 p.m.

Facing off at approximately 5:15 p.m. will be local television personality Paul Linnman, former Portland Trailblazer Dave Twardzik, Trailblazer broadcast personality Steve Jones, tennis promoter Brian Parrott and tennis instructor Jim Flynn. The

open house will include displays on HPE programs and laboratory demonstrations of exercise physiology, kinesiotherapy and running/walking analysis.

The HPE building's first remodeling since its completion nearly 20 years ago includes a translucent roof covering four tennis courts and a specially banked, one-eighth mile running track. Alumni may use the all-weather facility, which is lighted for night use, as part of their ABC card privileges.

PSU President invited to Japan to discuss economic development

At the special invitation of the Portland Consulate General of Japan, PSU President Joseph Blumel spent two weeks in Japan strengthening academic and cultural ties between that country and Oregon.

During the early November visit, supported by an individual short-term visitor's grant from the Japan Foundation, Blumel traveled to several university campuses and attended a special conference hosted by Naomasa Kozuma, Executive Director of the Urban Economic Institute of Tokyo and a friend of Portland State since 1980.

At the conference, Japanese university researchers looked at various ways in which they could

work with their counterparts at PSU and other state system institutions on projects which can promote increased economic development and cultural exchange between Japan and Oregon. The emphasis was on academics as a key to improving economic ties.

Blumel also visited the Kumamoto Prefecture, an area of Southern Japan which, like Oregon, is attempting to shift its economy from one based on agriculture, lumber and fishing to one that is more diverse, including the development of high tech industry. Blumel, an economics professor, hopes to adapt some of Japan's regional economic development ideas to Oregon.

Briefly...

University accredited

Portland State's accreditation status was reaffirmed for a ten-year period by the Commission on Colleges of the Northwest Association of Schools and Colleges after its review this summer. The commission also waived the customary five-year progress report required of institutions.

New education degree

PSU's School of Education now offers a doctoral degree in Educational Leadership. This first free-standing education doctorate at PSU replaces the bi- and tri-university doctoral programs previously offered jointly with the University of Oregon and Oregon State.

Journalism founder dies

Wilma Morrison, associate professor emerita of journalism, died in a Portland hospital Sept. 24. She had been ill for some time.

A nationally recognized education writer, Mrs. Morrison left a long career at *The Oregonian* to start a journalism program at Portland State in 1961. At PSU, she taught journalism and advised the *Vanguard* newspaper and the *Viking Yearbook* until her retirement in 1973. Many of Mrs. Morrison's former students hold reporting and editorial positions in newspapers and broadcasting in the northwest and around the country.

GROUP LIFE INSURANCE YOU CAN AFFORD

Now 10% Additional Benefits at No Additional Cost

Here is a valuable supplement to your current life insurance plan — easy, economical. Now, during a limited enrollment period, all PSU Alumni under 60 are eligible to apply and purchase \$10,000 to \$200,000 of term life insurance that may be continued to 75 . . . plus an equal benefit amount from \$10,000 for your spouse and \$5,000 for each of your dependent children. We endorse this program as one of the best group life insurance plans on the market today. Apply now! Call or write for your application.

PSU ALUMNI

P.O. Box 752
Portland, Oregon 97207
(503) 229-4948

Performing Arts

THEATER ARTS

Thursdays, 7 pm; Fri., Sat. 8 pm; \$5 general; \$3.50 students, sr. adults, PSU faculty/staff. (General subscription price, \$12; \$9 subscription for PSU students, faculty, staff & sr. adults.) Call 229-4440. Lincoln Hall Aud.

Nov. 8-23 "For Colored Girls Who Have Considered Suicide/When the Rainbow 4 Enuf" by Ntozake Shange. dir. by Victoria Parker & Benny Bell.

Feb. 14- "As You Like It" by Wm. Shakespeare.

Mar. 1 dir. by Asher Wilson

Apr. 25- "The County Wife" by William

May 10 Wycherly, dir. by William Tate

PSU CHORAL PERFORMANCES

Nov. 29 Pioneer Square Tree Lighting Ceremony.

Dec. 5 Brown Bag Concert, Noon, 75 Lincoln Hall

Dec. 7-8 Excerpts from "Iudas Maccabeus" by Handel, with PSU Chamber Choir & PSU Orchestra. Dec. 7, 8 pm; Dec. 8, 3 pm. Lincoln Hall Aud. \$2.50 general, \$1 students.

Dec. 20 Chamber Choir Christmas Concert, 7:30 pm, Smith Center Ballroom

THE CONTEMPORARY DANCE SEASON

8 pm. \$10 general, \$9 sr. adults, PSU students, faculty, staff. Call 229-4440.

Jan. 31- Bill T. Jones/Arnie Zane & Company, Lincoln Hall Aud.

Feb. 1 Karole Armitage, Lincoln Hall Aud.

Mar. 11 Karole Armitage, Lincoln Hall Aud.

FRIENDS OF CHAMBER MUSIC MINI SERIES

8 pm, Lincoln Hall Aud. \$10 general, \$6 students. Call 229-4440.

Dec. 6 Arden Trio

Mar. 27 Muir String Quartet

PIANO RECITAL SERIES

8 pm, Lincoln Hall Aud. \$10 general, \$8.50 sr. adults, PSU faculty & staff, \$6.50 students. Call 229-4440.

Dec. 2 Sedmara Zakarian

Jan. 15 Jerome Lowenthal

Mar. 18 Anton Kuerti

DANCE PERFORMANCE

Shattuck Studio, Theater room 212, \$6 general, \$3 students. Call 229-4440.

Nov. 15-17 The Company We Keep: all-new choreography by Boryse Neidoux. Nov. 15, 16 at 8 pm; Nov. 17 at 3 pm

CONCERTS

Nov. 24 Fireman Trio, 4 pm, Lincoln Hall Aud. \$7.50 general, \$4 students, sr. adults.

Nov. 27 PSU Symphonic Band, Noon, Lincoln Hall Aud., Free.

Dec. 4 Jazz-Night: Jazz Lab Band, Vocal Jazz Ensemble, 8 pm, Lincoln Hall Aud. \$2.50 general, \$1 students.

Dec. 8 PSU Symphonic Band, 8 pm, Lincoln Hall Aud. \$2.50 general, \$1 students.

Dec. 11 PSU Symphonic Band, Noon, Lincoln Hall Aud., Free.

NEW PLAYS IN PROGRESS SERIES

8 pm, 115 Lincoln Hall. \$4 general, \$2.50 students.

Dec. 3-7 "A Little Justice" by John A. Shields, dir. by Pauline Peater.

DANCE LECTURE DEMO

8 pm, 212 Shattuck Hall, \$3 general, \$2 students.

Dec. 12-14 "Dance of Haiti" by Catherine Euleshin, performed by Pattie Benson & Benny Bell

Lectures

TALKING ABOUT IT HELPS

Noon, 11 Neuberger Hall, Free.

Nov. 14 "PMS: An Update," Patti Brandon, OHSU Nurse Practitioner

Nov. 21 "Coping with Test Anxiety," Ron Ronacher, Ph.D., PSU Counseling & Psych. Services

Dec. 5 "Holiday Blues," Gene Hakanson, psychologist, & PSU Counseling & Psych. Services director

GEOGRAPHY COLLOQUIUM SERIES

3:30 pm, 418 Cranger Hall, Free. Call 229-3916.

Nov. 6 "Orienteering: Outdoor Map Recreation," Jeff Lewis, Oregon Orienteering

Nov. 13 "Geobotanical Aspects of the Siskiyou Mountains," Robert Frenkel, Geography, OSU

Nov. 20 "Riparian Habitat & Protection: The Oregon Experience," Tony East, Oregon Dept. of Fish & Wildlife

FOREIGN LANGUAGE COLLOQUIUM SERIES

1 pm, 462 Neuberger Hall, Free. Call 229-3522.

Nov. 13 "Pre-Columbian America," Earl Rees, PSU Spanish section

Nov. 20 "Haiti" (with slides), Francoise Paheau, PSU French section

Dec. 4 "Documents of Freedom," H.F. Peters, German section

Dec. 11 "Forms of Address and Kinship Terms in China," Charles Liu, Chinese section

IMPACT OF SCIENCE & TECHNOLOGY ON LITERARY IMAGINATION

3 pm, 298 Smith Center (unless otherwise noted), free.

Nov. 13 A.B. Paulson reads his fiction. (294 Smith Center)

Nov. 20 Eliot Benowitz: "Osip Mandelstam & Darwin"

Nov. 27 John Hart: "Strange Loves: Hollywood's Romance with Apocalyptic"

Dec. 11 Christine Thompson: "The Image of the Train in Victorian & Edwardian Fiction"

Visual Arts

LITTMAN GALLERY

Regular gallery hours: 12-4 pm, Mon-Fri., 250 Smith Center, Free.

Thru Sculpture by Tom Morandi

Nov. 12

WHITE GALLERY

Regular gallery hours: 8 am-8 pm, Mon-Fri., 2nd floor south Smith Center, Free.

Thru Photography by Richard Blair

Nov. 12

GALLERY 299

299 Neuberger Hall, Regular gallery hours: 8 am-5 pm, Mon-Fri., Free.

Nov. 18- Alumni Art Series presents painter

Dec. 13 Scott Sonnicksen

Campus Notes

Nov. 28 - Dec. 1 Thanksgiving Holiday. University closed.

Dec. 19 Fall Commencement

Dec. 25 Christmas Holiday. University closed.

Jan. 1 New Year's Holiday. University closed.

Jan. 6 General registration, winter term. Evening classes begin.

Jan. 7 Day classes begin.

Films

ERNST LUBITSCH RETROSPECTIVE

7:30 pm, 75 Lincoln Hall, Free

Nov. 15 "The Shop Around the Corner" (1940) with Margaret Sullivan & James Stewart

Nov. 29 "That Uncertain Feeling" (1941) stars Merle Oberon, Melvyn Douglas, Burgess Meredith

Dec. 6 "To Be or Not to Be" (1942) with Jack Benny, Carole Lombard

MADNESS IN MOVIES SERIES

7:30 pm, 75 Lincoln Hall, Free

Nov. 16 "Images" (1972), dir. by Altman.

Nov. 30 "The Ruling Class," (1972), dir. by Medak.

Dec. 7 "The Wall" (1982), dir. by A. Parker.

Special Events

POETRY

7:30 pm, Smith Center's Nordicland, Free. Call 229-3045.

Nov. 15 Sonia Sanchez

Dec. 6 Local poets

OUTDOOR PROGRAM

Call 229-4465 for details.

Nov. 28- Hart Mountain & Alvord Desert Tour

Dec. 1

Dec. 7-8 Ski Tour to Tilly Jane Cabin, Mt. Hood

Dec. 21- Joshua Tree National Monument in the California high desert

SCANFEST

10-3 pm, 5:30 pm, Smith Center Ballroom. \$1.50 adults, \$1 senior adults, 50¢ children.

Dec. 7 "A Scandinavian Christmas"—sights, sounds & tastes of Scandinavia

Sports

FOOTBALL

6 pm, Civic Stadium, Call 229-4000.

Nov. 23 Cal State-Northridge

VOLLEYBALL

7:30 pm, PSU's Gym. (* Mountain West Conference Game)

Nov. 12 Washington

Nov. 14 Montana State*

Nov. 16 Montana*

Dec. 13-14 NCAA II Championship, 5:30 & 8 pm, PSU's Main Gym. \$6 adults, \$4 PSU students & those high school age & under.

WOMEN'S BASKETBALL

Home games at 7:30 pm in PSU's Gymnasium (unless otherwise indicated). (*Mountain West Conference Game)

Nov. 30 Washington State

Dec. 4 University of Oregon

Dec. 10 Western Oregon

Dec. 11 Cal Poly-Pomona

Dec. 14 Concordia (at Portland's Concordia College)

Dec. 23 Nevada-Reno (at 2:00 pm)

Jan. 4 University of Portland (at U of P's Chiles Center)

Jan. 14 University of Portland

Jan. 24 Idaho State* (at 8:00 pm)

Jan. 25 Weber State*

Feb. 7 University of Montana*

Feb. 8 Montana State*

CAPITOL TIRE SYSTEMS

WHOLESALE / RESALE
TIRE WAREHOUSES

FOR PORTLAND
STATE MEMBERS

PRICE GUARANTEE

You always pay less than the general public at Capitol Tire Systems. In the event that we advertise a tire to the public at less than the group price, you will **save two ways!**

1. You will pay the lowest advertised price at time of purchase.
2. You will receive a \$3.00 per tire rebate by completing a rebate form available at the tire store and mailing it to Capitol Tire Systems.

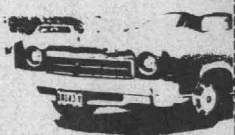
FREE



FREE

SEASONAL TIRE CHANGEOVER

FREE



FREE

*FREE TIRE MOUNTING--To member purchasers (except split rims, all hand mounts and some motor homes)

Quality products manufactured by or through a division of

MICHELIN X **Goodyear** **TA** **MONROE** **Cooper** **CD** **CDGARD** **TRW** **Bendix**

SUPER SAVER RADIALS FOR COMPACTS

40,000 MILE

- Mileage Limited Warranty
- LIFETIME Workmanship
- LIFETIME Road Hazard Limited Warranties at NO EXTRA COST!



FREE TIRE MOUNTING*

SIZE	NON-MEMBER	MEMBER	MEMBER MUD & SNOW
105SR-12	25.81	23.81	23.95
145SR-13	23.72	21.88	21.95
165SR-13	26.15	24.12	24.50
165SR-13	27.54	25.41	25.50
175SR-13	30.29	27.94	27.95
175SR-14	32.33	29.83	29.95
185SR-15	36.23	32.89	32.95

SNOW CHAINS



The Radial Chain by Champion is designed for today's radial tires.

Snow Chains Available as low as **\$21.95**



STEEL BELTED RADIALS

55,000 MILE

- LIFETIME Workmanship
- LIFETIME Road Hazard Limited Warranties at NO EXTRA COST!



FREE TIRE MOUNTING*

SIZE	NON-MEMBER	MEMBER	MUD & SNOW
155SR-12	33.59	31.95	31.50
145SR-13	32.25	30.95	
155SR-13	34.50	32.95	31.95
165SR-13	38.43	36.50	33.95
175SR-13	42.65	40.50	37.95
165SR-14	43.14	41.50	39.50
175SR-14	48.75	46.95	43.50
185SR-14	51.14	48.95	46.95
175-70R-13	40.39	38.50	37.50
185-70R-13	43.74	41.50	39.95
185-70R-14	49.51	47.50	44.50
195-70R-14	53.92	51.50	48.50

BATTERIES

(most cars)
from **\$29.75 ea.**

Studding for snow tires **\$7.49 ea.**

STEEL BELTED RADIALS

55,000 MILE

- Mileage Limited Warranty
- LIFETIME Workmanship
- LIFETIME Road Hazard Limited Warranties at NO EXTRA COST!



FREE TIRE MOUNTING*

SIZE	NON-MEMBER	MEMBER	MUD & SNOW
P155/80R-13	41.69	39.50	
P165/80R-13	42.98	40.95	
P165/80R-13	44.77	42.50	
P185/80R-13	46.56	43.95	44.50
P185/75R-14	48.49	45.95	48.95
P185/75-14	51.09	48.50	49.95
P205/70R-14	53.09	50.50	
205/75R-14	52.97	49.95	50.50
P215/75R-14	54.65	51.95	54.50
P205/75R-15	52.44	52.50	52.95
P215/75R-15	56.34	53.50	54.95
P225/70R-15	59.17	55.95	
P225/75R-15	60.53	57.50	
P235/75R-15	64.23	60.95	57.95
			60.95

FIBERGLASS BIAS BELTED

30,000 MILE

- Mileage Limited Warranty
- LIFETIME Workmanship
- LIFETIME Road Hazard Limited Warranties at NO EXTRA COST!



FREE TIRE MOUNTING*

SIZE	NON-MEMBER	MEMBER	MUD & SNOW	POLY***
P155/80R-13	28.01	25.95	30.50	
P165/80R-13	28.69	26.50	32.50	
P175/80R-13	29.62	27.50	33.95	
P185/75B-14	32.22	29.95	36.50	
P195/75B-14	34.83	31.95	37.50	
P205/75B-14	36.32	33.50	38.50	
P215/75B-14	37.68	34.95	41.50	
P214/75R-15	38.30	35.50	41.95	
P235/75B-15	40.84	37.50	44.95	
P235/75B-15	43.14	39.95	46.95	

***4-Ply Polyester Construction

AVAILABLE AT THESE LOCATIONS:

PORTLAND PORTLAND PORTLAND
2700 SE 82nd Ave Lombard at NE 11th 3365 Southeast 17th Ave
(1 block SE Division between Powell) (503) 285-7311 (503) 233-2431
(503) 774-1978

1520

90 DAY SAME AS CASH. CONTACT STORE FOR DETAILS.

STORE HOURS MON.-FRI.
7:45-6:00 SATURDAY 7:45-5:00

Pictures of tires may not pertain to actual tire line

PRICES SUBJECT TO CHANGE WITHOUT NOTICE

PSU Perspective

P.O. Box 751
Portland, Oregon 97207

ADDRESS CORRECTION
REQUESTED

MOVING?

Send this label (or copy of it)
with your corrections to:
Portland State University
University Relations Services
P.O. Box 751
Portland, OR 97207



Non-Profit Organization
U.S. Postage
PAID
Portland, Oregon
Permit No. 770