

1970

## Viking 1970

Portland State University

Follow this and additional works at: <https://pdxscholar.library.pdx.edu/viking>



Part of the [Higher Education Commons](#), and the [United States History Commons](#)

Let us know how access to this document benefits you.

---

### Recommended Citation

Portland State University, "Viking 1970" (1970). *The Viking (Yearbooks)*. 20.  
<https://pdxscholar.library.pdx.edu/viking/20>

This Book is brought to you for free and open access. It has been accepted for inclusion in The Viking (Yearbooks) by an authorized administrator of PDXScholar. Please contact us if we can make this document more accessible:  
[pdxscholar@pdx.edu](mailto:pdxscholar@pdx.edu).

viking 70





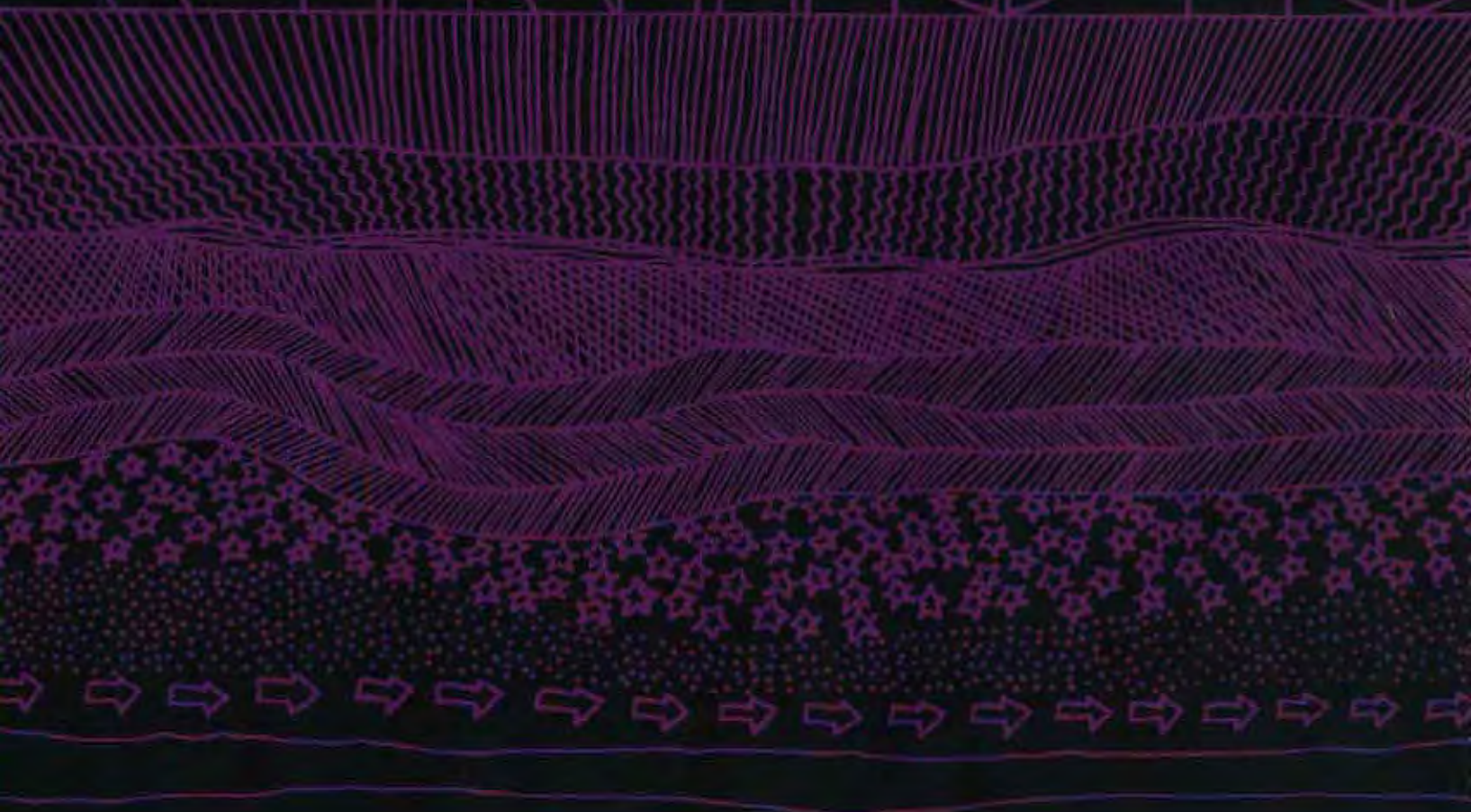








wikiing 70















\$136.00	quarter tuition
25.00	incidental fee
25.50	parking permit
4.25	insurance
1.00	locker
.50	book store co-op
.89	notebook
1.25	<u>The Politics of Experience</u>
1.95	<u>Essay on Liberation</u>
1.95	<u>Deviance and Control</u>
3.95	<u>Black Power and Student Rebellion</u>
7.50	<u>Biological Science</u>
4.95	Laboratory Guide
1.65	<u>Henderson the Rain King</u>
.95	<u>The Horse's Mouth</u>
1.45	<u>The Sibyl</u>
1.25	<u>The Invisible Man</u>
.75	<u>The Spire</u>
2.95	<u>Crime and Punishment</u>
.95	<u>One Flew Over the Cuckoo's Nest</u>
5.25	<u>The Business World</u>
10.00	<u>The Making of a President 1968</u>
6.95	<u>American Politics</u>
.10	coffee
.10	coffee
.10	coffee









*Beginning again takes maybe four hours.  
And costs more. The university promises  
nothing.*

*"U.S. citizens are six per cent of world's  
population consuming sixty per cent of  
world's resources." George says Portland  
State is a galling experience; by winter term  
he's happy.*



*And it is the second time around with a  
university Goals Commission that makes  
heavy paper kites.*

*Just one-third of PSU's fifty-two acres  
has been developed—ten major buildings and  
seven minor buildings accomodating over  
half of the potential student body. If the  
kites fly, there will be a School of Liberal  
Arts, new facilities planning, and an exten-  
sive interchange program between gown and  
town—a little ivy on the walls.*

*Smog is thickest around the university.*



*\*Cage, John: A Year From Monday, 1967.*



goals commission

goals commission













*For awhile it looked like urban renewal meant student removal. Portland Student Services Inc. was instigated in the early summer of '69 to solve the student housing shortage. Two programs, one temporary and another tentative, were thrown open to the university.*

*With the first plan, PSS Inc. saved nine local apartment buildings from demolition for at least two years. It wasn't easy, and operational problems abounded. The leaky roofs, stubborn furnaces, broken windows, faulty wiring, and bad plumbing had to be patched, fixed or replaced.*

*In October three apartments opened. Rent was cheap. By January the remaining six structures were in business. A tenth building was recovered to house the disadvantaged under Portland State's "Operation Plus" program. Over six hundred students found homes. Rooms were valuable.*

# STUDENT HOUSING



*Dear Friend,*

*Montgomery Bldg.*

*My name is Mr. Ahamat. And I live in this room, but I did not move my stuff in yet. Therefore, if they signed you for this room they are mistaken and I already checked with the manager and he wants to see you.*



*At the end of PSS Inc.'s twenty-month lease the buildings will most likely come crumbling down. Legislature permitting, university classrooms will take their place.*

*Plan two then calls for a handful of isolated student housing satellites—student communities within the city linked to the university by a free shuttle bus service.*

*Then also, an application for a federal grant to build one hundred and fifty units of student housing close by is in the bureaucratic mill. If approved by HUD, students may sit close enough to campus to do without buses. But right now, plan two is a heavy paper kite.*



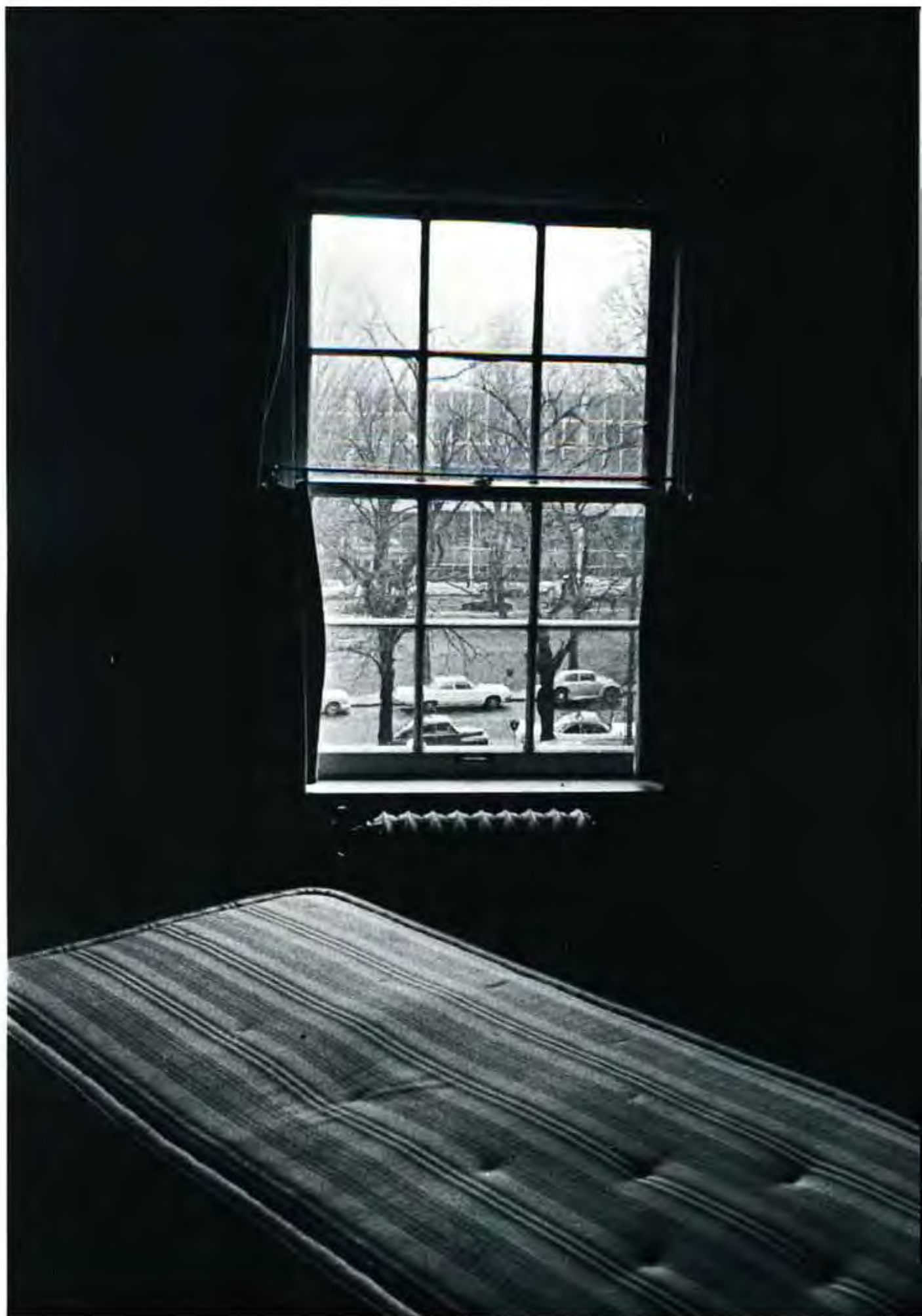




















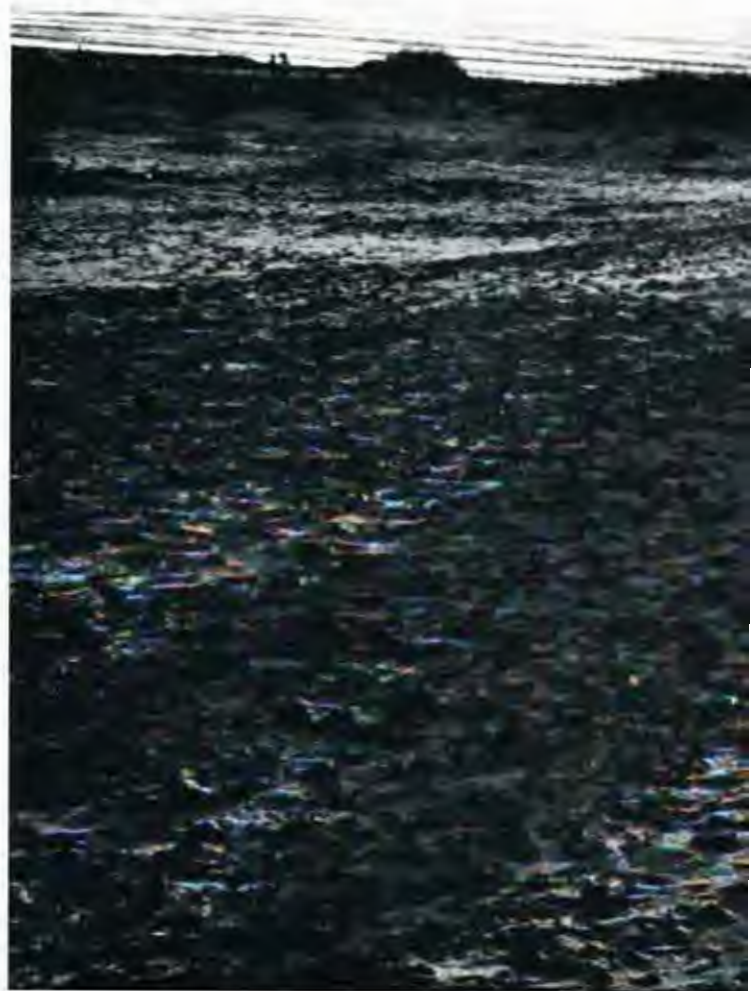


*As part of an urban university, the school of business administration sits in the center of its laboratory. And its laboratory, once in an economic nutshell, is now a large place of ecological-sociological crisis.*

*Gathered on the sands at Gearhart for the PSU Marketing Association's annual weekend conference, executives, faculty members, and students discussed the relevance of a university education. Some acted.*

*A program was directed to help hard-core unemployables report to their jobs regularly. Research was initiated into discriminate food pricing practices and discriminate credit charges.*

*Yet the ecologists, and their Earth Day marchers under Environment's first banners, set the all but impossible challenge for a socially concerned school of business. As the cry came through for more social responsibility, the text books were being rewritten.*













*Attendance*

<i>First</i> .....	6500
<i>Second</i> ...	7499
<i>Third</i> .....	6401
<i>Fourth</i> .....	1035
<i>Fifth</i> .....	3100
<i>Sixth</i> .....	13814
<i>Seventh</i> ...	5652
<i>Eighth</i> ....	4500
<i>Ninth</i> .....	3399
<i>Tenth</i> .....	6000

<i>PSU 22</i> .....	<i>Montana State</i>	6
<i>PSU 26</i> .....	<i>Linfield</i>	21
<i>PSU 35</i> .....	<i>East Washington</i>	0
<i>PSU 35</i> .....	<i>British Columbia</i>	3
<i>PSU 28</i> .....	<i>Washington</i>	16
<i>Montana 49</i> .....	<i>PSU</i>	14
<i>Idaho State 46</i> .....	<i>PSU</i>	23
<i>Puget Sound 44</i> .....	<i>PSU</i>	34
<i>PSU 54</i> .....	<i>S. Oregon</i>	7
<i>Fresno State 28</i> .....	<i>PSU</i>	22























---

MORATORIUM



*Moratorium I was a success by sheer numbers. Over 7,000 peaceful people marched against war.*

*Said President Gregory Wolfe, "It is my hope that members of the PSU community will participate in the events and help demonstrate the concern our academic community has for peace, social justice and fulfillment of man's continuing search for freedom."*

*Wolfe did not close classes for Moratorium Day.*

*Moratorium II was smaller in size and strategy. The Vietnam Moratorium Committee chose to replace one huge march through the city with small demonstrations aimed at selected institutions.*

*Students for a Democratic Society blocked Marines recruiting on campus. There were protestors at the Selective Service Induction Center, and three thousand demonstrators outside Portland's Pioneer Post Office.*

*City Council refused to lower town flags to half-mast.*

*Moratorium III was further fragmented. For a "Day Against Repression" small groups confronted such establishments as The Oregonian, Public Welfare Office, and City Police Station.*

*A "Festive Moratorium" peace parade went to town.*















*"Juex", a play of the absurd by Penny Allen, French instructor, was Les Planches Du Pacifique's November performance at the Agora Coffee House. The play followed one dramatic situation through three possible conclusions. The changing circumstances drew on the styles of behavior potential in each character—ergo, us.*

*Peter Fornara, senior, founded and directed the city's newest theater group, Ars Politica which staged "Julius Caesar", a classic power play which pessimistically depicts revolutionists and revolutionary tenets.*

*The PSU Players adapted Cole Porter's "Kiss Me Kate", a modern musical take-off on Shakespeare's "Taming of the Shrew". The play boasted a new music director, Norman Leyden, assistant professor of music.*























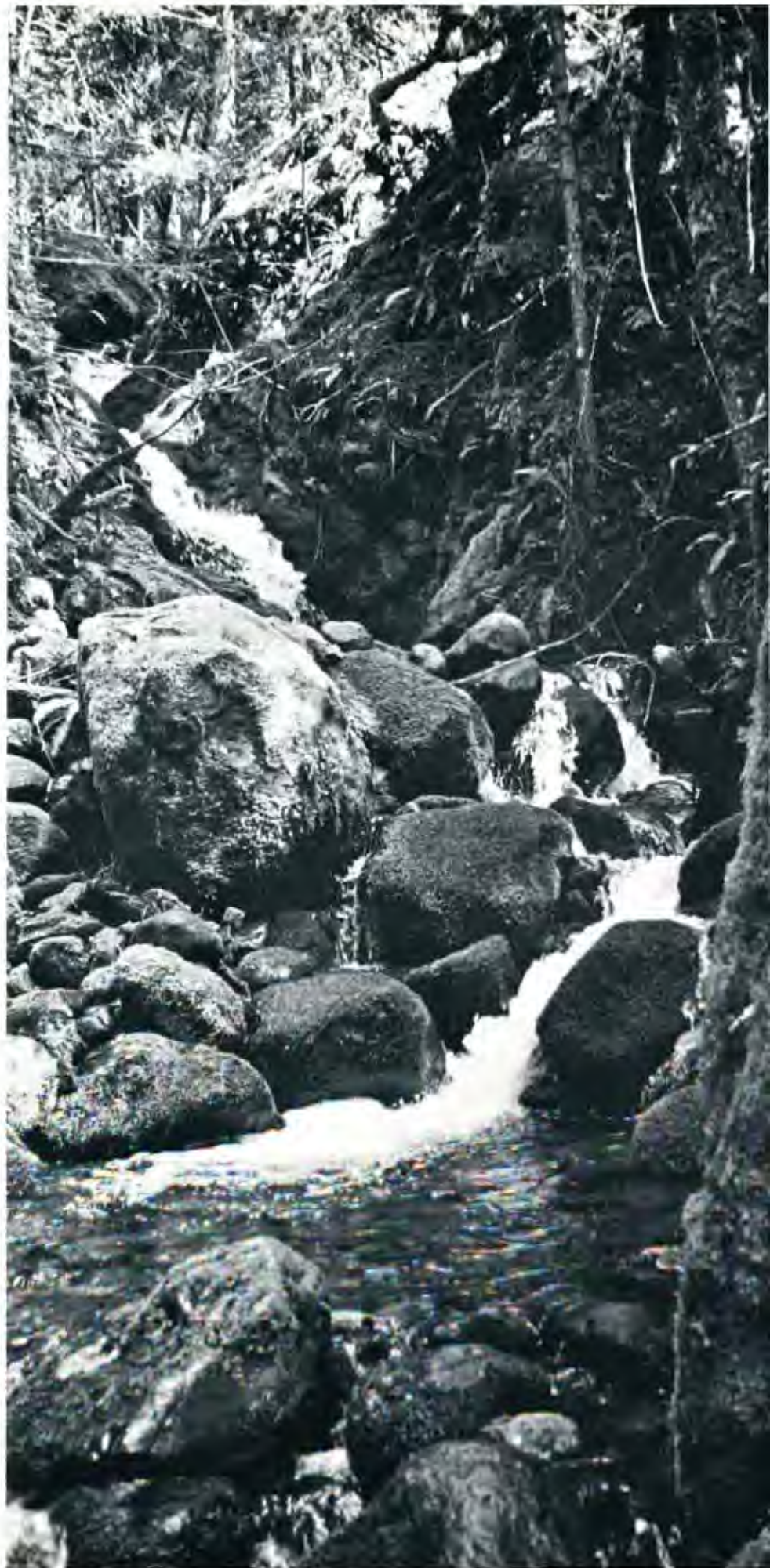














# french pete



*French Pete is a creek ten miles long, laid in virgin forest. It is Oregon's only unlogged lowland wilderness area. It is one of three unaltered drainages.*

*With autumn, the U.S. Forest Service prepared to open French Pete for timber sales.*

*Students joined conservationists. Together they demonstrated at the University of Oregon and French Pete, and delivered an anti-sales petition at Portland's Forest Service Building. Sales were temporarily delayed.*









*President and Mrs. Wolfe moved two parties from Smith Memorial Center to the Portland Art Museum.*

*"I have never seen an obscene painting. I don't think they exist," explained Henk Pander, a Dutch artist turned local, and December's White Gallery showman. Many gallery visitors thought otherwise.*

*Complaints about the exhibit prompted an Art Committee meeting just three days after the twenty-five oils, watercolors, and drawings were hung. The committee passed favorably on the show.*

























***environnement***

***environnement***

***environnement***

***environnement***

***environnement***





*Crunching in the gutter. The leaves go their way and so do you. The sun on your hair, your wool collar scratching your neck makes you want to take a look at someone else. You're tired of too many mornings of coffee and a donut in the cafeteria all by yourself. You start looking for someone, no-one in particular, a face you like maybe, or the hair on someone's arm.*

*What you smell or feel tells you you're in love. It's an old feeling like a story you read in your English book in the seventh grade.*

*And there is something nice about it. They like the eclairs you bought at the bakery where the farmer's market used to be. And they like the old dog you had since you were twelve. Pretty soon you're buying them a Christmas present. Nothing showy. Something that means a lot to you; an old book from a used book store.*

*So you move in together so you can share your lives. Maybe you will. You hope so. You both get drunk one night and tell each other how upset you were about your parents sleeping together, or how they didn't sleep together.*

*The next morning you realize you smoked too many cigarettes and you don't feel good. You have your first fight. You make up, and all day in classes you want to take your clothes off.*

*Later you stop eating breakfast together. You start thinking about the paper you have to write and you feel guilty. One day you realize you're just not making it anymore. You take a long walk down the Park Blocks.*

*Life goes on, brah. The construction/destruction racket continues. The weather is not exceptional. Annual enrollment is up nine per cent, then frozen. Just 11,365 students and no more will be admitted to PSU come fall.*

*Real education, claims Buckminster Fuller, will be something to which individuals will discipline themselves spontaneously under the stimulus of their own chromosomal pattern. Nobody really dropped out.*

*Still, football has never had such a following. Approximately 13,814 fans wailed as PSU broke stride on its sixth game and lost to Montana University, 49-14. Five months earlier, Andrew Haynes, one-term ASPSU president, had threatened to abolish university financed football. Quickly Haynes' support faded as the scores climbed.*

*Such were the breaks. Five wins and five losses. Larry Sellers, sports information officer, said football may yet pay its way.*

*Judy wanted to pay her debts while she could still get a job. She dropped classes to work full-time. Eggs jumped to 73 cents a dozen. Unemployment was on the rise while industrial production and stock prices declined. The GNP recorded its smallest advance at year's end. Yet few officials mentioned a recession. And Richard Nixon, the misplaced optimist, forecasted a national budget in the black.*

*There was Spiro Agnew. The spokesman of the self-styled silent majority charged that the news media was biased, that war critics were effete snobs, that desegregation and the legalization of pornography violated the rights of communities. His colleague on the right, the attorney general's wife, Martha Mitchell lent her clouded remarks to further charge the climate of dissension and polarization. But then marijuana gave Martha a headache and hives.*

*The trial of eight alleged leaders of the demonstration at the Democratic Convention in Chicago was echoed softly at PSU when five students were placed on academic probation for their participation in a Naval recruiting demonstration. Robert Low, university vice president and chief trouble shooter, carried on an extended if abstract dialogue with students that culminated finally in a cloud of smoke and silver bullets. Things being symbolic.*



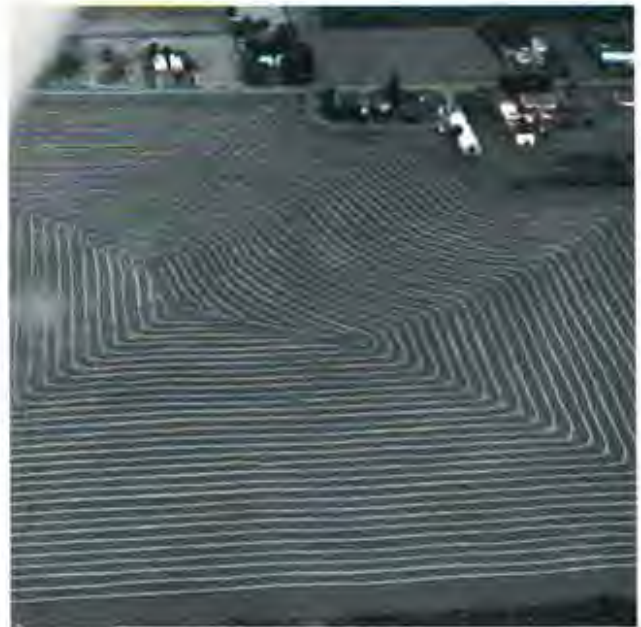












*Airborne over Mt. Rainier, they studied a new break, a vertical surge, in a glacier 10,000 to 1,000,000 years old. To the educated eye that break indicated a hot spot, possible volcanic action brewing in a vaulted monument.*

*Where the Columbia flowed across eastern Washington some 1,500 years ago there was a trough pitted with dry falls and broken plunge basins. West, on San Juan Island was a 100 year old line quarry, depleted, but once a source in the reconstruction of San Francisco.*

*So they scouted the Pacific Northwest-PSU students in a Cessna Super Skymaster classroom. Aerial geography 407 was part of a two-year research program granted by the National Science Foundation to David Smith, assistant professor of geography and class pilot.*

*It was the only class of its kind. And if proven effective as a teaching platform, out of it may come the adoption of aerial courses at institutions throughout the country.*











*For Godard, "Cinema is truth twenty-four times a second." But at PSU the Center for the Moving Image is attempting to integrate its own truths with unfolding discoveries in the university. And it is growing in competence.*

*Splitting with instructional television services, CMI dedicated itself to a comprehensive film program this year. The program, directed by Andries Deinum and Tom Taylor, took student film buffs into the streets.*

*A case in point was Jack Sanders who shot over 2000 feet of film while trailing a sewer maintenance supervisor. The resulting short subject about a middle-aged city employee, his work and associations, was accredited by the anthropology department as well as by CMI.*













0 1 2 3 4 5 6  
PARKING  
EXPIRES 11:00 AM  
NO REFUND

0 1 2 3 4 5 6  
PARKING  
EXPIRES 11:00 AM  
NO REFUND

6  
HOURS

NICKEL - 1 HR.  
DIME - 2 HR.  
QUARTER - 4 HR.

8 AM - 6 PM

PREVENT THEFT  
REMOVE KEYS  
100%

PARKING





SIX HOUR TIME LIMIT

TIME

5 10 25

SIX HOUR TIME LIMIT

TIME

5 10 25

THIS CAR INSERT COIN. TURN HANDLE AS FAR AS POSSIBLE AFTER EACH COIN. REGULATED PARKING DURING HOURS SHOWN ON METERS. DUNCON MANUFACTURED BY DUNCON METER CO. INC. MADE IN U.S.A.

INSERT COIN. TURN HANDLE TO RIGHT AS FAR AS POSSIBLE AFTER EACH COIN. SINGAN V. I.P. METER METER NO. 1000

AT PSTU

PREVENT THEFT REMOVE METERS



















*The sixth floor of Science 1 is an earth household – a plantlife workshop kept by students.*

*When aphids infested the plants this year an application of DDT was considered. But Richard Null, graduate student, proposed nature's medicine, a dose of the predator. One pound of ladybugs was shipped from Nevada. In short sequence, the ladybugs ate the aphid population into balance. "It all worked quite well," recalled one attendant.*

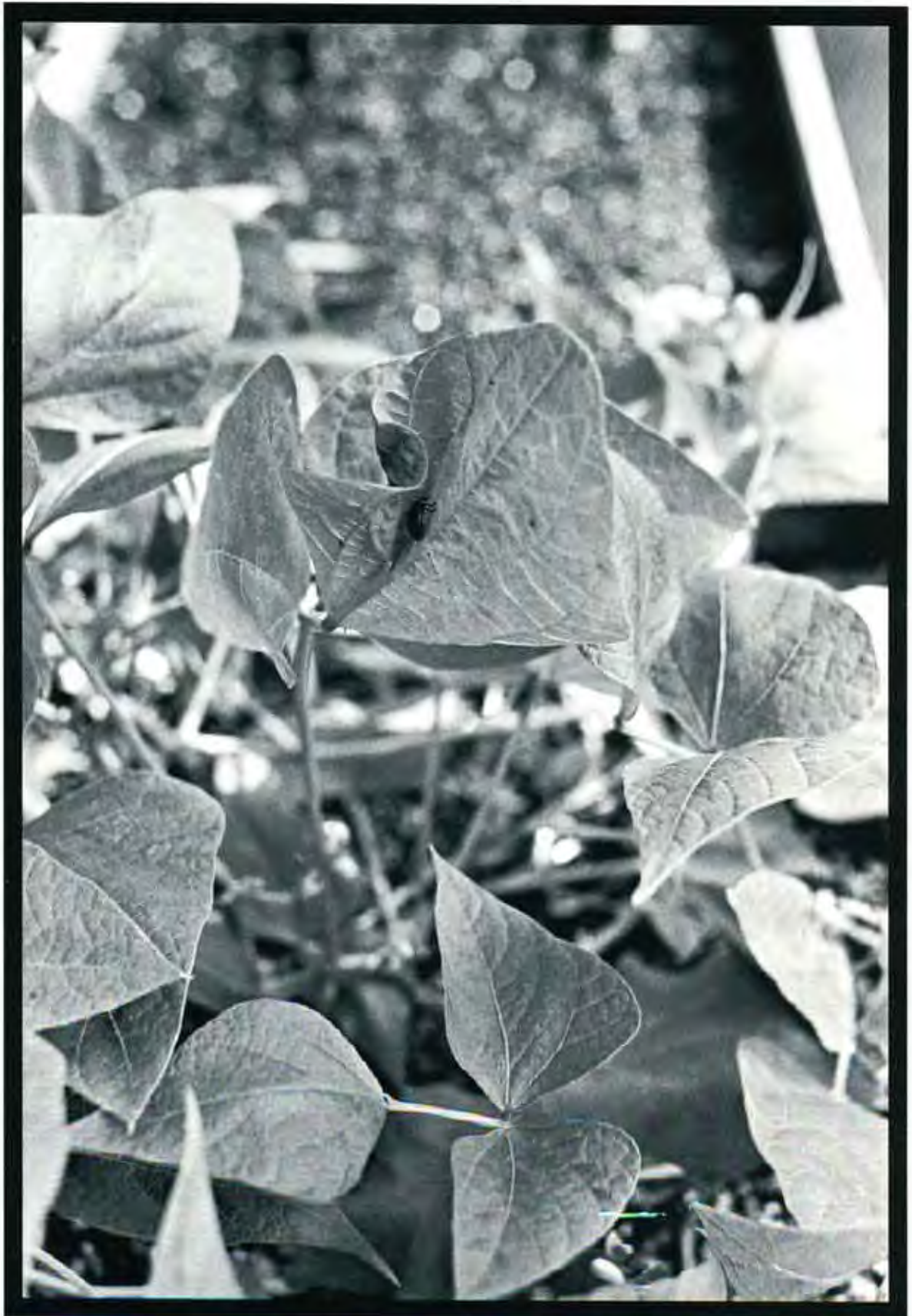
*Now a portion of the ladybugs are in refrigerated storage, while others continue to garden the organically-pure workshop.*























*After a Woodstock summer... jeeeeeeesus. Under black velours, moving into the music as if you live there, pulsin', wigglin', jerkin', vibratin', floppin' far out hair... Up on game legs you barely get started before the strobe's on-and-off-and-on-and-on. Your body, the show... Last notes of some City Zoo favorite fading and here comes the next set. Sweet-icy bra-less girls in this wonderful ballroom. Dance to that. Four hours. And a few months til summer.*

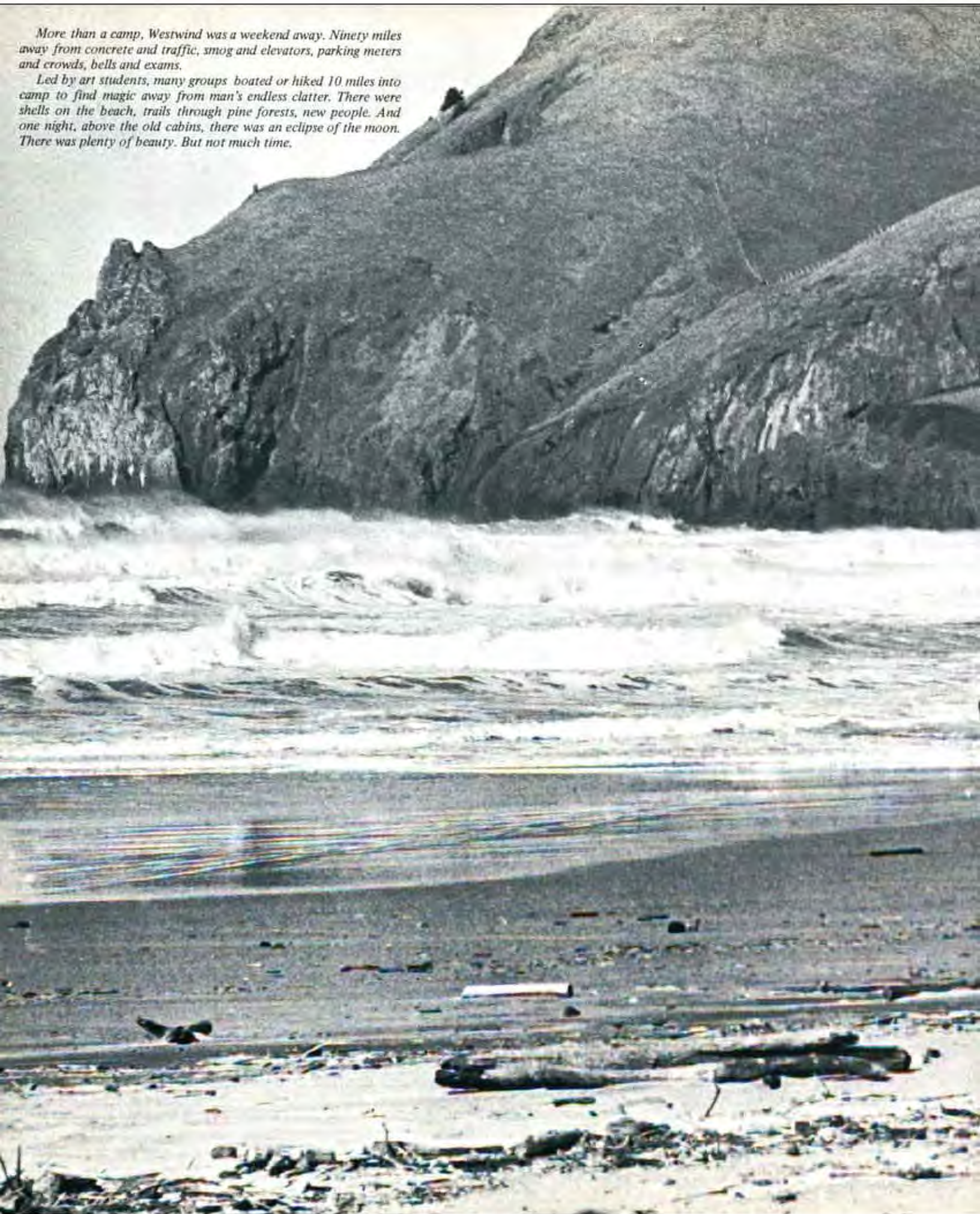






*More than a camp, Westwind was a weekend away. Ninety miles away from concrete and traffic, smog and elevators, parking meters and crowds, bells and exams.*

*Led by art students, many groups boated or hiked 10 miles into camp to find magic away from man's endless clatter. There were shells on the beach, trails through pine forests, new people. And one night, above the old cabins, there was an eclipse of the moon. There was plenty of beauty. But not much time.*









## PORTLAND STATE

Scott McInire  
Ceil Porter  
Lee Perron







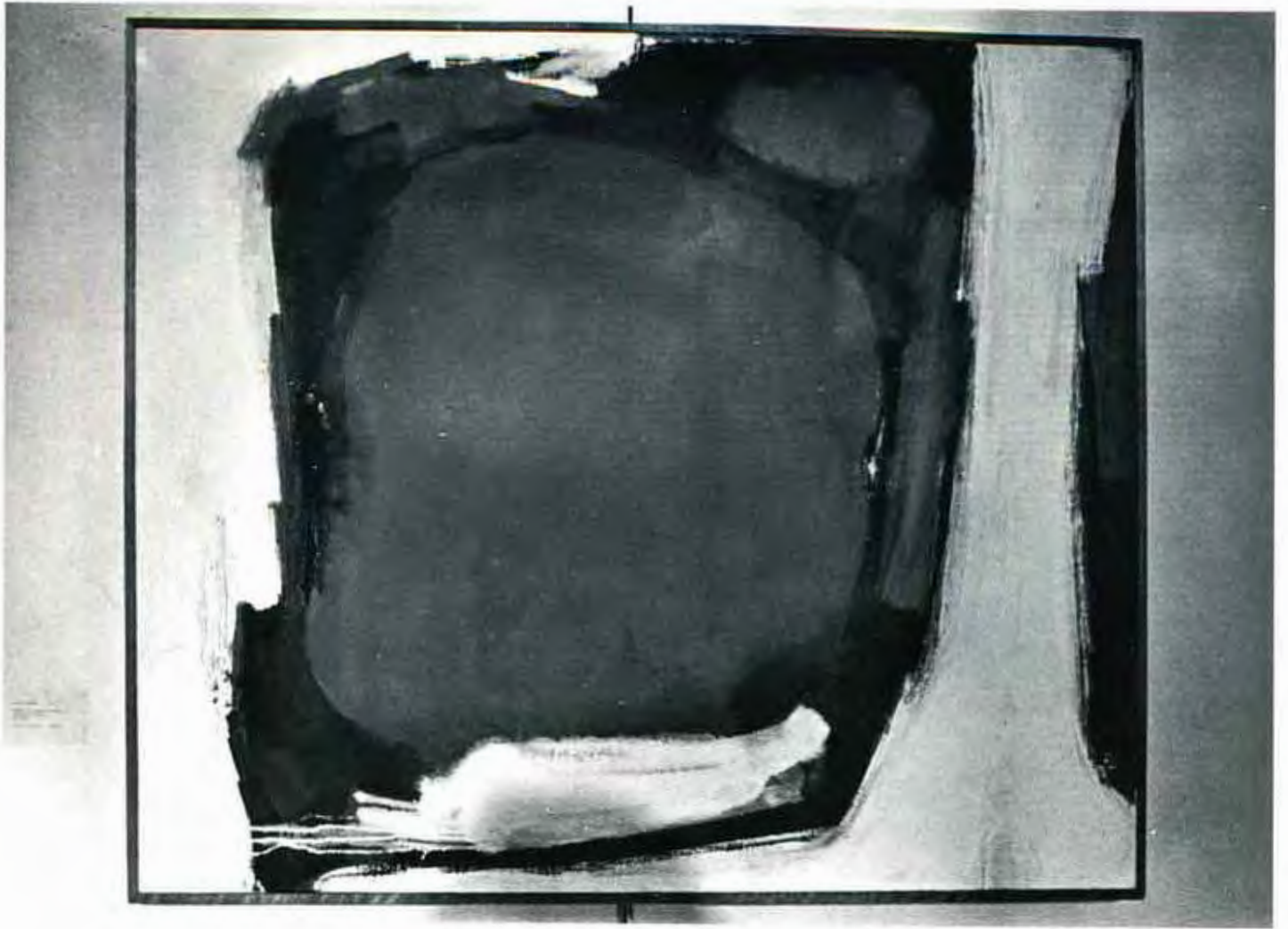


PSU & MUSEUM ART SCHOOL  
JURIED STUDENT  
ART SHOW













**BASKETBALL**

<i>Seattle U.</i> 101	.....	PSU	81
<i>Hawaii</i> 82	.....	PSU	79
<i>Hawaii</i> 94	.....	PSU	79
<i>Idaho</i> 98	.....	PSU	86
<i>PSU</i> 107	.....	S. Utah	93
<i>PSU</i> 102	.....	Cal State	91
<i>PSU</i> 83	.....	Alaska	80
<i>PSU</i> 121	.....	Alaska	81
<i>C. Washington</i> 70	.....	PSU	69
<i>PSU</i> 111	.....	British Colum.	88
<i>PSU</i> 78	.....	British Colum.	76
<i>Seattle Pacific</i> 81	.....	PSU	64
<i>Puget Sound</i> 96	.....	PSU	71
<i>PSU</i> 79	.....	Simon Fraser	76
<i>Linfield</i> 88	.....	PSU	81
<i>Gonzaga</i> 83	.....	PSU	59
<i>Montana</i> 107	.....	PSU	97
<i>PSU</i> 79	.....	Humboldt St.	73
<i>PSU</i> 103	.....	Idaho State	91
<i>PSU</i> 97	.....	Parsons	82
<i>Simon Fraser</i> 102	.....	PSU	74
<i>W. Washington</i> 83	.....	PSU	68
<i>PSU</i> 118	.....	St. Martin's	91
<i>PSU</i> 72	.....	W. Washington	71
<i>Puget Sound</i> 102	.....	PSU	83
<i>C. Washington</i> 80	.....	PSU	67
<i>Seattle Pacific</i> 85	.....	PSU	78















**WRESTLING**

PSU 30 .....	San Francisco St.	5
PSU 33 .....	Central Washington	3
PSU 25 .....	Washington State	9
PSU 22 .....	Oregon	12
PSU 25 .....	Seattle Pacific	9
Washington 19 .....	PSU	14
PSU 26 .....	Central Washington	6
Oregon State 21 .....	PSU	13
PSU 20 .....	Cal Poly	12
PSU 32 .....	Fresno State	5
PSU 15 .....	Washington	15
PSU 24 .....	Oregon	11
PSU 25 .....	Chico State	9
Oregon State 21 .....	PSU	15
PSU 23 .....	Wyoming	9
PSU 21 .....	Utah	11
PSU 17 .....	Brigham Young	15





















*The drug in the rat is marijuana, an old corn remedy and lockjaw treatment, now an outlawed psychedelic. In Cramer Hall's new yet only partially equipped psychology labs officially sanctioned research on the controversial drug is in progress.*

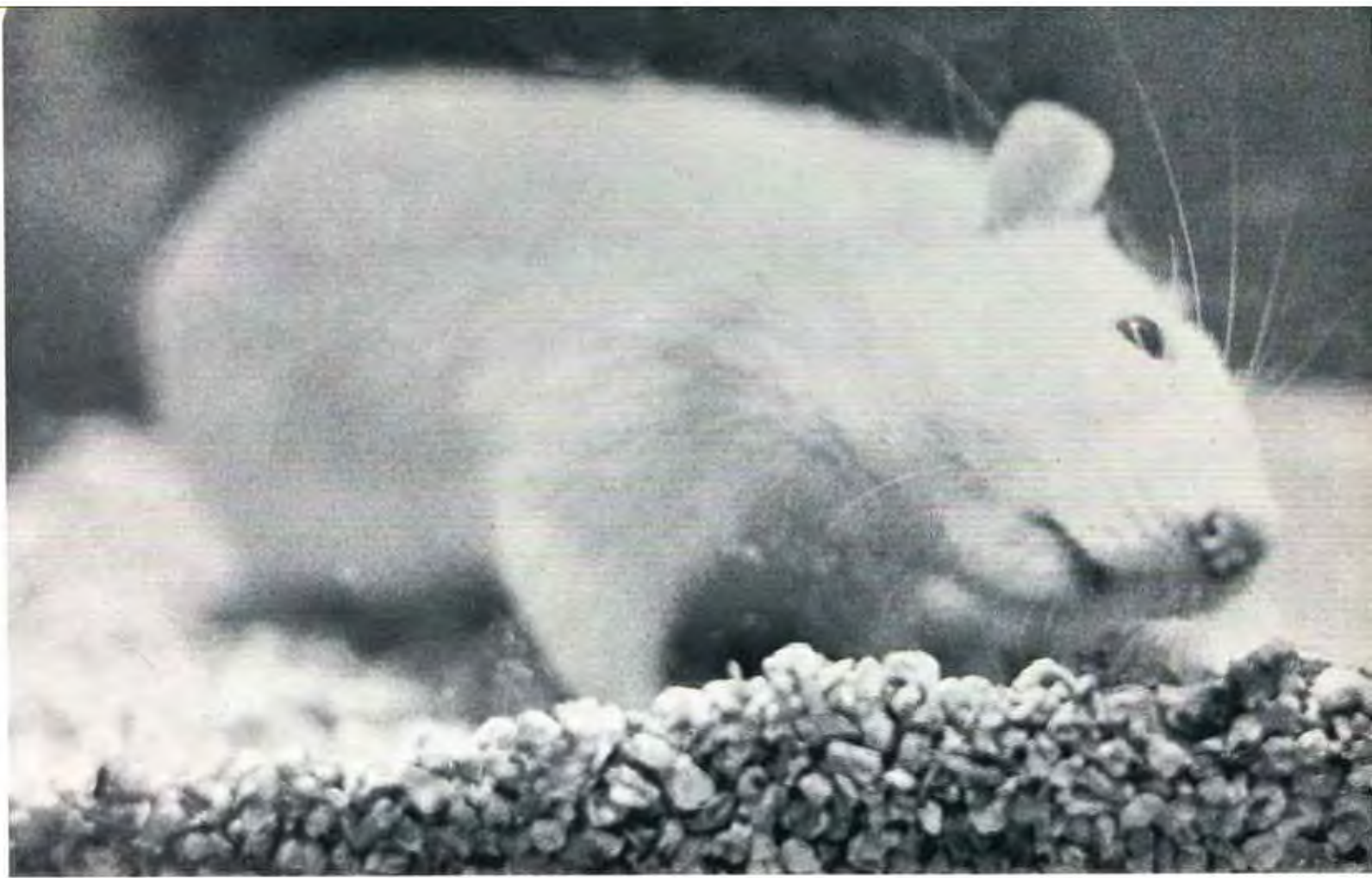
*The psychology department sponsors the project handled by Cord Sengstake, associate professor, two graduates, and three undergraduates. The six have devised a series of tests to measure the effects of hemp on the central nervous system of rats, cats, and later, men.*

*Already completed is one experiment on the eating behavior of rats. Changes in general activity are presently watched. One constant so far, under marijuana, activity generally decreases. Lab facilities permitting, there's three to five years of research ahead.*











*"Anchors away, my friends," sang anti-recruitment demonstrators as Navy information officers set up shop in room 292, Smith Memorial Center. For one tense February week the campus jittered in conflict.*

*Monday afternoon, demonstrators pushed two recruiters out of the center. The officers were escorted ring-around-the-rosey through the Park Blocks.*

*Tuesday, the two recruiters attempted business in a security-sheltered Placement Office in Old Main. There were no customers. But there were about sixty demonstrators waded in the pillared foyer outside the office.*

*Wednesday, the Navy did not return to campus.*

*Thursday, the Marines came. Outside room 292, a divided crowd of pro-recruiters and anti-recruiters drew newsmen and photographers as they debated, chanted, and passed threats.*

*Marine Captain Jud Blakely addressed student questions. Though defending his position, Blakely added "I have no answers . . . We're going to have to do better in the next couple of generations."*

*Vice president Robert Low read a court order restraining sixteen demonstrators. ASPSU members asked the U.S. District Court and State Circuit Court for injunctions against recruiters at PSU. Their request was denied.*

*By midday the crowds were small as recruiters worked.*

*Friday, interest swung to the fifteen students and one assistant professor named in the administration's injunction. Demonstrators gathered at Wolfe's office. They asked the president for a halt to military recruiting on campus. They asked the recruiting order be rescinded. Their requests were denied.*

*A student-faculty poll on PSU's recruiting policy, taken in March, showed the university's majority favored an open campus. Naval recruiters returned in April.*































*"Campus, Corporation, Quality of Life", a national symposium on world economic and social development, opened ecology's big brief season at PSU.*

*It was a six-day conference in early March with 100 students and 50 businessmen joined as delegates in composing domestic resolutions for the United Nations and the Nixon Administration.*

*National speakers offered their solutions to student audiences. Speakers included: John Hessel, Stanford ecologist; Glen Olds, U.S. ambassador to the UN; James Grant, chairman of the Overseas Development Council; James O'Conner, San Jose State economist; and Governor Tom McCall. Solutions varied from McCall's five cent bounty on empty beer cans to Hessel's two child limit for families.*

*The symposium, sponsored by the Council on International Relations and United Nations Affairs, sought to close the "gap" between students and corporations. Last day's vote on resolutions indicated cooperation, if little else, was plentiful.*





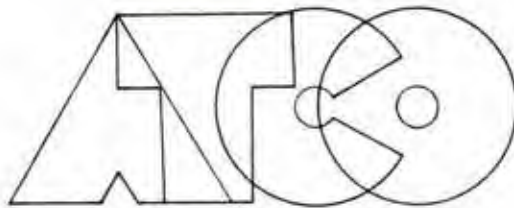
# *Symposium*











**1**

**Saint Joan**

by George Bernard Shaw  
March 6 through March 22

**2**

**The Balcony**

by Jean Genet  
March 27 through April 12

**3**

**Little Murders**

by Jules Feiffer  
April 17 through May 3

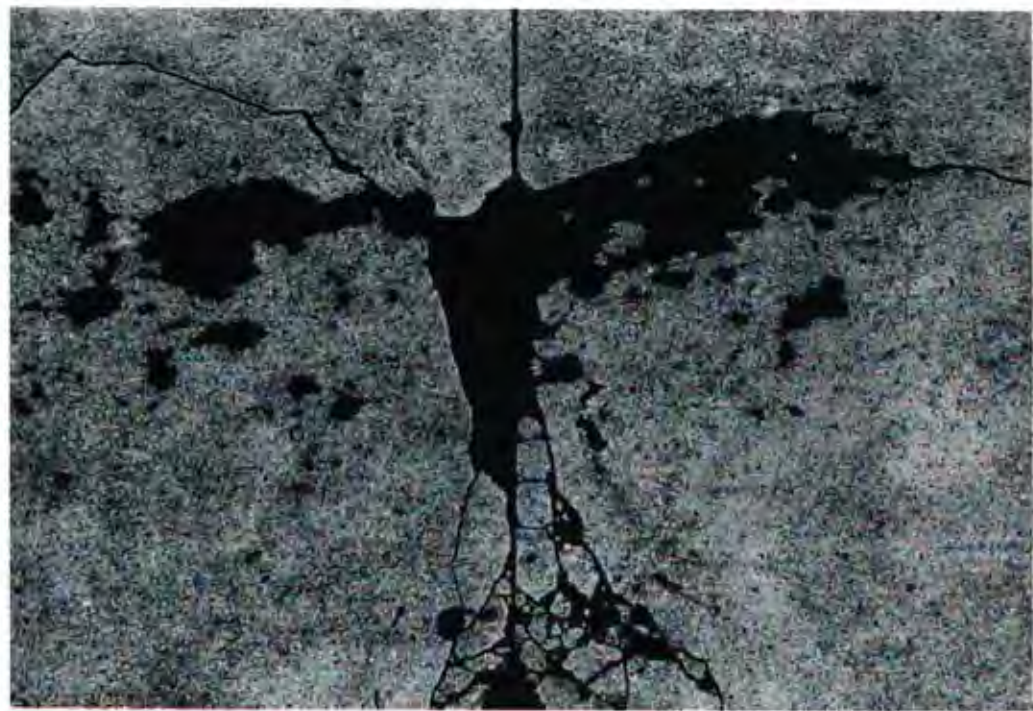
**4**

**The Cherry Orchard**

by Anton Chekhov  
May 8 through May 24









*Spring Song*

*I walk in my garden  
you call the world.  
Around me life is stirring  
to meet and beget life.  
Life is loving,  
Hand in hand with hope  
I walk under new leaves  
Beside a stream that sings  
its' silence in my mind.  
Death is life in my garden  
mortality becomes eternity  
I know what you call love  
has no place here.  
My love is life  
and I beget each day  
to know what life means:  
It is time for you  
to make a garden.  
It is time to stop hating  
and begin to live.*

NOTE TO THE INSTITUTION (from Dick Bakken)

*Reason for resignation or termination  
and remarks of value for the record of this resignation  
for use in preparing summarized information.*

\*To fill my days wandering and scribbling poetry. \*Because—good luck—I hear Basho, Blake, Thoreau, Whitman . . . and so stumble out to greet them. \*Because this indoor light dulls my vision: no Professor has yet startled lightning from a desk. \*Because each judgment I ink on a paper—even A—makes me creep. \*Because each pay hike and new rank makes me smaller. \*Because this junk-factory loves grade, rank, status, prestige, reputation, image, cosmetics, manners, money, and property more than it can ever love people, learning, and Truth. \*Because the whole carnivorous MACHINE is strapped together from here to Vietnam: O Crazy Horse and Ho Chi Minh, these slick elevators oiled up with blood! \*My heart floods with creation and the creatures of Creation: one living buffalo, one living Yellow farmer breathes more than all the steel and paper in all Amerika's universities, cultural halls, and battleships. \*It's time now to turn the page.













# the vanguard

**JOE BERNT**  
Editor

**PEGGY O'PHELAN**  
Business Manager

Stephen Nicholls	News Editor
Don McManman, Dan Wilson,	
Don Wilson, Paul Biehl	Associate Editors
Dean Smith	City Editor
Doug Babb, Bev Walton	Feature Editors
Gary Fouts	Entertainment Editor
Maurie Hall	Sports Editor
Jim Day, Stan Pusieski	Copy Editors
Bob Meyer	Storm Sage
George Stevens	Review and Calendar Editor
Craig Hickman	Shaft Editor
Sandy Frazier	Photo Editor

The Vanguard is published each Tuesday and Friday of the academic year except during final exams and vacation weeks by the Publications Board of Portland State University, P. O. Box 751, 97207, Portland, Oregon—James Hart, chairman; Jerry Penk, executive secretary. Views expressed are those of the writers and do not necessarily reflect the views of the student body, the faculty or the university administration.







---

# Presidents

*The political machine faltered on. Student government gained four presidents, lost three, and had no elections.*

*In early September, ASPSU president Andy Haynes announced that for lack of caliber support his proposed student strike was off. He entered Syracuse University and mailed home his resignation.*

*Vice-president Don Kneass held office during the interim. He appointed Brad Skinner vice-president, then resigned mumbly. "If I had to do it over again, I wouldn't have run."*

*Brad Skinner, student senate's choice, proceeded Kneass. Two months after his appointment, Skinner resigned to chairman a national domestic symposium at PSU.*

*John Wemecken followed and stuck. In May, after five months of a more or less stable government, a major piece of legislation, the first ASPSU constitution since the Uris administration, was approved.*

*The new constitution allowed any student with a petition signed by 30 or more students to become a senator. (Power to the people?)*





*John Werneken*



*Brad Skinner*



*Don Kneass*



*Andy Haynes*

# White Gallery

*With eight exhibits at the White Gallery this year came everything from medical illustrations to a photographic essay on strike events taken by students. Most curious, among the shows, were the steel paintings by Pat Barker, a gunsmith from Klamath Falls. His bullet-ridden works appeared both a comment on Vietnam (one shattered female, entitled Miss. My Lai) and modern technology. The artist refused to comment on the show.*















*Most revolutions in society have not power to interest,  
still less alarm us; but tell me that our rivers are drying up, or the genus  
pine dying out in the country, and I might attend.*

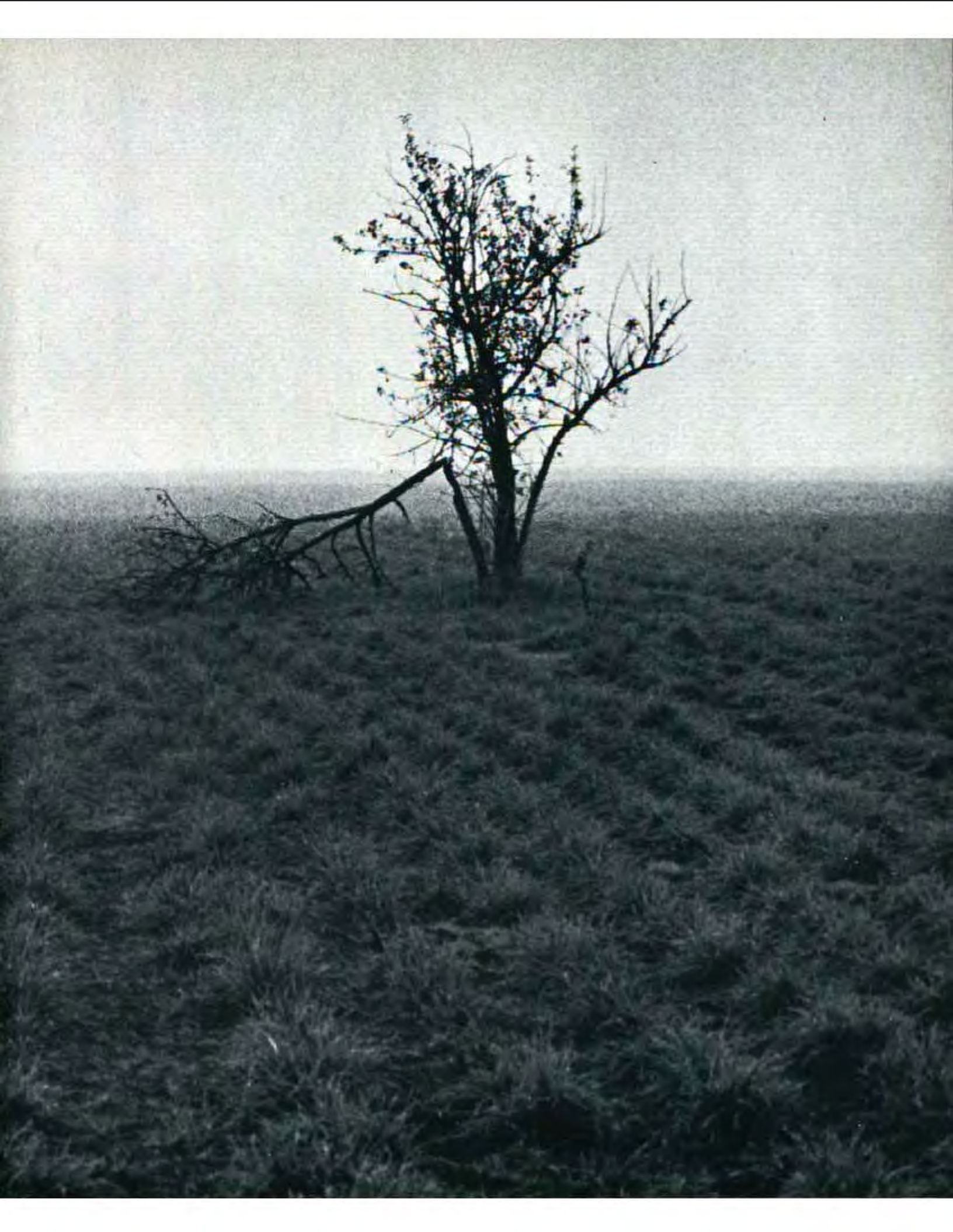
*Henry D. Thoreau*

*(As an inventory of our life support systems, circa 1970,  
these pages are dedicated to Earth Week, the environmental teach-in, April 20-24)*

















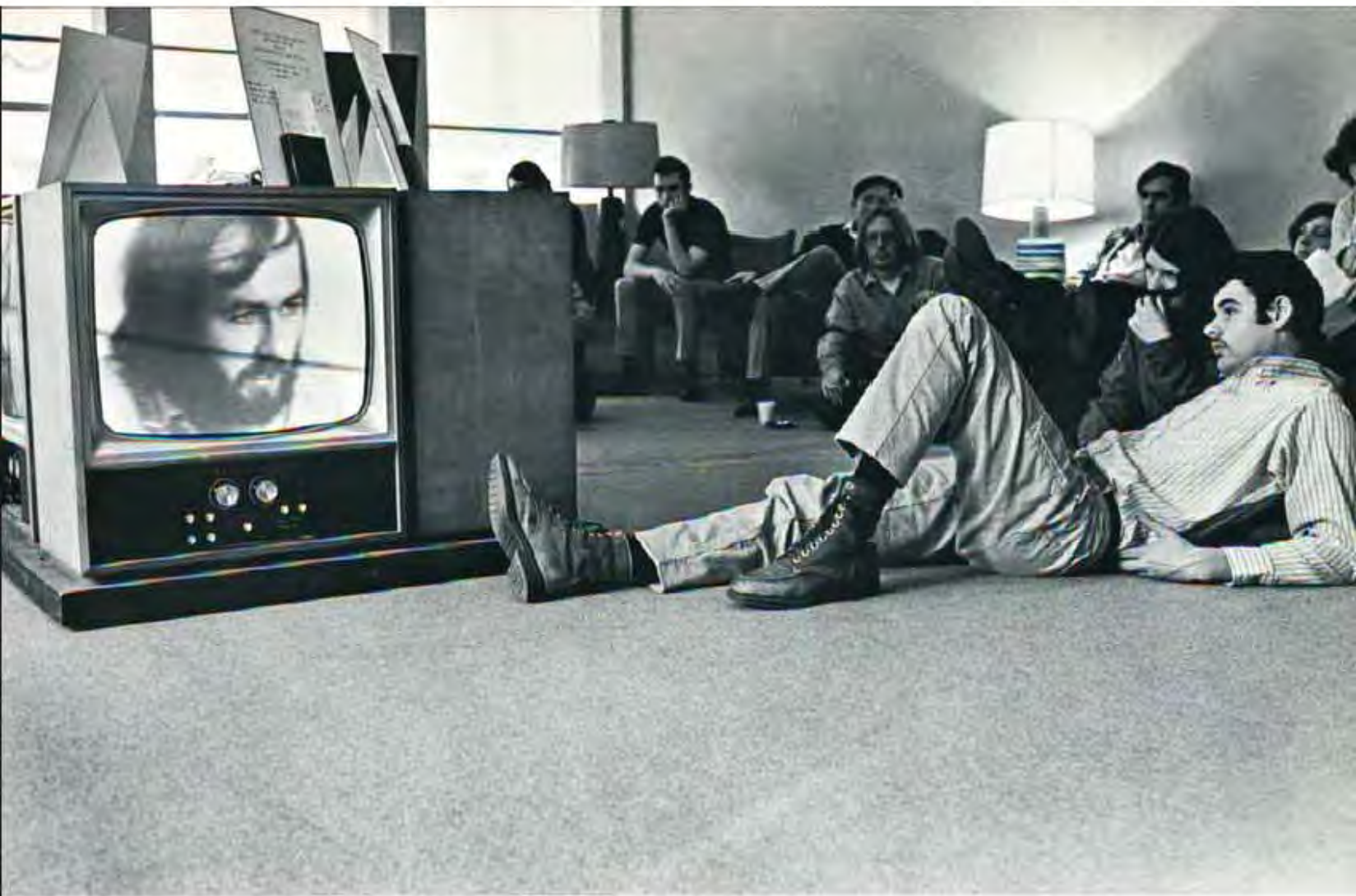
























*I stand by crying,  
I do not move to hurt  
or to be hurt  
I am forced to view  
your games of violence.  
But I cannot view them  
with your eyes.  
I see your guilt and anger  
I am against these wars  
theirs' and yours.  
I will not walk with you  
in that Garden of Evil  
that would seduce my soul.  
I am free to feel,  
not to wound.  
I am free to feel  
and to cry.*















*Nixon moved into Cambodia and the students moved outside. The sun was shining but it shone on an America torn by violence and hate in the hearts of Americans.*

*The conflict between the establishment's commitment to solving their problems and the students' commitment to fulfilling their human needs brought bloodshed to PSU.*

*The strikers, "children afraid of the dark / who have never been happy or good," built walls around their own despair. The barricades became emblems of an internal struggle to be recognized or even heard. But the walls were strong and tearing them down built higher, stronger walls. America and revolution was back where it started and Patrick Henry's words echoed again, "Gentlemen, you cry peace, peace, but there is no peace."*









## FOUR YEARS—A RECAP

1966/67. ASPSC president Joe Uris welcomed a class whose enrollment had dropped. Students had their first option to rent at the Viking Residence Hall. The Vanguard ran a hopeful editorial on the football season. The first student protest—they marched against Hubert Humphrey at the Sheraton in suits and ties. A student strike was called on programs run by the Activities' Establishment, students demanded greater representation. PSU had a homecoming. Talk was of having pass-no pass P.E., but that was clobbered by P.E. heads. Timothy Leary came to PSU and played to more than a cognitive crowd. The Provos ladled soup freely for the police's Big Drug Bust. Stokely Carmichael black crusaded and Allen Ginsberg read poetry, clothed.

1967/68. Tuition rose. Enrollment dropped. President Branford Millar resigned. Parking permits were issued and available. PSU had another homecoming—apparently its last. There was a Black Student Union. Draft protestors marched down Sixth Avenue wearing masks of napalmed children. Police shut down a theatre-dance happening in the Ballroom and students went home to communes. Eugene McCarthy came and attacked the war. Robert Kennedy came and attacked the war. A first SDS demonstration—against Dow recruiters on campus. Navy officials talked of recruiting elsewhere. Pass-no pass grading was approved, but only for requested courses. University status by '72, said state senator Ross Morgan.

1968/69. President Gregory Wolfe came. He started with 10,000 students and added two Task Forces. Pass-no pass grades became an option. The Times, a new student paper, started and folded. A student was evicted from the Viking Residence Hall for long hair. PSC lost its first five football games, despite a new coach. Football was questioned. A shutdown was proposed. Questions arose in the general discussion about the university's purposes. The college elected its first black student body president and became PSU.

1969/70. Papa John's was bought and sold, at last and another tradition succumbed to concrete. A series of anti-war protests and moratoriums culminated in campus closure and violence. President Wolfe found a new home. Sororities came back on campus. A new rally squad was chosen. Three student body presidents came and went. Those who graduated were relieved, no doubt, that it was over.



Adams, Richard  
 Adams, Peter C.  
 Anderson, Shirley  
 Aboon, Mary Jo  
 Aboon, Mickey  
 Al-Mazyed, Muzeyb Ibrahim



Acker, Diane J.  
 Anderson, Richard  
 Antoniou, John  
 Aysopoulou, Stratos Dimitrios  
 Bae, Steven Russell  
 Barua, Vicky Lynn



Barnes, Gary G.  
 Barnhart, Robert Allen  
 Bassi, E. Kong  
 Bays, Charles David  
 Beach, Carole A.  
 Be, Cynthia



Beauchamp, Beverly Elaine  
 Beck, Katherine Ann  
 Beck, John Joseph  
 Bennett, Larry  
 Benton, Phyllis Clora  
 Belzer, Ricky Diane



Bliss, Paul Whalen  
 Blyskal, William Louis  
 Bledsoe, Woodrow Moore  
 Booker, Patricia Jean  
 Bopar, Patricia  
 Bostrom, Judy Elaine  
 Broufford, Pauline M.



Brandenhorst, Kelly Ann  
 Brandt-Kruller, John Wayne  
 Brennan, Gary Ann  
 Brooks, Linda Carol  
 Brown, Louise C.  
 Brown, Katherine Susan  
 Buckley, Paul



Buehner, George Arthur  
 Burch, Lynn Georganna  
 Burton, Linda Leah  
 Burns, Michael James  
 Burns, David Alan  
 Busch, Shirley Ann  
 Cambell, Sheree



# CANDIDATES FOR DEGREES



Carlson, Dan Richard  
 Carlson, Lynn  
 Carter, Susan Ann  
 Cersosky, Diane  
 Charrera, Karen W.  
 Class, Janice Sue  
 Cohen, Debbie



Conella, Joseph Lawrence  
 Cook, Marjorie Ellen  
 Cobble, Kay Ira  
 Coughlin, Michael Desmond  
 Cross, Christina Maria  
 Cross, Terry Lynn  
 Cronley, Gloria Louise



Crouse, Michael Patrick  
 Cubie, Kevin  
 Curtis, Barbara Margaret  
 Davis, Beverly Ann  
 DeCicca, Lawrence Michael  
 DeLoeff, Edward Donald  
 Dentler, Judy Ann



DeSouza, Aagar  
 Dinduba, Barbara  
 Dombrowski, Diana Eugenia  
 Donaldson, Bruce William  
 Dorn, Dennis Lee  
 Ebrahimejad, Mahmoud  
 Eckert, Alana Frances



Elliott, Edwin Robert  
 Elwell, Josephine Terrell  
 Fabian, John Michael  
 Foster, David Alwood  
 Foster, Marvin John  
 Franklin, Jerry Robert  
 Freeman, Katherine Ella



Freeman, Timothy John  
 Fresh, Bob G.  
 Fuerson, Jim  
 Gearhart, Franklin L.  
 Getz, Cathie Lynn  
 Glosinger, Eric Eugene  
 Glosinger, Louella Rose



Green, Darrel  
 Gregson, Mary Lynn  
 Gruchala, Robert  
 Guthridge, Mary Elizabeth  
 Guyon, James Matthew  
 Hamill, Elizabeth Anne  
 Harnswell, David Eugene





Hankins, Katherine  
 Hanson, Thomas Michael  
 Heiding, Mary L.  
 Helzer, Ned Louis  
 Hensler, Carolyn Mary  
 Hepburn, Robert Edward Jr.  
 Hiltner, John Jacob



Hiett, Kimberly Ann  
 Hoff, Sharon Antoinette  
 Holcomb, Betty L.  
 Holman, Perry B.  
 Holstence, Phil Jr.  
 Hoppie, Ann  
 Horvath, Barbara Louise



Howard, Judith Ardin  
 Hoy, Janet Kathleen  
 Hudson, Alan Kemp  
 Irwin, Elbert Ross  
 Janes, Leo Rr  
 Jensen, Steve  
 Johnson, Allen Charles



Johnson, Susan Carol  
 Jones, Linda Lee  
 Jones, Shelby Suzanne  
 Kohl, Shazaki, V.  
 Kattan, Ghazi  
 Kay, Marilyn Margaret  
 Kelly, Raymond Lee



Kenagy, Jeffrey Lee  
 Kuchalla, Khalid M.  
 Kuk, Margaret Ann  
 Kudson, Clifford  
 Krenning, James Dale  
 Krueger, Kurt O.  
 Kruttschick, Alphonse Paul



Lake, Carol  
 Lambert, Phyllis Jean  
 Lense, John David  
 Lerner, Bob  
 Larson, Karen Ann  
 Larson, Sheryl Jean



Loach, Maynard Alan  
 Lowe, Kenneth Bruce  
 Lo, Quan What  
 Letzkus, Vera Anne  
 Lewis, Carol  
 Luskoff, Udo Arno  
 Long, Michael John







Lorenzen, Margaret Ann  
Lutz, William J.  
Mai, Tuyet  
McAymondzo, Donna  
McDonald, Sandra J.  
McMullen, Lotus Lee-  
Marion, Roger D.



Mastny, Sally Louise  
Mattingly, Susan Irene  
Meese, Gregory Lee  
Melott, Ronald Kenneth  
Melvin, Barry Langdell  
Meng, Gerhard  
Micciche, Douglas G.



Millegan, Margaret Ellen  
Michke, Kathleen Hughes  
Moe, Loi O.  
Morris, Kent Jr.  
Morris, Randy Ray  
Moss, David LeRoy  
Moultrie, Frederick Leonard



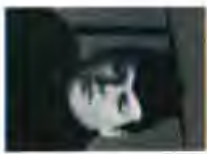
Myers, Lane  
Neal, Mary Jeannette  
Nelser, Marilyn Ruth  
Nelson, Gail  
Nelson, Jim Frederic  
Ness, Candy Jean  
Ngan, Henry



Nickerson, Joyce  
Noe, Sarah Louise  
Nolan, Lestle Marian  
Olson, Douglas Stuart  
Olson, Melton Jakob  
Onchi, Gary Wayne



Orwick, Kenneth  
Page, Richard  
Patterson, Janice Marie  
Peek, Sharon Sue  
Peters, Gary Blaine  
Philan, Benjamin Alan  
Pomeroy, Olive Geneva



Ramirez, George  
Ratter, Nancy L.  
Rauscher, Patricia Ann  
Reed, William  
Regner, Stephen Conrad  
Reilly, Michael Edward



Reynolds, Robert C.  
Richard, Carole A.  
Robbins, Daryl  
Rogers, Michael Ferrero  
Rosenthal, Richard Irving  
Rommel, Beverly Ann  
Runnell, Margaret Esther



Stanton, Morton  
Stuevold, Roger Lee  
Susi, Laraine R.  
Saville, Richard Dean  
Scott, Randy Lee  
Scott, Thomas Arthur  
Scott, Wendy Lee



Soder, Steven Hendrix  
Sellers, James Jay  
Senn, Constance June  
Shelton, Arden Lois  
Shipp, Laura Lou  
Shukri, Ibrahim Mohammed  
Shultz, Jay



Skorney, Barbara Garrett  
Smith, Cheryl Ann  
Smith, Jacquely Marie  
Smith, Karen May  
Spohn, Richard Edward  
Stangell, Nancy Lou  
Steffen, Jeffrey Charles



Stephens, Thomas C.  
Stewart, Marjorie Ellen  
Stewart, Patricia Anne  
St. Pierre, Larry  
Sutton, Robert Eugene  
Takeda, Yuko  
Tallch, William Leslie



Talbot, Sarah Katherine  
Tenn, Trishelbarn  
Tumbling, Donna May  
Turnell, Patricia  
Tunn, Traci  
Tipson, Mary Patricia  
Tolby, Rebecca Sue



Trapp, Janet Ellen  
Upchurch, Carolyn Louise  
Urschler, Constance LeYonne  
Vesich, Yvonne  
Woolcock, Peggy Lou  
Wagmanizer, Janet Louisa  
Wallberg, Paul Steven



Walker, Ralph Lawton  
Warneking, Maurine A.  
Weaver, Carolyn Elaine  
Wheeler, Marvin Earl  
Whittaker, Juanita Psalline  
Wiese, Peter John  
Wilson, Tanya Lee



Wissor, Dennis R.E.  
Winther, Rita Frances  
Worrendyke, Jan Sue  
Yamasaki, Ross Koichi  
Zeck, Donald Arthur





# CANDIDATES FOR DEGREES

- Aaxland, Richard C., *BS Bus Adm*  
 Abbott, Irene E., *BS Elem Ed*  
 Abendroth, Jeffrey L., *BS Soc Sci*  
 Abendroth, Susan K., *BS Sci*  
 Acuff, Richard E., *BS Bus Adm*  
 Adamek, Richard W., *BS Bus Adm*  
 Adams, Olga Jo, *BS Soc*  
 Adams, Peter C., *BS Psych*  
 Adelsheim, Virginia W., *BA Art/ Ceram*  
 Adkins, Charles Edward, *BS Bus Adm*  
 Ainey, Perns, *BA Elem Ed*  
 Albert, Mary Jo, *BA Eng TF Eng*  
 Alberston, Elery Warren, *BS Bus Adm*  
 Alexander, Thomas James, *BS Econ*  
 Alexander, Wriston Robert, *BS A & L, TF Eng*  
 Alfets, Jerrold Dale, *BS Bus Adm*  
 Al-Katsy, Gayle Louise, *BS Art- Grup des*  
 Alkire, John Joseph, *BS Elem Ed*  
 Allen, Nancy Lou, *BS Math*  
 Allen, Norma Jean, *BS H & PE TF H & PE*  
 Allen, Roberta M., *BS Elem Ed*  
 Allin, Victoria Ann, *BS Pol Sci*  
 Allison, Everett G., *BS Soc Sci*  
 Allison, James LeRoy, *BS Hist*  
 Al-Musyed, Mazyed Ibrahim, *BS Earth Sci*  
 Amling, Raymond Lee, *BA Pol Sci*  
 Amonson, Jean S., *BS Elem Ed*  
 Amos, William David, *BS Chem TF Chem*  
 Anagnostou, Nellie Marie, *BS Elem Ed*  
 Anderson, Earl Jimmy, *BA Elem Ed*  
 Anderson, Grant Edward, *BS Bus Adm*  
 Anderson, James Lee, *BS Hist*  
 Anderson, Jay Preston, *BS Math*  
 Anderson, Linda Lee, *BS Hist*  
 Anderson, Mark Richard, *BS Soc*  
 Anderson, Richard Martin, *BA Hist & Pol Sci*  
 Anderson, Ronald Keith, *BS Bus Adm*  
 Anderson, Steven Wesley, *BS Earth Sci*  
 Anderson, Thomas Michael, *BS Econ*  
 Anderson, William Arthur, *BS Psych*  
 Andrews, Bradley Arthur, *BS Apl Sci/Eng*  
 Andrews, Marcia Stephanie, *BA Eng*  
 Andrus, Joe B., *BS Soc Sci Urb Stu Cert*  
 Angerilli, Thomas Pasquale, *BS Pol Sci*  
 Angus, Jane Ellen, *BS Elem Ed*  
 Anicker, Dianne J., *BS Bus Adm*  
 Annas, Ray Richard, *BS H & PE*  
 Apley, David G., *BS Bus Adm*  
 Apostolox, John, *BS Bus Adm*
- Archer, Steven Ray, *BS A & L TF Mus*  
 Arena, Louise Irene, *BS Elem Ed*  
 Arena, Leon Ronald, *BS Soc*  
 Arrey, Alan L., *BS Pol Sci*  
 Argyropoulos, Stratos Demitrios, *BS Sp & TA*  
 Arnold, Sally Ann, *BS Biol*  
 Arrall, Linda Joy, *BS Soc Sci*  
 Arell, Theresa Jane, *BA Elem Ed*  
 Arrington, Zoe Annette, *BS Bus Adm*  
 Arthur, David James, *BS Biol*  
 Arthur, Jolene, *BS A & L TF Eng*  
 Ashland, Gerald Paul, *BS Bus Adm*  
 Ashton, Edward Michael, *BS Pol Sci Urb Stu Cert*  
 Asala, Merrilee, *BS Soc Sci*  
 Auch, Michael Gene, *BS Hist*  
 Austin, Donald Franklin II, *BA Eng TF Eng*  
 Avolio, Genaro William, *BS Earth Sci*  
 Babson, Jane Hall, *BS Soc*  
 Bach, Robert Lee, *BS Hist*  
 Buckner, Linda Faye, *BS Soc TF Soc Sci*  
 Beer, Steven Russell, *BS Pol Sci*  
 Baetkey, Mary Lu, *BS Elem Ed*  
 Bajus, Robert Lee, *BS Soc Sci*  
 Baggenstos, George Anthony, *BS Elem Ed*  
 Bagg, Donald Wayne, *BA Earth Sci*  
 Bailey, George Edward, *BS Econ*  
 Bailey, James McGraw, *BS Soc Sci*  
 Bailey, Ruth Sinclair, *BS Soc Sci*  
 Baker, Carolyn Ruth, *BS Soc*  
 Baker, Joanne Noreen, *BS Elem Ed*  
 Balfour, Jay Marvin, *BS Soc Sci TF Soc Sci*  
 Ball, Gordon M., *BS Bus Adm*  
 Bandfield, Marcia Lynn, *BS Elem Ed*  
 Bangs, Carol Jane, *BA Eng*  
 Banks, William Paul, *BA F L Span*  
 Baragli, Maria Beatriz, *BA F L Span TF Span*  
 Barfield, Peggy L., *BA Eng TF Eng*  
 Barger, Robert Kent, *BS Bus Adm*  
 Barne, Vicki Lyn, *BS A & L*  
 Barnes, Gary G., *BS Bus Adm*  
 Barnes, Sharon Lee, *BS Math*  
 Barnhart, Patricia Lynn, *BS Biol*  
 Barnhart, Robert Alan, *BS Bus Adm*  
 Baron, Frederick Jan, *BS Psych*  
 Barsoffi, Michael Peter, *BS Sci*  
 Barsoffi, William Anthony, *BS Soc Sci Urb Stu Cert*  
 Bartel, Adrienne S., *BA Eng*  
 Bassett, Kathleen Joan, *BS H & PE TF H & PE*  
 Bateman, Julie Anne, *BA Sp & TA TF Sp & TA*  
 Bates, Charles David, *BA F L Rus & F & Pol Sci*  
 Batsy, Charles Douglas, *BS Bus Adm*
- Bausch, Carole A., *BS Bus Adm*  
 Beadnell, Beverly Elaine, *BA Psych*  
 Bean, Katherine Ann, *BS Elem Ed*  
 Behee, James Lee, *BS Bus Adm*  
 Beck, David Ivan, *BS H & PE*  
 Beck, John Joseph, *BS Bus Adm*  
 Becker, Dennis H., *BS Bus Adm*  
 Becker, Larry Arnold, *BS Phil*  
 Bee, Steven Kenneth, *BS Art- Grup des*  
 Beecher, William Brown, *BS Biol*  
 Belknap, Robert E., *BS Phil*  
 Belleville, Sherrie Ann, *BS Elem Ed*  
 Belmore, James Westley, *BA Bus Adm*  
 Bennett, Beverly Ann, *BS Elem Ed*  
 Bennett, Claudia Faye, *BA Eng, TF Eng*  
 Benton, Phyllis Clara, *BS Soc Sci*  
 Berg, Frances Joanne, *BA A & L*  
 Berg, Harlan Albert, *BS Chem*  
 Berger, Nola Margaret, *BS Elem Ed*  
 Berglund, David Ernest, *BS Chem*  
 Bergstrom, Ingrid Marie, *BS Sci*  
 Berke, Donald Keith, *BS Math*  
 Berni, Beverly Sue, *BA Eng, TF Eng*  
 Bernards, Sandra Kathleen, *BS Soc, Soc Ser Cert*  
 Barnt, Joseph Philip, *BA Eng*  
 Berry, Glen Ingram, *BS Soc Sci*  
 Best, Barrett Joseph, *BS Bus Adm*  
 Betzer, Becky Diane, *BS Soc & Psy*  
 Bey, Mary Jean, *BS Elem Ed*  
 Beyl, Mary B., *BA Eng, TF Eng*  
 Biegel, Janet M., *BA Soc*  
 Bierma, Christina R., *BS H & PE, TF H & PE*  
 Birkes, Joan Elaine, *BS H & PE*  
 Birkett, Steven Gordon, *BS Hist, TF Soc Sci*  
 Birmingham, Patrick Michael, *BS Pol Sci*  
 Bishop, Clinton Ray, *BS Bus Adm*  
 Bjornson, Nancy Ann, *BS Elem Ed*  
 Black, Dianne Lynn, *BS Soc Sci*  
 Blay, Pearl Whalen, *BS Hist, TF Soc Sci*  
 Blazer, Dorman Stanford, *BS Psych*  
 Blettel, Milton Louis, *BS Sci*  
 Blettel, Woodrow Mercer, *BA Art- pnt & drw, TF Art*  
 Bloom, Jeffrey B., *BS Soc*  
 Bloom, Roxe Fay, *BS Elem Ed*  
 Bodine, William Paul, *BS Hist*  
 Bogue, Patricia Faye, *BA Pol Sci*  
 Bohn, Delbert Durard, *BS Hist*  
 Boldman, Jeffrey D., *BA Phil*  
 Boldt, Jeanine Cheryl, *BS Elem Ed*  
 Bolt, Walter Vernon, *BS Bus Adm*  
 Bolton, Martha Louise, *BE Elem Ed*  
 Boly, Paul Michael, *BA Eng*  
 Bonnkaen, William Alan, *BS Biol*
- Bontrager, Carl Gene, *BS Sci*  
 Bookman, Ronald Irwin, *BS Pol Sci*  
 Books, Patricia Jean, *BS Elem Ed*  
 Bookwalter, Christy Susan Gordon, *BS Bus Adm*  
 Borasund, Jeffrey Steven, *BS Geog*  
 Boss, Steven H., *BA Art: pnt & drw*  
 Botten, Jim L., *BS Bus Adm*  
 Bounds, Jerry Allen, *BS Bus Adm*  
 Bouton, Judy Elaine, *BS Psych*  
 Bowman, Linden Bates, Jr., *BS A & L*  
 Boylan, Ronald Ralph, *BS Phil*  
 Bradford, Pauline M., *BS Elem Ed*  
 Branderhorst, Nelly Ann, *BA Elem Ed F L Ger & Fr*  
 Brandon, Mary Ann, *BA Elem Ed*  
 Brandon, Paul Richard, *BS Pol Sci*  
 Brandon, Richard Duane, *BS Anth*  
 Brasel, William Byard, *BS Bus Adm*  
 Brauckmiller, John Wayne, *BA F L Fre Cent Eur Stu Cert*  
 Braun, James Joe, *BS Bus Adm*  
 Bree, William Robbins, *BS Biol*  
 Brehm, Shirley Jo, *BS Art: pnt & drw*  
 Brendle, Leslie Marie, *BS Soc Sci, TF Soc Sci*  
 Brenner, Kenneth LaVern, *BS Math*  
 Brenton, Gay Ann, *BS Art: pnt & drw*  
 Brewer, Wm. Bernard Jr., *BS Math, TF Math*  
 Brock, Leon George, *BS Chem*  
 Bronson, Robert K., *BS Bus Adm*  
 Brooks, Linda Carol, *BS Elem Ed*  
 Brown, Jane Elizabeth, *BS Soc Sci*  
 Brown John Dennis, *BS Pol Sci*  
 Brown John Michael, *BS Math*  
 Brown, Joyce Lorene, *BS Elem Ed*  
 Brown, Lloyd Everett, *BS Bus Adm*  
 Brown, Lois Ardell, *BS Elem Ed*  
 Brown, Louise C., *BA Eng*  
 Brown, Lovene Elaine, *BS H & PE, TF H & PE*  
 Brown, Nancy Ellen, *BA F L Fre, TF Fre*  
 Brown, Robert Newell, *BS Bus Adm*  
 Brown, Rodney Clyde, *BS Math*  
 Broyles, James Wayne, *BS Soc Sci*  
 Brune, Jennene, *BS Math*  
 Brunelle, Jeanne Ann, *BA Eng*  
 Brunette, Theresa Marie, *BS Elem Ed*  
 Bruno, Kristine Susan, *BS Art- Grup des*  
 Brunold, Terrence Allen, *BS Math*  
 Brunsmann, Philippa Nell, *BA Hist*  
 Brynclson, Donald Ray, *BS Bus Adm*  
 Buckner, Thomas Arthur, *BS Soc Sci*  
 Buettner, George Arthur, *BA Elem Ed*  
 Burch, Lynn Georgiana, *BS A & L*  
 Burchell, Peter Harold, *BS Soc Sci, TF Soc Sci*  
 Burgen, Darrell Eugene, *BA Anth*  
 Burger, Gerald Lawrence, *BS Bus Adm*  
 Burger, Linda Jean, *BA Elem Ed*  
 Burger, Walter R. Jr., *BS Art- pnt & drw*  
 Burke, Janice Marie, *BS A & L*  
 Burke, Michael James, *BS Bus Adm*



Burke, Ralph Leonard Jr., BS Sci  
 Burnett, Judy S., BA Eng  
 Burnett, Lawrence Blair, BS Sci  
 Burns, David Allan, BS Psych  
 Butcherell, Margaret Michel,  
 BS Psych  
 Busch, Patricia Ann, BA Math & Psych  
 Busch, Tyrone Glen, BS Soc Sci  
 Busick, Shirley Ann, BS Elem Ed  
 Butcher, Dick Eben, BS Hist  
 Butler, Jocelyn Allee, BA Eng  
 Butler, Michael Mead, BS Geog  
 Butler, Suzann Jean, BS A & L,  
 TF Sp  
 Burman, Carol Jean, BS Elem Ed  
 Byers, Gary E., BS Bus Adm  
 Cady, Dean Edward, BA Soc  
 Callahan, James J., BS Elem Ed  
 Cameron, Dennis Roy, BS Psych  
 Cameron, Shirley Patricia, BS Elem Ed  
 Camillo, Michael Blair, BS Hist  
 Campbell, Anthony Evan, BS Soc Sci  
 Campbell, Douglas Llewellyn,  
 BA A & L  
 Campbell, Pauline Marie, BS Elem Ed  
 Campbell, Sherry S., BS Soc  
 Cannon, Cheryl Joan, BS Elem Ed  
 Cannon, Joseph Thomas, BA Art:  
 Grap des  
 Cannon, Mary Patricia, BS Soc  
 Cantón, Edmund Joseph,  
 BA Eng  
 Caramella, Yvigi Diana, BA A & L  
 Carbone, Philip, BA Pol Sci  
 Carlson, Dan Richard, BS Bus Adm  
 Carlson, Janis Lynn, BS Elem Ed  
 Carlson, JoEllen, BS Elem Ed  
 Carlson, John H., BS Sci,  
 Pub Health Cert  
 Carlson, Richard Roy, BS Bus Adm  
 Carlson, Stephen Michael,  
 BS Soc Sci  
 Carlson, Michael Raymond, BA Soc  
 Carpenter, Juanita June,  
 BS Elem Ed  
 Carrington, Alan Calvin, BS Bus Adm  
 Carother, Betty Jean, BS Elem Ed  
 Carson, Judi, Lynn, BS A & L  
 Carter, Susan Ann, BS Elem Ed  
 Carter, John David, BS Bus Adm  
 Carry, Margo, BS Elem Ed  
 Carver, Gregory Lee, BS Soc Sci  
 Cave, Elbert Hardy, BA Hist  
 Cavanaugh, James LeRoy, BS Bus  
 Adm  
 Champ, Linda Louise, BA Pol Sci  
 Champagne, Angela Marie,  
 BA Elem Ed  
 Chapman, Patricia Irene, BS Biol  
 Charno, David Henry III,  
 BS Bus Adm  
 Charters, Karen W., BS (DM)  
 Psych Sci  
 Cheng, Margreta, BA Soc  
 Cherry, Roger Leon, BS Anth  
 Chiotti, Bart James, BS Econ  
 Christinger, Richard L., BS Soc Sci  
 Christensen, Anthony Charles,  
 BS Bus Adm  
 Christianson, Gary Dean, BS Art:  
 Grap des  
 Church, Alice E., BA Elem Ed  
 Cleich, Mary Lou, BA Elem Ed  
 Cissna, Janice Sue, BS Elem Ed  
 Claboe, David Patrick, BS Soc  
 Clark, Ronald Vincent, BS Psych  
 Clancy, John William, BS Psych  
 Clark, David D., BS Psych  
 Clark, Donald Earl, BS Soc Sci  
 Clark, Dudley Michael, BS Econ  
 Clark, Elvaine Ann, BS Art:  
 drw & pnt  
 Clark, Gary Lynn, BS Elem Ed  
 Clark, Jane Frances, BS Soc Sci  
 Clark, William Bruce, BS Sci  
 Clarke, Christopher Reed, BA Eng  
 Clarke, John McCormack, BS Bus  
 Adm  
 Clarke, Thomas Eugene, BS Bus Adm  
 Klassen, Bonnie Christine, BA  
 Elem Ed  
 Clary, Daniel Michael, BS Hist,  
 TF Soc Sci  
 Clement, Mark J., BS Geog  
 Clemmer, Leonard, BS Psych  
 Cline, Janet Lyll, BS Soc  
 Coats, Kenneth Ray III, BA Music  
 Coberly, M. Lynn, BS Elem Ed  
 Cohen, Debbie, BS Soc Sci  
 Cohen, Philip David, BS Bus Adm  
 Cole, David Bruce, BS Hist  
 Cole, Jeffrey Walter, BS Bus Adm  
 Collé, Jimmy F., BS Econ  
 Cole, Victor Alan, BS A & L  
 Coleman, Larry William, BS Bus  
 Adm  
 Collins, Judith Ann, BS Elem Ed  
 Colson, Randolph Lee, BS Bus  
 Adm  
 Colton, Graham Leo, BS Bus Adm  
 Colton, Stephen Glen, BA Pol Sci  
 Camilla, Joseph Lawrence, BS  
 Bus Adm  
 Conn, David Eric, BS Sci  
 Conn, Marjorie Ellen, BS Elem Ed  
 Connors, Anne Lucille, BS Elem Ed  
 Cook, Lynell, BS Soc Sci,  
 TF Soc Sci  
 Cook, Thomas LeRoy, BS Bus Adm  
 Cooke, Dale Alan, BS A & L  
 Coon, Terry Lee, BA Elem Ed  
 Cooper, William E., BS H & PE,  
 TF H & PE  
 Coors, Richard Martin, Jr., BS Anth  
 Corbin, Kay Ira, BS Bus Adm  
 Core, David Byron, BA Bus Adm  
 Cornell, Linda Susan, BS H & PE,  
 TF H & PE  
 Correll, Richard L., BA Pol Sci  
 Cotti, Dennis Gene, BA Anth  
 Costine, Lois J., BS Soc Sci  
 Cottrill, Conal Jean, BS Biol  
 Cotton, Claudia Ann, BS Elem Ed  
 Coughlin, Michael Desmond, BS Art:  
 Grap des  
 Coulson, George Kent, BS Geog  
 Coulson, Lynn Elaine, BA Eng  
 Crafter, Marjorie Ann, BA A & L  
 Courtney, Dwight Dennis, BS Bus Adm  
 Craven, Geraldine Vida, BS Elem Ed  
 Coy, Cynthia Jane, BS Elem Ed  
 Craig, Jerry Garett, BS Bus Adm  
 Craig, Lawrence Richard, BS Pol Sci  
 Cramer, Linda M., BS Soc  
 Crawford, Paul William, BA Phys  
 Craycroft, Peter McDowell, BA Bus Adm  
 Orenshaw, Mary Lucretia, BA Elem Ed  
 Cronin, Richard Allen, BA Soc Sci &  
 Psych  
 Cronk, Pamela Anne, BA Eng  
 Cross, Christina Maria, BA Hist/Pol Sci  
 Cross, Terry Lynn, BS Math  
 Crossley, Gloria Louise, BS Biol  
 Crause, Michael Patrick, BS Psych,  
 Sci  
 Cumbly, Wayne Earl, BS Soc Sci,  
 TF Soc Sci  
 Curry, Lois L. Gamet, BA F L Span  
 Curry, Marilyn A., BS Econ  
 Curtin, Timothy Michael, BS Bus Adm  
 Curtis, Barbera Margerita, BS Bus Adm,  
 TF Bus Ed  
 Czezewski, Sharon Mabel, BS Soc Sci  
 Daggelt, John Michael, BS Elem Ed  
 Dalrymple, Joan E., BS Elem Ed  
 DuMello, Antonia Marie, BA F L Ger  
 Dana, Marc Norman, BA Eng,  
 TF Eng  
 Daniels, Jeanne Ann, BS Sci  
 Daniels, W. Olympia, BS Soc Sci  
 Daugherty, Michael Terry, BS Pol Sci,  
 TF Soc Sci  
 Darnelton, Bill V., BS Psych  
 Darham, Edward A.M., BA Anth  
 Daryn, Michael Paul, BS Bus Adm  
 Day, Thomas Allan, BA Eng  
 Decker, Richard Myron, BA Biol  
 Debie, William Clay, BS A & L,  
 TF Eng  
 Deems, Donald Frank, BS Biol  
 Earl, Pamela Nann, BS Elem Ed  
 Earley, Thomas Fraser, BA Eng  
 Eaton, Diane Marie, BA Elem Ed  
 Ebert, John Timothy, BS Sci  
 Ebrahimpour, Mahmoud, BS Chem  
 Eckert, Alana Frances, BS Elem Ed  
 Eddy, Linda Kay, BS Elem Ed  
 Edelstein, Carol Jean, BA A & L,  
 TF Sp  
 Edwards, George Marson, BS Chem  
 Edwards, Robert Wayne, BA Pol Sci  
 Edy, James W., BS Bus Adm  
 Egan, Roger Kent, BS Sci  
 Eghers, Kathie Marie, BS Elem Ed  
 Eichenberger, Jay Scott, BS Bus Adm  
 Eichman, Gary C., BS A & L,  
 TF Eng  
 Ekong, Ruxsey Edet, BS Hist  
 Eklold, Darrell Raymond, BS  
 Bus Adm  
 Ellett, Mickey R., BS H & PE,  
 TF H & PE  
 Elliott, Edwin Robert, BS Bus Adm  
 Elliott, Elizabeth Marie, BS Hist  
 Davis, Beverly Ann, BS Psych  
 Davis, Cynthia Lynn, BS Soc  
 Davis, Dell Gene, BS A & L  
 Davis, Elwood Samuel, BS Sci,  
 TF Gen Sci  
 Davis, Ivan Stewart, BS Hist  
 Davis, James Jay, BS Sci  
 Davies, Jeffrey Tyson, BS Hist  
 Day, Chisum, BS Elem Ed  
 Dean, Gregory Evan, BS Psych  
 Dearborn, Thomas Homer, BS Soc Sci  
 DeBellis, Sandra Lee, BA Elem Ed  
 DeCoco, Lawrence Michael, BS Bus Adm  
 Delaney, Jennifer Gall, BA Sp & TA  
 DellaSella, Jannette Ruth, BS Soc Sci,  
 TF Soc Sci  
 DeBoff, Edward Donald, BS Math  
 Denman, Betty Ann, BS Elem Ed  
 Dennis, D. Craig, BA Pol Sci  
 Dennis, Lawrence Arthur Jr., BS Bus  
 Adm  
 Dennis, Steven Louis, BS Apl Sci, Eng  
 Dent, Daniel Lee, BS Geog  
 Dentler, Judy Ann, BS A & L,  
 TF Sp  
 DeSerges, Dominique Suzanne, BS  
 Hist, TF Soc Sci  
 Deurwaarden, Dan Milton, BS Bus Adm  
 DeVito, Albert Curtis, BS Phil  
 DeWeese, Ann H., BA Anth  
 Dewey, Mary Margaret, BS Bus Adm  
 DeWitt, Dennis Craig, BS Bus Adm  
 Dillon, Dennis Lee, BS Sp & TA Urb  
 Stu Cert  
 Dimick, Robert L., BS Soc  
 Dirmir, Gary E., BS Bus Adm  
 Dodson, Lee Roy, BS Math  
 Dombrowski, Diana Eugenia, BS Hist  
 & Soc  
 Donnell, Ingrid Ilse, BA F L Ger,  
 TF Ger  
 Donaldson, Bruce William, BS Biol  
 Donough, Christine Anderson, BS Art:  
 drw & pnt  
 Dong, Anne, BS Soc Sci  
 Donin, Dennis Lee, BS Hist  
 Dowling, James Edward, BS Psy & Soc  
 Drakulich, Kay Irene, BS Bus Adm  
 Dresser, Thomas Francis, BS Bus Adm  
 Driesen, Jacob Lauriston, BS Bus Adm  
 Driggs, Sharon LeeAnn, BS Elem Ed  
 DuCharme, Suzette A., BA Art:  
 gra des  
 Duff, James Edwin, BS Biol  
 Dummer, Ronald Gene, BS Bus Adm  
 Duncan, Dean Bryan, BS Sci  
 Duncan, Donald Robert, BS Geog  
 Dunetz, Joseph Richard, BA Pol Sci  
 Urb Stu cert  
 Dunken, Marshall Fielding Jr, BS Soc  
 Law Enf Cert  
 Ellis, Clyde Burritt, BS Psych  
 Ellis, Richard Alan, BS Biol  
 Ellis, Robert Lawrence, BS Soc  
 Elliott, Candace Lee, BS Psych  
 Elmer, Anne Irene, BS Elem Ed  
 Ellwell, Josephine Terrell, BA Eng  
 Elwood, Carl Franklin, BS Phil  
 Embree, Douglas M., BS Bus Adm  
 Ennweit, David Allen, BS Bus Adm  
 Ennwich, Gretchen Heideman, BS Soc  
 Enberg, Christine Mary, BS Elem Ed  
 Eshburn, Carol Sue, BA Eng  
 Erickson, Michael Eric, BS Soc Sci  
 Evans, James D., BS Bus Adm  
 Espey, Rachel K., BS Sci  
 Evans, Fred James, BS Pol Sci  
 Everett, George Richard Jr., BS  
 H & PE  
 Everett, Judith Holwe, BS Elem Ed  
 Ewan, Ruth Belle, BS Soc Sci  
 Fabian, John Michael, BS Pol Sci  
 Fabey, Joseph R., BS Bus Adm  
 Fair, Beverly Jo, BS Soc Sci  
 Falcio, Khadham Saleh, BS Pol Sci  
 Fair, James Franklin, BS Elem Ed  
 Falter, Robert J., BS Soc  
 Falta, Randy Lee, BS Sci  
 Fantz, Roger Henry, BS Math  
 Farrar, Patricia K., BS Elem Ed  
 Farmer, Clifford Charles, BS Biol  
 Fears, Anita Eileen, BS Elem Ed  
 Fears, Davis H., BS Hist & Pol Sci,  
 TF Soc Sci  
 Fee, Thomas Floyd, BS H & PE  
 Feeney, Donald Robert, BS Bus Adm  
 Fegol, Joan Cecilia, BS Bus Adm  
 Fendel, George W., BA Soc Sci & Soc  
 Ferguson, Gerald Ray, BS Soc Sci  
 Fest, Susan Lynn, BS Elem Ed  
 Feyen, Harry, BA Soc Sci, TF Soc Sci  
 Fiata, Douglas Wrenn, BS Apl Sci-Eng  
 Ficker, Leon Francis, BS Bus Adm  
 Fielding, Naomi Lee, BA Eng  
 Fields, Donald Max, BS Pol Sci  
 Fischer, Phillip Paul, BS Elem Ed  
 Fish, Anita Louise, BA Eng,  
 TF Eng  
 Fisher, Nicholas Kenneth, BS Bus  
 Adm  
 Fisher, Shirley Ann, BS Elem Ed  
 Fiske, Jack Howard Jr., BS Bus Adm  
 Fiske, John Robert, BS Bus Adm  
 Fiske, Shirley Suzanne, BS Bus Adm  
 Fitch, Dennis Geo., BS Psych  
 Fitterer, Richard Steven, BS Apl Sci  
 Fitzgerald, Sherrie Eileen, BS Sci  
 Fleck, Kenneth Stuart, BS Bus Adm  
 Floten, William Frederick, BS Bus  
 Adm  
 Fogle, Jimmie Byrd, BS Soc Sci  
 Foreman, Patrick William, BA Eng  
 Foreman, Linda Jean, BS Bus Adm,  
 TF Bus Ed  
 Forrest, Mary E., BS Phil  
 Forsythe, Thomas Glenn, BA Eng  
 Fortin, Richard Paul, BS Soc Sci  
 Fosback, Norman G., BS Bus Adm  
 Foster, Daniel Patrick, BS Soc Sci  
 Foster, David Atwood, BS Apl Sci  
 Foster, Guy Rippen, BA Math  
 Foster, John G., BS Soc  
 Foster, Virginia M., BA Eng  
 Faust, Marvin John, BS Phys  
 Fowler, Richard Y., BS Soc Sci  
 Fox, Mary Lou, BS Elem Ed  
 Fragasso, Jerry J., BS Bus Adm  
 Frank, Gayle Allison, BA Art:  
 Sculpt  
 Frank, Sidney V., BS Sci  
 Frank, Stanley Roy, BS Geog  
 Franklin, Brian Lee, BS Econ  
 Franklin, Jerry Robert, BS Soc  
 Franz, Lawrence Gabriel, BA Econ  
 Frazier, John Michael, BS A & L  
 Free, Bruce Allen, BS Biol  
 Freeman, Katherine Ella, BS Sci,  
 TF Gen Sci  
 Freeman, Timothy John, BS Bus  
 Adm & Psych



Freeman, Vernon Elmer Jr., BS  
 H & PE, TF II & PE  
 Fresh, Bob G., BS Bus Adm  
 Friedman, Arnos, BS Apl Sci  
 Fritchman, Ralph Robin, BS A & L  
 Froseth, Linda Ann, BS Sci  
 Frost, Stanley Allan, BS Math  
 Fuller, Dennis Franklin, BS Pol Sci  
 Funes, Shelley, BA Sp & TA,  
 TF TA  
 Gab, Brenda Lee, BA F I, Fr  
 Gates, Beverly W., BA Art, Sculpt  
 Galick, John Anthony, BS Bus  
 Adm  
 Gallucci, Ronald Frank, BS Soc Sci  
 Gaman, Elizabeth Joanne, BA Eng  
 Ganssheim, Calvin Edward Jr.,  
 BS Bus Adm  
 Gardner, Roger W., BS Apl Sci-Eng  
 Garbhan, Natalia, BA Eng,  
 TF Eng  
 Garbarró, Thomas John, BA  
 Psych  
 Garland, Maureen, BS A & L  
 Garner, Johnny Dennis, BS Psych  
 & Soc  
 Gaul, Joannette Beck, BS Psych  
 & Soc  
 Gearhart, Franklin L., BS Bus Adm  
 Gearin, Peter Raleigh, BS Bus  
 Adm  
 Geary, Marceline Harrigan, BS  
 Art, Sculpt  
 Geiger, Darrell Edwin, BS Pol Sci  
 Geltz, Cathie Lynn, BS Elem Ed  
 Geltz, James Arthur, BS Math  
 Genheimer, Cheryl Ann, BS Sp  
 & TA  
 Giannetti, Denise Karlene, BA  
 Elem Ed  
 Gibson, David Braden, BS Psych  
 Giggear, Milton Durrelle, BS Bus  
 Adm  
 Gilbert, Donald Richard, BS  
 Bus Adm  
 Gilbert, Maurice William, BS Hist  
 Gill, James Edward, BS Elem Ed  
 Gilles, Thomas Edward, BS Bus Adm  
 Gillespie, Alan Kent, BS Bus Adm  
 Gillespie, Braden Fredric, BS Soc Sci  
 Gilliam, Ralph Wayne, BS Art, Sculpt  
 Gilmore, Marion Genita, BS Soc &  
 Psych Soc Serv Cert  
 Gilmore, Michael Roy, BS Phys  
 Gilpin, Richard Alfred, BS Math  
 Ginn, Catherine Mary, BS Biol  
 Gionet, Leonard A., BS Econ  
 Givens, Michael Clark, BS Hist  
 Gjeldre, Sandra L., BS Elem Ed  
 Glas, Ronald Arthur, BA Psych  
 Glosenger, Eric Eugene, BS Psych  
 Glosenger, Lovetta Rose, BS H & PE  
 TF II & PE  
 Glosson, Harriet Elaine, BS Elem Ed  
 Goddard, M. Reed, BS Geog  
 Goddard, Terry David, BS Bus Adm  
 Goehring, Marcia Lee, BS Art,  
 Grap des  
 Goldman, John Joseph, BS Biol  
 Goldman, Margo Debra, BS Bus Adm  
 TF Bus Ed  
 Goldsmith, Mattie Jewel, BS Sci  
 Goldsmith, Victoria Lee, BS Elem Ed  
 Goodrick, John Byron, BA Hist  
 Gordon, Louis W., BS Pol Sci  
 Gould, Norman Keith, BS Art,  
 drw & pnt  
 Grady, Richard Nelson, BS Bus Adm  
 Graf, Stephen Alfred, BA Pol Sci  
 Graham, Kathleen Marie, BA F I, Fr  
 & Span  
 Grant, Mary Anne, BA A & L  
 Gray, Karen Jo., BA Eng  
 Gray, Kyle E., BS Bus Adm  
 Green, Frank Darrel, BS Soc Sci,  
 TF Soc Sci  
 Green, Lee M., BS Psych  
 Green, Robert Edward, BS Bus Adm  
 Greene, Mary Ann, BS H & PE,  
 TF II & PE  
 Green, Thomas George, BS Elem Ed  
 Greenwood, Debra A., BS Psych  
 & Sci  
 Greenwood, James A., BS Psych  
 & Sci  
 Greenwood, Susan Ellen, BS Bus  
 Adm, TF Bus Ed  
 Gregg, David R., BS Bus Adm  
 Gregson, Mary Lynn, BS Elem Ed  
 & Psych  
 Greve, Priscilla Mary, BS Elem Ed  
 Gröschler, Alma Regina, BS Elem  
 Ed  
 Griffin, Joseph David, BS Soc Sci  
 Griffith, Elizabeth Ann, BS Biol,  
 TF Biol  
 Griffith, Jeffrey Knowles, BS Biol  
 Griffith, Susan Hayward, BS Elem  
 Ed  
 Grindler, James Ther, BS Hist &  
 Pol Sci  
 Grindstaff, Michael Fayne, BA Econ  
 Grogan, Daniel Malchis, BA Hist  
 Grohs, Patricia Elaine, BS Elem Ed  
 Groomesh, Mary Helene, BS Elem  
 Ed  
 Gross, E. Alcen, BA Elem Ed  
 Grossi, Margaret Charleen, BS  
 Hist  
 Guenther, Hubertus P.E., BA  
 F I, Ger  
 Guernsey, Donald William, BS  
 Bus Adm  
 Gurst, David Allen, BS Earth Sci  
 Guenzey, Ruth E., BS Bus Adm,  
 TF Bus Ed  
 Gust, George J. Jr., BS Biol  
 Gustafson, Stephen J., BS Bus Adm  
 Guthridge, George Lloyd, BA Eng  
 Gualbridge, Mary Elizabeth, BS  
 Elem Ed  
 Guynup, James Matthew, BS Elem  
 Ed  
 Hackett, Elaine Louise, BA Anth  
 Hafferson, Mary Jeanne, BS A & L  
 Haglund, Kay Alan, BS Sci  
 Hall, Marilyn V., BS Soc  
 Halling, Jane Constance, BS Elem  
 Ed  
 Hallock, Stephanie Elizabeth,  
 BA Eng  
 Hamill, Elizabeth Anne, BS Elem  
 Ed  
 Hamilton, John Bruce, BS Bus  
 Adm  
 Hamlik, Thomas Brand, BS Math  
 Hanawalt, David Eugene, BS Psych  
 Hanby, Irene Marlin, BS Elem Ed  
 Hancock, John Sydney, BA Anth  
 Hankins, Katherine, BA A & L  
 Hannigan, Scott Reagen, BS Econ  
 Hanahan, Patrick Lloyd, BS Chem  
 Hansen, John Lloyd, BS Bus Adm  
 Hanson, Andrea Rebecca, BA A & L  
 Hanson, Barbara Kay, BS Psych  
 Soc Serv Cert  
 Hartow, James Myron, BS Biol  
 Harmon, Thomas Michael, BA F I,  
 Rus & Ger  
 Harnett, Melvin Joel, BS Soc Sci  
 Harper, Cecil Frederick IV, BS Hist  
 & Soc Sci  
 Harper, John Colma Jr., BS Bus Adm  
 Harper, Margaret Joan, BA Psych  
 Harper, Richard W., BS Art,  
 drw & pnt  
 Harriman, Kathleen, BA Eng  
 Harris, Jeffrey Park, BS Biol  
 Harrison, Gayle Ann, BS Sci  
 Hart, Joseph Christopher, BS Psych  
 Harbauer, Jane Rae, BS Psych  
 Hartley, George Wellington III,  
 BS Bus Adm  
 Hangstad, JoAnn Jeanette, BA Eng  
 Hauser, Susan Gail, BA Eng  
 Hawkins, Susan Eileen, BA A & L  
 Hayden, Terrence L., BS Apl Sci-Eng  
 Haynes, Michael Allen, BA Anth  
 Hays, Gale Lynn, BS Elem Ed  
 Hazen, Helen Johnson, BS Psych  
 Heasman, Gerald Louis, BS Psych  
 & Elem Ed  
 Hedberg, John Brent, BS Bus Adm  
 Hedrick, Nanette, BS Soc Sci,  
 TF Soc Sci  
 Hego, William David Sr., BS Earth Sci  
 Heidi, Arthur M., BS Bus Adm  
 Heikos, Judy Ann, BS Elem Ed  
 Heilig, George Bradley, BS Pol Sci  
 Heitz, Timothy Robert, BS Pol Sci  
 Heilding, Mary L., BS Elem Ed  
 Helgren, Marion Margaret, BA Soc  
 Sci  
 Helm, Claudia Jo, BS Hist  
 Helzer, Ned Louis, BS H & PE,  
 TF H & PE  
 Henick, Lawrence Donald, BS Bus  
 Adm, TF Bus Ed  
 Henley, Linda Grace, BA Eng  
 Henselman, Robert Anthony,  
 BS Chem  
 Henwood, Linda Diane, BS Bus Adm  
 Hensler, Karen Lynn Mary, BA F I,  
 Ger, TF Ger  
 Hephorn, Michael G., BS Bus Adm  
 Hephurn, Robert Edward Jr.,  
 BS Bus Adm  
 Hermann, James Robert, BS Biol  
 Herrie, Gary A., BS Bus Adm  
 Hersey, Carol Fallon, BS Elem Ed  
 Hess, Ronald Leo, BS Bus Adm  
 Hewitt, Earle Joseph, BS Soc Sci  
 Heydtloff, Susan Lynn, BA Eng  
 Hibbs, Charles Harold Jr., BS Anth  
 Higgins, Shawn William, BS Phys  
 Hildebrand, Paul Richard, BS Bus  
 Adm  
 Hiltgaertner, Peggy Ann, BS Bus Adm  
 Hillard, David Leroy, BS Bus Adm  
 Hiltner, John Jacob, BS A & L  
 Hinchliff, William Charles, BS Pol Sci  
 Hinck, Roger C., BS Elem Ed  
 Hintz, Edith Anne, BS Elem Ed  
 Hight, Kimberly Ann, BA Eng F I, Fro  
 Hobson, Richard Alan, BS Sci  
 Hodge, Gerry J., BA Eng, TF Eng  
 Hoff, Ruth Cary, BS Hist  
 Hoff, Sharon Antoinette, BA Fr  
 & Ital  
 Hofeldt, Ronald Lloyd, BS Sci  
 Hoffman, Charles H. III, BA Bus Adm  
 Hoffmann, Jeanne Marie, BS Elem Ed  
 Hogland, Gerald H. Jr., BS Apl  
 Sci-Eng  
 Hogue, David Charles, BS Psych  
 Holbert, William Edward Jr., BA  
 Bus Adm  
 Holcomb, Betty L., BS Elem Ed  
 Holcomb, Brian Lee, BS Hist  
 Holcomb, Richard Alan, BS Hist  
 Holman, Penny B., BA Elem Ed  
 Holland, David L., BS Bus Adm  
 Holler, Jesse Adrian, BS Psych  
 Holm, Mary Elizabeth, BS Biol  
 Hohmboe, Richard Michael, BS  
 Bus Adm  
 Holmes, Michael William, BS Sci  
 Holyheimer, Phil Jr., BS Soc Urb Sta  
 Cert  
 Hoover, William R., BA Eng  
 Hopper, Eleanor Marie, BS Elem Ed  
 Hopple, Ann, BS Elem Ed  
 Horton, Roy A., BS Art, Grap des  
 Horvath, Barbara Louise, BS Elem  
 Ed  
 Houghton, Edward John, BS Bus  
 Adm  
 Howard, Judith Anita, BA Elem Ed  
 Howard, Robert Joseph, BS Pol Sci  
 Howell, Nedra Estelle, BS Elem Ed  
 Howells, Richard D., BS A & L  
 Hoy, Janet Kathleen, BA A & L  
 Hudson, Alan Kemp, BS Hist,  
 TF Soc Sci  
 Hudson, Sheila Ann, BS Elem Ed  
 Huff, Ronald Corwin, BS Bus Adm  
 Huffman, Robin Lynn, BA Hist  
 Huffstatter, Lee Vincent, BS Bus  
 Adm  
 Huger, Larry Randolph, BS Bus Adm  
 Hughes, Ann Patricia, BS Art,  
 Grap des  
 Hughes, Melvin R., BS Pol Sci  
 Hugo, Kruev Chafwick, BS Pol Sci  
 Hunt, Margaret M., BS Soc  
 Hunt, Raymond George, BA Math  
 Hunt, Ronald Virgil, BS Bus Adm  
 Hunter, Duncan Bert, BS Soc Sci  
 Hunter, Lisa Beth, BA Soc  
 Hunting, Duane Royer, BS Psych  
 Huntsinger, Thomas James, BS  
 Apl Sci-Eng  
 Hurle, Candace Jo, BA Hist  
 Hutchinson, Sam Edward, BS Apl  
 Sci-Eng  
 Hyder, Luther James, BS Bus Adm  
 Ikeda, Yoshiro, BS Art, pnt & des  
 Iltz, Karen Ann, BA Hist  
 Imharff, Robert Harold, BS Bus Adm  
 Inukai, Carol L., BA Soc  
 Irwin, Elliott Ross, BA Mus,  
 TF Mus  
 Isaacson, Susan Ray, BS Elem Ed  
 Iverson, James Charles, BS Soc  
 Jackson, Barbara Jean Bender,  
 BS Elem Ed  
 Jackson, Stephanie, BS Hist,  
 TF Soc Sci  
 Jueky, Elaine Louise, BA Anth  
 Jacobsen, Linda Marie, BS A & L  
 Jacques, Mike, BS Psych  
 Jacques, Ruth Margaret, BS Elem Ed  
 James, Bettie Joan, BS Soc  
 James, Edgar Neville, BA Hist  
 Janin, Margaret Joan, BS Art,  
 Grap des  
 Jarrett, Paul Steven, BS Soc Sci  
 Jetzmann, J. Christine, BA Art,  
 drw & pnt  
 Jeleniewski, Ronald Michael,  
 BS Bus Adm  
 Jenkins, Dale Allan, BS Bus Adm  
 Jensen, Greg K., BS Biol  
 Jette, Brian Dennis, BS Psych  
 Joergers, James Henry, BS Psych  
 Joergers, Jane Elizabeth, BS Hist,  
 TF Soc Sci  
 John, Lurene E., BS Elem Ed  
 Johns, James Kirtham, BS Pol Sci  
 Johnson, Allen Charles, BA Biol  
 Johnson, Delores J., BS Elem Ed  
 Johnson, Diane Marie, BA F I, Span,  
 TF Span  
 Johnson, Earl Jay, BS Bus Adm  
 Johnson, Gretchen Margret, BS  
 Elem Ed  
 Johnson, Joni Ruth, BS A & L,  
 TF Eng  
 Johnson, Linda Gail, BA Elem Ed  
 Johnson, Loren Edward, BS Bus Adm  
 & Psych  
 Johnson, Michael Demont, BA Eng  
 Johnson, Paula Ann, BA Hist  
 Johnson, Robert D., BA Pol Sci  
 Johnson, Susan Carol, BA A & L  
 Johnson, Willetta Louise, BS  
 Elem Ed  
 Johnston, Robert Lee, BS H & PE,  
 TF H & PE  
 Jones, Linda Lee, BS Hist, PS SSc  
 Jones, Robert Allen, BS Bus Adm  
 Jones, Shelley Suzanne, BS Elem Ed  
 Jones, Terrance Paul, BS H & PE,  
 TF H & PE  
 Jordan, Michael Dean, BS Bus Adm  
 Jordan, Wayne Thomas, BS Bus Adm  
 Jorgenson, Larry Joseph, BA Eng  
 Joy, Ronald Lewis, BS Bus Adm  
 Joyer, Mary Ellen, BS Art,  
 Grap des  
 Jubb, Lawrence David, BS Apl Sci-Eng  
 Judkins, Susan Terese, BS Elem Ed



Junge, Richard Lee, BS Sp & TA, TF Sp & TA

Kubau, Hamad Saud, BA Pol Sci

Kahl, Stephen Y., BS Pol Sci

Kahl, Shawn John, BS Geog

Kaiser, Michael Terry, BS Hst, TF Soc Sci

Kalbrener, William Max, BS Apl Sci-Eng

Kamhoo, Janis Lyn, BS Soc, Law Enfor Cert

Kamm, Mary Jane, BA Biol

Kanipe, Kent Grayson, BS Bus Adm

Kappel, Jesse J., BS Psych

Kusch, Stephen N., BS Biol

Kasch, Stephen N., BS Psych

Kaul, Sharon Louise, BS A & L

Kavanagh, Dennis Michael, BA Soc Sci

Kay, Dennis Michael, BS Bus Admin

Kay, Marilyn Margaret, BS Chem

Kearney, Ronald R., BS Psych

Kern, Edward Shelley, BS Soc Sci

Keerins, David Grantan, BS Chem

Kehm, David Roderick, BS Art: Grap des

Keller, Kathleen Sheehy, BS Elem Ed

Keller, Michael David, BS Art: drw & pig

Keller, Patricia Ann, BS Soc Sci

Kelley James Maurice, BS Chem

Kelley, Robert Lee, BS Soc Sci

Kelly, Brenda M., BA H & PE, TF H & PE

Kelly, Raymond Lee, BS Soc Sci

Kelley, Sonja Dianne, BS Elem Ed

Kelway, Clifford Gail, BS Bus Adm

Kenagy, Jeffrey Lee, BS Bus Adm

Kennedy, Marcella M., BS Elem Ed

Kenny, Mark Howard, BS Psych

Kenny, Thomas Joseph, BS Soc Sci

Kent, Jay Russell, BS Hst

Keys, Christine Cherie, BA Art: drw & pig

Khuthatla, Khalid M., BS Econ

Klukbusch, William John, BS Bus Adm

Killingbeck, Linda L., BS Elem Ed

Kindler, Janice Lynn, BA A & L

King, Charles M., III, BS Soc Sci

King, Dennis Perry, BS Soc Sci

King, Earlene Eby, BS Elem Ed

King, James Thomas, BS Psych

King, Timothy Igoo, BS Bus Adm

King, Willis Wayne, BS Phys

Kingman, Gregory Allen, BA Psych

Kingsfather, Phillip Terry, BS Sci

Kinaer, April Diane, BA Eng

Kirby, John David, BA Bus Adm

Kirk, Gayle G., BS Elem Ed

Kirk, Margaret Ann, BS Art: Grap des, TF Art

Kirk, Richard Chester, BA Eng

Kirker, James T., BS Bus Adm

Kirkland, Joseph Neilan, BS Math, TF Math

Kirkpatrick, Carole Schmidt, BS Psych

Klassen, Robert George, BS Bus Adm

Klein, Friedrich Herman, BA Hist

Klevickis, Patricia Ann, BS Psych & Soc

Kliever, Bradley John, BS Art: Sculp

Kilne, Amy Sue Wood Anderson, BS Anth

Klopfenstein, Gene Art, BS Bus Adm

Klostermann, Ernest Clayton, BS A & L

Klostermann, Karen Kay, BS A & L, TF Sp

Knauss, Christopher Wells, BA Hst

Knoll, James Joseph Jr., BS Elem Ed

Koppen, John Frank, BS Phil & Psych

Korevaar, Teddie Louise, BS Elem Ed

Kornegay, Nancy Orr, BA Eng, TF Eng

Kozydar, Joseph Martin, BS Pol Sci

Kraft, Geraldine M., BS Bus Adm

Kraft, Vickie Lynne, BS H & PE, TF: H & PE

Krage, Roger Lee, BS Sci

Kramer, Michael Sr., BA Eng

Kramer, Russell Dale, BS Chem

Kraushaar, Janet Gail, BS Elem Ed

Krening, James Dale, BS Elem Ed

Kreuder, Thomas Michael, BS Bus Adm

Krogh, John Richard, BS Bus Adm

Kronsteiner, Ida Ruth, BS H Ed, TF H

Krueger, Arnold Richard, BS Soc Sci

Krueger, Karl O., BS Pol Sci

Krueger, Keith William BS & Bus Adm

Kruger, Donald L., BS Bus Adm

Krystosek, Alphonse Paul, BA Chem

Kubar, Bruce Anthony, BS Phys

Kubat, David Alan, BA Phil

Kubin, Irene Jo, BS Bus Adm, TF Bus Ed

Kucera, Frank Joseph, BS Sci, Pub Hlth Cert

Kuaphoff, Kenneth Cecil, BS Pol Sci

Kurth, David William, BS A & L

Kuust, Walter Lee, BS Soc Sci

Kuznik, Brigitte Dorothea Renate, BA Elem Ed

Kylo, Craig Stuart, BS Bus Adm

Laakman, Thomas L., BS Bus Adm

Lacy, Laura Ann, BS Soc

Lage, Ellen Patricia, BA Elem Ed

Lahti, John Marrin, BS Bus Adm

Lahti, Robert S., BS Pol Sci & Psych

Laird, Mina Rae, BS Elem Ed

Laird, Robert Dean, BS Bus Adm

Laird, Sharron Quinn, BS Elem Ed

Lakanen, John H., BS Soc Sci

Lambert, Daniel Lee, BS Soc Sci

Lambert, Phyllis Jean, BS A & L

Lampella, Doris Elaine, BS Elem Ed

Lancot, Gary Edward, BS Soc Sci, TF Soc Sci

Landen, George L., BA Chem

Lane, John David, BS Hst

Langer, Charles Christian, BS Bus Adm

Landgraver, Glenda Cathoun, BS Psych

Lang, Carl Melvin, BS Bus Adm

Langley, Cathy Joann, BS Elem Ed

Langley, Craig Alan, BS Elem Ed

Lansau, Peggy Ann, BA Eng, TF Eng

Larsen, John Lee, BS Math

Larson, Beverly Anne, BS Elem Ed

Larson, Colleen May, BS Elem Ed

Larson, Dennis Edward, BS Soc Sci

Larson, Karen Ann, BS Elem Ed

Larson, Michael Paul, BS Bus Adm

Larson, Peter Alfred, BS Pol Sci

Larson, Sheryl Jean, BA F L Span

Lasater, John A., BS Hst

Lau, Earl Stanley, BS Geog

Laughlin, Richard Matthew, BS Soc Sci

Lauman, Leslie A., BS Psych

Lawless, Kathleen, BS A & L

Lawrence, Richard James, BA F L, Ger Can Eur Stu Cert

Lawrenson, Sharon Lee, BS Art: Pnt & Drw

Lawton, Abigail Morgan, BS Psych Soc Serv Cert

Lea, James Allen, BS Biol

Leach, Loren R., BS Hst, TF Soc Sci

Leach, Maynard Alan, BS Art: Pnt

Lease, Kenneth Bruce, BS Sci

LeBrun, Ronald Scott, BS Sou Law Enfor Cert

Lee, Carol Jean, BS H & PE

Lee, Elton Chee Tung, BS Bus Adm

Lee, Grace Louise, BS Anth

Lee, June Kay, BS Hst

Lee, Kenneth K., BS Elem Ed

Lee, Rodney Allen, BS Anth

Lee, Sharon Jean, BS Sci

Leech, Charles Agusta, BS Soc

Leidecker, Frederick George, BS Pol Sci

Lesch, Judith Ann, BS Elem Ed

Lemley, Samuel Arthur, BS Bus Adm

Leon, Delores Anne Wiwatowski, BS Biol

Leonard, Daniel Dwight, BS Psych

LeRoy, Julie A., BA Hist Cert Eur Stu Cert

LeTourneux, Jean B., BS Elem Ed

Letzkus, Vera Anne, BA Math

Levin, Claude Emergy, BS Bus Adm

Lewis, Jean Louise, BS Elem Ed

Lewis, John C., BS Sci

Lewis, Lois Ann, BS Elem Ed & Psych

Libeck, Diana Sylvia, BA (DM) Eng & F L Fre

Libke, Steven William, BS Bus Adm

Liddell, Robert Philip, BS Biol

Lieske, Joy Elaine, BS Sci

Liggett, Byron John, BS Hist

Lillegard, Stephen F., BS Bus Adm

Lindgren, Helen H., BS Soc Sci Soc Serv Cert

Lindkoff, Udo Arno, BS Soc Sci

Lindley, Cheryl Ann, BS Elem Ed

Lögnob, Joan Elizabeth, BS H & PE, TF H & PE

Litie, Ross Allen, BS Appl Sci-Eng

Litzer, J. Anthony, BA Eng

Lloyd, Don Keith, BA Pol Sci

Loch, John H., BS Bus Adm

Loera, David, BA A & L, TF Soc Sci & Span

Logan, Karen Lynn, BS Elem Ed

Lommen, Joris Oliver, BS Appl Sci-Eng

Long, Michael John, BS Soc Sci

Loose, Charlotte Elaine, BS Pol Sci

Urh Stu Cert

Lopez, Dorothy I., BA A & L

Lorenzen, Margaret Ann, BS Elem Ed

Lorenzini, Michele Diane, BS Elem Ed

Lostrom, Marion Grace, BS A & L

Loutocky, Marie Joanne, BA Eng, TF Eng

Lovelady, John Francis, BS Sci

Lowell, Mara M., BA Elem Ed

Lucas, Donna Jean, BS Pol Sci

Luette, Willard Allan, BS Elem Ed

Lukatz, Maria, BA Psych

Lund, Linda Susan, BS H & PE, TF H & PE

Lund, Nancy Joan, BS Psych

Lundquist, John Milton, BA Hist

Lunt, Donna Mae, BS Elem Ed

Lutz, Patsy Lee, BS Elem Ed

Lutz, Shirley Hedrick, BS Sci

Lutz, William J., BS Phys

Luyben, Diane Marilyn, BA Soc Sci

Lynch, Dorothy Ruth, BS Elem Ed

Lynn, Thomas Frederick, BS Psych

Lynn, Wilma Lorraine, BS Elem Ed

Lynott, Robert Gregory, BS Psych

McAllister, Barbara Lou, BS Elem Ed

McBERRY, Sue H., BA A & L, TF Mus

McCaffrey, Lee, BS H & PE

McCallum, Larry D., BS Geog

McCallum, Thomas George, BS A & L

McCarthy, Michael E., BS Earth Sci

McClelland, Glen Peter, BS Pol Sci

McClymonds, Donna Louise, BS Psych

McCole, Joseph A., BS Bus Adm

McConnell, Kelly Harry, BS Geog

McCord, Cathy Eva, BS Art: Sculp

McCord, Dayle Vivian, BA Eng

McCormick, Barbara Frances, BS Elem Ed

McCoy, Marilyn L., BS Hst T F Soc Sci

McCracken, Leonard Oaman, BS Math

McDermott, John Terence, BA Soc Sci, TF Soc Sci Cert Eur Stu Cert

McDonald, John Paul, BA Eng

McDonald, Sandra J., BS Psych Soc Serv Cert

McDonald, Suzanne Haseltine, BS Elem Ed

McDowell, Piper C. D., BS Hist

McFadden, Colleen Mary, BA Eng, TF Eng

McGarry, Barbara Gail, BS Sci

McGarry, Francis Eugene, BS Biol

McGivra, Rebecca Frances, BS Sci

McGinnis, Rozanne White, BS Psych

McGoldrick, Arieta R., BA Eng, TF Eng

McGraw, Patricia Lynn, BA Elem Ed

Mellugh, Deborah Stewart, BA A & L, TF Sp

Melville, R. Scott, BS Art: Pnt & Drw

McIntosh, James Wallace, BS Soc

McKee, John P., BS Pol Sci

McKee, Yvonne Marie, BA Eng

McKeel, Michael Lynn, BS Sci

McKeown, Eileen Theresa, BS Elem Ed

McKibben, Glenda L., BA Mus, TF Mus

McKown, Mary Ann, BS Biol

McLain, Martin Douglas BS H & PE, TF H & PE

McMichael, Kathleen Yvonne, BS Elem Ed

McMullen, Lotus Lee, BA Soc Sci

McNicholas, Michael Ward, BS Chem

McNicol, Stanley Page, BS Chem

McPherson, Dolores Marguerite, BA Psych

McRobbie, Judith Anne, BS H & PE

McRobert, Raymond Joseph BS Psyc

McSherry, Dale J., BS Psych

McWillis, Stanley Claude Jr., BS Psych

Macy, Wayne E., BS Psych

Maddox, Raymond Earl, BS Psych

Magley, Linda Christine, BA Elem Ed

Magness, Murray Alexander, BS Hist

Majovsky, Jean Ann, BA Eng

Malá, Donald Frank, BS Bus Adm

Malarkey, Mary Gay, BA Eng

Moide, Robert Dean, BS Psych

Malone, Carol B., BA Eng, TF Eng

Molisee, Donald Alexander, BS Soc Sci

Mancini, Nancy A. Whitelaw, BA Soc

Mandio, John Edward, BS H & PE

Mann, Donald L., BS Soc Sci

Mann, Robert George, BS Bus Admin

Mansfield, Timothy Warren, BS Soc Sci Law Enf Cert

Manson, Janet Marilyn, BA Hist

Mantla, Betty Lou, BS Hst

Marasco, Nancy Kay, BA Eng, TF Eng

Marchant, Gary D., BS Pol Sci

Marcum, Helen Candace, BA A & L

Marenstein, Andrea Lynn Olshen, BS Elem Ed

Marion, Roger D., BS Earth Sci

Martha, Joseph Anthony, BS Biol

Marlowe, Keith Leslie, BS Bus Adm

Marriott, Lynn Ann, BS Soc Sci

Marsh, Michael L., BA Eng

Martin, Donnie LeVaughn, BS Psych

Martin, Jerry Wayne, BA Pol Sci Cent Eur Stu Cert

Martin, Roswitha B., BA Elem Ed

Martin, Steven Edward, BS Hist

Martyn, Carol Lynn, BS Elem Ed

Masucci, Mary Louise, BS Sci

Mastny, Sally Louise, BA Soc Sci Cent Eur Stu Cert

Matheson, Donald R., BS Appl Sci-Math



Mathiot, R. Kent, BS Earth Sci  
 Mathis, Jan Hamilton, BA Hist  
 Matt, Edward Allen, BS Soc Sci  
 & Bus  
 Matson, John Walter, BA Chem  
 Matychuk, Penny Ann, BA H & PE,  
 TF H & PE  
 Matfield, Rebecca Lee, BS Elem Ed  
 Matthews, David James, BS Math  
 Mattingly, Susan Irene, BS Elem Ed  
 Mattson, Dorothy Joan, BA Eng  
 Matza, David Aaron, BS Soc Sci  
 Matza, Richard Nissom, BS Bus Adm  
 Mayer, Arthur Gerald, BS Bus Adm  
 Maynard, Susan, BA Eng  
 Mead, James Patrick, BS Sci, TF  
 Gen Sci  
 Meeks, Martha Elizabeth, BS Soc Sci  
 Meese, Gregory Lee, BS Bus Adm  
 Melcher, Diana Lee, BA Art, Pnt  
 & Drw  
 Melott, Ronald Kenneth, BS  
 Appl Sci  
 Nelson, Gail Ann, BS Soc Sci  
 Sery Cert  
 Melvin, Barry Langdell, BS Hist  
 Merlo, Kenney Harvey, BS Psych  
 Merrill, Bernard Nicholas, BS Pol Sci  
 Mersereau, Maureen Elaine,  
 BS Sp & TA  
 Measner, Doreen Beth, BA Soc Sci  
 Meuler, Katherine R., BS A & L  
 Micciche, Douglas G., BS Soc  
 Micciche, Raymond Paul, BS Psych  
 Michaels, Darlene L., BS Soc,  
 TF Soc Sci  
 Mickel, James Allen, BS Bus Adm  
 Mickey, Allen Garth, BS Earth Sci  
 Middelhoven, Wilhelmina Jeanette  
 Aime, BA F L Fre & Ger, TF  
 Fre & Ger  
 Mikongomi, Yusufu Kasela  
 Gayumbile, BA Pol Sci  
 Millard, David Michael, BA Psych  
 Millegan, Margaret Ellen, BS Soc  
 Soc Ser Cert  
 Miller, Debby Lee, BS Elem Ed  
 Miller, Eva Amalie, BA F L Rus  
 & Ger  
 Miller, Gary Ellis, BS Bus Adm  
 Miller, John Hugh, BS Soc  
 Miller, Judith Ann, BS Elem Ed  
 Miller, Linda Kay, BS Soc Sci  
 Miller, Nancy Ann, BA Elem Ed  
 Miller, Robert Joseph, BS Bus Adm  
 Miller, Roberta Gayle, BA Soc  
 Miller, Stephanie Dawn, BA F L  
 Ger & Fre  
 Miller, Stephen Allen, BS Math  
 Miller, Susan Kay Travnick, BS  
 Pol Sci, TF Soc Sci  
 Mills, Dorothy Lynda, BS Soc Sci,  
 TF Soc Sci  
 Mills, Jerry Charles, BS Sci  
 Mills, John Michael, BS Geog  
 Mills, Vicki Lynn, BA Mus, TF Mus  
 Milne, Kenneth Eugene, BS Sci  
 Minnick, Ralph Kenneth Jr.,  
 BS Bus Adm  
 Minoos, Maxoud, BS Math  
 Minto, Robert Keel, Jr., BS Bus Adm  
 Mirich, Jeanette Marie, BS Elem Ed  
 Misch, Cydney Lynn, BS Soc Sci  
 Mischke, Kathleen Hughes, BS Soc  
 Sci  
 Mitchell, Hannelore, BA F L Ger  
 TF Ger  
 Mitchell, Rosie Lee, BA Elem Ed  
 Moor, Dennis Victor, BS Hist  
 Mock, Ellene Janet, BA Elem Ed  
 Mockett, Stephen Paul, BS Psych  
 Moe, Barbara Faye, BS Sci  
 Moe, Loi O., BS Appl Sci-Eng  
 Monahan, Bertha Annetta, BS Art,  
 Psych & Ptg.  
 Monroe, Terry Nolan, BS Sci  
 Monson, Nancy Louise, BS Bus Adm  
 Moody, Suzanne E., BS Art,  
 Pnt & Drw  
 Moore, Charlene Roberia, BS Elem  
 Ed  
 Moore, John C., BS Soc  
 Moore, Nina A., BS Bus Adm  
 Moore, Richard A. Jr., BS Psych  
 Moore, Sharon Louisa, BA Pol Sci  
 Moore, Timothy Edward, BA F L  
 Fre  
 Moothart, Sheryl Ann, BA Elem Ed  
 Moreland, Margaret W., BS Bus Adm  
 Morrill, Edith Luella, BS A & L  
 & Psych  
 Morris, Kent Jr., BS Bus Adm  
 Morris, Randy Ray, BS Bus Adm  
 Morton, Linda May, BS Elem Ed  
 Mortenson, Craig Frank, BS Bus  
 Adm  
 Moss, David LeRoy, BS Sci  
 Moultrie, Frederick Leonard,  
 BS Elem Ed  
 Moxley, Rodney Lavern, BS Pol Sci  
 Law Enf Cert  
 Mroczynski, Maria Louise, BS Art,  
 Pnt & Drw  
 Muffley, Robert Venner, BS Sci  
 Muhler, Gretchen Lowell, BA Soc  
 Muhler, Penny April, BS Elem Ed  
 Mulder, Jan Jacob, BA Eng  
 Muncy, Gary James, BS Pol Sci  
 Munly, Marilyn Ann, BS Elem Ed  
 Munoz, Judith Ann, BS Soc Sci  
 Munson, Susan Hale, BS Elem Ed  
 Murphy, Pamela Ann, BA Psych  
 Musmanský, Ann Cairney, BS Elem  
 Ed  
 Myers, Teresa Mae, BS Phil, Sp TA  
 Nagashima, William Nobuo, BS Psych  
 Naglee, William James, BS Geog  
 Napoleon, Louis, BS Hist  
 Naudain, Paul Engram, BS Hist,  
 TF Soc Sci  
 Neal, Mary Jeannette, BS Math  
 Neal, Thomas Frederick, BS Sci  
 Neher, Marilyn Ruth, BS Elem Ed  
 Nehring, Richard Bryant, BA F L  
 Rus  
 Neighorn, David Roy, BS Bus Adm  
 Nelson, Robert Henry, BS A & L  
 Nekerin, Nadene Mason, BA Elem  
 Ed  
 Nelson, David L., BS Sci  
 Nelson, DiAnna Maureen, BS Art,  
 Pnt & Drw  
 Nelson, Gary A., BS Phys  
 Nelson, Jon Frederic, BS Art,  
 Grap Des  
 Nelson, Nancy Ann, BS Elem Ed  
 Nelson, Raymond Denny, BS Psych  
 Nelson, Susan Lee, BA F L, Fre  
 Nelson, Vernon Gene, BS Psych  
 Ness, Candy Jean, BS Elem Ed  
 Newman, Richard Jackson, BS Math  
 Newton, Frederick Douglas, BS  
 Bus Adm  
 Newton, Robert Dean, BS Bus Adm  
 Nicoll, Joan Kay, BA Elem Ed  
 Nichols, John Thomas, BS Hist  
 Nichols, Nancy Louise, BA Eng  
 Nicholson, Beverly Ann, BS Pol Sci  
 Nicholson, Marilyn Kay, BA A & L  
 Nicholson, Michael James, BS Bus  
 Adm  
 Nickerson, Joyce Elizabeth, BS  
 Soc Sci Soc Serv Cert  
 Nicol, George Arthur, BS Math  
 Niedermeyer, Roger Joseph,  
 BS Hist  
 No, Nguyen van, BA Elem Ed  
 Noe, Sarah Louise, BA Art, Pnt  
 Nolan, Leslie Marian, BA F L, Fre  
 Noland, Gary Mack, BS Bus Adm  
 Noland, Judith Ann, BS Hist  
 Noland, Amanda Caroline, BS  
 Elem Ed  
 Nordby, Curtis Tyrone, BS Psych  
 Nordness, Jeff W., BS Bus Adm  
 Norris, Richard John, BA Hist  
 North, Carolee Ann, BS Elem Ed



Richards, Carole A., BS Elem Ed  
 Richards, Donald P., BS Pol Sci  
 Richards, Nadine Clothier, BS H & PE, TF H & PE  
 Richardson, Ernest E. Jr., BS Hist  
 Rickman, Gayle M., BS Bus Adm., TF Bus Ed  
 Ridenour, James Warrick, BS Pol Sci  
 Riddell, Terry L., BS A & L  
 Ridgley, Victoria Lynn, BA Eng  
 Riley, Margaret Ann, BA Math  
 Ritzer, Paul Clair, BS Psych  
 Robb, Lawrence Lloyd, BS Hist  
 Robbins, Cynthia Lorraine, BS Psych  
 Robbins, William Henry III, BS Bus Adm  
 Roberts, Robert Allen, BS Soc Sci  
 Roberts, Tim Arden, BS Biol  
 Robinson, Anita Sharon, BS Elem Ed  
 Robinson, Esther Kay, BA Elem Ed  
 Robinson, Frank Allen, BS Bus Adm  
 Rodman, Michael R., BS Phys  
 Roehm, David Lee, BS Hist  
 Rogers, James Lewis, BS Soc  
 Rogers, Linda Kay, BS Bus Adm., TF Bus Ed  
 Rodgers, Lonny, BA Eng  
 Rodgers, Susan Payne, BA Eng  
 Rogers, Michael Ferrero, BS Soc  
 Rogers, Patricia, BS Hist  
 Rogers, Roy Robert, BS Bus Adm  
 Roome, Cameron Charles, BS Art, Grap Des  
 Root, Ronald Arthur, BS Sci  
 Rosenthal, Richard Irving, BS Hist & Pol Sci  
 Ross, John Michael, BS Soc Sci  
 Ross, Robert Thomas, BA Art  
 Ross, Susan June, BS Elem Ed  
 Ross, Sylvia Joyce, BS Soc Sci, TF Soc Sci  
 Ross, Teresa Marie, BS Elem Ed  
 Rossi, Stella Emilia, BA F L, Span & Ital  
 Roth, William Robert, BS Bus Adm  
 Rothrock, Helen Sybil, BA A & L, TF Sp  
 Rouxlang, Kenneth W., BA Chem  
 Royse, Gary LaVerne, BS Pol Sci  
 Rozyski, Janusz Zbigniew, BS Bus Adm  
 Rud, Linda Rae, BS Elem Ed  
 Ruderman, Irene Sue, BS Soc Soc Serv Cert  
 Rudolph, Phillip Alexander, BA Sp & T.A.  
 Ruilk, Michael Eldo, BS Psych  
 Rummel, Beverly Ann, BS Psych  
 Rush, Carolyn Jean, BS Hist  
 Russell, Margaret Esther, BS Elem Ed  
 Russell, Ronald S., BA Bus Adm  
 Ruth, Donna Sue, BA Elem Ed  
 Ruthruff, Ronald Wayne, BS Pol Sci  
 Ryan, Robert Murphy, BS Appl Sci  
 Rytting, Arthur James, BS Soc Sci Mid East Stu Cert  
 Sabre, Lynnette, BA Eng  
 Sacia, Joan M., BA Soc  
 Saezyjande, Ruben J., BS Sci  
 Salmien, Catherine Helen, BA Mus  
 Salberg, Mary Lou Saville, BS Elem Ed  
 Salmonese, Tony Louis, BS Sci  
 Salve, Maurice Kelly, BS Psych Soc Serv Cert  
 Sanson, Klerh Samuel, BS Appl Sci  
 Sanchez, Karen Hollander Goodall, BS Hist  
 Sandberg, Ellen Jean, BS Sci  
 Sandberg, Mary Cryder, BS Elem Ed  
 Sander, Stephen Randell, BS Earth Sci  
 Sanders, James Chasley, BS Psych  
 Sanders, Larry Edward, BS Art, Grap Des  
 Sanders, Marilyn Kay, BS Psych  
 Sandvold, Roger Lee, BS H & PE  
 Sang, Richard W., BS Bus Adm  
 Sarr, Lorraine R., BS Elem Ed  
 Sanvitale, Richard Dean, BA Eng  
 Sargeant, Gerald Leroy, BS Appl Sci  
 Sasser, Steven Hatley, BS Art, Pnt & Drw  
 Saunders, David Dennis, BS Psych  
 Sausser, Marcia Louise, BS Art, Pnt & Drw  
 Scanlan, Michael Francis, BS Econ  
 Schaber, Robin Mitchell, BA A & L  
 Schaefer, Charles H. Jr., BS Hist  
 Schalthorn, Naomi P., BS A & L, TF Eng  
 Schatz, Robert William, BA A & L  
 Schedeen, Brinkley James, BS Leon  
 Schendel, Leonard Archer, BS Bus Adm  
 Schenk, Patrick McK., BS Sp & T.A.  
 Scherlie, John Robert, BS Soc, Urb, Stu Cert  
 Schloeman, Rose Mary, BS Elem Ed  
 Schlosser, Richard James, BS Soc  
 Schmautz, Ann Elizabeth, BS Soc Sci  
 Schmidlin, Betty Jean, BS Soc Sci, TF Soc Sci  
 Schmidt, Gerald Joseph, BS Bus Adm  
 Schmidt, James Arthur, BS Soc Sci  
 Schmidt, Shirley Jean, BS Math, TF Math  
 Schnoor, Gary Bruce, BS Hist, TF Soc Sci  
 Scholtes, Ronald Ray, BS H & PE, TF H & PE  
 Schonstal, Phyllis Marilyn, BS Hist, TF Soc Sci  
 Schubel, William Gary, BS Bus Adm  
 Schuette, Gerald Paul, BS Soc  
 Schuld, Linda Helene, BA A & L  
 Schulz, Joan Frances, BS Elem Ed  
 Schwartz, Daniel Guy, BA Math  
 Schwartz, Robert A., BS Psych  
 Sciarretta, Thomas Noel, BS Bus Adm  
 Seofield, Harold Eugene, BS Bus Adm  
 Sconce, Ralph Willard, BS Bus Adm  
 Scott, Randy Lee, BS Hist  
 Scott, Thomas Arthur, BS Soc Sci  
 Scott, Wendy Lee, BS Bus Adm  
 Seaton, Robert George, BS Soc  
 Seacomperdis, Kru H., BS Sci  
 Sears, Richard Walter, BS Hist  
 Sechler, John Robert, BA Hist  
 Sedell, Steven Hendrix, BS Math  
 Seelley, Duane Stewart, BS Pol Sci  
 Sehon, James Elwood, BS Soc  
 Selbert, Carol Ann, BS Elem Ed  
 Sekne, Rick Frank, BS Psych  
 Selby, Robert Perl Jr., BS Art, Grap Des  
 Sellers, James Jay, BS A & L  
 Semling, James Everest, BS Psych  
 Senn, Constance June, BA Art, Grap Des  
 Serros, Diane Lyn, BS Elem Ed  
 Shaffer, Larry Eldon, BS Bus Adm  
 Shaw, John B., BA Psych  
 Shelton, Arden Lou, BA Eng & Soc Sci  
 Shierrieb, Edward Michael, BS Bus Adm  
 Sherwood, Kathlee, BS Soc Sci  
 Shields, Joyce Elaine, BA Art, Pnt & Drw  
 Shipp, Luana Lou, BS Pol Sci  
 Shirley, Diane Elizabeth, BS Elem Ed  
 Short, Stephen E., BS Pol Sci, TF Soc Sci  
 Shouki, Ibrahim Mohammed, BS Econ  
 Shimway, Gloria Lee, BS Elem Ed  
 Sidor, David Roy, BS Bus Adm  
 Sifer, Rodger B., BS Soc Sci  
 Siny, Cataline, BA Soc Sci  
 Simantel, Sharyn C., BS A & L, TF Mus  
 Simon, Morton Jay, BS Soc  
 Simonson, Richard Paul, BS Math  
 Singletery, Leo Morgan, BA Soc Sci  
 Sizemore, William Eugene, BS Soc Sci  
 Skibinski, John P. Jr., BS Sci  
 Skinner, Brad Lee, BS Pol Sci, Urb Stu Cert  
 Skarney, Barbara Garrett, BS Soc  
 Slahetka, Donald Gerard, BS Bus Adm  
 Slater, Harold Allen, BS Pol Sci  
 Slawson, Katherine Patterson, BA Soc  
 Slifman, Nancy Rox, BS Biol  
 Small, Karen Hene, BA Soc Sci  
 Smalley, Douglas Stuart, BS Chem  
 Smart, Evert Craig, BS Chem  
 Smolowski, Paul, BS Bus Adm  
 Smith, Cheryl Ann, BS Elem Ed  
 Smith, Cheryl Lee, BA Eng  
 Smith, Gary Wayne, BS Psych  
 Smith, Gordon Ervin, BS Bus Adm  
 Smith, Grace Carol, BS Elem Ed  
 Smith, Jacquely Marie, BA Elem Ed  
 Smith, James Dudley, BS Bus Adm  
 Smith, Jennifer Jean, BS Bus Adm  
 Smith, Karen May, BA Eng  
 Smith, Ko Dean, BS Biol  
 Smith, Patricia Ann, BA Eng  
 Smith, Veronica Ann, BS A & L  
 Smith, William Ryan, BS Bus Adm  
 Smland, Faith Sharon, BS Elem Ed  
 Snell, Thomas Edward Jr., BS Sci, TF Sci  
 Snider, Lawrence David, BS Soc Sci  
 Snyder, Cheryl Lynne, BS Elem Ed  
 Soesbe, Douglas Brian, BS Sp & T.A.  
 Soft, Hussain A., BS Math  
 Sommer, Brent L., BS Bus Adm  
 Sonnicksen, Scott Thomas, BS Art, Pnt & Drw  
 Soper, Elmer Guil, BS Psych  
 Sorensen, Edwin Leo, BS Pol Sci  
 Sorensen, Ronald Bruce, BS Bus Adm  
 Sorrell, Marilyn Kay, BA Eng, TF Eng  
 Sowles, Douglas Pinkerton, BS Hist  
 Sparks, Carol Lynn, BA Eng  
 Speer, Janet R., BS Anth  
 Speros, Connie Rae, BS Art TF Art  
 Speros, Elisabeth Jane, BA Eng  
 Spohn, Richard Edward, BS Bus Adm  
 Spooner, Paula Margaret, BA Soc  
 Springfield, William Everett, BA Pol Sci  
 Squires, Sharon Rae, BS Bus Adm, TF Bus Ed  
 Srofe, Sandra-Lynn, BS Soc Sci & Psych  
 Stacy, Lowell Edward, BS Sp & T.A.  
 Stafford, Elaine Marie, BA Psych  
 Staley, James Earl Sr., BS Bus Adm  
 Stangell, Nancy Lou, BS H & PE, TF H & PE  
 Stanley, Richard E., BS Hist  
 Starr, C. Kenton, BS Sp & T.A.  
 Starr, Jean Marie, BS Math  
 Staver, Paul Charles, BS A & L  
 Steeck, James, BS Soc Sci  
 Steffen, Jeffrey Charles, BS Bus Adm  
 Steenbock, Mary Louise, BS Hist  
 Steinka, Leadtell Faye, BS Psych  
 Steinarus, Mary Jane, BS Elem Ed  
 Stephens, Thomas Cl., BS Math  
 Stephenson, Wendy-Lee Mary, BS Art, Grap Des  
 Stevens, George Burden, BA Eng  
 Stevens, Robert W., BS Bus Adm  
 Stewart, Dennis Lee, BS Sci  
 Stewart, Gordon Eugene, BS Earth Sci  
 Stewart, Marjorie Ellen, BS Appl Sci  
 Steward, Pamela Anne, BS Math  
 Stiger, Mark Allen, BS Psych  
 Still, Eugene Updyke, Jr., BS A & L  
 Still, Kenneth Kay, BS Biol  
 Stockton, William Hubert, BA Eng, TF Eng  
 Stoffel, Lenore M., BA Soc Sci, TF Soc Sci  
 Stokworthy, Alex T., BA Art, Sculp  
 Stone, Janet Rae, BS H & PE  
 Stone, Jean O., BS H & PE, TF H & PE  
 Stone, Lindsay John, BS Soc Sci  
 Storm, Marijke Roberts, BA Elem Ed  
 Storms, Russell Alan, BS Sci  
 Strait, James C., BS Bus Adm  
 Straver, Chester Albert, BS Bus Adm  
 Strandens, Donald P. Jr., BS Soc Sci  
 Stratton, Steve Elden, BS H & PE, TF H & PE  
 Strihling, Kenneth Alan, BA A & L, TF Mus  
 Strong, Bruce Eugene, BA Soc Sci  
 Strong, Harold Phillip, BS Hist, TF Soc Sci  
 Stamp, Fay LeVal, BS Math  
 Starr, Marsha Ruth, BS Elem Ed  
 Statte, Robert Ross, BS Bus Adm  
 Suessow, Susan Karen, BA Art  
 Suher, Randolph Alan, BS Elem Ed  
 Sullivan, Marlene Ann, BS Math, TF Math  
 Sullivan, Michael John, BS Bus Adm  
 Suran, Allen Duane, BS Bus Adm  
 Susanka, Marjorie Ann, BS Econ  
 Sutter, Paul N., BA Biol  
 Sutton, Robert Eugene, BS Bus Adm  
 Suuameyoy, Alice Jane, BS A & L  
 Swan, Stanley Cooper, BS Bus Adm  
 Swenson, Charles Carl, BS Bus Adm  
 Swick, Paul D., BS Hist  
 Swinford, Thomas Keith, BS Math  
 Swope, Betty Sue, BS Elem Ed  
 Synoground, Frank E., BA Soc Sci, TF Soc Sci, Urb Stu Cert  
 Tablanza, Manuel, BS Sci  
 Tabor, Marjorie Joan, BS Elem Ed  
 Tabor, Ty J., BS Soc Sci  
 Taft, Jana Lee, BS Bus Adm, TF Bus Ed  
 Takechi, Yuko, BS Math, TF Math  
 Takeuchi, Diane Naomi, BS Biol  
 Talbott, Theodore O., BS Anth  
 Tallich, William Leslie, BS Bus Adm  
 Talley, Sarah Katherine, BS Pol Sci  
 Tanabing, Donna May, BS Elem Ed  
 Tarbell, Patricia, BA A & L & F L, Fre, Mid East Cert  
 Tashner, Chester Dale, BS Bus Adm  
 Tate, Denorval Donald, BS Bus Adm  
 Tattorsall, Marnie, BS Bus Adm  
 Taylor, Donald Ray, BS Soc Sci  
 Taylor, Steven Duane, BS Pol Sci  
 Teeny, Dave Sergeant, BA Soc  
 Teaschner, Kenneth Darald, BS Hist  
 Thelen, Valentine L., BS Pol Sci  
 Thies, David Quinton, BS Soc  
 Thinh, Tran, BA Elem Ed  
 Thoenes, Ivan George, BS Bus Adm  
 Thomas, Colonel Francis, BS Elem Ed  
 Thomas, Robert Carl, BA Hist  
 Thomas, Thais Kathleen, BS Elem Ed  
 Thomson, Richard James Jr., BS Bus Adm  
 Thorpe, Charles E. Sr., BS Bus Adm  
 Tice, Elizabeth Dec, BA Math  
 Tipton, Mary Patricia, BA Elem Ed  
 Todd, John Wesley, BS Appl Sci  
 Tulby, Rebecca Sue, BA Biol  
 Tom, Teddy Beryl, BS Math  
 Tomkins, Gordon D., BS Bus Adm  
 Tompkins, Karen A., BS Art, Grap Des  
 Toney, William Craig, BS Art, Pnt & Drw



Crenshaw, Shirley Jeanne, MST  
Soc Sci

Crisp, George Thomas, MST A & L

Cundiff, Walter Fountain, MST Gen  
Sci

Curtis, Colleen Joy, MS Ed

Danner, Miriam Ann, MA Eng

Darwish, Madiha Ahmed, MA Hist

Davis, J. Ronald, MA Math

Davis, Michael Dewey, MS Psych

Davis, Ronald R., MA Eng

Day, Carolyn Mae, MS Ed

Deery, Mary Marcheta, MST Bus Ed

Deichmann, F. Arthur, MS Ed

DeLelle, Judy Lee, MS Ed

DeMetry, James Peter II, MA Pol  
Sci

deVries, Linda JoAnn, MS Ed

Dhindsa, Harbans Singh, MST Elem  
Ed

Dillon, Helen Carole, MS Ed

Dimick, Jean Irene, MS Ed

Dixon, Joan Elizabeth, MS Ed

Doden, Imogene Moats, MS Ed

Doelman, Nelson Paul, MST Gen  
Sci

Dombrowski, Eugene Zbyszko, MST  
Math

Douglas, Prudence, MA Eng

Dowling, Ruth Hughes, MST A & L

Downey, Troy J., MA Math

Dunis, Helen Elizabeth, MS Ed

Edelbrock, Patricia Louise, MS Ed

Eert, Robina Frances, MAT Soc Sci

Ehlen, Cathie Norma, MST Soc Sci

Ellis, Joseph Dennis, MST Geog

Ellis, Ludmilla, MST Soc Sci

Enfield, Gene LeRoy, MST Math

Engel, Martin Douglas, MST Math

Engelhardt, Dieter Helmut, MA  
German

Engert, Karl Hans Guenther, MS  
Appl Sci

Enzler, Denise Peyralons, MAT  
French

Estberg, Eva Mary, MS Ed

Evans, Edwin Rodney, MS Ed

Evanston, Claudia Alma, MS Ed

Fajardo, Angel E., MS Appl Sci

Falkenstein, Lynda M., MST Soc  
Sci

Farag, Nadia Raouf, MA Pol Sci

Farrier, Kenneth Edward, MS Appl  
Sci

Ferrero, Roberto, MST Math

Ferrier, Kent Alan, MS Ed

Ficken, Robert Edwin, MA Hist

Finck, Celia Mae, MAT Eng

Finster, Faenell, MAT Eng

Fisher, Shirley Ann, MS Ed

Fitzgerald, Robert Duane, MS Ed

Flaid, Betty Jane, MS Ed

Floyd, Robert Nichols, MST Soc Sci

Foss, Chamberlain Lambros, MS  
Appl Sci

Fogarty, Michael Steven, MS Econ

Folkerts, Alfred George, MST Gen  
Sci

Ford, Charles Thomas, MS Math

Ford, Lawrence Charles, MS Math

Fox, Mary E., MST H & PE

Freder, Patricia Anne, MST Elem  
Ed

French, David Quentin, MST Art

Frost, Norma Ruth, MST Soc Sci

Funk, Dianne Mary, MS Ed

Gann, JoRita, MST T A

Gaisner, Richard Harry, MBA

Gentry, Patricia Leslie, MS Ed

Giannini, Peter Weston, MAT T A

Gibbs, Donald Alban, MS Soc

Gillespie, Patrick Allen, MST Soc  
Sci

Gilmore, Theonie T., MST Music

Gimbal, Michael James, MS Biol

Glawe, Paul Anthony, MBA

Godwin, Jeanne, MA Eng

Goe, Mildred B., MS Ed

Goertz, Michael Charles, MST  
Speech

Goodmonson, Courtney Weldon,  
MS Psych

Goodwin, Ronald Gerald, MST Geog

Gordon, Margaret Jean, MS Ed

Graham, Nicholas Stuart, MST Pol  
Sci

Granger, Marlice Ana, MST Bus Ed

Graves, Mack Hylan, MBA

Grimsted, Ted Almon, MS Ed

Grina, Michelle Erin, MST Soc Sci

Gullion, John Wayne, MST Geog

Gutknecht, Alice Miyoko, MST  
Bus Ed

Gygi, Carole, MS Psych

Hagerman, Neil G., MS Ed

Hall, John Frances, MS Psych

Hall, Patricia Lee, MS Psych

Hamar, Jean Sturtevant, MA Ed

Hamblet, Gary, MST H & PE

Handy, Frank Edwin, MST Art

Hannan, Charles Edward, MST  
Soc Sci

Hansen, Dale L., MS Ed

Hapala, Marlene M., MS Ed

Haroun, Leslie Chandler, MA Ed

Harris, C. Charles, MST Pol Sci

Havens, Donald Francis, MBA

Head, Joan Dicken, MST Gen Soc  
Sci

Hedlund, John Hancock, MBA

Hehn, Olga Regina, MS Ed

Henderson, Suzanne Joan, MAT  
Soc Sci

Hibbard, Robert Vincent, MA Eng

Hibbs, Stephen B., MS Ed

Hieka, Frank C., MS Ed

Hitchcock, Ardis Carolyn, MA Eng

Hoagland, James A., MS Ed

Hoem, Eric Edward, MA Eng

Hoffman, Gene A., MS Pol Sci

Hood, Kellyn N., MS Ed

Huang, Hwa-Lin Virginia, MA Math

Hughes, Carole Ellen, MS Speech

Hughes, William Henry Jr., MS Biol

Hugo, Craig Stuart, MBA

Hundley, Danny Frank, MST Biol

Iki, Teiuke, MS Appl Sci

Ingle, Earl Barton Jr., MST Soc Sci

Iruen, Bassey John, MA Hist

Ivy, Alvie Leo, MST Elem Ed

Jackson, Glen John Reeth, MST  
Hist

Jacobs, Joyce Irene, MS Ed

Jalali, Mohammed Taghi, MBA

Jensen, Joyce A., MA Eng

Jeter, Aubin S., MS Ed

Johnson, Janet Mary Hajer, MA Eng

Jones, Anita Carol, MS Ed

Jones, Jane L., MAT Eng

Jones, Laurence Romaine, MA Hist

Joux, Henri B., MS Appl Sci

Justice, Patricia Kay, MA Speech

Katel, Yvonne Lee, MS Ed

Kaiser, Mel David, MS Ed

Kalherer, Rosemarie A., MA Hist

Kandil, Abdulwahab Mohcen, MST  
Pol Sci

Kappenman, Jerry Lee, MS Ed

Kaufmann, Victor F., MA Eng

Kelly, Bahette Kay, MS Ed

Kennebeck, Carolyn Edith, MST  
Elem Ed

Key, LeRoy Frank, MST Soc Sci

Khiem, Hoang Ngoc, MAT Bus Ed

Kilgore, Troy O., MS Ed

Kimboko, Andre, MST Geog

Knapp, Richard O., MS Ed

Knight, Donald Glenn, MST H & PE

Knight, John Julie, MS Ed

Kornegay, Michael Ray, MS Ed

Lambert, Louis Edward, MST  
H & PE

Landi, Carolyn Kitzie, MA Ed

Lange, Donald Edward, MS Psych

Lang, Gloria Paz, MS Ed

Larsen, Enid Virginia, MST Speech

Laws, Donald Alan, MS Pol Sci

Laws, Ruth Louise Knight, MST  
Elem Ed

Lawson, Theodore Earl, MST Speech  
& TA

Lazere, Jane Phyllis, MS Speech

Lee, George G., MBA

Lee, Margaret C., MST A & L

Lee Phyllis S., MS Ed

Leith, Helen Louise, MS Ed

Leong, Lawrence Shing Chung, MBA

Levy, Roberta Fields, MS Ed

Lewis, John Boyd, MA Biol

Licht, Robert Arthur, MST Math

Lightowler, John William, MBA

Lillie, Ida Mae, MST Bus Ed

Lindell, Marie S., MS Ed

Lind, Sally Kathleen, MST Gen Sci

Lindstrom, Nina Lucille, MS Ed

Lino, Carl John Jr., MA Ed

Long, Donald E. Jr., MA Eng

Loewen, Donna Sue, MS Speech

Lowe, Larry Stephen, MBA

Lucas, Thomas J., MS Econ

Luca, David Lawrence, MA Physics

Luchinger, Donald Francis, MS Ed

Lund, Donald Gene, MS Ed

Lundgren, Ruth Miriam, MA Eng

Lutes, Katherine Horton, MS Ed

Lyden, Penelope Karen, MST Geog

Maax, Henry Jr., MS Ed

McAleer, Norma C., MS Speech

McCabe, Maureen Breheny, MAT  
Spanish

McClure, Miriam Grace, MA Soc

McCollister, Russel E., MS Ed

McDonald, Kenneth Lyle, MS Ed

McDonald, Mary Ruth, MS Ed

McKroy, Edward Bruce, MBA

McGinnis, Donald Lawrence, MA  
Ed

McGowan, David B., MS Econ

McKay, Donald G., MS Ed

McKedy, Janie Lee, MST Speech

McKie, Ernest L., MS Ed

McLaughlin, Del Duane, MA Eng

McMacken, Larry Michael, MS Ed

McQueen, Mary Best, MS Ed

McLean, Hugh Alan Jr., MA Math

Malbon, Mavis Louise, MS Ed

Marey, Frank L., MS Ed

Marmaduke, Mary Ellen, MST Gen  
Sci

Martens, Niles Brian, MST Ed

Martin, Becky Prinz, MS Ed

Martin, Mary Ellen, MS Ed

Matousek, Eva Jean, MS Ed

Matzies, L. Marie, MST A & L

Matson, Jerry Alan, MA Pol Sci

Mattlef, Robert S., MBA

Mauck, Michael Stewart, MS Physics

Meadows, Lorraine Roseano, MS Ed

Merriman, Larry Michael, MS Ed

Mesplay, Madeline Lee, MS Ed

Miles, Albert Douglas, MS Ed

Miller, Alan William, MS Ed

Miller, Gordon Charles, MS Ed

Miller, Richard David, MST H & PE

Miller, Shirley Lorraine, MST Biol

Miller, Yelma Grace, MS Ed

Mines, Penny, MST Bus Ed

Minnix, Robert Wayne, MST Biol

Mittelstedt, Daniel, MS Ed

Mohammad, Zareh, MS Appl Sci

Mahn, Dennis Gayle, MBA

Montgomery, Robert O., MST  
Mus Ed

Moore, Barbara Sarto, MS Speech

Morin, Edward Anthony, MS Ed

Morris, Lambert Joseph, MST Music

Morris, Thomas A., MS Ed

Morrissey, James P., MS Ed

Morrison, Lillian Laverne, MS Econ

Mosher, Vance Clark, MBA

Moras, Nikolaos B., MA Pol Sci

Mueck, Garry Charles, MS Ed

Muramatsu, Earl Akira, MST Elem  
Ed

Mutch, Rosalind Jane, MS Ed

Nash, Nancy Peterson, MS Ed

Nelson, Leonard Siegfred, MA Soc

Nelson, LeRoy, MS Ed

Neuman, Dianne Marie, MS Ed

Newcombe, Lorna Helen, MST Speech

Nordling, George D., MST Geog

Nordyke, Darrell F., MS Ed

Norris, Diane Karen, MS Ed

Nuss, Wayne D., MA German

Obert, David Eugene, MS Ed

O'Brien, Edward Peter, MS Ed

Oerding, Walter F. Jr., MST Soc Sci

Oka, May, MST Bus Ed

Olsen, Robert Joseph, MBA

Olson, Robert Louis, MST H & PE

Orr, Mary Jo, MS Ed

Orlund, Robert Lee, MS Ed

Parker, Wayne N., MST Soc Sci

Parson, Jean E., MST Econ

Patton, Candace, MS Ed

Payne, Gregory Harold, MBA

Pederson, Judith Elaine, MS Ed

Pepworth, Janet Kaye, MAT Pol Sci

Perrelli, Alan Lee, MBA

Perron, Evangeline Leonora, MST  
Art

Peters, Susan Kay, MAT Eng

Peterson, Robert Allen, MBA

Petersen, Walter Anton, MS Appl  
Sci

Pierce, Gwendolyn Marie, MA Auth

Pipatanangkura, Pranod, MST Gen  
Sci

Poag, James Edward, MA Eng

Pompe, Diana Yustina, MAT Eng

Prait, Flora Althea, MS Ed

Price, Susan Dubois, MS Ed

Primiano, Michael James, MS Appl  
Sci

Preutti, Dolores Marie, MS Ed

Prutti, Joy E., MS Ed

Purnam, Genevieve Agnes, MS Ed

Rager, Paul Francis, MS Ed

Rakas, Anthony John, MS Ed

Ransom, Patricia Louise MA Eng

Reiche, Kaaren Kay, MST Hist

Remly, Marilyn Gale, MST A & L

Rittenbach, Shirley Ann, MS Ed

Robbins, Wayne Richard, MS Ed

Robertson, Linda Koenig, MST  
Bus Ed

Robinson, Michael Farr, MST Biol

Roiddy, Arthur A., MS Ed

Rohrback, Stephens Clyde, MST  
Soc Sci

Roning, James E., MBA

Rosenwinkel, Heather Gad, MA  
Art

Rossi, Mary R., MST Elem Ed

Rucker, Esther Lois, MS Ed

Ryder, Jon C., MS Psych

Ryziogi, Margaret Lynn, MS Ed

Saad, Lola Erian, MAT T A

Sachtler, Jeffery Mark, MS Ed

Sahagian, Richard, MST Bus Ed

Sargent, Susan Margaret, MA Eng

Sato, Ann Schroeder, MA Soc

Saunders, Russell E., MBA

Scarce, Robert J. Jr., MST Gen Sci

Schafer, Robert L., MST Soc Sci

Schmidt, Patricia Ann, MS Ed

Schmitt, Louis Alfred, MBA

Schneider, Carole A., MS Ed

Schooler, Joan LaVerne, MAT  
Speech & TA

Schulte, Janet, MA Ed

Schunk, Illa B., MS Ed

Scott, Jeffery Dean, MS Ed

Scott, Penny Ann, MS Ed

Seely, Anita F., MS Ed

Shadon, Betty Jean, MST Gen Sci

Shelton, Cecile K., MS Ed

Shen, Chang Min, MS Physics

Sherman, Marguerite, MS Ed

Sherrill, Samuel Edward, MA Eng

Shleifer, Stuart, MBA

Shockey, Linda Lue, MS Ed

Siegner, Sandra J., MS Biol

Rimandel, David Allen, MS Econ

Simon, Michael Joseph, MS Biol  
Simpson, Barbara Jean, MST  
Spasen  
Stavage, Carol Ann, MS Ed  
Stingerland, Jackson Edward Jr.,  
MS Math  
Smith, Elizabeth Price, MST Speech  
Smith, Esther Lou, MST Elem Ed  
Smith, Leslie Morton, MST Soc Sci  
Smith, Wanda M., MST Bus Ed  
Smolaski, Carole Jean, MA Hist  
Snively, Jane Louise, MS Biol  
Soumakil, Paul Otto, MA German  
Stachelrodt, Judith Crockett, MA  
Eng  
Stafford, Richard Allen, MS Ed  
Staver, Jane Hanawalt, MS Ed  
Steen, Charles Freeland, MS Physics  
Stewart, Elton L., MS Speech  
Stokes, Julius Foster, MST Hist  
Stommel, Jean Kuczmarzki, MA Eng  
Struble, Robert A., MS Psych  
Struble, Russell E., MBA  
Sugges, Peter Richard Jr., MBA  
Susak, Don J., MST Bus Ed  
Sutton, Robert Kent, MA Hist  
Suzumura, Kenji, MS Ed  
Takehara, Yoji, MBA  
Tan, Tran Thi Thunh, MS Ed  
Tanke, Marilyn Jean, MS Ed  
Taylor, Craig David, MS Biol  
Taylor, Nelson Kirk, MBA  
Thelin, Carolyn Joanne, MST Soc  
Sci  
Thompson, Carolyn Bush, MS Math  
Thompson, Janet Lee, MST Soc Sci  
Thompson, Paul Anthony, MST H  
& PE  
Thompson, Victor Wayne, MST Soc  
Sci  
Tokerud, Douglas Roy, MS Math  
Tolman, Beverly S., MS Ed  
Townsend, Anne Harriet, MA Ed  
Tracy, Mary Ellen, MS Chem  
Turbyfill, Faye M., MS Ed  
Turnbull, Glenda Lou, MS Ed  
Turowski, Alice Marie, MS Ed  
Untalan, Leonisa B., MS Ed  
Upchurch, Flouise K., MST H & PE  
Uris, Joseph Samuel, MA Soc  
Valeos, Shirley Ann, MS Ed  
Vancil, Robert Marvin, MST Hist  
Van Valkenburgh, Star E., MA Eng  
Van Woerkom, David Dean, MS Appl  
Sci  
Vaughan, E. A. P. Crownhart,  
MA Hist  
Voiss, Colleen M., MS Ed  
Wadsworth, Frank Charles, MS H  
& PE  
Wagner, Elizabeth Tracy, MS Ed  
Ward, Sharon Diane, MS Ed  
Watkins, Jeffrey N., MA Eng  
Wayland, Russell James, MS Math  
Weaver, Judith Wisdom, MS Ed  
Webb, James David Jr., MS Ed  
Weber, Gary L., MST Hist  
Weber, June S., MA Eng  
Weeks, Patricia Diane, MS Chem  
Weichel, Erwin, MA Biol  
Weiler, John Lee, MAT Soc Sci  
Wells, Carlos Dwayne, MS Ed  
Wells, Wanda Evelyn, MST H & PE  
West, Sue Anne, MA Eng  
Welle, Terrie Colleen, MS Psych  
Wheeler, Katherine Norcross,  
MA Eng  
Wheeler, Patricia Louise, MS Ed  
Whipps, Robert Edward, MST Geog  
White, Bill Von, MST H & PE  
White, J. Max, MST Math  
Whiting, Judith Ann, MST A & L  
Wiesenhöfer, Jutta Cecilia, MS Ed  
Whittaker, Jacqueline Marie, MS Ed  
Wilbur, LeRoy Dawson, MS Ed  
Wilcox, John Dale, MS Ed  
Williams, Robert Edmond, MA Hist  
Williamson, Walter Thomas III,  
MBA

Wilson, Roberta Pearl, MA Eng  
Wipert, Mary Ellen, MST Gen Sci  
Wittke, Helen B., MAT Soc Sci  
Wollaston, John Dallas, MST Elem Ed  
Kiem Ed  
Woolbright, Wesley L., MST Math  
Wong, Yeng Pul, MS Chem  
Wood, Karen Gay, MS Ed  
Wooten, Thelma C., MS Ed  
Wurm, Mary Ellen, MS Ed  
Yahia, Mohamad Nabil, MA Econ  
Yarnell, Susan Diane, MA Ed  
Zareh, Mohammad, MS Appl Sci  
Zylstra, Marilyn Bernice, MST Math

## MASTERS OF SOCIAL WORK

Anderson, James Allen  
Bakke, James Floyd  
Bateman, Dorothy E.  
Booth, Eugene Fletcher  
Braden, Robert P.  
Comte, Michael Allen  
Copeland, Sharon Jessie  
Curry Kathryn S.  
Engle, Janet K.  
Erickson, Norma Jean  
Fenske, Helen L.  
Ferguson, Clyde Curtis  
Finley, Constance Louise  
Fraser, Mary Lee  
Fry, Robert M.  
Grant, Sister Helen Paula  
Griffith, Barbara M.  
Hack, Gladys Eleanor  
Hardy, Ruth P.  
Herrera, Jean Evelyn  
Herrera, John P.  
Hogan, Bonnie Anne  
Hughes, John Dennis  
Jernigan, Kay F.  
Kaeser, Linda Arterburn  
Kelley, Sandra Lee  
Lester, Loretta Maude  
Lieber, Lois  
Linkous, Courtney H.  
McGonigle, Constance  
Mosser, Priscilla Alexander  
Murphy, Eileen Marie  
Myers, Lane Alan  
Norman, Susan Ellen  
Olds, G. Christine  
Olson, Glenn Edwin  
Panky, Iris  
Peterson, Virginia T.  
Rinderknecht, Lillian Marie  
Rotoux, Efrassini  
Schmitz, Rosalie  
Sims, Patricia  
Steffen, Daryl Duane  
Storch, Richard Gary  
Terry, Elva June  
Todd, William Joseph  
Van Lydergraf, Earl J.  
Warner, Gerald Eugene  
Welman, Alison Fry  
Williams, Alan Scott  
Wills, John McCall  
Winningham, L. Eugene  
Wolffington, Homer Arthur  
Wood, Jo Ann  
Green, Charissa Elane, Urb Stu Cert  
Haynes, Andrew Benjamin Jr., Urb  
Stu Cert  
Price, Marvin James, Urb Stu Cert





*EDITOR*

*Gary Shuler*

*STAFF*

*Mike Coughlin, Rufino Flores,  
Judi Gebhardt, Barbara Hejtmanck,  
Craig Hickman, Ann Hughes,  
Allen Toman, Bev Walton*

*SPECIAL THANKS*

*Douglas Babb, Dick Bakken,  
Steve Nicholls, Larry Smith,  
Mike Spurlack, Sue White,  
Bruce McGillivary*

*ADVISORS*

*Donald Guimary  
Wilma Morrison*



INTERSTATE 5 INTERSTATE 80N EAST  
← To Freeways



Broadway Dr.  
Council Crest ↑  
Barbur Blvd.  
Riverside Br.  
Hospitals

NO PARKING  
ON THIS BLOCK

NO PARKING  
ON THIS BLOCK







wikiNG 10

