

Portland State University

PDXScholar

Forest Collaborative Research

Economics

11-23-2019

Forest and Health: China Case

Shilei Liu
Peking University

Jintao Xu
Peking University

Follow this and additional works at: https://pdxscholar.library.pdx.edu/fc_research



Part of the [Environmental Policy Commons](#), and the [Forest Management Commons](#)

Let us know how access to this document benefits you.

Citation Details

Liu, Shilei and Xu, Jintao, "Forest and Health: China Case" (2019). *Forest Collaborative Research*. 26.
https://pdxscholar.library.pdx.edu/fc_research/26

This Fall 2019 Meeting Presentation - Bogotá, Columbia is brought to you for free and open access. It has been accepted for inclusion in Forest Collaborative Research by an authorized administrator of PDXScholar. Please contact us if we can make this document more accessible: pdxscholar@pdx.edu.

Forest Collaborative 2019

Forest and Health: China Case

Shilei Liu and Jintao Xu

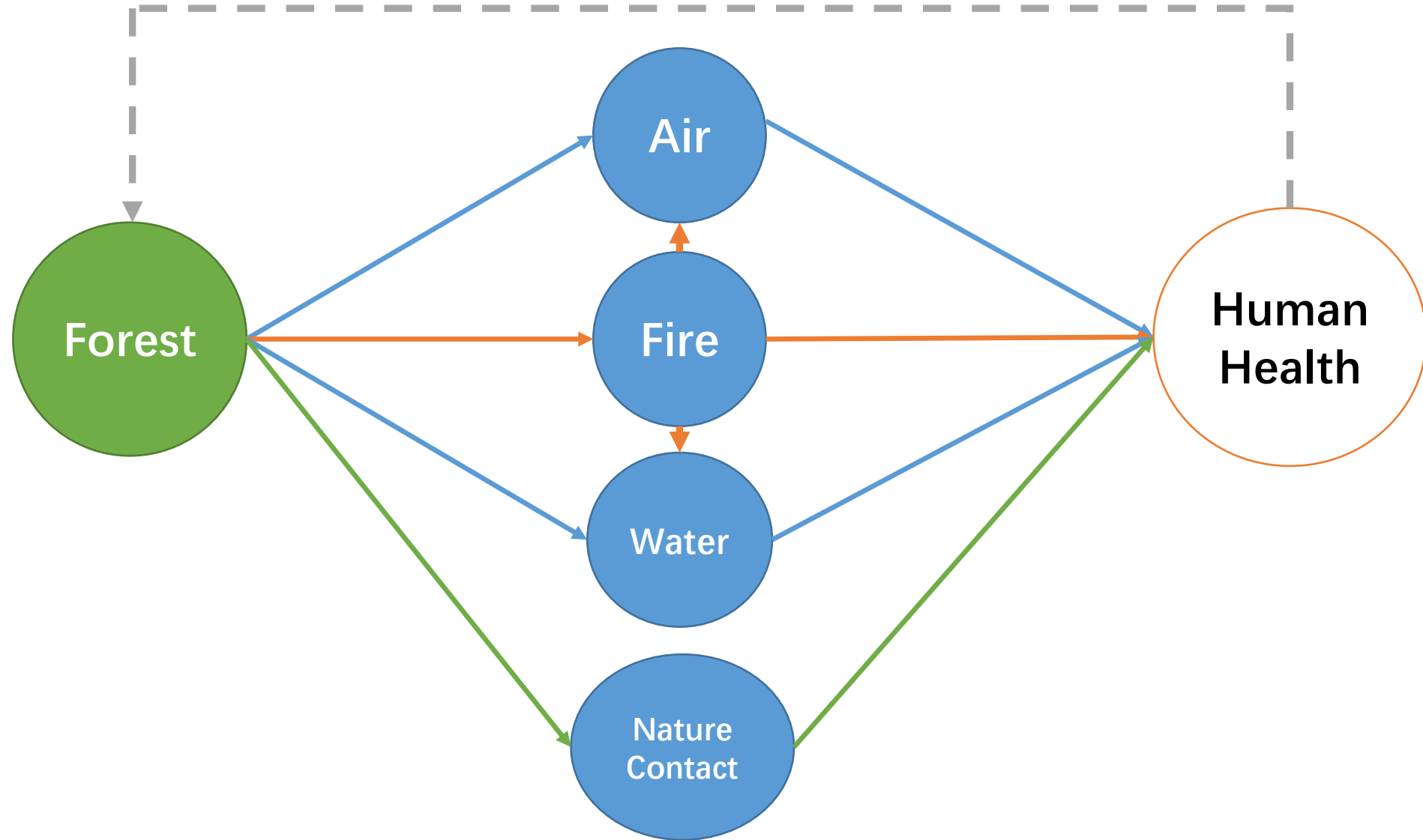
National School of China, Peking University

2019/11/23, Bogota, Colombia

Motivation

- China organizes and encourages afforestation and forests protection through different programs
- There have been increasing concerns about the impacts of ecosystem change on human health
- The causal links between afforestation, forests protection and human health are unclear

Potential Channels between forest and human health



Data about Forest in China

| Data | Full Name | Information | Source | Data Level | Duration | Sample Size |
|------------|-----------------------------------|--|--------------------------------|--------------------------------|---|-------------|
| NFI (I) | National Level Forest Inventory | land types; vegetation types; forest classification; topography; soil conditions; forest structure; forest health; biodiversity; land-use change | State Forestry Administration | Plot-Level (all over China) | 1973-1976 1977-1981 1984-1988 1989-1993 1994-1998 1999-2003 2004-2008 2009-2013 2014-2018 | 415000 |
| NFI (II) | Provincial Level Forest Inventory | land types; vegetation types; forest classification; topography; soil conditions; forest structure; forest health; biodiversity; land-use change | Provincial Forestry Department | Plot-Level (all over China) | once for one decade differ from province to province | uncertain |

Data about Air and Water in China

| Data | Source | Number of monitoring points | Data Level | Variables | Duration | Region |
|--------------------------|-------------------------------------|-----------------------------|------------------------|---------------------------------------|--------------------------|-----------|
| Air Quality Monitoring | Ministry of ecology and environment | 2100 | Monitoring Point-Level | PM2.5; PM10; O3; SO2; NO2; CO; AQI | 2003 to present (hourly) | all China |
| Water Quality Monitoring | Ministry of ecology and environment | 2767 | Monitoring Point-Level | COD; NH3; PH; Permanganate Index; WQI | 2004 to present (weekly) | all China |

Data about Human Health in China

| Data | CHNS | BMIP | CHARLS | CFPS |
|---------------------------|--|---|---|---|
| Full Name | China Health and Nutrition Survey | Basic Medical Insurance Program | China Health and Retirement Longitudinal Study | China Family Panel Studies |
| Information | work; income; smoking and drinking; physical activities; health service and disease history; diet; eating disorder | transaction information; personal information; hospital information; drug use information | family; health status and functioning; health care and insurance; work, retirement and pension; income, expenditure and asset | economic activities; education outcomes; family dynamics and relationships; migration; and health |
| Source | the Carolina Population Center at the University of North Carolina and the National Institute for Nutrition and Health | Ministry of Human Resources and Social Security of the People's Republic of China | National School of Development, Peking University | Institute of Social Science Survey, Peking University |
| Data Level | individual-, family-, and community-level | individual-level | individual-, and family-level | individual-, family-, and community-level |
| Variables (Health) | illness; hospital visits; hospital expenditure; diagnosis; health service; disease history; psychological wellbeing | transaction id; medicine id; drug name; Amount; fees | health status; blood pressure; breathing; balance tests; walking speed, etc. | health status; main diseases; hospital visits; hospital expenditure; physical exercise, etc. |
| Duration | 1989 to 2015 | 1998 to now | 2011 to 2018 | 2010 to 2018 |
| Region | 15 provinces | all over China | 150 counties/districts | all over China |

Data from Chinese Center for Disease Control and Prevention(CDC)
(Yearly/Monthly; Open Source: Province-Level; Non-open Source: county-level)

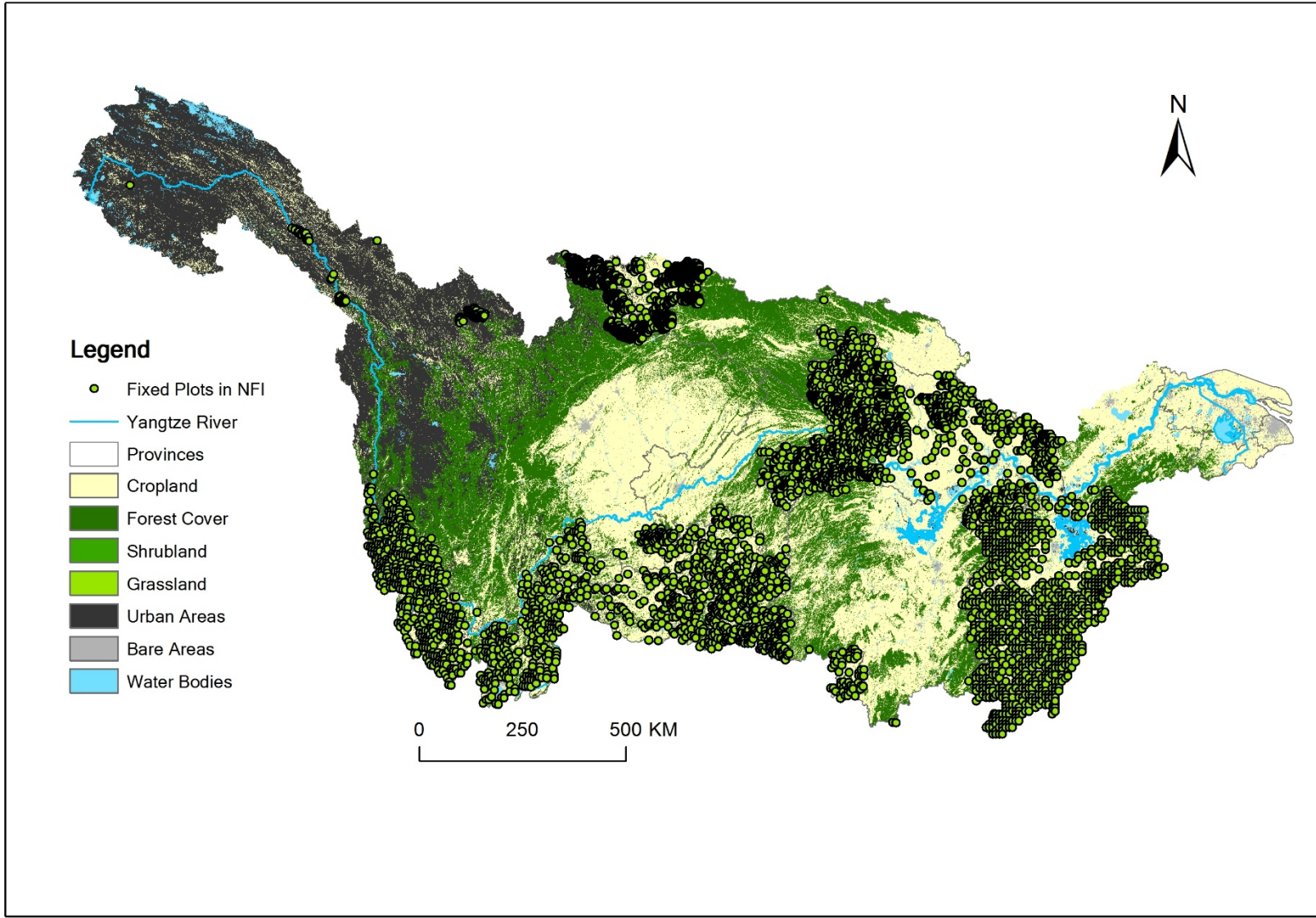
➤ **Infectious Diseases:**

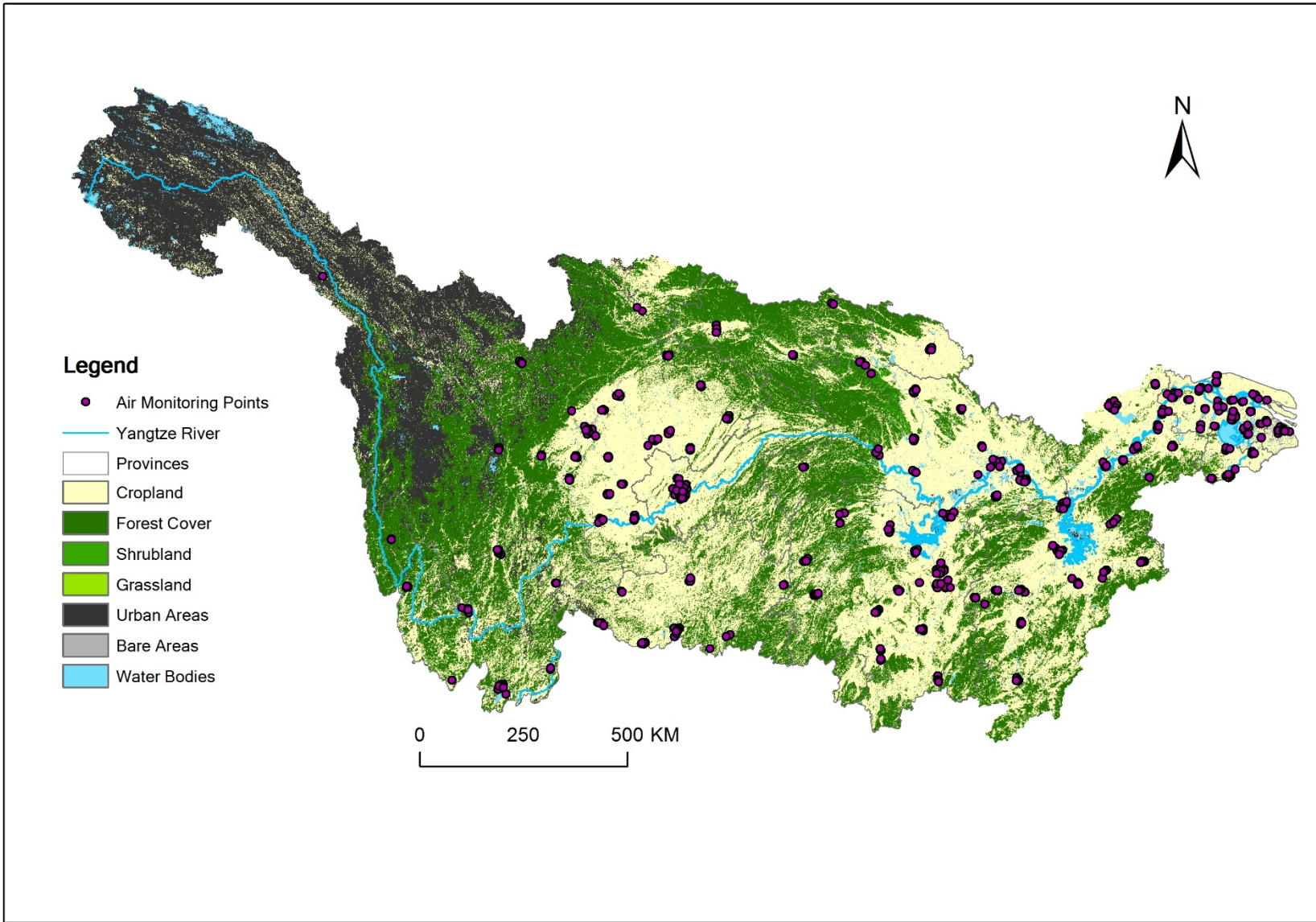
- Intestinal Infectious: Typhoid; Cholera; Hepatitis; Dysentery
- Natural focus and vector borne diseases: Plague; Malaria; Schistosomiasis; Hemorrhagic Fever; Leptospirosis; Rabies; Bird Flu; Dengue
- Blood source and sexual transmission: Gonorrhea; Syphilis; AIDS
- Class C infectious diseases: Schistosomiasis; Rubella; Mumps; Echinococcosis; Filariasis; Leprosy; Hand, Foot and Mouth Disease

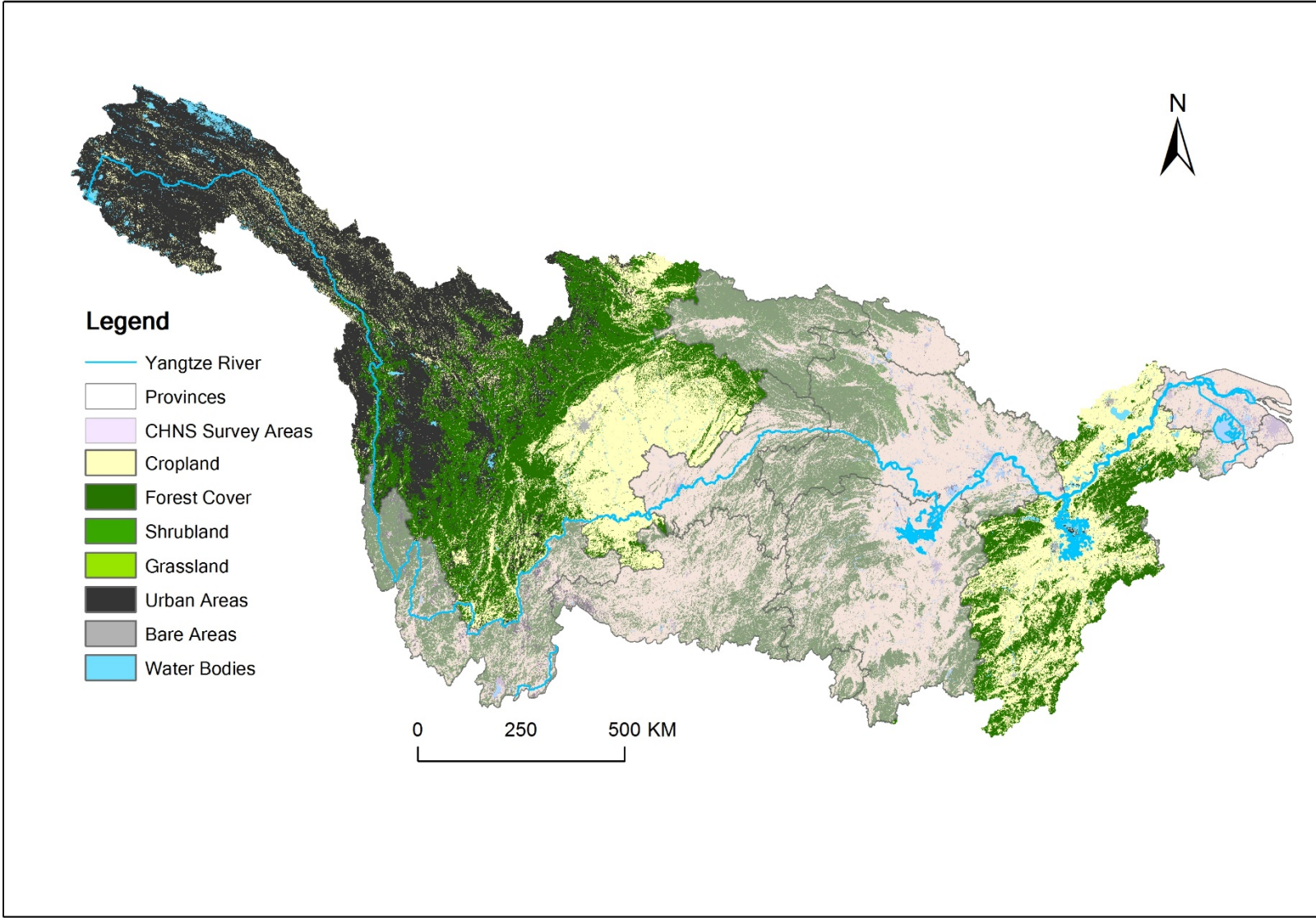
➤ **Chronic Diseases:** Hypertension; Diabetes

➤ **Health Risk Factors:** Food Composition; Nutrition and Health; Smoking Behavior

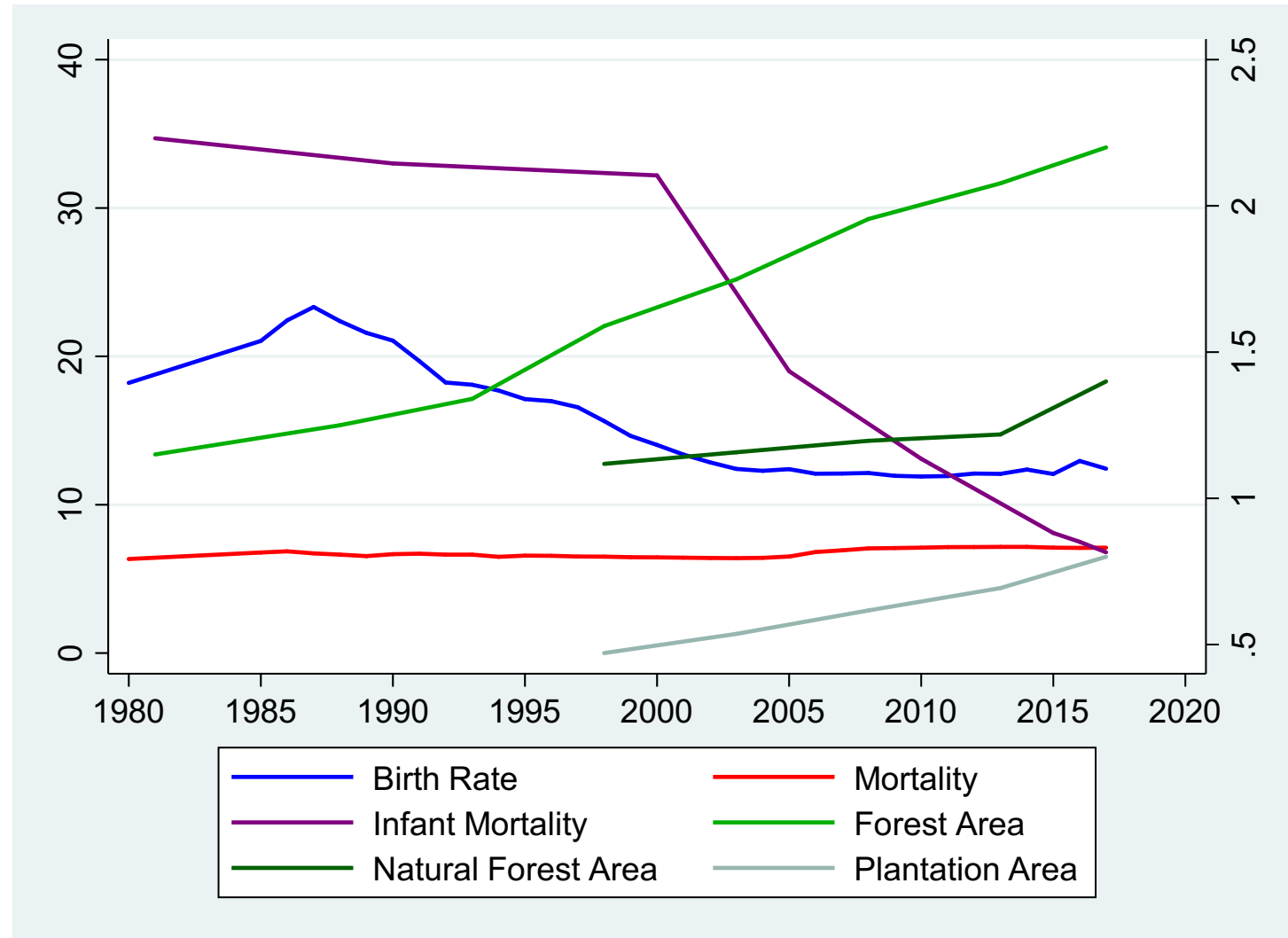
➤ **Cause of Death:** Retrospective Sampling Survey of Death Causes; Death Surveillance







Forest and Human Health



Empirical Strategy

- Contemporaneous Effects
- Health—Air Quality—Forest Conditions (xSeasonality, Weather)
- Health—Forest Fire
- Health—Forest Conditions (distance?)
- Health—Water Quality—Forest Conditions (xSeasonality, Weather)
- Long Term Effects
- Health(mortality, life expectancy)—Forest Conditions (Urban Forest and parks)