

Portland State University

**PDXScholar**

---

Northwest IR User Group

2017 Northwest IR User Group

---

Jul 21st, 10:20 AM - 10:40 AM

## Hyrax, Hyku, HyWhat? Update on the Hydra-in-a-Box Repository Project and Demo of a Live Application

Steve Van Tuyl

*Oregon State University*, [steve.vantuyl@oregonstate.edu](mailto:steve.vantuyl@oregonstate.edu)

Mike Giarlo

*Stanford University*, [mjgiarlo@stanford.edu](mailto:mjgiarlo@stanford.edu)

Follow this and additional works at: <https://pdxscholar.library.pdx.edu/nwirug>



Part of the [Scholarly Communication Commons](#)

**Let us know how access to this document benefits you.**

---

Van Tuyl, Steve and Giarlo, Mike, "Hyrax, Hyku, HyWhat? Update on the Hydra-in-a-Box Repository Project and Demo of a Live Application" (2017). *Northwest IR User Group*. 7.

<https://pdxscholar.library.pdx.edu/nwirug/2017/presentations/7>

This Panel Discussion is brought to you for free and open access. It has been accepted for inclusion in Northwest IR User Group by an authorized administrator of PDXScholar. Please contact us if we can make this document more accessible: [pdxscholar@pdx.edu](mailto:pdxscholar@pdx.edu).

# Hyrax, Hyku, HyWhat?

## Update on the Hydra-in-a-Box Repository Project and Demo of a Live Application



2017 Northwest IR User Group

Mike Giarlo, Technical Manager of Hydra-in-a-Box, Stanford University  
Steve Van Tuyl, Digital Repository Librarian, Oregon State University

# Hydra Samvera



Sufia CurationConcerns Hyrax



Hyrax

# Hyrax Features - [http://bit.ly/hyrax\\_features](http://bit.ly/hyrax_features)

- Upload files and folders
- Describe works with (vocab-backed) metadata
- Derivative generation
- Characterization of files
- Full-text extraction
- Virus scanning
- Internationalized UI (7 languages)
- Create new/restore old versions
- Batch upload / batch editing
- Faceted search and browse
- Role-sensitive user dashboard
- Google Analytics support
- User profiles
- Tweak UI colors via UI
- User notifications
- Single-use links for private works
- Configurable workflows (e.g., mediated deposit)
- Toggle features on/off in UI
- Reporting/metrics in UI
- Proxy deposit
- Contact form
- User-defined, nestable object types
- ResourceSync API
- (Always more coming soon...)

# Hydra-in-a-Box Hyku



# HykuDirect



<https://hykudirect.com>

Pilots: <http://duraspace.org/articles/3178>

🔗 Share Your Work

Terms of Use

Featured Works

Recently Uploaded



**Focus on nutrition: serve...** ✕  
Scholars Archive Admin  
Technical Report  
Nutrition, Vegetables



**Opportunities for...** ✕  
Scholars Archive Admin  
Presentation  
XSEDE (Extreme Science and Engineering Discovery Environment), Research computing



**Evaluation of Nitrogen...** ✕  
Scholars Archive Admin  
Technical Report  
Yeast, Wine Composition and Quality, Enology, Research

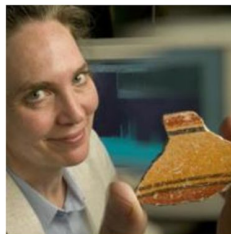


**The influence of solar...** ✕

Explore Collections

Featured Researcher

## Leah Minc - Associate Professor of Anthropology



Compositional analyses of archaeological materials play a significant role in the investigation of past human behavior and ancient economies. Through trace-element characterization of artifacts, raw materials, human remains, and botanical samples, archaeologists are able to address a host of questions concerning resource utilization, trade and exchange, subsistence practices, and the environmental adaptations of past cultures.



# Questions

Lunch table? Come see us at the break...



Contact:

Mike Giarlo - [mjgiarlo@stanford.edu](mailto:mjgiarlo@stanford.edu)

Steve Van Tuyl - [steve.vantuyl@oregonstate.edu](mailto:steve.vantuyl@oregonstate.edu)