

Portland State University

PDXScholar

Urban Studies and Planning Faculty
Publications and Presentations

Nohad A. Toulan School of Urban Studies and
Planning

2-17-2009

From Urban Frontier to Metropolitan Region: Oregon's Cities from 1870 to 2008

Carl Abbott

Portland State University, d3ca@pdx.edu

Follow this and additional works at: https://pdxscholar.library.pdx.edu/usp_fac



Part of the [Urban Studies and Planning Commons](#)

Let us know how access to this document benefits you.

Citation Details

Abbott, Carl, "From Urban Frontier to Metropolitan Region: Oregon's Cities from 1870 to 2008" (2009).
Urban Studies and Planning Faculty Publications and Presentations. 36.
https://pdxscholar.library.pdx.edu/usp_fac/36

This Presentation is brought to you for free and open access. It has been accepted for inclusion in Urban Studies and Planning Faculty Publications and Presentations by an authorized administrator of PDXScholar. Please contact us if we can make this document more accessible: pdxscholar@pdx.edu.

Toward One

OREGON

Rural-Urban Interdependence

From Urban Frontier to Metropolitan Region: Oregon's Cities from 1870 to 2008

Carl Abbott
Portland State University
abbottc@pdx.edu

Three Eras of Oregon Cities

- Portland ascendant: 1870-1920
- Oregon in balance: 1920-1970
- The long arm of the metropolis: 1970-2008

Who's on first?

Portland has been Oregon's largest city through the entire era of statehood.

Three cities have occupied second place: Salem, Astoria, and Eugene.

Ten additional cities have traded off among the top five. In chronological order they are: Oregon City, Jacksonville, The Dalles, Albany, Baker City, Pendleton, Medford, Klamath Falls, Corvallis, and Bend.

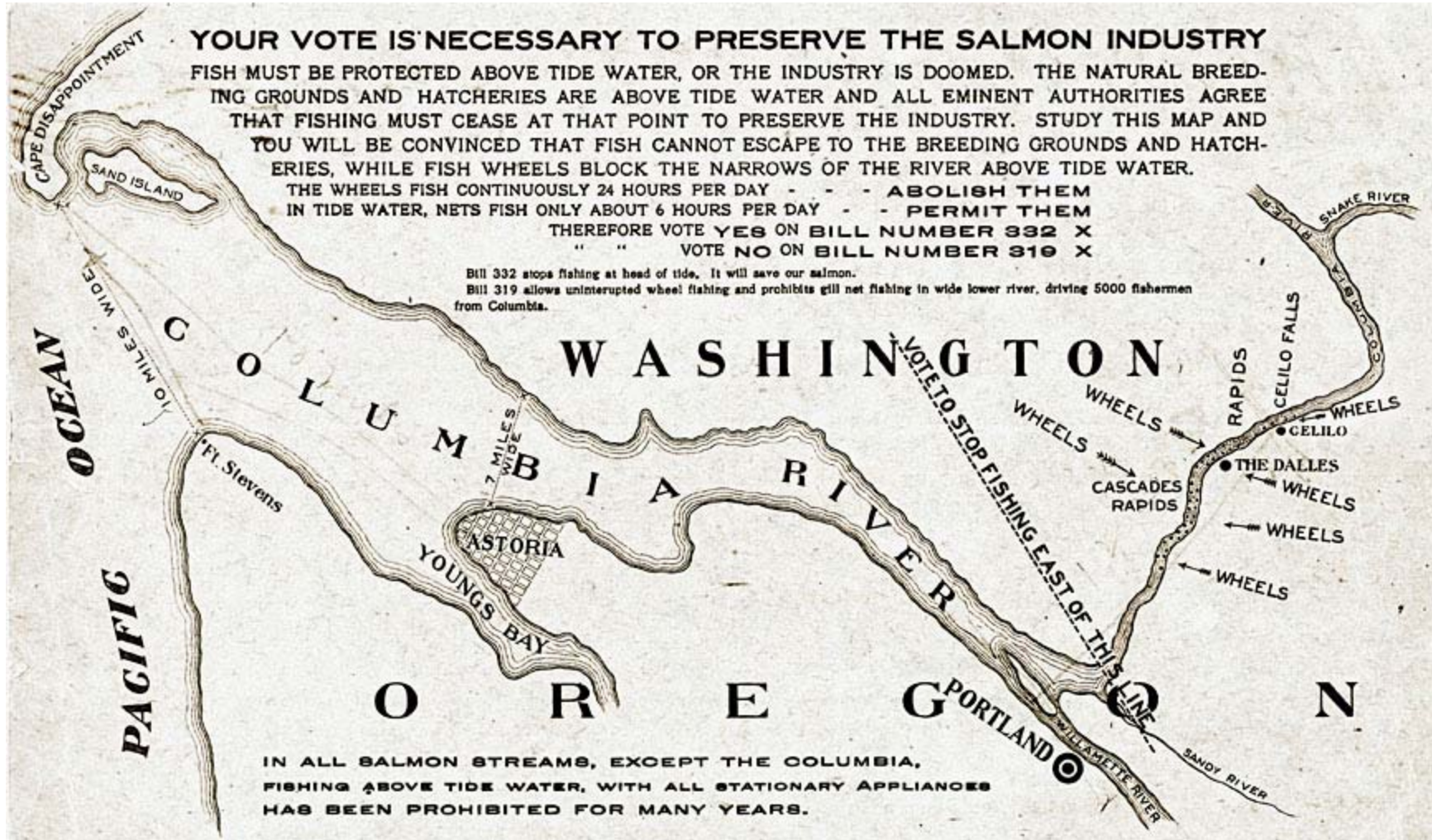
YOUR VOTE IS NECESSARY TO PRESERVE THE SALMON INDUSTRY

FISH MUST BE PROTECTED ABOVE TIDE WATER, OR THE INDUSTRY IS DOOMED. THE NATURAL BREEDING GROUNDS AND HATCHERIES ARE ABOVE TIDE WATER AND ALL EMINENT AUTHORITIES AGREE THAT FISHING MUST CEASE AT THAT POINT TO PRESERVE THE INDUSTRY. STUDY THIS MAP AND YOU WILL BE CONVINCED THAT FISH CANNOT ESCAPE TO THE BREEDING GROUNDS AND HATCHERIES, WHILE FISH WHEELS BLOCK THE NARROWS OF THE RIVER ABOVE TIDE WATER. THE WHEELS FISH CONTINUOUSLY 24 HOURS PER DAY - - - ABOLISH THEM IN TIDE WATER, NETS FISH ONLY ABOUT 6 HOURS PER DAY - - PERMIT THEM

THEREFORE VOTE YES ON BILL NUMBER 332 X
" " VOTE NO ON BILL NUMBER 319 X

Bill 332 stops fishing at head of tide. It will save our salmon.
Bill 319 allows uninterrupted wheel fishing and prohibits gill net fishing in wide lower river, driving 5000 fishermen from Columbia.

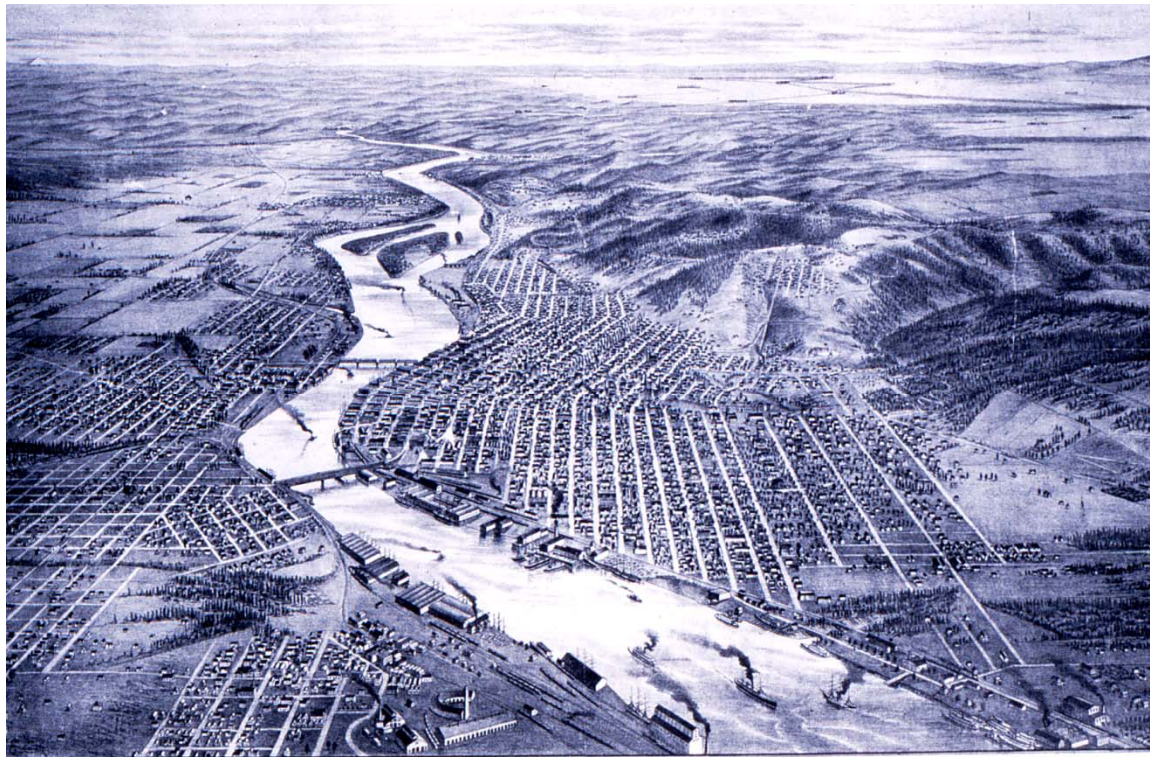
WASHINGTON



IN ALL SALMON STREAMS, EXCEPT THE COLUMBIA,
FISHING ABOVE TIDE WATER, WITH ALL STATIONARY APPLIANCES
HAS BEEN PROHIBITED FOR MANY YEARS.



Portland: Gateway to the Northwest



PORTLAND, OREGON, AND ITS SURROUNDINGS, 1889.

Transportation Center



Transportation Center



Manufacturing Powerhouse



Financial Center

Banks across the U.S. voted in 1913 for their preferred city for branch bank of the new Federal Reserve Banking System. 191 banks in Oregon and Washington submitted their first choice.

75 picked Portland

40 picked Seattle

32 picked San

Francisco

26 picked Spokane

18 picked other cities



Oregon Cities in 1920: Rank Size Model and Actual Populations

Oregon Cities 1920: Rank Size Model and Actual Populations

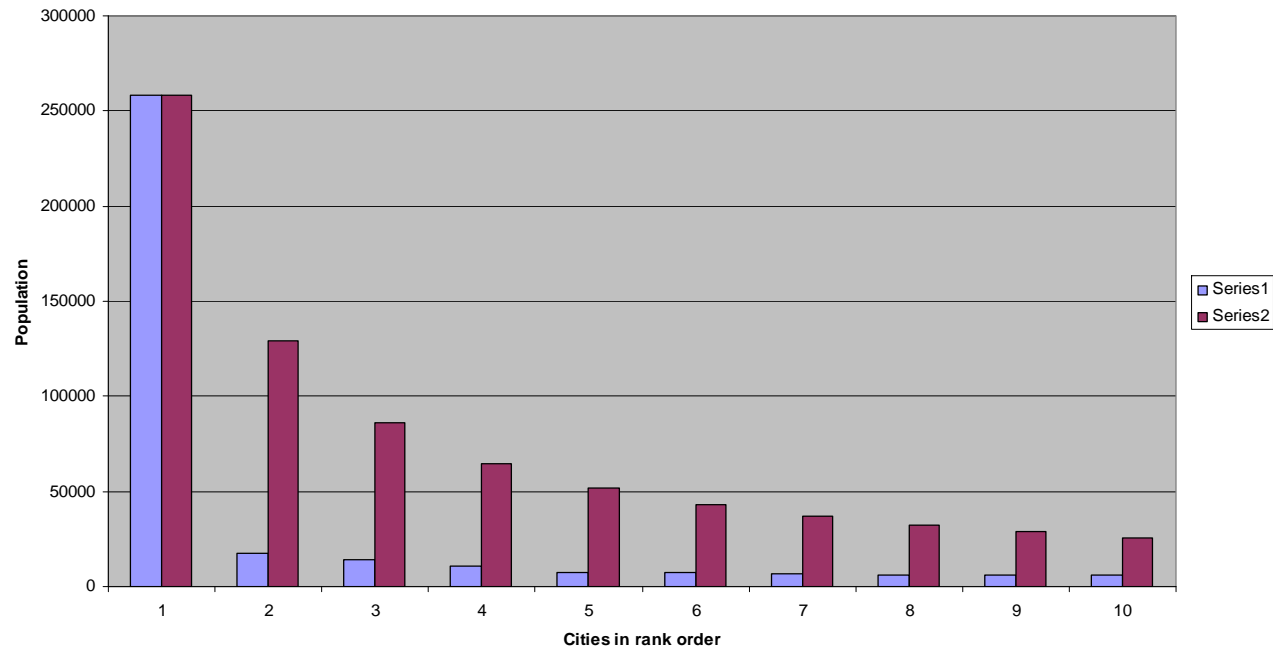
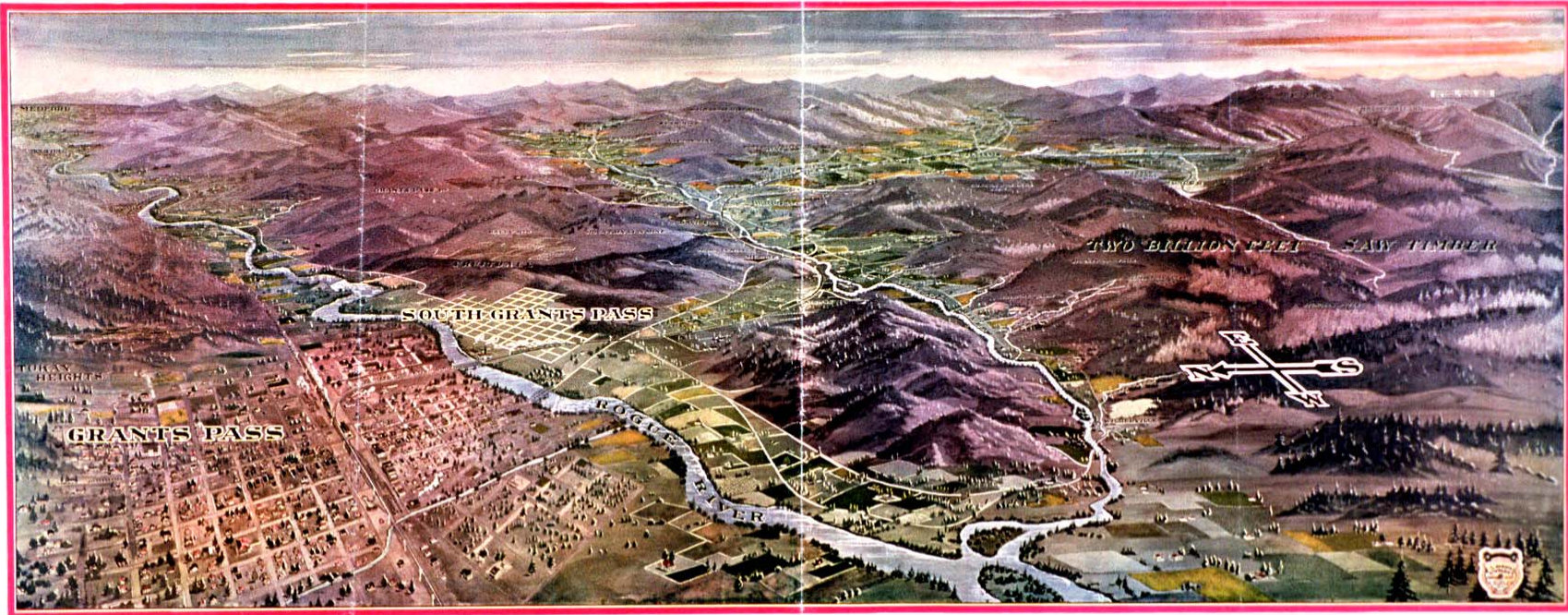


Figure 1





Courtesy of the Bureau of Reclamation



THE FAMOUS ROGUE RIVER VALLEY

The coming Inland Metropolis of Southern Oregon, GRANTS PASS, with its Seventy Thousand acres of unsurpassed apple, peach and diversified farming lands, tributary, now being tapped by rail for the first time by the GRANTS PASS & ROGUE RIVER RAILROAD, traversing the already settled APPLEGATE AND WILLIAMS VALLEYS, adjacent to which are TWO BILLION STANDING FEET of saw timber, paying gold and copper mines, limestone and marble quarries; and, last but not least, the world renowned Marble Falls, one of the Thousand Wonders.

Copyright 1911 by the Oregon Railway & Navigation Company, Portland, Oregon.

Oregon's Largest Cities: 1940 and 1960

Portland 305,294

Salem
30,908

Eugene 20,838

Klamath Falls 16,497

Medford
11,281

Portland

728,088

Eugene

162,890

Salem

48,142

Medford

24,425

Corvallis

20,669

- Portland and Eugene 1960 are metropolitan area populations

The Common Culture of Natural Resources: Estacada 1949 and Portland 1959



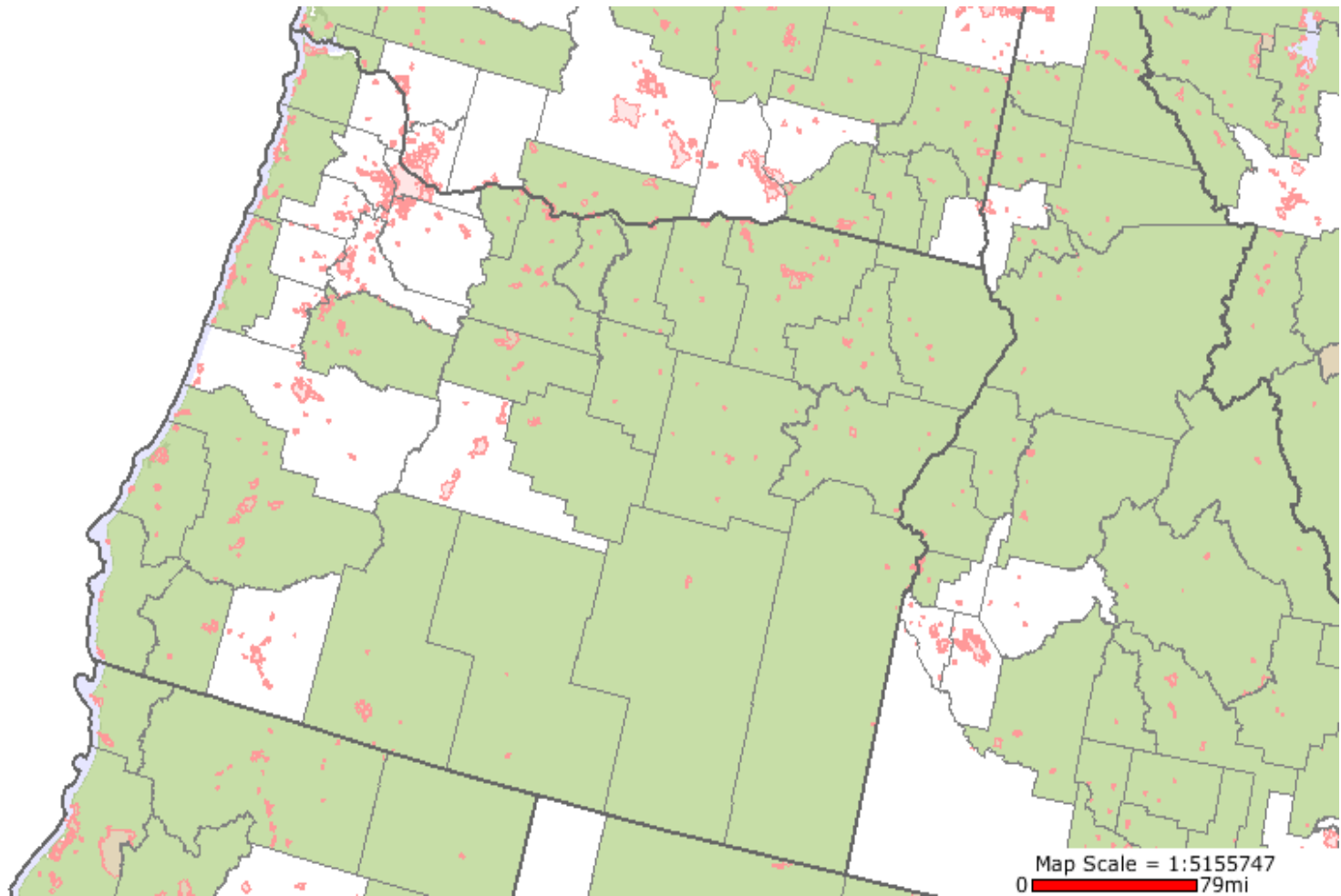
The New Economy of Leisure: The Columbia River Scenic Highway



Oregon's Metropolitan Areas, 1980 and 2007

Portland	1,050,750	Portland	1,734,000
Eugene	275,226	Salem	378,520
Salem	249,895	Eugene	343,140
Medford	132,456	Medford	202,310
		Bend	160,810
		Corvallis	78,153

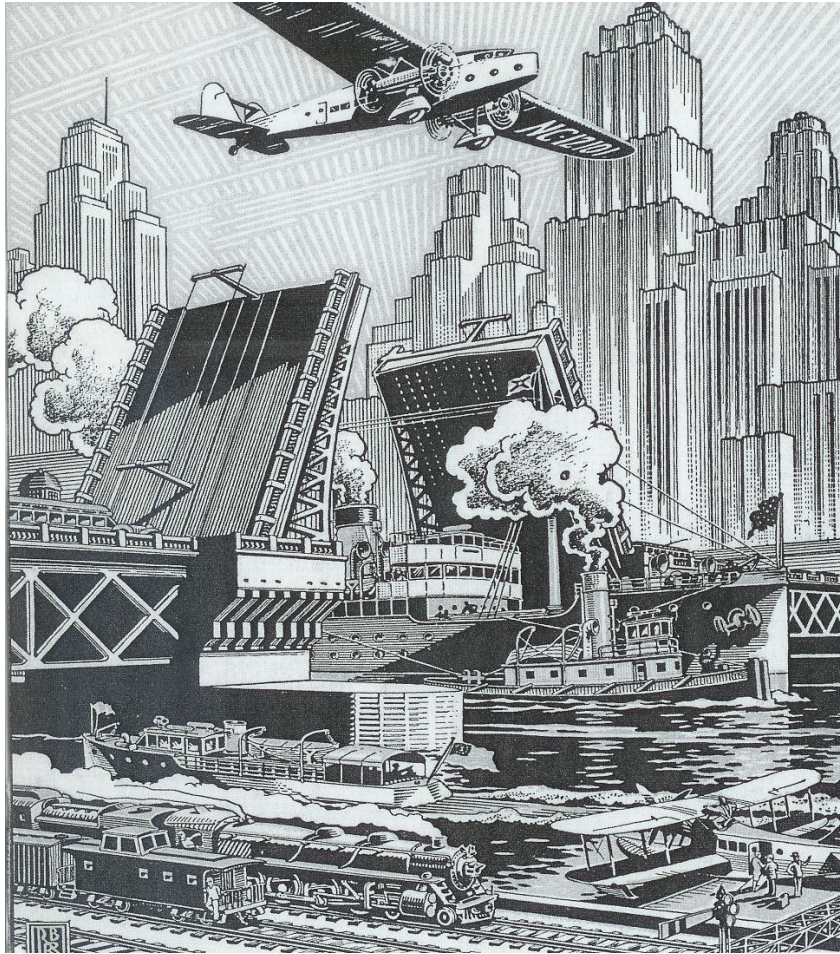
Metropolitan Counties



Oregon catches up in the 20th century

- In 1920, Portland was *twice* as large as the next *twenty* cities combined.
- In 1960, Portland was twice as large as the next *twelve* cities.
- In 2007, the Portland metro area was twice as large as the next *two* metro areas

Portland of the Future: 1920s Style



- Skyscrapers for finance and professional services
- Intermodal transportation hub
- Global connections and the promise of the Pacific Rim.

Two Conclusions

- What's stayed the same?
- What's changed?
- Portland's fundamental services for Oregon were the same in the 1870s, the 1920s, and today.
- Oregon's system of cities is far more equally balanced than it was a century ago.