

4-22-2015

2014 Annual Population Report Tables (April 22, 2015)

Portland State University. Population Research Center

Follow this and additional works at: <https://pdxscholar.library.pdx.edu/populationreports>



Part of the [Urban Studies and Planning Commons](#)

Let us know how access to this document benefits you.

Recommended Citation

Portland State University. Population Research Center, "2014 Annual Population Report Tables (April 22, 2015)" (2015). *Oregon Population Estimates and Reports*. 38.
<https://pdxscholar.library.pdx.edu/populationreports/38>

This Dataset is brought to you for free and open access. It has been accepted for inclusion in Oregon Population Estimates and Reports by an authorized administrator of PDXScholar. Please contact us if we can make this document more accessible: pdxscholar@pdx.edu.



Population Research Center

PORTLAND STATE UNIVERSITY

The population data in the 2014 annual report tables were compiled by the Population Research Center, Portland State University, 4/22/2015.

The tables in the tabs in this workbook hold the 2014 population estimates produced by the Population Research Center, Portland State University. The July 1 estimates of total population

for counties and cities and towns were certified December 15, 2014.

Some tables include the U.S. Census Bureau's decennial Census counts and historical population estimates produced by our Center, and other tables include calculations of change since Census 2010.

Also included are population estimates for broad age groups and 5-year age groups; the estimates for broad age groups were certified December 31, 2014.

There are footnotes that accompany Tables 1 through 7.

Contents of Tabs:

<u>Tab Name</u>	<u>Table Name and description</u>
Table 1:	<p>Annual Population and Components of Population Change for Oregon: 1960-2014; July 1 Population Estimates and April Census Counts.</p> <p><i>Annual populations, population change and the components of population change (births, deaths, natural increase, and net migration) are reported for Oregon. Two graphs are included, one displays annual growth rates, and the other shows the magnitude of change due to natural increase (the number of births minus the number of deaths), and net migration (the number of movers in minus the number of movers out).</i></p>
Table 2:	<p>Population Estimates of Oregon by Area type and Specific Metropolitan Areas: 2000 to 2014.</p> <p><i>Population estimates are aggregated for incorporated and unincorporated, metropolitan and non-metropolitan areas in Oregon. Populations are also reported for each of Oregon's eight Metropolitan Statistical Areas, as designated by the U.S. Census Bureau.</i></p>
Table 3:	<p>Components of Population Change for Oregon's Counties: April 1, 2010 to July 1, 2014.</p> <p><i>Populations are reported for Oregon and the 36 counties; population change and the components of population change from 2010 to 2014 are also included.</i></p>
Table 4:	<p>Population for Oregon and its Counties and Incorporated Cities and Towns: July 1, 2010-July 1, 2014; and Census Counts 1990-2010.</p> <p><i>Annual population estimates from 2010-2014 are reported along with April 1 Census counts from 1990-2010. Sub-county population estimates are grouped by county; cities that are split between counties are reported in parts respective to their county location. Population estimates for the county unincorporated areas are also reported; an estimate for the unincorporated area is a residual of the county total and the sum of the cities within that county.</i></p> <p><i>Note that Census 2000 includes slight revisions to account for challenges to the census counts in the Count Resolution Program.</i></p>

- Table 5:** **Populations for Incorporated Cities Located in More than One County.**
Annual population estimates for 2010-2014, and 2000 and 2010 Census counts, for city parts by county are reported in this table.
- Table 6:** **Rank of Incorporated Cities and Towns by July 1, 2014 Population Size.**
This table displays the rank order of Oregon's incorporated cities and towns by 2014 population size, largest to smallest.
- Table 7:** **Alphabetical Listing of Oregon's Incorporated Cities and Towns with Populations for July 1, 2014 and Census 2010, and Change since Census 2010.**
Population estimates for 2014 and Census counts for 2010 are reported, along with numerical and percentage change during the time period.
- Table 8:** **Population Added to Incorporated Cities Due to Annexations: April 1, 2010 - July 1, 2014.**
This table is a listing of Oregon's cities and towns in alphabetical order with the numbers of persons they have annexed since Census 2010.
- Table 9:** **Population Estimates by Age and Sex for Oregon and Its Counties: July 1, 2014.**
Population estimates for Oregon's counties by 5-year age group are reported in three tables: 1) total population; 2) male population; and 3) female population. Population estimates for ages 15-19 are split into 15-17 and 18-19 age groups.
- Table 10:** **Population Estimates by Broad Age Group (<18 Years, 18-64 Years, & over 64 Years)**
Population Estimates for ages 0-17 years, 18-64 years, and 65 years and older are reported in this table for Oregon and its counties.

Table 1. Population and Components of Population Change for Oregon: 1960 to 2014**July 1 Population Estimates and April 1 Census Counts**

Prepared by Population Research Center, PSU, April 2015.

Date	Population	Population Change	Births	Deaths	Natural Increase	Net Migration
April 1, 1960	1,768,687					
July 1, 1961	1,798,000	29,313	31,660	14,060	17,600	11,713
July 1, 1962	1,828,000	30,000	36,535	16,735	19,800	10,200
July 1, 1963	1,856,000	28,000	32,971	16,171	16,800	11,200
July 1, 1964	1,884,000	28,000	32,687	17,287	15,400	12,600
July 1, 1965	1,912,000	28,000	32,585	17,785	14,800	13,200
July 1, 1966	1,947,200	35,200	31,210	17,710	13,500	21,700
July 1, 1967	1,980,000	32,800	30,711	18,211	12,500	20,300
July 1, 1968	2,018,900	38,900	32,464	19,364	13,100	25,800
July 1, 1969	2,057,000	38,100	34,423	20,123	14,300	23,800
April 1, 1970	2,091,533	34,533	25,755	14,657	11,099	23,434
July 1, 1970	2,099,150	7,617	8,838	4,883	3,956	3,661
July 1, 1971	2,129,900	30,750	34,349	19,809	14,540	16,210
July 1, 1972	2,167,000	37,100	31,332	19,532	11,800	25,300
July 1, 1973	2,217,600	50,600	30,939	20,439	10,500	40,100
July 1, 1974	2,271,900	54,300	31,123	20,223	10,900	43,400
July 1, 1975	2,326,200	54,300	32,934	20,234	12,700	41,600
July 1, 1976	2,386,700	60,500	33,613	20,013	13,600	46,900
July 1, 1977	2,451,900	65,200	37,546	21,246	16,300	48,900
July 1, 1978	2,521,900	70,000	37,231	20,131	17,100	52,900
July 1, 1979	2,584,300	62,400	41,271	21,471	19,800	42,600
April 1, 1980	2,633,156	48,856	31,555	15,951	15,604	33,252
July 1, 1980	2,639,915	6,759	10,773	5,439	5,334	1,425
July 1, 1981	2,660,735	20,820	42,052	21,675	20,377	444
July 1, 1982	2,656,185	-4,550	42,261	21,548	20,713	-25,263
July 1, 1983	2,635,000	-21,185	40,378	22,039	18,339	-39,524
July 1, 1984	2,660,000	25,000	39,611	22,702	16,909	8,091
July 1, 1985	2,675,800	15,800	39,296	23,531	15,765	35
July 1, 1986	2,661,500	-14,300	39,332	23,403	15,929	-30,229
July 1, 1987	2,690,000	28,500	38,702	23,695	15,007	13,493
July 1, 1988	2,741,000	51,000	39,120	24,752	14,368	36,632
July 1, 1989	2,791,000	50,000	40,648	24,705	15,943	34,057
April 1, 1990	2,842,321	51,321	31,319	18,608	12,711	38,610
July 1, 1990	2,847,000	4,679	10,708	6,268	4,439	240
July 1, 1991	2,927,800	80,800	42,644	25,004	17,640	63,160
July 1, 1992	2,990,610	62,810	42,427	25,166	17,261	45,549
July 1, 1993	3,059,110	68,500	41,442	26,543	14,899	53,601
July 1, 1994	3,119,940	60,830	41,487	27,564	13,923	46,907
July 1, 1995	3,182,690	62,750	42,426	27,552	14,874	47,876
July 1, 1996	3,245,100	62,410	43,196	28,768	14,428	47,982
July 1, 1997	3,302,140	57,040	43,625	29,201	14,424	42,616
July 1, 1998	3,350,080	47,940	44,696	28,705	15,991	31,949
July 1, 1999	3,393,410	43,330	45,188	29,848	15,340	27,990
April 1, 2000	3,421,399	27,989	33,805	21,827	11,978	16,011
July 1, 2000	3,431,085	9,686	11,729	7,082	4,647	5,039
July 1, 2001	3,470,385	39,300	45,536	29,934	15,602	23,698
July 1, 2002	3,502,588	32,203	44,995	30,828	14,167	18,036
July 1, 2003	3,538,591	36,003	45,686	30,604	15,082	20,921

Date	Population	Population Change	Births	Deaths	Natural Increase	Net Migration
July 1, 2004	3,578,895	40,303	45,599	30,721	14,878	25,425
July 1, 2005	3,626,938	48,043	45,892	30,717	15,175	32,868
July 1, 2006	3,685,206	58,268	46,946	30,771	16,175	42,093
July 1, 2007	3,739,359	54,153	49,404	31,394	18,010	36,143
July 1, 2008	3,784,182	44,823	49,658	32,008	17,650	27,173
July 1, 2009	3,815,775	31,593	47,958	31,382	16,576	15,017
April 1, 2010	3,831,074	15,299	34,364	23,879	10,485	4,814
July 1, 2010rev	3,837,300	6,226	11,892	7,814	4,078	2,148
July 1, 2011	3,857,625	20,325	45,381	32,437	12,944	7,381
July 1, 2012*	3,883,735	26,110	44,897	32,814	12,083	14,027
July 1, 2013*	3,919,020	35,285	45,094	33,089	12,005	23,280
July 1, 2014	3,962,710	43,690	45,317	34,004	11,313	32,377

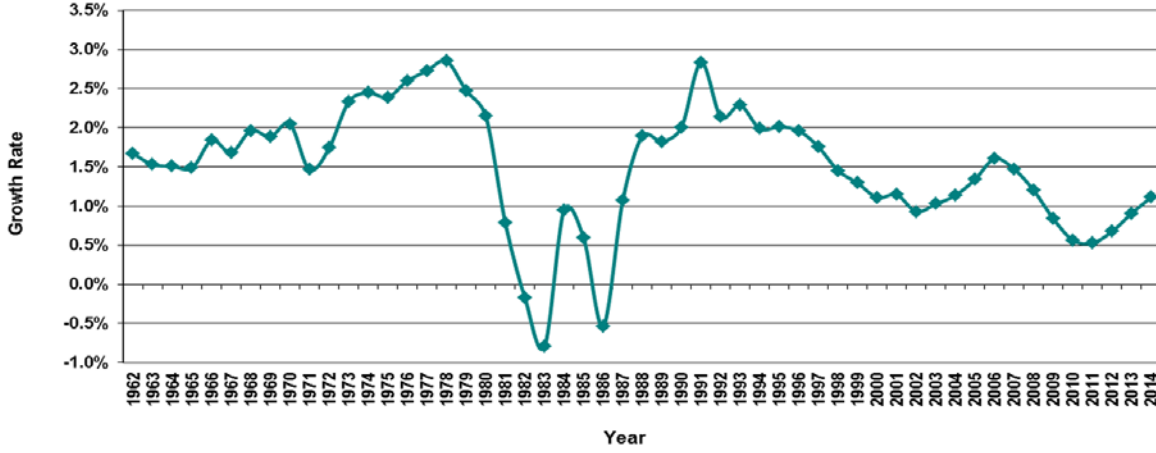
* Births and/or Deaths, Natural Increase, and Net Migration are revised from last year's report.

Additional Notes:

Estimates for July 1, 2000-July 1, 2009 are revised estimates that incorporate Census 2010 (they represent the pattern of migration in the originally certified estimates during the decade adjusted to Census 2010).

For full year July to July population change in a year that includes a decennial Census, add together population change reported for April and in July of the same year.

Annual Population Growth Rates for Oregon



Components of Oregon's Annual Population Change

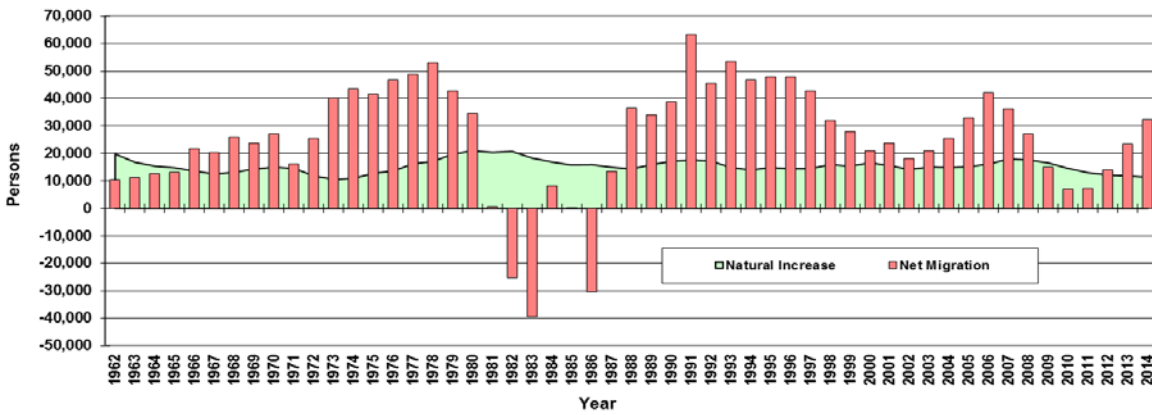


Table 2. Population Estimates of Oregon by Area Type and Specific Metropolitan Areas: 2000 to 2014

Prepared by Population Research Center, PSU, April 2015.

Area Type								
Date	State	Incorporated	Un- incorporated	Metropolitan	Non-metropolitan			
April 1, 2000	3,421,399	2,280,362	1,141,037	2,617,755	803,644			
April 1, 2010	3,831,074	2,669,922	1,161,152	2,978,551	852,523			
July 1, 2010rev	3,837,300	2,673,543	1,163,757	2,983,855	853,445			
July 1, 2011	3,857,625	2,684,812	1,172,813	3,002,340	855,285			
July 1, 2012	3,883,735	2,696,792	1,186,943	3,026,075	857,660			
July 1, 2013	3,919,020	2,716,667	1,202,353	3,258,960	660,060			
July 1, 2014	3,962,710	2,744,907	1,217,803	3,299,380	663,330			
Metropolitan Areas								
Date	Portland-Vancouver- Hillsboro	Eugene-Springfield	Medford	Salem	Corvallis	Bend-Redmond	Albany	Grants Pass
April 1, 2000	1,927,881	322,977	181,273	347,214	78,153	115,367		
April 1, 2010	2,226,009	351,715	203,206	390,738	85,579	157,733		
July 1, 2010rev	2,230,578	352,010	203,340	391,395	85,735	157,905		
July 1, 2011	2,246,083	353,155	203,950	394,115	85,995	158,875		
July 1, 2012	2,266,573	354,200	204,630	397,120	86,785	160,140		
July 1, 2013	2,292,725	356,125	206,310	399,945	87,725	162,525	118,665	82,815
July 1, 2014	2,326,397	358,805	208,375	403,885	88,740	166,400	119,705	83,105

Portland-Vancouver-Hillsboro, OR-WA MSA consists of Clackamas, Columbia, Multnomah, Washington, and Yamhill counties in Oregon; and Clark and Skamania Counties in Washington. Population estimates for the Washington counties were obtained from Washington Office of Financial Management, which refer to April 1; July 1 populations in Clark and Skamania counties were estimated by PRC by interpolation or extrapolation of the April 1 populations. Portland-Vancouver-Hillsboro MSA was renamed from Portland-Vancouver-Beaverton MSA by the Census Bureau in Feb. 2013.

Eugene-Springfield MSA consists of Lane County.

Medford MSA consists of Jackson County.

Salem MSA consists of Marion and Polk Counties.

Corvallis MSA consists of Benton County.

Bend MSA consists of Deschutes County.

Bend-Redmond MSA consists of Deschutes County. Bend-Redmond MSA was renamed from Bend MSA by the Census Bureau in Feb. 2013 .

Albany MSA consists of Linn County. It was designated as an MSA in Feb. 2013 by the Census Bureau.

Grants Pass MSA consists of Josephine County. It was designated as an MSA in Feb. 2013 by the Census Bureau.

Table 3. Components of Population Change for Oregon's Counties: April 1, 2010 to July 1, 2014

Prepared by Population Research Center, PSU, April 2015.

	July 1, 2014 Population Estimate	April 1, 2010 Census Population	Population Change 2010-14	Percent Change 2010-14	Average Annual Change since Census	Births* 2010-14	Deaths* 2010-14	Natural Increase 2010-14	Net Migration 2010-14
OREGON	3,962,710	3,831,074	131,636	3.4%	0.79%	192,456	140,227	52,229	79,407
BAKER	16,325	16,134	191	1.2%	0.3%	733	857	-124	315
BENTON	88,740	85,579	3,161	3.7%	0.9%	3,122	2,338	784	2,377
CLACKAMAS	391,525	375,992	15,533	4.1%	1.0%	16,713	13,022	3,691	11,842
CLATSOP	37,495	37,039	456	1.2%	0.3%	1,792	1,617	175	281
COLUMBIA	50,075	49,351	724	1.5%	0.3%	2,033	1,751	282	442
COOS	62,900	63,043	-143	-0.2%	-0.1%	2,645	3,613	-967	824
CROOK	20,780	20,978	-198	-0.9%	-0.2%	763	971	-208	10
CURRY	22,355	22,364	-9	0.0%	0.0%	777	1,570	-793	784
DESCHUTES	166,400	157,733	8,667	5.5%	1.3%	7,237	5,549	1,688	6,979
DOUGLAS	109,385	107,667	1,718	1.6%	0.4%	4,594	5,890	-1,296	3,014
GILLIAM	1,975	1,871	104	5.6%	1.3%	84	76	8	96
GRANT	7,425	7,445	-20	-0.3%	-0.1%	259	349	-90	70
HARNEY	7,265	7,422	-157	-2.1%	-0.5%	336	348	-11	-146
HOOD RIVER	23,730	22,346	1,384	6.2%	1.4%	1,205	754	451	933
JACKSON	208,375	203,206	5,169	2.5%	0.6%	9,858	9,480	378	4,791
JEFFERSON	22,205	21,720	485	2.2%	0.5%	1,230	844	386	99
JOSEPHINE	83,105	82,713	392	0.5%	0.1%	3,456	4,970	-1,515	1,907
KLAMATH	66,910	66,380	530	0.8%	0.2%	3,380	3,059	321	209
LAKE	7,990	7,895	95	1.2%	0.3%	312	353	-42	137
LANE	358,805	351,715	7,090	2.0%	0.5%	14,973	13,924	1,049	6,041
LINCOLN	46,890	46,034	856	1.9%	0.4%	1,851	2,413	-562	1,418
LINN	119,705	116,672	3,033	2.6%	0.6%	6,114	4,874	1,240	1,793
MALHEUR	31,470	31,313	157	0.5%	0.1%	1,840	1,289	551	-394
MARION	326,150	315,335	10,815	3.4%	0.8%	18,626	10,927	7,699	3,116

	July 1, 2014 Population Estimate	April 1, 2010 Census Population	Population Change 2010-14	Percent Change 2010-14	Average Annual Change since Census	Births* 2010-14	Deaths* 2010-14	Natural Increase 2010-14	Net Migration 2010-14
MORROW	11,525	11,173	352	3.2%	0.7%	672	337	335	17
MULTNOMAH	765,775	735,334	30,441	4.1%	1.0%	40,335	23,181	17,154	13,287
POLK	77,735	75,403	2,332	3.1%	0.7%	3,720	2,712	1,008	1,324
SHERMAN	1,785	1,765	20	1.1%	0.3%	68	65	3	17
TILLAMOOK	25,480	25,250	230	0.9%	0.2%	1,054	1,186	-132	362
UMATILLA	78,340	75,889	2,451	3.2%	0.7%	4,606	2,690	1,916	535
UNION	26,485	25,748	737	2.9%	0.7%	1,274	1,065	209	528
WALLOWA	7,070	7,008	62	0.9%	0.2%	250	372	-123	185
WASCO	26,105	25,213	892	3.5%	0.8%	1,269	1,298	-28	920
WASHINGTON	560,465	529,710	30,755	5.8%	1.3%	30,475	12,897	17,577	13,178
WHEELER	1,440	1,441	-1	-0.1%	0.0%	43	81	-38	37
YAMHILL	102,525	99,193	3,332	3.4%	0.8%	4,759	3,506	1,253	2,079

*The numbers of births and deaths in the most recent 2-3 years are revised annually.

**Table 4. Populations for Oregon and Its Counties and Incorporated Cities and Towns:
July 1, 2010 - July 1, 2014 estimates; and Census Counts 1990-2010**

Prepared by Population Research Center, PSU, April 2015.

County and Cities	July 1 Population Estimates					April 1 Census Population		
	2014	2013	2012	2011	2010rev	2010	2000	1990
OREGON	3,962,710	3,919,020	3,883,735	3,857,625	3,837,300	3,831,074	3,421,436	2,842,321
BAKER	16,325	16,280	16,210	16,215	16,185	16,134	16,741	15,317
Baker City	9,890	9,890	9,890	9,890	9,830	9,828	9,860	9,140
Greenhorn	2	2	2	2	2	-	-	-
Haines	415	415	415	415	415	416	426	405
Halfway	290	290	290	290	290	288	337	311
Huntington	445	445	440	440	440	440	515	522
Richland	175	175	160	160	155	156	147	161
Sumpter	205	205	205	205	205	204	171	119
Unity	70	70	70	70	70	71	131	87
Unincorporated	4,833	4,788	4,738	4,743	4,778	4,731	5,154	4,572
BENTON	88,740	87,725	86,785	85,995	85,735	85,579	78,153	70,811
Adair Village	845	845	845	840	840	840	536	554
Albany (part)*	7,146	6,912	6,764	6,698	6,587	6,463	5,104	15
Corvallis	56,535	55,345	55,055	54,520	54,460	54,462	49,322	44,757
Monroe	620	620	615	615	615	617	607	448
Philomath	4,630	4,625	4,620	4,610	4,590	4,584	3,838	2,983
Unincorporated	18,964	19,378	18,886	18,712	18,643	18,613	18,746	22,054
CLACKAMAS	391,525	386,080	381,680	378,480	376,780	375,992	338,391	278,850
Barlow	135	135	135	135	135	135	140	118
Canby	16,010	15,910	15,865	15,830	15,830	15,829	12,790	8,990
Damascus	10,625	10,595	10,585	10,575	10,540	10,539	Not incorporated yet.	
Estacada	2,935	2,900	2,850	2,850	2,730	2,695	2,371	2,016
Gladstone	11,495	11,495	11,495	11,495	11,495	11,497	11,438	10,152
Happy Valley	16,480	15,575	14,965	14,330	14,100	13,903	4,519	1,519
Johnson City	565	565	565	565	565	566	634	586
Lake Oswego (part)*	34,538	34,427	34,206	34,165	34,067	34,066	32,989	28,317
Milwaukie	20,485	20,500	20,435	20,400	20,290	20,291	20,490	18,670
Molalla	8,820	8,110	8,110	8,110	8,110	8,108	5,647	3,637
Oregon City	33,760	33,390	32,500	32,220	31,995	31,859	25,754	14,698
Portland (part)*	760	749	749	747	744	744	747	707
Rivergrove (part)*	451	411	386	344	258	257	287	267

County and Cities	July 1 Population Estimates					April 1 Census Population		
	2014	2013	2012	2011	2010rev	2010	2000	1990
Sandy	10,170	9,990	9,880	9,780	9,655	9,570	5,385	4,154
Tualatin (part)*	2,903	2,904	2,905	2,869	2,869	2,862	2,664	1,406
West Linn	25,540	25,425	25,370	25,250	25,150	25,109	22,261	16,389
Wilsonville (part)*	19,594	19,187	18,267	17,421	17,385	17,371	13,987	7,096
Unincorporated	176,259	173,811	172,412	171,395	170,862	170,591	176,288	160,128
CLATSOP	37,495	37,270	37,190	37,145	37,070	37,039	35,630	33,301
Astoria	9,590	9,525	9,555	9,495	9,475	9,477	9,813	10,069
Cannon Beach	1,705	1,705	1,705	1,700	1,695	1,690	1,588	1,221
Gearhart	1,475	1,480	1,475	1,465	1,465	1,462	995	1,027
Hammond	Merged with Warrenton in 1991							589
Seaside	6,560	6,560	6,550	6,490	6,460	6,457	5,900	5,359
Warrenton	5,175	5,135	5,090	5,050	5,000	4,989	4,096	2,681
Unincorporated	12,990	12,865	12,815	12,945	12,975	12,964	13,238	12,355
COLUMBIA	50,075	49,850	49,680	49,625	49,430	49,351	43,560	37,557
Clatskanie	1,750	1,745	1,740	1,740	1,735	1,737	1,528	1,629
Columbia City	1,945	1,945	1,950	1,950	1,945	1,946	1,571	1,003
Prescott	55	55	55	55	55	55	72	63
Rainier	1,905	1,900	1,895	1,895	1,895	1,895	1,687	1,674
St. Helens	12,990	12,895	12,920	12,890	12,905	12,883	10,019	7,535
Scappoose	6,700	6,700	6,685	6,665	6,630	6,592	4,976	3,529
Vernonia	2,065	2,065	2,080	2,110	2,155	2,151	2,228	1,808
Unincorporated	22,665	22,545	22,355	22,320	22,110	22,092	21,479	20,316
COOS	62,900	62,860	62,890	62,960	63,035	63,043	62,788	60,273
Bandon	3,105	3,100	3,100	3,085	3,075	3,066	2,833	2,224
Coos Bay	16,315	16,160	16,060	16,010	15,970	15,967	15,372	15,076
Coquille	3,870	3,850	3,870	3,865	3,865	3,866	4,184	4,121
Lakeside	1,705	1,705	1,700	1,695	1,695	1,699	1,421	1,437
Myrtle Point	2,525	2,525	2,515	2,515	2,515	2,514	2,451	2,712
North Bend	9,730	9,720	9,710	9,710	9,695	9,695	9,544	9,614
Powers	700	695	695	690	690	689	734	682
Unincorporated	24,950	25,105	25,240	25,390	25,530	25,547	26,249	24,407
CROOK	20,780	20,690	20,650	20,855	21,020	20,978	19,184	14,111
Prineville	9,385	9,270	9,245	9,260	9,260	9,253	7,358	5,355
Unincorporated	11,395	11,420	11,405	11,595	11,760	11,725	11,826	8,756

County and Cities	July 1 Population Estimates					April 1 Census Population		
	2014	2013	2012	2011	2010rev	2010	2000	1990
CURRY	22,355	22,300	22,295	22,335	22,355	22,364	21,137	19,327
Brookings	6,535	6,450	6,370	6,360	6,350	6,336	5,447	4,400
Gold Beach	2,275	2,275	2,280	2,255	2,255	2,253	1,897	1,546
Port Orford	1,135	1,135	1,135	1,135	1,135	1,133	1,153	1,025
Unincorporated	12,410	12,440	12,510	12,585	12,615	12,642	12,640	12,356
DESCHUTES	166,400	162,525	160,140	158,875	157,905	157,733	115,367	74,958
Bend	79,985	78,280	77,455	76,925	76,740	76,639	52,029	20,447
La Pine	1,670	1,670	1,670	1,670	1,660	1,653	Not incorporated yet.	
Redmond	26,770	26,590	26,345	26,305	26,225	26,215	13,481	7,165
Sisters	2,190	2,115	2,080	2,055	2,040	2,038	959	708
Unincorporated	55,785	53,870	52,590	51,920	51,240	51,188	48,898	46,638
DOUGLAS	109,385	108,850	108,195	107,795	107,690	107,667	100,399	94,649
Canyonville	1,910	1,910	1,910	1,885	1,885	1,884	1,293	1,219
Drain	1,160	1,160	1,160	1,155	1,155	1,151	1,021	1,086
Elkton	205	200	195	195	195	195	147	172
Glendale	875	875	875	875	875	874	855	707
Myrtle Creek	3,465	3,450	3,445	3,440	3,440	3,439	3,419	3,063
Oakland	935	935	925	925	925	927	954	844
Reedsport	4,150	4,150	4,145	4,145	4,150	4,154	4,378	4,796
Riddle	1,185	1,185	1,185	1,185	1,185	1,185	1,014	1,143
Roseburg	22,510	22,275	21,920	21,690	21,660	21,181	20,017	17,069
Sutherlin	7,945	7,930	7,905	7,880	7,840	7,810	6,669	5,020
Winston	5,410	5,400	5,385	5,385	5,385	5,379	4,613	3,773
Yoncalla	1,060	1,060	1,060	1,055	1,050	1,047	1,052	919
Unincorporated	58,575	58,320	58,085	57,980	57,945	58,441	54,967	54,838
GILLIAM	1,975	1,945	1,900	1,880	1,870	1,871	1,915	1,717
Arlington	605	605	585	585	585	586	524	425
Condon	695	695	695	690	685	682	759	635
Lonerock	20	20	20	20	20	21	24	11
Unincorporated	655	625	600	585	580	582	608	646
GRANT	7,425	7,435	7,450	7,450	7,460	7,445	7,935	7,853
Canyon City	705	705	715	710	705	703	669	648
Dayville	150	150	150	150	150	149	138	144
Granite	40	40	40	40	40	38	24	8

County and Cities	July 1 Population Estimates					April 1 Census Population		
	2014	2013	2012	2011	2010rev	2010	2000	1990
John Day	1,745	1,745	1,745	1,755	1,750	1,744	1,821	1,857
Long Creek	195	195	195	195	195	197	228	249
Monument	130	130	130	130	130	128	151	162
Mt. Vernon	525	525	525	525	525	527	595	549
Prairie City	910	910	910	910	910	909	1,080	1,117
Seneca	200	200	200	200	200	199	223	191
Unincorporated	2,825	2,835	2,840	2,835	2,855	2,851	3,006	2,928
HARNEY	7,265	7,260	7,315	7,375	7,445	7,422	7,609	7,060
Burns	2,835	2,835	2,835	2,805	2,805	2,806	3,064	2,913
Hines	1,560	1,560	1,565	1,565	1,565	1,563	1,623	1,452
Unincorporated	2,870	2,865	2,915	3,005	3,075	3,053	2,922	2,695
HOOD RIVER	23,730	23,295	22,875	22,625	22,385	22,346	20,411	16,903
Cascade Locks	1,235	1,200	1,190	1,165	1,145	1,144	1,115	930
Hood River	7,545	7,460	7,375	7,320	7,180	7,167	5,831	4,632
Unincorporated	14,950	14,635	14,310	14,140	14,060	14,035	13,465	11,341
JACKSON	208,375	206,310	204,630	203,950	203,340	203,206	181,273	146,389
Ashland	20,340	20,295	20,325	20,255	20,095	20,078	19,522	16,252
Butte Falls	430	430	425	425	425	423	439	252
Central Point	17,375	17,315	17,275	17,235	17,185	17,169	12,493	7,512
Eagle Point	8,635	8,575	8,550	8,520	8,470	8,469	4,797	3,022
Gold Hill	1,220	1,220	1,220	1,220	1,220	1,220	1,073	980
Jacksonville	2,840	2,840	2,815	2,800	2,785	2,785	2,235	1,896
Medford	76,650	75,920	75,545	75,180	74,980	74,907	63,687	47,021
Phoenix	4,580	4,570	4,570	4,550	4,540	4,538	4,060	3,239
Rogue River	2,155	2,145	2,145	2,140	2,135	2,131	1,851	1,759
Shady Cove	3,015	2,920	2,920	2,910	2,905	2,904	2,307	1,351
Talent	6,230	6,170	6,115	6,095	6,070	6,066	5,589	3,274
Unincorporated	64,905	63,910	62,725	62,620	62,530	62,516	63,220	59,831
JEFFERSON	22,205	22,040	21,940	21,845	21,750	21,720	19,009	13,676
Culver	1,380	1,370	1,370	1,370	1,365	1,357	802	570
Madras	6,260	6,255	6,260	6,225	6,050	6,046	5,078	3,443
Metolius	700	705	705	710	710	710	729	450
Unincorporated	13,865	13,710	13,605	13,540	13,625	13,607	12,400	9,213

County and Cities	July 1 Population Estimates					April 1 Census Population		
	2014	2013	2012	2011	2010rev	2010	2000	1990
JOSEPHINE	83,105	82,815	82,775	82,820	82,775	82,713	75,726	62,649
Cave Junction	1,905	1,905	1,900	1,885	1,885	1,883	1,363	1,126
Grants Pass	35,060	34,855	34,740	34,660	34,555	34,533	23,003	17,503
Unincorporated	46,140	46,055	46,135	46,275	46,335	46,297	51,360	44,020
KLAMATH	66,910	66,810	66,740	66,580	66,505	66,380	63,775	57,702
Bonanza	455	455	455	465	471	415	415	323
Chiloquin	735	735	735	735	735	734	715	673
Klamath Falls	21,500	21,495	21,465	21,120	20,925	20,840	19,460	17,737
Malin	815	815	815	805	805	805	640	725
Merrill	840	845	845	845	845	844	897	837
Unincorporated	42,565	42,465	42,425	42,610	42,724	42,742	41,648	37,407
LAKE	7,990	7,940	7,920	7,885	7,890	7,895	7,422	7,186
Lakeview	2,300	2,300	2,300	2,300	2,295	2,294	2,474	2,526
Paisley	245	245	245	245	245	243	247	350
Unincorporated	5,445	5,395	5,375	5,340	5,350	5,358	4,701	4,310
LANE	358,805	356,125	354,200	353,155	352,010	351,715	322,977	282,912
Coburg	1,045	1,045	1,045	1,045	1,040	1,035	969	763
Cottage Grove	9,840	9,785	9,770	9,745	9,705	9,686	8,445	7,403
Creswell	5,075	5,020	4,990	5,015	5,030	5,031	3,579	2,431
Dunes City	1,315	1,310	1,305	1,305	1,305	1,303	1,241	1,081
Eugene	160,775	159,580	158,335	157,010	156,295	156,185	137,893	112,733
Florence	8,565	8,480	8,470	8,470	8,465	8,466	7,263	5,171
Junction City	5,620	5,550	5,445	5,445	5,430	5,392	4,721	3,692
Lowell	1,060	1,060	1,055	1,045	1,045	1,045	880	785
Oakridge	3,220	3,215	3,210	3,205	3,205	3,205	3,172	3,063
Springfield	60,065	59,990	59,840	59,695	59,425	59,403	52,864	44,664
Veneta	4,690	4,635	4,610	4,610	4,565	4,561	2,762	2,519
Westfir	255	255	255	255	255	253	280	278
Unincorporated	97,280	96,200	95,870	96,310	96,245	96,150	98,908	98,329
LINCOLN	46,890	46,560	46,295	46,155	46,135	46,034	44,479	38,889
Depoe Bay	1,410	1,405	1,400	1,400	1,400	1,398	1,174	870
Lincoln City	8,400	8,380	7,965	7,960	7,935	7,930	7,437	5,903
Newport	10,095	10,160	10,150	10,065	10,030	9,989	9,532	8,437
Siletz	1,235	1,235	1,225	1,210	1,210	1,212	1,133	992

County and Cities	July 1 Population Estimates					April 1 Census Population		
	2014	2013	2012	2011	2010rev	2010	2000	1990
Toledo	3,485	3,470	3,465	3,485	3,470	3,465	3,472	3,174
Waldport	2,060	2,050	2,040	2,040	2,035	2,033	2,050	1,595
Yachats	720	715	705	710	690	690	617	533
Unincorporated	19,485	19,145	19,345	19,285	19,365	19,317	19,064	17,385
LINN	119,705	118,665	118,035	117,340	116,840	116,672	103,069	91,227
Albany (part)*	44,124	43,808	43,946	43,822	43,738	43,695	35,748	29,525
Brownsville	1,680	1,670	1,670	1,670	1,670	1,668	1,449	1,281
Gates (part)*	43	43	43	42	42	40	42	41
Halsey	915	915	915	915	910	904	724	667
Harrisburg	3,635	3,630	3,630	3,585	3,565	3,567	2,795	1,939
Idanha (part)*	62	57	57	57	57	57	85	112
Lebanon	15,740	15,690	15,660	15,565	15,525	15,518	12,950	10,950
Lyons	1,160	1,160	1,160	1,160	1,160	1,161	1,008	938
Mill City (part)*	1,549	1,544	1,543	1,539	1,531	1,531	1,225	1,247
Millersburg	1,505	1,430	1,375	1,375	1,345	1,329	651	715
Scio	830	830	830	840	840	838	695	623
Sodaville	310	310	310	310	310	308	290	192
Sweet Home	9,060	9,065	9,025	9,005	8,945	8,925	8,016	6,850
Tangent	1,195	1,185	1,180	1,180	1,165	1,164	933	556
Waterloo	230	230	230	230	230	229	239	191
Unincorporated	37,667	37,098	36,461	36,044	35,807	35,738	36,219	35,400
MALHEUR	31,470	31,440	31,395	31,445	31,345	31,313	31,615	26,038
Adrian	180	180	180	180	175	177	147	131
Jordan Valley	175	175	180	180	180	181	239	364
Nyssa	3,285	3,270	3,270	3,270	3,265	3,267	3,163	2,629
Ontario	11,465	11,465	11,415	11,375	11,365	11,366	10,985	9,394
Vale	1,875	1,890	1,890	1,875	1,875	1,874	1,976	1,491
Unincorporated	14,490	14,460	14,460	14,565	14,485	14,448	15,105	12,029
MARION	326,150	322,880	320,495	318,150	315,900	315,335	284,838	228,483
Aumsville	3,895	3,815	3,700	3,680	3,605	3,584	3,003	1,650
Aurora	950	935	930	920	920	918	655	567
Detroit	210	205	205	205	205	202	262	331
Donald	975	980	980	980	980	979	625	316
Gates (part)*	442	442	442	433	433	431	429	458
Gervais	2,530	2,520	2,520	2,520	2,510	2,464	2,009	992

County and Cities	July 1 Population Estimates					April 1 Census Population		
	2014	2013	2012	2011	2010rev	2010	2000	1990
Hubbard	3,220	3,200	3,185	3,180	3,175	3,173	2,483	1,881
Idanha (part)*	78	78	78	78	78	77	147	177
Jefferson	3,165	3,150	3,140	3,135	3,115	3,098	2,487	1,805
Keizer	36,985	36,795	36,735	36,715	36,570	36,478	32,203	21,884
Mill City (part)*	326	326	327	326	324	324	312	308
Mt. Angel	3,395	3,310	3,285	3,285	3,285	3,286	3,121	2,778
St. Paul	425	420	420	420	420	421	354	322
Salem (part)*	134,027	133,015	131,977	131,300	130,788	130,398	119,040	94,990
Scotts Mills	365	365	365	360	355	357	312	283
Silverton	9,460	9,330	9,290	9,265	9,230	9,222	7,414	5,635
Stayton	7,700	7,685	7,660	7,660	7,645	7,644	6,816	5,011
Sublimity	2,760	2,745	2,680	2,680	2,680	2,681	2,148	1,491
Turner	1,900	1,865	1,865	1,860	1,855	1,854	1,199	1,281
Woodburn	24,455	24,330	24,090	24,090	24,085	24,080	20,100	13,404
Unincorporated	88,887	87,369	86,622	85,059	83,642	83,664	79,719	72,919
MORROW	11,525	11,425	11,300	11,270	11,175	11,173	10,995	7,625
Boardman	3,445	3,405	3,235	3,235	3,220	3,220	2,855	1,387
Heppner	1,290	1,290	1,290	1,290	1,290	1,291	1,395	1,412
Ione	330	330	330	330	330	329	321	255
Irrigon	1,885	1,835	1,830	1,830	1,825	1,826	1,702	737
Lexington	255	255	240	240	240	238	263	286
Unincorporated	4,320	4,310	4,375	4,345	4,270	4,269	4,459	3,548
MULTNOMAH	765,775	756,530	748,445	741,925	736,785	735,334	660,486	583,887
Fairview	8,935	8,930	8,920	8,920	8,920	8,920	7,561	2,391
Gresham	106,455	106,180	105,970	105,795	105,595	105,594	90,205	68,249
Lake Oswego (part)*	2,558	2,554	2,554	2,551	2,544	2,544	2,274	2,253
Maywood Park	750	750	750	750	750	752	777	781
Portland (part)*	599,186	589,813	585,558	583,546	581,484	581,485	526,986	436,898
Troutdale	16,020	16,015	16,005	16,000	15,980	15,962	13,777	7,852
Wood Village	3,905	3,895	3,890	3,885	3,875	3,878	2,860	2,814
Unincorporated	27,966	28,393	24,798	20,478	17,637	16,199	16,046	62,649
POLK	77,735	77,065	76,625	75,965	75,495	75,403	62,380	49,541
Dallas	14,940	14,800	14,670	14,620	14,590	14,583	12,459	9,422
Falls City	950	950	945	945	945	947	966	818
Independence	8,605	8,585	8,585	8,600	8,600	8,590	6,035	4,425

County and Cities	July 1 Population Estimates					April 1 Census Population		
	2014	2013	2012	2011	2010rev	2010	2000	1990
Monmouth	9,620	9,720	9,755	9,720	9,545	9,534	7,741	6,288
Salem (part)*	25,238	24,755	24,478	24,410	24,312	24,239	17,884	12,803
Willamina (part)*	848	847	845	845	845	845	716	554
Unincorporated	17,534	17,408	17,347	16,825	16,658	16,665	16,579	15,231
SHERMAN	1,785	1,780	1,765	1,765	1,765	1,765	1,934	1,918
Grass Valley	165	165	165	165	165	164	171	160
Moro	325	325	325	325	325	324	337	292
Rufus	280	255	255	250	250	249	268	295
Wasco	415	415	410	410	410	410	381	374
Unincorporated	600	620	610	615	615	618	777	797
TILLAMOOK	25,480	25,375	25,305	25,255	25,260	25,250	24,262	21,570
Bay City	1,320	1,310	1,305	1,295	1,290	1,286	1,149	1,027
Garibaldi	790	790	785	785	780	779	899	886
Manzanita	615	615	610	605	600	598	564	513
Nehalem	280	280	270	270	270	271	203	232
Rockaway Beach	1,325	1,325	1,320	1,320	1,315	1,312	1,267	970
Tillamook	4,880	4,885	4,880	4,905	4,920	4,935	4,352	4,006
Wheeler	405	415	415	415	415	414	391	335
Unincorporated	15,865	15,755	15,720	15,660	15,670	15,655	15,437	13,601
UMATILLA	78,340	77,895	77,120	76,580	76,000	75,889	70,548	59,249
Adams	370	370	365	365	365	350	297	223
Athena	1,125	1,125	1,125	1,125	1,125	1,126	1,221	997
Echo	705	700	705	700	700	699	650	500
Helix	195	190	190	185	185	184	183	150
Hermiston	17,345	17,240	16,995	16,865	16,795	16,745	13,154	10,047
Milton-Freewater	7,060	7,060	7,050	7,055	7,045	7,050	6,470	5,533
Pendleton	16,700	16,780	16,715	16,625	16,605	16,612	16,354	15,142
Pilot Rock	1,505	1,505	1,505	1,505	1,505	1,502	1,532	1,478
Stanfield	2,115	2,095	2,075	2,055	2,045	2,043	1,979	1,568
Ukiah	245	235	235	230	185	186	255	250
Umatilla	7,050	7,025	7,015	6,980	6,905	6,906	4,978	3,046
Weston	685	675	675	675	670	667	717	606
Unincorporated	23,240	22,895	22,470	22,215	21,870	21,819	22,758	19,709

County and Cities	July 1 Population Estimates					April 1 Census Population		
	2014	2013	2012	2011	2010rev	2010	2000	1990
UNION	26,485	26,325	26,175	25,980	25,810	25,748	24,530	23,598
Cove	550	550	550	550	550	552	594	507
Elgin	1,725	1,725	1,725	1,725	1,710	1,711	1,654	1,586
Imbler	305	305	305	305	305	306	284	299
Island City	1,025	1,015	1,015	1,010	1,000	989	916	696
La Grande	13,150	13,125	13,110	13,095	13,095	13,082	12,327	11,766
North Powder	445	445	445	445	440	439	489	448
Summerville	135	135	135	135	135	135	117	142
Union	2,150	2,150	2,145	2,140	2,130	2,121	1,926	1,847
Unincorporated	7,000	6,875	6,745	6,575	6,445	6,413	6,223	6,307
WALLOWA	7,070	7,045	7,015	6,995	7,005	7,008	7,226	6,911
Enterprise	1,940	1,940	1,940	1,940	1,940	1,940	1,895	1,905
Joseph	1,095	1,095	1,090	1,090	1,085	1,081	1,054	1,073
Lostine	215	215	215	215	215	213	263	231
Wallowa	810	810	810	805	810	808	869	748
Unincorporated	3,010	2,985	2,960	2,945	2,955	2,966	3,145	2,954
WASCO	26,105	25,810	25,485	25,300	25,235	25,213	23,791	21,683
Antelope	50	45	45	45	45	46	59	34
Dufur	605	605	605	605	605	604	588	527
Maupin	425	425	425	420	420	418	411	456
Mosier	440	440	440	435	435	433	410	244
Shaniko	35	35	35	35	35	36	26	26
The Dalles	14,480	14,440	14,440	14,440	13,630	13,620	12,156	11,021
Unincorporated	10,070	9,820	9,495	9,320	10,065	10,056	10,141	9,375
WASHINGTON	560,465	550,990	542,845	536,370	531,070	529,710	445,342	311,554
Banks	1,775	1,775	1,775	1,775	1,775	1,777	1,286	563
Beaverton	93,395	91,935	91,205	90,835	89,925	89,803	76,129	53,307
Cornelius	11,910	11,915	11,915	11,915	11,875	11,869	9,652	6,148
Durham	1,880	1,880	1,365	1,360	1,355	1,351	1,382	748
Forest Grove	22,715	22,340	21,460	21,275	21,130	21,083	17,708	13,559
Gaston	640	640	640	640	635	637	600	563
Hillsboro	95,310	93,340	92,550	92,350	91,970	91,611	70,186	37,598
King City	3,365	3,320	3,225	3,135	3,115	3,111	1,949	2,060
Lake Oswego (part)*	9	9	9	9	9	9	15	6
North Plains	2,015	2,015	1,990	1,990	1,970	1,947	1,605	972

County and Cities	July 1 Population Estimates					April 1 Census Population		
	2014	2013	2012	2011	2010rev	2010	2000	1990
Portland (part)*	1,564	1,558	1,558	1,552	1,547	1,547	1,388	1,197
Rivergrove (part)*	34	34	34	31	32	32	37	27
Sherwood	18,955	18,575	18,265	18,255	18,205	18,194	11,791	3,093
Tigard	49,140	49,135	48,695	48,415	48,090	48,035	41,223	29,435
Tualatin (part)*	24,022	23,606	23,215	23,251	23,191	23,192	20,127	13,258
Wilsonville (part)*	2,386	2,363	2,248	2,144	2,140	2,138	4	10
Unincorporated	231,350	226,551	222,696	217,438	214,106	213,374	190,260	149,010
WHEELER	1,440	1,430	1,425	1,435	1,440	1,441	1,547	1,396
Fossil	475	475	475	475	475	473	469	399
Mitchell	130	130	130	130	130	130	170	163
Spray	160	160	160	160	160	160	140	149
Unincorporated	675	665	660	670	675	678	768	685
YAMHILL	102,525	101,400	100,550	99,850	99,405	99,193	84,992	65,551
Amity	1,620	1,610	1,610	1,615	1,615	1,614	1,478	1,175
Carlton	2,070	2,065	2,035	2,035	2,015	2,007	1,514	1,289
Dayton	2,570	2,550	2,535	2,530	2,535	2,534	2,119	1,526
Dundee	3,180	3,170	3,175	3,175	3,170	3,162	2,598	1,663
Lafayette	3,825	3,755	3,735	3,740	3,740	3,742	2,586	1,292
McMinnville	32,705	32,510	32,435	32,270	32,240	32,187	26,499	17,894
Newberg	22,765	22,580	22,300	22,230	22,110	22,068	18,064	13,086
Sheridan	6,225	6,180	6,180	6,125	6,125	6,127	5,561	3,979
Willamina (part)*	1,197	1,183	1,180	1,180	1,180	1,180	1,128	1,194
Yamhill	1,050	1,030	1,020	1,020	1,020	1,024	794	867
Unincorporated	25,318	24,767	24,345	23,930	23,655	23,548	22,651	21,586

*City is located and has population in more than one county.

Note: Cities/towns that have conducted local enumerations following Census 2010 are: Adams and Bonanza in 2010; Rivergrove and Ukiah in 2011; and Lexington in 2013.

Please use caution when comparing the population estimates of the unincorporated county areas, and note that the population estimates for the unincorporated areas represent revised estimates rather than estimates resulting from measured direct change during the year. The population for an unincorporated area is a residual of the county total population and the sum of that county's city populations. The unincorporated area population is affected by those cities not submitting to PRC the completed annual form because the population of a city is held constant to the previous year if no recent form data are received. Additionally, cities sending incomplete data will affect the population residual in the unincorporated area, as do city annexations.

Table 5. Populations for Incorporated Cities Located in More than One County

Prepared by Population Research Center, PSU, April 2015.

City and Counties	July 1 Population Estimate					April 1 Census Population	
	2014	2013	2012	2011	2010rev	2010	2000
Albany	51,270	50,720	50,710	50,520	50,325	50,158	40,852
in Benton	7,146	6,912	6,764	6,698	6,587	6,463	5,104
in Linn	44,124	43,808	43,946	43,822	43,738	43,695	35,748
Gates	485	485	485	475	475	471	471
in Linn	43	43	43	42	42	40	42
in Marion	442	442	442	433	433	431	429
Idanha	140	135	135	135	135	134	232
in Linn	62	57	57	57	57	57	85
in Marion	78	78	78	78	78	77	147
Lake Oswego	37,105	36,990	36,770	36,725	36,620	36,619	35,278
in Clackamas	34,538	34,427	34,206	34,165	34,067	34,066	32,989
in Multnomah	2,558	2,554	2,554	2,551	2,544	2,544	2,274
in Washington	9	9	9	9	9	9	15
Mill City	1,875	1,870	1,870	1,865	1,855	1,855	1,537
in Linn	1,549	1,544	1,543	1,539	1,531	1,531	1,225
in Marion	326	326	327	326	324	324	312
Portland	601,510	592,120	587,865	585,845	583,775	583,776	529,121
in Clackamas	760	749	749	747	744	744	747
in Multnomah	599,186	589,813	585,558	583,546	581,484	581,485	526,986
in Washington	1,564	1,558	1,558	1,552	1,547	1,547	1,388
Rivergrove*	485	445	420	375	290	289	324
in Clackamas	451	411	386	344	258	257	287
in Washington	34	34	34	31	32	32	37
Salem	159,265	157,770	156,455	155,710	155,100	154,637	136,924
in Marion	134,027	133,015	131,989	131,306	130,788	130,398	119,040
in Polk	25,238	24,755	24,466	24,404	24,312	24,239	17,884
Tualatin	26,925	26,510	26,120	26,120	26,060	26,054	22,791
in Clackamas	2,903	2,904	2,905	2,869	2,869	2,862	2,664
in Washington	24,022	23,606	23,215	23,251	23,191	23,192	20,127
Willamina	2,045	2,030	2,025	2,025	2,025	2,025	1,844
in Polk	848	847	845	845	845	845	716
in Yamhill	1,197	1,183	1,180	1,180	1,180	1,180	1,128
Wilsonville	21,980	21,550	20,515	19,565	19,525	19,509	13,991
in Clackamas	19,594	19,187	18,267	17,421	17,385	17,371	13,987
in Washington	2,386	2,363	2,248	2,144	2,140	2,138	4

*A local enumeration was conducted in 2011.

Table 6. Rank of Incorporated Cities by July 1, 2014 Population Size

Prepared by Population Research Center, PSU, April 2015.

City	Population	City	Population	City	Population	City	Population	City	Population
Portland	601510	Astoria	9,590	Dayton	2,570	Athena	1,125	Scotts Mills	365
Eugene	160775	Silverton	9,460	Gervais	2,530	Joseph	1,095	Ione	330
Salem	159265	Prineville	9,385	Myrtle Point	2,525	Lowell	1,060	Moro	325
Gresham	106455	Sweet Home	9,060	Lakeview	2,300	Yoncalla	1,060	Sodaville	310
Hillsboro	95310	Fairview	8,935	Gold Beach	2,275	Yamhill	1,050	Imbler	305
Beaverton	93395	Molalla	8,820	Sisters	2,190	Coburg	1,045	Halfway	290
Bend	79985	Eagle Point	8,635	Rogue River	2,155	Island City	1,025	Nehalem	280
Medford	76650	Independence	8,605	Union	2,150	Donald	975	Rufus	280
Springfield	60065	Florence	8,565	Stanfield	2,115	Aurora	950	Lexington	255
Corvallis	56535	Lincoln City	8,400	Carlton	2,070	Falls City	950	Westfir	255
Albany	51270	Sutherlin	7,945	Vernonia	2,065	Oakland	935	Paisley	245
Tigard	49140	Stayton	7,700	Waldport	2,060	Halsey	915	Ukiah	245
Lake Oswego	37105	Hood River	7,545	Willamina	2,045	Prairie City	910	Waterloo	230
Keizer	36985	Milton-Freewater	7,060	North Plains	2,015	Glendale	875	Lostine	215
Grants Pass	35060	Umatilla	7,050	Columbia City	1,945	Adair Village	845	Detroit	210
Oregon City	33760	Scappoose	6,700	Enterprise	1,940	Merrill	840	Elkton	205
McMinnville	32705	Seaside	6,560	Canyonville	1,910	Scio	830	Sumpter	205
Tualatin	26925	Brookings	6,535	Cave Junction	1,905	Malin	815	Seneca	200
Redmond	26770	Madras	6,260	Rainier	1,905	Wallowa	810	Helix	195
West Linn	25540	Talent	6,230	Turner	1,900	Garibaldi	790	Long Creek	195
Woodburn	24455	Sheridan	6,225	Irrigon	1,885	Maywood Park	750	Adrian	180
Newberg	22765	Junction City	5,620	Durham	1,880	Chiloquin	735	Jordan Valley	175
Forest Grove	22715	Winston	5,410	Mill City	1,875	Yachats	720	Richland	175
Roseburg	22510	Warrenton	5,175	Vale	1,875	Canyon City	705	Grass Valley	165
Wilsonville	21980	Creswell	5,075	Banks	1,775	Echo	705	Spray	160
Klamath Falls	21500	Tillamook	4,880	Clatskanie	1,750	Metolius	700	Dayville	150
Milwaukie	20485	Veneta	4,690	John Day	1,745	Powers	700	Idanha	140
Ashland	20340	Philomath	4,630	Elgin	1,725	Condon	695	Barlow	135
Sherwood	18955	Phoenix	4,580	Cannon Beach	1,705	Weston	685	Summerville	135
Central Point	17375	Reedsport	4,150	Lakeside	1,705	Gaston	640	Mitchell	130
Hermiston	17345	Wood Village	3,905	Brownsville	1,680	Monroe	620	Monument	130
Pendleton	16700	Aumsville	3,895	La Pine	1,670	Manzanita	615	Unity	70
Happy Valley	16480	Coquille	3,870	Amity	1,620	Arlington	605	Prescott	55
Coos Bay	16315	Lafayette	3,825	Hines	1,560	Dufur	605	Antelope	50
Troutdale	16020	Harrisburg	3,635	Millersburg	1,505	Johnson City	565	Granite	40
Canby	16010	Toledo	3,485	Pilot Rock	1,505	Cove	550	Shaniko	35
Lebanon	15740	Myrtle Creek	3,465	Gearhart	1,475	Mt. Vernon	525	Lonerock	20
Dallas	14940	Boardman	3,445	Depoe Bay	1,410	Gates	485	Greenhorn	2
The Dalles	14480	Mt. Angel	3,395	Culver	1,380	Rivergrove	485		
La Grande	13150	King City	3,365	Rockaway Beach	1,325	Fossil	475		
St. Helens	12990	Nyssa	3,285	Bay City	1,320	Bonanza	455		
Cornelius	11910	Hubbard	3,220	Dunes City	1,315	Huntington	445		
Gladstone	11495	Oakridge	3,220	Heppner	1,290	North Powder	445		
Ontario	11465	Dundee	3,180	Cascade Locks	1,235	Mosier	440		
Damascus	10625	Jefferson	3,165	Siletz	1,235	Butte Falls	430		
Sandy	10170	Bandon	3,105	Gold Hill	1,220	Maupin	425		
Newport	10095	Shady Cove	3,015	Tangent	1,195	St. Paul	425		
Baker City	9890	Estacada	2,935	Riddle	1,185	Haines	415		
Cottage Grove	9840	Jacksonville	2,840	Drain	1,160	Wasco	415		
North Bend	9730	Burns	2,835	Lyons	1,160	Wheeler	405		
Monmouth	9620	Sublimity	2,760	Port Orford ²⁰	1,135	Adams	370		

**Table 7. Alphabetical Listing of Incorporated Cities with Population for July 1, 2014,
Census 2010 Population and Change since Census 2010.**

Prepared by Population Research Center, PSU, April 2015.

City	Estimate July 1, 2014	Census April 1, 2010	Change 2010-2014	Percent Change 2010-2014	City	Estimate July 1, 2014	Census April 1, 2010	Change 2010-2014	Percent Change 2010-2014
Adair Village	845	840	5	0.6%	Dunes City	1,315	1,303	12	0.9%
Adams	370	350	20	5.7%	Durham	1,880	1,351	529	39.2%
Adrian	180	177	3	1.7%	Eagle Point	8,635	8,469	166	2.0%
Albany	51,270	50,158	1,112	2.2%	Echo	705	699	6	0.9%
Amity	1,620	1,614	6	0.4%	Elgin	1,725	1,711	14	0.8%
Antelope	50	46	4	8.7%	Elkton	205	195	10	5.1%
Arlington	605	586	19	3.2%	Enterprise	1,940	1,940	0	0.0%
Ashland	20,340	20,078	262	1.3%	Estacada	2,935	2,695	240	8.9%
Astoria	9,590	9,477	113	1.2%	Eugene	160,775	156,185	4,590	2.9%
Athena	1,125	1,126	-1	-0.1%	Fairview	8,935	8,920	15	0.2%
Aumsville	3,895	3,584	311	8.7%	Falls City	950	947	3	0.3%
Aurora	950	918	32	3.5%	Florence	8,565	8,466	99	1.2%
Baker City	9,890	9,828	62	0.6%	Forest Grove	22,715	21,083	1,632	7.7%
Bandon	3,105	3,066	39	1.3%	Fossil	475	473	2	0.4%
Banks	1,775	1,777	-2	-0.1%	Garibaldi	790	779	11	1.4%
Barlow	135	135	0	0.0%	Gaston	640	637	3	0.5%
Bay City	1,320	1,286	34	2.6%	Gates	485	471	14	3.0%
Beaverton	93,395	89,803	3,592	4.0%	Gearhart	1,475	1,462	13	0.9%
Bend	79,985	76,639	3,346	4.4%	Gervais	2,530	2,464	66	2.7%
Boardman	3,445	3,220	225	7.0%	Gladstone	11,495	11,497	-2	0.0%
Bonanza	455	415	40	9.6%	Glendale	875	874	1	0.1%
Brookings	6,535	6,336	199	3.1%	Gold Beach	2,275	2,253	22	1.0%
Brownsville	1,680	1,668	12	0.7%	Gold Hill	1,220	1,220	0	0.0%
Burns	2,835	2,806	29	1.0%	Granite	40	38	2	5.3%
Butte Falls	430	423	7	1.7%	Grants Pass	35,060	34,533	527	1.5%
Canby	16,010	15,829	181	1.1%	Grass Valley	165	164	1	0.6%
Cannon Beach	1,705	1,690	15	0.9%	Greenhorn	2	0	2	-
Canyon City	705	703	2	0.3%	Gresham	106,455	105,594	861	0.8%
Canyonville	1,910	1,884	26	1.4%	Haines	415	416	-1	-0.2%
Carlton	2,070	2,007	63	3.1%	Halfway	290	288	2	0.7%
Cascade Locks	1,235	1,144	91	8.0%	Halsey	915	904	11	1.2%
Cave Junction	1,905	1,883	22	1.2%	Happy Valley	16,480	13,903	2,577	18.5%
Central Point	17,375	17,169	206	1.2%	Harrisburg	3,635	3,567	68	1.9%
Chiloquin	735	734	1	0.1%	Helix	195	184	11	6.0%
Clatskanie	1,750	1,737	13	0.7%	Heppner	1,290	1,291	-1	-0.1%
Coburg	1,045	1,035	10	1.0%	Hermiston	17,345	16,745	600	3.6%
Columbia City	1,945	1,946	-1	-0.1%	Hillsboro	95,310	91,611	3,699	4.0%
Condon	695	682	13	1.9%	Hines	1,560	1,563	-3	-0.2%
Coos Bay	16,315	15,967	348	2.2%	Hood River	7,545	7,167	378	5.3%
Coquille	3,870	3,866	4	0.1%	Hubbard	3,220	3,173	47	1.5%
Cornelius	11,910	11,869	41	0.3%	Huntington	445	440	5	1.1%
Corvallis	56,535	54,462	2,073	3.8%	Idanha	140	134	6	4.5%
Cottage Grove	9,840	9,686	154	1.6%	Imbler	305	306	-1	-0.3%
Cove	550	552	-2	-0.4%	Independence	8,605	8,590	15	0.2%
Creswell	5,075	5,031	44	0.9%	Ione	330	329	1	0.3%
Culver	1,380	1,357	23	1.7%	Irrigon	1,885	1,826	59	3.2%
Dallas	14,940	14,583	357	2.4%	Island City	1,025	989	36	3.6%
Damascus	10,625	10,539	86	0.8%	Jacksonville	2,840	2,785	55	2.0%
Dayton	2,570	2,534	36	1.4%	Jefferson	3,165	3,098	67	2.2%
Dayville	150	149	1	0.7%	John Day	1,745	1,744	1	0.1%
Depoe Bay	1,410	1,398	12	0.9%	Johnson City	565	566	-1	-0.2%
Detroit	210	202	8	4.0%	Jordan Valley	175	181	-6	-3.3%
Donald	975	979	-4	-0.4%	Joseph	1,095	1,081	14	1.3%
Drain	1,160	1,151	9	0.8%	Junction City	5,620	5,392	228	4.2%
Dufur	605	604	1	0.2%	Keizer	36,985	36,478	507	1.4%
Dundee	3,180	3,162	18	0.6%	King City	3,365	3,111	254	8.2%

**Table 7. Alphabetical Listing of Incorporated Cities with Population for July 1, 2014,
Census 2010 Population and Change since Census 2010.**

Prepared by Population Research Center, PSU, April 2015.

City	Estimate July 1, 2014	Census April 1, 2010	Change 2010-2014	Percent Change 2010-2014	City	Estimate July 1, 2014	Census April 1, 2010	Change 2010-2014	Percent Change 2010-2014
Klamath Falls	21,500	20,840	660	3.2%	Portland	601,510	583,776	17,734	3.0%
La Grande	13,150	13,082	68	0.5%	Powers	700	689	11	1.6%
La Pine	1,670	1,653	17	1.0%	Prairie City	910	909	1	0.1%
Lafayette	3,825	3,742	83	2.2%	Prescott	55	55	0	0.0%
Lake Oswego	37,105	36,619	486	1.3%	Prineville	9,385	9,253	132	1.4%
Lakeside	1,705	1,699	6	0.4%	Rainier	1,905	1,895	10	0.5%
Lakeview	2,300	2,294	6	0.3%	Redmond	26,770	26,215	555	2.1%
Lebanon	15,740	15,518	222	1.4%	Reedsport	4,150	4,154	-4	-0.1%
Lexington	255	238	17	7.1%	Richland	175	156	19	12.2%
Lincoln City	8,400	7,930	470	5.9%	Riddle	1,185	1,185	0	0.0%
Lonerock	20	21	-1	-4.8%	Rivergrove	485	289	196	67.8%
Long Creek	195	197	-2	-1.0%	Rockaway Beach	1,325	1,312	13	1.0%
Lostine	215	213	2	0.9%	Rogue River	2,155	2,131	24	1.1%
Lowell	1,060	1,045	15	1.4%	Roseburg	22,510	21,181	1,329	6.3%
Lyons	1,160	1,161	-1	-0.1%	Rufus	280	249	31	12.4%
Madras	6,260	6,046	214	3.5%	Salem	159,265	154,637	4,628	3.0%
Malin	815	805	10	1.2%	Sandy	10,170	9,570	600	6.3%
Manzanita	615	598	17	2.8%	Scappoose	6,700	6,592	108	1.6%
Maupin	425	418	7	1.7%	Scio	830	838	-8	-1.0%
Maywood Park	750	752	-2	-0.3%	Scotts Mills	365	357	8	2.2%
McMinnville	32,705	32,187	518	1.6%	Seaside	6,560	6,457	103	1.6%
Medford	76,650	74,907	1,743	2.3%	Seneca	200	199	1	0.5%
Merrill	840	844	-4	-0.5%	Shady Cove	3,015	2,904	111	3.8%
Metolius	700	710	-10	-1.4%	Shaniko	35	36	-1	-2.8%
Mill City	1,875	1,855	20	1.1%	Sheridan	6,225	6,127	98	1.6%
Millersburg	1,505	1,329	176	13.2%	Sherwood	18,955	18,194	761	4.2%
Milton-Freewater	7,060	7,050	10	0.1%	Siletz	1,235	1,212	23	1.9%
Milwaukie	20,485	20,291	194	1.0%	Silverton	9,460	9,222	238	2.6%
Mitchell	130	130	0	0.0%	Sisters	2,190	2,038	152	7.5%
Molalla	8,820	8,108	712	8.8%	Sodaville	310	308	2	0.6%
Monmouth	9,620	9,534	86	0.9%	Spray	160	160	0	0.0%
Monroe	620	617	3	0.5%	Springfield	60,065	59,403	662	1.1%
Monument	130	128	2	1.6%	St. Helens	12,990	12,883	107	0.8%
Moro	325	324	1	0.3%	St. Paul	425	421	4	1.0%
Mosier	440	433	7	1.6%	Stanfield	2,115	2,043	72	3.5%
Mt. Angel	3,395	3,286	109	3.3%	Stayton	7,700	7,644	56	0.7%
Mt. Vernon	525	527	-2	-0.4%	Sublimity	2,760	2,681	79	2.9%
Myrtle Creek	3,465	3,439	26	0.8%	Summerville	135	135	0	0.0%
Myrtle Point	2,525	2,514	11	0.4%	Sumpter	205	204	1	0.5%
Nehalem	280	271	9	3.3%	Sutherlin	7,945	7,810	135	1.7%
Newberg	22,765	22,068	697	3.2%	Sweet Home	9,060	8,925	135	1.5%
Newport	10,095	9,989	106	1.1%	Talent	6,230	6,066	164	2.7%
North Bend	9,730	9,695	35	0.4%	Tangent	1,195	1,164	31	2.7%
North Plains	2,015	1,947	68	3.5%	The Dalles	14,480	13,620	860	6.3%
North Powder	445	439	6	1.4%	Tigard	49,140	48,035	1,105	2.3%
Nyssa	3,285	3,267	18	0.6%	Tillamook	4,880	4,935	-55	-1.1%
Oakland	935	927	8	0.9%	Toledo	3,485	3,465	20	0.6%
Oakridge	3,220	3,205	15	0.5%	Troutdale	16,020	15,962	58	0.4%
Ontario	11,465	11,366	99	0.9%	Tualatin	26,925	26,054	871	3.3%
Oregon City	33,760	31,859	1,901	6.0%	Turner	1,900	1,854	46	2.5%
Paisley	245	243	2	0.8%	Ukiah	245	186	59	31.7%
Pendleton	16,700	16,612	88	0.5%	Umatilla	7,050	6,906	144	2.1%
Philomath	4,630	4,584	46	1.0%	Union	2,150	2,121	29	1.4%
Phoenix	4,580	4,538	42	0.9%	Unity	70	71	-1	-1.4%
Pilot Rock	1,505	1,502	3	0.2%	Vale	1,875	1,874	1	0.1%
Port Orford	1,135	1,133	2	0.2%	Veneta	4,690	4,561	129	2.8%

**Table 7. Alphabetical Listing of Incorporated Cities with Population for July 1, 2014,
Census 2010 Population and Change since Census 2010.**

Prepared by Population Research Center, PSU, April 2015.

City	Estimate July 1, 2014	Census April 1, 2010	Change 2010-2014	Percent Change 2010-2014	City	Estimate July 1, 2014	Census April 1, 2010	Change 2010-2014	Percent Change 2010-2014
Vernonia	2,065	2,151	-86	-4.0%					
Waldport	2,060	2,033	27	1.3%					
Wallowa	810	808	2	0.2%					
Warrenton	5,175	4,989	186	3.7%					
Wasco	415	410	5	1.2%					
Waterloo	230	229	1	0.4%					
West Linn	25,540	25,109	431	1.7%					
Westfir	255	253	2	0.8%					
Weston	685	667	18	2.7%					
Wheeler	405	414	-9	-2.2%					
Willamina	2,045	2,025	20	1.0%					
Wilsonville	21,980	19,509	2,471	12.7%					
Winston	5,410	5,379	31	0.6%					
Wood Village	3,905	3,878	27	0.7%					
Woodburn	24,455	24,080	375	1.6%					
Yachats	720	690	30	4.3%					
Yamhill	1,050	1,024	26	2.5%					
Yoncalla	1,060	1,047	13	1.2%					

*A local enumeration was conducted after Census 2010.

Table 8. Population Added to Incorporated Cities Due to Annexations: April 1, 2010 - July 1, 2014

Prepared by Population Research Center, PSU, April 2015.

Adair Village	0	Depoe Bay	0	Independence	1	Myrtle Creek	0	Springfield	15
Adams	0	Detroit	0	Ione	0	Myrtle Point	0	St. Helens	6
Adrian	0	Donald	0	Irrigon	0	Nehalem	0	St. Paul	0
Albany	0	Drain	0	Island City	0	Newberg	3	Stanfield	2
Amity	0	Dufur	0	Jacksonville	0	Newport	0	Stayton	2
Antelope	0	Dundee	0	Jefferson	0	North Bend	0	Sublimity	0
Arlington	0	Dunes City	0	John Day	6	North Plains	0	Summerville	0
Ashland	0	Durham	0	Johnson City	0	North Powder	0	Sumpter	0
Astoria	0	Eagle Point	0	Jordan Valley	0	Nyssa	0	Sutherlin	0
Athena	0	Echo	0	Joseph	0	Oakland	0	Sweet Home	4
Aumsville	4	Elgin	0	Junction City	0	Oakridge	0	Talent	0
Aurora	0	Elkton	0	Keizer	4	Ontario	40	Tangent	0
Baker City	0	Enterprise	0	King City	0	Oregon City	0	The Dalles	811
Bandon	0	Estacada	0	Klamath Falls	2	Paisley	0	Tigard	46
Banks	0	Eugene	6	La Grande	7	Pendleton	0	Tillamook	0
Barlow	0	Fairview	0	La Pine	0	Philomath	2	Toledo	0
Bay City	0	Falls City	0	Lafayette	0	Phoenix	0	Troutdale	0
Beaverton	378	Florence	0	Lake Oswego	11	Pilot Rock	0	Tualatin	2
Bend	0	Forest Grove	262	Lakeside	0	Port Orford	0	Turner	0
Boardman	0	Fossil	0	Lakeview	1	Portland	2	Ukiah	0
Bonanza	0	Garibaldi	0	Lebanon	2	Powers	0	Umatilla	0
Brookings	0	Gaston	0	Lexington	0	Prairie City	0	Union	0
Brownsville	0	Gates	0	Lincoln City	361	Prescott	0	Unity	0
Burns	0	Gearhart	0	Lonerock	0	Prineville	2	Vale	0
Butte Falls	0	Gervais	0	Long Creek	0	Rainier	0	Veneta	0
Canby	4	Gladstone	0	Lostine	0	Redmond	0	Vernonia	0
Cannon Beach	0	Glendale	0	Lowell	0	Reedsport	0	Waldport	0
Canyon City	0	Gold Beach	0	Lyons	0	Richland	7	Wallowa	0
Canyonville	0	Gold Hill	0	Madras	161	Riddle	0	Warrenton	0
Carlton	0	Granite	0	Malin	10	Rivergrove	0	Wasco	0
Cascade Locks	0	Grants Pass	0	Manzanita	0	Rockaway Beach	0	Waterloo	0
Cave Junction	0	Granite	0	Maupin	0	Rogue River	0	West Linn	0
Central Point	0	Grass Valley	0	Maywood Park	0	Roseburg	631	Westfir	0
Chiloquin	0	Greenhorn	0	McMinnville	0	Rufus	0	Weston	0
Clatskanie	0	Gresham	2	Medford	1	Salem	150	Wheeler	0
Coburg	0	Haines	0	Merrill	0	Sandy	0	Willamina	0
Columbia City	0	Halfway	0	Metolius	0	Scappoose	0	Wilsonville	2
Condon	0	Halsey	0	Mill City	0	Scio	0	Winston	4
Coos Bay	0	Happy Valley	38	Millersburg	0	Scotts Mills	0	Wood Village	0
Coquille	0	Harrisburg	0	Milton-Freewater	0	Seaside	0	Woodburn	0
Cornelius	0	Helix	0	Milwaukie	184	Seneca	0	Yachats	0
Corvallis	4	Heppner	0	Mitchell	0	Shady Cove	0	Yamhill	0
Cottage Grove	0	Hermiston	23	Molalla	0	Shaniko	0	Yoncalla	0
Cove	0	Hillsboro	236	Monmouth	0	Sheridan	0		
Creswell	2	Hines	0	Monroe	0	Sherwood	0		
Culver	0	Hood River	5	Monument	0	Siletz	0		
Dallas	23	Hubbard	0	Moro	0	Silverton	0		
Damascus	0	Huntington	0	Mosier	0	Sisters	0		
Dayton	0	Idanha	0	Mt. Angel	0	Sodaville	0		
Dayville	0	Imbler	0	Mt. Vernon	0	Spray	0		

Table 9. Population Estimates by Age and Sex for Oregon and Its Counties: July 1, 2014

Prepared by Population Research Center, PSU, April 2015.

Age Group	Total Population																				All Ages
	0-4	5-9	10-14	15-17	18-19	20-24	25-29	30-34	35-39	40-44	45-49	50-54	55-59	60-64	65-69	70-74	75-79	80-84	85+		
OREGON	240,540	235,498	242,326	148,155	104,299	254,730	270,814	268,298	264,242	257,039	259,236	264,602	268,604	251,574	207,292	154,903	109,835	78,444	82,281	3,962,710	
BAKER	886	798	903	625	292	605	754	799	853	875	987	1,140	1,329	1,404	1,310	1,055	735	517	458	16,325	
BENTON	3,573	3,907	4,375	3,174	5,663	13,816	6,398	5,077	4,506	4,432	4,797	5,235	5,591	5,169	4,239	3,078	2,287	1,607	1,816	88,740	
CLACKAMAS	21,550	23,994	26,405	16,445	9,228	20,223	21,844	22,897	24,879	26,606	28,463	29,331	29,509	26,776	21,105	15,266	10,663	7,555	8,787	391,525	
CLATSOP	2,135	1,983	2,102	1,339	952	2,136	2,045	2,175	2,201	2,129	2,401	2,563	3,054	2,977	2,617	1,780	1,227	866	810	37,495	
COLUMBIA	2,718	2,947	3,429	2,059	1,105	2,311	2,418	3,104	3,119	3,507	3,540	3,930	3,894	3,724	2,965	2,063	1,473	890	878	50,075	
COOS	3,402	3,087	3,288	2,140	1,441	2,885	3,102	3,403	3,254	3,295	3,804	4,379	5,025	5,247	4,800	3,955	2,796	1,943	1,655	62,900	
CROOK	1,045	1,137	1,269	765	365	835	884	1,070	1,059	1,163	1,331	1,460	1,620	1,792	1,697	1,313	884	574	517	20,780	
CURRY	834	809	996	659	332	728	870	859	1,014	1,016	1,322	1,569	1,994	2,375	2,254	1,879	1,219	848	777	22,355	
DESCHUTES	10,160	10,326	10,721	6,262	3,573	8,356	10,048	10,585	11,331	11,236	11,234	11,367	11,425	11,526	9,796	7,223	4,736	3,293	3,201	166,400	
DOUGLAS	5,672	5,544	6,205	4,058	2,401	5,203	5,209	5,735	5,632	5,957	6,623	7,568	8,441	8,857	8,054	6,639	4,879	3,378	3,329	109,385	
GILLIAM	108	75	105	69	24	57	72	100	84	111	132	156	184	185	164	121	81	64	82	1,975	
GRANT	317	315	401	247	117	249	282	345	365	358	447	506	649	689	677	528	405	255	273	7,425	
HARNEY	392	404	435	316	161	278	358	401	383	391	450	502	579	605	542	399	304	182	183	7,265	
HOOD RIVER	1,504	1,658	1,704	1,028	566	1,229	1,419	1,481	1,541	1,713	1,717	1,770	1,684	1,358	1,093	724	603	421	518	23,730	
JACKSON	12,250	11,412	12,634	7,697	4,996	11,824	11,871	12,005	11,972	12,270	13,042	14,060	15,128	15,093	13,124	10,228	7,548	5,471	5,751	208,375	
JEFFERSON	1,517	1,316	1,516	922	507	1,157	1,267	1,252	1,287	1,357	1,510	1,499	1,608	1,588	1,382	1,078	680	450	313	22,205	
JOSEPHINE	4,208	4,180	4,838	3,047	1,737	3,670	3,836	4,268	4,176	4,411	5,017	5,653	6,263	7,014	6,295	5,246	3,785	2,682	2,779	83,105	
KLAMATH	3,916	3,712	4,069	2,549	1,738	4,012	3,646	3,690	3,754	3,837	4,265	4,486	5,023	4,935	4,425	3,395	2,490	1,573	1,395	66,910	
LAKE	358	340	413	312	106	286	346	441	442	538	552	627	657	707	645	464	363	213	181	7,990	
LANE	17,703	17,841	19,493	12,917	12,361	31,136	24,636	22,983	21,100	21,093	21,844	23,382	25,132	24,074	20,369	15,538	10,772	8,042	8,391	358,805	
LINCOLN	2,345	1,991	2,173	1,402	839	1,882	2,171	2,423	2,399	2,428	2,784	3,382	4,175	4,587	4,178	3,150	2,058	1,349	1,174	46,890	
LINN	7,802	7,607	8,030	4,718	2,979	6,825	7,275	7,394	7,520	7,107	7,717	7,871	8,359	7,782	6,759	5,171	3,664	2,620	2,509	119,705	
MALHEUR	2,295	2,110	2,133	1,272	925	2,053	2,057	1,998	1,974	1,914	1,901	1,914	1,892	1,768	1,604	1,284	966	657	753	31,470	
MARION	24,073	23,347	23,001	14,011	9,652	22,015	22,328	21,531	20,607	19,961	19,991	20,191	19,955	18,316	14,916	11,454	8,247	6,123	6,434	326,150	
MORROW	769	849	917	554	321	613	657	648	738	685	726	787	768	777	590	463	312	190	159	11,525	
MULTNOMAH	47,071	41,896	39,798	23,151	18,209	54,120	70,811	68,714	64,081	56,970	51,788	49,685	47,480	40,987	30,970	21,615	15,079	11,007	12,344	765,775	
POLK	5,098	5,000	5,441	3,238	2,839	5,982	4,641	4,390	4,613	4,617	4,606	4,807	4,920	4,686	4,080	3,127	2,387	1,651	1,614	77,735	
SHERMAN	101	85	100	60	29	64	76	101	103	85	124	130	129	162	122	114	89	60	51	1,785	
TILLAMOOK	1,462	1,296	1,417	896	497	1,024	1,191	1,266	1,371	1,400	1,504	1,832	2,125	2,218	2,082	1,548	1,071	723	558	25,480	
UMATILLA	5,834	5,639	5,618	3,408	2,184	4,973	5,270	4,993	5,078	4,898	4,900	4,946	5,017	4,444	3,657	2,716	1,948	1,450	1,366	78,340	
UNION	1,749	1,638	1,602	1,037	912	1,826	1,562	1,348	1,411	1,402	1,538	1,677	1,855	1,828	1,586	1,232	907	649	727	26,485	
WALLOWA	419	380	360	214	98	217	262	363	309	371	399	496	604	657	613	476	332	246	252	7,070	
WASCO	1,715	1,595	1,622	1,042	601	1,349	1,494	1,504	1,498	1,494	1,526	1,726	1,848	1,911	1,594	1,207	918	624	836	26,105	
WASHINGTON	38,969	39,426	37,645	22,120	13,050	33,799	43,543	42,675	43,001	40,777	39,596	37,132	34,000	29,095	21,744	15,607	11,011	8,186	9,090	560,465	
WHEELER	71	55	77	55	20	36	58	65	69	55	84	92	133	115	148	102	94	58	51	1,440	
YAMHILL	6,520	6,798	7,092	4,346	3,479	6,956	6,114	6,213	6,520	6,581	6,574	6,748	6,557	6,148	5,096	3,664	2,822	2,027	2,270	102,525	

Table 9. Population Estimates by Age and Sex for Oregon and Its Counties: July 1, 2014

Prepared by Population Research Center, PSU, April 2015.

Male Population																				
Age Group	0-4	5-9	10-14	15-17	18-19	20-24	25-29	30-34	35-39	40-44	45-49	50-54	55-59	60-64	65-69	70-74	75-79	80-84	85+	All Ages
OREGON	123,383	120,028	124,193	76,174	53,067	129,120	136,436	135,162	133,061	129,181	129,306	130,475	130,498	121,669	99,299	73,469	49,892	33,383	28,755	1,956,552
BAKER	420	414	454	337	162	321	406	436	469	456	521	558	656	685	664	517	376	241	178	8,270
BENTON	1,771	1,867	2,236	1,630	2,838	7,425	3,493	2,577	2,247	2,198	2,340	2,514	2,717	2,538	2,038	1,488	1,052	690	664	44,322
CLACKAMAS	11,289	12,180	13,665	8,381	4,854	10,381	11,001	11,362	12,283	13,093	13,967	14,381	14,336	12,959	10,093	7,102	4,766	3,087	2,866	192,046
CLATSOP	1,003	1,004	1,021	724	497	1,138	1,053	1,162	1,120	1,085	1,205	1,265	1,476	1,454	1,268	894	585	367	296	18,616
COLUMBIA	1,406	1,495	1,810	1,081	586	1,204	1,203	1,542	1,532	1,752	1,772	1,960	1,951	1,827	1,536	999	703	380	314	25,051
COOS	1,748	1,545	1,669	1,069	741	1,465	1,575	1,719	1,664	1,642	1,909	2,169	2,433	2,548	2,313	1,937	1,342	884	694	31,067
CROOK	543	575	659	395	193	429	429	519	521	571	635	731	754	868	862	676	426	283	201	10,272
CURRY	446	420	531	349	183	383	458	431	508	458	651	755	987	1,133	1,144	913	599	415	309	11,072
DESCHUTES	5,223	5,299	5,527	3,238	1,852	4,257	5,061	5,290	5,660	5,540	5,479	5,491	5,324	5,573	4,805	3,635	2,214	1,532	1,144	82,144
DOUGLAS	2,933	2,794	3,195	2,101	1,286	2,676	2,594	2,905	2,779	2,931	3,264	3,738	4,069	4,377	3,988	3,283	2,297	1,562	1,236	54,009
GILLIAM	61	34	63	38	15	35	41	57	50	60	68	86	83	104	72	62	38	28	24	1,021
GRANT	151	152	192	133	68	122	141	176	190	164	222	227	325	334	362	279	210	116	112	3,676
HARNEY	211	212	221	178	87	151	159	214	186	184	211	250	289	313	292	211	157	84	72	3,685
HOOD RIVER	755	897	874	522	312	667	732	742	783	824	871	878	857	700	537	351	283	163	154	11,902
JACKSON	6,255	5,780	6,412	3,870	2,468	5,862	5,994	5,913	6,058	6,083	6,462	6,858	7,272	7,152	6,284	4,910	3,453	2,346	2,089	101,519
JEFFERSON	820	660	791	467	263	624	669	688	716	732	808	781	849	795	704	593	348	215	119	11,642
JOSEPHINE	2,132	2,105	2,437	1,618	923	1,823	1,996	2,139	2,119	2,160	2,460	2,715	2,939	3,352	3,001	2,540	1,752	1,184	1,020	40,414
KLAMATH	1,956	1,952	2,044	1,316	902	2,029	1,827	1,852	1,883	1,926	2,127	2,195	2,449	2,433	2,200	1,667	1,202	718	521	33,202
LAKE	163	181	198	161	59	162	188	265	253	317	317	332	370	357	353	253	184	102	84	4,301
LANE	8,970	9,007	10,044	6,647	6,043	16,142	12,508	11,739	10,553	10,558	10,721	11,328	11,945	11,619	9,616	7,367	4,972	3,387	2,953	176,120
LINCOLN	1,178	1,022	1,088	770	455	1,008	1,121	1,233	1,252	1,164	1,375	1,586	1,926	2,139	1,962	1,536	944	629	422	22,812
LINN	4,108	3,937	4,092	2,384	1,522	3,367	3,604	3,633	3,761	3,550	3,828	3,892	4,112	3,791	3,262	2,432	1,658	1,170	910	59,013
MALHEUR	1,184	1,087	1,063	663	497	1,213	1,222	1,199	1,176	1,128	1,081	1,098	988	955	800	618	474	292	303	17,040
MARION	12,480	11,925	11,845	7,218	4,986	11,416	11,375	11,069	10,338	10,137	10,017	9,997	9,688	8,772	6,918	5,323	3,633	2,537	2,185	161,856
MORROW	404	423	469	280	177	338	358	320	387	352	384	395	376	409	287	228	158	103	68	5,914
MULTNOMAH	24,081	21,346	20,335	11,833	9,023	26,229	34,826	34,386	32,558	29,106	26,326	24,902	23,592	20,023	14,615	9,851	6,449	4,314	3,949	377,746
POLK	2,579	2,601	2,758	1,678	1,327	2,888	2,289	2,130	2,253	2,249	2,314	2,295	2,334	2,234	1,915	1,483	1,089	732	620	37,767
SHERMAN	48	42	52	33	14	34	34	55	61	43	66	65	63	87	59	52	45	26	29	908
TILLAMOOK	738	647	746	471	289	557	636	654	707	733	762	896	1,042	1,091	1,016	778	517	331	230	12,842
UMATILLA	3,040	2,787	2,911	1,764	1,150	2,784	2,977	2,798	2,773	2,683	2,625	2,579	2,630	2,246	1,820	1,382	914	639	514	41,017
UNION	899	861	801	577	469	860	824	686	678	727	711	824	927	899	797	624	410	277	239	13,088
WALLOWA	195	169	167	106	50	99	131	168	160	181	175	241	277	333	301	265	170	120	110	3,418
WASCO	844	808	794	563	323	678	785	756	758	746	740	855	908	960	828	590	425	262	303	12,927
WASHINGTON	19,899	20,258	19,361	11,303	6,703	16,823	21,446	21,102	21,241	20,250	19,507	18,238	16,297	13,592	10,045	6,842	4,698	3,262	2,992	273,859
WHEELER	41	30	38	32	16	19	33	43	31	24	36	42	64	50	80	43	47	27	19	716
YAMHILL	3,408	3,513	3,630	2,245	1,733	3,509	3,248	3,200	3,354	3,370	3,350	3,359	3,195	2,968	2,461	1,744	1,303	877	810	51,276

Table 9. Population Estimates by Age and Sex for Oregon and Its Counties: July 1, 2014

Prepared by Population Research Center, PSU, April 2015.

Female Population																				
Age Group	0-4	5-9	10-14	15-17	18-19	20-24	25-29	30-34	35-39	40-44	45-49	50-54	55-59	60-64	65-69	70-74	75-79	80-84	85+	All Ages
OREGON	117,157	115,470	118,132	71,981	51,232	125,611	134,378	133,136	131,181	127,859	129,930	134,127	138,105	129,904	107,993	81,435	59,943	45,061	53,526	2,006,158
BAKER	466	385	450	288	130	284	348	363	384	418	466	582	673	719	646	539	359	276	280	8,055
BENTON	1,801	2,040	2,139	1,544	2,825	6,391	2,905	2,501	2,260	2,234	2,457	2,721	2,874	2,632	2,201	1,590	1,235	917	1,152	44,418
CLACKAMAS	10,261	11,813	12,740	8,064	4,374	9,841	10,844	11,535	12,596	13,513	14,495	14,950	15,174	13,817	11,012	8,164	5,897	4,468	5,921	199,479
CLATSOP	1,132	979	1,082	615	455	998	992	1,012	1,082	1,044	1,196	1,298	1,579	1,524	1,349	886	642	499	514	18,879
COLUMBIA	1,313	1,452	1,618	979	520	1,107	1,215	1,562	1,587	1,754	1,769	1,971	1,943	1,897	1,428	1,064	770	510	565	25,024
COOS	1,654	1,542	1,619	1,071	700	1,421	1,527	1,684	1,589	1,652	1,895	2,209	2,592	2,699	2,487	2,018	1,454	1,059	961	31,833
CROOK	501	562	610	371	172	405	455	551	538	593	696	730	866	924	835	637	458	290	315	10,508
CURRY	388	389	465	310	149	345	413	428	506	558	672	815	1,007	1,241	1,110	966	621	433	468	11,283
DESCHUTES	4,938	5,027	5,194	3,024	1,721	4,100	4,988	5,295	5,671	5,697	5,755	5,876	6,100	5,954	4,990	3,588	2,522	1,761	2,057	84,256
DOUGLAS	2,739	2,751	3,010	1,957	1,115	2,527	2,615	2,831	2,853	3,026	3,359	3,830	4,372	4,480	4,066	3,355	2,582	1,816	2,093	55,376
GILLIAM	47	41	42	31	9	22	32	43	33	51	64	70	101	81	92	59	43	35	58	954
GRANT	166	163	209	114	49	127	140	169	175	195	225	279	324	355	315	249	195	139	161	3,749
HARNEY	180	192	215	138	74	128	199	187	198	206	238	251	289	291	250	188	146	98	111	3,580
HOOD RIVER	749	761	830	506	254	561	687	739	758	889	846	892	827	658	556	373	321	257	364	11,828
JACKSON	5,995	5,632	6,222	3,827	2,528	5,962	5,877	6,092	5,915	6,187	6,581	7,202	7,855	7,941	6,840	5,318	4,095	3,126	3,662	106,856
JEFFERSON	697	656	725	455	243	532	599	564	571	625	702	718	759	793	678	485	332	235	193	10,563
JOSEPHINE	2,075	2,075	2,402	1,429	814	1,846	1,840	2,129	2,057	2,251	2,558	2,938	3,323	3,661	3,294	2,706	2,033	1,498	1,760	42,691
KLAMATH	1,959	1,760	2,024	1,233	836	1,983	1,819	1,838	1,871	1,911	2,138	2,290	2,574	2,502	2,225	1,728	1,288	855	873	33,708
LAKE	195	159	215	151	47	124	158	175	189	221	235	295	287	350	292	210	178	111	96	3,689
LANE	8,733	8,834	9,449	6,269	6,318	14,994	12,128	11,244	10,546	10,534	11,123	12,055	13,187	12,454	10,753	8,171	5,799	4,655	5,438	182,685
LINCOLN	1,166	969	1,085	632	384	874	1,049	1,190	1,147	1,264	1,410	1,796	2,249	2,448	2,216	1,614	1,113	721	752	24,078
LINN	3,694	3,670	3,937	2,334	1,456	3,458	3,671	3,760	3,759	3,557	3,889	3,979	4,247	3,990	3,496	2,740	2,006	1,449	1,599	60,692
MALHEUR	1,111	1,023	1,071	609	429	840	835	799	798	786	820	816	904	813	804	666	492	365	450	14,430
MARION	11,593	11,422	11,156	6,793	4,666	10,599	10,952	10,463	10,269	9,824	9,974	10,194	10,266	9,544	7,997	6,131	4,614	3,586	4,249	164,294
MORROW	365	426	448	275	144	275	299	328	351	333	343	393	392	368	304	234	154	87	91	5,611
MULTNOMAH	22,990	20,550	19,462	11,318	9,186	27,891	35,984	34,328	31,523	27,864	25,461	24,782	23,888	20,964	16,355	11,764	8,630	6,692	8,395	388,029
POLK	2,519	2,399	2,683	1,560	1,512	3,094	2,352	2,260	2,360	2,368	2,292	2,512	2,586	2,452	2,165	1,644	1,298	919	994	39,968
SHERMAN	53	43	48	27	15	30	43	46	42	42	58	65	66	75	63	63	44	34	22	877
TILLAMOOK	724	648	671	426	207	467	554	612	664	667	741	936	1,084	1,126	1,067	770	554	392	329	12,638
UMATILLA	2,794	2,853	2,707	1,644	1,034	2,189	2,292	2,195	2,305	2,215	2,275	2,367	2,387	2,198	1,837	1,334	1,033	812	852	37,323
UNION	850	777	801	460	443	967	738	663	733	675	826	853	928	929	788	608	496	373	488	13,397
WALLOWA	224	211	193	108	48	119	131	195	149	190	224	256	327	324	312	211	163	126	142	3,652
WASCO	871	787	827	479	279	671	709	748	740	747	786	871	940	951	766	616	494	362	533	13,178
WASHINGTON	19,070	19,168	18,283	10,817	6,347	16,976	22,097	21,573	21,760	20,527	20,089	18,895	17,702	15,503	11,699	8,764	6,314	4,924	6,098	286,606
WHEELER	30	25	39	23	5	18	25	22	37	31	49	50	69	66	67	59	47	31	32	724
YAMHILL	3,112	3,286	3,462	2,101	1,747	3,447	2,866	3,013	3,166	3,210	3,224	3,389	3,363	3,179	2,635	1,921	1,519	1,150	1,459	51,249

Table 10. Population Estimates by Age Group (less than 18 Years, 18-64 Years, and 65 Years and Older) for Oregon and Its Counties: July 1, 2014

Prepared by Population Research Center, PSU, April 2015.

	Ages 0-17		Ages 18-64		Ages 65 and over		Total Population
	Population	% of Total Population	Population	% of Total Population	Population	% of Total Population	
OREGON	866,518	21.9%	2,463,436	62.2%	632,755	16.0%	3,962,710
Counties							
BAKER	3,213	19.7%	9,037	55.4%	4,075	25.0%	16,325
BENTON	15,029	16.9%	60,684	68.4%	13,027	14.7%	88,740
CLACKAMAS	88,394	22.6%	239,755	61.2%	63,376	16.2%	391,525
CLATSOP	7,560	20.2%	22,635	60.4%	7,301	19.5%	37,495
COLUMBIA	11,154	22.3%	30,652	61.2%	8,269	16.5%	50,075
COOS	11,916	18.9%	35,834	57.0%	15,150	24.1%	62,900
CROOK	4,217	20.3%	11,580	55.7%	4,983	24.0%	20,780
CURRY	3,298	14.8%	12,079	54.0%	6,978	31.2%	22,355
DESCHUTES	37,469	22.5%	100,682	60.5%	28,248	17.0%	166,400
DOUGLAS	21,479	19.6%	61,626	56.3%	26,280	24.0%	109,385
GILLIAM	357	18.1%	1,106	56.0%	512	25.9%	1,975
GRANT	1,280	17.2%	4,007	54.0%	2,138	28.8%	7,425
HARNEY	1,547	21.3%	4,108	56.5%	1,610	22.2%	7,265
HOOD RIVER	5,894	24.8%	14,478	61.0%	3,358	14.2%	23,730
JACKSON	43,993	21.1%	122,260	58.7%	42,121	20.2%	208,375
JEFFERSON	5,271	23.7%	13,032	58.7%	3,902	17.6%	22,205
JOSEPHINE	16,273	19.6%	46,045	55.4%	20,787	25.0%	83,105
KLAMATH	14,245	21.3%	39,386	58.9%	13,279	19.8%	66,910
LAKE	1,423	17.8%	4,702	58.9%	1,865	23.3%	7,990
LANE	67,954	18.9%	227,739	63.5%	63,112	17.6%	358,805
LINCOLN	7,911	16.9%	27,070	57.7%	11,909	25.4%	46,890
LINN	28,156	23.5%	70,827	59.2%	20,722	17.3%	119,705
MALHEUR	7,810	24.8%	18,396	58.5%	5,264	16.7%	31,470
MARION	84,431	25.9%	194,545	59.6%	47,174	14.5%	326,150
MORROW	3,089	26.8%	6,722	58.3%	1,714	14.9%	11,525
MULTNOMAH	151,916	19.8%	522,844	68.3%	91,015	11.9%	765,775
POLK	18,776	24.2%	46,100	59.3%	12,859	16.5%	77,735
SHERMAN	346	19.4%	1,002	56.1%	437	24.5%	1,785
TILLAMOOK	5,070	19.9%	14,427	56.6%	5,983	23.5%	25,480
UMATILLA	20,500	26.2%	46,703	59.6%	11,137	14.2%	78,340
UNION	6,025	22.7%	15,359	58.0%	5,101	19.3%	26,485
WALLOWA	1,374	19.4%	3,777	53.4%	1,920	27.2%	7,070
WASCO	5,975	22.9%	14,951	57.3%	5,179	19.8%	26,105
WASHINGTON	138,159	24.7%	356,668	63.6%	65,637	11.7%	560,465
WHEELER	258	18.0%	728	50.5%	454	31.5%	1,440
YAMHILL	24,756	24.1%	61,890	60.4%	15,879	15.5%	102,525