

Portland State University

PDXScholar

School District Enrollment Forecast Reports

Population Research Center

6-1-2006

Gresham-Barlow School District 10J: Enrollment Forecasts for Elementary and Middle Schools and School Attendance Areas, 2006 to 2015

Portland State University. Population Research Center

Irina V. Sharkova
Portland State University

Kenneth Radin
Portland State University

Follow this and additional works at: <https://pdxscholar.library.pdx.edu/enrollmentforecasts>



Part of the [Urban Studies and Planning Commons](#)

Let us know how access to this document benefits you.

Recommended Citation

Portland State University. Population Research Center; Sharkova, Irina V.; and Radin, Kenneth, "Gresham-Barlow School District 10J: Enrollment Forecasts for Elementary and Middle Schools and School Attendance Areas, 2006 to 2015" (2006). *School District Enrollment Forecast Reports*. 39.
<https://pdxscholar.library.pdx.edu/enrollmentforecasts/39>

This Technical Report is brought to you for free and open access. It has been accepted for inclusion in School District Enrollment Forecast Reports by an authorized administrator of PDXScholar. Please contact us if we can make this document more accessible: pdxscholar@pdx.edu.

GRESHAM-BARLOW SCHOOL DISTRICT 10J
ENROLLMENT FORECASTS FOR
ELEMENTARY AND MIDDLE SCHOOLS AND SCHOOL
ATTENDANCE AREAS, 2006 TO 2015

Prepared by
Population Research Center
Portland State University

June 2006

GRESHAM-BARLOW SCHOOL DISTRICT 10J
ENROLLMENT FORECASTS FOR
ELEMENTARY AND MIDDLE SCHOOLS AND SCHOOL
ATTENDANCE AREAS, 2006 TO 2015

Prepared by
Population Research Center
Portland State University
www.pdx.edu/prc

June 2006

Project Staff:
Irina V. Sharkova, Population GIS Manager
Kenneth Radin, GIS Analyst

TABLE OF CONTENTS

Acknowledgements.....	2
List of Tables and Figures.....	3
Introduction.....	4
1. Demographic Trends by Attendance Area, 1990-2005.....	5
2. Enrollment Projections by Elementary and Middle School Attendance Area of Residence.....	7
3. Enrollment Projections by Elementary and Middle School.....	13
4. Methods and Projection Assumptions.....	16
Conclusions and Recommendations.....	22
References	23
Appendix. Detailed Results	24

ACKNOWLEDGEMENTS

This study was prepared by staff of the Population Research Center, Nohad A. Toulan School of Urban Studies & Planning at Portland State University. Dr. Irina V. Sharkova developed the enrollment forecasts and prepared the report. Kenneth Radin collected spatial and attribute data and prepared the datasets used in the analysis. Dr. Sharkova and Mr. Radin would like to thank Gresham-Barlow School District's employees Michelle Granger-Moore (Chief Finance Officer), Ruth Knight (Administrative Secretary), and Darrin A. King (Database & Email Manager) for help with data collection and interpretation, as well as other District staff for assistance with this project. Thanks also go to Stephanie Betteridge, GIS Specialist with the City of Gresham, and Andrea Westersund, Manager of Multnomah County GIS, for their assistance with data collection, and to staff of the Metro Data Resource Center for preparation and distribution of regional spatial data, without which much of this study would have been impossible.

List of Tables and Figures

Tables

1. Projected K-12 Enrollment Growth by ESAA of Residence, 2006-2015.....9
2. Projected K-12 Enrollment Growth by MSAA of Residence, 2006-2015.....11
3. Projected Enrollment Growth by Elementary School, 2006-2015.....14
4. Projected Enrollment Growth by Middle School, 2006-2015.....15

Figures

1. Households by Elementary School Attendance Area, 1990-2005.....5
2. Households by Middle School Attendance Area, 1990-2005.....6
3. Projected Enrollment by Grade Level and ESAA, 2006-2015 (Map).....8
4. Projected K-12 Enrollment Growth by ESAA, Gresham HSAA, 2006-2015.....10
5. Projected K-12 Enrollment Growth by ESAA, Barlow HSAA, 2006-2015.....11
6. Projected K-12 Enrollment Growth by MSAA, 2006-201512
7. Recent Historical and Projected Household Growth by ESAA (Map)17
8. Projected Household Growth by ESAA, 2006-201518

Appendix: Detailed Results

Projections for ESAAs in Barlow High School Attendance Area.....A1 - A6
Projections for ESAAs in Gresham High School Attendance AreaA7 - A12
Projections for MSAA'sA13 - A18
ESAA Growth Assumptions.....A19
MSAA Growth Assumptions.....A20
Projections by School.....A21 - A26
Rates of Change by School.....A27 - A32
Enrollment Growth by Grade & School (Charts).....A33 - A38
2002-2004 Average Enrollment by ESAA of Residence.....A39
2002-2004 Average Enrollment by MSAA of Residence.....A40
Births by Selected Ethnicity by ESAA, 1990-2003.....A41
Births by Selected Ethnicity by MSAA, 1990-2003.....A42

Introduction

This report presents the results of a study conducted by the Population Research Center (PRC) to address the long-range planning needs of the Gresham-Barlow School District (“District”). It provides annual enrollment projections by grade for the District's eleven elementary and five middle school attendance areas from 2006 to 2015. It also provides annual enrollment projections by grade for elementary and middle schools. The projections correspond to the medium growth District-wide scenario developed by PRC in the 2004 study.

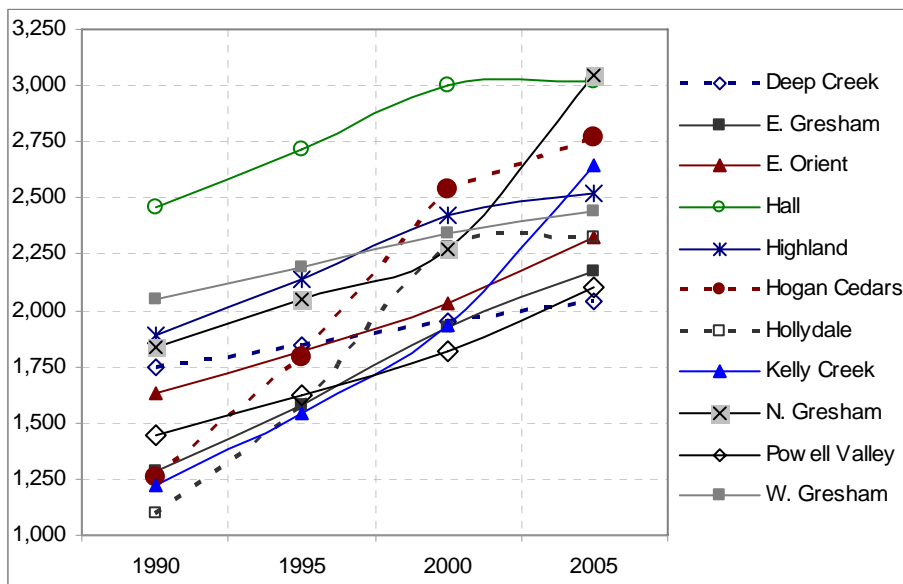
The report begins with an overview of recent population and housing trends in the District's elementary and middle school attendance areas as they relate to changes in school enrollment. Next, results of annual enrollment projections for the District's eleven elementary and five middle school attendance areas from 2006 to 2015 are presented. The following section introduces annual enrollment projections for elementary and middle schools. A section discussing the methodology and assumptions used to develop the projections follows. Finally, conclusions are drawn and recommendations are offered, followed by a list of references used in the study. Detailed tables and figures showing projected grade-level enrollment by school attendance area and by school, along with other relevant information, are provided in the Appendix.

I. Demographic Trends by Attendance Area, 1990-2005

Over the last 15 years all attendance areas of the Gresham-Barlow School District have experienced growth in housing units, households, and total population, albeit at different rates (Fig. 1 & 2). Growth rates have varied both by attendance area and by the period.

District-wide, the growth was faster at an average annual rate of 3.7 percent¹ during the years 1990 to 2000; it slowed down to 2.4 percent a year during the years 2000-2005. The growth resulted in 6,600 additional households by the year 2000, up from 17,920 households in 1990, and another 2,900 households added by the year 2005. Four elementary school attendance areas (ESAAs) grew faster in 1990-2000 than the District as a whole: Hollydale ESAA at an average annual rate of 10.8 percent a year, Hogan Cedars ESAA at 10.1 percent a year, Kelly Creek ESAA at 5.8 percent a year, and East Gresham ESAA at 4.9 percent a year. Hollydale and Hogan Cedars ESAAs doubled their number of households during this period, from approximately 1,100-1,260 households in 1990 to 2,300-2,540 households in 2000. Seven ESAAs experienced lower growth rates than the District as a whole, ranging from an average annual rate of 1.2 percent a year in Deep Creek ESAA to 2.8 percent a year in Highland ESAA.

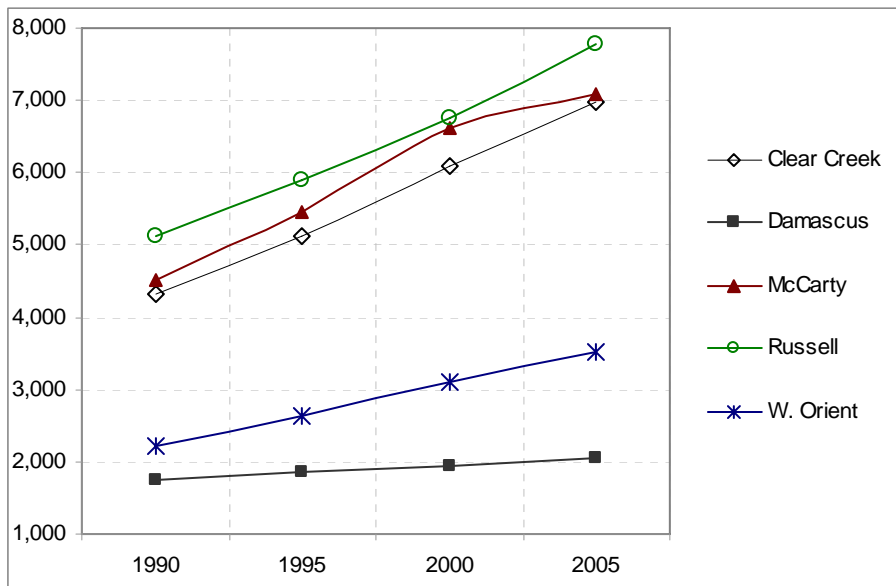
Fig. 1. Households by Elementary School Attendance Area, 1990-2005



¹ Here and below, growth rates of households are discussed.

Middle school attendance areas (MSAAs) saw a smaller variation in growth rates during the years 1990 to 2000: McCarty grew the fastest, at an average annual rate of 4.7 percent a year, followed by Clear Creek MSAA (4.1 percent) and West Orient MSAA (3.9 percent). Russell MSAA grew more slowly than the District as a whole at 3.2 percent. Damascus MSAA, which is identical to Deep Creek ESAA, experienced the slowest growth of 1.2 percent a year.

Fig. 2. Households by Middle School Attendance Area, 1990-2005



The years 2000 to 2005 saw a decline in average annual growth rates in all but four ESAAs. East Orient, Kelly Creek, North Gresham, and Powell Valley ESAAs accelerated their growth, reaching average annual rates of 2.9 percent, 7.3 percent, 6.8 percent, and 3.1 percent, respectively. Five ESAAs grew faster than the District as a whole during the 2000-2005 period: the above four areas and East Gresham ESAA (2.6 percent a year). Slower-growing ESAAs experienced average annual growth rates between 0.1 percent (Hall) and 1.9 percent (Hogan Cedars). Differences in growth rates by MSAA became less pronounced between the years 2000 to 2005: two MSAAs grew at average annual rates of 3.0 percent (Clear Creek, Russell), followed closely by West Orient (2.7 percent a year). Damascus and McCarty MSAAs saw average annual growth rates of 1.0 percent and 1.4 percent, respectively.

As the following section demonstrates, most of these growth trends are expected to continue during the forecast period (2006-2015).

II. Enrollment Projections by Elementary and Middle School Attendance Area of Residence

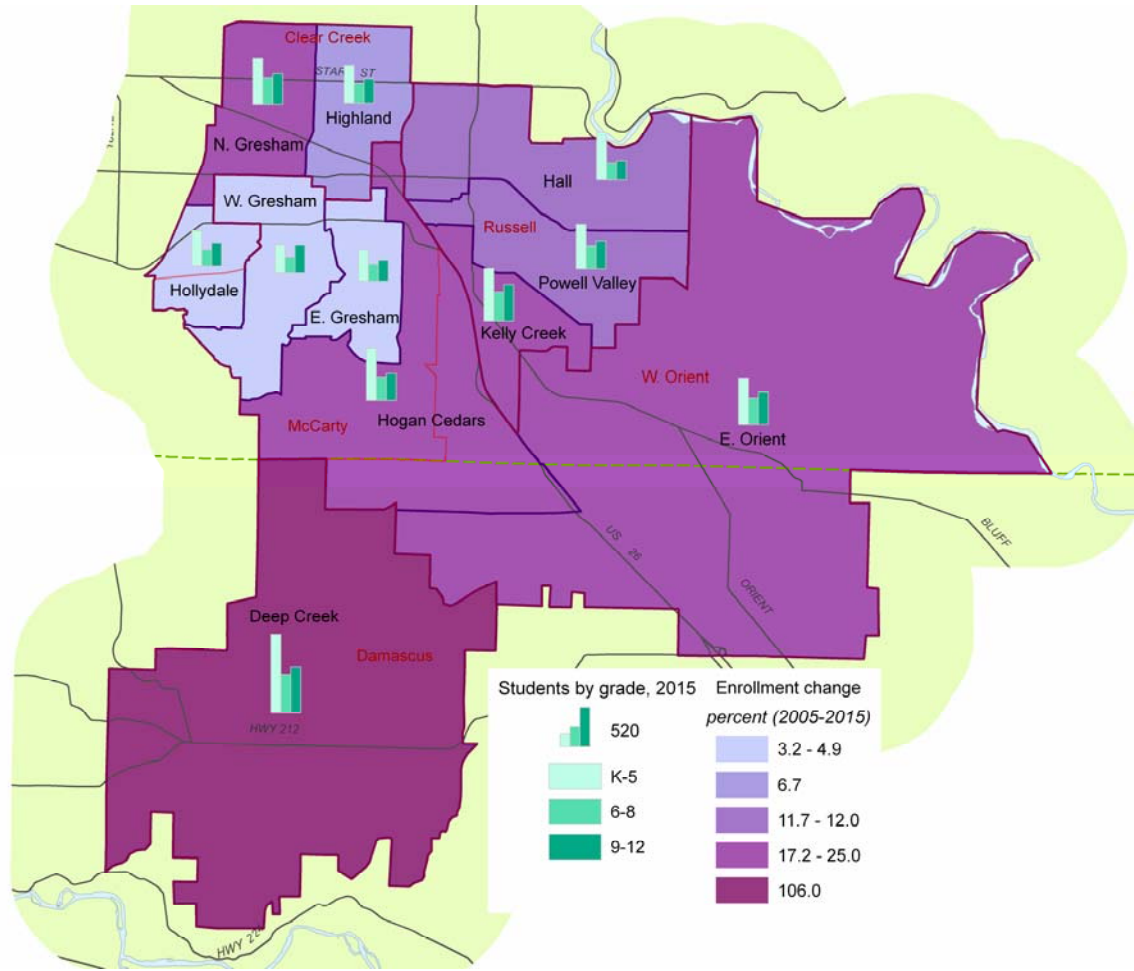
Gresham-Barlow School District (GBSD) consists of 11 elementary schools and 5 middle schools. Enrollment forecasts were prepared for each attendance area of residence and for each school. Developing enrollment forecasts by attendance area of residence allowed us to directly relate expected changes in housing and population of each area and their future K-12 student population. The projected numbers include regular and special education students residing in the school's attendance area, whether or not they attend their neighborhood school; they exclude the alternative high school students and students residing outside GBSD².

Only medium growth forecasts were developed for each school attendance area since enrollment growth-trends based on housing and population data for small areas have a high degree of uncertainty. Locations of future housing development depend a great deal on zoning and other administrative changes, as well as decisions made by individual developers, all of which are difficult to predict beyond the next few years.

Figure 1 and Tables 1 & 2 below summarize enrollment changes by attendance area of residence for the forecast period. Tables in the Appendix provide detailed information on future enrollment by grade and year for individual elementary and middle school attendance areas.

² Approximately 2 percent of the total number of K-12 students reside outside the District.

Fig. 3. Projected Enrollment by Grade Level and ESAA, 2006-2015



1a. Elementary School Attendance Areas (ESAs)

Elementary school attendance area projections were prepared separately for ESAs within Gresham High School Attendance Area (Fig.1) and Barlow High School Attendance Area (Fig. 2); this was done to better account for different housing and population trends in the two parts of the District³. All ESAs are expected to grow during the forecast period, although at different rates.

³ See an earlier study completed by PRC in November 2004 for enrollment projections by high school attendance area.

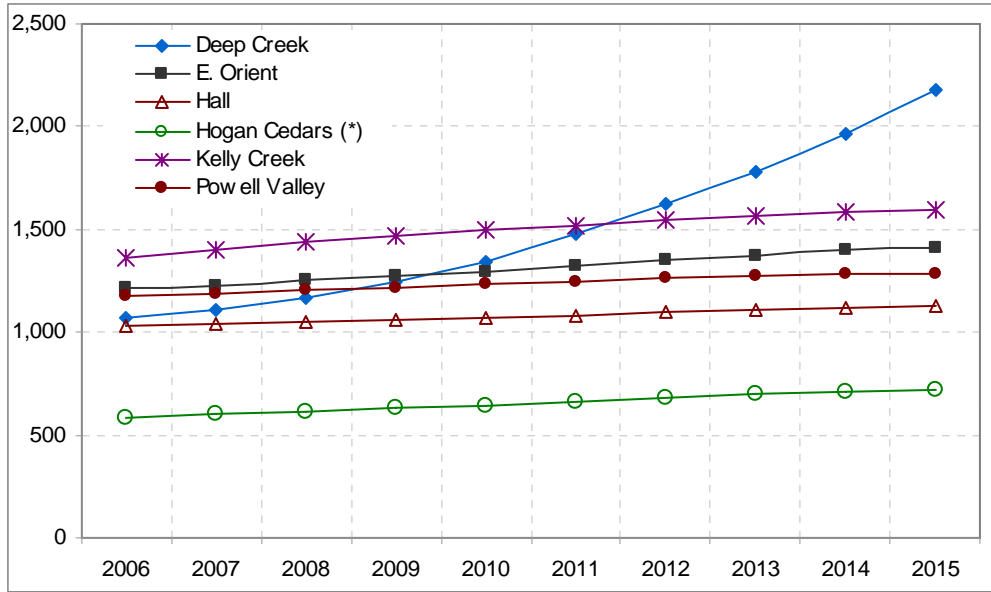
Table 1. Projected K-12 Enrollment Growth by ESAA of Residence, 2006-2015⁴

ESAA	2006	2007	2008	2009	2010	2011	2012	2013	2014	2015	2006-2016 change	
											total	% a year
<i>Barlow HSAA</i>												
Deep Creek	1,072	1,107	1,169	1,249	1,342	1,475	1,629	1,777	1,963	2,178	1,106	11.5
E. Orient	1,212	1,228	1,251	1,275	1,299	1,326	1,355	1,376	1,398	1,414	202	1.9
Hall	1,027	1,037	1,049	1,060	1,071	1,084	1,099	1,110	1,120	1,126	99	1.1
Hogan Cedars	586	601	616	631	646	662	681	696	711	724	138	2.6
Kelly Creek	1,362	1,400	1,440	1,471	1,494	1,522	1,549	1,565	1,582	1,594	232	1.9
Powell Valley	1,176	1,190	1,206	1,220	1,231	1,245	1,262	1,271	1,280	1,284	109	1.0
<i>Gresham HSAA</i>												
E. Gresham	890	894	896	906	910	916	918	925	928	932	42	0.5
Highland	1,059	1,066	1,071	1,084	1,091	1,099	1,103	1,112	1,118	1,124	65	0.7
Hogan Cedars	550	562	573	588	601	614	624	638	650	663	113	2.3
Hollydale	989	991	994	1,004	1,007	1,012	1,011	1,015	1,016	1,018	30	0.3
N. Gresham	1,249	1,277	1,295	1,322	1,338	1,357	1,370	1,390	1,406	1,423	174	1.6
W. Gresham	930	935	935	947	948	954	953	960	962	964	35	0.4
District	12,101	12,288	12,495	12,759	12,979	13,266	13,552	13,833	14,135	14,445	2,345	2.2

As the older, more established part of the District, the Gresham High School Attendance Area (HSAA) is expected to grow more slowly during the forecast period than the Barlow HSAA. Four ESAAs in the Gresham HSAA will grow, on average, by less than 1 percent a year between years 2006-2015: East Gresham (0.5 percent a year), Highland (0.7 percent a year), Hollydale (0.3 percent a year), and West Gresham (0.4 percent a year). These ESAAs will see an increase between 30 and 65 students in grades K-12 by the year 2015. Only North Gresham and the Gresham section of Hogan Cedars ESAAs are expected to exceed this rate and reach 1.6 and 2.3 percent a year, respectively. They are expected to have 110 (Hogan Cedars) and 170 (N. Gresham) additional students by the year 2015.

⁴ Hogan Cedars ESAA is split between Gresham and Barlow high school attendance areas, numbers are shown for its respective parts.

Fig. 5. Projected K-12 Enrollment Growth by ESAA, Barlow HSAA, 2006-2015



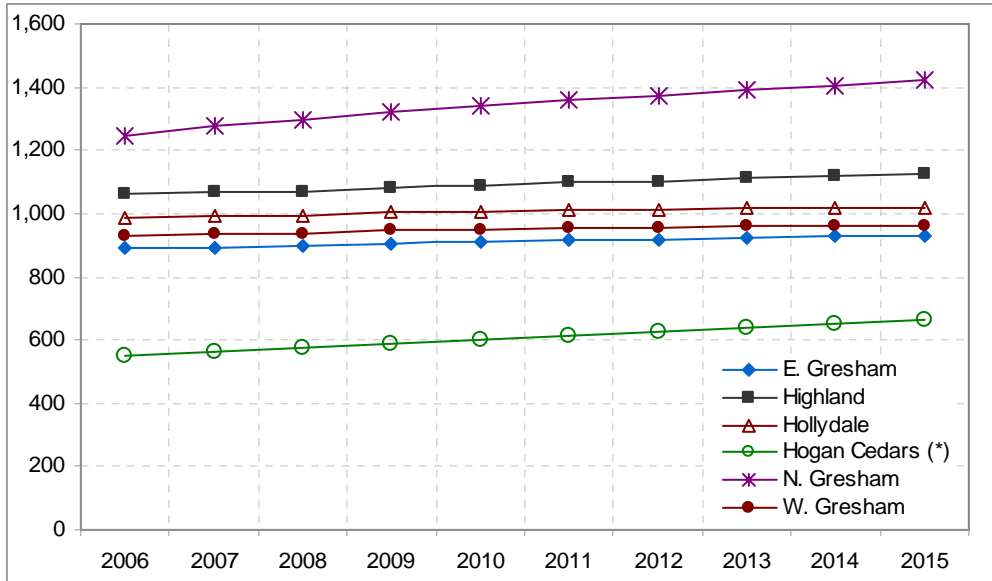
1b. Middle School Attendance Areas (MSAAs)

Among five MSAAs, Damascus MSAA is expected to grow the most, by approximately 1,100 students, or 11.5 percent a year. This is not surprising: its boundaries are identical to the Deep Creek ESAA discussed above. McCarty and Clear Creek MSAAs are expected to grow the least: during 2006-2015 they will add between 210 and 260 students in grades K-12 and grow, on average, by 0.8-1 percent a year (see Table 2 & Fig. 3). Russell MSAA will continue to be the largest, adding 440 students in grades K-12 during 2006-2015 at an average rate of 1.4 percent a year. West Orient MSAA will grow by 2.2 percent a year and add approximately 330 students.

Table 2. Projected K-12 Enrollment Growth by MSAA of Residence, 2006-2015

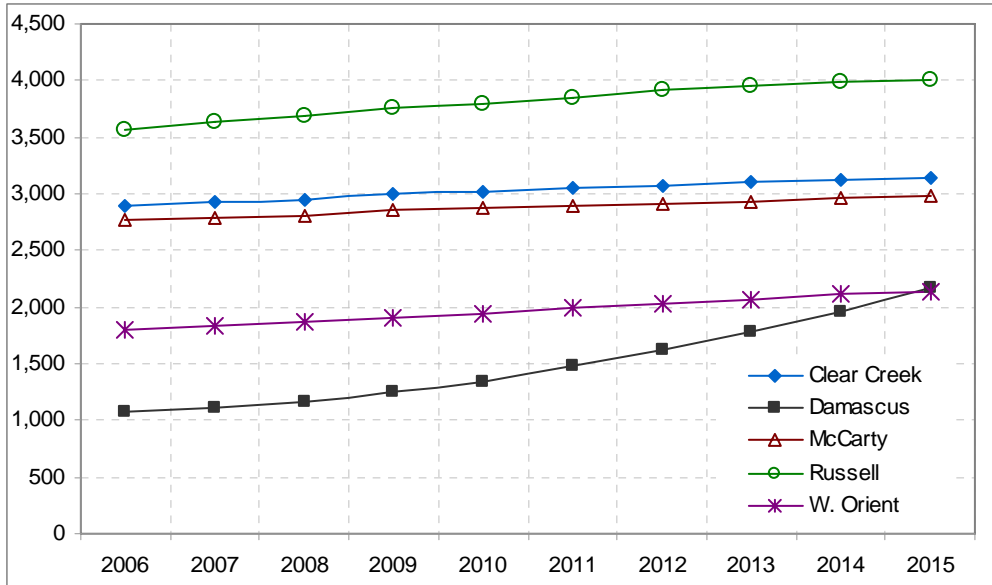
MSAA	2006	2007	2008	2009	2010	2011	2012	2013	2014	2015	2006-2016 change	
											total	% a year
Clear Creek	2,891	2,928	2,952	2,998	3,023	3,053	3,069	3,100	3,123	3,148	257	1.0
Damascus	1,072	1,107	1,169	1,249	1,342	1,475	1,629	1,777	1,963	2,178	1,106	11.5
McCarty	2,775	2,797	2,812	2,854	2,873	2,899	2,910	2,938	2,957	2,977	201	0.8
Russell	3,564	3,627	3,695	3,751	3,797	3,850	3,909	3,945	3,983	4,005	441	1.4
West Orient	1,798	1,829	1,867	1,907	1,944	1,988	2,036	2,072	2,109	2,138	340	2.1
District	12,101	12,288	12,495	12,759	12,979	13,266	13,552	13,833	14,135	14,445	2,345	2.2

Fig. 4. Projected K-12 Enrollment Growth by ESAA, Gresham HSAA, 2006-2015



In the Barlow HSAA, the Deep Creek ESAA is expected to grow the most: the number of K-12 students residing there is expected to increase, on average, by 11.5 percent a year between 2006 and 2015. It is by far the fastest growing ESAA in the entire District. The bulk of the growth in the ESAA is expected to take place during the years 2010-2015, when the development in the new City of Damascus will accelerate its pace. The growth will result in close to 1,100 additional K-12 students residing in the ESAA by the year 2015. Other ESAAs in this cluster will grow at lower average annual rates, which will vary from the lowest level of 1.0 percent in Powell Valley to the highest level of 2.6 percent in the Barlow section of Hogan Cedars ESAA. These ESAAs will add between 100 and 250 K-12 students by the year 2015.

Fig. 6. Projected K-12 Enrollment Growth by MSAA, 2006-2015



While most students residing in an attendance area attend their neighborhood school, some attend other schools. The resulting difference can be as high as one quarter of a grade's total: for example, in AY 2004, 25.9 percent of students in 2nd grade in East Gresham Elementary School came from outside its attendance area⁵. More typically, the share of students coming from other attendance areas of the District is lower: about 10 percent. The mismatch between the number of students projected to be in the classroom versus those projected to reside in an attendance area may be confusing. To address this issue, enrollment projections by school attending were prepared as well; the results are presented in the next section.

⁵ Students residing in other attendance areas represented approximately 21 percent of the total K-5 enrollment in East Gresham elementary school in AY 2004.

III. Enrollment Projections by Elementary and Middle School

The enrollment projections by school attending took into account historical grade progression trends in each school in addition to growth trends in population and housing in their attendance areas. The projected numbers include regular students by grade, whether or not they reside in the school's attendance area (special education students are not included into the projections by school; their projected totals by year are provided in the 2004 enrollment study).

Only medium growth projections were developed for each school since enrollment growth-trends based on small numbers, such as students by individual grade, have a high degree of uncertainty.

Tables 3 and 4 below summarize enrollment changes by school for the forecast period. Tables in the Appendix provide detailed information on future enrollment by grade and year for individual elementary and middle schools.

2a. Elementary Schools (ES)

Should the grade and attendance area configurations remain intact throughout the forecast period, Deep Creek ES will see the highest average growth rates, 12 percent a year, and will practically double the number of students in its K-4 grades⁶ by the school-year 2015 (Table 3), becoming the largest elementary school in GBSD. The growth will be concentrated in the second half of the forecast period: Deep Creek ES is projected to grow at 5.5 percent a year for school-years 2006 through 2010, accelerating to 12.5 percent a year between school-years 2010 and 2015.

⁶ Deep Creek ES is the only elementary school with just five grade levels, from K through 4. The rest of the schools are K-5.

Table 3. Projected Enrollment Growth by Elementary School, 2006-2015

<i>Elem. schools</i>	2006	2007	2008	2009	2010	2011	2012	2013	2014	2015	2006-2016 change	
											total	% a year
<i>Barlow HSAA</i>												
Deep Creek	345	360	381	409	442	484	532	583	644	716	372	12.0
E. Orient	501	512	524	536	549	558	569	580	590	599	98	2.2
Hall	534	543	551	559	568	573	580	587	592	597	63	1.3
Hogan Cedars	559	576	594	611	629	644	660	676	692	706	148	2.9
Kelly Creek	541	561	580	594	607	616	624	633	641	648	107	2.2
Powell Valley	518	529	538	546	554	559	565	571	576	580	62	1.3
<i>Gresham HSAA</i>												
E. Gresham	521	529	537	543	551	555	560	566	570	573	52	1.1
Highland	576	586	595	603	613	618	625	632	638	643	67	1.3
Hollydale	446	453	458	464	469	473	476	480	483	486	39	1.0
N. Gresham	550	568	583	596	610	619	629	640	650	659	109	2.2
W. Gresham	365	371	376	381	386	389	392	396	398	401	36	1.1
District	5,454	5,586	5,716	5,841	5,976	6,088	6,214	6,344	6,475	6,608	1,153	2.3

A different trend is expected for the remaining elementary schools: they will grow faster during the first half of the forecast period, and will see lower growth rates between school-years 2010 and 2015.

The second highest average annual growth rate of 2.9 percent will be attained by Hogan Cedars ES, which will add 150 students by the school-year 2015 to more than 700 students. It is followed by East Orient, Kelly Creek, and North Gresham elementary schools, which will experience growth of 2.2 percent a year and will add approximately 100 students by the school-year 2015. The rest of elementary schools are expected to grow more slowly, at 1.0-1.3 percent a year, and add 35 to 60 students between school-years 2006 and 2015.

Overall, projected enrollment changes in elementary schools follow closely the trends in the K-5 resident population of their attendance areas. Differences in projected numbers of elementary school students by school vs. by its attendance area have emerged in those instances when a large share of K-5 students attending a school were residing outside its attendance area during the school-years 2002-2004.

2b. Middle Schools (MS)

Should the grade and attendance area configurations remain intact throughout the forecast period, Damascus MS is expected to double its enrollment in grades 5-8 by the school-year 2015, growing on average at 11.5 percent a year (Table 4).

Table 4. Projected Enrollment Growth by Middle School, 2006-2015

<i>Middle schools</i>	2006	2007	2008	2009	2010	2011	2012	2013	2014	2015	2006-2016 change	
											total	% a year
Clear Creek	692	711	719	723	730	743	754	767	772	779	87	1.4
Damascus	359	375	394	419	450	495	545	597	657	730	371	11.5
McCarty	668	683	688	689	694	705	714	724	727	732	64	1.1
Russell	784	804	813	816	823	835	846	859	864	871	87	1.2
West Orient	405	420	429	436	445	458	470	483	491	499	94	2.6
District	2,908	2,992	3,043	3,083	3,142	3,236	3,330	3,431	3,511	3,611	703	2.7

West Orient MS will have the second highest growth rate, at 2.6 percent a year. Despite its higher growth rate it is projected to be the smallest middle school in the District, reaching approximately 500 students by the school-year 2015. The remaining three middle schools will grow, on average, by 1.1-1.4 percent a year, adding between 65 and 90 students during the forecast period. Russell MS, currently the largest school, will reach approximately 870 students remaining the largest. Clear Creek MS will remain the 2nd largest, at 780 students.

Since approximately 10 percent of middle-school students⁷ in GBSD attend a school other than the one in which attendance area they reside, projected numbers of middle-school students by school differ from projections by attendance area. However, the overall growth trends are very similar.

⁷ Damascus MS is the only middle school to house 5-graders; the rest of the schools are grades 6 through 8.

IV. Methods and Projection Assumptions

Methods

This study employs several methods commonly used in the forecasting profession, including the *Housing Units* method and the *Grade Progression Ratios* (GPR) method. The Housing Units method predicts future populations based on recent and likely future housing trends. It uses information on changes in housing stock for a given area, such as the construction of new houses, the demolition of existing ones, and likely future land use patterns; and ratios of persons and school-age children per household from special Census tabulations, on which estimates of current and future total and school-age populations are based. When student address data is available, ratios of students per household for different housing types can be developed and then applied to likely future households to estimate future student numbers.

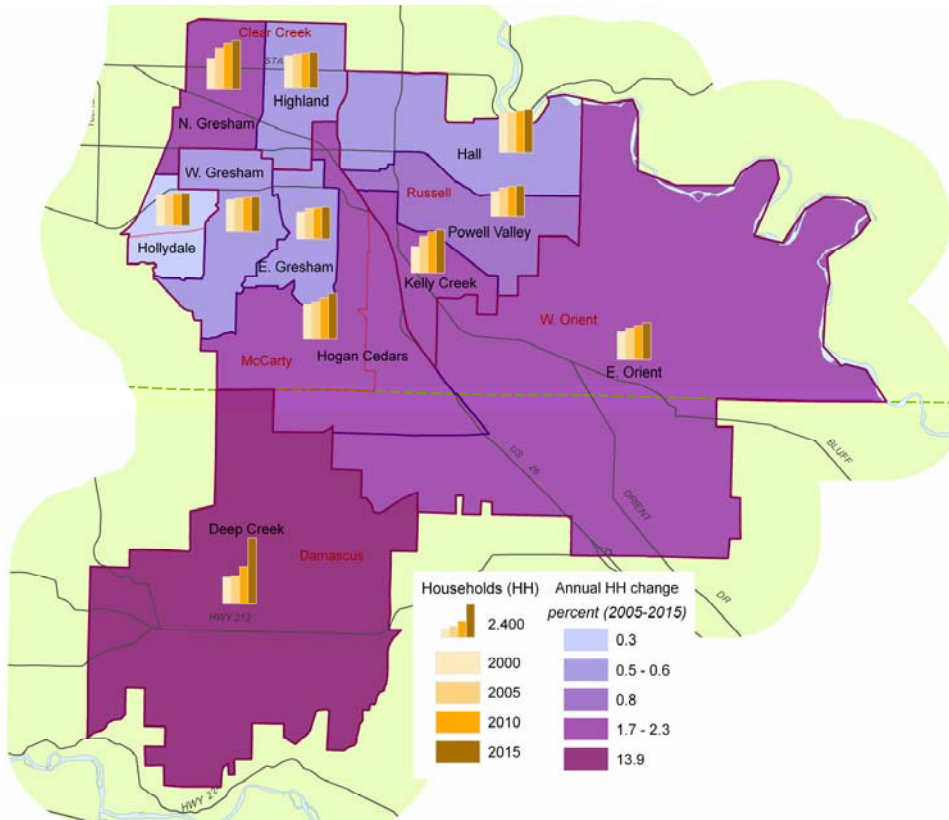
The Housing Units model developed for this study relied on several data sources, including 1990 and 2000 Census of Population and Housing, tax lot data for Multnomah and Clackamas counties from RLIS, Metro's household estimates for the 2001-2004 period and forecasts for the year 2015, and GBSD's K-12 student address data for school-years 2002-2004. Due to spatial mismatch between Census statistical areas, such as Census blocks or block-groups, and attendance areas (ESAAs, MSAAs), Census data were recalculated, or interpolated, from one system of areal units to the other using GIS. Spatial interpolation was also used to recalculate the data from Transportation Analysis Zones (TAZs) to school attendance areas.

The development of projections started with total number of households in 2000 by ESAAs⁸. Average annual household growth rates for 2000-2004 were then estimated primarily using the Metro's block group-level household estimates for the 2001-2004 period; rates were applied to the Census-based 2000 household counts to calculate total households for mid-year 2005. These rates, modified to incorporate expected future growth trends⁹, were also used to calculate household growth for the 2005-2015 period (see Fig. 4).

⁸ Same procedures apply to the MSAA-level forecasts.

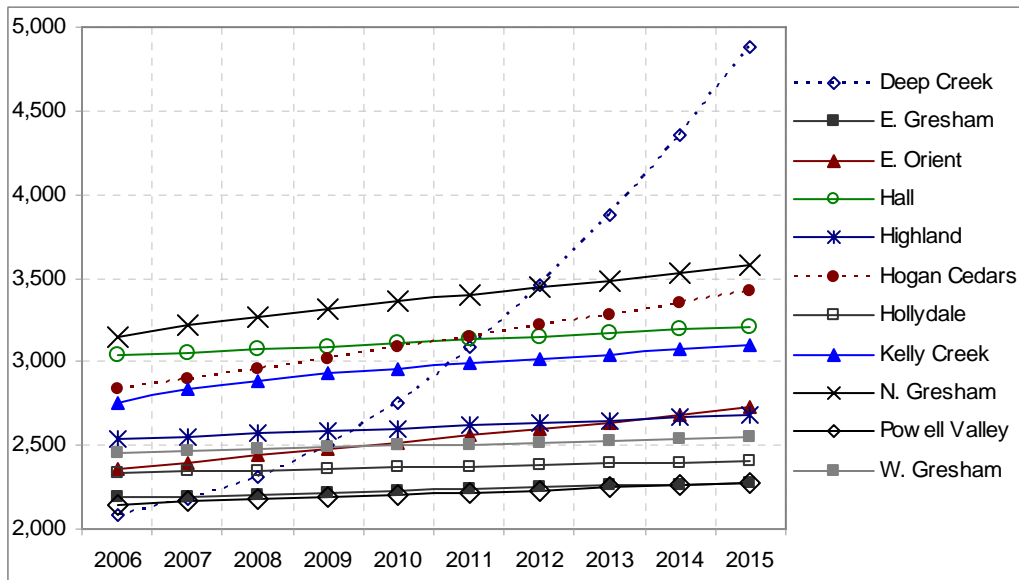
⁹ Future growth trends were developed from Metro's 2015 household forecasts by TAZ, and analyses of existing & future zoning, and concept plans for the City of Damascus and the Springwater Community.

Fig. 7. Recent Historical and Projected Household Growth by ESAA



Next, from an estimate of total households in 2002, 2003, and 2004 and resident enrollment in AY2002, 2003, and 2004, average ratios of the District’s students to District’s households, by ESAA, were produced. This step provides the link between households and students. Ratios of students per household were then trended to 2015 and attenuated based on the assumption that the ratios would increase slightly by the end of the forecast period in most ESAA’s due to an increasing share of Latino families, which tend to have more children than White non-Hispanic families. Using these ratios and projected households, future resident enrollment totals by year and ESAA were produced.

Fig. 8. Projected Household Growth by ESAA, 2006-2015



The Grade Progression Ratios method was used next to allocate projected enrollment totals by ESAA to individual grades. This method relies on historical enrollment trends for a given school or school district, in our case, on ESAA resident enrollment by grade for attendance-years 2002, 2003, and 2004. The model produces “grade-progression ratios”, or GPRs, for each grade cohort and year (for example, the ratio of 5th graders in AY2004 to 4th graders in AY2003).

Future GPRs are estimated using a moving average of several years of data (it is advisable to use a time series longer than 3 years; however data for earlier years were not available for this study). Multiplying total students in a given grade for AY2004 by the grade's GPR produces total enrollment for the next grade up in AY2005. Calculations are then repeated for every grade and year throughout the entire forecast period. One exception is students entering kindergarten, who are projected separately from expected future births. Results from these procedures produce preliminary projections by ESAA by grade and year.

These projections were then aggregated by HSAA and compared with future resident enrollment by grade, year, and HSAA developed in the 2004 study. The differences were analyzed and reconciled.

The Grade Progression Ratios method was also used to develop enrollment projections by school. In order to determine the GPRs for the future, weighted averages of ratios for each grade level from the past six years were calculated for each school. GPRs by grade level were then trended to 2015 using 6-year moving averages. Adjustments were made to the GPRs by grade level to account for predicted future changes in students residing in each of the attendance areas. These school-level projections by grade and year were then aggregated to the District level and compared with the GBSB projected enrollment by grade and year developed in the 2004 study. The differences were analyzed and reconciled.

Projection assumptions

The reliability of the projections by elementary/middle schools and attendance areas depends to a large degree on the same general factors as those described in the 2004 study. They include changes in national or local economic conditions, which could make the District and its parts more or less attractive to prospective in-migrants; changes in family composition leading to changes in the number of school-age children; and modifications of state, regional, or local land use laws and regulations affecting location and types of housing to be built by future developers. Moreover, a degree of uncertainty exists in relation to the timing and amount of residential development in the newly incorporated City of Damascus and proposed Springwater Community: while concept plans have been already adopted for both communities, actual planning and development may be several years away.

Additionally, specific methods and data sources utilized in the current study can affect the projections' reliability. These are discussed below.

This study links future student enrollment with projected household growth by ESAA (MSAA) using a student-per-household ratio. It utilized student addresses for AY 2002, AY2003, and

AY2004 to estimate average ratios by ESAA (MSAA). Adding student addresses for AY 2005 would have made the ratios more reliable as it would have increased the data base while taking into account the most recent trends.

Furthermore, the study found that, depending on the school and year, there were 32 to 90 percent more kindergarteners in the student records dataset than in the reported District totals, even after duplicate records were removed. A decision was made to replace suspicious counts of K-students by ESAA of residence with K-grade enrollment tallies by elementary school reported by the Oregon Department of Education. However, this assumes that all K-grade students residing in an ESAA attend their neighborhood school, while up to 15-20 percent of kindergarteners in a school may reside outside its ESAA.

Evidence from the 1990 and 2000 censuses shows that ratios of public school students per household can differ by housing type (single-family units, multi-family units, and mobile homes). Available tax lot data, however, provided no counts of multi-family units or mobile homes in the District, and only approximate counts of single-family units. This precluded calculating student-per-household ratios by housing type by attendance area. Instead, more general ratios were used in developing enrollment projections.

Since the tax lot data could not be used to derive counts of housing units by ESAA (MSAA) in 2005, the study relied on Metro's block group-level household estimates for the 2001-2004 period to estimate mid-year counts of households in 2005. GIS-based dasymetric areal interpolation was used to compensate for the fact that block groups do not fit neatly into ESAAs (MSAAs). While this is one of the most accurate interpolation methods, it nevertheless introduced some uncertainty into the resulting numbers (Sadahiro 1999, Simpson 2002). The same method was used to recalculate Metro's TAZ-level 2015 household projections to ESAAs (MSAAs), which also increased the forecasts' uncertainty.

Existing relationships between K-12 students residing in an attendance area and those attending its school were kept throughout the forecast period. However, these relationships can easily change should the District adopt a more strict versus more lenient attendance policy, change

configurations of attendance area boundaries, create a District-wide magnet school program(s), and so on.

The household projections were first developed for 2005, 2010, and 2015. Years in-between were estimated using corresponding 5-year average growth rates, which produces smooth trends. Real-world changes are likely to be more uneven and ‘spiky’.

Finally, projected student counts by grade for elementary school attendance areas (or schools) are smaller and therefore less reliable than projected student counts by grade for middle school attendance areas (or schools). The latter numbers are in turn less reliable than high-school-level or District-wide projections. Overall, the larger the areas and population groups for which projections are developed, the more reliable their results are (Tayman, Schafer, and Carter 1998).

Conclusions and Recommendations

This study examined recent historical and current trends in population, households, housing, and enrollment in elementary and middle school attendance areas of the Gresham-Barlow School District, as well as factors affecting their long-term changes. It considered growth expectations for population and enrollment reflected in the 2004 medium-growth projections for the District as a whole and its two high school attendances areas, and likely future changes in households and students residing therein at the local level to produce projections for elementary and middle school attendances areas, and for elementary and middle schools for attendance-years 2006 to 2015. Resident K-12 student population growth by the year 2015 is expected in all elementary and middle school attendances areas, albeit at different rates. Deep Creek ESAA is expected to grow the most, by approximately 11.5 percent a year, and will add 1,100 new K-12 students by the year 2015. Hogan Cedars ESAA is the second fastest growing area with average annual growth rates of 2.4 percent and 250 additional K-12 students residing there by the year 2015. The majority of ESAAs in Gresham HSAA are projected to grow by less than 1 percent a year, on average. This compares with Barlow HSAA, where most ESAAs are expected to increase by 1-1.5 percent a year by the school-year 2015. Not surprisingly, growth rates in MSAs closely reflect trends in their component ESAAs, with Damascus MSAA growing the most and McCarty MSAA growing the least. School-level projections reflect general patterns of attendance area-level projections. With an exception of Deep Creek, elementary schools in Barlow HSAA are expected to grow by 1.3-2.9 percent annually between attendance-years 2006 and 2015. This compares with average annual growth rates of 0.7-1.6 percent for elementary schools in Gresham HSAA.

Finally, it is worth noting that the original District-wide and high-school attendance area projections were developed in 2004, well before either the Damascus/Boring Concept Plan or the Springwater Community Plan were adopted. The 2004 projections have served as "control totals" for the attendance area/school-level projections developed by the current study. Should growth plans of these two new communities change significantly as they undergo detailed comprehensive planning, it would be prudent to revisit both the earlier projections and the more recent ones.

References

- “2004 Oregon Population Report” (2004). Population Research Center, Portland State University.
- "Crook County School District School Enrollment Forecast, 2006 to 2020". (2005). Population Research Center, Portland State University.
- "Gresham-Barlow School District 10J School Enrollment Forecast, 2004 to 2015" (2004). Population Research Center, Portland State University.
- "Medford School District 549 School Enrollment Forecast, 2005 to 2015" (2005). Population Research Center, Portland State University.
- "Preliminary July 1, 2005, Population Estimates for Oregon" (2005). Population Research Center, Portland State University.
- Sadahiro, Y. (1999). "Accuracy of Areal Interpolation: a Comparison of Alternative Methods." *Journal of Geographical Systems*, 1, pp. 323–346.
- Simpson, L. (2002). "Geography Conversion Tables: a Framework for Conversion of Data between Geographical Units." *International Journal of Population Geography*, 8, pp. 69–82.
- Tayman, J., E. Schafer, and L. Carter (1998). “The Role of Population Size in the Determination and Prediction of Population Forecast Errors: An Evaluation Using Confidence Intervals for Subcounty Areas”. *Population Research and Policy Review* 17: 1-20.

APPENDIX

**DETAILED RESULTS FOR
GRESHAM-BARLOW SCHOOL DISTRICT ENROLLMENT PROJECTIONS,
2006 TO 2015**

Contents:

Projections for ESAAs in Barlow High School Attendance Area.....A1 - A6
Projections for ESAAs in Gresham High School Attendance AreaA7 - A12
Projections for MSAAsA13 - A18
ESAA Growth Assumptions.....A19
MSAA Growth Assumptions.....A20
Projections by School.....A21 - A26
Rates of Change by School.....A27 - A32
Enrollment Growth by Grade & School (Charts).....A33 - A38
2002-2004 Average Enrollment by ESAA of Residence.....A39
2002-2004 Average Enrollment by MSAA of Residence.....A40
Births by Selected Ethnicity by ESAA, 1990-2003.....A41
Births by Selected Ethnicity by MSAA, 1990-2003.....A42

**Enrollment Forecasts by Elementary School Attendance Area (ESAA) of Residence,
Gresham-Barlow School District 10J, 2005-2015:
Medium Growth Scenario**

Barlow High School Attendance Area (HSAA)

Students residing outside of the District are not included

Deep Creek	2006	2007	2008	2009	2010	2011	2012	2013	2014	2015
KG	59	63	68	74	81	92	105	117	132	150
01	71	72	77	83	91	102	116	132	149	169
02	80	83	86	93	101	113	127	144	163	184
03	86	88	92	96	104	115	129	144	164	185
04	93	95	99	104	110	121	134	148	164	185
05	85	90	93	97	103	109	121	133	149	166
06	91	91	97	102	107	116	124	135	150	167
07	81	96	97	106	112	120	130	138	151	166
08	86	90	108	109	119	127	136	147	157	173
09	90	90	96	116	118	130	139	147	159	169
10	85	87	87	94	113	117	130	139	150	163
11	74	77	80	81	87	107	111	123	133	145
12	81	77	80	83	84	92	112	114	125	133
Other	10	10	11	11	12	13	15	17	18	21
Total	1,072	1,107	1,169	1,249	1,342	1,475	1,629	1,777	1,963	2,178

E. Orient	2006	2007	2008	2009	2010	2011	2012	2013	2014	2015
KG	71	73	74	75	76	78	80	82	83	84
01	81	82	82	83	84	86	89	91	93	95
02	87	90	91	92	93	95	97	100	101	103
03	88	92	94	94	95	96	98	101	103	104
04	95	98	101	104	105	106	107	108	109	110
05	102	104	106	109	112	112	113	115	116	117
06	104	102	103	106	109	112	113	114	115	115
07	93	105	102	105	108	112	115	115	115	115
08	95	99	111	107	109	112	115	119	119	119
09	101	98	102	115	111	112	115	118	121	120
10	91	92	89	92	104	99	101	104	108	111
11	90	91	91	88	91	102	99	101	105	109
12	97	87	86	86	83	85	95	90	90	92
Other	17	17	17	18	18	19	19	20	20	21
Total	1,212	1,228	1,251	1,275	1,299	1,326	1,355	1,376	1,398	1,414

Hall	2006	2007	2008	2009	2010	2011	2012	2013	2014	2015
KG	95	97	99	101	103	105	106	109	110	111
01	97	97	99	100	101	103	105	108	110	111
02	93	96	97	98	99	101	103	105	107	108
03	90	93	96	96	96	97	99	101	103	103
04	87	86	90	92	92	93	94	95	95	95
05	82	83	82	85	87	87	87	88	89	89
06	76	71	72	71	74	75	75	76	76	76
07	64	74	69	70	70	72	74	74	74	73
08	66	67	76	71	71	70	73	74	74	74
09	71	68	69	79	74	73	73	75	76	75
10	68	68	65	66	75	69	69	69	72	73
11	57	56	56	53	54	62	57	57	57	60
12	53	51	50	50	47	47	53	48	48	47
Other	28	28	28	29	29	30	30	31	31	32
Total	1,027	1,037	1,049	1,060	1,071	1,084	1,099	1,110	1,120	1,126

**Enrollment Forecasts by Elementary School Attendance Area (ESAA) of Residence,
Gresham-Barlow School District 10J, 2005-2015:
Medium Growth Scenario**

Barlow High School Attendance Area (HSAA)

Students residing outside of the District are not included

Hogan Cedars (*)	2006	2007	2008	2009	2010	2011	2012	2013	2014	2015
KG	51	52	53	55	56	57	59	60	61	62
01	56	57	58	59	60	61	63	65	67	68
02	57	59	60	60	61	63	65	67	68	69
03	53	58	59	60	60	61	63	65	66	67
04	49	50	53	55	56	56	57	58	59	60
05	45	47	48	52	53	53	54	55	56	57
06	46	44	46	47	50	52	53	53	54	54
07	41	45	44	46	47	50	52	52	52	53
08	38	40	44	42	44	44	47	49	49	50
09	37	38	40	44	42	43	44	47	48	48
10	35	35	35	36	40	38	39	41	44	45
11	30	30	30	30	31	34	33	34	35	38
12	32	30	30	30	29	31	33	31	32	33
Other	15	16	16	17	17	18	18	19	20	20
Total	586	601	616	631	646	662	681	696	711	724

Kelly Creek	2006	2007	2008	2009	2010	2011	2012	2013	2014	2015
KG	82	85	88	90	91	93	95	97	98	99
01	94	97	99	101	103	105	107	110	112	113
02	95	100	102	104	106	108	111	114	115	117
03	103	106	110	111	113	115	117	120	122	123
04	97	98	102	105	106	107	109	110	111	111
05	111	117	117	119	122	122	125	127	128	129
06	120	116	120	120	122	126	127	129	130	130
07	103	119	115	120	120	122	125	125	126	126
08	103	109	125	118	122	121	123	126	126	127
09	116	114	121	137	130	133	131	133	135	135
10	104	107	104	109	124	116	119	119	121	124
11	99	103	105	102	106	119	113	116	117	119
12	109	103	106	107	102	105	118	109	111	109
Other	25	26	27	27	28	29	29	30	31	31
Total	1,362	1,400	1,440	1,471	1,494	1,522	1,549	1,565	1,582	1,594

Powell Valley	2006	2007	2008	2009	2010	2011	2012	2013	2014	2015
KG	92	94	95	96	97	98	99	100	101	101
01	88	89	89	90	90	91	93	94	96	96
02	89	92	92	92	93	94	95	97	98	98
03	88	91	93	93	93	94	95	96	97	97
04	92	94	97	100	99	100	100	100	100	100
05	95	95	97	100	101	101	102	102	103	102
06	98	92	92	94	97	99	99	99	99	99
07	88	101	95	96	98	102	104	103	103	102
08	89	91	103	97	97	98	101	104	103	103
09	98	94	97	110	103	102	104	107	108	107
10	85	87	83	85	97	90	90	92	95	97
11	75	75	76	73	74	84	79	79	81	85
12	87	81	81	81	77	78	88	81	80	80
Other	14	14	14	14	15	15	15	15	16	16
Total	1,176	1,190	1,206	1,220	1,231	1,245	1,262	1,271	1,280	1,284

(*) Hogan Cedars ESAA is split between Gresham and Barlow HSAs; the data for the **Barlow part** is provided here.

**Enrollment Forecasts by Elementary School Attendance Area (ESAA) of Residence,
Gresham-Barlow School District 10J, 2005-2015:
Medium Growth Scenario**

Barlow High School Attendance Area (HSAA)

Students residing outside of the District are not included

Deep Creek	2006	2007	2008	2009	2010	2011	2012	2013	2014	2015
K-05	474	491	514	548	589	652	732	818	921	1,040
06-08	258	277	302	317	339	363	390	420	458	506
09-12	330	330	343	373	402	446	492	523	566	611
Other	10	10	11	11	12	13	15	17	18	21
Total K-12	1,072	1,107	1,169	1,249	1,342	1,475	1,629	1,777	1,963	2,178

Average annual change, percent

	2006-2010	2010-2015	2006-2015
K-5	6.1	15.3	13.3
6-8	7.8	9.9	10.7
9-12	5.5	10.4	9.5
Total K-12	6.3	12.4	11.5

E. Orient	2006	2007	2008	2009	2010	2011	2012	2013	2014	2015
K-05	524	538	548	558	565	573	584	596	605	613
06-08	292	306	316	318	326	336	343	347	348	349
09-12	379	368	369	382	389	399	409	413	424	432
Other	17	17	17	18	18	19	19	20	20	21
Total K-12	1,212	1,228	1,251	1,275	1,299	1,326	1,355	1,376	1,398	1,414

Average annual change, percent

	2006-2010	2010-2015	2006-2015
K-5	2.0	1.7	1.9
6-8	2.9	1.4	2.2
9-12	0.6	2.2	1.5
Total K-12	1.8	1.8	1.9

Hall	2006	2007	2008	2009	2010	2011	2012	2013	2014	2015
K-05	544	554	563	571	578	585	595	606	613	617
06-08	206	212	217	212	215	218	222	224	224	223
09-12	249	243	241	248	250	251	252	250	252	254
Other	28	28	28	29	29	30	30	31	31	32
Total K-12	1,027	1,037	1,049	1,060	1,071	1,084	1,099	1,110	1,120	1,126

Average annual change, percent

	2006-2010	2010-2015	2006-2015
K-5	1.6	1.4	1.5
6-8	1.1	0.8	0.9
9-12	0.1	0.4	0.2
Total K-12	1.1	1.0	1.1

**Enrollment Forecasts by Elementary School Attendance Area (ESAA) of Residence,
Gresham-Barlow School District 10J, 2005-2015:
Medium Growth Scenario**

Barlow High School Attendance Area (HSAA)

Students residing outside of the District are not included

Hogan Cedars (*)	2006	2007	2008	2009	2010	2011	2012	2013	2014	2015
K-05	311	323	332	340	345	352	360	369	377	383
06-08	125	129	134	135	141	147	152	155	156	157
09-12	135	133	134	140	142	146	150	153	160	164
Other	15	16	16	17	17	18	18	19	20	20
Total K-12	586	601	616	631	646	662	681	696	711	724

Average annual change, percent

	2006-2010	2010-2015	2006-2015
K-5	2.8	2.2	2.6
6-8	3.3	2.3	2.9
9-12	1.4	3.1	2.4
Total K-12	2.5	2.4	2.6

Kelly Creek	2006	2007	2008	2009	2010	2011	2012	2013	2014	2015
K-05	582	603	617	630	641	651	664	677	686	692
06-08	327	345	360	358	364	368	374	380	382	384
09-12	428	427	436	455	461	473	481	478	483	487
Other	25	26	27	27	28	29	29	30	31	31
Total K-12	1,362	1,400	1,440	1,471	1,494	1,522	1,549	1,565	1,582	1,594

Average annual change, percent

	2006-2010	2010-2015	2006-2015
K-5	2.5	1.6	2.1
6-8	2.9	1.1	1.9
9-12	2.0	1.1	1.5
Total K-12	2.4	1.3	1.9

Powell Valley	2006	2007	2008	2009	2010	2011	2012	2013	2014	2015
K-05	544	555	564	570	573	577	583	590	595	596
06-08	274	284	291	286	292	298	303	306	305	303
09-12	344	337	338	350	351	355	360	359	365	369
Other	14	14	14	14	15	15	15	15	16	16
Total K-12	1,176	1,190	1,206	1,220	1,231	1,245	1,262	1,271	1,280	1,284

Average annual change, percent

	2006-2010	2010-2015	2006-2015
K-5	1.4	0.8	1.1
6-8	1.6	0.8	1.2
9-12	0.6	1.0	0.8
Total K-12	1.2	0.9	1.0

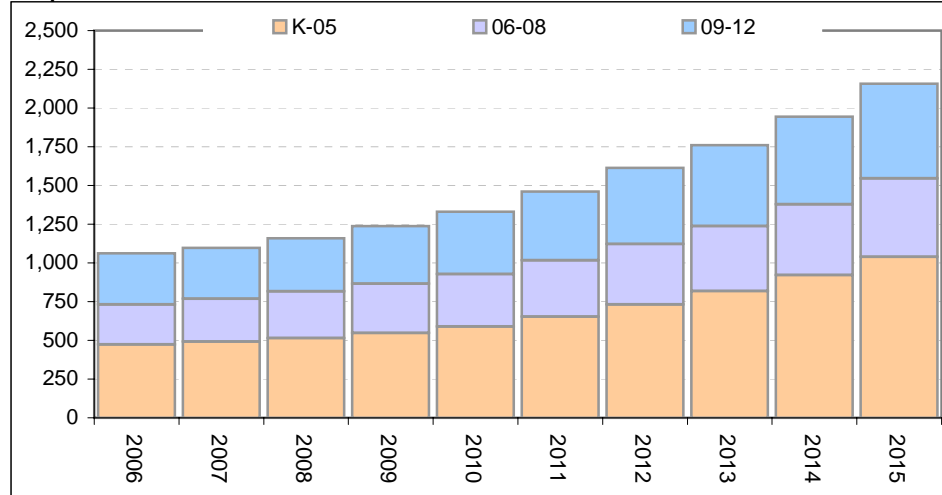
(*) Hogan Cedars ESAA is split between Gresham and Barlow HSAs; the data for the **Barlow part** is provided here.

Enrollment Forecasts by Elementary School Attendance Area (ESAA) of Residence, Gresham-Barlow School District 10J, 2005-2015: Medium Growth Scenario

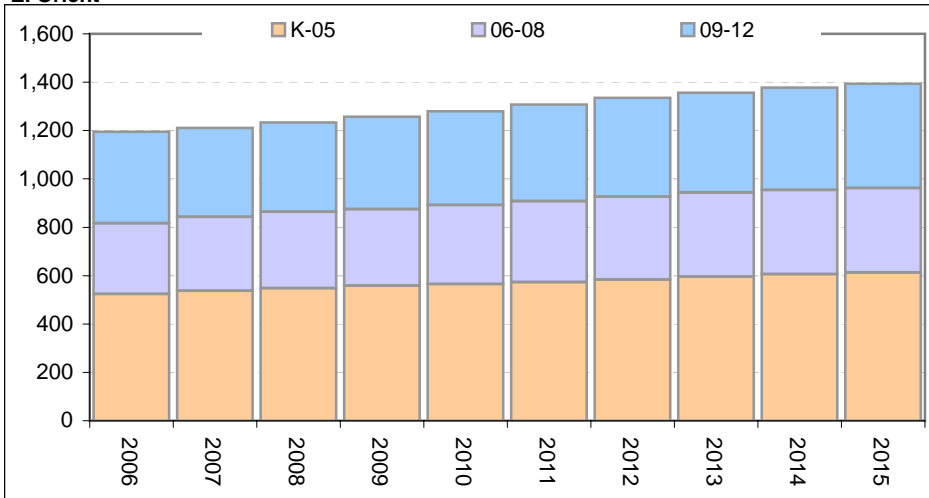
Barlow High School Attendance Area (HSA)

Students residing outside of the District are not included

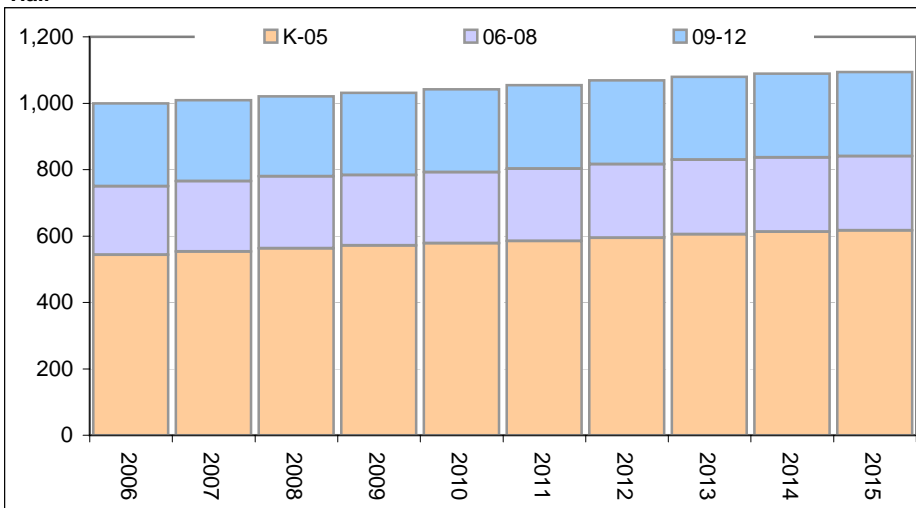
Deep Creek



E. Orient



Hall

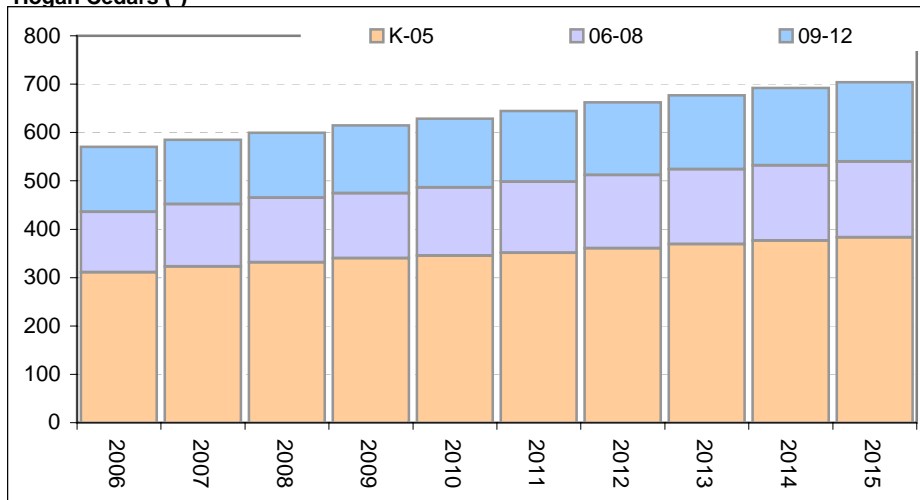


Enrollment Forecasts by Elementary School Attendance Area (ESAA) of Residence, Gresham-Barlow School District 10J, 2005-2015: Medium Growth Scenario

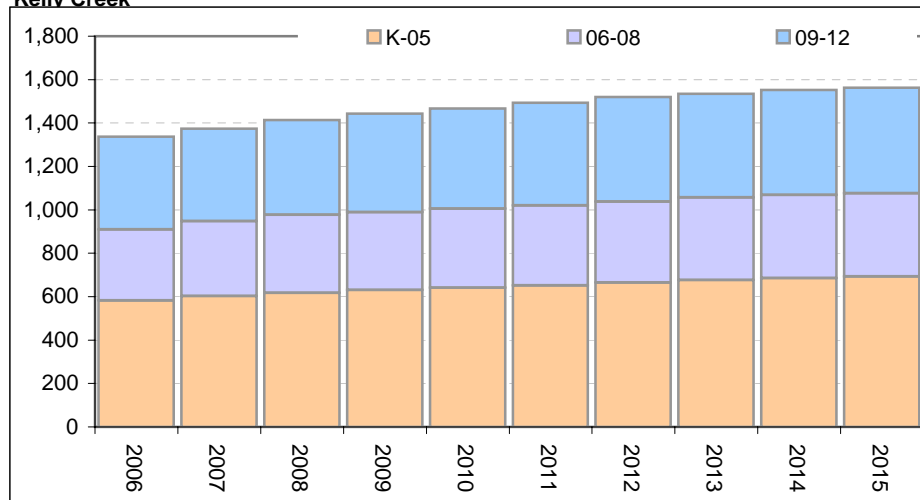
Barlow High School Attendance Area (HSA)

Students residing outside of the District are not included

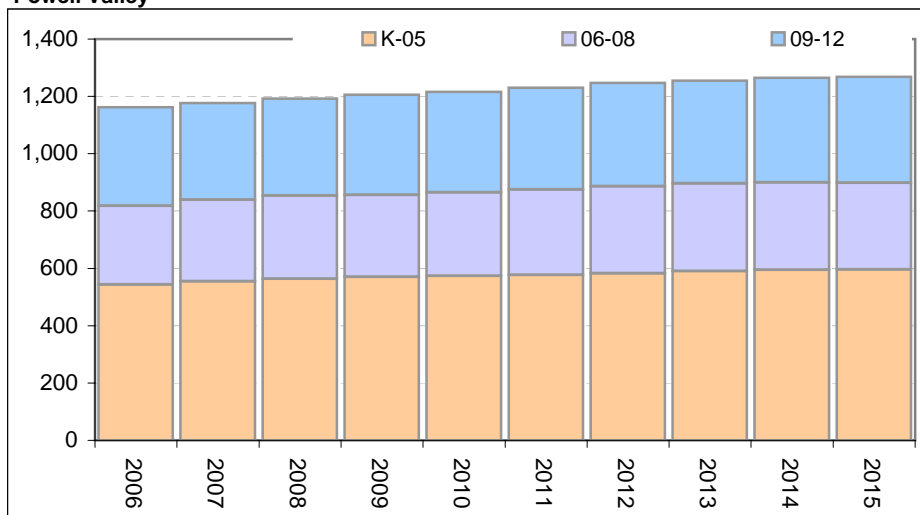
Hogan Cedars (*)



Kelly Creek



Powell Valley



(*) Hogan Cedars ESAA is split between Gresham and Barlow HSAs; the data for the **Barlow part** is provided here.

**Enrollment Forecasts by Elementary School Attendance Area (ESAA) of Residence,
Gresham-Barlow School District 10J, 2005-2015:
Medium Growth Scenario**

Gresham High School Attendance Area (HSA)

Students residing outside of the District are not included

E. Gresham	2006	2007	2008	2009	2010	2011	2012	2013	2014	2015
KG	72	73	75	76	78	77	76	76	75	75
01	69	69	70	72	73	74	73	72	72	71
02	65	66	66	68	70	70	70	69	68	68
03	69	68	69	69	70	71	71	71	70	69
04	65	67	66	67	66	66	67	67	68	67
05	66	67	69	68	68	67	68	69	70	72
06	63	65	66	68	66	66	66	68	69	71
07	71	66	69	71	72	71	72	72	73	74
08	65	69	64	66	68	70	69	70	70	71
09	73	68	72	67	70	72	75	74	75	74
10	65	71	66	68	62	64	67	70	69	70
11	71	62	69	65	69	64	66	68	69	67
12	63	69	61	69	66	70	65	67	67	69
Other	13	13	13	13	13	13	13	13	13	13
Total	890	894	896	906	910	916	918	925	928	932

Highland	2006	2007	2008	2009	2010	2011	2012	2013	2014	2015
KG	85	86	88	89	91	90	89	88	87	86
01	90	89	90	92	94	95	93	92	91	90
02	79	85	85	86	89	89	89	87	86	85
03	77	77	82	82	83	83	83	83	81	81
04	72	75	74	79	78	79	79	79	80	79
05	78	77	80	79	84	83	84	85	86	87
06	75	78	77	79	77	82	82	84	86	87
07	78	72	75	75	77	76	82	81	82	83
08	79	85	77	81	80	83	83	89	89	90
09	89	82	88	81	84	85	88	88	94	93
10	80	86	78	82	74	77	78	81	81	87
11	79	72	79	73	78	72	75	74	75	73
12	72	76	70	78	73	78	72	74	73	74
Other	26	26	27	27	27	27	27	28	28	28
Total	1,059	1,066	1,071	1,084	1,091	1,099	1,103	1,112	1,118	1,124

Hollydale	2006	2007	2008	2009	2010	2011	2012	2013	2014	2015
KG	73	75	77	80	83	83	83	83	83	83
01	71	71	73	76	79	81	80	80	80	79
02	63	66	67	70	73	74	75	74	74	73
03	71	70	74	74	76	78	79	79	79	78
04	69	69	69	71	71	73	74	75	76	76
05	74	72	73	71	74	74	76	78	79	81
06	68	69	67	67	65	68	68	70	72	74
07	81	73	75	73	73	72	76	76	77	78
08	71	74	68	68	66	67	66	69	69	71
09	88	83	87	80	81	79	80	79	82	81
10	83	91	85	87	78	79	77	79	78	80
11	86	78	88	84	88	80	81	77	76	73
12	76	82	75	86	83	86	78	78	75	73
Other	17	17	17	17	17	17	17	17	17	17
Total	989	991	994	1,004	1,007	1,012	1,011	1,015	1,016	1,018

**Enrollment Forecasts by Elementary School Attendance Area (ESAA) of Residence,
Gresham-Barlow School District 10J, 2005-2015:
Medium Growth Scenario**

Gresham High School Attendance Area (HSA)

Students residing outside of the District are not included

Hogan Cedars (*)	2006	2007	2008	2009	2010	2011	2012	2013	2014	2015
KG	42	43	44	45	46	46	45	45	45	45
01	54	53	54	55	57	58	57	57	57	57
02	43	47	47	48	50	51	51	50	50	50
03	46	45	50	50	51	51	51	52	51	51
04	42	46	45	49	49	50	50	51	51	51
05	37	38	42	41	45	44	45	46	47	48
06	41	41	43	47	45	50	50	51	53	54
07	43	39	40	41	46	45	49	49	50	51
08	37	40	36	37	38	42	42	47	47	48
09	43	42	46	42	42	45	50	49	54	54
10	35	40	39	41	37	38	40	45	44	49
11	38	33	39	38	41	38	39	40	44	42
12	34	38	33	40	39	43	39	40	41	45
Other	14	15	15	15	16	16	16	16	17	17
Total	550	562	573	588	601	614	624	638	650	663

N. Gresham	2006	2007	2008	2009	2010	2011	2012	2013	2014	2015
KG	86	89	92	94	97	96	96	96	96	95
01	92	93	96	99	102	103	102	102	102	101
02	84	92	94	97	101	102	102	101	100	100
03	90	90	97	98	101	102	103	103	102	102
04	92	96	96	103	103	104	106	107	108	108
05	95	96	100	98	105	105	107	110	112	114
06	96	103	102	105	102	109	111	114	117	120
07	102	93	99	99	102	101	108	109	111	114
08	99	109	99	105	104	107	107	115	116	119
09	104	98	108	98	104	104	108	107	115	116
10	98	108	99	106	95	100	101	105	105	112
11	100	90	101	95	104	95	99	98	100	96
12	81	89	82	93	88	96	87	90	89	90
Other	29	30	31	31	32	32	32	33	33	34
Total	1,249	1,277	1,295	1,322	1,338	1,357	1,370	1,390	1,406	1,423

W. Gresham	2006	2007	2008	2009	2010	2011	2012	2013	2014	2015
KG	53	55	57	58	60	60	60	60	60	60
01	56	57	58	60	62	63	63	62	63	62
02	49	52	53	55	57	58	58	57	57	57
03	53	52	55	55	57	58	58	59	58	58
04	59	59	58	61	61	62	63	63	64	64
05	61	59	60	58	61	61	62	63	64	66
06	58	62	60	59	57	60	60	62	64	66
07	67	62	66	64	64	63	66	66	68	69
08	72	75	69	73	71	71	70	74	74	75
09	94	88	92	85	91	88	90	87	92	91
10	93	102	94	96	87	92	90	91	89	94
11	102	92	103	97	101	94	98	94	93	89
12	96	105	96	109	104	108	100	104	99	98
Other	15	15	15	15	15	16	16	16	16	16
Total	930	935	935	947	948	954	953	960	962	964

(*) Hogan Cedars ESAA is split between Gresham and Barlow HSAs; the data for the **Gresham part** is provided here.

**Enrollment Forecasts by Elementary School Attendance Area (ESAA) of Residence,
Gresham-Barlow School District 10J, 2005-2015:
Medium Growth Scenario**

Gresham High School Attendance Area (HSAA)

Students residing outside of the District are not included

E. Gresham	2006	2007	2008	2009	2010	2011	2012	2013	2014	2015
K-05	406	411	416	419	425	426	424	423	422	422
06-08	199	200	199	205	206	207	208	210	212	216
09-12	272	270	268	270	267	271	273	278	281	280
Other	13	13	13	13	13	13	13	13	13	13
Total K-12	890	894	896	906	910	916	918	925	928	932

Average annual change, percent

	2006-2010	2010-2015	<i>2006-2015</i>
K-5	1.1	-0.1	0.4
6-8	0.9	1.0	1.0
9-12	-0.5	1.0	0.3
Total K-12	0.6	0.5	0.5

Highland	2006	2007	2008	2009	2010	2011	2012	2013	2014	2015
K-05	480	489	499	508	519	519	516	513	511	509
06-08	232	235	230	235	234	241	247	254	256	260
09-12	320	316	315	314	310	312	312	317	323	327
Other	26	26	27	27	27	27	27	28	28	28
Total K-12	1,059	1,066	1,071	1,084	1,091	1,099	1,103	1,112	1,118	1,124

Average annual change, percent

	2006-2010	2010-2015	<i>2006-2015</i>
K-5	2.0	-0.4	0.7
6-8	0.2	2.2	1.3
9-12	-0.8	1.1	0.2
Total K-12	0.7	0.6	0.7

Hollydale	2006	2007	2008	2009	2010	2011	2012	2013	2014	2015
K-05	420	424	433	443	456	463	467	469	470	470
06-08	220	217	210	208	205	207	210	215	219	223
09-12	332	334	335	336	329	325	317	314	311	308
Other	17	17	17	17	17	17	17	17	17	17
Total K-12	989	991	994	1,004	1,007	1,012	1,011	1,015	1,016	1,018

Average annual change, percent

	2006-2010	2010-2015	<i>2006-2015</i>
K-5	2.2	0.6	1.3
6-8	-1.7	1.8	0.2
9-12	-0.2	-1.3	-0.8
Total K-12	0.5	0.2	0.3

Enrollment Forecasts by Elementary School Attendance Area (ESAA) of Residence, Gresham-Barlow School District 10J, 2005-2015: Medium Growth Scenario

Gresham High School Attendance Area (HSAA)

Students residing outside of the District are not included

Hogan Cedars (*)	2006	2007	2008	2009	2010	2011	2012	2013	2014	2015
K-05	264	273	282	288	296	299	300	300	301	302
06-08	121	120	119	125	129	137	141	147	150	153
09-12	151	154	157	160	160	163	168	174	183	190
Other	14	15	15	15	16	16	16	16	17	17
Total K-12	550	562	573	588	601	614	624	638	650	663

Average annual change, percent

	2006-2010	2010-2015	2006-2015
K-5	3.1	0.4	1.6
6-8	1.7	3.8	3.0
9-12	1.4	3.8	2.8
Total K-12	2.3	2.1	2.3

N. Gresham	2006	2007	2008	2009	2010	2011	2012	2013	2014	2015
K-05	539	556	574	590	608	614	617	618	620	621
06-08	297	305	301	308	308	317	326	338	345	353
09-12	383	386	390	393	391	394	395	401	408	415
Other	29	30	31	31	32	32	32	33	33	34
Total K-12	1,249	1,277	1,295	1,322	1,338	1,357	1,370	1,390	1,406	1,423

Average annual change, percent

	2006-2010	2010-2015	2006-2015
K-5	3.2	0.4	1.7
6-8	0.9	2.9	2.1
9-12	0.5	1.2	0.9
Total K-12	1.8	1.3	1.6

W. Gresham	2006	2007	2008	2009	2010	2011	2012	2013	2014	2015
K-05	332	334	340	347	357	362	364	365	367	367
06-08	198	199	195	197	192	194	196	202	205	210
09-12	385	387	385	388	383	382	377	377	374	371
Other	15	15	15	15	15	16	16	16	16	16
Total K-12	930	935	935	947	948	954	953	960	962	964

Average annual change, percent

	2006-2010	2010-2015	2006-2015
K-5	1.9	0.6	1.2
6-8	-0.7	1.8	0.7
9-12	-0.1	-0.6	-0.4
Total K-12	0.5	0.3	0.4

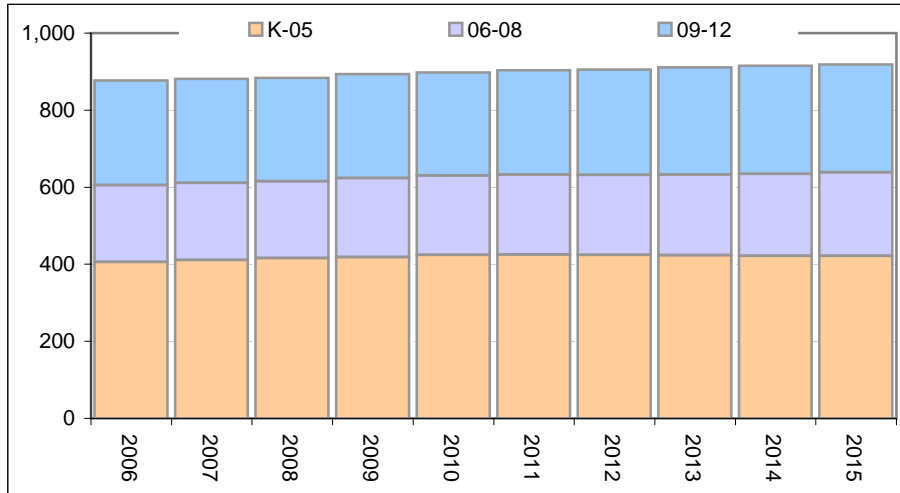
(*) Hogan Cedars ESAA is split between Gresham and Barlow HSAs; the data for the **Gresham part** is provided here.

Enrollment Forecasts by Elementary School Attendance Area (ESAA) of Residence, Gresham-Barlow School District 10J, 2005-2015: Medium Growth Scenario

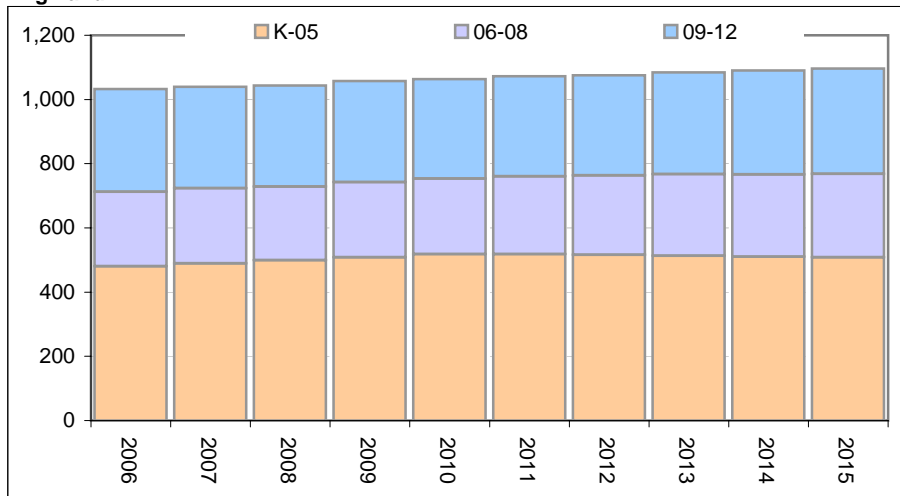
Gresham High School Attendance Area (HSA)

Students residing outside of the District are not included

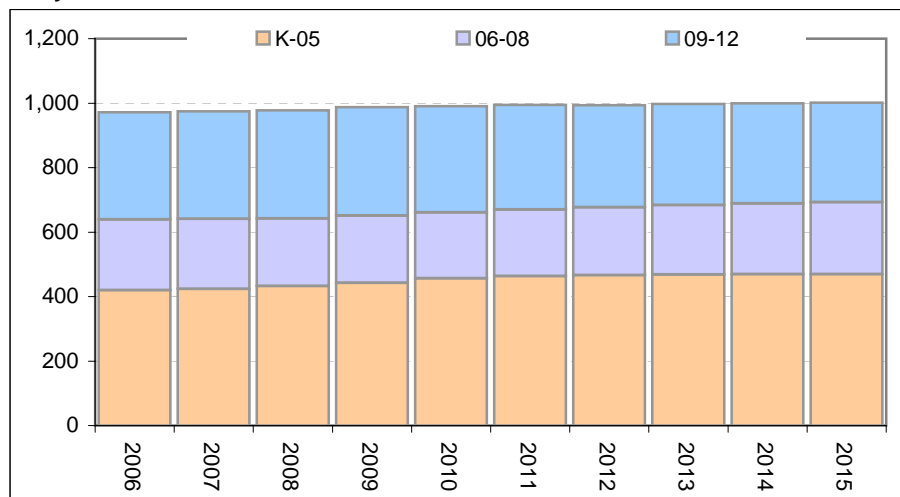
E. Gresham



Highland



Hollydale

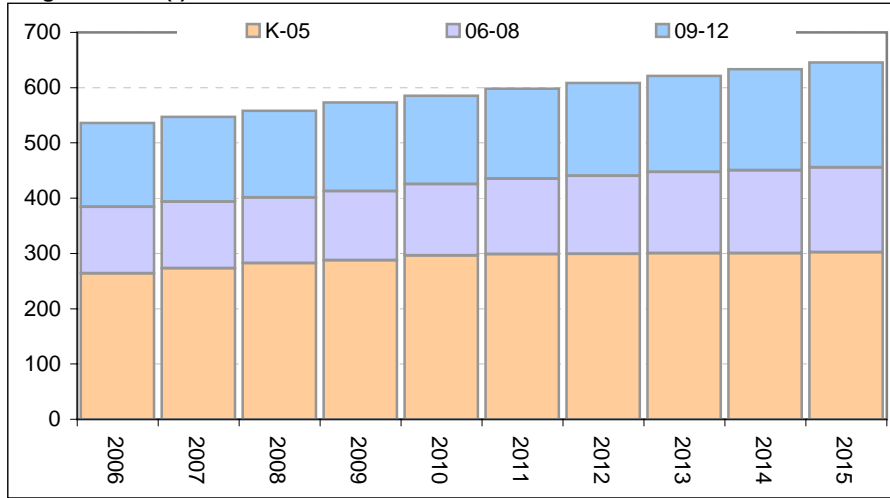


Enrollment Forecasts by Elementary School Attendance Area (ESAA) of Residence, Gresham-Barlow School District 10J, 2005-2015: Medium Growth Scenario

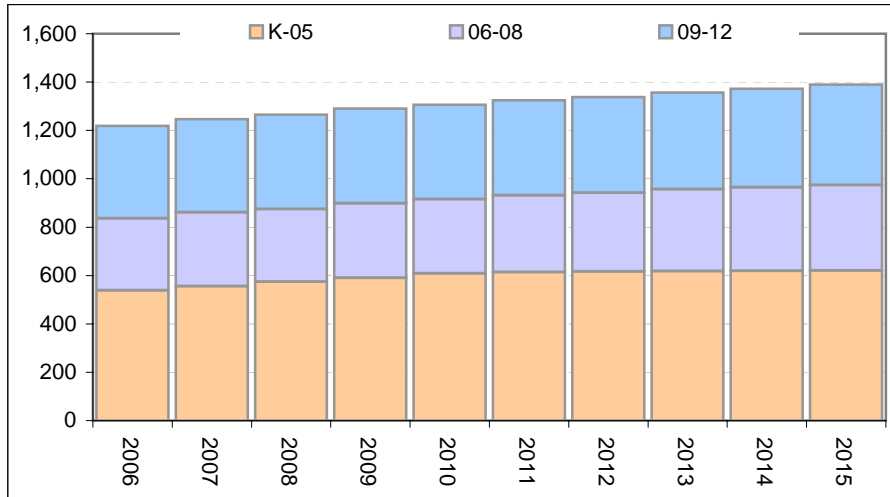
Gresham High School Attendance Area (HSA)

Students residing outside of the District are not included

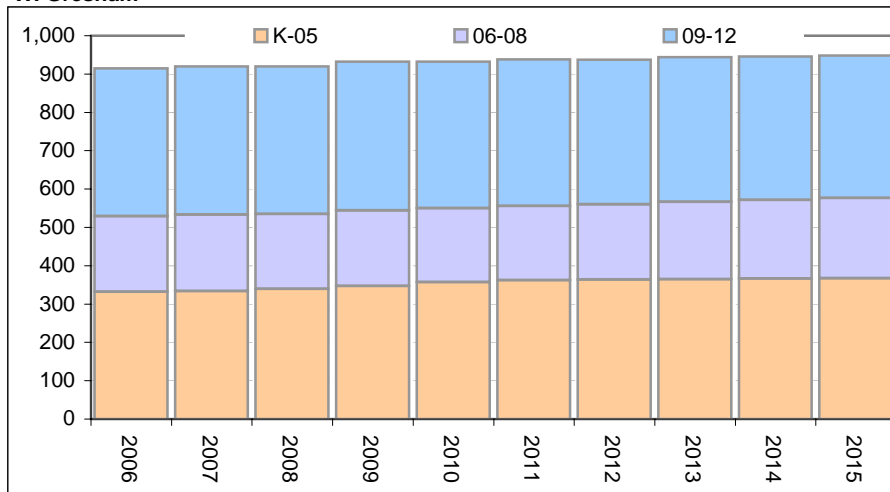
Hogan Cedars (*)



N. Gresham



W. Gresham



(*) Hogan Cedars ESAA is split between Gresham and Barlow HSAs; the data for the **Gresham part** is provided here.

**Enrollment Forecasts by Middle School Attendance Area (MSAA) of Residence,
Gresham-Barlow School District 10J, 2005-2015:
Medium Growth Scenario**

Middle School Attendance Areas (MSAAs)

Students residing outside of the District are not included

Clear Creek	2006	2007	2008	2009	2010	2011	2012	2013	2014	2015
KG	214	220	225	231	236	235	234	233	232	231
01	223	224	230	236	243	246	242	240	239	238
02	200	216	219	225	232	235	235	231	229	228
03	208	208	223	224	229	232	232	233	230	230
04	205	212	210	224	224	226	228	230	232	231
05	217	216	222	219	233	232	236	240	244	249
06	211	221	219	223	218	232	233	239	245	252
07	228	208	218	217	222	220	235	235	239	243
08	220	239	217	226	223	229	229	245	246	250
09	245	229	248	227	236	235	244	242	257	257
10	227	248	227	240	215	223	224	233	232	247
11	231	208	232	218	234	214	221	217	220	213
12	197	214	196	221	210	225	205	210	205	208
Other	65	66	67	68	69	69	70	70	71	72
Total	2,891	2,928	2,952	2,998	3,023	3,053	3,069	3,100	3,123	3,148

Damascus	2006	2007	2008	2009	2010	2011	2012	2013	2014	2015
KG	59	63	68	74	81	92	105	117	132	150
01	71	72	77	83	91	102	116	132	149	169
02	80	83	86	93	101	113	127	144	163	184
03	86	88	92	96	104	115	129	144	164	185
04	93	95	99	104	110	121	134	148	164	185
05	85	90	93	97	103	109	121	133	149	166
06	91	91	97	102	107	116	124	135	150	167
07	81	96	97	106	112	120	130	138	151	166
08	86	90	108	109	119	127	136	147	157	173
09	90	90	96	116	118	130	139	147	159	169
10	85	87	87	94	113	117	130	139	150	163
11	74	77	80	81	87	107	111	123	133	145
12	81	77	80	83	84	92	112	114	125	133
Other	10	10	11	11	12	13	15	17	18	21
Total	1,072	1,107	1,169	1,249	1,342	1,475	1,629	1,777	1,963	2,178

McCarty	2006	2007	2008	2009	2010	2011	2012	2013	2014	2015
KG	198	202	207	212	217	217	216	215	215	214
01	209	208	213	219	225	228	225	224	223	223
02	183	193	194	199	206	209	209	206	205	204
03	197	194	204	204	209	212	212	213	211	211
04	195	202	198	206	205	208	210	212	215	214
05	194	194	200	196	204	203	206	210	214	218
06	189	197	196	201	195	204	204	210	216	221
07	214	196	206	206	212	208	219	218	222	226
08	203	215	197	205	204	210	208	219	219	223
09	246	232	246	227	236	238	248	243	254	253
10	227	251	233	240	218	226	228	239	235	246
11	247	219	247	235	247	229	236	233	237	227
12	225	245	222	253	244	256	236	243	238	242
Other	49	49	50	50	51	51	52	52	53	53
Total	2,775	2,797	2,812	2,854	2,873	2,899	2,910	2,938	2,957	2,977

**Enrollment Forecasts by Middle School Attendance Area (MSAA) of Residence,
Gresham-Barlow School District 10J, 2005-2015:
Medium Growth Scenario**

Middle School Attendance Areas (MSAAs)

Students residing outside of the District are not included

Russell	2006	2007	2008	2009	2010	2011	2012	2013	2014	2015
KG	269	276	282	286	290	296	301	306	309	311
01	278	283	287	291	294	298	305	312	317	321
02	278	288	291	295	299	303	309	316	320	323
03	281	291	299	300	302	306	311	317	322	324
04	276	278	289	296	297	300	302	305	306	306
05	288	295	296	304	310	310	313	317	319	321
06	294	279	284	285	293	300	301	304	305	305
07	255	294	279	285	288	296	303	302	303	301
08	258	267	304	286	290	289	296	304	303	304
09	285	277	287	327	306	308	308	314	319	317
10	257	262	253	261	295	275	278	281	288	295
11	230	234	238	228	234	265	249	253	256	263
12	249	235	236	237	226	231	258	239	238	236
Other	66	68	69	70	72	73	75	76	77	79
Total	3,564	3,627	3,695	3,751	3,797	3,850	3,909	3,945	3,983	4,005

W. Orient	2006	2007	2008	2009	2010	2011	2012	2013	2014	2015
KG	122	125	127	130	132	135	138	142	144	146
01	137	138	140	142	144	147	152	156	160	162
02	144	149	150	152	154	157	162	166	169	172
03	142	149	154	154	155	157	161	165	169	171
04	144	147	155	160	160	162	164	166	168	169
05	147	151	154	161	165	165	167	170	172	174
06	150	146	149	153	159	165	165	167	168	170
07	134	150	146	150	155	162	167	167	168	168
08	133	139	155	149	153	156	162	168	168	169
09	138	136	142	159	153	155	159	165	169	168
10	126	126	123	129	143	137	140	145	152	156
11	121	121	121	118	123	137	132	135	140	147
12	129	117	117	116	112	116	128	121	122	124
Other	32	33	34	35	35	37	38	39	40	41
Total	1,798	1,829	1,867	1,907	1,944	1,988	2,036	2,072	2,109	2,138

**Enrollment Forecasts by Middle School Attendance Area (MSAA) of Residence,
Gresham-Barlow School District 10J, 2005-2015:
Medium Growth Scenario**

Middle School Attendance Areas (MSAAs)

Students residing outside of the District are not included

Clear Creek	2006	2007	2008	2009	2010	2011	2012	2013	2014	2015
K-05	1,267	1,295	1,329	1,359	1,396	1,406	1,408	1,408	1,407	1,407
06-08	659	667	654	666	663	681	697	720	731	745
09-12	900	899	903	905	895	897	894	902	915	924
Other	65	66	67	68	69	69	70	70	71	72
Total K-12	2,891	2,928	2,952	2,998	3,023	3,053	3,069	3,100	3,123	3,148

Average annual change, percent

	2006-2010	2010-2015	2006-2015
K-5	2.5	0.2	1.2
6-8	0.2	2.5	1.5
9-12	-0.1	0.7	0.3
Total K-12	1.1	0.8	1.0

Damascus	2006	2007	2008	2009	2010	2011	2012	2013	2014	2015
K-05	474	491	514	548	589	652	732	818	921	1,040
06-08	258	277	302	317	339	363	390	420	458	506
09-12	330	330	343	373	402	446	492	523	566	611
Other	10	10	11	11	12	13	15	17	18	21
Total K-12	1,072	1,107	1,169	1,249	1,342	1,475	1,629	1,777	1,963	2,178

Average annual change, percent

	2006-2010	2010-2015	2006-2015
K-5	6.1	15.3	13.3
6-8	7.8	9.9	10.7
9-12	5.5	10.4	9.5
Total K-12	6.3	12.4	11.5

McCarty	2006	2007	2008	2009	2010	2011	2012	2013	2014	2015
K-05	1,175	1,192	1,216	1,236	1,266	1,276	1,279	1,281	1,282	1,284
06-08	607	608	599	612	611	623	631	647	657	671
09-12	945	947	947	956	945	949	948	958	965	968
Other	49	49	50	50	51	51	52	52	53	53
Total K-12	2,775	2,797	2,812	2,854	2,873	2,899	2,910	2,938	2,957	2,977

Average annual change, percent

	2006-2010	2010-2015	2006-2015
K-5	1.9	0.3	1.0
6-8	0.2	2.0	1.2
9-12	0.0	0.5	0.3
Total K-12	0.9	0.7	0.8

**Enrollment Forecasts by Middle School Attendance Area (MSAA) of Residence,
Gresham-Barlow School District 10J, 2005-2015:
Medium Growth Scenario**

Middle School Attendance Areas (MSAAs)

Students residing outside of the District are not included

Russell	2006	2007	2008	2009	2010	2011	2012	2013	2014	2015
K-05	1,670	1,712	1,744	1,772	1,792	1,813	1,842	1,873	1,894	1,906
06-08	807	841	868	856	871	885	899	910	911	910
09-12	1,021	1,007	1,014	1,053	1,062	1,079	1,093	1,086	1,101	1,110
Other	66	68	69	70	72	73	75	76	77	79
Total K-12	3,564	3,627	3,695	3,751	3,797	3,850	3,909	3,945	3,983	4,005

Average annual change, percent

	2006-2010	2010-2015	2006-2015
K-5	1.8	1.3	1.6
6-8	2.0	0.9	1.4
9-12	1.0	0.9	1.0
Total K-12	1.6	1.1	1.4

W. Orient	2006	2007	2008	2009	2010	2011	2012	2013	2014	2015
K-05	835	860	880	898	911	924	944	965	982	996
06-08	417	435	450	452	467	482	495	502	504	506
09-12	514	500	504	522	531	545	559	567	583	596
Other	32	33	34	35	35	37	38	39	40	41
Total K-12	1,798	1,829	1,867	1,907	1,944	1,988	2,036	2,072	2,109	2,138

Average annual change, percent

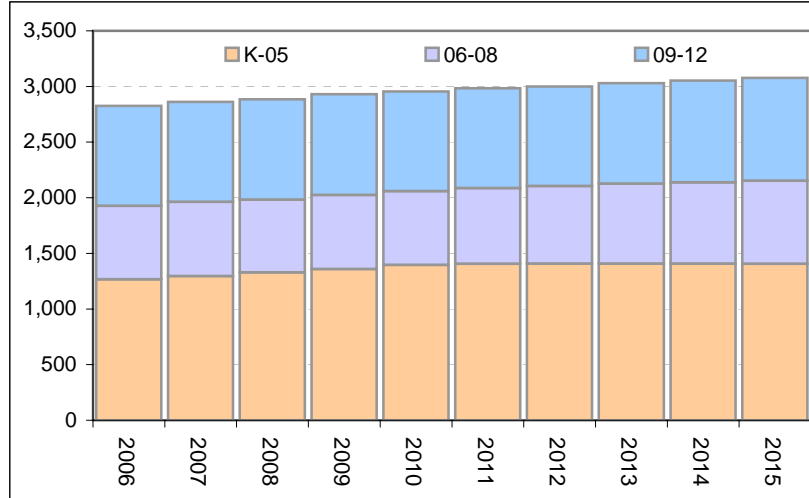
	2006-2010	2010-2015	2006-2015
K-5	2.3	1.9	2.1
6-8	3.0	1.7	2.4
9-12	0.8	2.4	1.8
Total K-12	2.0	2.0	2.1

Enrollment Forecasts by Middle School Attendance Area (MSAA) of Residence, Gresham-Barlow School District 10J, 2005-2015: Medium Growth Scenario

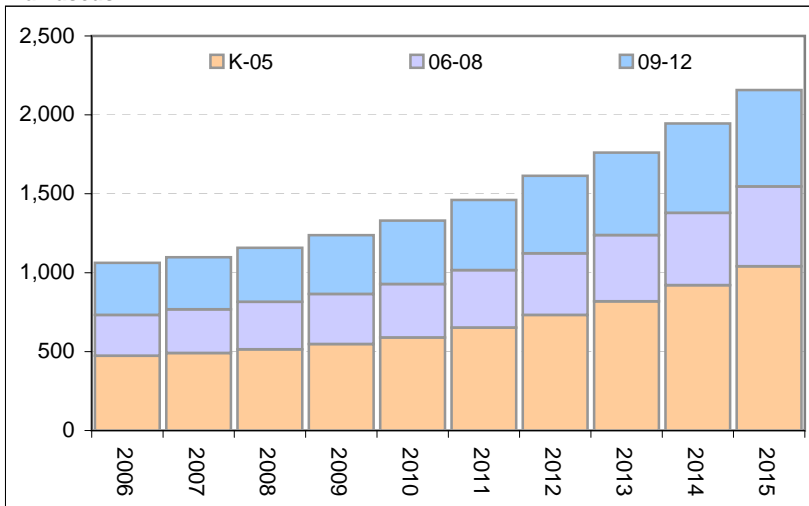
Middle School Attendance Areas (MSAAs)

Students residing outside of the District are not included

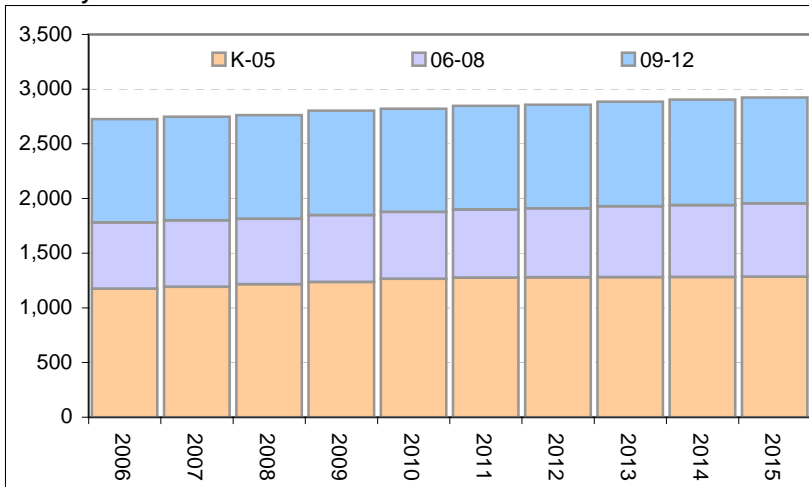
Clear Creek



Damascus



McCarty

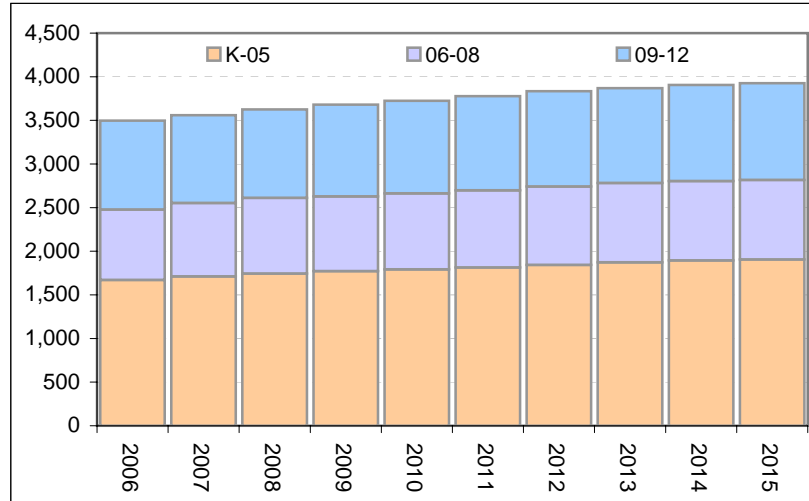


Enrollment Forecasts by Middle School Attendance Area (MSAA) of Residence, Gresham-Barlow School District 10J, 2005-2015: Medium Growth Scenario

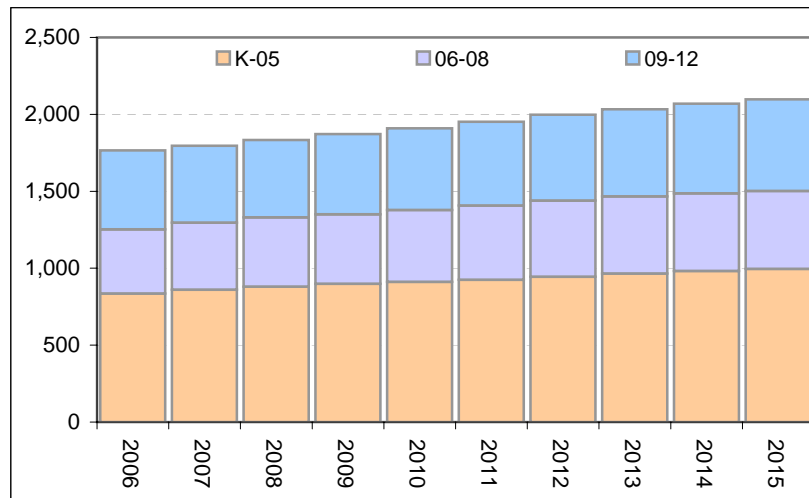
Middle School Attendance Areas (MSAAs)

Students residing outside of the District are not included

Russell



W. Orient



**Enrollment Forecasts by ESAA of Residence,
Gresham-Barlow School District 10J, 2005-2015:
Medium Growth Assumptions**

Households (actual and projected)

ESAA	1990	2000	2005	2010	2015
Deep Creek	1,749	1,950	2,044	2,750	4,880
E. Gresham	1,289	1,923	2,176	2,227	2,278
E. Orient	1,628	2,028	2,324	2,516	2,725
Hall	2,458	3,003	3,017	3,112	3,211
Highland	1,890	2,419	2,523	2,602	2,683
Hogan Cedars	1,261	2,539	2,774	3,082	3,424
Hollydale	1,094	2,277	2,327	2,366	2,405
Kelly Creek	1,223	1,936	2,646	2,959	3,102
N. Gresham	1,840	2,274	3,048	3,363	3,572
Powell Valley	1,443	1,822	2,107	2,208	2,271
W. Gresham	2,046	2,346	2,437	2,497	2,549
District	17,920	24,518	27,423	29,682	33,102

Household Growth Rates

ESAA	1990-2000	2000-05	2005-10	2010-15
Deep Creek	1.2	1.0	6.1	12.2
E. Gresham	4.9	2.6	0.5	0.5
E. Orient	2.5	2.9	1.6	1.6
Hall	2.2	0.1	0.6	0.6
Highland	2.8	0.9	0.6	0.6
Hogan Cedars	10.1	1.9	2.1	2.1
Hollydale	10.8	0.4	0.3	0.3
Kelly Creek	5.8	7.3	2.3	0.9
N. Gresham	2.4	6.8	2.0	1.2
Powell Valley	2.6	3.1	0.9	0.6
W. Gresham	1.5	0.8	0.5	0.4
District	3.7	2.4	1.6	2.2

Households and Students: Assumptions

ESAA	Average Households (HH) 2002-2004	Average students 2002-2004	Students per HH 2002-2004	Projected Students 2015	Students per HH 2015
Deep Creek	2,006	1,090	0.543	2,178	0.446
E. Gresham	2,072	915	0.442	932	0.409
E. Orient	2,202	1,178	0.535	1,414	0.519
Hall	3,011	1,036	0.344	1,126	0.351
Highland	2,481	1,117	0.450	1,124	0.419
Hogan Cedars	2,678	1,132	0.423	724	0.405
Hollydale	2,307	1,054	0.457	1,018	0.423
Kelly Creek	2,338	1,208	0.517	1,594	0.514
N. Gresham	2,714	1,167	0.430	1,423	0.398
Powell Valley	1,989	1,132	0.569	1,284	0.566
W. Gresham	2,400	971	0.405	964	0.378
District	26,197	12,000	0.458	13,782	0.436

**Enrollment Forecasts by MSAA of Residence,
Gresham-Barlow School District 10J, 2005-2015:
Medium Growth Assumptions**

Households (actual and projected)

MSAA	1990	2000	2005	2010	2015
Clear Creek	4,317	6,081	6,982	7,395	7,691
Damascus	1,749	1,950	2,044	2,750	4,880
McCarty	4,504	6,627	7,098	7,352	7,548
Russell	5,124	6,762	7,775	8,206	8,499
W. Orient	2,227	3,098	3,523	3,972	4,479
District	17,920	24,518	27,422	29,676	33,096

Household Growth Rates

MSAA	1990-2000	2000-05	2005-10	2010-15
Clear Creek	4.1	3.0	1.2	0.8
Damascus	1.2	1.0	6.1	12.2
McCarty	4.7	1.4	0.7	0.5
Russell	3.2	3.0	1.1	0.7
W. Orient	3.9	2.7	2.4	2.4
District	3.7	2.4	1.6	2.2

Households and Students: Assumptions

MSAA	Average Households (HH) 2002-2004	Average students 2002-2004	Students per HH 2002-2004	Projected Students 2015	Students per HH 2015
Clear Creek	6,608	2,911	0.440	3,148	0.409
Damascus	2,006	1,090	0.543	2,178	0.446
McCarty	6,906	2,876	0.416	2,977	0.394
Russell	7,355	3,378	0.459	4,005	0.471
W. Orient	3,347	1,745	0.521	2,138	0.477
District	26,222	12,000	0.458	14,445	0.436

2006-2015 Enrollment Forecasts by School Attending, Gresham-Barlow School District

Elementary Schools

Deep Creek	2005	2006	2007	2008	2009	2010	2011	2012	2013	2014	2015
K	55	62	65	68	74	80	87	96	105	116	128
1	60	62	63	67	72	78	86	94	103	114	128
2	61	62	66	70	75	81	90	99	108	120	134
3	67	71	73	79	83	90	99	109	120	132	148
4	87	89	92	97	106	112	122	134	147	162	179
5	0	0	0	0	0	0	0	0	0	0	0
Total	330	345	360	381	409	442	484	532	583	644	716

GPR	06/05	07/06	08/07	09/08	10/09	11/10	12/11	13/12	14/13	15/14
01/K	1.119	1.021	1.034	1.046	1.059	1.071	1.077	1.075	1.091	1.104
02/01	1.035	1.079	1.103	1.119	1.136	1.150	1.155	1.149	1.160	1.168
03/02	1.160	1.179	1.194	1.198	1.208	1.215	1.218	1.212	1.225	1.233
04/03	1.322	1.303	1.323	1.332	1.345	1.357	1.360	1.347	1.354	1.356

East Gresham	2005	2006	2007	2008	2009	2010	2011	2012	2013	2014	2015
K	67	76	77	78	79	81	81	82	83	83	83
1	78	80	80	81	83	84	85	86	87	88	88
2	86	88	92	92	93	95	97	98	99	100	100
3	85	90	91	94	94	95	96	97	98	99	100
4	91	93	94	95	98	97	98	99	99	100	100
5	91	95	95	96	96	99	98	99	100	101	101
Total	498	521	529	537	543	551	555	560	566	570	573

GPR	06/05	07/06	08/07	09/08	10/09	11/10	12/11	13/12	14/13	15/14
01/K	1.197	1.062	1.057	1.057	1.057	1.054	1.054	1.058	1.061	1.065
02/01	1.126	1.141	1.145	1.150	1.152	1.151	1.149	1.149	1.147	1.145
03/02	1.047	1.034	1.029	1.021	1.016	1.009	1.005	1.005	1.004	1.003
04/03	1.093	1.048	1.044	1.040	1.037	1.033	1.028	1.024	1.017	1.010
05/04	1.042	1.027	1.022	1.013	1.009	1.006	1.008	1.012	1.012	1.012

East Orient	2005	2006	2007	2008	2009	2010	2011	2012	2013	2014	2015
K	65	74	76	77	80	82	83	85	86	87	89
1	76	79	79	81	83	85	87	89	91	93	94
2	71	73	77	78	80	82	84	86	88	89	91
3	86	92	93	97	98	100	102	105	107	109	111
4	81	83	85	86	90	90	92	94	95	97	98
5	96	101	102	104	105	109	109	111	113	115	117
Total	475	501	512	524	536	549	558	569	580	590	599

GPR	06/05	07/06	08/07	09/08	10/09	11/10	12/11	13/12	14/13	15/14
01/K	1.209	1.075	1.070	1.073	1.072	1.070	1.069	1.073	1.076	1.079
02/01	0.960	0.975	0.978	0.985	0.986	0.986	0.983	0.983	0.981	0.979
03/02	1.291	1.278	1.271	1.265	1.258	1.249	1.244	1.244	1.242	1.241
04/03	0.967	0.929	0.926	0.925	0.921	0.918	0.913	0.909	0.903	0.897
05/04	1.241	1.228	1.221	1.214	1.207	1.205	1.206	1.210	1.210	1.211

2006-2015 Enrollment Forecasts by School Attending, Gresham-Barlow School District

Elementary Schools

Hall	2005	2006	2007	2008	2009	2010	2011	2012	2013	2014	2015
K	89	100	102	104	106	108	109	110	111	112	112
1	76	78	78	79	81	82	83	84	85	86	87
2	98	100	104	105	107	109	111	112	113	115	116
3	97	103	104	108	107	109	110	112	113	114	115
4	68	69	70	71	73	73	74	74	75	76	76
5	80	83	84	85	85	87	87	87	89	90	90
Total	508	534	543	551	559	568	573	580	587	592	597

GPR	06/05	07/06	08/07	09/08	10/09	11/10	12/11	13/12	14/13	15/14
01/K	0.877	0.780	0.776	0.777	0.776	0.774	0.775	0.778	0.780	0.782
02/01	1.316	1.336	1.341	1.348	1.349	1.348	1.346	1.346	1.344	1.342
03/02	1.048	1.037	1.031	1.026	1.019	1.012	1.008	1.009	1.008	1.007
04/03	0.715	0.687	0.684	0.683	0.680	0.677	0.674	0.672	0.667	0.663
05/04	1.224	1.210	1.203	1.195	1.188	1.185	1.188	1.193	1.193	1.193

Highland	2005	2006	2007	2008	2009	2010	2011	2012	2013	2014	2015
K	73	83	84	86	87	89	90	91	91	92	92
1	102	105	106	107	109	111	113	114	115	117	118
2	94	96	101	101	103	105	107	108	109	111	112
3	97	103	104	108	108	109	111	112	114	115	116
4	98	100	102	103	106	106	107	108	109	110	110
5	84	88	89	90	90	92	91	92	94	94	95
Total	548	576	586	595	603	613	618	625	632	638	643

GPR	06/05	07/06	08/07	09/08	10/09	11/10	12/11	13/12	14/13	15/14
01/K	1.443	1.277	1.271	1.270	1.271	1.267	1.267	1.272	1.276	1.280
02/01	0.945	0.955	0.959	0.962	0.965	0.963	0.962	0.962	0.960	0.959
03/02	1.098	1.082	1.076	1.068	1.063	1.054	1.051	1.051	1.050	1.049
04/03	1.036	0.990	0.987	0.983	0.980	0.975	0.972	0.968	0.962	0.955
05/04	0.896	0.882	0.877	0.870	0.866	0.863	0.865	0.869	0.869	0.869

Hogan Cedars	2005	2006	2007	2008	2009	2010	2011	2012	2013	2014	2015
K	74	85	87	90	93	96	99	101	103	105	107
1	97	101	103	106	109	113	116	119	122	125	128
2	101	105	111	113	117	121	124	128	131	134	137
3	88	95	97	102	103	106	109	112	115	118	120
4	86	89	92	94	98	99	101	104	106	108	110
5	80	84	86	89	90	94	94	97	99	101	104
Total	526	559	576	594	611	629	644	660	676	692	706

GPR	06/05	07/06	08/07	09/08	10/09	11/10	12/11	13/12	14/13	15/14
01/K	1.367	1.214	1.209	1.209	1.209	1.205	1.205	1.210	1.213	1.216
02/01	1.079	1.095	1.099	1.103	1.105	1.103	1.102	1.102	1.099	1.097
03/02	0.936	0.926	0.922	0.915	0.910	0.903	0.900	0.900	0.899	0.897
04/03	1.012	0.971	0.969	0.965	0.961	0.957	0.953	0.949	0.942	0.936
05/04	0.983	0.971	0.966	0.957	0.953	0.950	0.952	0.955	0.955	0.956

2006-2015 Enrollment Forecasts by School Attending, Gresham-Barlow School District

Elementary Schools

Hollydale	2005	2006	2007	2008	2009	2010	2011	2012	2013	2014	2015
K	63	71	72	73	74	75	76	76	77	77	77
1	78	80	80	81	82	83	84	85	86	87	87
2	79	81	84	84	85	87	88	89	90	90	91
3	67	71	71	74	74	74	75	76	77	77	78
4	71	72	73	74	76	75	76	76	77	77	77
5	69	72	72	73	72	74	74	74	75	75	76
Total	427	446	453	458	464	469	473	476	480	483	486

GPR	06/05	07/06	08/07	09/08	10/09	11/10	12/11	13/12	14/13	15/14
01/K	1.271	1.128	1.123	1.122	1.122	1.119	1.120	1.124	1.127	1.131
02/01	1.033	1.047	1.051	1.054	1.057	1.056	1.054	1.054	1.052	1.051
03/02	0.897	0.886	0.882	0.875	0.871	0.864	0.861	0.862	0.861	0.860
04/03	1.080	1.035	1.033	1.028	1.025	1.020	1.016	1.012	1.006	0.999
05/04	1.010	0.997	0.992	0.983	0.979	0.976	0.978	0.982	0.982	0.983

Kelly Creek	2005	2006	2007	2008	2009	2010	2011	2012	2013	2014	2015
K	77	89	93	96	99	101	103	104	105	106	107
1	90	95	97	100	103	106	108	109	111	113	114
2	70	73	78	80	82	84	86	88	89	90	92
3	70	76	79	83	84	85	87	88	90	91	92
4	103	108	112	115	120	120	122	123	125	126	127
5	93	99	102	105	106	110	110	111	113	115	116
Total	503	541	561	580	594	607	616	624	633	641	648

GPR	06/05	07/06	08/07	09/08	10/09	11/10	12/11	13/12	14/13	15/14
01/K	1.233	1.091	1.082	1.073	1.070	1.066	1.064	1.068	1.071	1.074
02/01	0.815	0.824	0.823	0.820	0.819	0.818	0.815	0.814	0.813	0.812
03/02	1.087	1.071	1.061	1.045	1.037	1.028	1.022	1.022	1.021	1.020
04/03	1.541	1.474	1.463	1.445	1.437	1.429	1.420	1.414	1.405	1.396
05/04	0.965	0.950	0.940	0.925	0.918	0.915	0.915	0.918	0.918	0.919

North Gresham	2005	2006	2007	2008	2009	2010	2011	2012	2013	2014	2015
K	85	98	102	105	108	110	112	114	115	117	118
1	97	102	104	107	110	112	115	117	119	121	123
2	83	87	92	94	96	99	101	103	105	107	108
3	72	78	80	84	85	86	88	90	92	93	95
4	93	97	101	103	107	107	109	110	112	113	114
5	81	87	89	91	91	95	94	96	98	99	101
Total	511	550	568	583	596	610	619	629	640	650	659

GPR	06/05	07/06	08/07	09/08	10/09	11/10	12/11	13/12	14/13	15/14
01/K	1.204	1.059	1.050	1.046	1.045	1.041	1.041	1.045	1.048	1.052
02/01	0.896	0.901	0.900	0.900	0.902	0.900	0.899	0.899	0.897	0.896
03/02	0.943	0.924	0.915	0.905	0.900	0.892	0.889	0.889	0.888	0.887
04/03	1.352	1.286	1.276	1.267	1.262	1.255	1.250	1.245	1.237	1.228
05/04	0.930	0.911	0.901	0.891	0.886	0.882	0.885	0.888	0.888	0.889

2006-2015 Enrollment Forecasts by School Attending, Gresham-Barlow School District

Elementary Schools

Powell Valley	2005	2006	2007	2008	2009	2010	2011	2012	2013	2014	2015
K	78	89	91	92	94	96	97	97	98	99	99
1	92	95	96	97	99	101	102	103	105	106	107
2	76	78	82	82	84	86	87	88	89	90	91
3	92	98	100	104	103	105	106	107	109	110	111
4	74	76	78	78	81	81	81	82	83	83	83
5	78	82	83	84	84	86	86	86	87	88	89
Total	490	518	529	538	546	554	559	565	571	576	580

GPR	06/05	07/06	08/07	09/08	10/09	11/10	12/11	13/12	14/13	15/14
01/K	1.221	1.083	1.074	1.074	1.071	1.069	1.069	1.073	1.076	1.080
02/01	0.849	0.861	0.860	0.863	0.864	0.863	0.862	0.862	0.860	0.859
03/02	1.291	1.275	1.264	1.254	1.246	1.236	1.232	1.233	1.231	1.230
04/03	0.826	0.792	0.787	0.784	0.780	0.776	0.773	0.770	0.765	0.760
05/04	1.105	1.090	1.080	1.071	1.064	1.061	1.064	1.067	1.068	1.068

West Gresham	2005	2006	2007	2008	2009	2010	2011	2012	2013	2014	2015
K	50	56	57	58	59	60	61	61	61	62	62
1	61	63	63	63	65	66	66	67	68	68	69
2	61	62	65	65	66	67	68	69	70	70	71
3	57	60	61	63	63	64	64	65	66	66	67
4	56	57	58	58	60	60	60	61	61	61	61
5	64	67	67	68	68	69	69	69	70	71	71
Total	349	365	371	376	381	386	389	392	396	398	401

GPR	06/05	07/06	08/07	09/08	10/09	11/10	12/11	13/12	14/13	15/14
01/K	1.253	1.114	1.108	1.108	1.106	1.104	1.104	1.108	1.112	1.115
02/01	1.020	1.036	1.039	1.043	1.044	1.044	1.042	1.042	1.040	1.038
03/02	0.989	0.978	0.973	0.966	0.960	0.953	0.950	0.950	0.949	0.948
04/03	1.001	0.962	0.958	0.955	0.951	0.947	0.943	0.939	0.933	0.927
05/04	1.188	1.175	1.168	1.158	1.152	1.149	1.151	1.156	1.156	1.157

Middle Schools

Clear Creek	2005	2006	2007	2008	2009	2010	2011	2012	2013	2014	2015
6	216	230	229	231	234	235	244	244	248	252	256
7	226	243	251	251	254	258	260	269	268	270	271
8	218	219	231	237	234	236	239	241	251	250	252
Total	660	692	711	719	723	730	743	754	767	772	779

GPR	06/05	07/06	08/07	09/08	10/09	11/10	12/11	13/12	14/13	15/14
07/06	1.125	1.091	1.094	1.098	1.102	1.107	1.105	1.099	1.088	1.077
08/07	0.968	0.948	0.944	0.934	0.930	0.926	0.927	0.932	0.933	0.935

2006-2015 Enrollment Forecasts by School Attending, Gresham-Barlow School District

Middle Schools

Damascus	2005	2006	2007	2008	2009	2010	2011	2012	2013	2014	2015
5	93	97	100	107	114	125	134	147	161	178	197
6	82	84	85	89	95	101	114	124	136	151	168
7	91	94	99	103	110	118	129	145	156	171	189
8	87	84	90	96	100	107	118	129	145	157	175
Total	353	359	375	394	419	450	495	545	597	657	730

GPR	06/05	07/06	08/07	09/08	10/09	11/10	12/11	13/12	14/13	15/14
06/05	0.901	0.878	0.890	0.895	0.885	0.911	0.921	0.924	0.938	0.946
07/06	1.145	1.182	1.202	1.228	1.233	1.279	1.273	1.260	1.258	1.257
08/07	0.921	0.960	0.970	0.976	0.972	1.000	0.998	0.998	1.009	1.020

D. McCarty	2005	2006	2007	2008	2009	2010	2011	2012	2013	2014	2015
6	234	248	246	247	250	250	258	258	262	265	268
7	186	199	205	204	206	209	210	217	215	216	216
8	221	221	232	237	234	235	237	239	248	246	248
Total	641	668	683	688	689	694	705	714	724	727	732

GPR	06/05	07/06	08/07	09/08	10/09	11/10	12/11	13/12	14/13	15/14
07/06	0.851	0.826	0.827	0.832	0.836	0.838	0.839	0.832	0.824	0.816
08/07	1.187	1.164	1.157	1.148	1.143	1.136	1.141	1.143	1.147	1.149

G. Russell	2005	2006	2007	2008	2009	2010	2011	2012	2013	2014	2015
6	256	267	265	267	271	271	280	280	284	288	292
7	244	257	265	264	267	272	273	282	280	282	283
8	265	260	274	281	277	280	282	284	295	294	296
Total	765	784	804	813	816	823	835	846	859	864	871

GPR	06/05	07/06	08/07	09/08	10/09	11/10	12/11	13/12	14/13	15/14
07/06	1.003	0.993	0.994	1.000	1.003	1.005	1.006	0.999	0.990	0.979
08/07	1.066	1.067	1.061	1.051	1.046	1.038	1.043	1.047	1.050	1.052

West Orient	2005	2006	2007	2008	2009	2010	2011	2012	2013	2014	2015
6	125	128	129	131	134	136	143	145	148	152	156
7	135	140	145	147	150	155	158	165	166	168	171
8	142	137	146	151	151	154	158	161	169	170	173
Total	402	405	420	429	436	445	458	470	483	491	499

GPR	06/05	07/06	08/07	09/08	10/09	11/10	12/11	13/12	14/13	15/14
07/06	1.118	1.134	1.140	1.147	1.151	1.156	1.153	1.145	1.134	1.121
08/07	1.017	1.041	1.039	1.031	1.025	1.021	1.022	1.026	1.027	1.029

2006-2015 Enrollment Forecasts by School Attending, Gresham-Barlow School District

High Schools

Gresham	2005	2006	2007	2008	2009	2010	2011	2012	2013	2014	2015
9	422	458	437	458	471	464	467	467	468	480	473
10	487	483	504	474	491	499	489	492	499	501	517
11	430	445	430	451	429	446	457	448	452	454	453
12	438	446	441	429	453	431	447	453	442	439	437
Total	1777	1832	1812	1811	1844	1840	1859	1860	1861	1875	1879

GPR	06/05	07/06	08/07	09/08	10/09	11/10	12/11	13/12	14/13	15/14
10/09	1.184	1.094	1.080	1.067	1.054	1.048	1.048	1.063	1.066	1.073
11/10	0.959	0.903	0.908	0.919	0.922	0.931	0.931	0.933	0.924	0.918
12/11	1.092	0.995	1.000	1.008	1.008	1.005	0.993	0.989	0.975	0.964

Barlow	2005	2006	2007	2008	2009	2010	2011	2012	2013	2014	2015
9	519	572	551	586	610	612	629	650	663	696	705
10	481	484	511	488	511	528	529	549	568	584	619
11	443	465	454	484	466	492	517	522	536	553	566
12	417	430	431	425	454	440	466	487	485	494	504
Total	1860	1950	1948	1983	2041	2072	2141	2209	2252	2328	2393

GPR	06/05	07/06	08/07	09/08	10/09	11/10	12/11	13/12	14/13	15/14
10/09	0.964	0.889	0.880	0.866	0.861	0.861	0.868	0.869	0.878	0.884
11/10	1.015	0.954	0.961	0.969	0.979	0.993	1.002	0.992	0.988	0.982
12/11	1.024	0.931	0.938	0.942	0.948	0.950	0.947	0.931	0.924	0.914

Spring Water Trail	2005	2006	2007	2008	2009	2010	2011	2012	2013	2014	2015
9	38	42	40	42	44	43	44	45	46	47	48
10	34	34	36	34	35	36	36	37	37	38	40
11	44	46	45	47	45	47	49	49	50	51	51
12	46	47	47	46	49	47	49	51	50	50	51
Total	162	168	167	169	173	174	178	181	183	187	189

GPR	06/05	07/06	08/07	09/08	10/09	11/10	12/11	13/12	14/13	15/14
10/09	0.893	0.857	0.847	0.834	0.826	0.823	0.826	0.831	0.835	0.840
11/10	1.348	1.313	1.322	1.336	1.345	1.362	1.369	1.363	1.355	1.347
12/11	1.071	1.024	1.031	1.036	1.039	1.038	1.030	1.019	1.008	0.997

2006-2015 Enrollment Forecasts by School Attending, Gresham-Barlow School District

Elementary Schools: Growth Rates, Percent

Deep Creek

Percent change	2006-2010	2010-2015	2006-2015
KG	29.3	60.5	107.5
01	26.6	63.7	107.2
02	31.0	64.1	114.9
03	27.4	63.7	108.6
04	26.7	60.0	102.7
05	-	-	-
Total	28.0	62.3	107.8

Average Annual Change, Percent	2006-2010	2010-2015	2006-2015
KG	7.3	12.1	11.9
01	6.6	12.7	11.9
02	7.7	12.8	12.8
03	6.8	12.7	12.1
04	6.7	12.0	11.4
05	-	-	-
Total	7.0	9.6	12.0

East Gresham

Percent change	2006-2010	2010-2015	2006-2015
KG	6.9	3.1	10.2
01	4.7	5.2	10.1
02	8.3	5.5	14.2
03	5.3	5.2	10.8
04	4.7	2.8	7.7
05	4.3	2.5	6.9
Total	5.7	4.0	9.9

Average Annual Change, Percent	2006-2010	2010-2015	2006-2015
KG	1.7	0.6	1.1
01	1.2	1.0	1.1
02	2.1	1.1	1.6
03	1.3	1.0	1.2
04	1.2	0.6	0.9
05	1.1	0.5	0.8
Total	1.4	1.2	1.1

East Orient

Percent change	2006-2010	2010-2015	2006-2015
KG	10.9	8.2	20.1
01	8.6	10.4	19.9
02	12.4	10.7	24.4
03	9.3	10.4	20.7
04	8.7	7.9	17.3
05	8.2	7.6	16.4
Total	9.6	9.2	19.6

Average Annual Change, Percent	2006-2010	2010-2015	2006-2015
KG	2.7	1.6	2.2
01	2.2	2.1	2.2
02	3.1	2.1	2.7
03	2.3	2.1	2.3
04	2.2	1.6	1.9
05	2.0	1.5	1.8
Total	2.4	2.2	2.2

2006-2015 Enrollment Forecasts by School Attending, Gresham-Barlow School District

Elementary Schools: Growth Rates, Percent

Hall

Percent change	2006-2010	2010-2015	2006-2015
KG	7.5	4.1	11.9
01	5.3	6.2	11.8
02	8.9	6.4	15.9
03	6.0	6.2	12.5
04	5.3	3.8	9.3
05	4.9	3.5	8.5
Total	6.5	5.1	11.9

Average Annual Change, Percent	2006-2010	2010-2015	2006-2015
KG	1.9	0.8	1.3
01	1.3	1.2	1.3
02	2.2	1.3	1.8
03	1.5	1.2	1.4
04	1.3	0.8	1.0
05	1.2	0.7	0.9
Total	1.6	1.4	1.3

Highland

Percent change	2006-2010	2010-2015	2006-2015
KG	7.6	3.9	11.9
01	5.4	6.1	11.8
02	9.0	6.3	15.9
03	6.1	6.1	12.5
04	5.4	3.6	9.3
05	5.0	3.3	8.5
Total	6.4	5.0	11.7

Average Annual Change, Percent	2006-2010	2010-2015	2006-2015
KG	1.9	0.8	1.3
01	1.3	1.2	1.3
02	2.3	1.3	1.8
03	1.5	1.2	1.4
04	1.4	0.7	1.0
05	1.2	0.7	0.9
Total	1.6	1.4	1.3

Hogan Cedars

Percent change	2006-2010	2010-2015	2006-2015
KG	13.9	11.1	26.5
01	11.5	13.4	26.4
02	15.3	13.7	31.1
03	12.2	13.4	27.2
04	11.5	10.8	23.6
05	11.0	10.5	22.7
Total	12.6	12.3	26.4

Average Annual Change, Percent	2006-2010	2010-2015	2006-2015
KG	3.5	2.2	2.9
01	2.9	2.7	2.9
02	3.8	2.7	3.5
03	3.0	2.7	3.0
04	2.9	2.2	2.6
05	2.8	2.1	2.5
Total	3.2	2.9	2.9

2006-2015 Enrollment Forecasts by School Attending, Gresham-Barlow School District

Elementary Schools: Growth Rates, Percent

Hollydale

Percent change	2006-2010	2010-2015	2006-2015
KG	6.3	2.5	8.9
01	4.1	4.6	8.8
02	7.7	4.8	12.9
03	4.8	4.6	9.5
04	4.2	2.2	6.4
05	3.7	1.9	5.6
Total	5.2	3.5	8.8

Average Annual Change, Percent	2006-2010	2010-2015	2006-2015
KG	1.6	0.5	1.0
01	1.0	0.9	1.0
02	1.9	1.0	1.4
03	1.2	0.9	1.1
04	1.0	0.4	0.7
05	0.9	0.4	0.6
Total	1.3	1.0	1.0

Kelly Creek

Percent change	2006-2010	2010-2015	2006-2015
KG	13.7	5.9	20.4
01	11.3	8.1	20.3
02	15.2	8.4	24.8
03	12.0	8.1	21.1
04	11.4	5.6	17.7
05	10.9	5.3	16.8
Total	12.3	6.8	19.9

Average Annual Change, Percent	2006-2010	2010-2015	2006-2015
KG	3.4	1.2	2.3
01	2.8	1.6	2.3
02	3.8	1.7	2.8
03	3.0	1.6	2.3
04	2.8	1.1	2.0
05	2.7	1.1	1.9
Total	3.1	2.2	2.2

North Gresham

Percent change	2006-2010	2010-2015	2006-2015
KG	12.2	7.1	20.2
01	9.8	9.3	20.1
02	13.6	9.6	24.5
03	10.5	9.3	20.8
04	9.9	6.8	17.4
05	9.4	6.5	16.5
Total	10.9	8.1	19.9

Average Annual Change, Percent	2006-2010	2010-2015	2006-2015
KG	3.0	1.4	2.2
01	2.5	1.9	2.2
02	3.4	1.9	2.7
03	2.6	1.9	2.3
04	2.5	1.4	1.9
05	2.4	1.3	1.8
Total	2.7	2.2	2.2

2006-2015 Enrollment Forecasts by School Attending, Gresham-Barlow School District

Elementary Schools: Growth Rates, Percent

Powell Valley

Percent change	2006-2010	2010-2015	2006-2015
KG	8.3	3.7	12.2
01	6.0	5.8	12.1
02	9.7	6.0	16.3
03	6.7	5.8	12.9
04	6.1	3.4	9.7
05	5.6	3.1	8.8
Total	7.0	4.7	12.0

Average Annual Change, Percent	2006-2010	2010-2015	2006-2015
KG	2.1	0.7	1.4
01	1.5	1.2	1.3
02	2.4	1.2	1.8
03	1.7	1.2	1.4
04	1.5	0.7	1.1
05	1.4	0.6	1.0
Total	1.8	1.4	1.3

West Gresham

Percent change	2006-2010	2010-2015	2006-2015
KG	6.9	2.9	10.0
01	4.7	5.0	9.9
02	8.3	5.2	14.0
03	5.3	5.0	10.6
04	4.7	2.6	7.5
05	4.3	2.3	6.7
Total	5.7	3.9	9.8

Average Annual Change, Percent	2006-2010	2010-2015	2006-2015
KG	1.7	0.6	1.1
01	1.2	1.0	1.1
02	2.1	1.0	1.6
03	1.3	1.0	1.2
04	1.2	0.5	0.8
05	1.1	0.5	0.7
Total	1.4	1.1	1.1

Middle Schools: Growth Rates, Percent

Clear Creek

Percent change	2006-2010	2010-2015	2006-2015
6	2.2	8.6	11.0
7	6.3	5.0	11.6
8	8.0	6.9	15.4
Total	5.5	6.8	12.6

Average Annual Change, Percent	2006-2010	2010-2015	2006-2015
6	0.5	1.7	1.2
7	1.6	1.0	1.3
8	2.0	1.4	1.7
Total	1.4	1.4	1.4

2006-2015 Enrollment Forecasts by School Attending, Gresham-Barlow School District

Middle Schools: Growth Rates, Percent

Damascus

Percent change	2006-2010	2010-2015	2006-2015
5	28.6	58.0	103.2
6	20.3	66.7	100.6
7	25.2	61.1	101.6
8	27.1	64.0	108.4
Total	25.4	62.2	103.4

Average Annual Change, Percent	2006-2010	2010-2015	2006-2015
5	7.1	11.6	11.5
6	5.1	13.3	11.2
7	6.3	12.2	11.3
8	6.8	12.8	12.0
Total	6.4	12.4	11.5

D. McCarty

Percent change	2006-2010	2010-2015	2006-2015
6	0.8	7.1	8.1
7	4.9	3.5	8.6
8	6.5	5.4	12.3
Total	3.9	5.5	9.6

Average Annual Change, Percent	2006-2010	2010-2015	2006-2015
6	0.2	1.4	0.9
7	1.2	0.7	1.0
8	1.6	1.1	1.4
Total	1.0	1.1	1.1

G. Russell

Percent change	2006-2010	2010-2015	2006-2015
6	1.7	7.6	9.5
7	5.8	4.0	10.1
8	7.5	5.9	13.8
Total	5.0	5.8	11.1

Average Annual Change, Percent	2006-2010	2010-2015	2006-2015
6	0.4	1.5	1.1
7	1.5	0.8	1.1
8	1.9	1.2	1.5
Total	1.2	1.2	1.2

West Orient

Percent change	2006-2010	2010-2015	2006-2015
6	6.3	14.2	21.4
7	10.6	10.3	22.0
8	12.3	12.3	26.1
Total	9.9	12.2	23.2

Average Annual Change, Percent	2006-2010	2010-2015	2006-2015
6	1.6	2.8	2.4
7	2.7	2.1	2.4
8	3.1	2.5	2.9
Total	2.5	2.4	2.6

2006-2015 Enrollment Forecasts by School Attending, Gresham-Barlow School District

High Schools: Growth Rates, Percent

Gresham

Percent change	2006-2010	2010-2015	2006-2015
9	1.2	1.8	3.1
10	3.3	3.7	7.1
11	0.3	1.6	1.9
12	-3.2	1.2	-2.0
Total	0.5	2.1	2.6

Average Annual Change, Percent	2006-2010	2010-2015	2006-2015
9	0.3	0.4	0.3
10	0.8	0.7	0.8
11	0.1	0.3	0.2
12	-0.8	0.2	-0.2
Total	0.1	0.4	0.3

Barlow

Percent change	2006-2010	2010-2015	2006-2015
9	7.0	15.1	23.2
10	9.2	17.3	28.0
11	6.0	14.9	21.8
12	2.3	14.4	17.1
Total	6.3	15.5	22.7

Average Annual Change, Percent	2006-2010	2010-2015	2006-2015
9	1.8	3.0	2.6
10	2.3	3.5	3.1
11	1.5	3.0	2.4
12	0.6	2.9	1.9
Total	1.6	3.1	2.5

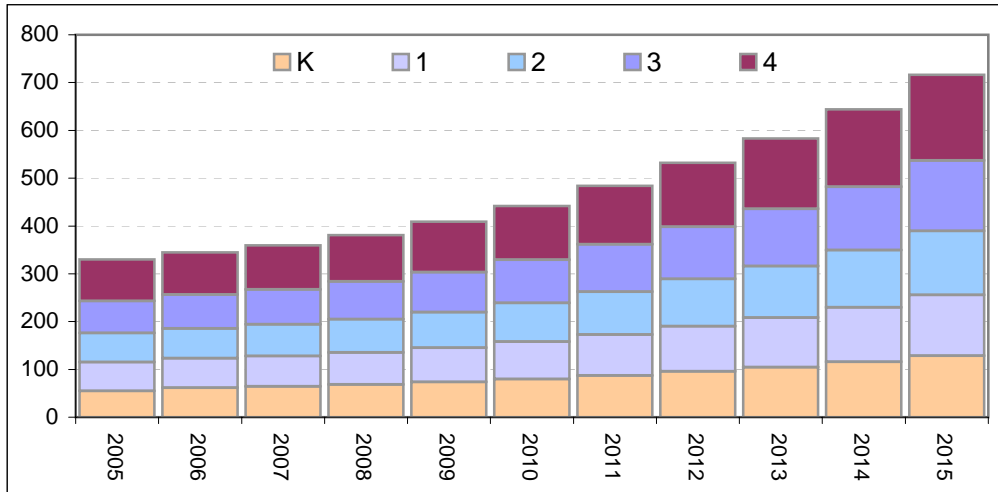
Spring Water Trail

Percent change	2006-2010	2010-2015	2006-2015
9	4.4	9.4	14.3
10	6.2	10.7	17.6
11	3.2	8.6	12.1
12	0.0	7.9	7.4
Total	3.1	9.0	12.4

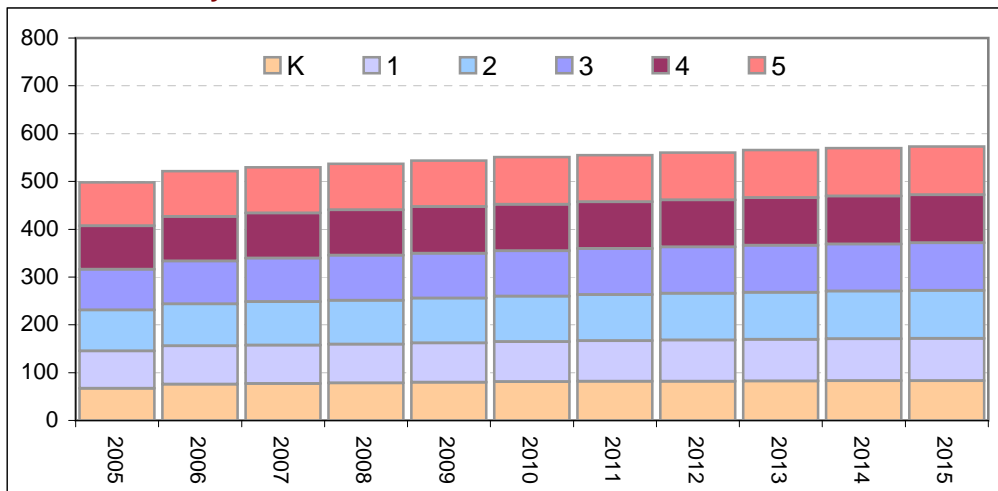
Average Annual Change, Percent	2006-2010	2010-2015	2006-2015
9	1.1	1.9	1.6
10	1.6	2.1	2.0
11	0.8	1.7	1.3
12	-0.1	1.6	0.8
Total	0.8	1.8	1.4

2006-2015 Enrollment Forecasts by School Attending, Gresham-Barlow School District

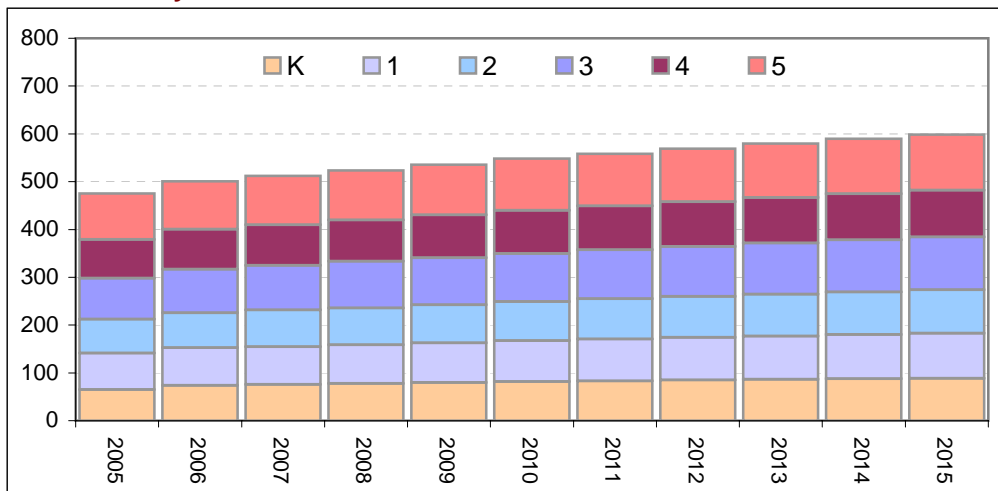
Deep Creek Elementary School



East Gresham Elementary School

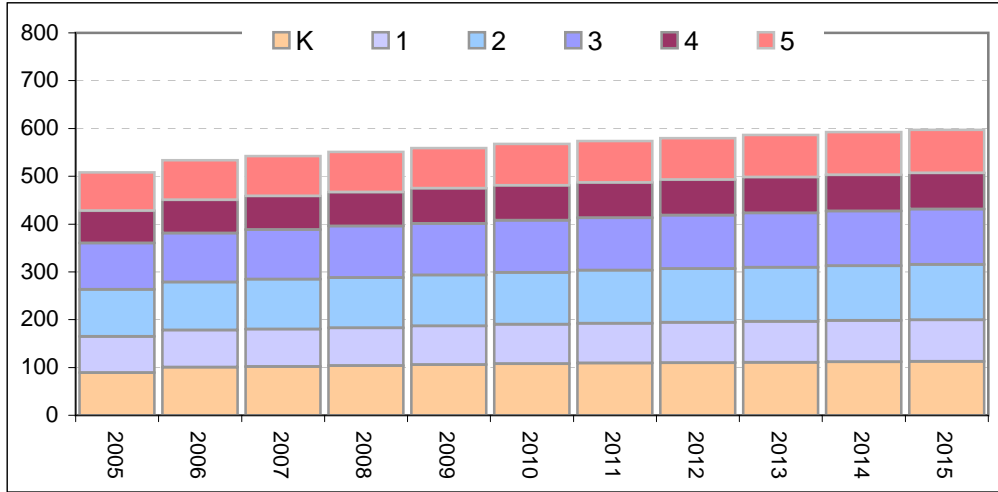


East Orient Elementary School

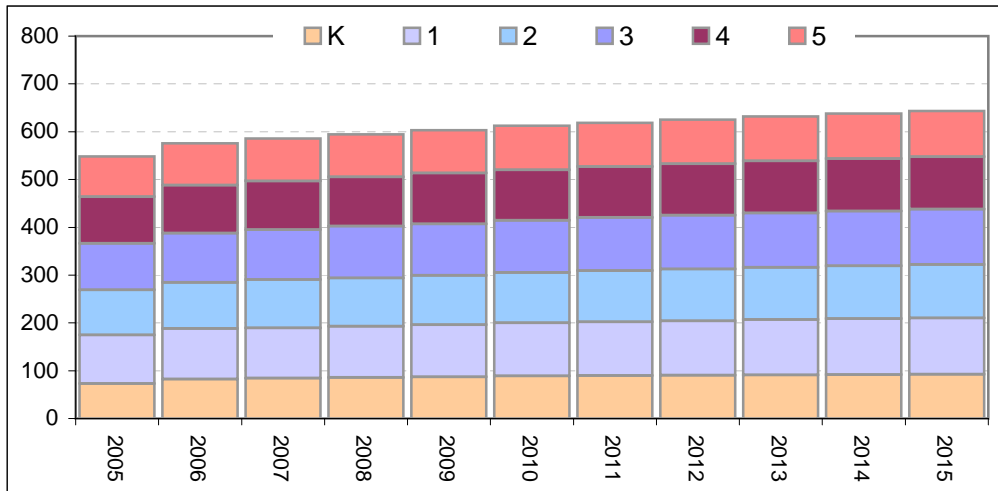


2006-2015 Enrollment Forecasts by School Attending, Gresham-Barlow School District

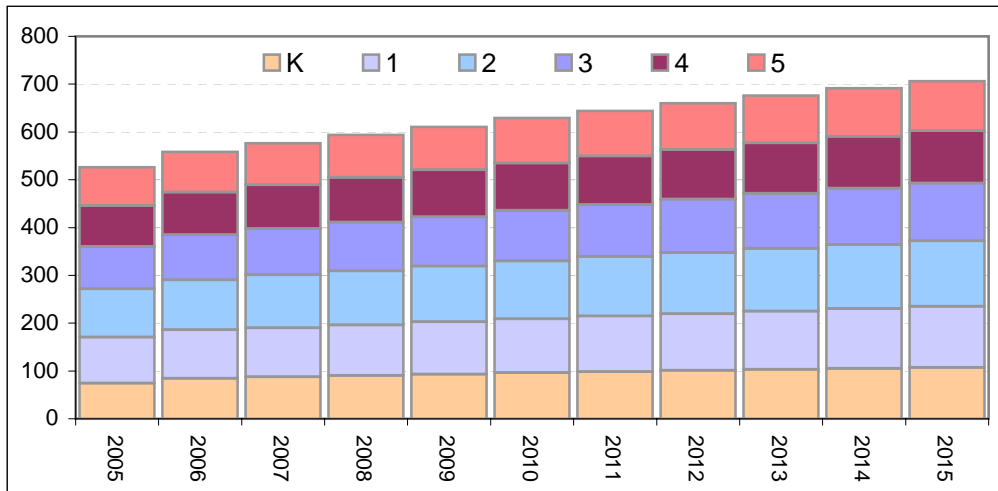
Hall Elementary School



Highland Elementary School

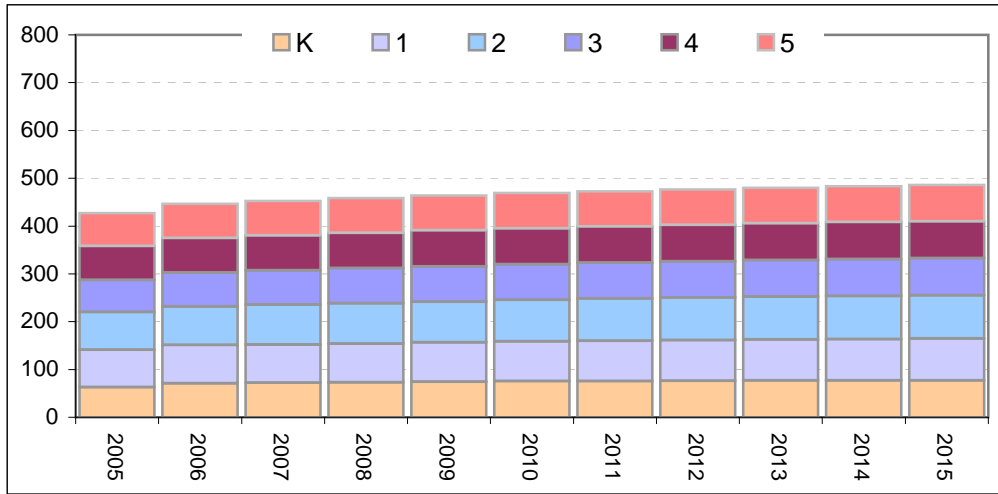


Hogan Cedars Elementary School

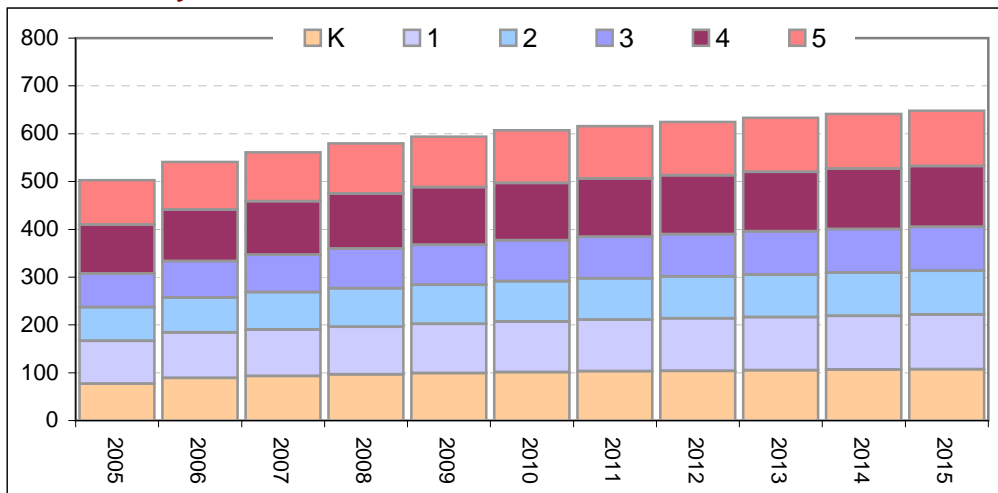


2006-2015 Enrollment Forecasts by School Attending, Gresham-Barlow School District

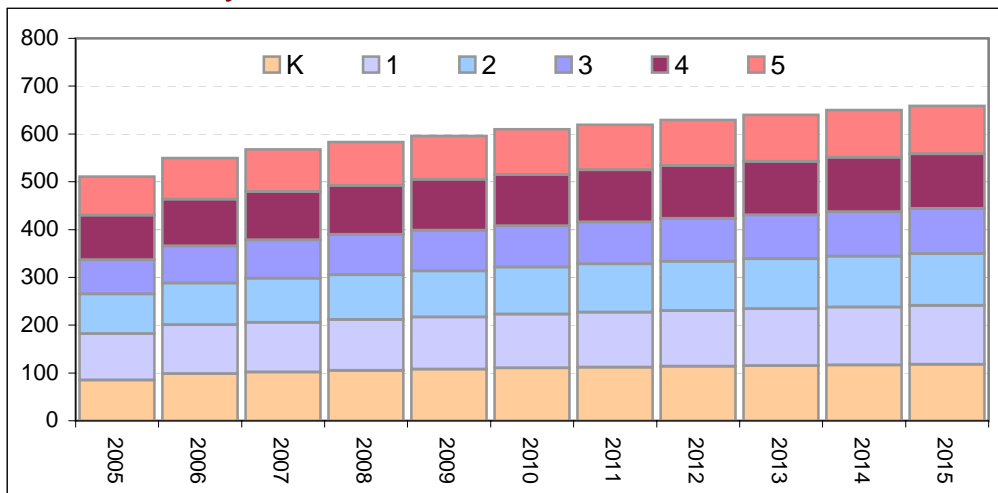
Hollydale Elementary School



Kelly Creek Elementary School

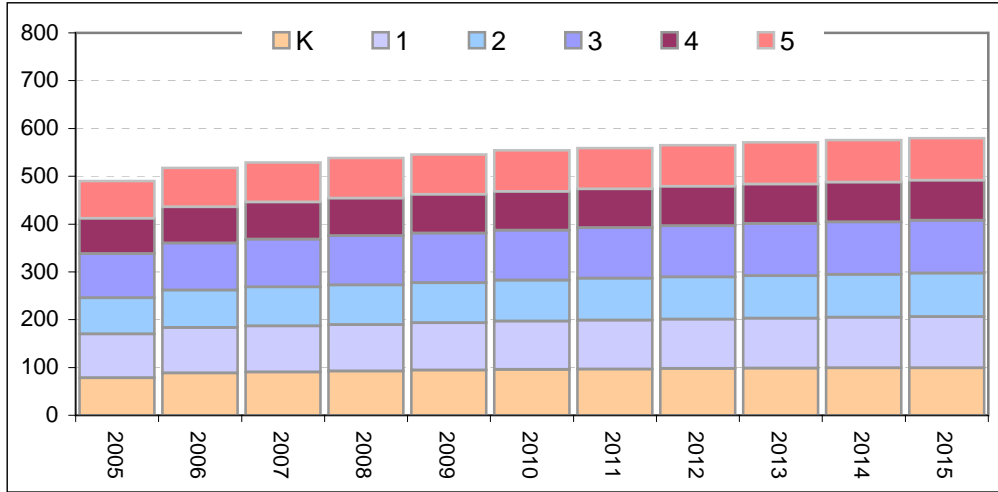


North Gresham Elementary School

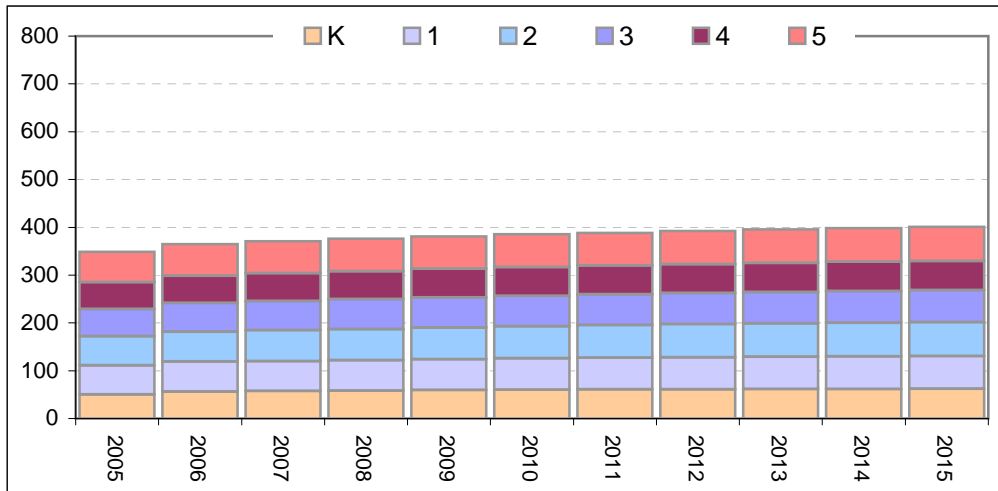


2006-2015 Enrollment Forecasts by School Attending, Gresham-Barlow School District

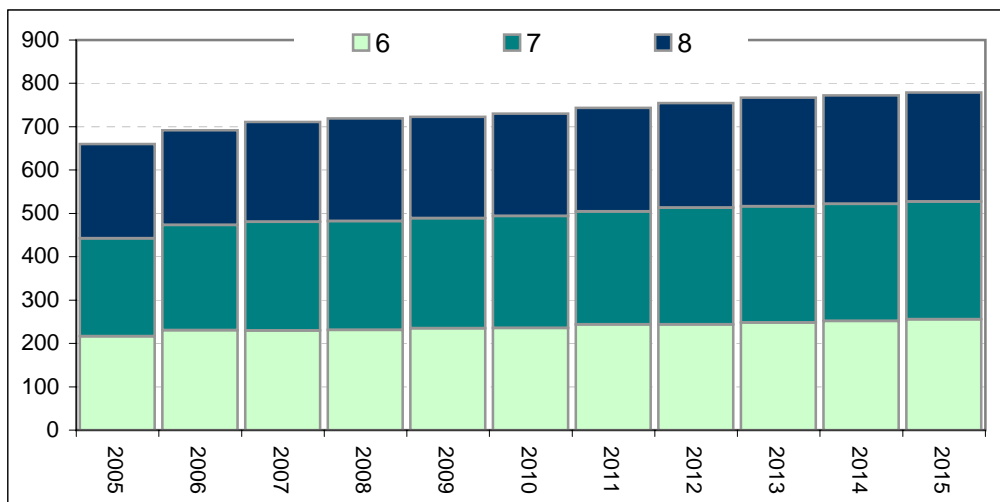
Powell Valley Elementary School



West Gresham Elementary School

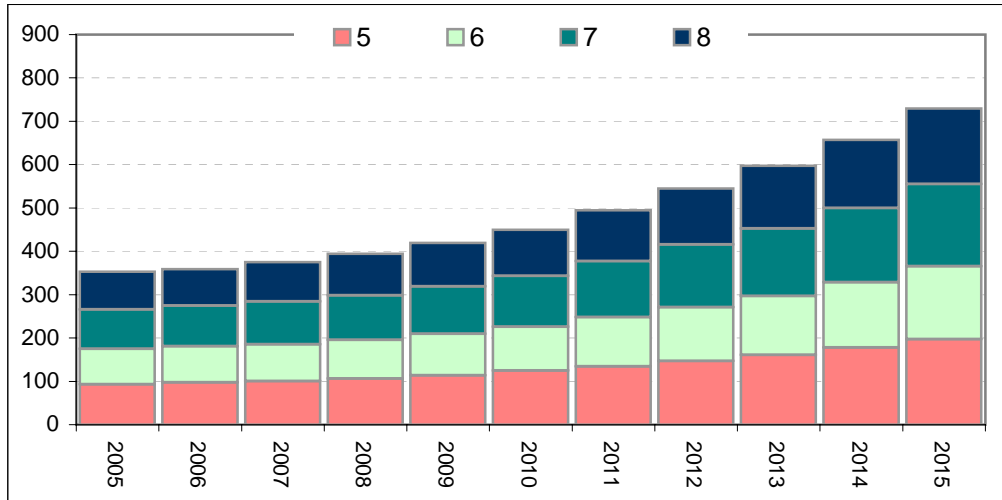


Clear Creek Middle School

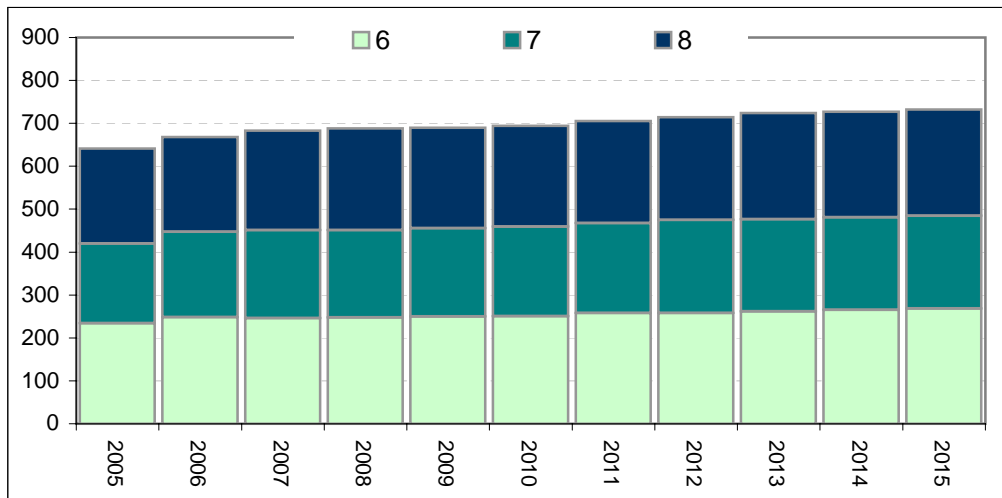


2006-2015 Enrollment Forecasts by School Attending, Gresham-Barlow School District

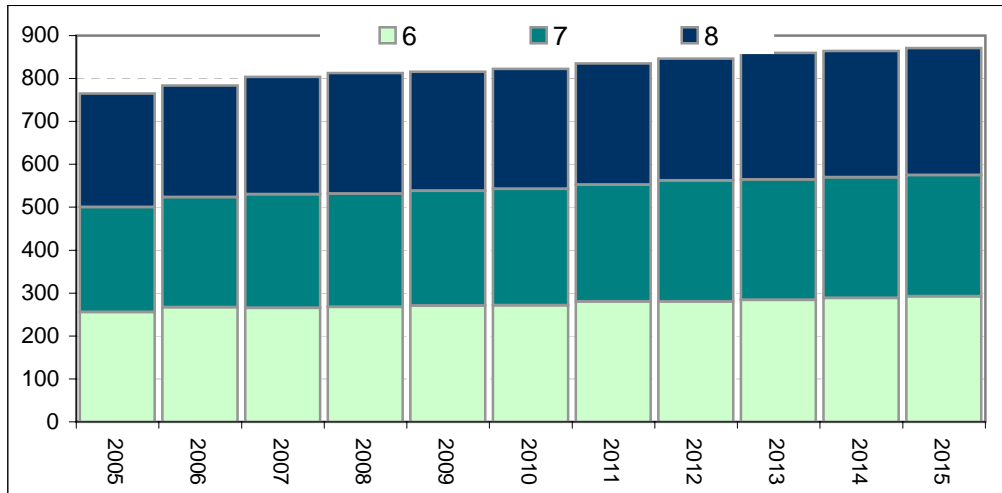
Damascus Middle School



D. McCarty Middle School

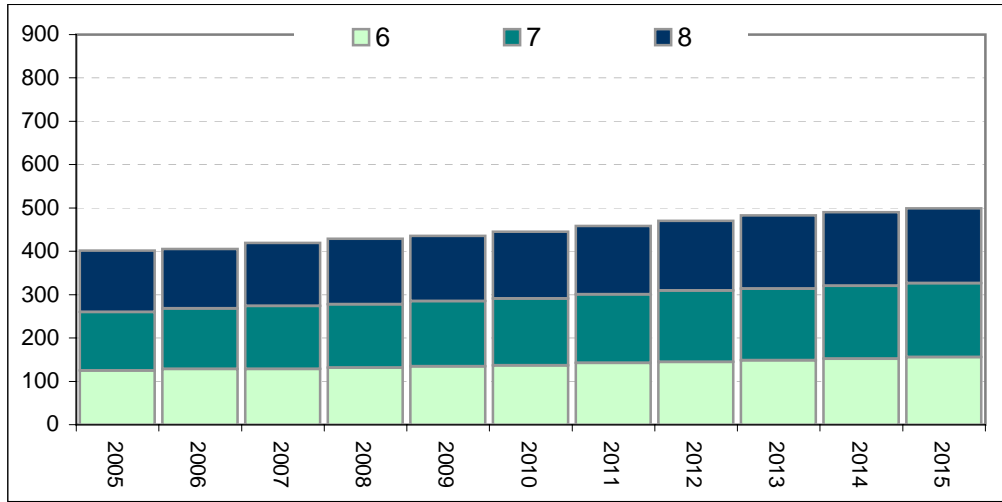


G. Russell Middle School

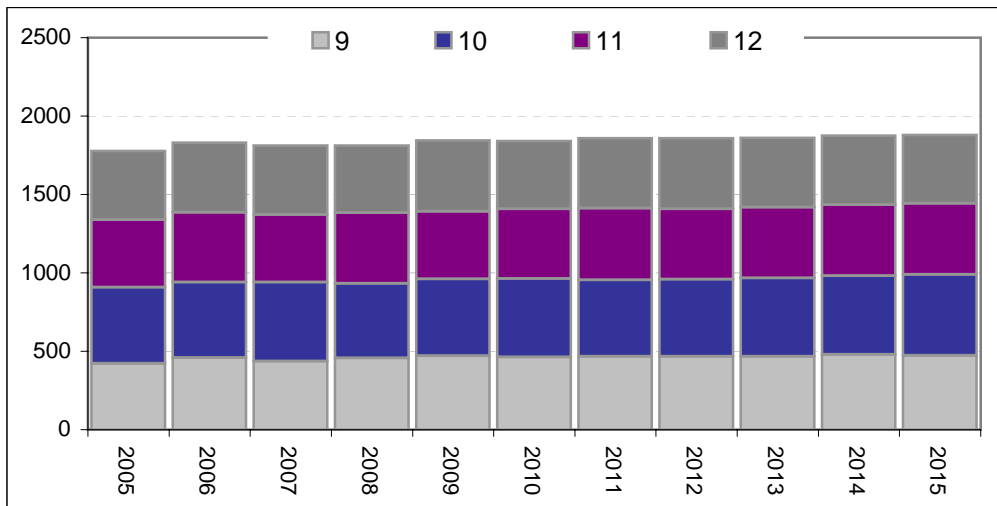


2006-2015 Enrollment Forecasts by School Attending, Gresham-Barlow School District

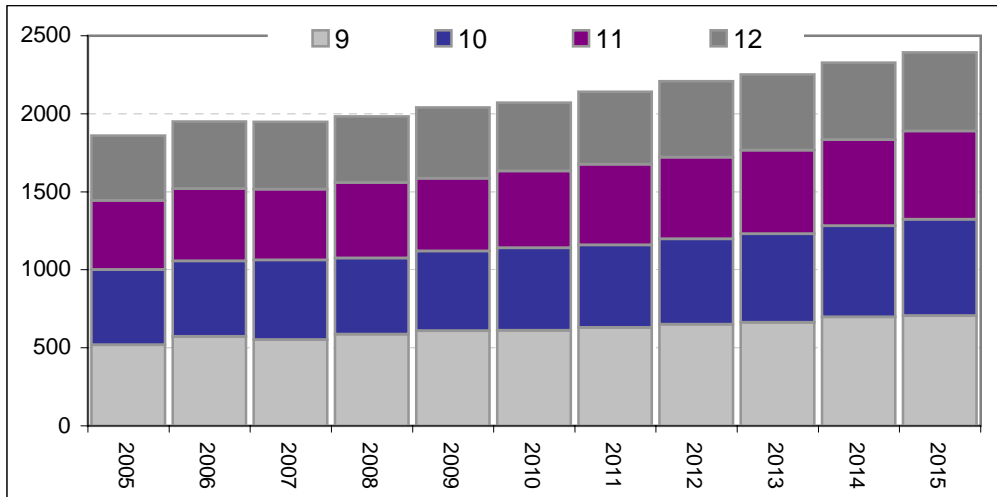
West Orient Middle School



Gresham High School



Barlow High School



**2002-2004 Average Enrollment by ESAA of Residence,
Gresham-Barlow School District 10J**

ALL STUDENTS

2002-2004

GRADE	Deep Creek	E. Gresham	E. Orient	Hall	Highland	Hogan Cedars	Hollydale	Kelly Creek	N. Gresham	Powell Valley	W. Gresham	Outside GBSD
K	89	64	101	122	87	138	111	105	127	110	79	11
01	68	74	72	91	92	101	73	77	80	79	58	10
02	75	75	75	85	91	95	72	77	84	77	57	14
03	80	78	76	84	88	93	81	84	87	76	61	13
04	86	70	85	82	82	86	77	79	89	83	67	13
05	77	73	88	78	89	80	84	91	92	85	67	11
06	87	70	98	74	86	89	77	103	96	90	65	12
07	92	76	99	74	85	87	87	101	92	95	74	13
08	93	73	98	72	92	76	78	98	97	92	81	13
09	99	73	104	78	92	79	87	109	91	100	94	21
10	85	65	88	70	79	68	79	91	83	82	89	20
11	80	60	96	60	71	62	74	93	74	76	87	25
12	74	55	86	50	63	57	63	87	58	78	82	33
UE					1					2	1	
US	6	9	10	17	17	18	11	14	17	7	9	8
Total	1,090	915	1,178	1,036	1,117	1,132	1,054	1,208	1,167	1,132	971	217

HISPANIC STUDENTS

2002-2004

GRADE	Deep Creek	E. Gresham	E. Orient	Hall	Highland	Hogan Cedars	Hollydale	Kelly Creek	N. Gresham	Powell Valley	W. Gresham	Outside GBSD
K	5	18	10	37	23	36	13	19	27	12	13	2
01	3	18	7	26	27	21	7	10	19	12	6	1
02	4	17	7	25	26	20	8	11	14	7	6	1
03	4	17	7	18	22	17	8	14	15	5	4	2
04	4	13	8	18	19	16	7	10	20	8	4	3
05	3	13	9	19	18	16	6	10	22	8	3	2
06	3	15	8	18	15	13	7	7	17	7	4	3
07	4	13	9	14	13	10	5	10	16	7	2	3
08	4	13	7	9	15	6	3	10	13	6	3	2
09	6	11	5	9	16	8	5	10	10	6	4	3
10	3	6	2	9	13	9	4	6	8	4	3	2
11	2	6	4	5	8	9	6	5	7	4	1	1
12	2	6	3	3	7	9	3	5	4	6	2	2
US	1	1	2	1	2	2	3	2	1			2
Total	48	167	88	211	223	194	84	130	193	92	54	28

Average 2002-2004 students

	All	Hispanic	%
Deep Creek	1,090	48	4.4
E. Gresham	915	167	18.3
E. Orient	1,178	88	7.5
Hall	1,036	211	20.4
Highland	1,117	223	20.0
Hogan Cedars	1,132	194	17.2
Hollydale	1,054	84	8.0
Kelly Creek	1,208	130	10.8
N. Gresham	1,167	193	16.5
Powell Valley	1,132	92	8.1
W. Gresham	971	54	5.5
District	12,000	1,485	12.4

**2002-2004 Average Enrollment by MSA of Residence,
Gresham-Barlow School District 10J**

ALL STUDENTS

2002-2004

GRADE	Clear					Outside
	Creek	Damascus	McCarty	Russell	W. Orient	GBSD
K	285	89	250	337	172	11
01	213	68	214	248	124	10
02	213	75	208	238	128	14
03	219	80	222	243	123	13
04	218	86	212	244	126	13
05	232	77	213	253	129	11
06	232	87	207	266	141	12
07	231	92	224	270	145	13
08	236	93	219	262	140	13
09	232	99	244	287	145	21
10	208	85	225	243	119	20
11	188	80	212	229	124	25
12	160	74	193	215	112	33
UE	1			1		
US	41	6	32	40	19	6
Total	2,911	1,090	2,876	3,378	1,745	215

HISPANIC STUDENTS

2002-2004

GRADE	Clear					Outside
	Creek	Damascus	McCarty	Russell	W. Orient	GBSD
K	58	5	57	68	24	2
01	50	3	43	48	14	1
02	44	4	39	43	16	1
03	42	4	35	37	14	2
04	42	4	32	36	12	3
05	42	3	31	37	14	2
06	36	3	31	32	13	3
07	32	4	23	31	13	3
08	30	4	21	25	10	2
09	28	6	22	26	7	3
10	24	3	16	19	4	2
11	18	2	16	14	6	1
12	12	2	15	14	6	2
US	4	1	2	2	1	2
Total	462	48	382	433	153	28

Average 2002-2004 students

	All	Hispanic	%
Clear Creek	2,911	462	15.9
Damascus	1,090	48	4.4
McCarty	2,876	382	13.3
Russell	3,378	433	12.8
W. Orient	1,745	153	8.7
District	12,000	1478	12.3

**Births by Selected Ethnicity by Elementary School Attendance Area, 1990-2003
Gresham-Barlow School District 10J**

ESAA	All births													
	1990	1991	1992	1993	1994	1995	1996	1997	1998	1999	2000	2001	2002	2003
Deep Creek	66	61	58	43	63	54	51	43	40	50	40	28	47	51
E. Gresham	74	80	82	76	82	81	90	80	85	82	72	104	94	84
E. Orient	56	41	55	53	56	56	43	42	51	42	56	56	47	54
Hall	100	102	106	88	105	120	117	131	119	124	112	115	112	106
Highland	66	84	96	98	89	98	93	114	123	129	109	117	100	106
Hogan Cedars	48	47	58	57	57	75	70	72	106	113	108	99	120	109
Hollydale	51	61	73	57	60	67	82	80	69	95	109	94	89	105
Kelly Creek	58	71	56	63	71	56	60	70	74	73	83	77	75	100
N. Gresham	86	94	75	82	69	80	92	71	77	69	79	78	86	67
Powell Valley	55	57	62	58	53	56	50	56	66	64	60	69	70	73
W. Gresham	67	73	73	78	77	55	51	48	58	71	54	75	55	62
District	727	771	794	753	782	798	799	807	868	912	882	912	895	917

ESAA	Hispanic births													
	1990	1991	1992	1993	1994	1995	1996	1997	1998	1999	2000	2001	2002	2003
Deep Creek	1	4	2	1	1	5	3	0	2	3	2	0	0	2
E. Gresham	8	4	4	6	8	6	12	11	13	12	16	22	19	22
E. Orient	2	5	9	6	2	3	4	4	5	2	4	6	4	3
Hall	5	9	7	17	12	14	10	15	26	22	27	22	25	28
Highland	4	7	13	11	12	14	14	27	29	23	25	37	21	30
Hogan Cedars	0	2	1	2	2	2	6	9	11	15	16	18	22	27
Hollydale	0	1	1	1	3	5	4	4	5	10	15	11	13	17
Kelly Creek	0	0	3	2	7	7	4	7	3	7	12	14	13	24
N. Gresham	3	9	2	4	3	9	7	6	10	7	12	15	19	9
Powell Valley	2	6	10	9	9	9	6	12	9	10	12	18	12	15
W. Gresham	2	2	1	4	2	3	2	3	4	5	5	5	3	7
District	27	49	53	63	61	77	72	98	117	116	146	168	151	184

ESAA	Black non-Hispanic births													
	1990	1991	1992	1993	1994	1995	1996	1997	1998	1999	2000	2001	2002	2003
Deep Creek	0	1	0	0	0	1	0	0	0	0	0	0	0	0
E. Gresham	0	1	1	0	0	1	2	1	3	1	0	2	1	2
E. Orient	0	0	0	0	0	0	0	0	0	0	0	0	0	1
Hall	1	0	2	2	3	2	3	2	5	5	4	2	5	4
Highland	1	1	1	0	2	2	3	2	3	3	2	3	0	6
Hogan Cedars	0	0	0	0	2	0	2	0	0	1	1	1	1	2
Hollydale	0	0	0	0	2	0	1	0	1	2	2	3	1	5
Kelly Creek	1	0	0	2	2	0	1	0	1	1	2	0	2	1
N. Gresham	1	0	2	0	1	0	2	3	1	0	3	2	0	3
Powell Valley	0	0	1	0	1	0	0	0	2	0	1	2	0	0
W. Gresham	0	0	0	0	0	0	1	0	0	1	0	2	0	0
District	4	3	7	4	13	6	15	8	16	14	15	17	10	24

**Births by Selected Ethnicity by Middle School Attendance Area, 1990-2003
Gresham-Barlow School District 10J**

MSAA	All births													
	1990	1991	1992	1993	1994	1995	1996	1997	1998	1999	2000	2001	2002	2003
Clear Creek	176	209	216	215	200	223	233	242	253	257	259	255	247	242
McCarty	202	212	216	214	212	210	224	209	229	259	220	275	252	247
Damascus	66	61	58	43	63	54	51	43	40	50	40	28	47	51
Russell	213	230	224	209	229	232	227	257	259	261	255	261	257	279
W. Orient	70	59	80	72	78	79	64	56	87	85	108	93	92	98
District	727	771	794	753	782	798	799	807	868	912	882	912	895	917

MSAA	Hispanic births													
	1990	1991	1992	1993	1994	1995	1996	1997	1998	1999	2000	2001	2002	2003
Clear Creek	7	16	15	16	18	27	23	37	44	39	45	59	51	49
McCarty	10	8	7	12	12	12	20	21	27	29	37	47	42	57
Damascus	1	4	2	1	1	5	3	0	2	3	2	0	0	2
Russell	7	15	20	28	28	30	20	34	38	39	51	54	50	67
W. Orient	2	6	9	6	2	3	6	6	6	6	11	8	8	9
District	27	49	53	63	61	77	72	98	117	116	146	168	151	184

MSAA	Black non-Hispanic births													
	1990	1991	1992	1993	1994	1995	1996	1997	1998	1999	2000	2001	2002	2003
Clear Creek	2	1	3	0	4	2	6	5	5	3	7	8	1	13
McCarty	0	1	1	0	2	1	5	1	3	5	0	4	2	4
Damascus	0	1	0	0	0	1	0	0	0	0	0	0	0	0
Russell	2	0	3	4	6	2	4	2	8	6	7	4	7	5
W. Orient	0	0	0	0	1	0	0	0	0	0	1	1	0	2
District	4	3	7	4	13	6	15	8	16	14	15	17	10	24