

Portland State University

PDXScholar

RAIN: Journal of Appropriate Technology

RAIN

3-1-1975

RAIN: Monthly Newsletter of ECO NET

ECO-NET

Follow this and additional works at: https://pdxscholar.library.pdx.edu/rain_japt

Let us know how access to this document benefits you.

Recommended Citation

ECO-NET, "RAIN: Monthly Newsletter of ECO NET" (1975). *RAIN: Journal of Appropriate Technology*. 7. https://pdxscholar.library.pdx.edu/rain_japt/7

This Book is brought to you for free and open access. It has been accepted for inclusion in RAIN: Journal of Appropriate Technology by an authorized administrator of PDXScholar. Please contact us if we can make this document more accessible: pdxscholar@pdx.edu.

RAIN

MONTHLY NEWSLETTER OF ECO NET

VOLUME I, NUMBER 6

MARCH 1975



Usual deadline for material: 18th of each month.

ECO-NET/Energy Center/OMSI
(503) 224-9500

Charles Auch	248-5929
Linda Craig	248-5941
Dean Ivey	248-5929
Marcia Lynch	248-5920
Mary Lawrence	248-5940
Bob Phillips	248-5929
Rusty Whitney	248-5903

RAIN/EEC
(503) 229-4692, 229-4683

Anita Helle
Lee Johnson
Steve Johnson (editor)
Mary Wells (layout, design)

EEC
(503) 229-4682

Randi Krogstad
Don Stotler
Laura Williamson

Cover Photo: Ancil Nance
Typesetting: Irish Setter

THANKS TO:	Guy Faust
William Clark	Catherine Johnson
Woody Derykx	Ron Lang
Jack Eyerly	Michael Wells

RAIN is a monthly bulletin board. As stuff comes our way by phone, mail, feet, hands and mouth we make entries, abstracts, paragraphs. We emphasize environmental/energy related and communications kinds of information; and we are interested in the evolutionary possibilities of inter-disciplinary connections.

Our geographic emphasis is the Pacific Northwest, though our prejudice will be Oregon, and more specifically Portland. You can correct our bias by your feedback, sending us information on projects, exciting books, pieces, newsletters, ideas, photos, corrections.

Positions and Situations is a place for you to locate others, more or less without our editorial intervention. If you are thinking about thinking about doing something here's the place to find next steps and connections.

We have spent nearly as much time constructing our mailing list, as compiling the newsletter. It is presently composed of environmental educators, people doing energy related research, other newsletters, other centers, community organizers, governmental and private environmentally related groups and agencies.

If you have other persons you think should receive *RAIN*, drop us a note.

Why you may not be entered: We don't know about you, you are lost in brown boxes and manila envelopes, or we ran out of time and space.

You will notice initials following some entries: The person submitting the entry is found in the list of contributors.

In addition to *RAIN*, during the year we expect to publish: 1) *City Survival*, a short directory (or series) to information resources in Portland, 2) *A Directory of Environmental Information Resources in the Pacific Northwest*, 3) *How To Sheets*, guides to getting things done, like how to find your way through governmental bureaucracies, 4) *An Access Guide*, to materials at EEC/Energy Center.

Please mention *RAIN* when asking for information from individuals and groups, as it then encourages those people to keep us posted.

RAIN is sent to anyone asking for it. Although we like to know about you, it is not a requirement. If anyone would like several copies to distribute in their area, write to Steve Johnson.

RUSH (see pages 13-15) is a new section of last minute items which we'll list in detail next month.

(S.J.)



PLEASE NOTE

There are two special pull-out sections in *RAIN* this month. An on-going Roughdraft section (this month on Funding) and the first part of the Energy Environmental Center Directory (A-H). Both sections are designed to be pulled out.

CORRECTION FROM LAST MONTH:
The *Student Oceanography Newsletter* is published in Seaside (not Seattle), Or.

AGRICULTURE · FOOD

Food Co-op Project
Loop College
64 E. Lake St.
Chicago, Ill. 60601
312-269-8101

Providing information, consultation, in the areas of food coops, land use, nutrition, rural affairs, land trusts, alternative agriculture methods, farmers' markets. They publish a bi-monthly newsletter (*Food Coop Nooz*) of nationwide interest, especially for people working in food coops. The newsletter is \$3 a year, which includes a rather staggering directory of about 1,000 food coops around the country.

California Certified Organic Farmer Newspaper

9630 Churn Ck. Rd.
Redding, Ca. 96001

News on the eco-agriculture front, reports on individual farms, addresses of distributors, growers, wholesalers (includes Northwest), general organic growing practicalities. (No price mentioned?)

Rural Apprenticeship Program

Rt. 1, Box 14
Perhastin, Wn. 98847

A project of Rural Resources and Information network, attempting to introduce people who are willing to exchange their work for learning a skill with people who have land and/or a trade, who need help, and who are willing to share their knowledge with others.

A List of References for the History of Agriculture in California. Compiled by

Richard J. Orsi. From:
Agricultural History Center
University of California
Davis, Ca. 95616

Includes a preliminary list of references for the history of agriculture in the Pacific Northwest and Alaska as well. (No price mentioned.)

Abundant Life Seeds, 1975 catalog
P.O. Box 30018
Seattle, Wa. 98103
206-634-3057

This catalog, shaped like a mushroom, describes the 200 locally-grown varieties of herb, vegetable and flower seeds available, as well as other imported special seeds, all carefully selected untreated seeds. A unique service. (See also calendar.) 50¢.



The Rural Library
c/o Bart Alexander
P.O. Box 469
Toppenish, Wa. 98948

The library is mostly for on-site referral dedicated to the re-establishment of a viable rural society. The main collection is 4,500 books on agriculture and rural living, which were published from the 1840s to 1930s. It is a small volunteer service—and such a good idea; perhaps where bookmobiles fail to reach. They would appreciate contributions of time, money, books, ideas.

Seeds of Woody Plants of the U.S.

From:
Superintendent of Documents
Government Printing Office
Washington, D.C.

This is a revision of the long out of print "Woody Plant Seed Manual." It is authoritative, massive; for learning about seed propagation, how-to, or education. \$13.60. Order No. 0100-02902.

Living Systems Institute
Marylhurst Education Center
Marylhurst, Or. 97036
503-636-8141

Director: Chris Herron.

A small group of people dedicated to the practice and teaching of energy-efficient life support: organic gardening, sensible carpentry, intermediate technology conversion, natural health and healing. Course offering: home gardening, a world of sense; on the principles and practices of food production by organic, ecologically sound, money saving methods.

Northwest Trucking—Trade Network
c/o Jaybird
P.O. Box 554
Republic, Wa. 99166

A group—with regional representatives—attempting to establish chains of transportation of food and goods between small (often organic) farmers, truckers and food coops, conspiracies, wholesalers. . . .

Center for Rural Affairs
P.O. Box 405
Walthill, Nebraska 68067

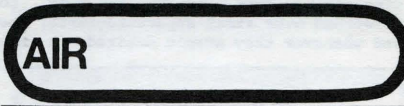
Though this 4-page newsletter has a focus on Nebraska, there's also national news affecting the small farmers of America.

"Our system of agriculture in the United States," claimed Steffen, "just isn't a self-renewing process like it used to be." Agriculture, the way it "used to be," created more energy than it used. Plants produced more energy than the amount of energy it took to grow them. The plant sustained the farmer, who used that energy he gained from the plant to produce the next year's crop by his hand labor. There was enough excess energy and minerals in the plant's remains to nourish the next year's crop. This system, where the energy used to grow the plant comes from the plant, is self-perpetuating. But when you use an outside energy source (oil), a source that cannot be renewed by the farming process, you are talking about a type of agriculture that is not self-perpetuating, that cannot go on for centuries the way a system of agriculture that is not dependent on oil can.

Community Garden News
Suite G17, American City Bldg.
Columbia, Md. 21044

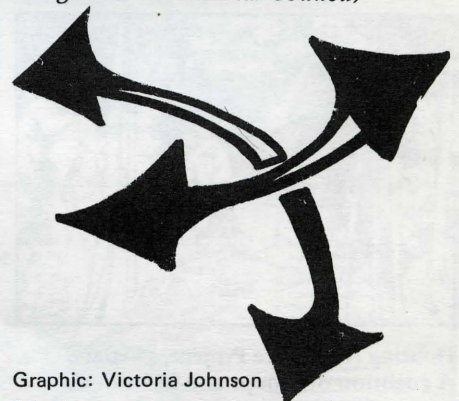
Sample copy \$1.50.

See also: Energy, Education, Architecture, Positions, Rush



Harvard atmospheric scientists have recently theorized that the freon gases that pressurized aerosol cans release are destroying the ozone layer of the earth's atmosphere. Ozone, a sparse gas of the upper atmosphere, shields us from the harmful effects of ultraviolet radiation. It also affects weather conditions, but how and to what degree is presently unknown. While it will be at least 10 years before this theory can be proven or disproven, we will be taking tremendously incalculable risks by releasing four billion pounds of these gases into the atmosphere.

Anyone sharing concerns over these risks is asked to participate in a boycott of aerosol cans and to start a chain letter to five friends asking them to follow suit. (Oregon Environmental Council)



Graphic: Victoria Johnson
Wind and Windspinners. Michael Hackleman, David W. House
Earthmind
Josel-Saugus, California 91350
805-251-3053

A good overall introduction to wind power engineering, small scale, and then a full description of the S-rotor aeroturbine, which, though not as "powerful," is one of the easier, cheaper forms of wind turbine. \$7.50. (Ask for publications list, too.)

1974 ESTIMATED EMISSIONS								
LANE COUNTY AS OF DECEMBER 4, 1974								
TONS PER YEAR								
CATEGORY	TOTAL ORGANICS	TOTAL PARTICULATES	NOx	SOx	CO	OTHERS	TOTAL	PERCENT
Wood Products	1,750	9,011	5,938	8	1,242	NG*	17,949	8.9%
Pulp & Paper	398	1,603	4,085	869	176	114	7,245	3.5%
Other Industry	4,194	1,127	850	902	786	NG*	7,859	3.8%
Municipal Power Generation	524	1,214	1,960	NG*	3,290	NG*	6,988	3.4%
TOTAL INDUSTRIAL SOURCES	6,866	12,955	12,833	1,779	5,494	114	40,041	19.6%
Transportation	19,261	1,373	10,018	1,134	96,548	NG*	128,334	62.7%
Home Space Heating	55	143	689	32	14	NG*	1,223	.6%
Open Burning/Incineration	808	431	162	27	2,290	NG*	3,718	1.8%
TOTAL INDIVIDUAL SOURCES	20,124	1,947	10,869	1,483	98,852	NG*	133,275	65.1%
Orchard Prunings	44	37	4	NG*	132	NG*	217	NG*
Slash Burning	3,090	2,320	515	NG*	16,500	NG*	22,425	11.0%
Forest Fires	521	391	87	NG*	2,780	NG*	3,779	2.0%
Field Burning	439	585	73	NG*	3,690	NG*	4,787	2.3%
TOTAL SPECIAL SOURCES	4,094	3,333	679	NG*	23,102	NG*	31,208	15.3%
GRAND TOTAL LANE COUNTY	31,084	18,235	24,381	3,262	127,448	114	204,524	100.0%

NG* - Negligible

ARCHITECTURE

Assimilation

Portland Bureau of Planning
424 S.W. Main St.
Portland, Or. 97204

Monthly 2-page sheets, descriptions of innovative urban environmental design projects from around the country.

Adobe Craft

18322 Carlwyn Drive
Castro Valley, Ca. 94546

They teach the art, technology and use of adobe in buildings through the U. of Cal. extension (55 Laguna, San Francisco, Ca.). Have published an introduction to the art. \$5.50 plus 18¢ postage.



Housing Assistance Project, Portland

A coalition of groups and individuals attempting to create a multi-purpose service center to provide persons with rental information, referral to housing assistance programs, to promote improved quality of housing, to compile and disseminate data concerning housing needs, inform newly-moved families of community services available, coordinate tool banks and volunteer handy man corps, seminars on house maintenance, referral concerning landlord tenant laws. (Because the group is just forming, for contact call Steve or Lee Johnson at the EEC for referral.)

International Directory of Behavior and Design Research, 1974.

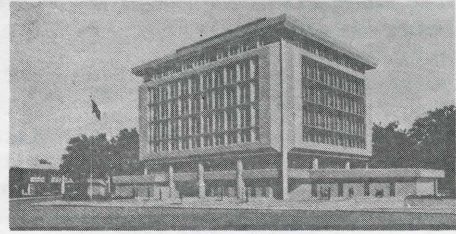
Association for the Study of Man & Environment
P.O. Box 57
Orangeburg, New York 10962

This directory of individuals involved in a shifting area of concern: effects of man-made environments on social relations and individual psychology, is an important definition of an academic area as well as a linkage for people involved in architecture, planning, aesthetics and environment. The range of information given for each person spells out pretty well their range of concerns. \$12 to non-subscribers and institutions.

See also: Community, Rush

Energy Conservation

is the goal of a projected Federal Office Building in Manchester, New Hampshire. Practically every square inch of the seven story building will be part of a working laboratory to determine the energy conserving efficiency of design and equipment. Dubin, Mendel, and Bloom, engineering consultants to the General Services Administration, expect to save up to 50% of the average energy expenditure for a "normal" seven story office building.



Federal Office Building for Manchester, N. H.

This saving will be achieved through careful site analysis, building orientation, meteorological data, and scrutiny of the glass to wall surface ratio. As a result of this study, no windows will be on the north wall, and those on the other sides will be operable and limited to 15% of the surface area. In addition, external, vertical louvers will control light and heat load during the day, and will be closed at night to cut heat radiation. The ventilation and heating system will be modular and will have the capacity to automatically adjust for seasonal variations. By careful analysis of working stations, lighting needs were reduced by 50%, and wherever possible, plug-in luminaires will be used.

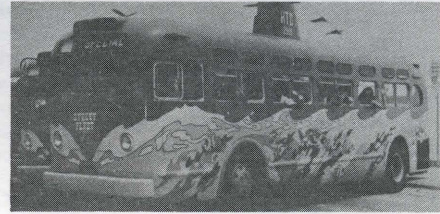
The only radical departure from "off the shelf" hardware will be four, 15,000 sq. ft. solar collectors on the roof which will supply 30% of the buildings energy needs. Excluding the collectors, construction costs are expected to be \$39 a sq. ft., not outside the norm for a comparable building. Using a common sense, energy budget approach, the designers of this building hope to demonstrate that energy consumption can be reduced through the usage of existing techniques and materials, and can be duplicated in any of the seven climatic zones in the United States.

Low Interest Loans

are being offered by Louisville's First National Bank to small businessmen in order to refurbish, restore, and/or recycle old structures in that city's inner core. The Bank has established a \$1 million fund from which loans up to \$50,000 may be used in any area of the core, or where neighborhood associations exist. Loans can be secured at preferred interest rates, 25% less than typical business improvement loans. First National estimates that the hundreds of 19th century structures available for recycling are usually so sound that \$50,000 will be adequate for Class A improvements.

Making Waves

at California beaches is the intention of a summer "street" fleet in Los Angeles. The fleet, which consists of ten buses, each with Peter Max-like graphics, provide easy beach access to hot Californians. The Southern California Rail District proclaims the fleet to be an enormous success, especially with inner city residents, and sees the fleet as one more way to increase ridership.



Lagnaipe

The problem of using outdoor pedestrian spaces during inclement weather seems to have been solved in Kansas City. Umbrellas that appear to be right out of Brodningag dot the landscape of "Village Square" in Crown Center, that city's "city-within-a-city". Huge parasols 30 feet in diameter make the green spots more useable by providing shelter from wind, sun and rain. Consisting of vinyl-coated polyester that has been stretched over steel superstructures, the umbrellas are also mobile so that they can be moved whenever they aren't desired, or relocated to another spot.

From: Assimilation

ART

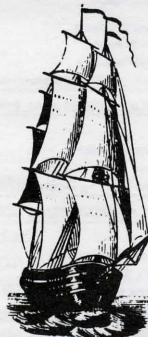


Image Gallery

242 S.W. Ankeny St.
Portland, Or. 97204

Current exhibit of shipyard years in Portland by Arthur Rungquist. Comes highly recommended.

Video Tape Theater Gallery

The 24th Avenue Gallery in Portland (1818 N.W. 24th) is now making available the viewing of video tapes, mostly of Pacific N.W., collected by Larry Gale. Viewing hours: noon to 5 pm.

Winter Gallery

408 S.W. 2nd, Suite 320
Portland, Or. 97204

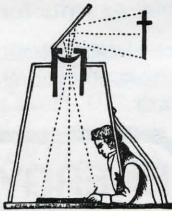
Wishing you well new space. (Any ideas on what's happening, and is it happening in other parts of the country. In Portland there's been an explosion of galleries, taverns [especially ones with mixed media space availability], bookstores, restaurants and newsletters and newspapers.) Currently showing An American Field Trip by A.S. Tane.

AUDIO VISUAL

Planetary Culture and the New Image of Man

Tapes available from the August, 1974, conference hosted by the Lindisfree Assoc., including E.F. Schumacher, Stewart Brand, Carl Sagan, Paolo Soleri . . . \$6.50 per tape. For details write to:

Lindisfree
50 Fish Cove Rd.
Southampton, N.Y. 11968



CAMERA OBSCURA

Ore Plan

45-minute slide show. Low cost community recycling system. Contact:

Richard Duncan, Systems Science,
Portland State University
Portland, Or. 97207

Open Circuit TV

Box 5463
Seattle, Wn. 98105

Formally North Community Television Project, has just published its annual Seattle Video Exchange Directory. It is a listing of individuals, groups, classes, equipment outlets and repair; information on Seattle cable TV, and some national resources. All in this funny 4x6 format. Just get a file box and you have a Seattle Video file cabinet. \$1.00.

See also: Art, Education, Information, Rush

COMMUNITY

Science in the Neighborhood

Community Technology Inc.
1520 New Hampshire Ave., N.W.
Washington, D.C. 20036

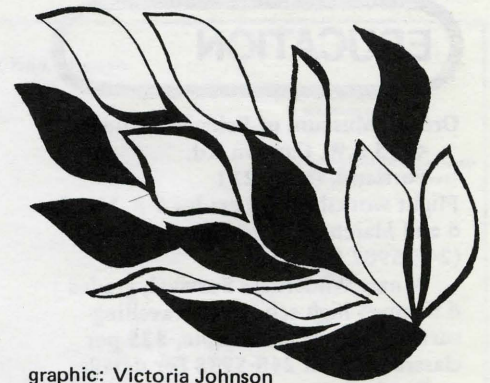
It is such a simple and right idea, flowing into projects, that you hardly need to get a copy of their newsletter to understand. Classes, sharing, tool exchanges, neighborhood newsletters (remember the bright kids with purple mimeo newsletters?); small is beautiful; science in the hands of your neighbors; like an.OMSI and community education center where people learn to be self-sufficient and less demanding on either the larger social or environmental systems.

News Communities, a program of the Dept. of Housing and Urban Development, designed to aid in the development of ecologically sound communities, has been cut back in funding. The 15 new towns now in various stages of completion will have continued limited support, but no new towns will be considered. For information and comments write to:

Community Development Corp.
HUD
451 7th St., S.W.
Washington, D.C. 20410

Downtown Portland Power Structure
In the *Willamette Week* (Jan. 27, 1974 issue). A nifty 1-1/2 page diagram: the structure of planners, owners, "movers and shakers." Duplication of this for other cities would be illuminating. (320 S.W. Stark, Portland, Or. 97204)

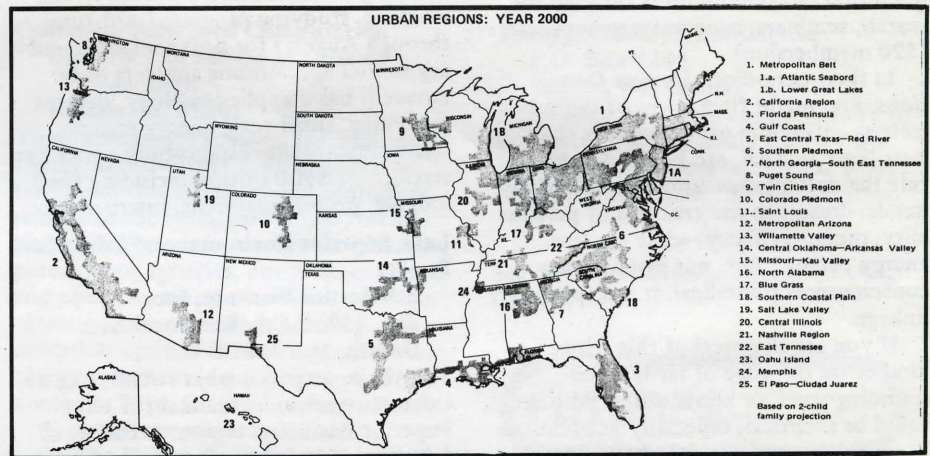
Also in *Willamette Week* (Feb. 3 issue) is a useful diagram of safety/accident potential of Portland parks, playgrounds, school yards.



graphic: Victoria Johnson

Dept. of Computer Science, University of Oregon, has announced its 1975 summer program, consisting of workshops for general computer science; low prerequisite courses and more advanced courses. Write for information:

David Moursand
Dept. of Computer Science
University of Oregon
Eugene, Or. 97403
686-4394



COMPUTERS

Tom Swift Terminal of Convivial Cybernetic Device

LGC Engineering
1807 Delaware St.
Berkeley, Ca. 94703

Correction from last month's entry (cost is 50¢). Design for an adaptable, modular computer terminal, as much a tool as a toy, or toy as a tool. In its minimum form, called the basic system, it is a box of electronics with a keyboard. It connects to a telephone coupler and to the antenna terminals of a home TV. The text is displayed on the TV screen; lines are 32 characters long, and 16 lines fill a screen. It operates at 30 characters per second. Basic plans are 50¢.

Computers in the Elementary School: a course for teachers. A publication of the curriculum group of the Oregon Council for Computer Education. \$1.50.

Dept. of Computer Science
University of Oregon
Eugene, Or. 97403

A course outline and bibliography for use in planned elementary school teacher courses to be taught in winter 1975 in selected schools in Oregon.

The depression and recreation. The doom boom, *Time* magazine called it. Apparently in reaction to inflation fastly becoming depression, Americans are spending money.

Disneyland had to close its gates; Broadway ticket sales are running \$6 million ahead of last year's level; sales of Steinway pianos have hit a historic high; ski resorts show marked increases; and travel (not to Europe, but the Caribbean) is on the upswing.

Flight workshop for grades 4-8, March 6 and March 13, 12 noon to 2 p.m. (248-5907 for details)

Winter Wilderness Survival, grades 6 through high school. A travelling survival lecture is available, \$25 per classroom. Call 248-5938 for details.

Bottle Collector's Exhibit, March 8 to 23.

Wool Show, March 29 to April 6.

Teacher in-service activities: March 1 and 15, Alternative Energy Sources; March 8, Indians of the NW Coast Tribes. (Call 248-5937 for information.)

The Human Dimensions Institute
4380 Main St.
Buffalo, N.Y. 14226

A research group dedicated to the study of human dimensions, expanding the definition of consciousness through research, seminars, experience groups, etc. (\$20 membership)

In their periodical, *Human Dimensions*, you might find many of the subjects as covered in other journals (like *East West Journal*, etc.): will dolphins rule the universe?; acupuncture, healing hands; dreams in the creation of personality; metapsychiatry; what is a low energy person? But, not just another consciousness periodical, it is a special linkage.

If you are skeptical of this fringe, kind of on the edge of far-fetched-sounding stuff, or know others who are timid or skeptical, especially academically so, this magazine might help. \$5/yr.

State University of Oregon
Specialist
942 Lancaster Drive, N.E.
Salem, Or. 97310

Alternative Energy and Agriculture.
Goddard College Summer Program;
June 2, Aug. 22. With Karl Hess (Community Technology); Steve Baer (Zome-works); John, Nancy Todd (New Alchemy Institute). Directed by Murray Bookchin. Write to:

D. Chodorkoff
Social Ecology Program
Goddard College
Plainfield, Vt. 05663

Greenpeace Experimental Farm
Denman Island

British Columbia, Canada VOR Ito
Offering this summer a 10-week living, working, studying program (mid-June through August) for post senior secondary school age. Among subjects to be covered: basic applied ecology, organic gardening, small scale energy sources, microclimatology, establishing a weather station . . . \$900 tuition including food, lodging, project materials, instruction.

Lake Superior Environmental Education Project

Scholastica Institute, Inc.
Rm. 157, C.C.S. Kenwood Ave.
Duluth, Mn. 55811

They have prepared what sounds like an exhaustive resource manual for Lake Superior Basin and region. A culling of 4,000 print and video items.

When they walk, above them hovers another, and maybe even another set of eyes. A map vision allows one to see around corners, around mountains, through trees.

This is a good introductory guide: general cartography, symbols. For elementary and secondary teachers. (See *Rain #1* for index to some maps available—or write for reprint.

See also: Agriculture, Energy, Computers, Recycling, Outdoor Education, Rush

ENERGY

Selected Information Resources on Energy

National Referral Center
Science and Technology Division
Library of Congress
Washington, D.C. 20540

A handy guide to agencies and other information-gathering associations.
Order #sl 73-7.

ECOTOPE GROUP

BOX 8888 UNIV STATION
SEATTLE, WA. 98108

ABSTRACT

Title: Process Feasibility Study: The Economic Viability of Dairy Cow Manure as the Solid Substratum for Anaerobic Digestion. Washington. 15 January 1975.

Agreement: "88 Administration Grant Number 7" between State of Washington Department of Ecology and Institutional Industries - Department of Social and Health Services and "5025-888-1199" between Institutional Industries and Ecotope Group.

A feasibility study has been completed. Manure from 150 cattle units (one cattle unit = 1000 pound animal daily operation) will be scraped from feeding shed and deposited into the digester to produce a combustible gas and ammoniated nitrogen fertilizer. Digester tanks will be an existing product which can be purchased at a reasonable cost. Digestion technique will utilize high rate anaerobic digestion. Net production (after heating needed) of bio-gas (1000 cu ft) was estimated to be 1500 to 3500 cu. ft./day in cold and warm seasons respectively. Bio-gas will be used to replace 82 fuel oil. 20% replacement savings estimated to be 14488.00/year. Fertilizer savings are based on transformation of approximately bound nitrogen to the ammoniated form. This was estimated to be 8 tons/year. Bio savings of 16144.00/year to replace ammoniated nitrogen fertilizer - net annual cost of system was estimated to be \$26,100.00. Production of manure of product above the amortized cost per cattle unit is near the break-even point for investment payback from bio-gas savings alone.

The first 100 copies of this report were released for review by the State of Washington Department of Ecology and other state and federal agencies and individuals. A second printing will be available in 16-18 months. \$5.00 of which will go toward additional research on energy conservation and renewable sources of energy.

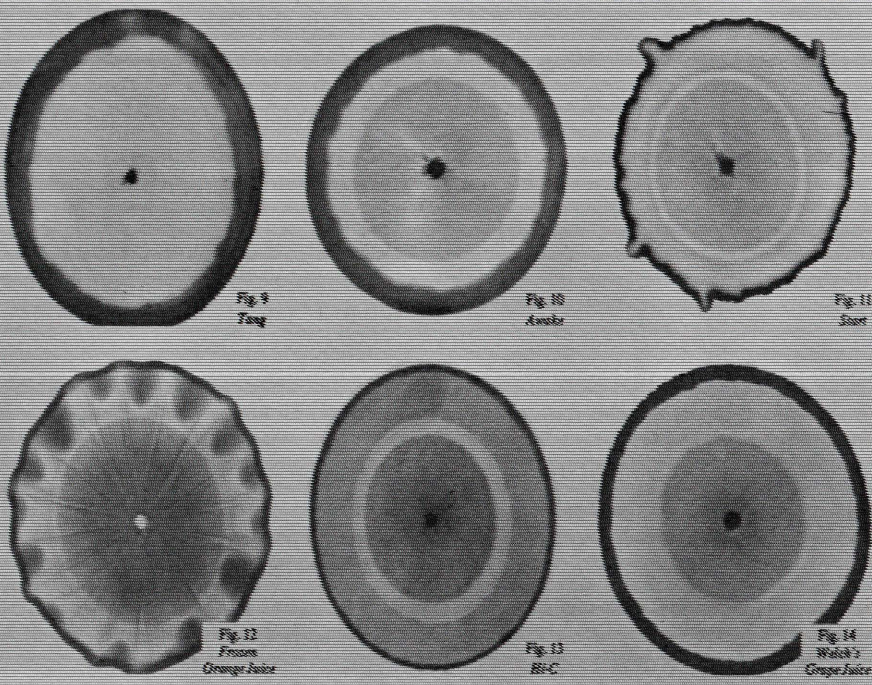


Fig. 9
Tong

Fig. 10
Aster

Fig. 11
Sart

Fig. 12
Froons
Orange Juice

Fig. 13
H-C

Fig. 14
Walsh's
Orange Juice

From: *Further Research into a Chromatography Technique for Vitamin Analysis*, M. Justa Smith, Human Dimensions Institute.

New England Solar Energy Association
Box 121

Townshend, Vt. 05353

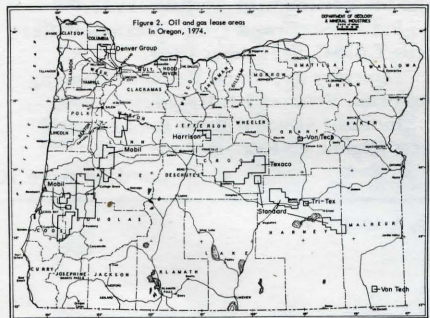
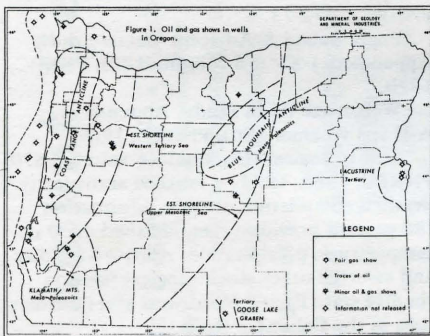
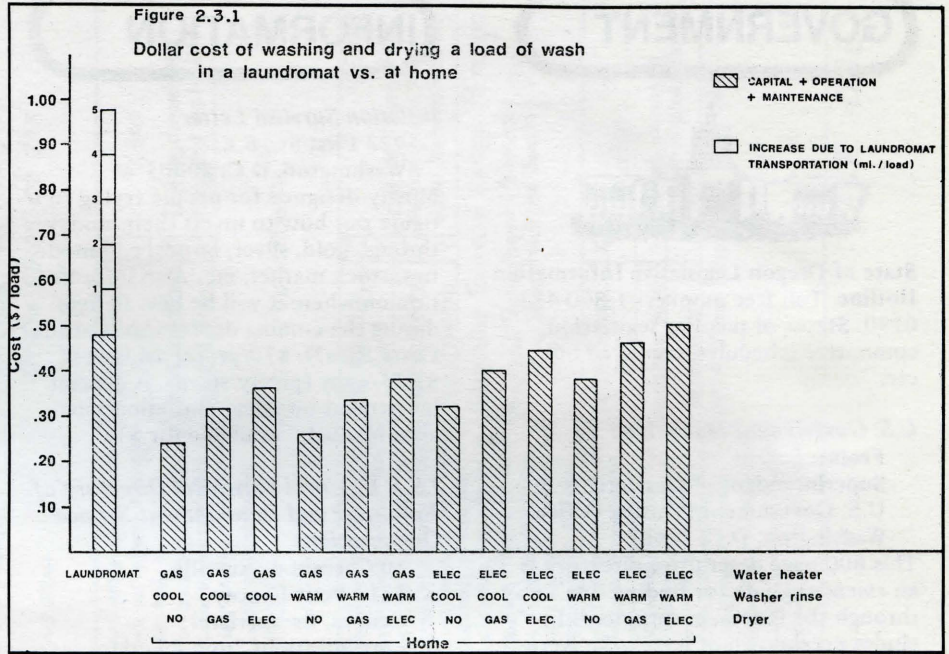
Formed to further solar and related arts sciences and technologies, with concern for the ecological, social and economic fabric of the region. \$5/yr. dues. A chockful of solar oriented items newsletter. (LJ)

Inform

25 Broad Street
New York, N.Y. 10004
212-425-3550

A non-profit independent research group which studies the impact of corporations on society in such areas as environmental protection, occupational safety and health, consumerism. Currently they are doing a survey of U.S. corporations to determine what efforts are being made to examine energy sources and technologies, using a base of 100-200 corporations. Write for details on other published reports, newsletter.

The nation's supply of natural gas, which provides about 50% of industry's energy needs, is running short. U.S. production has peaked and the country is beginning to live partly off its reserves. (And Canada has curtailed exports of gas to the U.S.) (*Time Magazine*)



From: *Orebin*

**Center for Advanced Computation
University of Illinois at Urbana-Champaign
Urbana, Ill. 61801**

These studies are some of the best total energy input/output studies available. Computations of energy use options as related to the economic employment picture in America. A must for planners, government agencies, environmentalists, and opens up many possibilities for educators—on how to relate personal consumption options to the environmental/energy system at large. Free, in limited numbers. Write for publications list.

Especially recommended:

- 1) The Dollar, Energy and Employment Impacts of Air, Rail and Automobile Passenger Transportation, CAC #96.
- 2) Transferring from Urban Cars to Buses: the Energy and Employment Impacts, CAC #98.
- 3) The Dollar, Energy and Employment Impacts of Certain Consumer Options, CAC #97.
- 4) Energy and the Regional Planner, CAC #116.

**Energy Action of Washington
P.O. Box 4244
Seattle, Wa. 98104**

Organizing, research, coordination and advocacy group recently formed. Especially an emphasis on nuclear power. Newsletter available. \$3 membership.

See also: Agriculture, Education, Air, Groups/Assn. *Ruch*

FUTURES

TABLE 1

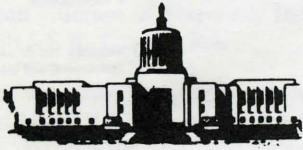
CONDUCT OF RESEARCH AND DEVELOPMENT BY MAJOR DEPARTMENTS AND AGENCIES
(in millions of dollars)

	Obligations		
	1974 actual	1975 estimate	1976 estimate
Defense -- military functions	8,396	8,833	10,608
National Aeronautics & Space Administration	3,024	3,327	3,526
Energy Research & Development Admin.	1,475	1,893	2,346
Health, Education and Welfare	2,286	2,092	2,285
National Science Foundation	556	619	680
Agriculture	384	428	468
Transportation	370	368	402
Interior	198	303	315
Environmental Protection Agency	177	287	300
Commerce	181	211	230
Veterans Administration	87	102	102
Nuclear Regulatory Commission	44	59	96
Housing and Urban Development	65	58	65
Justice	37	67	45
All other	127	135	134
Total	17,409	18,780	21,602
Total Conduct of Research	7,163	7,545	8,256
Total Conduct of Development	10,246	11,235	13,346
Total R&D	17,409	18,780	21,602

"Utilities presently are spending an average \$1.87 per million BTUs for fuel," Dr. Clinton Kemp (Intertechnology Group of Virginia) recently remarked. "Poplars could be planted, harvested, chipped into a form suitable for burning, delivered to power plants, at a cost of \$1.30 per million BTUs. A million acres of poplars could provide infinitely renewable non-polluting energy for all of northern New England.

The model American male spends more than 1,500 hours per year on his car, driving or sitting in it, parking or searching for it, earning enough to pay for the vehicle, etc. In terms of life-time invested, the average American attains four miles an hour. In countries without any transport industry, people walk at this rate wherever they want to go. (*Ivan Illich*)

GOVERNMENT



State of Oregon Legislative Information Hotline. Toll free number: 1-800-452-0290. Status of pending legislation, committee schedules, copies of bills, etc.

U.S. Government Manual. \$5.75

From:
 Superintendent of Documents
 U.S. Government Printing Office
 Washington, D.C. 20402

This 800-page descriptive directory is an essential guide for finding one's way through the federal government. Includes breakdown of levels of government to individuals in charge of specific programs. (Does not include Congressional breakdown.) Maybe this should/could be used as a real time introduction to government, social studies.

See also: Education

GRANTS

SEE PAGE 9

GROUPS/ASSNS

Citizens Association for Sound Energy
 2125 W. Clarendon Drive
 Dallas, Texas 75208
 817-265-8556

Energy consciousness, conservation and legislation, primarily for Texas. Free newsletter.

Coalition Against Strip Mining
 324 C St., S.E.
 Washington, D.C. 20003

Beverage Container Control Coalition
 4534-1/2 University Way, N.E.
 Seattle, Wn. 98105
 206-632-6157 or 634-2186

Consumer-Business Assn., Inc.
 428 Park Ave., Rm. 200
 Idaho Falls, Id. 83401

INFORMATION

Inflation Survival Letter

422 First St., S.E.
 Washington, D.C. 20003

Mostly designed for people trying to figure out how to invest their money through gold, silver, bonds, commodities, stock market, etc. Also information on where it will be best to live during the coming depression (Canada? Costa Rica?). \$30/yr. for 26 issues. \$1.25/copy (pretty steep). A general investment booklet, "Inflation Survival Manual," available for \$1.

I.S.V.C. World Statistical Directory of Volunteer and Development Service Organizations

10 Chemin de Surville
 1213 Petit Lancy
 Geneva, Switzerland

400 organizations from 80 countries, operating in 160 countries. (Cost is 8 Swiss francs, and I don't know the equivalency.)

Commission for Advancement of Public Interest Organizations

1875 Connecticut Ave., N.W.,
 Suite 1013
 Washington, D.C. 20009
 202-462-0505

In general a clearinghouse on public interest groups with a massive national directory of over 2,000 groups (still in rough draft—write for details). The directory has a unique indexing system which might be applicable to other information indexing systems.

A current concern is establishing coalition of groups interested in the advancement of clean drinking water.

Also ongoing work toward setting up a national common information base for Public Interest groups.

Register of Faculty Professional Interests.

Office of Scientific and Scholarly Research
 University of Oregon
 Eugene, Or. 97403

Compiled by ERIC Clearinghouse on Educational Management. This is a partial listing (400 members) of the research teaching and service interests of University of Oregon faculty members, designed in part to create communication among faculty members and allowing an access point for the community. The entries include the availability of the faculty members (e.g., will tutor, available for outside consultation, etc.)

Pacific N.W. River Basins Commission

1 Columbia River
 P.O. Box 908
 Vancouver, Wn. 98660

Extensive reports, studies available. Some of the most complete resource inventory information.

Columbia-North Pacific Framework Study, Appendices I-XVI (20 volumes \$80), PNRBC, 1972-73.

Puget Sound & Adjacent Waters Study, Appendices I-XV (18 volumes \$80), PNRBC, 1970.

Willamette Basin Study, Appendices A-M (13 volumes \$80), PNRBC, 1969.

Climatological Handbook (6 volumes \$30) PNRBC, 1968, 1972—a valuable statistically detailed compilation of basic information (80 percent previously unpublished data) on temperature, precipitation, relative humidity and assorted other climatological facts on the five-state Pacific Northwest and Canadian data in the Columbia Basin.

Sources of Information on Nuclear Power and the Environment, PNRBC, 1973.

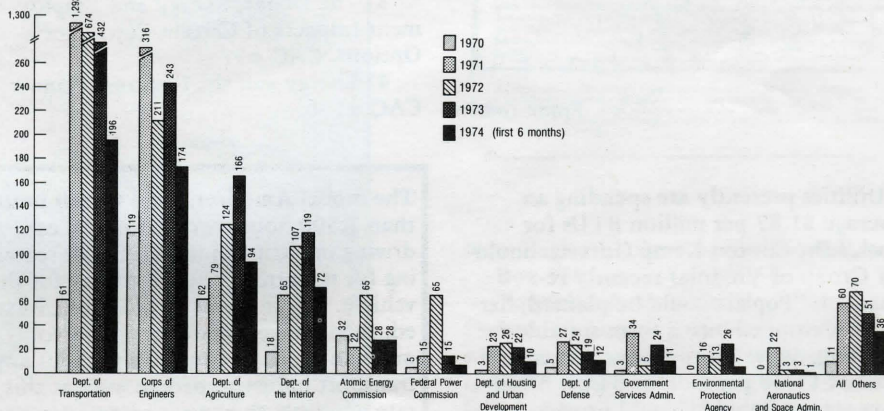
Pacific Northwest Daily Streamflow Records, CBIAC, September 1969.

Directory of Natural Resource Planning Agencies, Volumes I & II, January 1973.

Index of Selected Maps, Pacific Northwest Region, PNRBC, October 1972.

Continued on page 10

Environmental Impact Statements Filed Annually, by Agency, to July 1, 1974



From: Environmental Quality Council 1974 Report

Energy Environment Center Directory

Codes used:

1. **SASE** means "send a self-addressed, stamped business size envelope".
2. **EP** means "mentioned in the ENERGY PRIMER, Portola Institute ... \$4.50 from Whole Earth Truck Store, 558 Santa Cruz Ave., Menlo Park, Calif. 94025"
3. **WE** means "Whole Earth Epilog ... \$4.00... same address."

Those of you whose "budget-funding" section is blank or incomplete, please send in that information. It is very helpful to others trying to persuade schools, businesses, government agencies and foundations to financially support the establishment of new centers.

By the summer of 1975 the RAIN CATALOG, a Pacific Northwest "Part-of-the-Earth" guidebook, will be out. It will include this directory with any corrections, additions, and suggestions you wish to make to increase its usefulness as a national directory. Let's keep in touch.

Lee Johnson

Special thanks for their prompt and complete information to: Jim Bohlen, Don Blanchard, Bob Daley, Tom Lang, Jack Park, Ernie Robertson, Sim Van der Ryn

⊗ ← The "no copyright" symbol. This may be reproduced by any method you wish, by permission of the compiler.

NAME-ADDRESS
 ○ CONTACT PERSON
 ○ PHONE

ACTIVITIES
 ○ current \$
 ○ planned

ACTIVITIES CHECKLIST
 PUBLICATIONS (below)

CURRENT BUDGET
FUNDING SOURCES

<p>ACCESS: Built Experiments in Resource-Conserving Environments School of Architecture Univ. of Wisconsin-Milw. Milwaukee, WISC. 53201 John Schade 414-963-5339 or 944-4134</p>	<p>energy-saving rehabilitation of old homes user-built intermediate technologies...reflective insulating shutters, rooftop solar water heaters, greenhouses, windmills; energy conservation & solar energy legislation</p>	<p>networking <input checked="" type="checkbox"/> research and development <input checked="" type="checkbox"/> classes-workshops <input checked="" type="checkbox"/> construction <input checked="" type="checkbox"/></p>	<p>budget? EP tuition, donated and scrounged materials Access Work Manual \$2.00 "Legislation for Energy + Resource Conservation"... SASE "The Economics of Energy Conservation"... SASE</p>	<p>Alternative Energy Center 120 Oak Avenue Ithaca, NY 14850 Gary Kah 607-273-0345</p>	<p>gathers + disseminates info on natural energy sources conducts seminars on solar, wind, methane, low-energy architecture builds demonstration projects</p>	<p>networking <input checked="" type="checkbox"/> R+D <input type="checkbox"/> classes-workshops <input checked="" type="checkbox"/> construction <input checked="" type="checkbox"/></p>	<p>\$1,300 tuition, donations, recycled materials Publications?</p>
<p>AERO: Alternative Energy Research Org. Northern Plains Resources Council, 421 Stapleton Bldg. Billings, MONT 59101 Kye Cochran 406-248-1154</p>	<p>gathers + disseminates info on solar, wind and methane energy systems, puts people with similar interests in contact with each other, sets up public demonstration of renewable energy systems lobbies for renewable energy incentive legislation</p>	<p>networking <input checked="" type="checkbox"/> R+D <input type="checkbox"/> classes-workshops <input type="checkbox"/> construction <input checked="" type="checkbox"/></p>	<p>budget? memberships, donations SUN-TIMES monthly newsletter with membership... \$10.00</p>	<p>ASE: Alternative Sources of Energy newsletter Rt 2, Box 90A, Milaca, MINN. 56353 (Marier) or 928 2nd St. N.W., Roanoke, VA. 24016 (Eccli) Don + Abby Marier 612-983-6892 Sandy + Eugene Eccli 703-344-8412</p>	<p>the humane technology newsletter which works as a network for idea exchange using Interest Questionnaire for matching those of similar interests, maintains a lending library of hard-to-find information many specific solar, wind architecture projects</p>	<p>networking <input checked="" type="checkbox"/> R+D <input checked="" type="checkbox"/> classes-workshops <input checked="" type="checkbox"/> construction <input checked="" type="checkbox"/></p>	<p>WE, EP lending library fees, subscriptions, slide-show lectures, teaching Alternative Sources of Energy... \$5 per yr. Practical Technology + Philosophy for a Decentralized Society... \$4.00</p>
<p>An Alternative Community 147 W. 13th Avenue Vancouver, BC, CANADA contact person? phone?</p>	<p>self-sustaining alternative community of 5000, renewable energy, non-sexism, cooperatives, humane technology, decentralization</p>	<p>networking <input checked="" type="checkbox"/> R+D <input type="checkbox"/> workshops-classes <input checked="" type="checkbox"/> construction <input checked="" type="checkbox"/></p>	<p>budget?</p>	<p>Alternative Technology Information Project (ATIP) UMC Room 331a-c Univ. of Colorado Boulder, COLO 80302 Marc Saxe 303-443-2211 x 6659</p>	<p>collects, organizes and disseminates information on technologically feasible alternatives to present systems of food production, energy production/consumption, waste treatment, housing + transportation modes alternative technology classes community research projects technical advice + assistance</p>	<p>networking <input checked="" type="checkbox"/> R+D <input type="checkbox"/> workshops-classes <input checked="" type="checkbox"/> construction <input type="checkbox"/></p>	<p>tuition, university support, recycled materials ATIP User's Manual... SASE</p>

HOW MUCH DO YOU REALLY NEED?

LEARNING TO DO MORE WITH LESS

<p>Apocalypse Reconstruction Bridge House 5265 N.E. 73rd St. Portland, OR 97218</p> <p>Hank Patton</p> <p>503-254-4586</p>	<p>o beekeeping, cheese, yogurt cultivation, beneficial insect husbandry, food preservation, preparation, seed & seedling production, greenhouse construction & operation, dairy systems, carrier pigeon communication, the "square meal" or protein-standard "Q"</p>	<table border="1"> <tr><td>networking</td><td>✓</td></tr> <tr><td>R+D</td><td>✓</td></tr> <tr><td>workshops, classes</td><td>✓</td></tr> <tr><td>construction</td><td>✓</td></tr> </table> <p>tuition, donations, skronkery, barter</p> <p>o write for their brochure . . . SASE</p>	networking	✓	R+D	✓	workshops, classes	✓	construction	✓	<p>Center for Advanced Computation Univ. of Illinois at Urbana Urbana, ILL 61801</p> <p>Bruce M. Hannon Christine Barbur - Energy Research Group Documentation Librarian 217-333-6369</p>	<p>o studies of the energy efficiency of home laundries vs. laundromats, rail vs. truck transport; employment & public service utility provided by Corps of Engineers projects compared to use of same dollars & resources elsewhere</p>	<table border="1"> <tr><td>networking</td><td>✓</td></tr> <tr><td>R+D</td><td>✓</td></tr> <tr><td>classes, workshops</td><td>✓</td></tr> <tr><td>construction</td><td></td></tr> </table> <p>budget? tuition, grants</p> <p>Write for their publication list</p>	networking	✓	R+D	✓	classes, workshops	✓	construction	
networking	✓																				
R+D	✓																				
workshops, classes	✓																				
construction	✓																				
networking	✓																				
R+D	✓																				
classes, workshops	✓																				
construction																					
<p>Applied Environmental Studies The Evergreen St. College Olympia, WASH 98505</p> <p>Oscar Soule Carolyn Dubbs Russ Lidman</p> <p>206-866-6380</p>	<p>o 50 students and three faculty working in the areas of solid waste disposal, land-use surveys, and regional planning under contract to and financed by the public agencies or private organizations served.</p>	<table border="1"> <tr><td>networking</td><td>✓</td></tr> <tr><td>R+D</td><td>✓</td></tr> <tr><td>workshops, classes</td><td>✓</td></tr> <tr><td>construction</td><td>✓</td></tr> </table> <p>budget? tuition, college supported, contract</p> <p>o reports covering contracted study areas may be available . . . send for their publication list.</p>	networking	✓	R+D	✓	workshops, classes	✓	construction	✓	<p>Center for Urban Education 0245 S.W. Bancroft Portland, OR 97201</p> <p>Steve Schneider Kent Layden John Volkman Rick Paulson 503-224-1144</p>	<p>o attempts to engage city dwellers in involvement-learning around issues & ideas of community significance. Currently focuses on land use planning, human services, cable television, criminal justice & alternative education</p>	<table border="1"> <tr><td>networking</td><td>✓</td></tr> <tr><td>R+D</td><td>✓</td></tr> <tr><td>workshops, classes</td><td>✓</td></tr> <tr><td>construction</td><td></td></tr> </table> <p>class fees, grants, church support</p> <p>CUE Bulletin SASE 1975 Portland Media Guide SASE Resources for Citizen Planners . . . SASE</p>	networking	✓	R+D	✓	workshops, classes	✓	construction	
networking	✓																				
R+D	✓																				
workshops, classes	✓																				
construction	✓																				
networking	✓																				
R+D	✓																				
workshops, classes	✓																				
construction																					
<p>The Biomass Energy Institute, Inc. 304-870 Cambridge St. Winnipeg, Manitoba Canada R3M 3H5</p> <p>Ernie E. Robertson</p>	<p>o acts as a coordinating body between business, government and the academic community in accumulating, classifying and disseminating information relating to renewable biomass energy of all kinds (wood, sugar cane, methane gas from organic wastes)</p>	<table border="1"> <tr><td>networking</td><td>✓</td></tr> <tr><td>R+D</td><td></td></tr> <tr><td>classes, workshops</td><td></td></tr> <tr><td>construction</td><td></td></tr> </table> <p>publications</p> <p>o Biomass Newsletter . . . write for sample o Renewable Biomass Energy Guidebook . . \$2.</p> <p>EP</p>	networking	✓	R+D		classes, workshops		construction		<p>CIDOC APDO 479 Cuernavaca, Mexico</p> <p>Centro Intercultural de Documentacion Ivan Illich</p> <p>2-45-90</p>	<p>o a meeting place and fertile meeting pot for ideals and ideas which have initiated social evolution, alternative education</p> <p>o international network of environment-energy specialists (Robert, Gora, Dupuy, Puiseux, Duve)</p>	<table border="1"> <tr><td>networking</td><td>✓</td></tr> <tr><td>R+D</td><td>✓</td></tr> <tr><td>classes, workshops</td><td>✓</td></tr> <tr><td>construction</td><td></td></tr> </table> <p>language course fees, seminars, workshops grants</p> <p>Deschooling Society Energy and Equity Tools for Conviviality</p>	networking	✓	R+D	✓	classes, workshops	✓	construction	
networking	✓																				
R+D																					
classes, workshops																					
construction																					
networking	✓																				
R+D	✓																				
classes, workshops	✓																				
construction																					
<p>Biospheres 33 Edinboro St. Boston, MASS 02111</p> <p>contact?</p> <p>Chinatown 423-0891</p>	<p>o hydroponics, wind power projects</p>	<table border="1"> <tr><td>networking</td><td>✓</td></tr> <tr><td>R+D</td><td>✓</td></tr> <tr><td>workshops, classes</td><td>✓</td></tr> <tr><td>construction</td><td>✓</td></tr> </table> <p>budget?</p> <p>publications?</p>	networking	✓	R+D	✓	workshops, classes	✓	construction	✓	<p>Community Education Clackamas Community College Oregon City, OR 97045</p> <p>Steve Whiteman</p> <p>503-232-2374</p>	<p>o rural homesteading skills, finding land, organic gardening & composting, building construction</p>	<table border="1"> <tr><td>networking</td><td></td></tr> <tr><td>R+D</td><td></td></tr> <tr><td>classes, workshops</td><td>✓</td></tr> <tr><td>construction</td><td></td></tr> </table> <p>budget? tuition</p> <p>publications?</p>	networking		R+D		classes, workshops	✓	construction	
networking	✓																				
R+D	✓																				
workshops, classes	✓																				
construction	✓																				
networking																					
R+D																					
classes, workshops	✓																				
construction																					
<p>Brace Research Institute MacDonald College of McGill University Ste. Anne de Bellevue 800 Quebec, Canada H9X 3M1</p> <p>Ron Alward Tom Lawand Wendy Ouellette 517-457-6580</p>	<p>o leaflets, drawings and plans for solar stills, solar crop dryers, solar water heaters, windmills for waterpumping</p> <p>o works on projects with Minimum Cost Housing Group</p>	<table border="1"> <tr><td>networking</td><td>✓</td></tr> <tr><td>R+D</td><td>✓</td></tr> <tr><td>classes, workshop</td><td>✓</td></tr> <tr><td>construction</td><td>✓</td></tr> </table> <p>budget? publications, plans, leaflets</p> <p>Ask for their publication list . . . SASE</p> <p>WE, EP</p>	networking	✓	R+D	✓	classes, workshop	✓	construction	✓	<p>Commission for the Advancement of Public Interest Organizations 1875 Connecticut Ave. Suite 1013 Washington, D.C. 20009</p> <p>Carl Clark</p> <p>202-462-0505</p>	<p>o established to investigate ways of enlarging the constituency and capabilities of the public interest movement</p> <p>o focusing on information resources, public interest participation in government workshops on public interest issues (water pollution, toxic pollutants)</p>	<table border="1"> <tr><td>networking</td><td>✓</td></tr> <tr><td>R+D</td><td>✓</td></tr> <tr><td>workshops, classes</td><td>✓</td></tr> <tr><td>construction</td><td></td></tr> </table> <p>publications, grants</p> <p>Information Resources for Public Interest . . . \$10. Safe Drinking Water Information Resources . . . \$2. Federal Advisory Committees Information Resources . . . \$2.</p>	networking	✓	R+D	✓	workshops, classes	✓	construction	
networking	✓																				
R+D	✓																				
classes, workshop	✓																				
construction	✓																				
networking	✓																				
R+D	✓																				
workshops, classes	✓																				
construction																					

FUNDING



If all the folklore about people who write proposals were collected in one text, a paragraph from that text might read something like this:

A proposal writer is a creature found in every climate under the sun, although it/he/she can hardly be thought of as conspicuous, since it/he/she does not work in public, but rather in private offices, library towers and remote bogs in the countryside. Research has shown that the proposal writer becomes particularly scarce when the "crunch of a deadline" is near and his activities often extend into the deep hours of the night. Yet it is not so much for his physical characteristics or even for his peculiar writing habits that the proposal writer is best known, but instead for the mysterious gifts of tongue and political cunning which make it/him/her such a success at the grantsmanship game.

At a time when more people are relying upon grants from foundations, and when foundations are able to expect competing applications for their funds, the grantsmanship game is being demystified by public workshops, conferences and publications such as this one. Roughdraft II will work for anyone who is learning how to play the funding game, and also for people who are fortunate enough to have good ideas and good friends to implement them.

Certain aspects of the funding process can be described in familiar ways, as consecutive "steps" or "paths." But the funding process, like most other processes, can be described as lineal only in hindsight. In retrospect, a scientist may see his research as a series of evolving ideas, while at the time he was trying to do his best with the material at hand.

It is important to remember that the funding process employs certain gamesmanship tactics, and, like a game, it is subject to the laws of chicanery and fate. But while a game ends with a winner and a loser, success in the funding process means the applicant and the funding agency go down the yellow brick road together.

A TRAVEL GUIDE TO

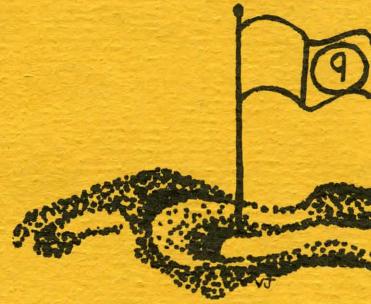
THE DAWNING OF AN IDEA



1

SEEKING COMMUNITY SUPPORT

- Is community support visible? Has the idea gathered momentum? Are individuals and organizations with clout already involved?
- Is self-sustaining citizen participation built into the proposal? Is community dialogue mentioned?
- Are a broad range of community interests represented?
- Are available, accessible resources being used? How about existing networks?
- Will the proposal win prestige for the funding agency within the community?



WITHOUT COMMUNITY SUPPORT
SANDTRAP: YOU TRY TO SEEK

2

4

3

SCOUT A FUNDING AGENCY

(See Resource Index under "Grants")

- Is this an idea whose time has come?
- Is the idea transferrable? To whom? Provide evidence and develop a plan for transferring the idea if it works.

FIND A QUIET PLACE IN THE COUNTRY

- Write a two-page preliminary draft. Try it out on someone who is fairly objective. This is a good test of the proposal's clarity and cohesiveness.
- Include specific rationale, statement of objectives and methods (measuring instruments, data bases, indicators).
- Include an equally specific and realistic budget. Account for every item you've asked money for.
- Thoroughly research the area of interest. Find out about similar projects going on in your community.
- Get the bogus points for clean typing and indexing, slick covers, good quality paper and graphics.
- Investigate the language set and the special interests of the agency. Use the information to your advantage.



BOG: LACK OF INSPIRATION—TRY BRAINSTORMING

THE FUNDING PROCESS

5

ESTABLISH A GOOD CONNECTION WITH THE FUNDING AGENCY

- Top priority: get to know someone in a funding agency. Remember, funding agencies consist of people who need success, approval, affection and salaries.
- Get to know someone who knows someone in a funding agency as a way to get acquainted with the agency.
- Establish a relationship with the people who answer the telephone when you call. Even "on the phone" familiarity helps.



PITFALL: YOU TRY TO SEEK FUNDING WITHOUT COMMUNITY SUPPORT

6

SUCCESS: TAKE THE YELLOW BRICK ROAD

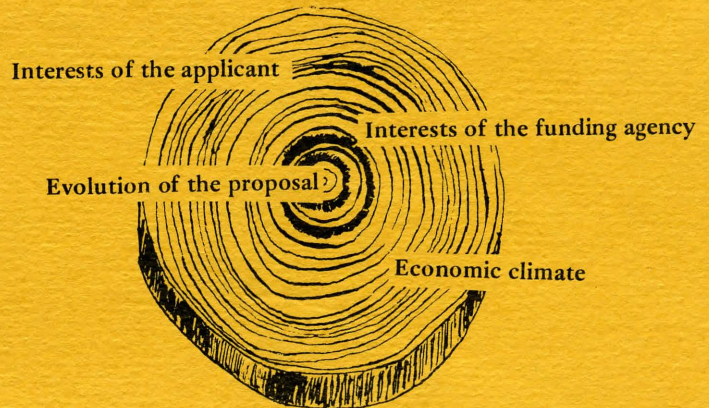


DETOUR: FRIENDS ARRIVE, BRINGING THE PARTY WITH THEM



ANOTHER VIEWPOINT

Anyone who's gotten funded realizes that step-by-step directions do not adequately describe a process which involves a high degree of gamesmanship skill. "Plays" are executed according to the logic of hunches, interpolations and probabilities. (If I re-establish contact with these prestigious members of my community, will their clout be enough to weight the scales in my favor?) Hence, this non-linear process might resemble a coil, a spiral or a whirligig more than it resembles a lineal path. The proposal evolves as the result of a multiplicity of complex interrelated factors—economic climate, the biases of the funding agency and the interests of the board of directors—all exerting pressure at the same time. Once mutual benefit has been established, the emphasis shifts toward mutual cooperation between the funder and the fundee.



HITCHING POSTS

What's in a name?

"Even when a cognitive psychologist thinks he's not talking jargon he still writes like a cognitive psychologist who thinks he's not talking jargon."

—*Behavior Today*, November 8, 1971
1971, page 7.

What's a well-written proposal?

If you are approaching a foundation for the first time, include references familiar with your work. Once you have established a reputation for managing a proposal successfully, your chances of being funded for another project by the same foundation, or refunded, escalate sharply.

Include a statement about how your proposed project relates to the foundation's purposes and programs.

One important thing to remember in contacting a foundation representative or board member is that each agency is comprised of individuals who, like all people, have particular interests, aspirations and vulnerabilities. Don't be overly solicitous in person. That's a drag for anyone to deal with.

Remember that people who have money have reams of paper work. Be brief.

What is "community need"?

One of the most difficult things you will have to do is establish the "need" for your project. This is best accomplished if momentum for the idea already exists. If the project idea has gathered momentum, it should be a visible part of community support.

The best way to show community support is to ask for letters of support from agencies and friends. Include the letters in your proposal.

Indicate what other people may benefit from the grant. The Union of Young Environmentalists calls this the "multiplier effect" and emphasizes that it usually impresses funding agencies.

Justify every item that you spend money for.

Don't overcommit yourself. Remember that it's easy to commit yourself on paper, but that you will be expected to do everything you spell out.

Don't be upset if you're asked to rewrite a page or a section of the proposal to meet the review committee's requirements. Consider yourself lucky.

Some fine points:

- Include vitas of all personnel to be funded
- Include project performance time schedules, noting areas of individual responsibility.
- Include a statement of plans for reports or publications involved
- Include a statement on evaluation procedures, if not already stipulated
- Include a statement of any other support already committed to you; document cash or in-kind contribution.

Community Environmental Education Program Serramonte High School Daly City, Calif. 94015 Kathy Connors phone?	o being expanded to include alternative energy research + experimentation o already includes urban info-gathering, video as tools to effectiveness; organic gardening, scientific horticulture, animal husbandry.	networking R+D classes-workshops construction	budget?	Ecotope Group Box 5599 University Station Seattle, WASH 98105 Evan Brown Ken Smith Monroe, Washington } 206-794-8503 }	o non-profit scientific research and educational organization composed of designers, builders, engineers, architects + scientists working on energy + shelter systems o works with Housing Assistance Service (Seattle), Project Associates (Portland) and OPEN-N.W. Info Network	networking R+D workshops-classes construction	budget? consulting, teaching	Process Feasibility Study: The Anaerobic Digestion of Dairy Cow Manure at the State Reformatory Honor Farm, Monroe, Wash. \$800
Community Technology 1520 New Hampshire Ave., N.W. Washington, D.C. 20036 Karl Hess 202-332-5124	o the practical application of neighborhood technology including basement fish farms, shared tools + skills in community workshops, urban solar energy systems built by the owner, hydroponic gardening	networking R+D workshops-classes construction	\$2,500 WE, EP time, tools, money of members	Energy Action of Washington P.O. Box 4244 Seattle, Wash. 98104 Dana Davis 206-392-3538	o energy lobbying o legislative "energy" phone tree o working with SEANET on public alternative energy displays o planning environmental education center o nuclear moratorium o reference library	networking R+D workshops-classes construction	\$150 memberships, donations	Energy Action newsletter with yearly membership... \$3. 1975 Alternate Energy Directory now being compiled
The Delphian Foundation Sheridan, OR 97378 Mark Siegel 503-843-3521	o 225 ac. organic farm, solar energy research, K-12 school using Scientology educational techniques, environmental master plan for 806 ac., forestry, food program for 150 people, recycling alterations to buildings, conversion to renewable energy systems	networking R+D classes-workshops construction	\$750,000 donations, grants	The Energy Center Oregon Museum of Science + Industry 4015 SW Canyon Rd. Portland, OR 97221 Linda Craig Mary Lawrence Rick Siewert Lee Johnson 503-248-5920	o information center o ASE classes, geodesics o museum exhibits of energy production + conservation o teacher's educational materials o general theme: "Living Lightly in an energy-scarce future"	networking R+D workshops-classes construction	\$30,000 tuition, grants,	Solar collector manufacturer list. \$1.00 Solar, wind, methane, energetics, S-rotor, home heat loss info sheets. free
Earth Metabolic Design Box 2016, Yale Station New Haven, CONN 06520 Howard Brown 203-776-4921 or 436-1973	o conducts design science workshops led by R.B. Fuller and World Game Studies Workshop 1975 focusing on the transition to renewable energy sources	networking R+D workshops-classes construction	budget? workshops, publications	Energy Center Linfield Research Inst. Linfield College McMinnville, OR 97128 William Mackie	o ASE classes	networking R+D classes-workshops construction	budget? tuition, grants	
Earthmind Josel St. Saugus, CA. 91350	o working on research, conversion and education in areas of alternative energy sources, nutrition, agriculture + building techniques o fabricating solar panels, building root cellar, planning methane digester in greenhouse	networking R+D classes-workshops construction	\$70,000 publications, donations slide-show lectures	Energy & Man's Environment P.O. Box 200 Beaverton, OR 97004 Ina Ish John Jones 503-649-0404/0405	o encourages the free exchange of information among industry, government environmental groups + education o sponsors state-wide teachers conferences on energy-environment information + curriculum with participation of industry + govt experts	networking R+D workshops-classes construction	\$120,000 funded by public + private utilities through NELPA + PPC	K-12 Activity Guide..... \$3.00 (Free to Oregon, Washington, No. Calif, Idaho + Utah teachers) 1975 Classroom Energy Calendar \$2.50

LEARNING TO LIVE LIGHTLY

<p>Environmental Living Studies Environmental Education Center Portland State Univ. P.O. Box 751 Portland, OR 97207 Laura Williamson 503-229-4682</p>	<p>education for creative, self-reliant living; the program draws course offerings that relate to such life support systems as food production, health, shelter, nutrition, energy conservation & related practical technologies</p>	<table border="1"> <tr><td>networking</td><td></td></tr> <tr><td>R+D</td><td></td></tr> <tr><td>classes-workshops</td><td>✓ tuition</td></tr> <tr><td>construction</td><td></td></tr> </table> <p>ELC brochure</p>	networking		R+D		classes-workshops	✓ tuition	construction		<p>Floatown 13007- 8th N.E. Seattle, WASH 98125 Bjorn Lunde 206-363-3285</p>	<p>an ocean-borne community of small vessels clustered around a 300 ft. long mother ship... now in the creating/planning phase</p>	<table border="1"> <tr><td>networking</td><td></td></tr> <tr><td>R+D</td><td>✓</td></tr> <tr><td>classes-workshops</td><td></td></tr> <tr><td>construction</td><td>✓</td></tr> </table> <p>Floatown brochure SASE</p>	networking		R+D	✓	classes-workshops		construction	✓
networking																					
R+D																					
classes-workshops	✓ tuition																				
construction																					
networking																					
R+D	✓																				
classes-workshops																					
construction	✓																				
<p>Environmental Action of Colorado 1100 14th St. Denver, CO 80202 Ben Billings - E.A. Reprints Carol Pesko - Solar Directory Elizabeth Kimman - Solar Energy Exhibition Prog. Karen George - Solar audio-tapes 303-534-1602</p>	<p>an information clearing-house, an energy study and advocacy group, and a catalyst for community action on environmental problems</p>	<table border="1"> <tr><td>networking</td><td>✓ budget? WSEP</td></tr> <tr><td>R+D</td><td></td></tr> <tr><td>workshops-classes</td><td>✓ non-profit, tax-exempt, grants, donations, student fees</td></tr> <tr><td>construction</td><td></td></tr> </table> <p>Write for their pricelist of films, books, reprints Solar Energy Directory \$15.00</p>	networking	✓ budget? WSEP	R+D		workshops-classes	✓ non-profit, tax-exempt, grants, donations, student fees	construction		<p>Greenpeace Experimental Farm, RR 1, Denman Island, British Columbia, CANADA V0R 1T0 Tom Lang - agriculture and self-sufficient lifestyles Jim Bohlen - small-scale sources of energy and human habitation design</p>	<p>est'd to provide a milieu for developing techniques that can lead to comfortable material lifestyles and which can restore & preserve the environment 1975 Summer Work-Study Program: applied ecology, manual skills & proper use of tools, organic garden principles & practice, natural energy sources, microclimate</p>	<table border="1"> <tr><td>networking</td><td>✓ budget?</td></tr> <tr><td>R+D</td><td>✓</td></tr> <tr><td>workshops-classes</td><td>✓ tuition</td></tr> <tr><td>construction</td><td>✓</td></tr> </table> <p>Greenpeace brochure write A Practical Approach toward Greater Self-Sufficiency and Less Environmental Disruption for the Individual, Family and Community in Canada . . . write for price</p>	networking	✓ budget?	R+D	✓	workshops-classes	✓ tuition	construction	✓
networking	✓ budget? WSEP																				
R+D																					
workshops-classes	✓ non-profit, tax-exempt, grants, donations, student fees																				
construction																					
networking	✓ budget?																				
R+D	✓																				
workshops-classes	✓ tuition																				
construction	✓																				
<p>Evergreen Environmental Resource Center The Evergreen St. College CAB Building, Rm 385 Olympia, Wash 98502 Don Blanchard Loren Hillsberry Chuck Albertson 206-866-6089</p>	<p>providing citizen access to legal, technical and tactical tools needed to effectively address environmental issues Shorelines Mgmt Act Trident nuclear sub base Satsop nuclear plant general environmental education</p>	<table border="1"> <tr><td>networking</td><td>✓ \$5,500</td></tr> <tr><td>R+D</td><td>✓</td></tr> <tr><td>classes-workshops</td><td>✓</td></tr> <tr><td>construction</td><td></td></tr> </table> <p>quarterly journal will be published</p>	networking	✓ \$5,500	R+D	✓	classes-workshops	✓	construction		<p>Habitat Inc. Box 136 Belmont, MASS 02178 Bob Daley 617-489-3850</p>	<p>a school where students work on real environmental problems such as providing energy to light the resource center by building a wind generator</p>	<table border="1"> <tr><td>networking</td><td>✓ budget?</td></tr> <tr><td>R+D</td><td>✓</td></tr> <tr><td>classes-workshops</td><td>✓ donations, tuitions, grants</td></tr> <tr><td>construction</td><td>✓</td></tr> </table> <p>Habitat brochure write for info</p>	networking	✓ budget?	R+D	✓	classes-workshops	✓ donations, tuitions, grants	construction	✓
networking	✓ \$5,500																				
R+D	✓																				
classes-workshops	✓																				
construction																					
networking	✓ budget?																				
R+D	✓																				
classes-workshops	✓ donations, tuitions, grants																				
construction	✓																				
<p>The Farallones Institute P.O. Box 700 Pt. Reyes, CA 94956 Sim Van der Ryn David & Karen Katz Jay Baldwin Arthur Boericke Barry Shapiro 415-663-4707</p>	<p>an alliance of biologists, architects, agriculturists, engineers, & artisan working together to design integrated, small-scale, self-sustaining systems of habitat and life support Whole Life Systems Summer Program 1975: shelter design & construction, small farming, natural energy systems</p>	<table border="1"> <tr><td>networking</td><td>✓ budget? EP</td></tr> <tr><td>R+D</td><td>✓ apprenticeship</td></tr> <tr><td>workshops-classes</td><td>✓ tuition, grants, tax-exempt donations</td></tr> <tr><td>construction</td><td>✓</td></tr> </table> <p>The Compost Privy . . . write for price Farallones Inst. brochure & poster . . . free</p>	networking	✓ budget? EP	R+D	✓ apprenticeship	workshops-classes	✓ tuition, grants, tax-exempt donations	construction	✓	<p>Helion Box 4301 Sylmar, CA 91342 Jack Park Bill Goddard 213-367-8291</p>	<p>wind energy research, development & education group which plans to manufacture a wide variety of wind machines</p>	<table border="1"> <tr><td>networking</td><td>✓ budget? EP</td></tr> <tr><td>R+D</td><td>✓</td></tr> <tr><td>workshops-classes</td><td>✓ publications, slide show presentations</td></tr> <tr><td>construction</td><td>✓</td></tr> </table> <p>Simplified Wind Power Systems for Experimenters \$6.00</p>	networking	✓ budget? EP	R+D	✓	workshops-classes	✓ publications, slide show presentations	construction	✓
networking	✓ budget? EP																				
R+D	✓ apprenticeship																				
workshops-classes	✓ tuition, grants, tax-exempt donations																				
construction	✓																				
networking	✓ budget? EP																				
R+D	✓																				
workshops-classes	✓ publications, slide show presentations																				
construction	✓																				
<p>Falls Creek Project Box 1504 Missoula, MONT 59801 Francis Mitchell 406-549-1493</p>	<p>experiential & environmental educational process; consulting to schools; direct operation of educational programs; college credit summer wilderness learning</p>	<table border="1"> <tr><td>networking</td><td>✓ \$10,000</td></tr> <tr><td>R+D</td><td></td></tr> <tr><td>classes-workshops</td><td>✓ contracts, tuitions, grants, donations</td></tr> <tr><td>construction</td><td></td></tr> </table> <p>Falls Creek Project brochure free</p>	networking	✓ \$10,000	R+D		classes-workshops	✓ contracts, tuitions, grants, donations	construction		<p>HERB: Huxley Environmental Reference Bureau Huxley College Bellingham, WASH. 98225 Will McDaniels 206-676-3520</p>	<p>environmental information center Western Wash. State's environmental college; offers classes, env. education major, env. studies major, environmental internships</p>	<table border="1"> <tr><td>networking</td><td>✓ budget?</td></tr> <tr><td>R+D</td><td>✓</td></tr> <tr><td>classes-workshops</td><td>✓</td></tr> <tr><td>construction</td><td></td></tr> </table> <p>Huxley Humus newsletter free</p>	networking	✓ budget?	R+D	✓	classes-workshops	✓	construction	
networking	✓ \$10,000																				
R+D																					
classes-workshops	✓ contracts, tuitions, grants, donations																				
construction																					
networking	✓ budget?																				
R+D	✓																				
classes-workshops	✓																				
construction																					

GRANTS

A RESOURCE INDEX—more or less related to funding

BOOKS, MANUALS, GUIDES:

Environmental Problem-Solving: A Process Manual

Union of Young Environmentalists
University of Wisconsin, Green Bay
Green Bay, Wisconsin 54302
Section on how to write grants contains especially salient tips like "Don't over-commit yourselves."

Foundations, Private: Giving and Public Policy

University of Chicago Press
5801 Ellis Avenue
Chicago, Ill. 60637
Findings by the Petersen Commission, convened by John B. Rockefeller III in 1968. Published 1972.

Fundraising Made Easy

E.S. Newman and L.J. Margolin
Oceana Press
10522 Dobbs Ferry
New York, N.Y. 10522
A short form guide, okay as an introduction.

Handbook on Community Foundations in the United States and Canada, and Report on Status, Community Foundations in the United States and Canada.

Council on Foundations
345 E. 46th Street
New York, N.Y. 10017

How to Write Successful Foundation Presentations

Joseph Dermer
Public Service Materials Center
104 E. 40th St.
New York, N.Y. 10016

The Money Givers: An Examination of the Myths and Realities of Foundation Philanthropy in America

Joseph Gulden, 1971
Random House, Inc.
201 E. 50th St.
New York, N.Y. 10022

National Science Foundation Guide to Programs (1975). \$1.70

From:
U.S. Superintendent of Documents
Government Printing Office
Washington, D.C. 20402

85-page guide describing research centers, application procedures, grants available, special programs, etc.

The Organizer's Manual

The O.M. Collective, 1971
Bantam Books, Inc.
A National General Company
666 Fifth Avenue
New York, N.Y. 10019

Provides practical suggestions for small group and grass roots organizing and political self-education. See section on "Community Support."

Philanthropy in the Seventies

Emerson Andrews
Basic Books, Inc.
404 Park Avenue South
New York, N.Y. 10016

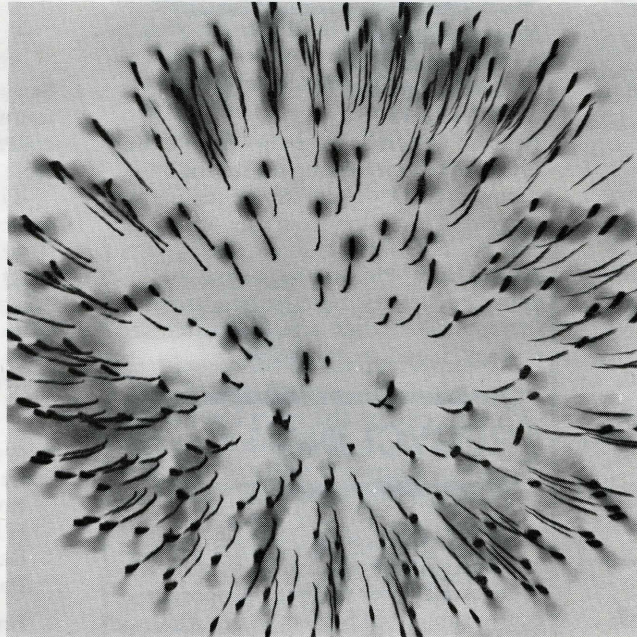


Photo: Ancil Nance

Seeking Foundation Funds

David Church
National Public Relations Council
on Health and Welfare Services
419 Park Avenue South
New York, N.Y. 10016

The Seven Laws of Money

Michael Phillips, 1974
Word Wheel Books
Random House, Inc.
201 E. 50th St.
New York, N.Y. 10022

These seem worth listing:

- Law I: Do it! Money will come when you are doing the right thing.
- Law II: Money has its own rules.
- Law III: Money is a dream.
- Law IV: Money is a nightmare.
- Law V: You can never really give money away.
- Law VI: You can never really receive money as a gift.
- Law VII: There are worlds without money.

BROCHURES & NEWSLETTERS:

Foundation News

Foundation Center Publication
Subscription Dept.
428 E. Preston Street
Baltimore, Md.
Bi-monthly—\$6 per year.

Foundation Reporter

Taft Products, Inc.
1000 Vermont Avenue NW
Washington, D.C. 20005
A publication of the Taft Information System, which relies on personal contact plus Foundation Center information.

Fund Raising

Student Mobilization Committee
109 Vermont Avenue NW
Washington, D.C. 20005
Brochure—\$2 per 100.

The Grantsmanship Center News

1015 West Olympic
Los Angeles, California 90015
Attn: Ms. Natalie Hope

The Grantsmanship Center's training program travels to host cities across the nation providing resource materials, program planning, financial development and proposal writing instruction.

CATALOGUES, DIRECTORIES, INDEXES & ANNUAL REPORTS

Annual Register of Grant Support

Academic Media
32 Lincoln Avenue
Orange, New Jersey 07050

Annual Report of the National Science Foundation

Social Science Division
National Science Foundation
1800 G St. NW
Washington, D.C. 20005

Catalogue of Federal Domestic Assistance

Executive Office of the President
Office of Management & Budget
Washington, D.C. 20503

Conferences on Foundations, Nov. 1970: Transcript

Charles F. Kettering Foundation
5335 Far Hills Avenue
Dayton, Ohio 45429

Croft Guide to Federal Assistance for Education

Monthly Supplement
Appleton-Century-Crofts
6761 Linda Rosa Ave.
La Jolla, California 93027

Foundation Annual Report

The Foundation Center
444 Madison Avenue
New York, N.Y.

Registrar of Charitable Trusts

Department of Justice
100 State Office Building
Salem, Oregon 97310
Catalogue of Oregon foundations.

LIBRARIES:

Cleveland Foundation Library
700 National City Bank Building
Cleveland, Ohio 44114

The Danforth Foundation Library
222 South Central Avenue
St. Louis, Mo. 63105

Foundation Center and Foundation Center Library

New York:
444 Madison Avenue 10022
Washington: D.C.:
1001 Connecticut Avenue 20036

Headquarters house the largest collections, while eight regional depository libraries handle phone and in-person inquiries. Write for locations.

Graduate Social Science Library

Stephen Hall
Univ. of California at Berkeley
Berkeley, California 94720

Metropolitan Assn. for Philanthropy

607 N. Grand Blvd.
St. Louis, Mo. 63103
Information Clearinghouse for eight St. Louis foundation, with inside information on others in the area.

The Newberry Library

60 W. Walton St.
Chicago, Illinois 60610

Regional Foundation Library

Hogg Foundation for Mental Health
University of Texas
Austin, Texas 78712
Informal counseling service may steer applicants in other promising directions.

Taft Information System

1000 Vermont Avenue NW
Washington, D.C. 20005
In 1972 \$185 a year bought you into foundation board rooms for the best inside view. Expensive, but invaluable information.

UCLA Research Library

(Foundation Collection)
Los Angeles, California 90024

OTHERS:

Behavior Today

317 14th St.
Delmar, California 92104
October 11, 1971 - December 20, 1971.
Provides how-to-do-it information and an introductory listing of federal and private foundations, as well as where and how to apply for fellowships.

INFORMATION

Continued from page 9

Vermont Tomorrow Environmental Education Fund
5 State St.
Montpelier, Vt. 05602

This non-profit environmental action organization combines the best of several worlds: litigation, research, long-range planning and communication, all evident in their excellent newsletter. Though it is primarily information about Vermont and New England, it is well worth reading by others, and if you are in another region, this may be one of the best ways to compare notes with the New England region. In Vermont they have a Governor's Task Force on Wood Energy.

The state of Vermont has a unique problem. 60,000 pounds of stale crackers, left over from 10 years ago during the state's fallout shelter program.

Environmental Remote Sensing Applications Laboratory
Oregon State University
Corvallis, Or. 97331

Makes available a library of NASA aerial photography and satellite imagery of Oregon; provides advice, consultation on the use of such imagery for use, especially by resource managers. For specifics of what images they have, write for description and newsletter.

Shorey Publications
815 3rd Ave.
Seattle, Wa. 98104

The truly large, unique bookstore in Seattle publishes many unique titles, mostly reprints of 19th century books. Many oddities like *The Nome Telephone Directory, 1905*. Over 300 titles in history, native Americans, geology. The utilitarian series includes "home tanning," "hop culture in the U.S.," "building with logs," "prospector's manual," "fern collector's guide." Also facsimiles of old maps. Write for free publications list.

Federal Environmental Law. Guilbert, Thomas and Dolgin, Erica L., editors.
West Publishing Co.
St. Paul, Minn. 55102

1600 pages. From reports, an excellent guide for attorneys, policy analysts, intervenors. Obviously technical.

Spokane Resource Handbook. Published by University Year for Action, compiled by Rick Lawrence.
Eastern Wash. State College
Cheney, Wa. 99004

A 71-page directory to social services in the Spokane area. (No set price)

See also: Rush

MEDIA

New Age Journal
145 Portland St.
Cambridge, Ma. 02139
617-492-1800

Reacted at first to overworked title, but found much interesting useful food for thought. Can't yet determine its unique tangential direction from one of its parents, *East-West Journal*, except some how-to-do-it. Philosophers more than gurus, and less esoteric esoteric stuff. Includes economics, arts, environment/ecology. Good shorts. \$6/yr.

RECYCLING

Land Reclamation by adding humus and nutrients by controlled application of digested sewer sludge; a proposal recently submitted by the Marion County Health Dept. (2455 Franzen St., N.E., Salem, Or. 97301), and approved by the county board of commissioners, is now submitted to the Mid-Willamette Valley Council of Governments, where funding will be sought. (C.S. Sherman, Marion County Health Dept.)

Dept. of Land Conservation & Development

1175 Court St., N.E.
Salem, Or. 97310
503-378-4926

The statewide planning goals and guidelines adopted Dec. 27, 1974, now are available for the asking.

Bureau of Municipal Research and Service

P.O. Box 5177
University of Oregon
Eugene, Oregon 97403
503-342-1411

Several reports, some outdated, but useful Oregon-wide surveys of refuse collection disposal techniques, costs, etc.

1) Refuse Collection and Disposal, survey of practices in 164 Oregon cities. (Info. bulletin #145) March, 1965.

2) Refuse Collection Rates and Practices in Oregon Cities and Counties. (Policy and practice #26) June, 1971.

3) The Regulation of Solid Waste Collection and Disposal. August, 1974.

Recycling Projects in Schools.

Some successful projects:

Bob Schiopen
H.E.L.P. Earth Live Permanently
Dallas High School, 500 E. Ash
Dallas, Or. 97338, 623-8336

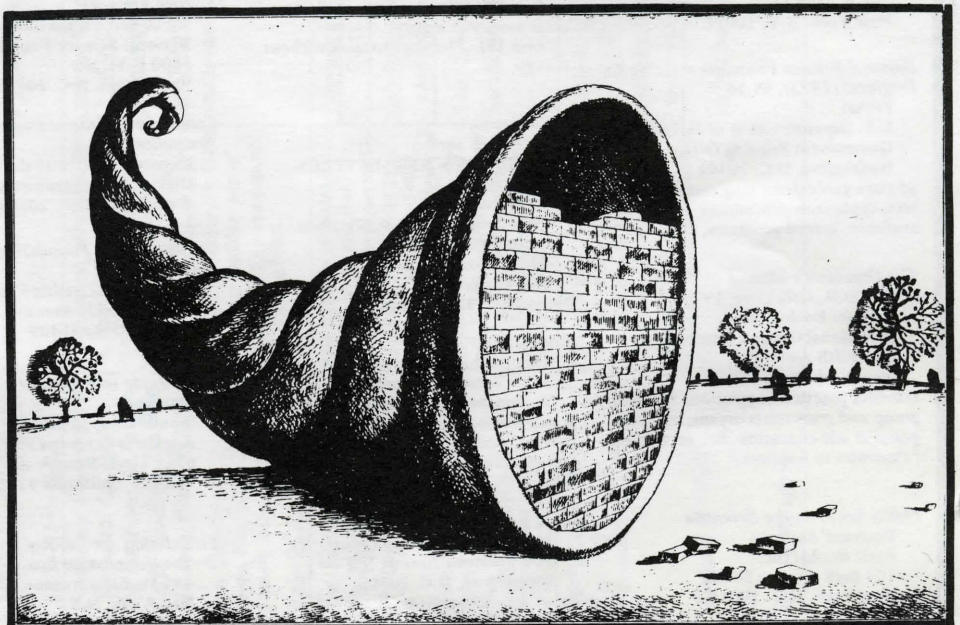
Peter Thurston, BRING Recycling
Eugene School District, P.O. Box 885
Eugene, Or. 97403, 746-3023

Amboy, Wash. Elementary School
Contact:
Susan Regan, S.W. Wash. Recycling
5701 N.E. 88
Vancouver, Wa. 98665, 695-1635

Ken Becker, Eco-Activist Club
Lake Oswego High School
2501 Country Club Dr.
Lake Oswego, Or. 97034, 636-3673

Harry Burrige, Lebanon Key Club
Lebanon Union High School
Lebanon, Or. 97355, 753-6368

(From DEQ Recycling Switchboard newsletter)



Recycling Legislation

Below are the names of some of the people who will be determining policies affecting recycling and solid waste management in the Portland metropolitan area.

Rep. Norma Paulus, Chairperson
Dept. of Environmental Quality
Citizens' Advisory Committee on
Solid Waste Management
1520 Trade St., S.E.
Salem, Or. 97301

Your state legislators—representative and senator. Call your county courthouse if you don't know who they are.

Commissioner Robert Schumacher
Clackamas County Courthouse
Oregon City, Oregon 97045

Governor Robert W. Straub
State Capitol
Salem, Or. 97310

Commissioner Connie McCready
City Hall
Portland, Or. 97204

Commissioner Mel Gordon
Multnomah County Courthouse
Portland, Or. 97204

Commissioner Burton C. Wilson, Jr.
Washington County Courthouse
Hillsboro, Or. 97123

(Recycling Information Office, DEQ,
1234 S.W. Morrison, Portland, Or.
97205, 229-5555)

See also: Audio-Visual, Water, Groups/
Assn.

OUTDOOR ED

Survival Education Association
9035 Golden Given Rd.
Tacoma, Wa. 98445

Lots of very useful materials for use by schools as well as individuals. *Surviving the Unexpected Wilderness Emergency* by Dan Fear is a guide for getting by in the wilderness. \$3.95. 196 pp.

Surviving the Unexpected curriculum guide encompasses home and wilderness survival problems and is like the wilderness emergency book, except the information is in the form of projects and problems for classroom.

Also available are pamphlets/sheets on a variety of subjects, like compass orientation, wilderness travel . . .

The bibliography they have is the best survival in the wild and/or alone I've seen anywhere.

The Survival Education people also work with two other groups: Survival and Disaster Education Program, Dept. of Emergency Services, 4220 E. Martin Way, Olympia, Wa. 98504.

The state of Washington has begun a coordinated teaching program to be eventually statewide. Robert Skip Stoffel, coordinator. Write for outline of proposal and in-use curriculum.

Also:
Council for Survival Education
3380 Parfet
Wheat Ridge, Colo. 90033

Promotion, establishment of survival education programs, nationwide.

Bigfoot News

P.O. Box 632
The Dalles, Or. 97058
503-298-5877

There are these dedicated people searching for Bigfoot, not to shoot him down, but I guess talk to him or her or them. Bigfoot has a town named after her/him (but according to the newsletter, they can't find the town) and sandwiches. Also, in searching for Bigfoot, the people find other things. Write for a sample copy or subscribe for \$5/yr. (12 issues).

See also: Agriculture, Energy

POPULATION

Zero Population Growth
1346 Connecticut Ave., N.W.
Washington, D.C. 20036
202-785-0100

Many materials available for classroom use. Especially useful is the Population Education Resources Kit, which is mailed free to teachers (write on school stationery); contains a 70-page booklet, "A Study Guide to Population and the American Future," as well as special lists on audiovisual materials, population study centers, and a directory to other groups concerned with population problems.

Equilibrium, an excellent publication, is no longer published. (Perhaps back issues on Energy, vol. 2, #3, are still available.) The *National Reporter* is the still existing newsletter of ZPG, which is directed at all persons (not just schools) involved in population problems. \$5.50/yr.

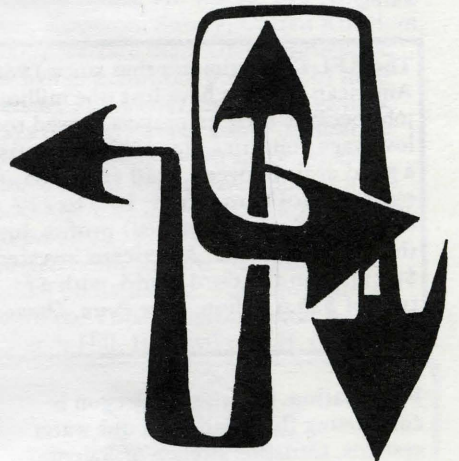
Other reports, books, published, ask for ZPG price list.

Two local chapters:
Lane County ZPG
P.O. Box 5494
Eugene, Or. 97405

Corvallis ZPG
Student Activities Center
Oregon State U. Memorial Union
Corvallis, Or. 97331

TRANSPORTATION

CARPPOOL. Portland 227-7665. For help in matching your transportation needs with others'. They report that 22,000 people joined 2238 carpools since last February, and estimate a gasoline savings of 6 million gallons. Collectively the car poolers saved about \$12 million.

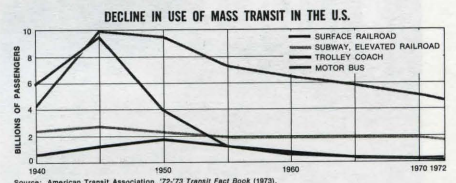


Graphic: Victoria Johnson

Bicycle Repair Co-op, forming in Portland to create a place where tools, some cheap/barter mechanics might be available, etc. Interested? Call Bart Jones at People's Food Store. 236-9056.

Bicycling and Hostels. Special issue of: *Outdoor Recreation Action*
Bureau of Outdoor Recreation
U.S. Dept. of Interior
Washington, D.C. 20240

The winter '74 issue, report #34—a good access guide to bike routing, paths, history, groups, other sources of information. \$1.10 single copy. (*Outdoor Recreation* is \$4.10 a year.)



From: *Interchange*

Anne Hughes and Friends Gallery
2328 N.W. Everett
Portland, Or. 97230

Had, or perhaps still does have, a marvelous exhibit of bicycles in paintings, drawings, collage, etc.

See also: Art

WATER

Demonstration of Waste Flow Reduction from Households

National Environmental Research Center

Environmental Protection Agency
Cincinnati, Ohio 45268

Looks into various reuse, low use, recycling potentials in household use of water.

The AFL-CIO estimates that since 1966 American workers have lost one million jobs because their employers moved to low wage countries. For business it was a good deal. Between 1950 and 1965, overseas profits rose from 10% to 22% of total U.S. (non-financial) profits. In that 15-year period, Americans invested \$9 billion in the third world, with a return of \$25.6 billion. (*Lee Penn, Oregon Times*)

Fluoridation. Once again Oregon is considering fluoridation in our water systems. Christine French of Salem wrote to us, "It has been estimated (and this is only an estimate) that 87 tons of fluoride would be dumped into the Columbia River annually if Portland fluoridated the drinking water." She recommends people pick up a copy of "Fluoridation and Truth (not tooth) Decay," Top Ecol Press, 18416 Van Owen, Reseda, Ca. 91335. \$3.50. I might also suggest people write for sample copy of *National Fluoridation News*, Rt. 1, Gravette, Ark. 72736. \$2/yr.



Photo: Ancil Nance

WHOLE SYSTEMS

January 1975

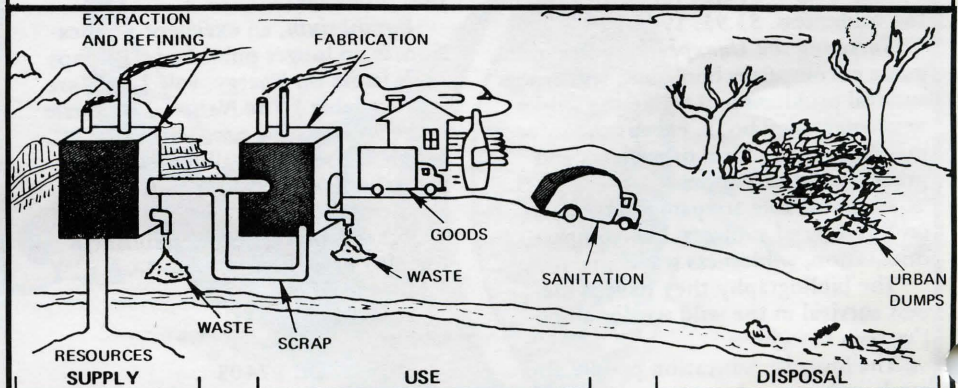
OREGON PROGRESS NEWSLETTER

Page 11

OREGON ECONOMIC INDICATORS⁽¹⁾ ... COMPILED BI-MONTHLY

ITEM	November ² 1974	October ³ 1974	November 1973	Change From Oct. 1974	Nov. 1973
Civilian Labor Force	1,025,600	1,035,600	1,002,700	- 9,400	+ 22,900
Unemployment	74,000	58,900	58,800	+ 15,100	+ 15,200
Percent of Labor Force	7.2	7.1	5.9	xxx	xxx
Seasonally Adjusted Percent	7.5	7.1	6.1	xxx	xxx
Total Employment	951,600	976,100	943,900	- 24,500	+ 7,700
Total Nonagricultural Employment	843,000	855,700	832,000	- 12,700	+ 11,000
Wage and Salary Employment Index (Seasonally Adjusted)	129,000	129,100	127,300	xxx	xxx
Total Manufacturing	190,800	201,600	196,800	- 10,800	- 6,000
(Durable Goods)	137,900	143,800	146,600	- 5,900	- 8,700
Lumber and Wood Products	65,300	70,400	76,900	- 5,100	- 11,600
Logging and Sawmills	37,600	40,300	40,700	- 2,700	- 3,100
Veneer and Plywood	18,500	20,400	25,300	- 1,900	- 6,800
Furniture and Fixtures	3,100	3,300	4,200	- 200	- 1,100
Stone, Clay and Glass Products	3,700	3,800	3,400	- 100	+ 300
Primary Metals	9,700	9,700	8,700	0	+ 1,000
Fabricated Metal Products	10,300	10,300	9,800	0	+ 500
Machinery	12,600	12,800	12,500	- 200	+ 100
Electrical Equipment and Supplies	14,400	14,400	13,000	0	+ 1,400
Transportation Equipment	13,700	13,800	12,800	- 100	+ 900
Other Durable Goods	5,100	5,300	5,300	- 200	- 200
(Nondurable Goods)	52,900	57,800	50,200	- 4,900	+ 2,700
Food and Kindred Products	25,400	30,100	22,200	- 4,700	+ 3,200
Canning and Preserving	14,000	18,600	10,700	- 4,600	+ 3,300
Textile Mill Products	2,600	2,600	2,900	0	- 300
Apparel	3,200	3,200	3,500	0	- 300
Paper and Allied Products	9,700	9,900	9,700	- 200	0
Printing and Publishing	7,800	7,700	7,600	+ 100	+ 200
Other Nondurable Goods	4,200	4,300	4,300	- 100	- 100
Total Nonmanufacturing	652,200	654,100	635,200	- 1,900	+ 17,000
Mining	1,500	1,700	1,400	- 200	+ 100
Contract Construction	38,700	41,700	39,000	- 3,000	- 300
Transportation and Utilities	51,400	52,000	52,700	- 600	- 1,300
Transportation	31,900	32,400	33,000	- 500	- 1,100
Communications and Utilities	19,500	19,600	19,700	- 100	- 200
Trade	202,700	200,500	198,800	+ 2,200	+ 3,900
Wholesale Trade	54,300	54,500	51,800	- 200	+ 2,500
Retail Trade	148,400	146,000	147,000	+ 2,400	+ 1,400
Finance, Insurance and Realty	45,600	45,500	43,700	+ 100	+ 1,900
Service and Miscellaneous	141,600	143,000	136,000	- 1,400	+ 5,600
Government	169,700	170,700	163,600	+ 1,000	+ 7,100
Federal	25,900	26,400	26,000	- 500	- 100
State and Local Education	87,100	86,000	84,000	+ 1,100	+ 3,100
State and Local Public Administration	57,700	57,300	53,600	+ 400	+ 4,100
Labor-Management Disputes	1,100	700	200	+ 400	+ 900
Manufacturing Production Workers:					
Average Weekly Hours	38.1	37.8	38.3	+ .3	- .2
Average Hourly Earnings	5.21	5.15	4.72	+ .06	+ .49
Average Weekly Earnings	198.50	194.67	180.78	+ 3.83	+ 17.72
Bank Debts to Demand Deposits for Eugene, Portland and Salem (thousands of dollars)	8,774,840	7,848,358	8,069,648	+926,482	+705,192
Building Permits—Selected Oregon Communities (thousands of dollars)	38,026	51,394	40,087	- 13,368	- 2,061
Gasoline Sales for Highway Use (thousands of gallons)	111,450	104,025	98,529	+ 7,425	+ 12,921
Lumber Industry Data for Douglas Fir Region of Oregon and Washington (M Feet):					
Production	541	595	760	- 54	- 219
Orders	537	577	745	- 40	- 208
Inventory—End of Month	1,048	1,085	900	- 37	+ 148
Shipments	578	573	761	+ 5	+ 183
Unfilled Orders	352	393	616	- 41	- 264
Oregon Customs District (thousands of dollars):					
Exports	232,300	220,616	222,719	+ 11,684	+ 9,580
Imports	73,500	86,220	50,406	- 12,720	+ 23,093

1. Data are State totals unless otherwise designated. 2. Preliminary 3. Revised
Sources: Labor Force Data—Oregon Department of Employment; Bank Debts—Federal Reserve Bank of San Francisco; Building Permits—University of Oregon, Bureau of Business Research; Gasoline Data—Oregon State Department of Motor Vehicles; Lumber Data—Western Wood Products Assn.



OPEN-ENDED MATERIALS SYSTEM. Mineral resources are mined, go to a refinery, are made into consumer goods, which are used, discarded, and hauled to a dump where they contribute to environmental degradation.

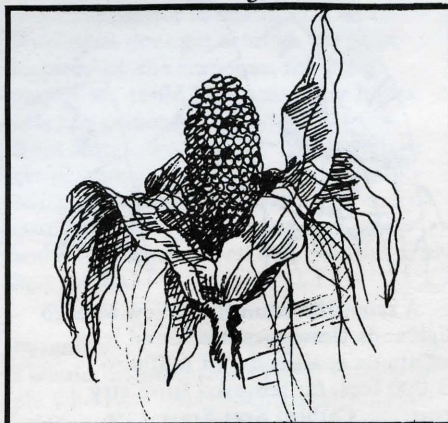
Rush

Earle MacCannel, PSU sociology professor and member of the Pacific NW Historical Film Research Society, is involved in capturing the spirit, place of ghost towns in Oregon on film and video tape. . . . "Why Smaller Refrigerators Can Preserve the Human Race," Appletree Rodden, *Harper's* magazine, Jan. 1975. . . . Four bills providing for extension of Oregon's bottle bill: SB99, covering liquor bottles; SB103, HB2302, to add wine bottles; SB128, standardization of glass containers. . . . Portland: Northeast Food Coop, now restoring building at 1144 N.E. Prescott. Call 281-7979 or 288-7685 to get involved.



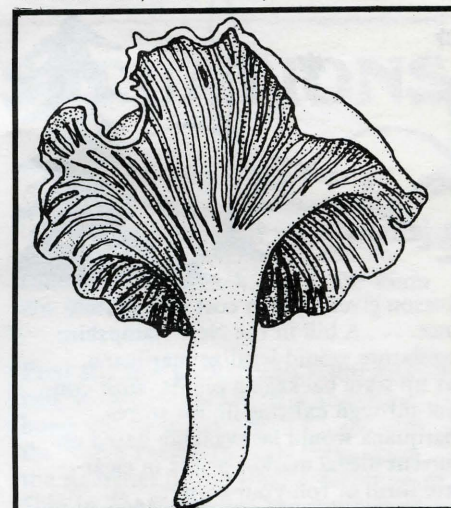
. . . The Youth Project, 1000 Wisconsin Ave., N.W., Washington, D.C. 20007, redistributes monies from large foundations for youth action projects. Write for details. . . . \$225,000 grant from the Rockefeller Foundation to Oregon State University (extension of previous grant) for "alternative approaches to enhanced environmental quality and economic growth." . . . In 1967 there were 4,819,000 colonies of bees in the U.S.; last year there were 4,066,000. . . . American Wind Power Association, 21243 Grand River, Detroit, Mi. 48219. Send \$1 for information. . . . Portland's Tri-Met bus system has shown an overall increase of 20% in ridership since Tri-Met created the downtown fareless square and uniform 35¢ pricing. . . . Eugene, Oregon, has maybe the first community garden specialist, Marshall Landman; a job created by the comprehensive employment training act (fed. gov.) 503-687-5333. . . . The Atomic Industrial Forum, a non-profit industry association funded by nuclear manufacturers and utilities, is embarking on a million-dollar PR plan to sell nuclear power (Senator Gravel newsletter). . . . "Do It Yourself Solar Heating for

Swimming Pools" is distributed free by the Copper Development Assoc. Inc., 405 Lexington Ave., New York, N.Y. 10017. . . . "Intermediate Technology, the appropriate tool is neither primitive nor hopelessly sophisticated." E.F. Schumacker, *Center* magazine, Center for the Study of Democratic Institutions, Box 4068, Santa Barbara, Ca. 93103. . . . Marboro Books Inc., 205 Moonachie Rd., Moonachie, N.J. 67074, is a book clearinghouse; lots of good cheap titles. Write for publications list-free. . . . INDEX, Environmental Energy Lab, P.O. Box 694, Port Townsend, Wn. 98368, is proposing an experimental research project on solar and wind power in the Olympic Peninsula area. . . . A recent Interstate Commerce Commission tally revealed that applications are now pending to abandon 6,665,350 miles of rights of way (train) in 45 states. . . . In a recent ad hoc survey of physicians in the Washington, D.C., yellow pages, it was found that 1 out of 10 was not licensed to practice medicine in D.C. . . . Portland General Electric is experimenting with seeding clouds around Bend, Oregon, to increase snow pack. . . . The Marylhurst Education Center, Marylhurst, Or. 97036; 636-8141, is now offering various ad hoc and credit courses. Exciting things afoot there (see also Agriculture). . . .



Exxon exploring for uranium deposits in Lake County, Oregon. . . . Oregon Legislature HB2076-2081 would extend tax breaks to recycling businesses. . . . The L.A. police special tactics force (special weapons and tactics force) is preparing 500 supervisors and 7,200 police for possible food riots. . . . NSF grant of \$93,400 to Michigan State University to determine if wind energy can support the electric power needs of a small municipal utility. . . . Meth-

ane Bus: Don and Judy Moser travel around the country in their methane-powered bus giving talks, sharing, showing how it works. c/o Vern Moser, 525 Davis Ave., Glendale, Ca. 91201. . . . *Journal of the 4th World*, 275 Kings Rd., Kingston, Surrey, United Kingdom. \$5/yr. surface mail. On simplification of living, pollution, problems of militarism. . . . A laser employing gamma rays (grasser) which could be used for power transmission in space, or as a death ray, is under development in both the U.S. and the U.S.S.R. (*Future Report*). . . . First solar heated and cooled home in New Hampshire now under construction. For information write to: Total Environmental Action, Church Hill, Harrisville, N.H. 03450.



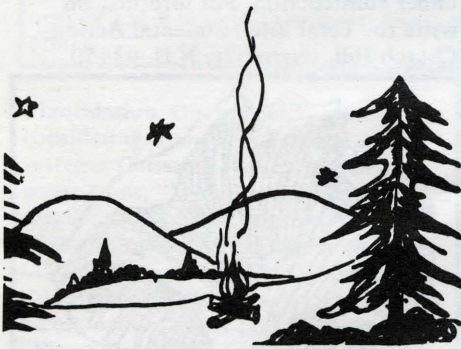
. . . Simple solution for carrying capacity transportation using modification of standard bicycle. Plans: Dar Es Salaam Liberation Support Group, P.O. Box 2099, Dar Es Salaam, Tanzania. . . . The John and Alice Tyler Ecology Prize (of \$150,000) this year went to Ruth Patrick, chairwoman of Philadelphia Academy of Natural Science, for her research in water studies. . . . The Union for the Conservation of Nature has estimated that about 10% of our global flora must now be considered threatened with extinction. . . . Solar Energy Index, a list of the solar energy collection of the Arizona State University library. \$8 from Arizona State U. Library, Room 257, Science Engineering Reference Service. Tempe, Arizona 85281. . . . 15% fewer blacks nationally in the 1974-75 class than in 1973-74 class. . . . "Dung Ho," in *Mechanical Engineering*, Nov. 1974,

Continued on page 14

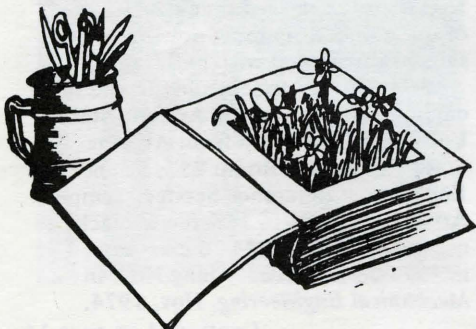
Rush

Continued from Page 13

p. 45. University of Wisconsin—Madison research team working on a microbial fermentation process to convert large amounts of animal wastes to methane gas and fertilizer. . . . "The Changing Role of Government in the Subdivision and Partitioning of Land in Oregon," \$3, and "Compensatory Land Use Regulations, Proposals, Issues and Questions," \$3, just-published reports of: Bureau of Governmental Research and Service, University of Oregon, Eugene, Or. 97403. . . . The U.S. Forest Service in Oregon is expected to close more campgrounds this summer, in addition to the 55 closed last year.



Reason given: rise in cost of maintenance. . . . A bill in the New Hampshire legislature would legalize marijuana, set up state packaging plants, with control through existing liquor stores. Marijuana would be available based on current illegal market prices in cigarette form or roll-your-own. . . . A Pacific Group will assist people to form intentional communities. Associated with Teramanto, an existing low energy style community: James Brumbaugh, 947 Broadway E., Seattle, Wa. 98102, 206-325-5293. . . . "A Mendocino Husbandman," Paul Doerr, P.O. Box 1444, Vallejo, Ca. 94590. A mimeo newsletter: hints, exchanges of how-to-do-its, farming, sufficiency, 25¢ (my copy kind of hard to read).

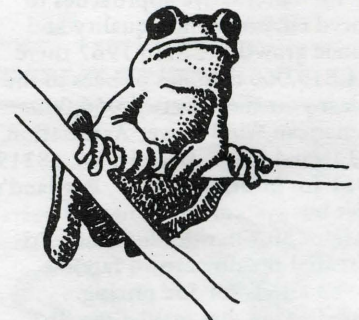


. . . Translucent fiberglass, designed specifically for solar energy transmission, weighing 2 pounds per sq. ft, compared to double strength glass at 1.6 lbs. per sq. ft. Kal-Lite Division, Kalwall Corp., 1111 Candia Rd., Manchester, N.H. 03103, 603-627-3861. . . . President Ford's proposed energy policies would increase the average family's fuel bill about \$250 a year. . . . Oregon Graduate Center, Beaverton, Or., received a \$1,250,000 grant from Weyerhaeuser to make trees from cells.



. . . A scientific team from New Mexico Highlands University has found lead pollutants at altitudes of 6,500 to 13,000 feet, far removed from city areas. . . . Catbird Seat Bookstore, 1231 S.W. Washington, Portland, Or., has lots of how-to, whole earth, Dover, carefully and astutely collected literary volumes, many of the things mentioned in *Rain*. . . . Monfort of Colorado, Inc. (world's largest cattle feeder) is planning to utilize 450,000 dry tons of manure its cows produce every year for the generation of 4 million cu. ft. of bio-gas per day (enough heat for 12,000 to 15,000 homes). . . . Bantam Books will soon publish a guide to the

use of science fiction in classrooms. . . . International Food Information Service, Farnham House, Farnham Royal, Slough, United Kingdom. Providing monthly abstracts on food economics, bibliographies, new food source research, etc. . . . The first world Comfrey conference was held in Portland, August 1973; livestockmen, agribusiness, nutritionists and researchers from all over the world gave first-hand information of the immeasurable benefits derived from the growing of comfrey for livestock fodder and for human nutrition. . . . Final draft of proposed noise ordinance for Portland is available for public comment from Neighborhood Environment, City of Portland, 2040 S.E. Powell Blvd., 97202, 248-4465.



. . . The Multnomah County Library is publishing a newsletter for the business community explaining its expanded phone referral service. For copies, comments, etc., contact Mrs. Linda Woods, Mult. County Library, 801 S.W. 10th 97205, 223-7201, ext. 62. . . . Wings Resource Center, a proposal for an information referral center (like a stationary Seattle yellow pages of re-

sources and services) is being circulated by Ron Long, 5003 12th N.E., Seattle, Wn. 98105. . . . Bitterroot Films, Hammond Arcade Bldg., Missoula, Montana 59801, produces, distributes, excellent environment/ecology films. . . . Open Door, a musical montage radio program, produced by Bud Frimoth, P.O. Box 25366, Portland, Or., concerned with social issues, including the environment, can be heard on KINK at 9 a.m. Sunday and KGW at 10 a.m. Sunday. Tapes and scripts available. . . . A film is being produced by Ron Finne on alternative transportation in the Eugene area. . . . Dept. of Urban Planning, University of Oregon, is preparing a 60-80 page guide to environmental assessment in the state of Oregon; directed especially at planners, but also for general public. Also they are, along with the Eugene Water and Electric Board, doing a study of the implications of growth in the Eugene area on living patterns. Contact William Clark. . . . Special issue on Ener-

gy, *Skeptic* #5. Forum for Contemporary History, 812 Anacapa St., Santa Barbara, Ca. 93101, \$1.25. General, some good essays. . . . National Academic Games, P.O. Box 214, Newhall, Ca. 91322. Range of learning games, government, social studies, math, geography, history. Looks interesting but prices weren't included in brochure we received. . . . Some video newsletters: *Midwest Video News*, WIDL Video, 587 5875 N. Lincoln, Ill. 60659, \$4/yr. — *Blue Sky*, P.O. Box 1773, Boulder, Colo. 80302, \$5/yr. (Rocky Mtn. states) — *Philadelphia Cable News*, 1223 W. Jefferson St., Philadelphia, Pa. 19122. . . . In a recent survey in the Eugene area, 75% of the people surveyed said they would be using their autos less; 60% said we should lessen our dependency on the automobile. . . . Forestry update: Forestry extension, School of Forestry, Oregon State U., Corvallis, Or. 97331. Especially for wood lot owners and loggers. Tree research. Free. . . . Environmental

Organizations Directory '75, U.S. Environmental Protection Agency, 1200 6th Ave., Seattle, Wa. 98101. Annotated. Supplements last month's *Rain* inventory of groups. Or., Wa., Id., Alaska, & B.C. Free. . . . Sharing Smaller Pies. Tom Bender. 760 Vista Av., S.E., Salem, Or. 97302. One of the best beacons of what to do now energy consciousness. Highly recommended. . . . Vernal Equinox Celebration, April 5, Living Systems Institute, 503-636-8141 for details. . . . Federal Land Use Planning Conference, N.W. School of Law, Lewis & Clark College, March 20, 1975. Cascade holistic economic consultants, 3544 S.E. Washington, #6, Portland, Or. 97214. 233-0544. Public interest consultant firm just starting. Economic analysis in forestry, geology and urban development. . . .



POSITIONS-SITUATIONS

Limesaddle

Very interesting. I put a request for an address of *Limesaddle* here in January issue. So far I've gotten nine responses all with the correct answer, including one from Geroe of *Limesaddle*; as it turns out, *Limesaddle* was on our mailing list under "Communities Magazine." Geroe wrote saying he's still interested in an alternative education network. Word sure does get around. We were inspired by the response, thinking maybe we could have scavenger hunts offering prizes to the winners. Questions like: anyone know where we can get nineteenth century pre-technology texts, inventions? or what is the energy cost difference between using pencils and a high quality pen or a cheapie pen? Any takers?

Pyramids

I would be interested to hear from people who have experimented with pyramids. Bob Philips, 2009 N.E. Brazee, Portland, Or. 97212

Teramanto

10218 145th S.E.
Renton, Wa. 98055

New communal co-op near Seattle has room for others to work part/full time on new buildings, organic gardening, remodeling, etc. Construction to incorporate solar water heating, heat pumps, etc.

Wilson Clark (author of *Energy for Survival*) is working on a book about the need for organic diversified agriculture in the U.S. Send ideas, etc., to Hidden Valley Ranch, Rt. 2, Cle Elum, Wn. 98922.

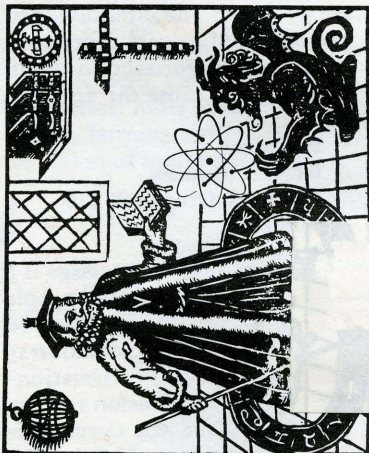
Fred and Bee Lackaff and Kahn Malony will, with Greenpeace Ship and other boats out of Vancouver B.C., sail into the North Pacific to draw focus upon the slaughter of the whales. Greenpeace Ship in Vancouver has the support of the Canadian government and Bob Hunter of the *Vancouver Sun*, and the project will be coordinated in Vancouver. All boats who wish to participate are welcome. The intention is to organize a Pacific coast coordinating center here in Portland to channel feedback and cause the desired effect. Contact:

Pat Jones
0430 S.W. Miles
Portland, Oregon 97219
246-2221

As important as the message is a vehicle to get the message to the people—to increase communication between groups and allow information to flow freely. I propose the formation of a cooperative distribution system whereby publications like the *Oregon Times*, *Willamette Week*, and *Rain*, as well as posters, flyers, etc., will reach many more people if interested.

CALENDAR

- Feb. 28-Mar. 2 **Schools Within Schools Conference.** San Francisco. For details: Columbia Education Center, 5323 S.E. 47th, Portland, Or. 97206.
- Mar. 3-7 **Environmental Education Training Conference** at Cispus Environmental Center. Contact: Ernie McDonald, U.S. Forest Service, P.O. Box 3623, Portland, Or. 97208.
- Mar. 4-May 13 **Landscape Planting Course.** Western Forestry Center, 4033 Canyon Rd., Portland, Or. 97221, 228-1367. \$15.
- Mar. 6-8 **Scientific Behavior Control Symposium Series.** Reed College, Portland. B.F. Skinner and others. Call 771-1112 for information.
- Mar. 6-8 **Oregon Community Education Assoc. Annual Conference.** Eugene Hotel. Information: OCEA, 1724 Moss St., Eugene, Or. 97403
- Mar. 9-12 **Army Energy-Environment Conference and Exposition** for solving energy problems facing army facilities. Details: Col. Robert D. Worthen, American Defense Preparedness Assoc., Union Trust Bldg., 740 15th St., N.W., Washington, D.C. 10005.
- Mar. 12 **Transplantation.** Spare Parts for People. Public science lecture series. 7:30 p.m. OMSI. Call Mike Houck, 248-5942 for information.
- Mar. 13 **Mathew Solar House Analysis; progress report John Reynolds.** Seminar, University of Oregon, 12:30 p.m. Graduate school lounge.
- Mar. 14-16 **National Wildlife Federation 39th Annual Meeting.** Details: Thomas L. Kimbell, National Wildlife Federation, 1412 16th St., N.W., Washington, D.C. 20005.
- Mar. 15-19 **Curriculum Action for a Crisis Society.** New Orleans. Association for Supervision and Curriculum Development, 1701 K St., N.W., Washington, D.C. 20006.
- Mar. 15 **Wilderness Workshop.** Portland area. Sponsored by Oregon Wilderness Coalition and OEC. Call Peter Davis (227-3157); Maria Haack (646-5720) or Bruce Kegg (232-7620).
- Mar. 16-19 **Wildlife Management Institute Annual Conference.** "Adjusting Consumptive Demands to Resource Capabilities." Pittsburg. Contact Wildlife Management Institute, 1000 Vermont Ave., N.W., 709 Wire Building, Washington, D.C. 20005.
- Mar. 20-24 **National Science Teachers Association Annual Meeting.** Los Angeles. Details from: NSTA Convention, c/o Grosch Trucker Warehouse, 15319 Carmenita Rd., Santa Fe Springs, Ca. 90670.
- Mar. 24 **Oregon Mycological Society Meeting.** 7:30 p.m. Waverly Masonic Temple, 3536 S.E. 26th, Portland.
- Mar. 24-29 **Fairbanks, Alaska, Teachers Workshop on the Oil Industry in Alaska.** Alaska Oil and Gas Assn., 308 G St., Suite 221, Anchorage, Alaska 99501.
- Mar. 28 **Metropolitan Environmental Education Council Monthly Meeting.** Call Yvonne Weber, Western Forestry Center, for place, etc. 228-1367.



ENVIRONMENTAL EDUCATION CENTER
 Portland State University
 PO Box 751
 Portland, Or. 97207

Address Correction Requested

NON-PROFIT
 ORGANIZATION
 U.S. POSTAGE
 PAID
 PORTLAND, ORE.
 PERMIT NO. 770