

10-7-2020

## Oregon's Population Estimates Program

Huda Alkitkat  
*Portland State University*

Portland State University. Population Research Center

Follow this and additional works at: [https://pdxscholar.library.pdx.edu/prc\\_pub](https://pdxscholar.library.pdx.edu/prc_pub)



Part of the [Demography, Population, and Ecology Commons](#), and the [Urban Studies and Planning Commons](#)

Let us know how access to this document benefits you.

---

### Citation Details

Alkitkat, Huda and Portland State University. Population Research Center, "Oregon's Population Estimates Program" (2020). *Publications, Reports and Presentations*. 42.

[https://pdxscholar.library.pdx.edu/prc\\_pub/42](https://pdxscholar.library.pdx.edu/prc_pub/42)

This Presentation is brought to you for free and open access. It has been accepted for inclusion in Publications, Reports and Presentations by an authorized administrator of PDXScholar. Please contact us if we can make this document more accessible: [pdxscholar@pdx.edu](mailto:pdxscholar@pdx.edu).

# Oregon Population Estimates Program

**October 7, 2020**



Huda Alkitkat, PhD  
Population Research Center  
College of Urban and Public Affairs

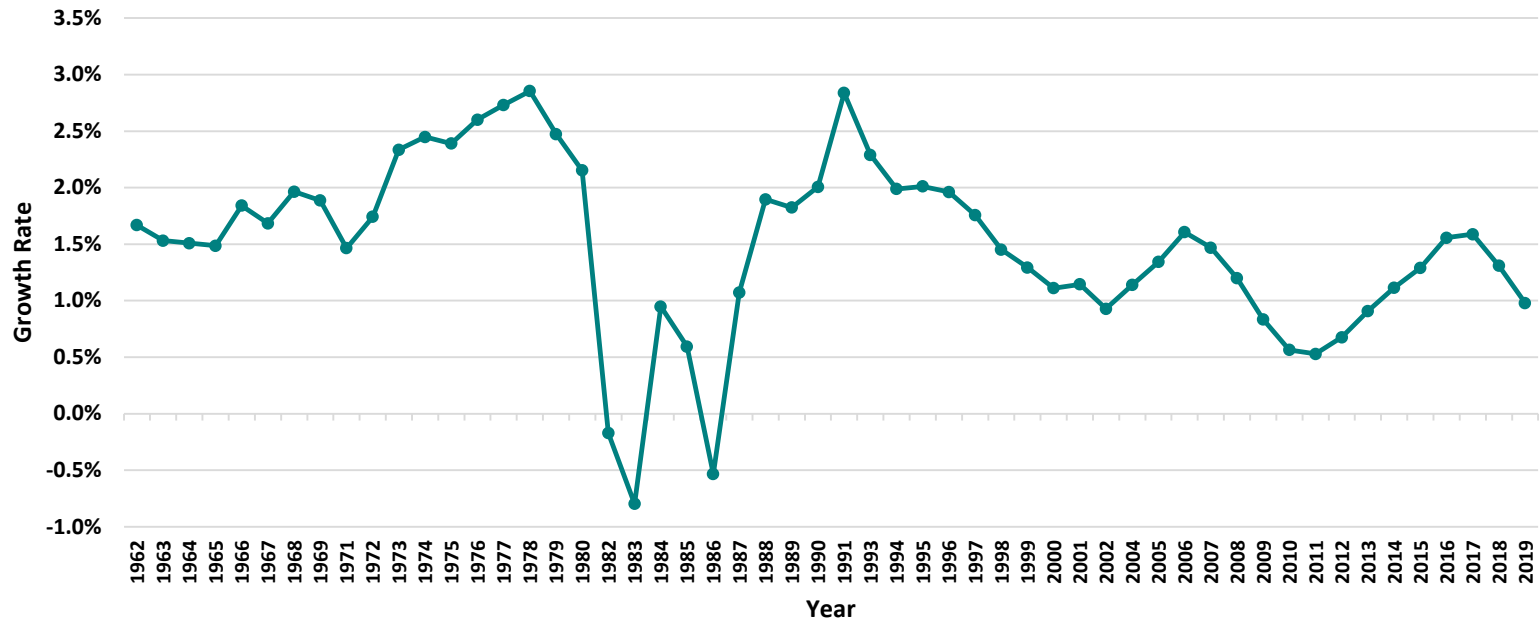


# Oregon Population Estimates Program

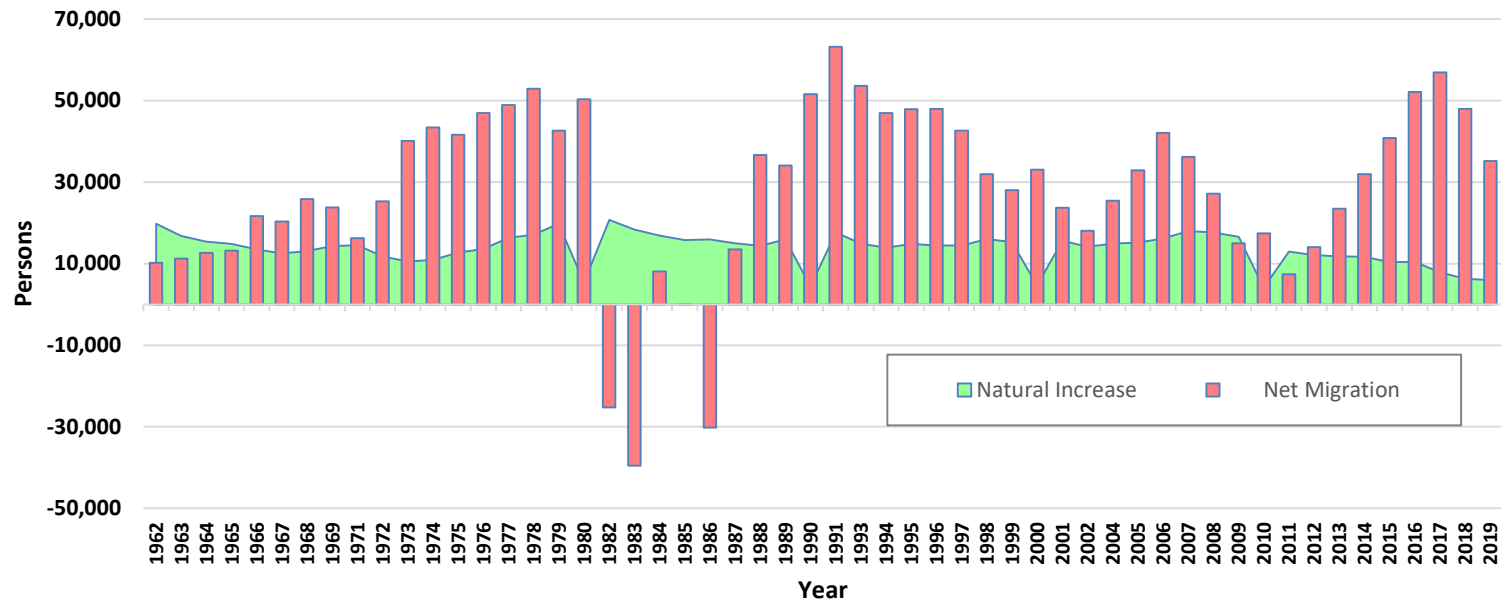
## Overview

- Population estimates are prepared as of July 1 of each year.
- Preliminary estimates are released on November 15<sup>th</sup> each year
- Certified estimates are posted on December 15.
- All residents of Oregon's cities, counties, and unincorporated areas are included in the annual population estimates.
- To develop accurate population estimates, we work closely with state, county, and city officials. We request annual information from them and invite their review of our methods and estimates

# Annual Population Growth Rates for Oregon



# Components of Oregon's Annual Population Change



# Participation in the 2020 Census Operation

Transitory Location (TL)  
and Group Quarters (GQ)  
Address for the 2020  
Census

## 2020 Count Review

- The Oregon Population Estimates Program represents the State of Oregon in the Federal State Cooperative for Population Estimates (FSCPE)
- As part of the Census 2020 planning efforts, the U.S. Census Bureau (USCB) collaborated with the (FSCPE) members to update the GQ and TL address list so that the 2020 Census will include the most current information regarding GQs and TLs.
- A program designed to enable representatives from each state to contribute directly to the quality of the 2020 Decennial Census counts.
- The specific goal of the 2020 CR is to identify missing housing units (HUs) and missing or misallocated large Group Quarters (GQs) and correct these within the time and resource constraints of the overall 2020 Census schedule