

1-31-1996

Bridgeton Neighborhood Plan Action Charts: Adopted by Resolution Number 35491

Portland (Or.). Office of the City Auditor

Follow this and additional works at: https://pdxscholar.library.pdx.edu/oscdl_cityarchives



Part of the [Urban Studies Commons](#), and the [Urban Studies and Planning Commons](#)

Let us know how access to this document benefits you.

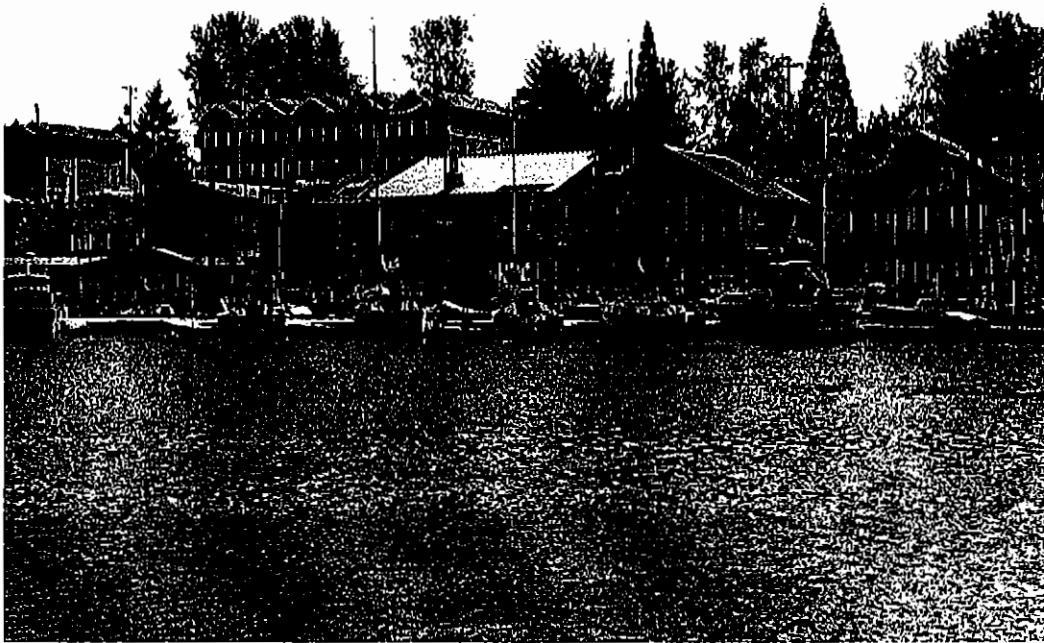
Recommended Citation

Portland (Or.). Office of the City Auditor, "Bridgeton Neighborhood Plan Action Charts: Adopted by Resolution Number 35491" (1996). *Portland City Archives*. 54.

https://pdxscholar.library.pdx.edu/oscdl_cityarchives/54

This Report is brought to you for free and open access. It has been accepted for inclusion in Portland City Archives by an authorized administrator of PDXScholar. Please contact us if we can make this document more accessible: pdxscholar@pdx.edu.

Action Charts From Adopted Bridgeton Neighborhood Plan



Resolution No. 35619



November 1997
City of Portland
Bureau of Planning
Portland, Oregon



Action Chart: Housing and Business

#	Actions	Time				Implementors
		Adopted with Plan	On-going	Next 5 Yrs	6 to 20 Yrs	
PROJECTS						
H1	Develop a plan to encourage middle income and long-time residents to remain in the neighborhood. This could include such ideas as sharing costs and using neighborhood expertise and skills to upgrade private homes and local infrastructure.			x		BNA
H2	Encourage the construction of a public dock for public access to the river from the dike. Encourage owners and developers to work in cooperation with the Parks Bureau, the Marine Board and other interested agencies.			x		BNA, Owners, PDC, other public funding agencies
PROGRAMS						
H3	Encourage developers of large projects to include a mixture of housing, commercial, moorages, and restaurants in their projects.		x			BNA, BOP
H4	Support types of businesses identified in Appendix E.		x			BNA
H5	Seek incentives to encourage businesses identified in Appendix E to locate within Bridgeton.		x			BNA

Note: Action Charts were approved by Portland City Council by resolution. They are a starting place. All actions have an identified implementor. They were adopted with the understanding that some will need to be adjusted and others replaced with more feasible proposals. Identification of an implementor for an action is an expression of interest and support with the understanding that circumstances will affect the implementation leader's ability to take action.

Action Chart: Neighborhood Design

#	Actions	Time				Implementors
		Adopted with Plan	On-going	Next 5 Yrs	6 to 20 Yrs	
	PROJECTS					
H6	<p>Prepare a street lighting plan for Bridgeton. Consider the following:</p> <ul style="list-style-type: none"> a. Unified architectural design in keeping with the riverfront/northwest neighborhood character; b. Ornamental lights with shaded fixtures; c. Capital and operating costs; d. Glare; and e. View obstructions. 			x		BNA, PDOT
H7	<p>Create gateways into the neighborhood at major intersections.</p> <ul style="list-style-type: none"> a. As a part of the transportation concept plan, consider gateways at Gantenbein and Marine Drive. b. When new intersections are created, consider gateways as a part of the engineering design element. c. Develop a design concept for each gateway. d. Determine method of funding, ownership, construction and maintenance, including ways of dealing with vandalism. 			x		BNA
H8	Identify special or historic structures in Bridgeton and seek ways to retain them.			x		BNA
H9	<p>Improve the streetscape on the dike by:</p> <ul style="list-style-type: none"> a. Installing street lighting in keeping with the neighborhood character. b. Considering the addition of any or all of the following: street trees, benches, drinking fountains, banners, hanging baskets, street signs, awnings, wall colors and materials, business signs, and ornamental plantings in cement holders. c. Considering alternatives to curbs, gutters and sidewalks. d. Developing guidelines for the placement and style of mailboxes, dumpsters, other trash receptacles, and recycling bins. e. Encouraging owners with small open areas along Bridgeton Road unusable for parking to be used for public use. 			x		PDOT, BNA, Developers, FOT, Owners

Action Chart: Neighborhood Design Con't

#	Actions	Time				Implementors
		Adopted with Plan	On-going	Next 5 Yrs	6 to 20 Yrs	
	PROGRAMS					
H10	Work with developers to ensure that new developments in old Bridgeton are designed and built only to the 45' allowed under the Mixed Commercial zone.		x			BNA
H11	Encourage developers to include representatives of the neighborhood association early in their development design process.		x			BNA
H12	Work with developers and builders to ensure design, lighting and landscaping which is in character with the neighborhood and which integrates in a cohesive manner with the neighborhood, the multi-use character of the street, and the river.		x			BNA

Action Chart: Transportation and Public Utilities

#	Actions	Time				Implementors
		Adopted with Plan	On-going	Next 5 Yrs	6 to 20 Yrs	
	PROJECTS					
T1	<p>Prepare a "Transportation Network Concept Plan" for the Bridgeton neighborhood. Include the following elements:</p> <ul style="list-style-type: none"> a. Pedestrian and bicycle improvements throughout the neighborhood. b. Concept plan for new streets in west Bridgeton. c. Connections between east and west Bridgeton. d. Connections between the internal roadway system in west Bridgeton and North Marine Drive west of I-5 near the Expo Center. <p><i>See pages 51 through 58 for more information on this action.</i></p>			x		PDOT, BNA, ODOT
T2	<p>At the time of development of the property west of North Haight Street, construct the new street to be in character with Bridgeton Road plus pedestrian improvements. Include the following:</p> <ul style="list-style-type: none"> a. Require dedication of a full width standard local street for the connection between east and west Bridgeton. b. Require the developer to construct the street with a 50' landscaped island, pocket park, or other similar traffic control device approved by the City Engineer, as well as sidewalks and bicycle improvements that meet the 40-Mile Loop Trail standard. c. Allow access to bicycle, pedestrian, and emergency vehicle traffic only. d. Consult with the Fire Bureau on appropriate configuration for emergency vehicular access. e. Maintain the 20' curb to curb width of Bridgeton Road off the dike as it transitions to the new road system. <p><i>See page 52 for more information on this action.</i></p>			x		PDOT
T3	<p>Involve the Bridgeton Neighborhood Association in any discussions of connecting Bridgeton Road to the developing area in the west side of the neighborhood.</p> <p><i>See pages 52 and 53 for more information on this action.</i></p>		x			PDOT



Action Chart: Transportation and Public Utilities

#	Actions	Time				Implementors
		Adopted with Plan	On-going	Next 5 Yrs	6 to 20 Yrs	
T4	<p>Transportation capital improvements:</p> <ol style="list-style-type: none"> 1. Marine Drive between I-5 and NE 13th <ol style="list-style-type: none"> a. Widen Marine Drive to three lanes prior to the intersections with Gantenbein and Bridgeton Road to include left-turn lanes in the eastbound direction. b. Construct a safer, wider pathway on both sides of Marine Drive. c. Reduce local and eliminate through truck traffic. d. Make crossing and using the street safer for pedestrians and bicyclists. 2. Intersection of Bridgeton Road and Marine Drive: Reconfigure the intersection east end of Bridgeton Road as a "T" intersection, the exact design to be determined by PDOT staff in concert with the community and property owners adjacent to Marine Drive. 3. Intersection of Gantenbein Road and Marine Drive <ol style="list-style-type: none"> a. Reconfigure the intersection as a "T" intersection, the exact design to be determined by PDOT staff in concert with the community and property owners adjacent to Marine Drive. b. Configure the intersection so as to eliminate use of Faloma Market parking lot by through traffic. 			x		<p>PDOT</p> <p>PDOT, BES, Developers</p> <p>PDOT</p> <p>PDOT</p> <p>PDOT</p> <p>PDOT</p> <p>PDOT, Owners</p>
T5	Institute traffic-calming techniques to discourage unnecessary traffic and reduce traffic speed. Consider also special paving treatments, such as sand-set pavers.			x		PDOT

Action Chart: Transportation and Public Utilities

#	Actions	Time				Implementors
		Adopted with Plan	On-going	Next 5 Yrs	6 to 20 Yrs	
T6	<p>Construct a promenade usable by pedestrians and bicyclists between the end of the current Bridgeton Road along the top of the dike and I-5.</p> <p>a. Link the western end of the promenade with the bike path west of I-5, the anticipated light rail station at the Expo Center, and the bike path to the I-5 bridge.</p> <p>b. Require right-of-way dedication as properties develop or redevelop.</p> <p>c. Limit traffic on the promenade to pedestrian, bicycle and emergency traffic.</p> <p>d. Re-establish the pedestrian and bicycle access to the I-5 bridge from the dike.</p>			x		PDOT, Parks, Developers PDOT, ODOT, Developers ODOT, PDOT
T7	Re-examine the configuration of the I-5/Martin Luther King interchange and the Marine Drive and Vancouver Way intersection as part of the Reconnaissance study of I-5 between the Interstate and Marquam Bridges.			x		ODOT, PDOT
T8	Work with the Faloma Market owners in conjunction with the transportation improvements for the area.			x		BNA, Owners
T9	Study alternative transportation systems for crossing North Portland Harbor. This could include an aerial tram and water taxis.				x	BNA
T10	<p>Prepare a utility plan for Bridgeton.</p> <p>a. Determine the desirability and cost to place utilities underground.</p> <p>b. Survey residents to determine willingness to shoulder the cost of a local improvement district.</p> <p>c. Form local improvement district (LID) if residents vote in favor of doing so.</p> <p>d. Work with Pacific Power and Light to underground the existing utilities.</p> <p>e. Work with present and future developers to ensure conformance with this action.</p>			x		BNA, PDOT, PPL, PC, USW
PROGRAMS						
T11	Maintain the roadway width of Bridgeton Road at 18 - 20 feet.		x			PDOT
T12	Construct sidewalks and curbs only on the south side of Bridgeton Road and where necessary for safety reasons.		x			PDOT, BOP

Action Chart: Transportation and Public Utilities

#	Actions	Time				Implementors
		Adopted with Plan	On-going	Next 5 Yrs	6 to 20 Yrs	
T13	Encourage partnerships between the City and developers for local improvement districts (LIDs) to share the cost of transportation improvements, especially if an area or district-wide transportation need is served.		x			PDOT
T14	Keep moorage parking areas as flexible as possible to allow for maximum parking spaces consistent with road safety.		x			PDOT, Owners
T15	If moorage parking areas are reconstructed, construct them in a manner which contributes to the character of the neighborhood, possibly by using paving materials such as sand-set pavers or materials of varied colors or textures.		x			PDOT, Owners
T16	Continue to work with other agencies and organizations within the Columbia Corridor on the "Columbia Corridor Transportation Study."		x			BNA
T17	As properties along side streets redevelop, improve those streets on an individual basis using creative techniques. <i>See page 53 for more information on this action.</i>		x			PDOT, Owners, FOT

Action Chart: Transportation and Public Utilities

#	Actions	Time				Implementors
		Adopted with Plan	On-going	Next 5 Yrs	6 to 20 Yrs	
T18	<p>Ensure adequate parking for residents, guests and visitors.</p> <p>a. Retain two parking spaces per houseboat.</p> <p>b. Allow new marinas with slips to provide parking spaces in parking structures.</p> <p>c. Consider building a public parking structure in west Bridgeton.</p> <p>d. Encourage shared commercial parking.</p> <p>e. Encourage developers to include adequate parking.</p> <p>f. Ensure that new developments on the south side of Bridgeton Road provide off-street parking.</p>		x			PDOT, BOP, BNA, Owners, Developers, Businesses
T19	Support construction of the south/north light rail transit system.		x			BNA
T20	<p>Improve transit to the area, including the following:</p> <p>a. Better transit coverage on Marine Drive, to nearby industries and adjacent neighborhoods and commercial centers.</p> <p>b. Light rail transit station at or near the Expo Center that can serve Bridgeton residents.</p> <p>c. Pedestrian access to all transit stops.</p>		x			TM, PDOT, Developers, Industries
T21	Encourage all property owners to work together to address access and transportation issues.		x			BNA

Note: Action Charts were approved by Portland City Council by resolution. They are a starting place. All actions have an identified implementor. They were adopted with the understanding that some will need to be adjusted and others replaced with more feasible proposals. Identification of an implementor for an action is an expression of interest and support with the understanding that circumstances will affect the implementation leader's ability to take action.

Action Chart: Environment

#	Actions	Time				Implementors
		Adopted with Plan	On-going	Next 5 Yrs	6 to 20 Yrs	
	PROJECTS: General					
E1	Identify areas and locations in need of additional trees and obtain funding or seek donations of trees.			x		FOT, BNA
E2	Establish native plant salvage, propagation and distribution projects tied to Naturescaping or other native plant education programs.				x	BES, Pvt
E3	Create incentives for property owners to retrofit their sites and moorages with water quality and quantity controls.				x	BES
E4	Establish a neighborhood committee to monitor water quality and other environmental issues.			x		BNA, BES
E5	Identify scenic views as part of the "scenic corridor."			x		BNA, BOP
	PROJECTS: North Portland Harbor and Shoreline Dike					
E6	Prepare a landscaping plan for the riverbank using the Portland Plant List.			x		BNA, DSL, PDD, BES, PPB, Parks
	PROJECTS: Bridgeton Slough					
E7	Prepare a plan, to include each of the following elements, to restore/clean up the Bridgeton Slough, including restoration and maintenance of wildlife, in a biologically sound manner: a. Water quality, b. Water level, c. Siltation, d. Long-term survival of plants, wildlife and non-rough fish, e. Elimination of rough fish, f. Addition of warm water game fish, and g. Control of mosquitoes.			x		PDD, BES, DSL, BNA
E8	Prepare a drainage analysis of Peninsula Drain-age District #2, including the Bridgeton Slough. Prepare drainage and water quality master plan that results in clean water discharges to Bridgeton Slough and North Portland Harbor.				x	PDD, BES, BNA, Metro

Action Chart: Environment

#	Actions	Time				Implementors
		Adopted with Plan	On-going	Next 5 Yrs	6 to 20 Yrs	
E9	Work with developers to design a joint stormwater treatment system which will work in conjunction with the drainage-related elements of the slough.			x		PDD, BOP, BES, DSL, BNA
	PROGRAMS: General					
E10	Work with Peninsula Drainage District #2 on issues of joint concern. a. Encourage the board of directors of the drainage district to include a neighborhood representative on the board. b. Appoint a resident of the Bridgeton neighborhood to sit on the PDD Board of Directors or at least to attend each meeting.		x			PDD BNA
E11	Encourage owners and developers throughout the neighborhood to: a. Create landscaping which adds to the character of the neighborhood and is wildlife-friendly. b. Restrict the use of pesticides, herbicides, or any other chemical exfoliate or environmentally hazardous substances. c. Minimize water use. d. Retain mature trees throughout the neighborhood. e. Plant additional trees and shrubs along Marine Drive in order to form a natural noise, air and visual buffer. f. Use landscape areas to retrofit or provide biofiltration and infiltration of stormwater.		x			BNA, BOP, BES, UFD, FOT, PDOT
E12	Encourage owners to remove blackberries and other non-native plants in areas covered with an environmental overlay ("c" on the zoning maps).		x			BNA, BES, Owners
E13	Encourage owners and developers in areas with no environmental restrictions to add landscape elements which add to the colorful, eclectic character of the neighborhood.		x			BNA
E14	Encourage the participation of households, moorages, businesses, and construction projects in recycling.		x			BES, BNA
E15	Conduct biannual neighborhood clean-up days to remove trash and refuse from environmentally sensitive areas and plant new vegetation.		x			BNA, Owners

Action Chart: Environment

#	Actions	Time				Implementors
		Adopted with Plan	On-going	Next 5 Yrs	6 to 20 Yrs	
E16	Promote the awareness through education of the neighborhood about the unique environment of Bridgeton and the need to maintain it.		x			BNA
	PROGRAMS: North Portland Harbor and Shoreline Dike					
E17	Encourage developers to conserve the unique environment of the dike and the adjacent waterway in the building, landscaping and transportation improvements.		x			BNA
E18	Keep marinas and moorages clean. Ensure that individuals, owners and government agencies protect the river from contaminants, including: a. Raw sewage b. Household chemicals, debris and other items c. Oils and other hazardous materials		x			BNA
E19	Allow new construction of buildings and parking lots only on the south side of the dike.		x			PDD, BOP
	PROGRAMS: Bridgeton Slough					
E20	Implement the restoration plan and results of the drainage analysis.		x			BNA, PDD, BES, Metro

Note: Action Charts were approved by Portland City Council by resolution. They are a starting place. All actions have an identified implementor. They were adopted with the understanding that some will need to be adjusted and others replaced with more feasible proposals. Identification of an implementor for an action is an expression of interest and support with the understanding that circumstances will affect the implementation leader's ability to take action.

Action Chart: Community

#	Actions	Time				Implementors
		Adopted with Plan	On-going	Next 5 Yrs	6 to 20 Yrs	
	PROJECTS					
C1	Work with Portland Public Schools to improve access to the Columbia School playfield for neighborhood residents.			x		BNA, Parks
C2	Encourage the Portland Public Schools to prepare an Impact Mitigation Plan (IMP) for Columbia School. Work with the school district on its IMP.				x	BNA
C3	Establish a granting and funding committee for the neighborhood association.			x		BNA
C4	Form a design committee within the Bridgeton Neighborhood Association.			x		BNA
C5	Set up a neighborhood phone tree to alert residents and businesses to land use cases, meetings, safety concerns and other issues.			x		BNA
C6	Create and update periodically a neighborhood directory.			x		BNA
	PROGRAMS					
C7	Work with the Portland Public Schools to keep Columbia School open: a. As an educational institution and b. As a meeting facility for the neighborhood association and nearby organizations		x			BNA
C8	Should the Portland Public School District decide to sell their property: a. Encourage the district to give the neighborhood association, City of Portland, and/or Metro the option to purchase the playfield for open space. b. Participate in the decision-making process.		x			BNA

Action Chart: Community

#	Actions	Time				Implementors
		Adopted with Plan	On-going	Next 5 Yrs	6 to 20 Yrs	
C9	<p>Port of Portland actions:</p> <p>a. Encourage residents to report noisy airplane overflights to the proper Port of Portland and/or state or federal entity.</p> <p>b. Address airport impacts, including possible air pollution, generated by private, commercial, and military aircraft.</p> <p>c. Work through Bridgeton area representatives to advisory committees to raise important issues with the Port of Portland.</p> <p>d. Update residents of the Bridgeton neighborhood annually on issues of concern.</p> <p>e. Work with the Oregon Air National Guard to address the problems, including air pollution and noise, generated for residents by their daily training flights.</p> <p>f. Work with the East Columbia Neighborhood Association to request the Port to remove the fence around its undeveloped land on Marine Drive opposite the golf course and put it into some type of park or river viewing area.</p>		x			<p>BNA</p> <p>BNA, POP</p> <p>BNA</p> <p>POP</p> <p>BNA</p> <p>BNA</p>
C10	Work with the industrial owners, truckers, and adjacent neighborhood associations on all issues of joint concern.		x			BNA, Pvt
C11	Encourage property owners and tenants to be sensitive to their neighbors regarding lighting, fencing, noise and other things which could affect their neighbors' homes and privacy.		x			BNA

Action Chart: Community

#	Actions	Time				Implementors
		Adopted with Plan	On-going	Next 5 Yrs	6 to 20 Yrs	
C12	Publish each six months an updated list of pertinent numbers, including at least the following: <ol style="list-style-type: none"> a. River Patrol. b. Port of Portland Noise Control Complaints. c. Police Liaison. d. Officers of the Bridgeton Neighborhood Association. e. Officers and staff of North Portland Neighborhood Office. f. Crime Watch Committee. g. Columbia School contacts. h. Advisory committees needing representation from Bridgeton. 		x			BNA
C13	Work with the East Columbia Neighborhood Association to help maintain the 24-acre Arboretum at 6th and Middlefield as a park.			x		BNA

Note: Action Charts were approved by Portland City Council by resolution. They are a starting place. All actions have an identified implementor. They were adopted with the understanding that some will need to be adjusted and others replaced with more feasible proposals. Identification of an implementor for an action is an expression of interest and support with the understanding that circumstances will affect the implementation leader's ability to take action.

Action Chart: Public Safety

#	Actions	Time				Implementors
		Adopted with Plan	On-going	Next 5 Yrs	6 to 20 Yrs	
	PROJECTS					
PS1	Work with city agencies to design a street network that will guarantee emergency access within time standards while maintaining and enhancing the character of Bridgeton.			x		BNA, PFB, PDOT, BOP
PS2	Establish emergency access between Bridgeton Road, Frontage Road, and Marine Drive.				x	PDOT, PFB
PS3	Work with the Oregon Department of Transportation to reduce the impacts of high-intensity lights along the freeway. This might include shielding to eliminate glare and light pollution impacting nearby residents.			x		BNA, PDOT, ODOT, SMB
PS4	Work with trucking companies south of Marine Drive to review the impacts of noise and high-intensity lights on those living north of Marine Drive.			x		BNA, Property Owners, Trucking Interests
PS5	Develop a comprehensive plan to reduce auto theft and stereo theft from parking lots. Enlist the help of persons qualified in this area of expertise.			x		BNA, PPB, NPNO
PS6	Develop a plan for dealing with emergencies which would impact the Bridgeton neighborhood. Include: a. Coordination with adjacent neighborhood associations and commercial/industrial interests. b. A list of meeting places, resources, contacts and escape procedures. c. Creation of a Neighborhood Emergency Team. d. The need to dial 911 first in case of any emergency.			x		PFB, BNA
PS7	Provide street lights which will enhance the streetscape, increase the sense of security, and ensure rapid response by emergency vehicles.			x		BNA, PDOT, PPB

Action Chart: Public Safety

#	Actions	Time				Implementors
		Adopted with Plan	On-going	Next 5 Yrs	6 to 20 Yrs	
	PROGRAMS					
PS8	Re-evaluate annually and improve, if necessary, the Fourth of July plan.		x			BNA, PPB
PS9	Reduce trespassing by posting "No Trespassing" signs.		x			Owners
PS10	Reduce unauthorized use of dumpsters by properly locating and securing them. Maintain dumpsters in a clean, orderly manner.		x			Owners
PS11	Encourage persons involved in Neighbor Watch programs to: <ol style="list-style-type: none"> Meet on an ongoing basis, keep an eye out for each other, and get to know each other. Install lighting in strategic locations on their property. Educate each resident and business owner on the proper response to safety-related situations. 		x			BNA, NPNO
PS12	Support the Multnomah County Sheriff's River Patrol to enforce boating speeds along the channel. Increase the number of warning signs along the harbor.		x			BNA, MCRP
PS13	Assign a police liaison officer to the Bridgeton neighborhood to work with the neighborhood on community policing issues, attend neighborhood meetings and events, and get to know the neighborhood.		x			PPB
PS14	Ensure that each marina contains easily readable address signs for emergency identification visible from land and water.		x			BNA
PS15	Increase the presence of law enforcement officers patrolling: <ol style="list-style-type: none"> North Portland Harbor. Bridgeton community. 		x			MCRP PPB
PS16	Encourage residents and businesses to participate in emergency preparedness planning, training and cooperative efforts to enhance residents ability to respond in emergencies.		x			PFB, BNA

Note: Action Charts were approved by Portland City Council by resolution. They are a starting place. All actions have an identified implementor. They were adopted with the understanding that some will need to be adjusted and others replaced with more feasible proposals. Identification of an implementor for an action is an expression of interest and support with the understanding that circumstances will affect the implementation leader's ability to take action.