

Portland State University

PDXScholar

Criminology and Criminal Justice Faculty
Publications and Presentations

Criminology and Criminal Justice

5-2009

Land Use and Crime Patterns in Coquitlam Detachment

Kathryn Wuschke

Portland State University, wuschke@pdx.edu

Patricia Brantingham

Simon Fraser University

Jordan Ginther

Simon Fraser University

Follow this and additional works at: https://pdxscholar.library.pdx.edu/ccj_fac



Part of the [Criminology Commons](#), and the [Urban Studies Commons](#)

Let us know how access to this document benefits you.

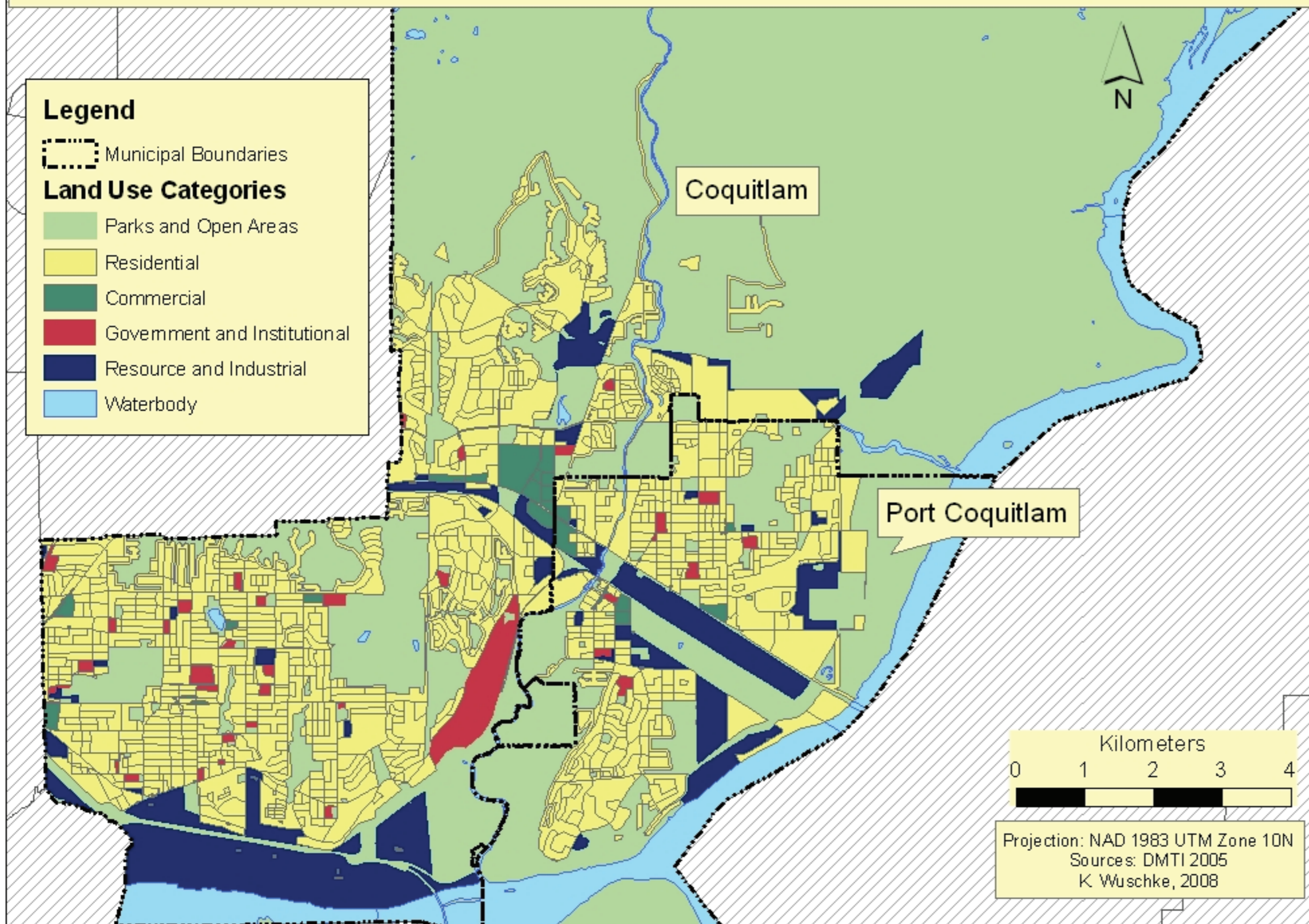
Citation Details

Wuschke, Kathryn; Brantingham, Patricia; and Ginther, Jordan, "Land Use and Crime Patterns in Coquitlam Detachment" (2009). *Criminology and Criminal Justice Faculty Publications and Presentations*. 58.
https://pdxscholar.library.pdx.edu/ccj_fac/58

This Poster is brought to you for free and open access. It has been accepted for inclusion in Criminology and Criminal Justice Faculty Publications and Presentations by an authorized administrator of PDXScholar. Please contact us if we can make this document more accessible: pdxscholar@pdx.edu.

Land Use and Crime Patterns in Coquitlam Detachment

Figure 1: Land Use of Coquitlam and Port Coquitlam



Partners:

- RCMP: Coquitlam Detachment
- City of Coquitlam
- ICURS

Data Sources:

- **Land Use Data:**
 - BC Assessment Association
 - detailed parcel-level data
 - includes lot value and actual use information
 - updated annually
- **Crime Data:**
 - PIRS and BC PRIME events
 - address-level crime event data for Coquitlam RCMP Detachment

Preliminary Results (2005):

- **Macro Level Analysis:**
 - When exploring crime rates per 100 land parcels according to broad land use category, it is clear that **Commercial** and **Civic, Institutional, and Recreational** land uses display the highest rates of all crime types under investigation in both Coquitlam and Port Coquitlam.

- **Micro Level Analysis:**

- When exploring crime by land use sub-category, new patterns emerge:
 - In **Coquitlam**, Single Family Dwellings have the largest counts of residential property crimes, but Multi Family Apartments dominate the rates per 100 units.
 - Coquitlam's 16 shopping centres have high counts and rates of commercial property crimes.

Table 1: Crime Rates by Land Use Category, Coquitlam and Port Coquitlam, 2005

City	Land Uses	Parcel Counts	Crime Rate per 100 Units			
			Violent	Property	Mischief	Drugs
Coquitlam	Residential Land Use	35468	1.46	8.07	6.44	0.82
	Farm Land Use	18	0.00	0.00	5.56	0.00
	Commercial Land Use	1017	24.39	215.44	96.66	7.96
	Industrial Land Use	129	3.10	47.29	11.63	0.78
	Transportation, Communication, Utility	78	0.00	6.41	7.69	0.00
	Civic, Institutional and Recreational	559	54.56	102.15	152.59	20.04
	TOTAL	37269	2.88	15.27	11.11	1.30
Port Coquitlam	Residential Land Use	16366	1.89	11.96	8.26	0.79
	Farm Land Use	82	2.44	10.98	20.73	1.22
	Commercial Land Use	817	15.42	151.29	74.79	4.65
	Industrial Land Use	185	1.08	40.00	7.03	1.08
	Transportation, Communication, Utility	41	0.00	12.20	2.44	0.00
	Civic, Institutional and Recreational	223	28.70	87.00	132.29	21.08
	TOTAL	17714	2.85	19.62	12.92	1.23

Table 2: Residential and Commercial Property Crimes: Top 5 Land Use Sub-Categories, Coquitlam, 2005

Land Use	Units	% Land Use	Total Crimes	Crimes/100 units	% Property Crimes
Residential					
Single Family Dwelling	20145	54.05	1572	7.80	27.63
Strata-Lot Residence (Condo)	9865	26.47	385	3.90	6.77
Multi-Family – Apartment Block	64	0.17	356	556.25	6.26
Single Family Dwelling with Suite	2105	5.65	261	12.40	4.59
Duplex - Single Unit Ownership (s)	797	2.14	65	8.16	1.14
Commercial					
Shopping Centre	16	0.04	711	4443.75	12.50
Stores and Services – Commercial	88	0.24	324	368.18	5.69
Storage and Warehousing – Closed	112	0.30	169	150.89	2.97
Stores and Offices	40	0.107	133	332.50	2.34
Hotel	1	0.00	87	8700.00	1.53