

Fall 2015

Healthy Living Environments

Tina Taeb
Portland State University

Ashley Schahfer
Portland State University

ZGF

Follow this and additional works at: https://pdxscholar.library.pdx.edu/research_based_design



Part of the [Architecture Commons](#)

Let us know how access to this document benefits you.

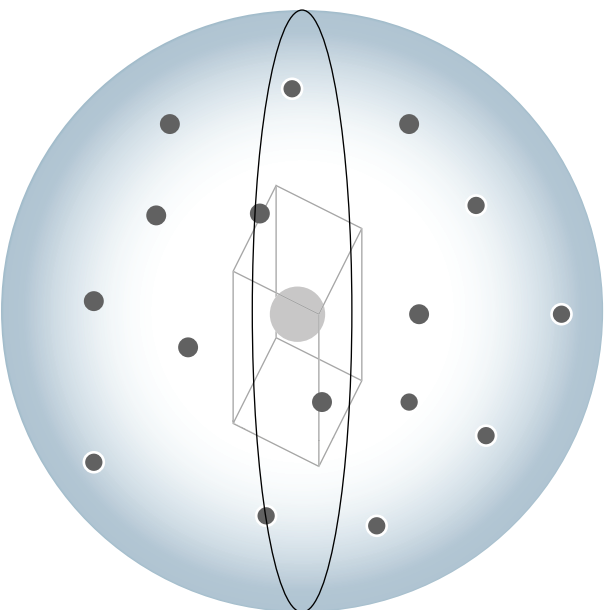
Recommended Citation

Taeb, Tina; Schahfer, Ashley; and ZGF, "Healthy Living Environments" (2015). *Research-Based Design Initiative*. 65.

https://pdxscholar.library.pdx.edu/research_based_design/65

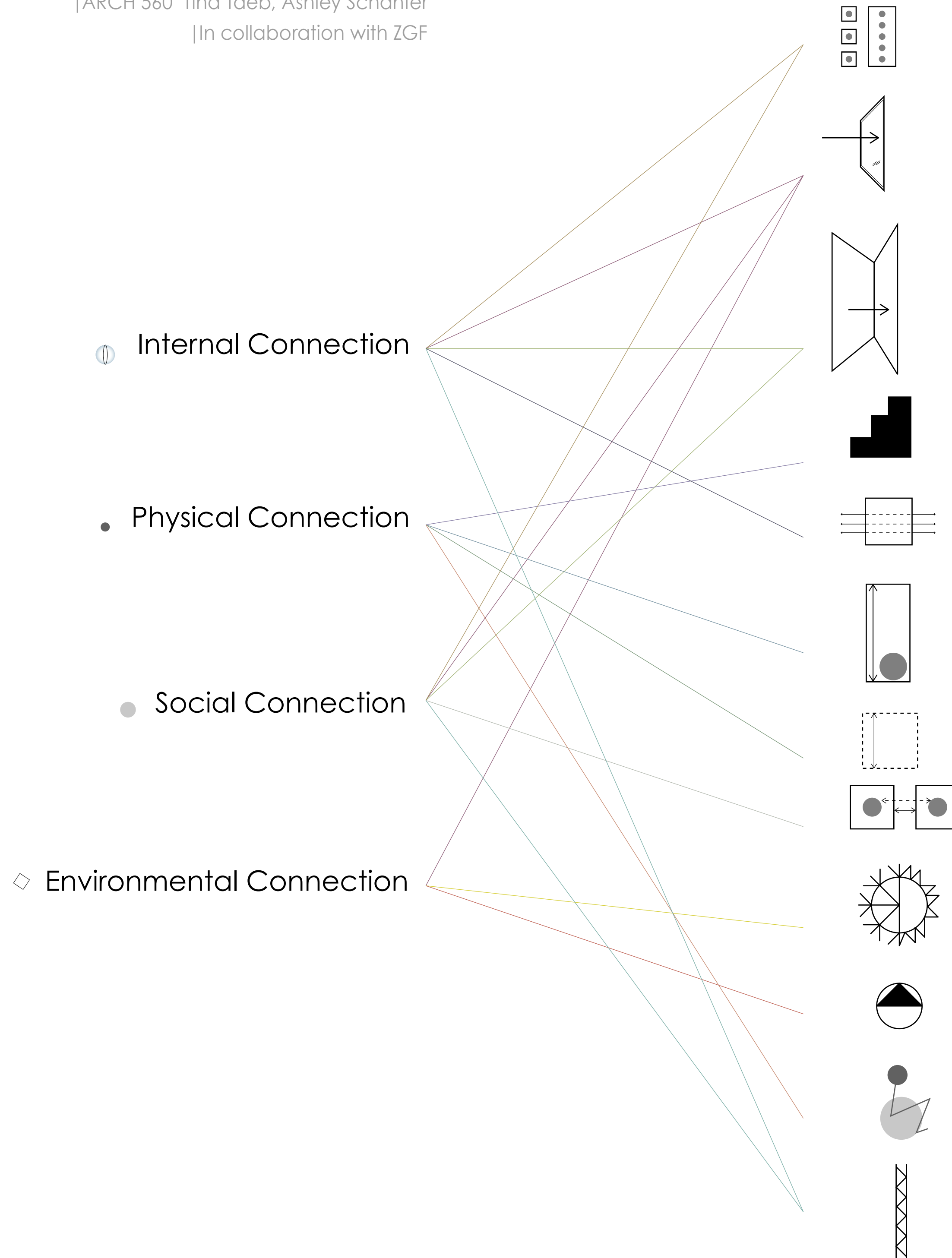
This Book is brought to you for free and open access. It has been accepted for inclusion in Research-Based Design Initiative by an authorized administrator of PDXScholar. Please contact us if we can make this document more accessible: pdxscholar@pdx.edu.

HEALTHY LIVING ENVIRONMENTS

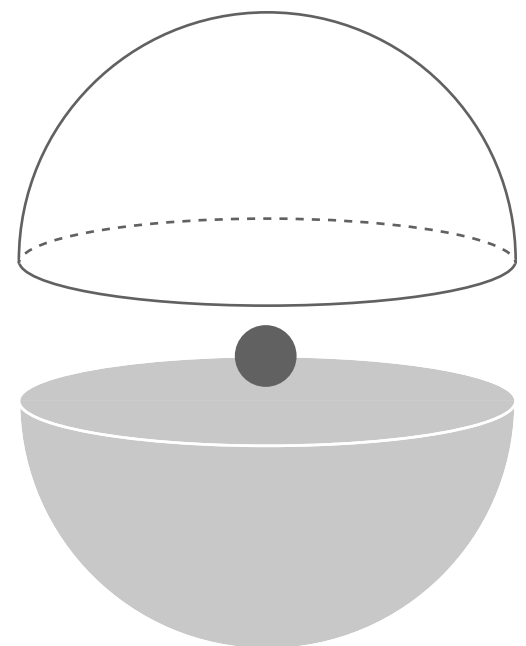
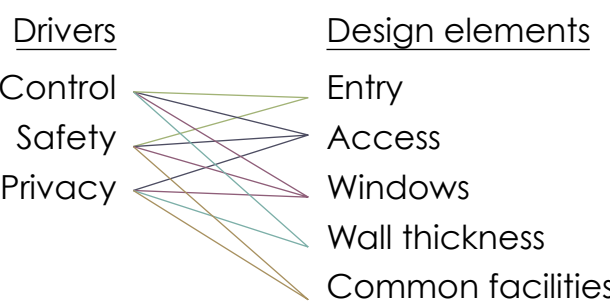


PORTLAND STATE UNIVERSITY ::
SCHOOL OF ARCHITECTURE

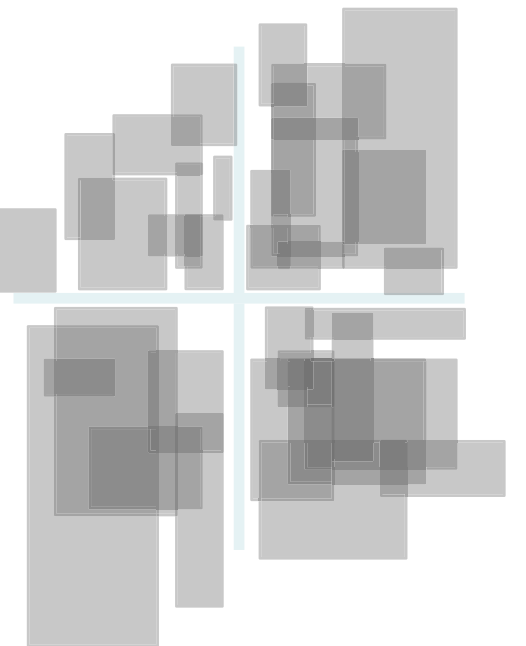
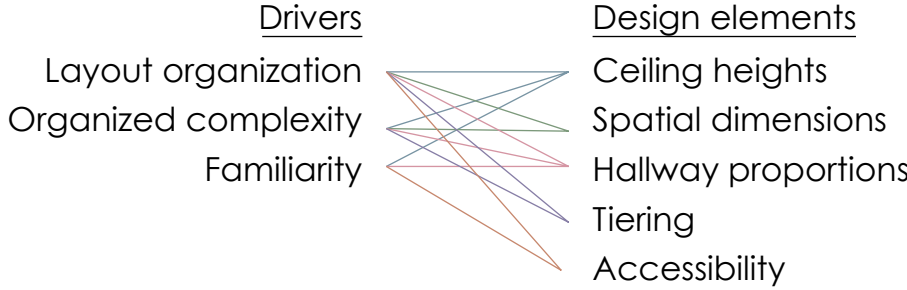
| ARCH 560 Tina Taeb, Ashley Schahfer
| In collaboration with ZGF



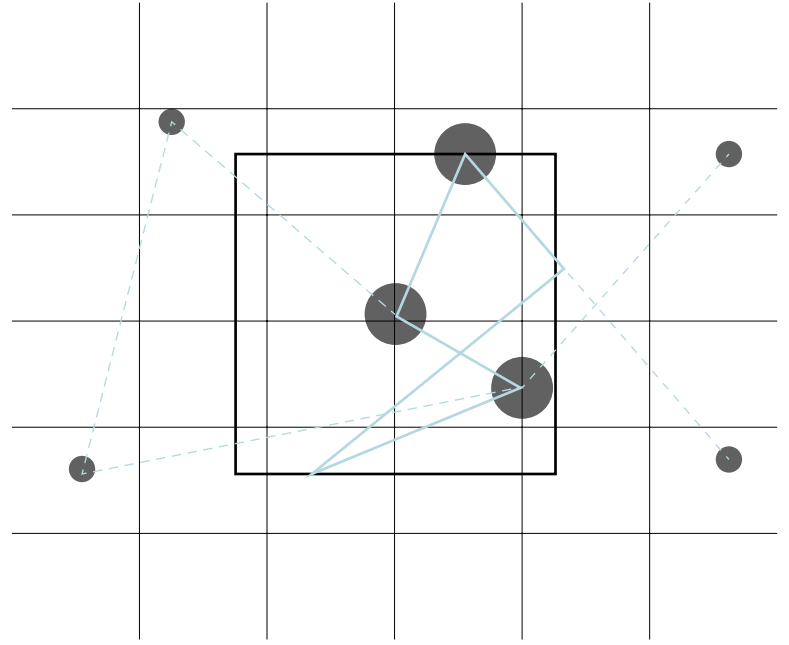
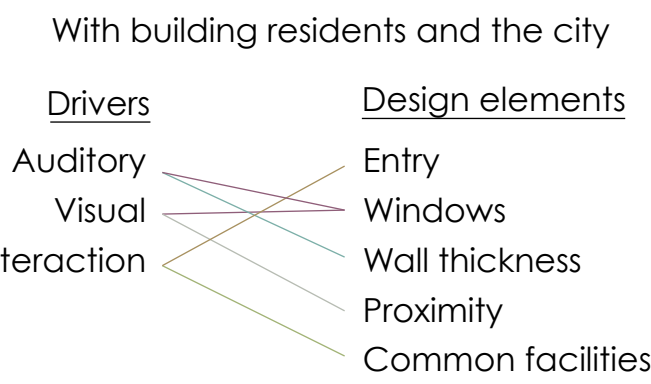
Internal Connection:



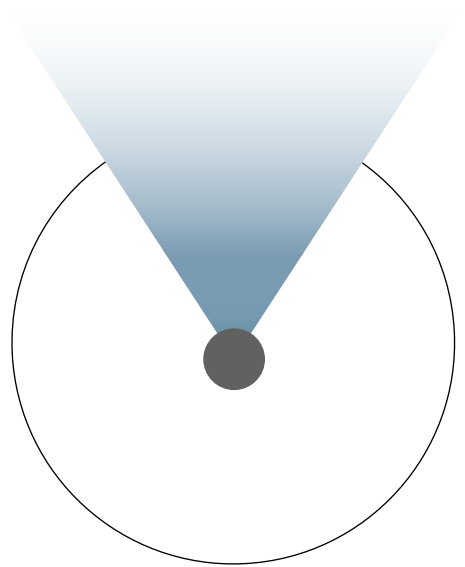
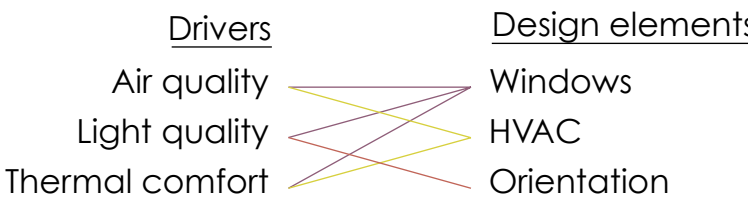
Physical Connection:



Social Connection:



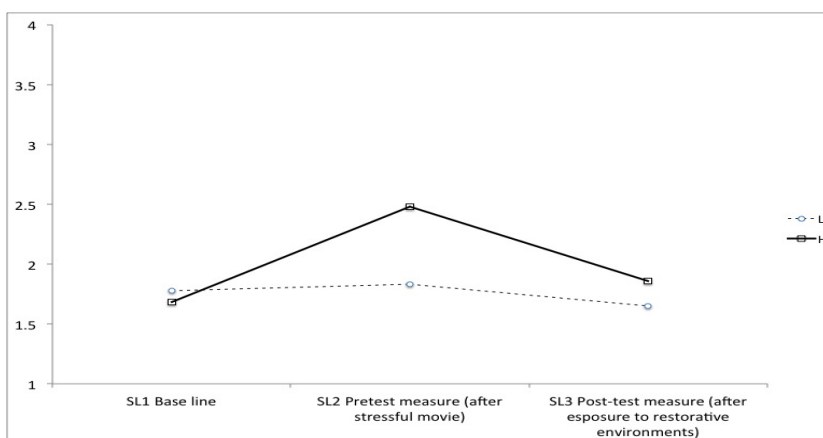
Environmental Connection:



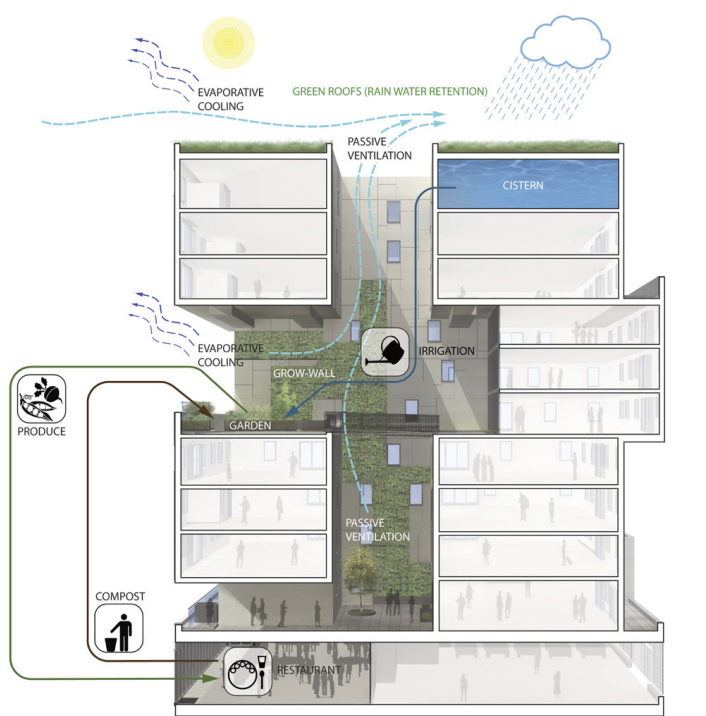
Fruit-Igoe



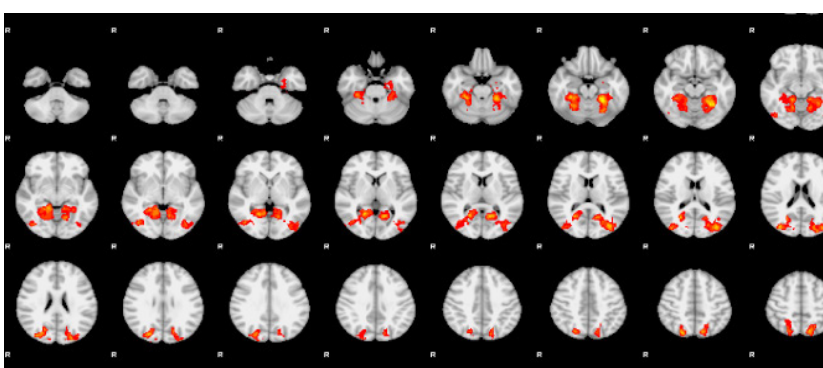
Via Verde, NY



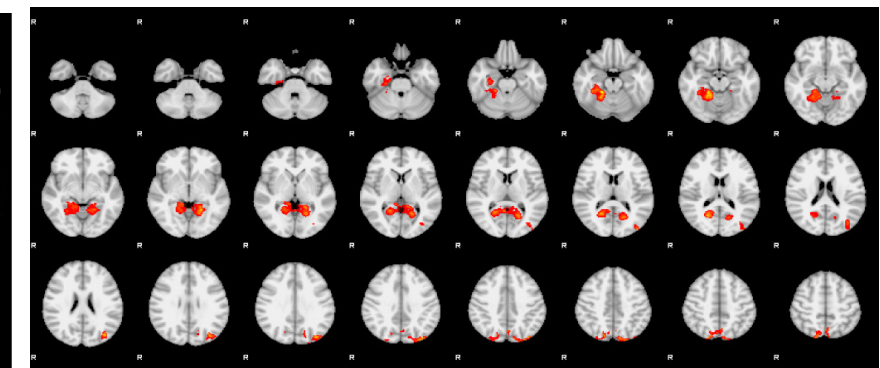
Measures of stress levels between environments with and without natural elements.



60 Richmond Housing Cooperative, Toronto



Brain areas activated during exposure to environment without nature.



Brain areas activated during exposure to natural environments.

