

1-31-1996

Montavilla Neighborhood Plan Action Charts: Adopted by Resolution Number 35491

Portland (Or.). Office of the City Auditor

Follow this and additional works at: https://pdxscholar.library.pdx.edu/oscdl_cityarchives



Part of the [Urban Studies Commons](#), and the [Urban Studies and Planning Commons](#)

Let us know how access to this document benefits you.

Recommended Citation

Portland (Or.). Office of the City Auditor, "Montavilla Neighborhood Plan Action Charts: Adopted by Resolution Number 35491" (1996). *Portland City Archives*. 73.

https://pdxscholar.library.pdx.edu/oscdl_cityarchives/73

This Report is brought to you for free and open access. It has been accepted for inclusion in Portland City Archives by an authorized administrator of PDXScholar. Please contact us if we can make this document more accessible: pdxscholar@pdx.edu.

**Montavilla Neighborhood Plan
Action Charts
Adopted by Resolution No. 35491**

RESOLUTION No. 35491

Adopt the Vision Plan Map and Action Charts for the Outer Southeast Community Plan and Neighborhood and Business Plans developed with and as part of the Outer Southeast Community Plan. (Resolution).

WHEREAS, the Comprehensive Plan Map of the Outer Southeast Community Plan is a part of the Comprehensive Plan, the Vision Plan Map is not part of the Comprehensive Plan.

WHEREAS, the Vision Plan Map is attached as Exhibit O and is intended as an illustrative diagram to show how the various themes of the Outer Southeast Community relate to each other. Plan features and elements support policies and objectives and are referred to in the Action Charts (Exhibit A). While realization of the Outer southeast community Plan would be enhanced through development of these features and elements, there may be other ways than those proposed to achieve the desired ends.

WHEREAS, the policy elements of the Outer Southeast Community Plan are adopted by ordinance as a part of the Comprehensive Plan, the Action Charts are not part of the Comprehensive Plan.

WHEREAS, the Outer Southeast Community Plan, is attached as Exhibit A and the following Neighborhood and Business Plans are attached as Exhibits B through L. (Exhibit B. Centennial; Exhibit C. Foster-Powell; Exhibit D. Hazelwood; Exhibit E. Lents; Exhibit F. Mill Park; Exhibit G. Montavilla; Exhibit H. Mt. Scott-Arleta; Exhibit I. Pleasant Valley; Exhibit J. Powellhurst-Gilbert; Exhibit K. South Tabor; Exhibit L. Outer Southeast Business Plan).

WHEREAS, the Action Charts consist of lists of ideas for capital projects and ongoing programs.

WHEREAS, the Action Charts describe the proposed projects, programs and regulatory actions. They identify an appropriate time frame for implementation and identify public, non-profit and private agencies and partnerships to lead or oversee the implementation of the item.

WHEREAS, the Action Charts also suggest changes in the City's land use regulations and zoning map. These changes in the City's land use regulations are adopted separately by ordinance.

WHEREAS, the City Council has adopted the Recommended Outer Southeast Community Plan vision, policies, and objectives, as amended by Council in Exhibit U, as part of the City of Portland Comprehensive Plan.

NOW, THEREFORE, BE IT RESOLVED by the Council of the City of Portland, a municipal corporation of the State of Oregon, that the City Council of the City

of Portland adopt the Vision Plan Map (Exhibit O) and the Action Charts of the Recommended Outer Southeast Community Plan, Neighborhood and Business Plan, as amended by Council (as shown in Exhibits A through L), and that:

- a. The Vision Plan Map (Exhibit O) is adopted by Council as an illustrative diagram to show how the various themes of the Outer Southeast Community relate to each other.
- b. The implementation actions associated with the Recommended Outer Southeast Community Plan Action Charts are approved by Council as a starting place for the revitalization of the Outer Southeast Community.
- c. Proposals for projects and programs approved by this resolution are understood to be a starting place. All actions have an identified implementor. They will be adopted with the understanding that some will need to be adjusted and others replaced with more feasible proposals. Identification of an implementor for an action is an expression of interest and support with the understanding that circumstances will affect the implementation leader's ability to take action.
- d. The City Council authorizes the City agencies identified on the action charts as Implementors, to engage in activities aimed at implementing the projects and programs called for on the Outer Southeast Community, Neighborhood, and Business Plan action charts.

BE IT FURTHER RESOLVED by the Council of the City of Portland, a municipal corporation of the State of Oregon that the City Council authorizes and directs the Bureau of Planning to make corrections to the action charts of the Outer Southeast Community Plan, Neighborhood and Business Plans in order to correct typographical errors and to ensure parallel construction.

Adopted by the Council,
Commissioner Charlie Hales
Gerald D. Brock, Ph.D., AIA, AICP: gdb

BARBARA CLARK
Auditor of the City of Portland
By

Deputy

Action Chart 1: Housing and Neighborhood Livability

#	Actions	Time				Implementors
		Adopted with Plan	On-going	Next 5 Yrs	6 to 20 Yrs	
	PROJECTS					
H1	Build porches on new and existing homes to enhance the architectural and public safety qualities of the housing stock in Montavilla.	X				BOP/MNA
H2	Rehabilitate dilapidated residential structures as well as build new housing.	X				ROSE
	PROGRAMS					
H3	Organize a non-profit housing corporation to assist in the provision of housing for low and medium income residents.			X		BOP/MNA/HAP
H4	Designate eligible areas of Montavilla as distress areas and seek funding to rehabilitate the structures within these designations.			X		BHCD
H5	Form a neighborhood code enforcement team to monitor nuisances, zoning and building code violations.			X		BOP/BOB/MNA
	REGULATIONS					
H6	Apply the Institutional Residential (IR) Zoning Designation to the Cascade College and Multnomah Bible College.	X				BOP

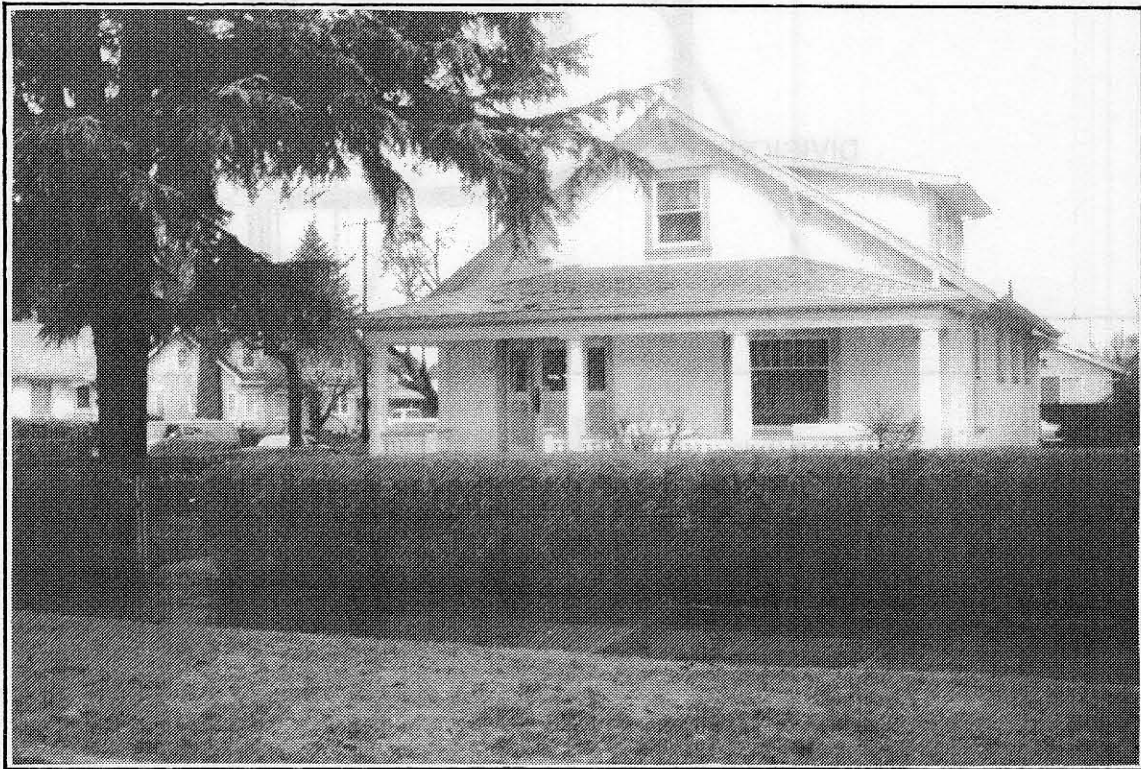
Note: Action Charts were approved by Portland City Council by resolution. They are a starting place. All actions have an identified implementor. They were adopted with the understanding that some will need to be adjusted and others replaced with more feasible proposals. Identification of an implementor for an action is an expression of interest and support with the understanding that circumstances will affect the implementation leader's ability to take action.

Action Chart 2: Historic Preservation and Urban Design

#	Actions	Time				Implementors
		Adopted with Plan	On-going	Next 5 Yrs	6 to 20 Yrs	
	PROJECTS					
HP1	Locate a building to display historical photos of places and past residents of the Montavilla neighborhood. This building could also store the P5 Marker which is now at 76th and Stark.				X	TM
HP2	Inventory historic structures, sites and resources and pursue appropriate measures to preserve and protect these resources.	X				MNA/BOP
HP3	Organize a committee to gather neighborhood materials for a time capsule which will be buried in Montavilla Park upon adoption of the Neighborhood Plan. The capsule would be buried for 50 years and be reopened by the Chair of the neighborhood association at that time.	X				Parks/MNA
HP4	Continue to maintain the Pioneer Cemetery located at the southwest corner of SE 90th and Glisan by keeping the grounds, headstones and signs clean and visible.	X				MC/MNA
HP5	Develop a neighborhood gateway at the triangular asphalt island located at SE 74 and Thorburn Avenue. Possibly a planted area with wild flowers and a sign indicating the entering and departing from Montavilla. This site is two blocks west of Montavilla's official western boundary, but because of the physical nature of the area it would be the most appropriate location for a neighborhood gateway. Pursue annexing this area into the Montavilla Neighborhood.			X		MNA
HP6	Develop a written history and a walking tour map of special places in Montavilla.			X		MNA
UD 1	Improve the Montavilla Business District located along the Stark/Washington couplet between SE 76th and 82nd Avenues. The neighborhood priorities are: burying all utility lines, planting street trees and providing street furniture.				X	BOP/MBA
UD 2	Establish a business district theme and identity by painting all the buildings in a coordinated and consistent color and design.				X	MBA

#	Actions	Time				Implementors
		Adopted with Plan	On-going	Next 5 Yrs	6 to 20 Yrs	
	PROGRAMS					
UD 3	Encourage businesses to plant street trees and provide benches in front of their businesses to enhance the look and feel of their businesses and the surrounding area.			X		BOP/MNA

Note: Action Charts were approved by Portland City Council by resolution. They are a starting place. All actions have an identified implementor. They were adopted with the understanding that some will need to be adjusted and others replaced with more feasible proposals. Identification of an implementor for an action is an expression of interest and support with the understanding that circumstances will affect the implementation leader's ability to take action.



Maintaining older homes in good condition

Action Chart 3: Transportation

#	Actions	Time				Implementors
		Adopted with Plan	On-going	Next 5 Yrs	6 to 20 Yrs	
	PROJECTS					
T1	Identify and implement strategies for paving unimproved streets, adding sidewalks and putting in curb cuts where needed to improve traffic and pedestrian mobility.			X		BHCD/MNA/PVT
T2	Consider providing left turn signals or turning lanes at major intersections along 82nd to improve mobility and safety throughout the neighborhood.				X	ODOT
T3	Provide bus schedules, shelters and trash receptacles at all bus stops in Montavilla.			X		TM
T4	Request improvements to designate bikeways. Priorities are: Burnside Street, SE 72nd and 76th Avenues.			X		PDOT
T5	Connect Montavilla's residents with large employment centers such as the Columbia Southshore, Swan Island and Rivergate industrial areas where there are living wage jobs.			X		PDC/TM
T6	Improve street crossings along the I-205 bikeway and pedestrian path at major streets to make crossing them easier for bicyclist and pedestrians.			X		ODOT
	PROGRAMS					
T7	Request PDOT to study enhancing pedestrian safety and convenience throughout the neighborhood. The neighborhood priorities are at: Washington and 80th, Stark and 81st, Glisan and 80th and 90th. Other locations includes the intersections of NE Davis and Oregon on 82nd Avenue.			X		PDOT
T8	Identify strategies to improve the level of access and convenience for transit passengers at the 82nd Avenue and Banfield MAX Station.				X	PDOT/TM/ODOT
	REGULATIONS					
T9	Request the area between SE Pine and SE Alder Streets and between 76th and 82nd Avenues be designated a pedestrian district.	X				BOP/MNA

Note: Action Charts were approved by Portland City Council by resolution. They are a starting place. All actions have an identified implementor. They were adopted with the understanding that some will need to be adjusted and others replaced with more feasible proposals. Identification of an implementor for an action is an expression of interest and support with the understanding that circumstances will affect the implementation leader's ability to take action.

Action Chart 4: Economic Development

#	Actions	Time				Implementors
		Adopted with Plan	On-going	Next 5 Yrs	6 to 20 Yrs	
	PROJECTS					
ED1	Develop a marketing plan to promote the Montavilla business community and to attract new businesses to the neighborhood. The Montavilla Business Association will seek monies from its members and others to aid in this project.			X		MBA
ED2	Improve the intersections of 82nd and Division and 92nd to I-205 between Stark and Washington as areas to be developed into viable commercial nodes.				X	MNA/MBA
	PROGRAMS					
ED3	Develop a neighborhood Awards Program to reward neighborhood businesses that maintain and improve the appearance of their property for all to enjoy.			X		MBA/MNA
	REGULATIONS					
ED4	Map the "b" overlay zone to separate and protect residential uses from commercial and industrial uses. The "b" zone is intended to reduce impacts such as noise and sight from adversely affecting residential areas.	X				BOP

Note: Action Charts were approved by Portland City Council by resolution. They are a starting place. All actions have an identified implementor. They were adopted with the understanding that some will need to be adjusted and others replaced with more feasible proposals. Identification of an implementor for an action is an expression of interest and support with the understanding that circumstances will affect the implementation leader's ability to take action.

Action Chart 5: Public Safety

#	Actions	Time				Implementors
		Adopted with Plan	On-going	Next 5 Yrs	6 to 20 Yrs	
	PROJECTS					
PS1	Establish a mini-police-precinct station in Montavilla.				X	PPB
PS2	Facilitate Community Policing activities to help reduce crime in the neighborhood.			X		PPB/MNA
PS3	Establish neighborhood watch and Blockwatch programs to help fight crime in the neighborhood.			X		MNA/BHCD
	PROGRAMS					
PS4	Implement police bicycle patrol to assist in fighting crime in the neighborhood.				X	PPB
PS5	Establish training programs for landlords of rental property to assist them in screening bad tenants and preventing criminal activities on their properties.			X		PPB/MNA
PS6	Increase fines and the writing of parking and speeding tickets to reduce traffic violations in the neighborhood.			X		PPB

Note: Action Charts were approved by Portland City Council by resolution. They are a starting place. All actions have an identified implementor. They were adopted with the understanding that some will need to be adjusted and others replaced with more feasible proposals. Identification of an implementor for an action is an expression of interest and support with the understanding that circumstances will affect the implementation leader's ability to take action.

5. Utilize available vacant areas for community gardens.
6. Encourage residents to obey Scoop and Leash laws in all of the neighborhood parks, public places and in all other parts of the neighborhood. Post appropriate signs throughout the neighborhood.
7. Identify appropriate vacant lots throughout the neighborhood and develop them as nontraditional parks. These parks might be in the form of: Art, graffiti, Skateboard, soapbox and/or dog parks. Other alternative types of parks might include bicycle-free parks and exercise parks.

Action Chart 6: Parks, Open Space and Environment

#	Actions	Time				Implementors
		Adopted with Plan	On-going	Next 5 Yrs	6 to 20 Yrs	
	PROJECTS					
P1	Consider building a weight room and establish a weight training program for the Montavilla Community Center.			X		Parks
P2	Request Bureau of Parks and Recreation to consider building a restroom at the north end of Montavilla Park.			X	X	MNA
P3	Request the Bureau of Parks and Recreation to consider covering the swimming pool at the Montavilla Community Center for year-round use.				X	MNA
P4	Update outdoor facilities such as swing sets and ball fields at Montavilla, Berrydale and Harrison Parks to provide a safer and more enjoyable recreational experience for children and adults using these parks.			X		Parks
P5	Build an Environmental center in the neighborhood to educate people about the environment.					MNA
P6	Expand the parking lot at the Montavilla Community Center to provide more parking spaces.			X		Parks

Note: Action Charts were approved by Portland City Council by resolution. They are a starting place. All actions have an identified implementor. They were adopted with the understanding that some will need to be adjusted and others replaced with more feasible proposals. Identification of an implementor for an action is an expression of interest and support with the understanding that circumstances will affect the implementation leader's ability to take action.

Key to Implementing Agencies

BES	Bureau of Environmental Services
BHCD	Bureau of Housing and Community Development
BOB	Bureau of Buildings
BOP	Bureau of Planning
HAP	Housing Authority of Portland
MBA	Montavilla Business Association
MC	Multnomah County
MNA	Montavilla Neighborhood Association
ODOT	Oregon Department of Transportation
Parks	Bureau of Parks and Recreation
PPB	Portland Police Bureau
PDC	Portland Development Commission
PDOT	Portland Office of Transportation
PVT	Private
ROSE	Revitalize Outer Southeast
TM	Tri-Met

Historic Landmarks
St. Andrew's Care Center
88 10th and Main