

# Collaborative Partnerships and Outcomes: Lessons from Tree for All (Tualatin Watershed)

Rebecca McLain<sup>1</sup>, Antonia Machado<sup>2</sup>, Bruce Roll<sup>2</sup>

<sup>1</sup>PSU-Institute for Sustainable Solutions

<sup>2</sup>Clean Water Services

Partners



Funders:

US Fish and Wildlife Service

Clean Water Services





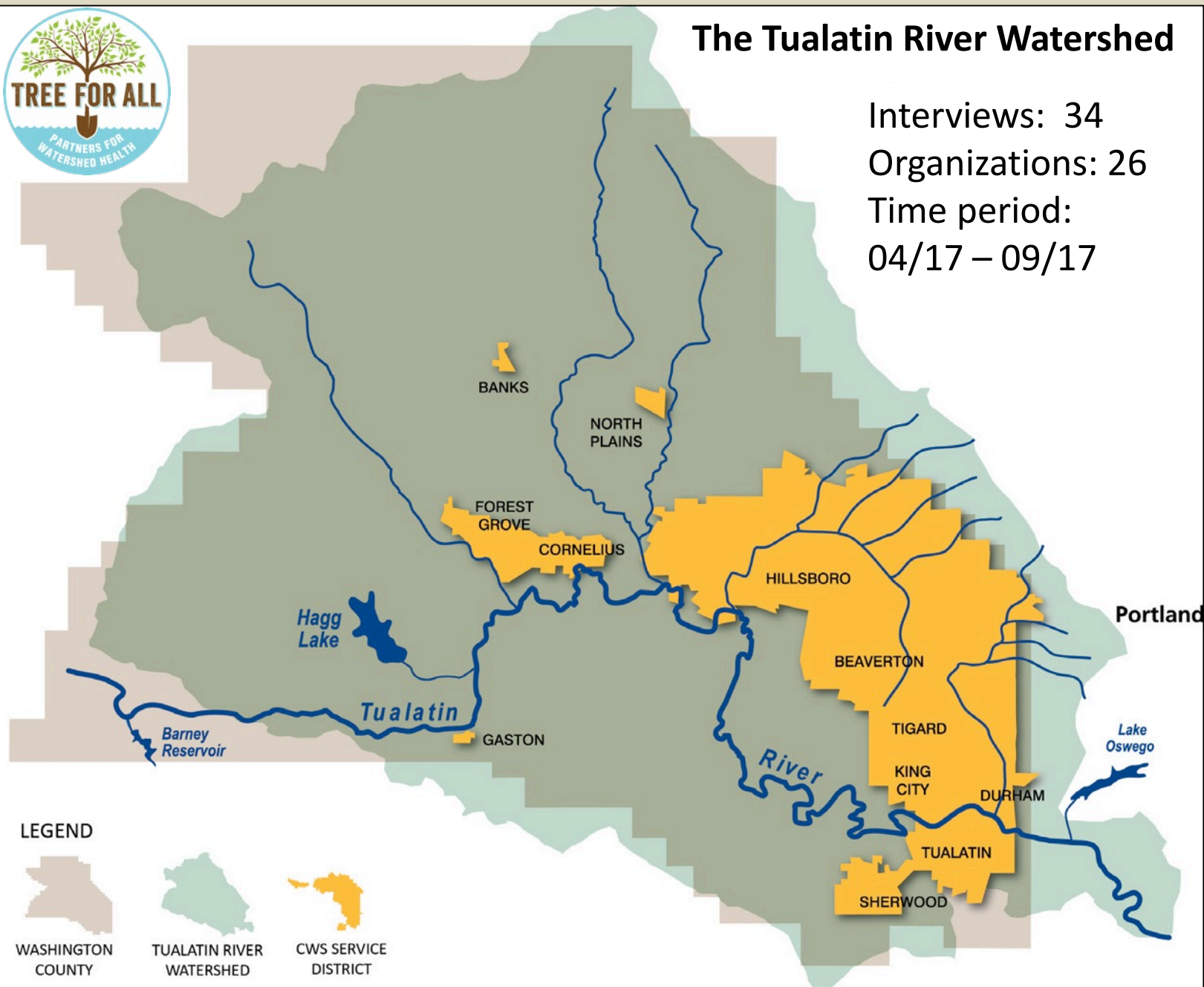
## The Tualatin River Watershed

Interviews: 34

Organizations: 26

Time period:

04/17 – 09/17





## The Tualatin River Watershed

- ★ TFA in-depth case
- ★ TFA mini-case
- ★ Mini-case (not TFA)

Tualatin Watershed  
Farmland Restoration

Greater Forest Park  
Conservation Initiative

Jackson Bottom Wetlands

Growing  
Green

Tualatin River Watershed Council-Murrayhill HOA

Fanno Creek  
Greenway

Tualatin River National Wildlife Refuge

City of Tualatin Parks Volunteers

### LEGEND



WASHINGTON  
COUNTY

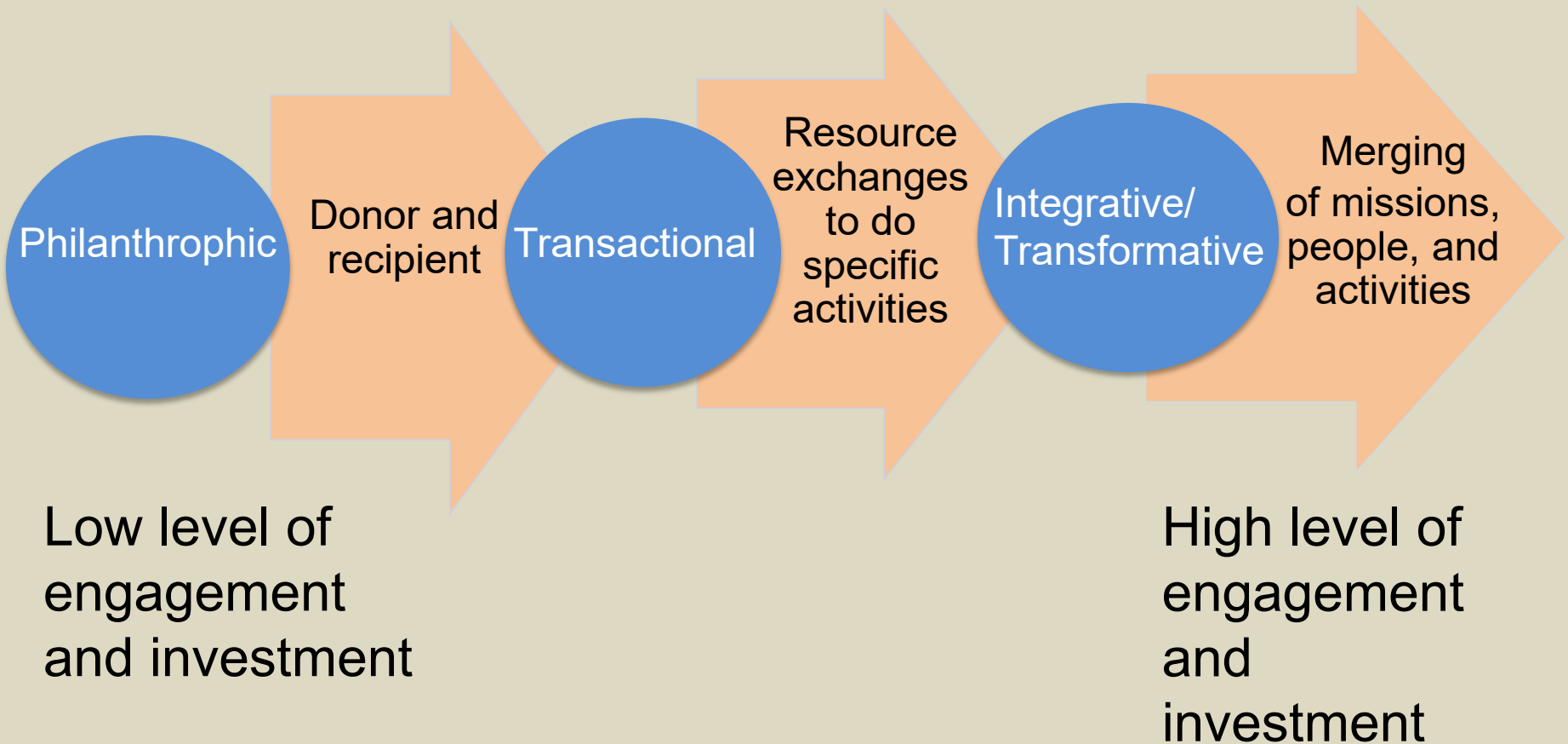


TUALATIN RIVER  
WATERSHED



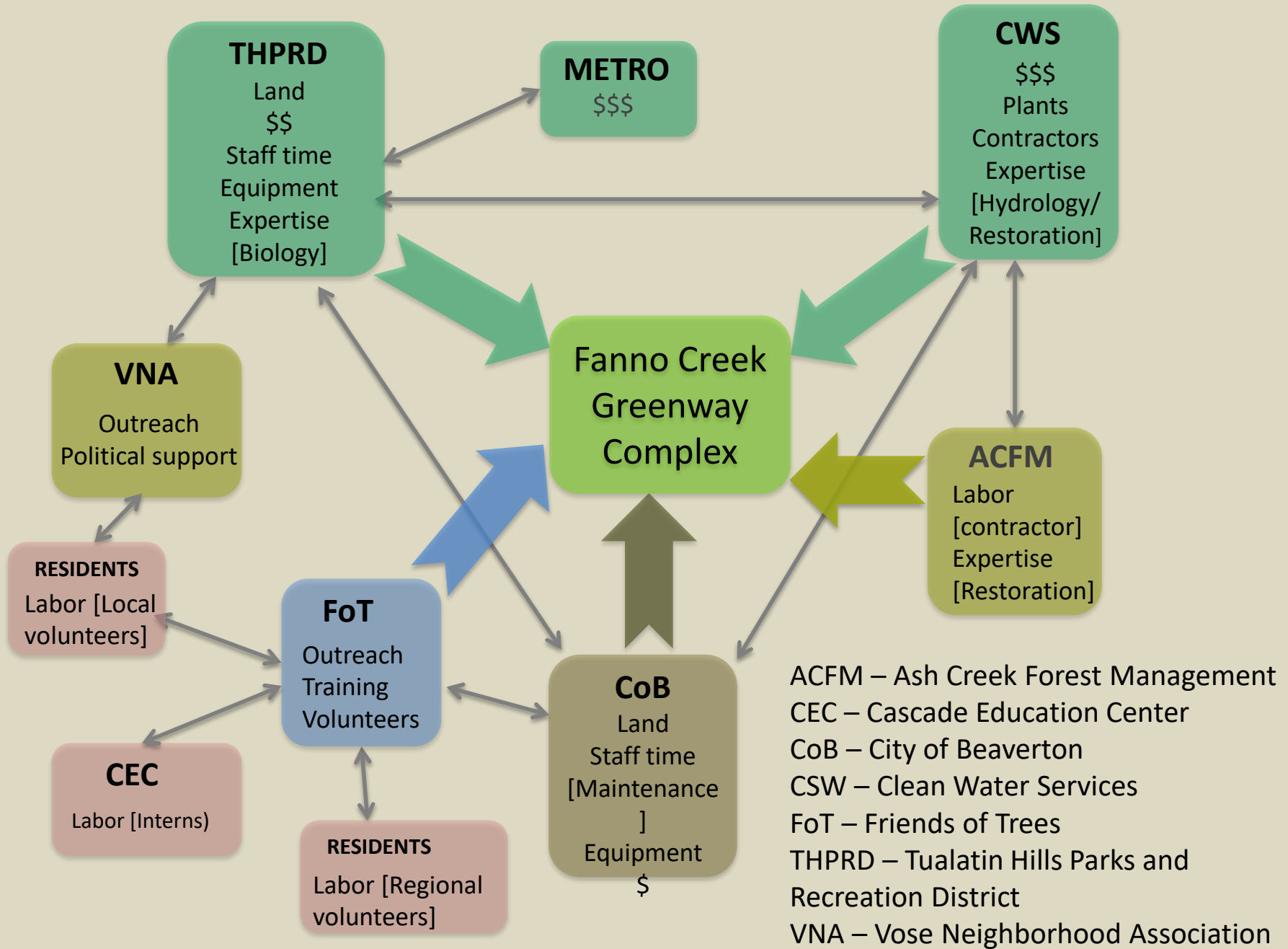
CWS SERVICE  
DISTRICT

# Partnership Continuum



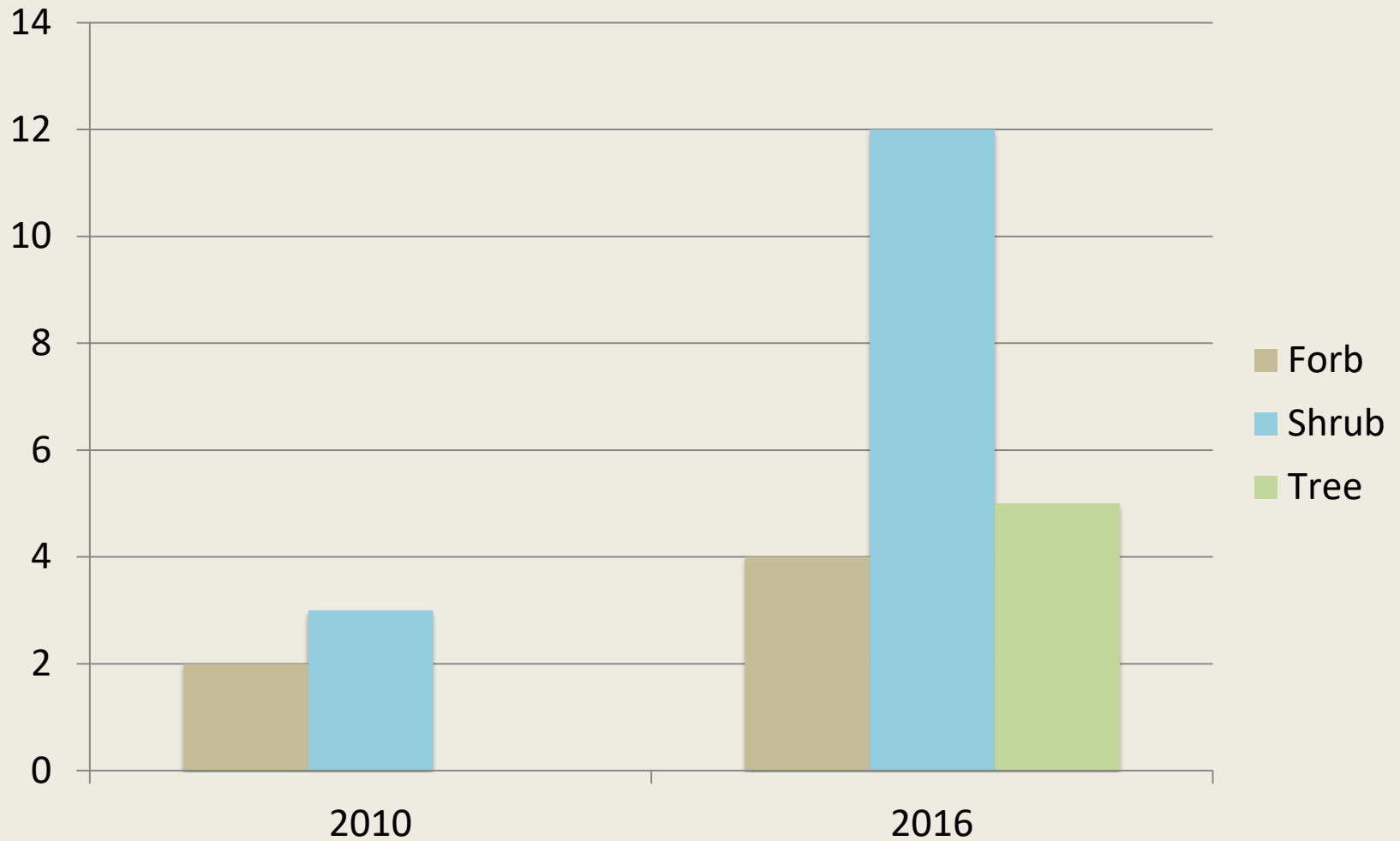
Adapted from Austin, J. 2003. Strategic alliances: Managing the collaboration portfolio. Stanford Social Innovation Review. Summer: 49-55.

# Fanno Creek Greenway Complex Collaborative Restoration Network



# Ecological Outcomes

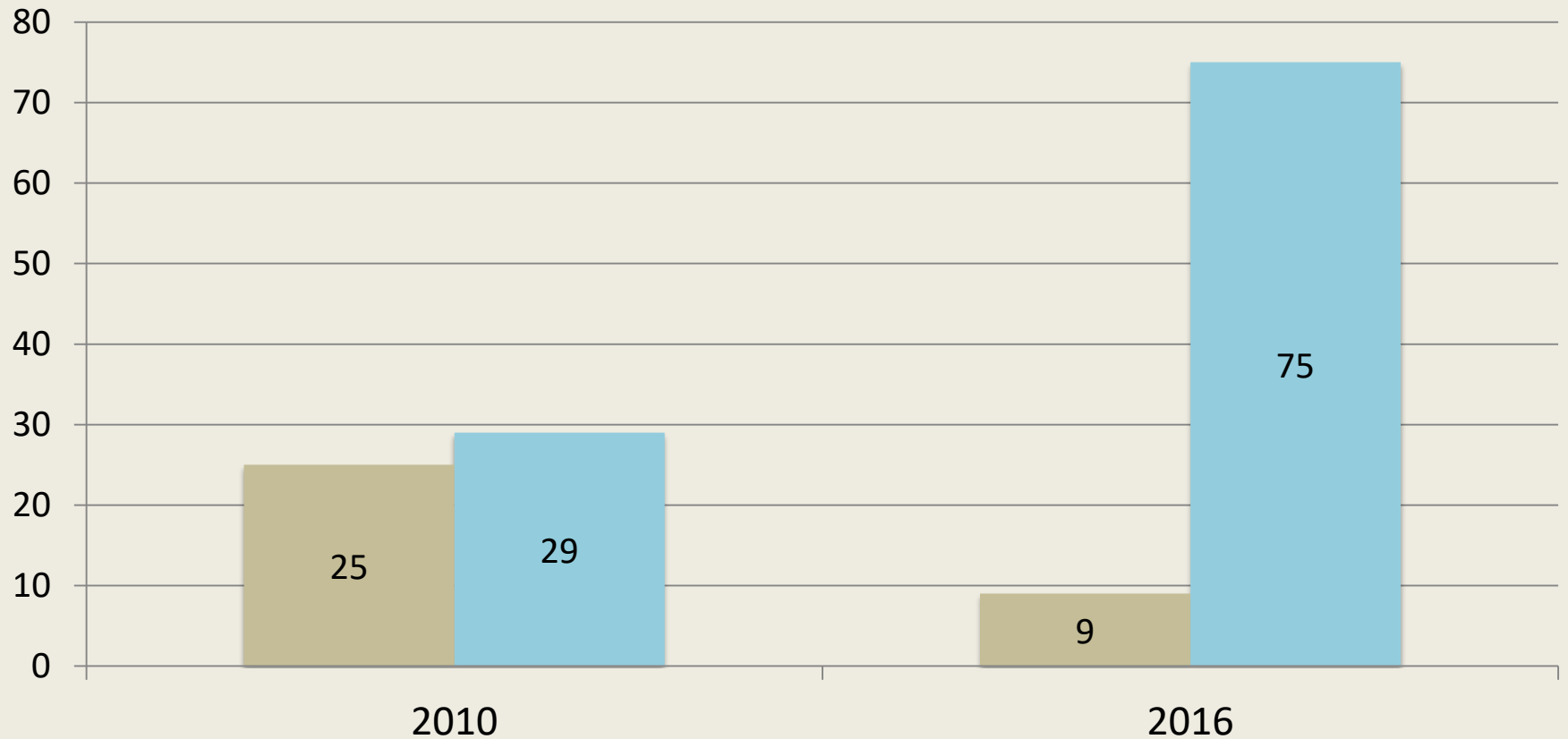
Fanno Creek – Greenway Park  
Change in native plant diversity (pre/post restoration)



# Ecological Outcomes

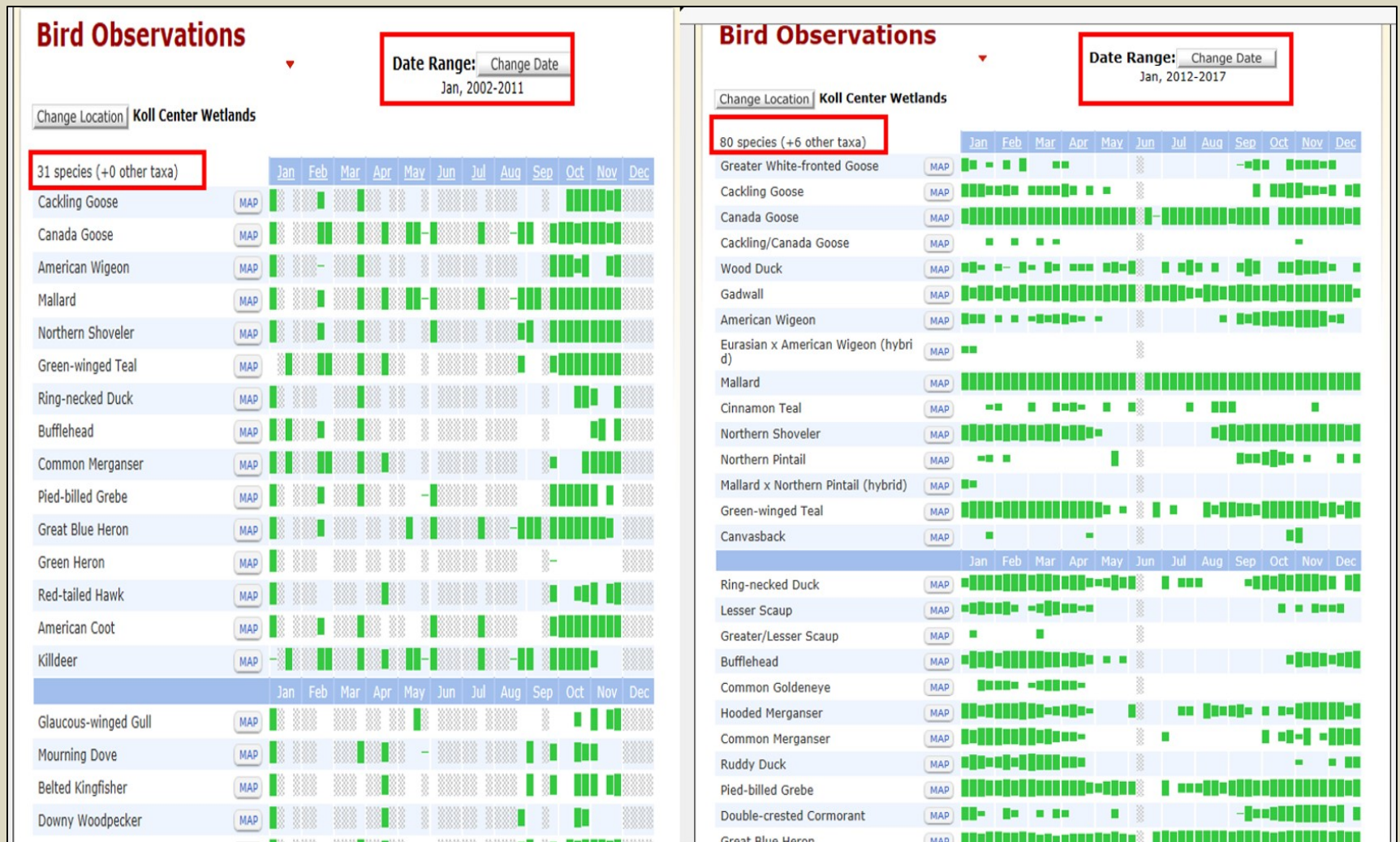
Change in percent vegetative cover  
pre/post restoration

■ Invasive species of concern    ■ Native woody species





# Ecological Outcomes



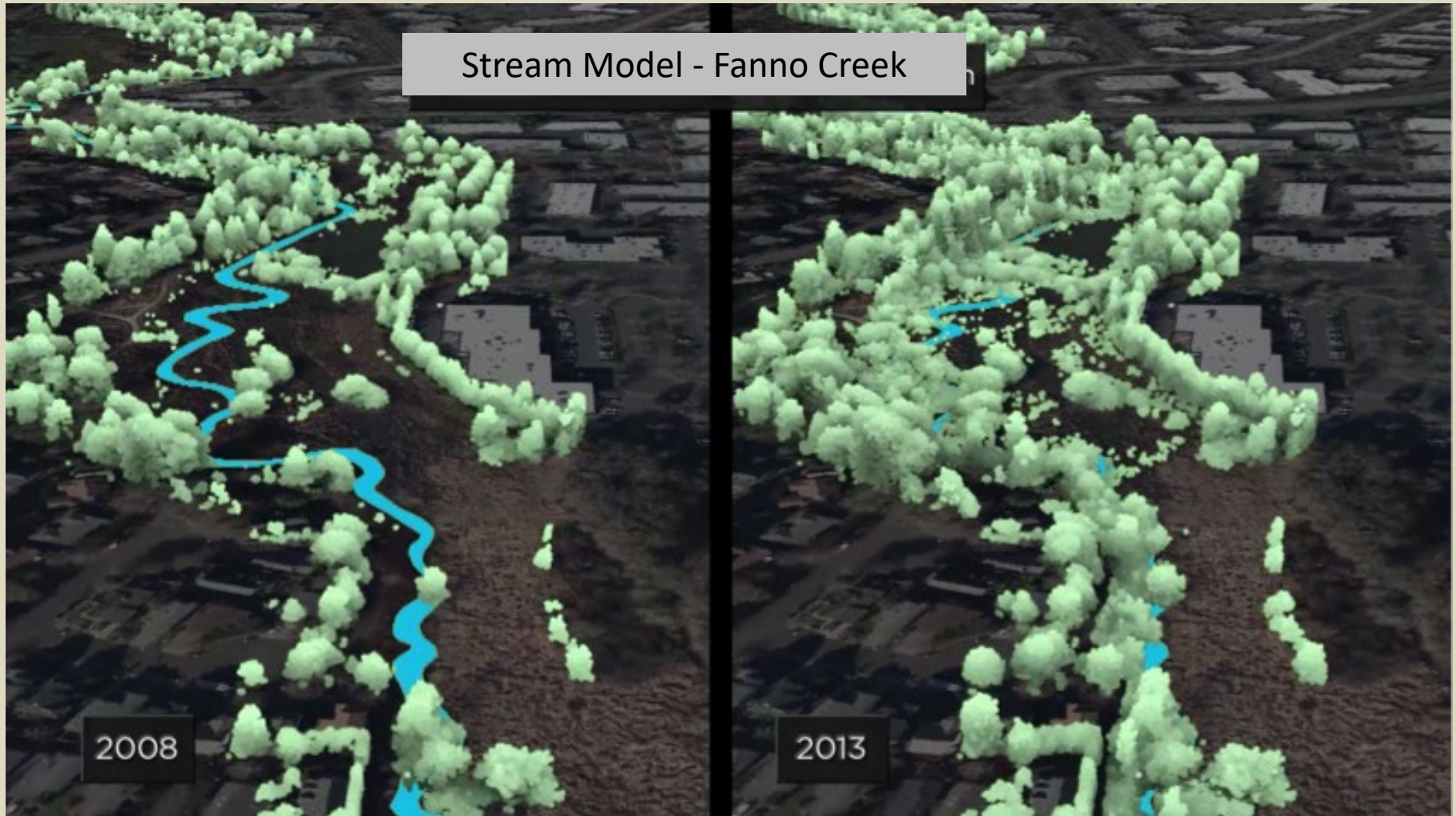
2002 - 2011

2012 - 2017

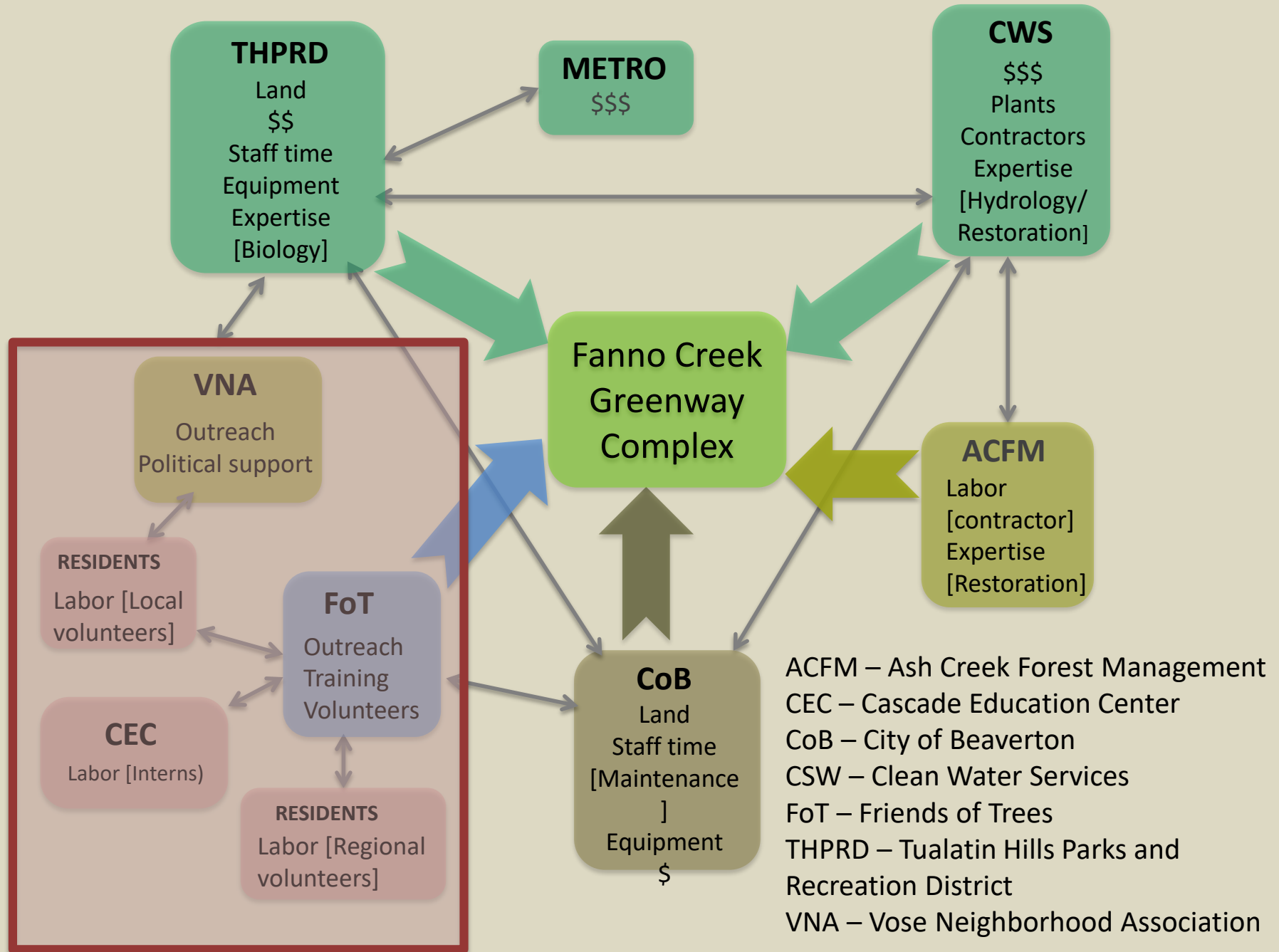
Koll Center Wetlands. Green areas indicate months during which sitings were recorded. Source: EBird database



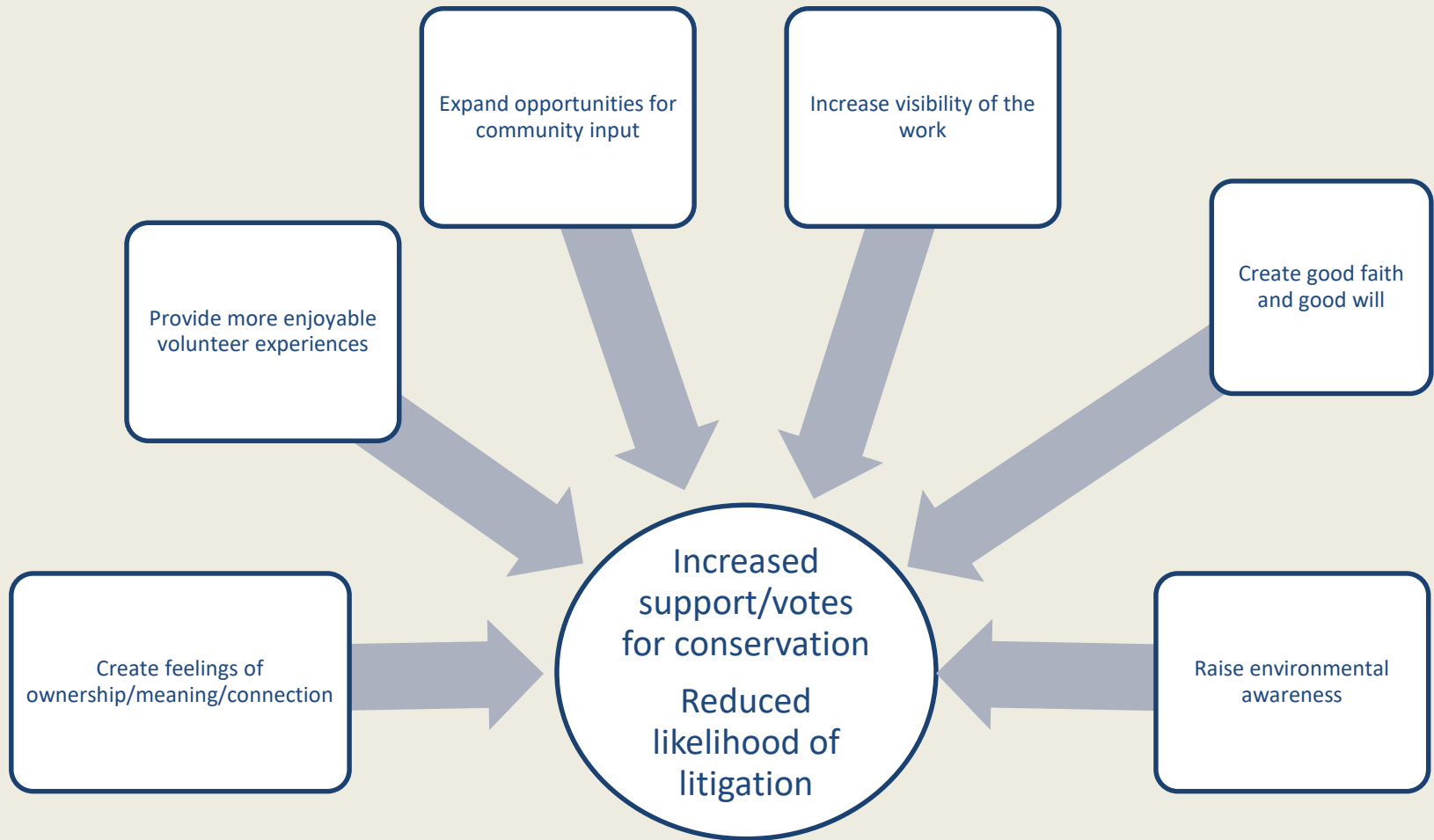
# Ecological Outcomes



# Fanno Creek Greenway Complex Collaborative Restoration Network



# Benefits of Broad-Based Community Engagement





# Factors that facilitate large-scale collaborative conservation

- *Organizational cultures conducive to collaboration and experimentation*
  - *Adaptability and flexibility*
  - *Reciprocity*
  - *Communication*
- *Critical mass of collaborative partners*
- *Complementarity in skills and resources among partners*
- *Development of a shared mental model*
- *Connections into and engagement with the local communities*





To learn more about the  
Power of Partnership project  
email: [mclainrj@pdx.edu](mailto:mclainrj@pdx.edu)



Photo credit: R. McLain



Photo credit: R. McLain



Photo credit: USFWS

To learn more about Tree for All:  
<https://www.jointreeforall.org/>