

Summer 2016

# Indicators of the Metroscape: The Young, the Old, and the Single

Elizabeth Morehead  
*Portland State University*

Follow this and additional works at: <https://pdxscholar.library.pdx.edu/metroscape>



Part of the [Urban Studies Commons](#), and the [Urban Studies and Planning Commons](#)

**Let us know how access to this document benefits you.**

---

## Recommended Citation

Morehead, E. (2016) Indicators of the Metroscape: The Young, the Old, and the Single. *Metroscape*, p. 31

This Article is brought to you for free and open access. It has been accepted for inclusion in *Metroscape* by an authorized administrator of PDXScholar. Please contact us if we can make this document more accessible:  
[pdxscholar@pdx.edu](mailto:pdxscholar@pdx.edu).

## The Young, the Old, and the Single

by Elizabeth Morehead

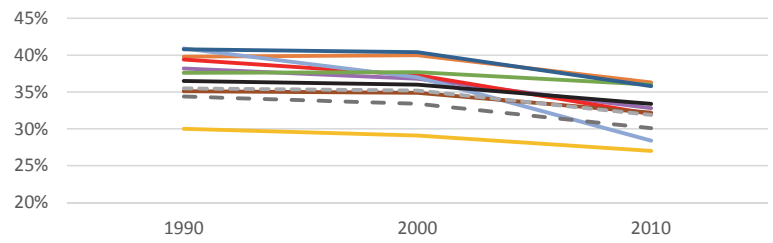
**H**ouseholds in our region are changing. Between 1990 and 2010, the percentage of households with children decreased while one-person households increased. In some, but not all counties, the percentage of households that included seniors also increased.

In 2010, 32 percent of households in the Portland MSA included children, down from 35 percent in 1990. The decreases ranged from 4 percent in Washington County to 13 percent in Skamania County. But the largest decreases, across all geographic areas, took place between 2000 and 2010.

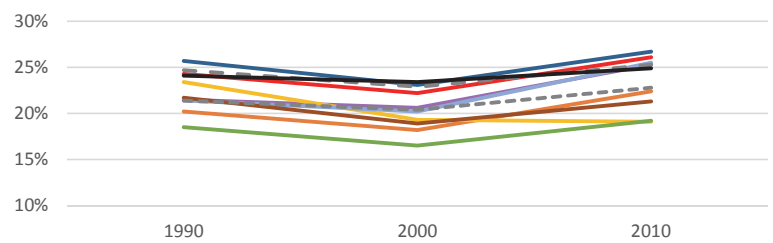
Between 1990 and 2010, the percentage of households that included individuals 65 or older fluctuated. The percentage decreased for all geographic areas shown here between 1990 and 2000, although the decrease was minimal for the nation as a whole. From 2000 to 2010, it increased between 1 and 4 percent in all counties except Multnomah County, where the percentage decreased by 4 percent. In 2010, Yamhill and Columbia counties had the highest percentages of households with seniors.

While the percentage of one-person households increased in all seven counties, with the largest increases in Skamania and Clackamas counties, the percentage of one-person households in Multnomah County increased least. Multnomah County, however, is the only county in the region where over 30 percent of households were one-person households in 1990, 2000 and 2010.

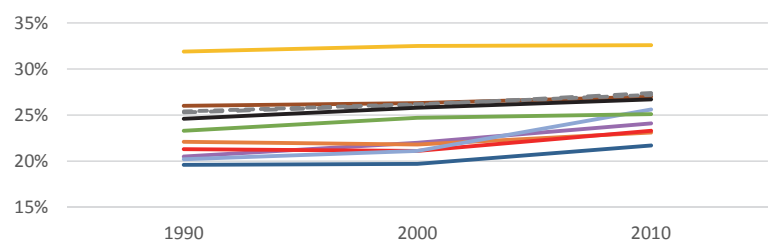
Percentage of Households with Individuals Under 18 Years of Age



Percentage of Households with Individuals 65 Years of Age or Older



Percentage of One-Person Households



- Clackamas County
- Clark County
- Columbia County
- Multnomah County
- Skamania County
- Washington County
- Yamhill County
- Portland MSA
- - - Oregon
- United States

Source: US Census