

Winter 2017

Indicators of the Metroscape: Average Wage per Job

Institute of Portland Metropolitan Studies

Follow this and additional works at: <https://pdxscholar.library.pdx.edu/metroscape>



Part of the [Urban Studies Commons](#), and the [Urban Studies and Planning Commons](#)

Let us know how access to this document benefits you.

Recommended Citation

Institute of Portland Metropolitan Studies. Indicators of the Metroscape: Average Wage per Job. Metroscape, Winter 2017, page 31.

This Article is brought to you for free and open access. It has been accepted for inclusion in Metroscape by an authorized administrator of PDXScholar. Please contact us if we can make this document more accessible: pdxscholar@pdx.edu.

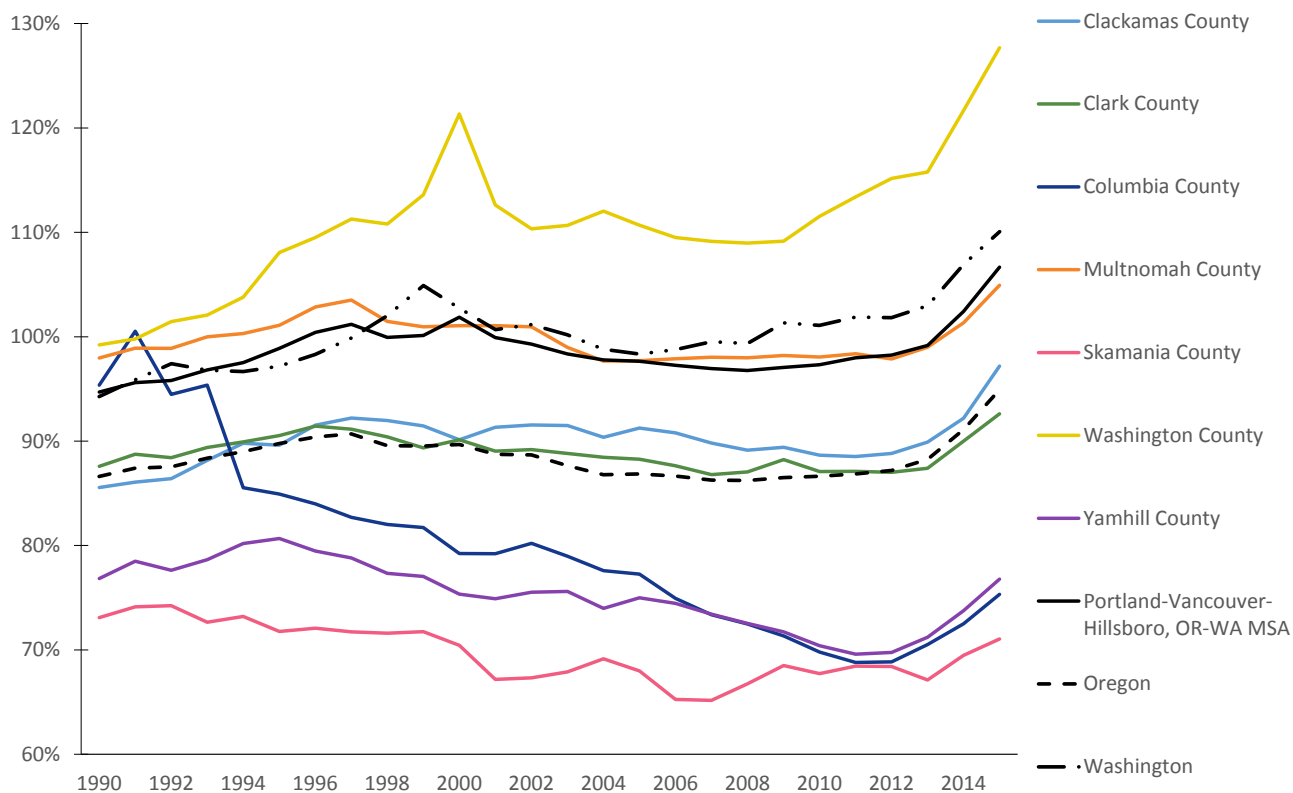
Indicators of the Metroscope

Average Wage per Job

Across the region, the average wage per job as a percentage of the US Metro Wage per Job has been increasing since 2013. In 2015, the average wage per job in the Portland-Vancouver-Hillsboro MSA was 107 percent of the average wage per job in the Metro United States. However, of the region's seven counties, just two have an average wage per job higher than the US Metro average wage (\$55,102): Multnomah County (\$54,393) and Washington County (\$57,057). Skamania County has consistently had the lowest average wage, just 71% of the US Metro in 2015.

To learn more visit http://portlandpulse.org/average_wage_per_job

Portland MSA average wage as a percentage of the US metro average wage, 2001 - 2015



Source: Bureau of Economic Analysis, Table CA30