

Portland State University

PDXScholar

Institute of Portland Metropolitan Studies
Publications

Institute of Portland Metropolitan Studies

3-2016

State of Clark County: Trends from Greater Portland Pulse

Sheila A. Martin

Portland State University, sheilam@pdx.edu

Portland State University. Institute of Portland Metropolitan Studies

Follow this and additional works at: <https://pdxscholar.library.pdx.edu/metropolitianstudies>



Part of the [Urban Studies and Planning Commons](#)

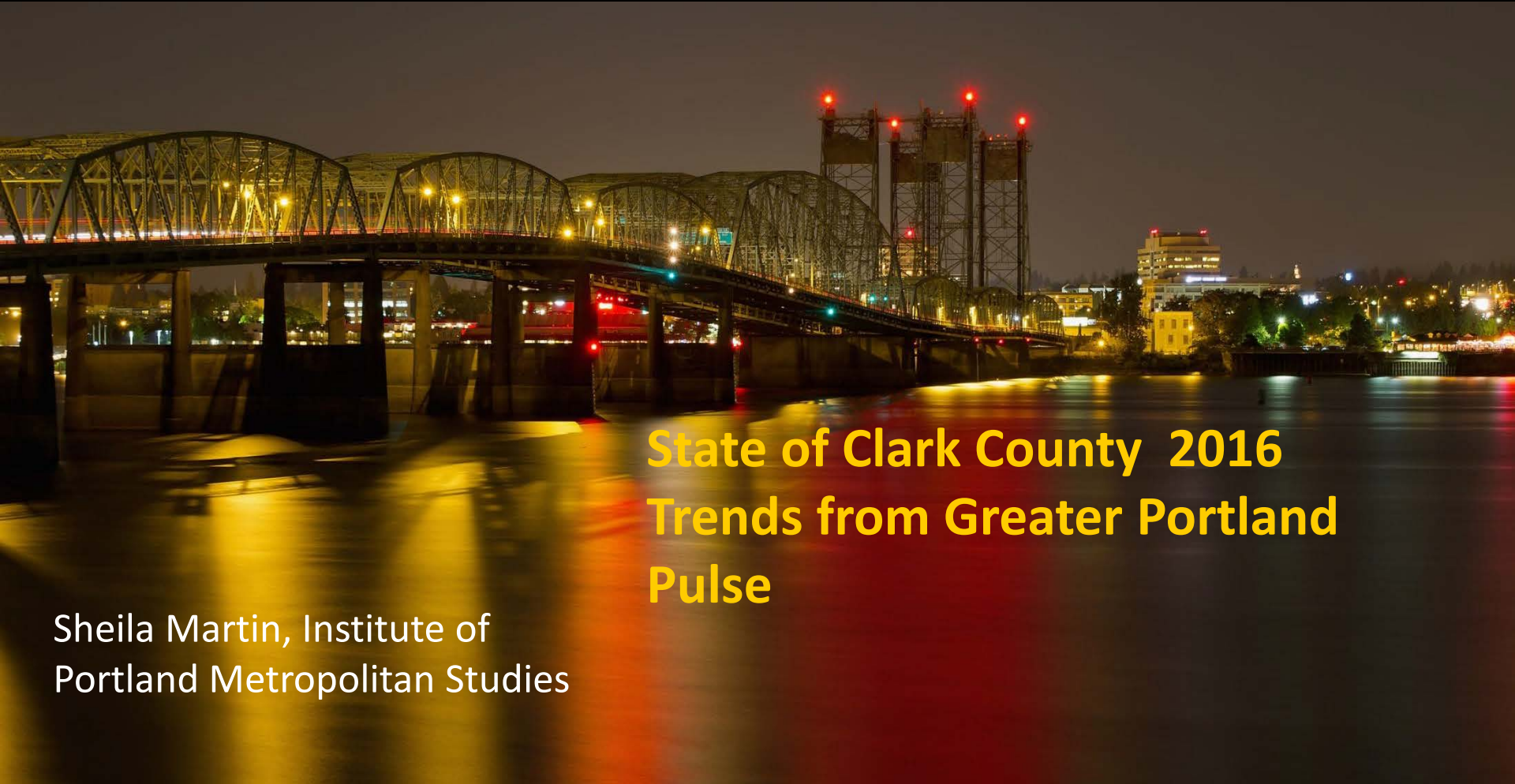
Let us know how access to this document benefits you.

Citation Details

Martin, Sheila A. and Portland State University. Institute of Portland Metropolitan Studies, "State of Clark County: Trends from Greater Portland Pulse" (2016). *Institute of Portland Metropolitan Studies Publications*. 142.

<https://pdxscholar.library.pdx.edu/metropolitianstudies/142>

This Presentation is brought to you for free and open access. It has been accepted for inclusion in Institute of Portland Metropolitan Studies Publications by an authorized administrator of PDXScholar. Please contact us if we can make this document more accessible: pdxscholar@pdx.edu.



State of Clark County 2016 Trends from Greater Portland Pulse

Sheila Martin, Institute of
Portland Metropolitan Studies

Greater Portland Pulse

A Tool for Regional Engagement & Decision Making



[ABOUT](#) [PARTNERS](#) [REPORTS](#) [TOOLS](#) [GPP IN ACTION](#)


SEARCH

GREATER PORTLAND PULSE PROVIDES A COMMON FOUNDATION FOR REGIONAL COLLABORATION AND INFORMED DECISION MAKING BY TRACKING OUR REGION'S SOCIAL, ECONOMIC, AND ENVIRONMENTAL CONDITIONS

TOPICS

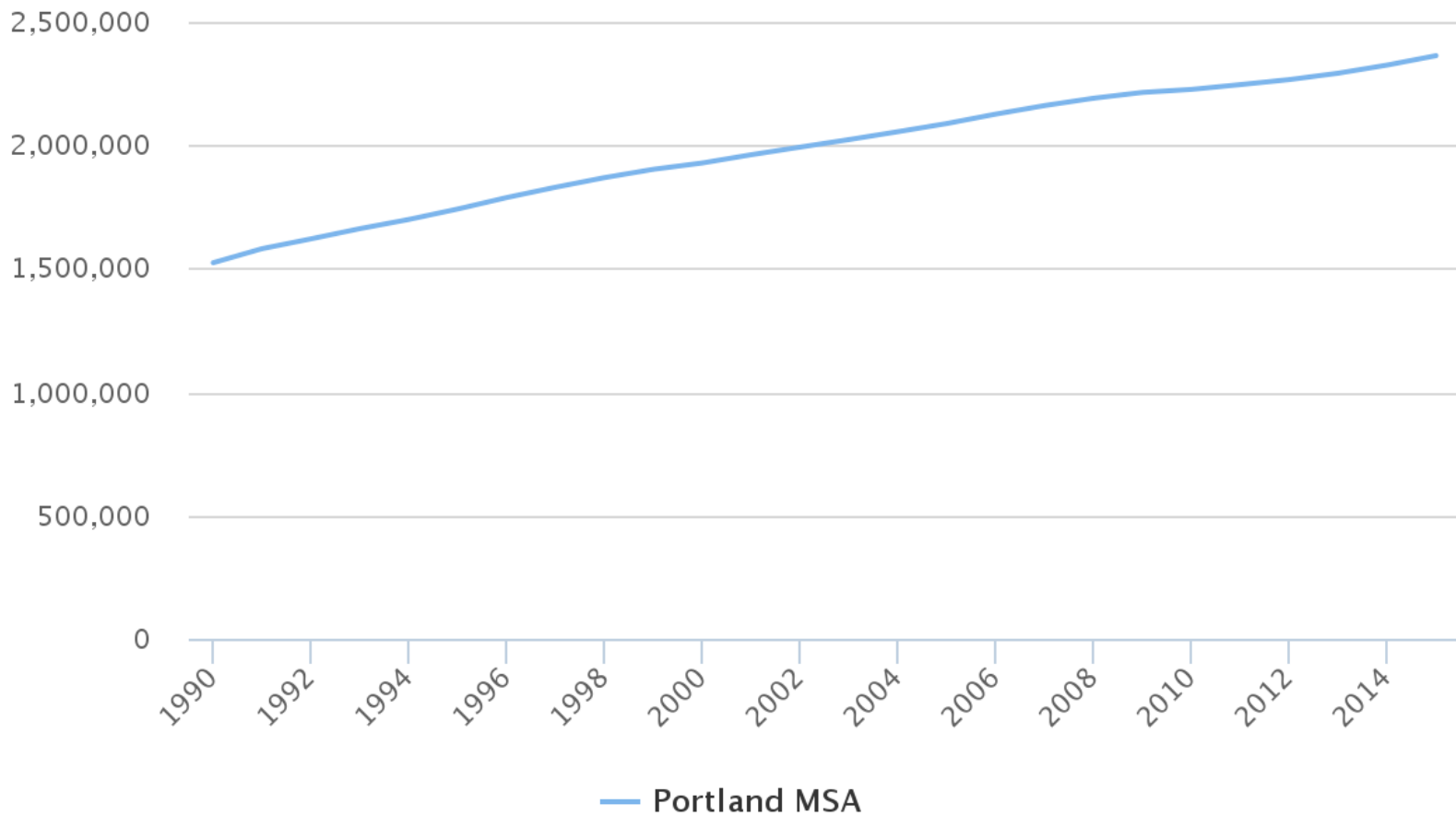
FEATURED TOPICS



- 
- A nighttime photograph of the Astoria-Megler Bridge over the Willamette River in Portland, Oregon. The bridge's steel truss structure is illuminated with warm yellow lights, and its reflection is visible in the water. In the background, the city skyline is lit up, and a tall construction crane with red lights stands prominently.
- Population
 - Income and wages
 - Growth by Industry
 - Education

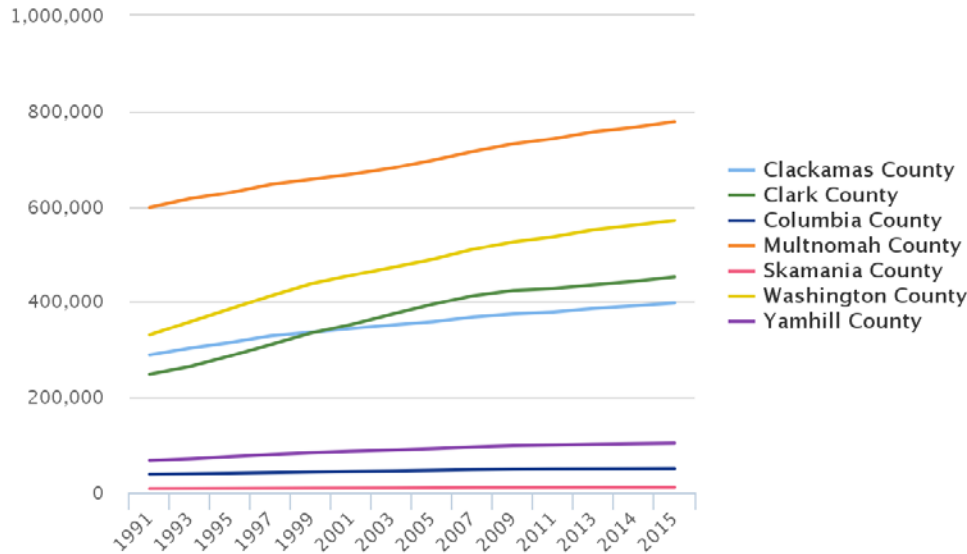
Total population, Portland MSA, 1990–2015

Source: Population Research Center; Washington State Office of Financial Management



Population growth, by county, Portland MSA, 1991-2015

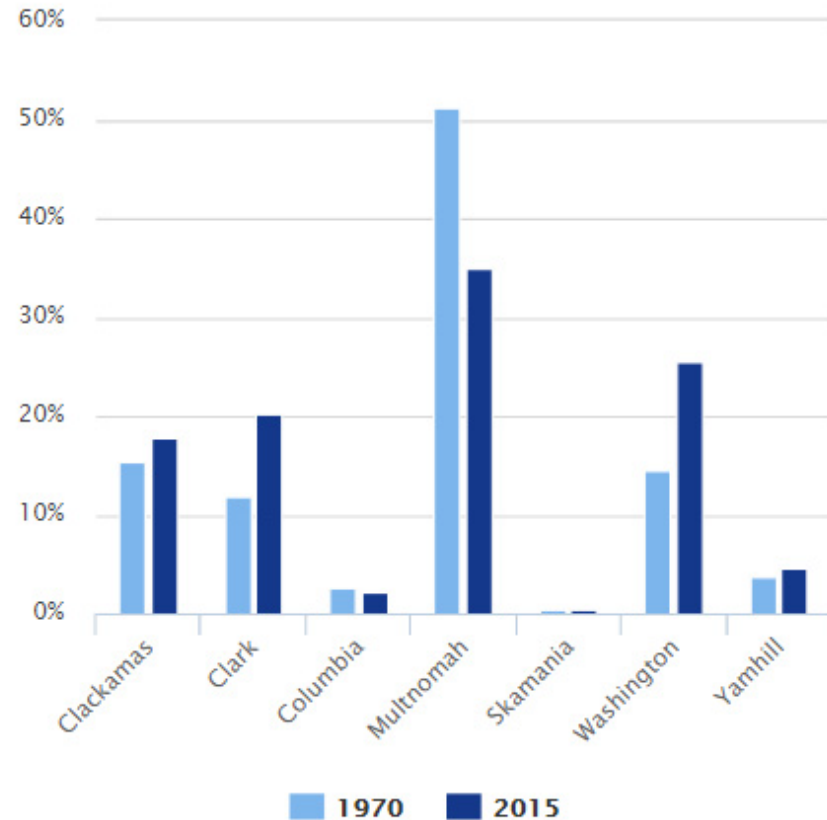
Source: Population Research Center; Washington State Office of Financial Management



Highcharts.com

Share of population by county, Portland MSA, 1970-2015

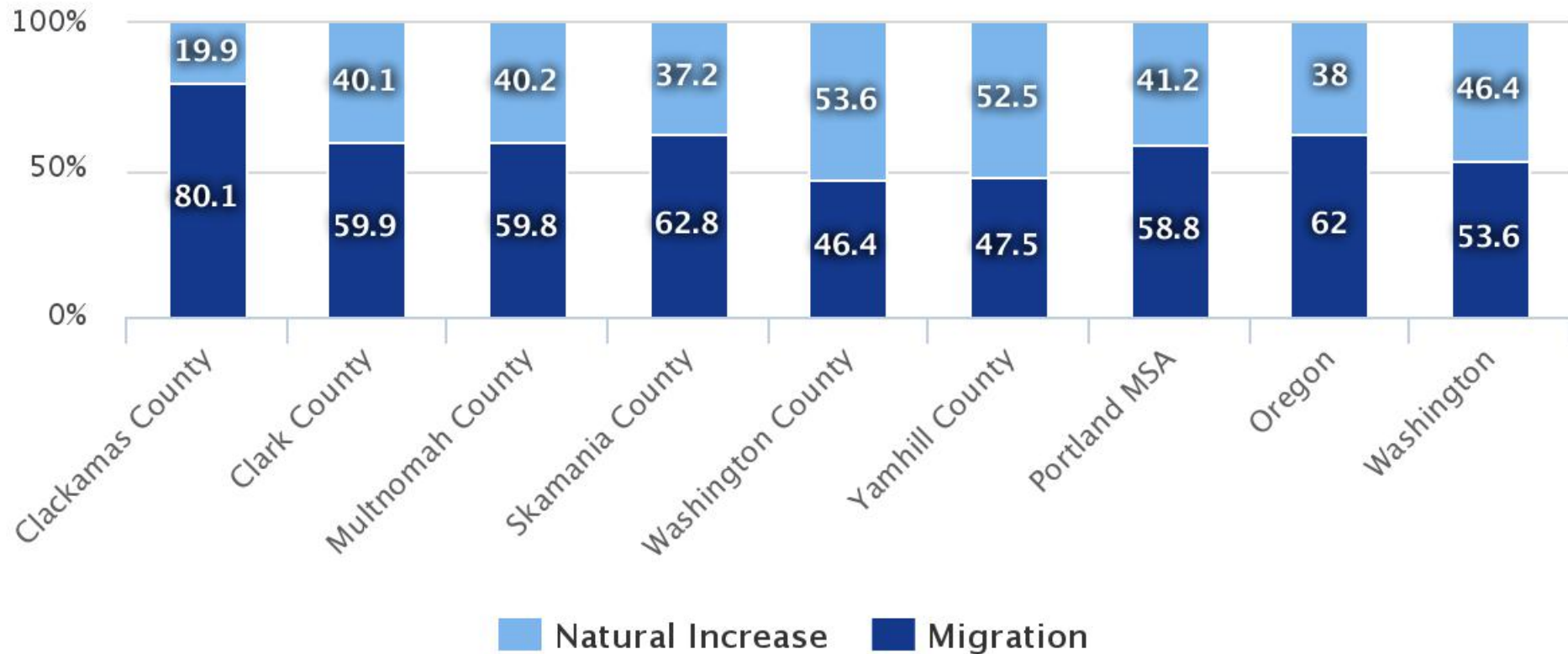
Source: Population Research Center; Washington State Office of Financial Management



Highcharts.com

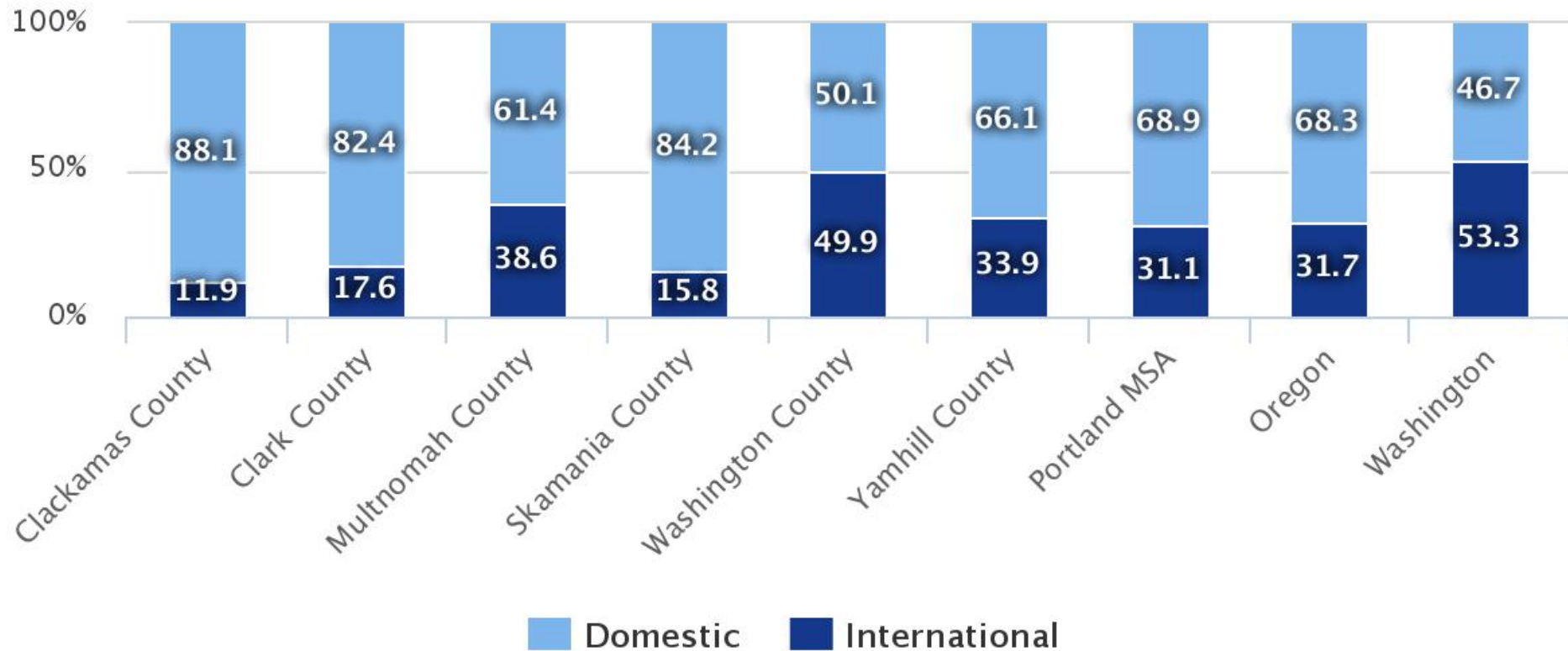
Percentage of population change due to natural increase and migration, by county, Portland MSA, 2010–2014

Source: US Census, Table PEPCOMP



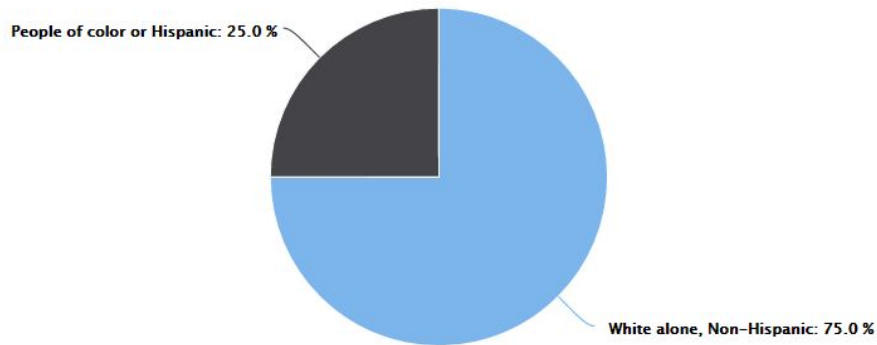
Percentage of domestic and international migration, by county, Portland MSA, 2010–2014

Source: US Census, Table PEPCOMP



Population by race and Hispanic origin, Portland MSA, 2014

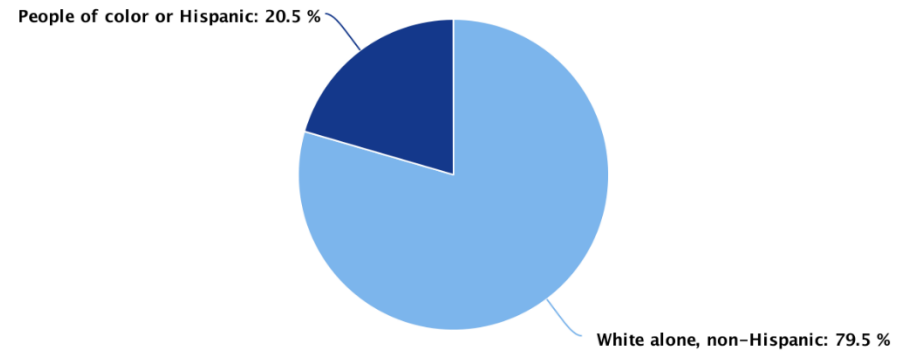
Source: US Census, American Community Survey, Table B03002



Highcharts.com

Population by race and Hispanic origin, Clark County, 2014

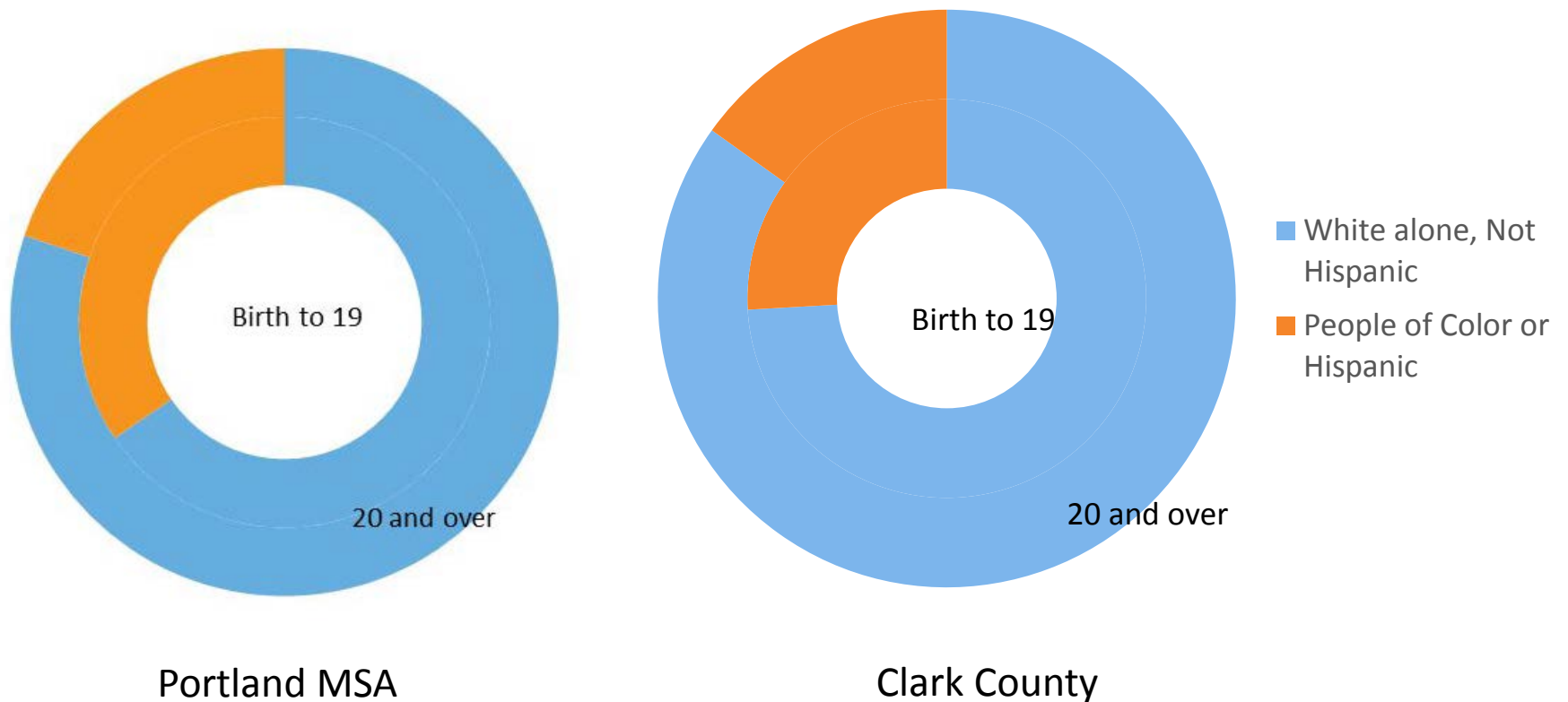
Source: US Census, American Community Survey, Table B03002



Highcharts.com

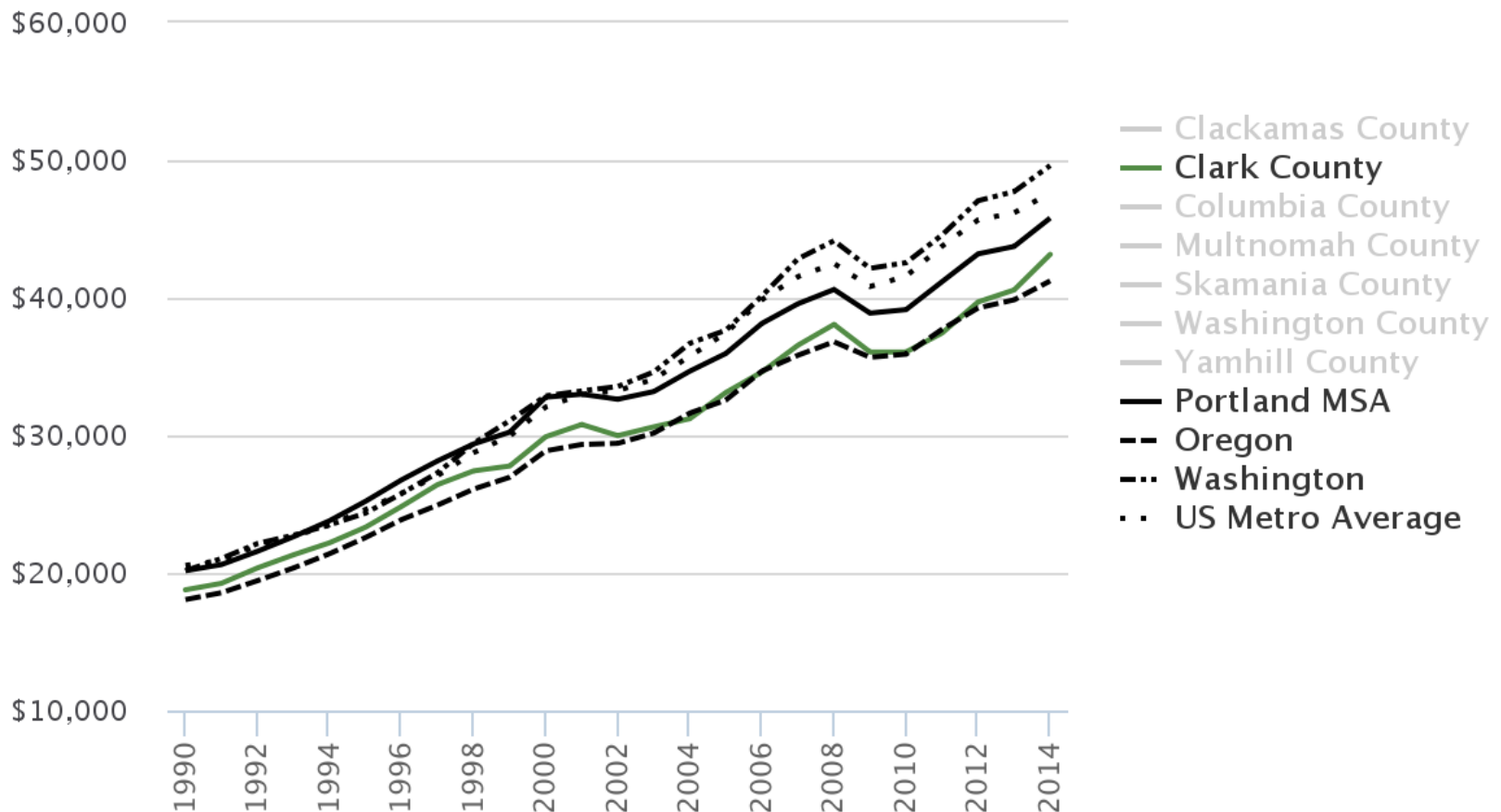
Population by age, race, and Hispanic origin, 2010

Source: US Census, Table P12, P12I



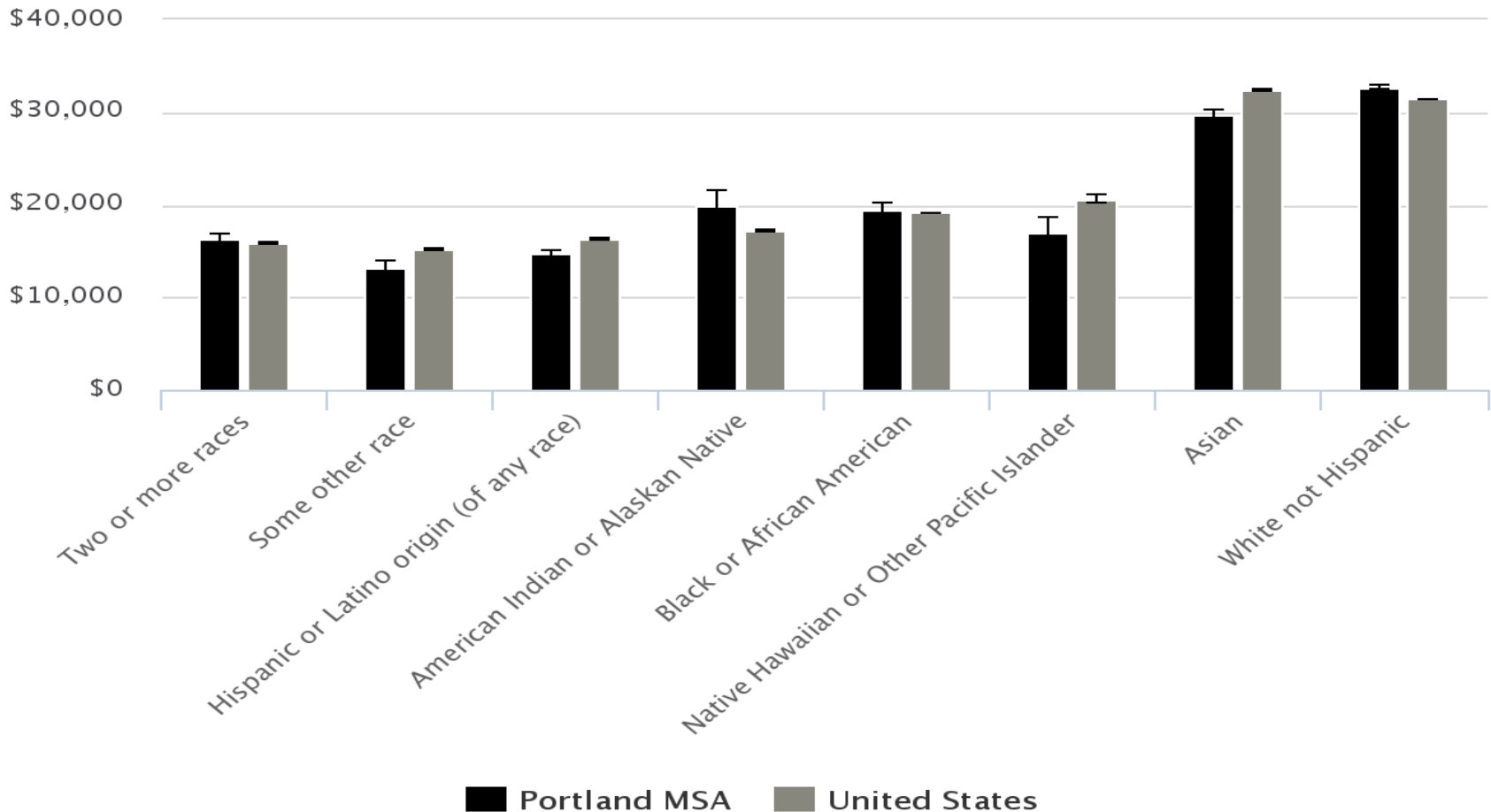
Annual per capita income, by county, Portland MSA, 1990–2014

Source: Bureau of Economic Analysis, Table CA1-3 Personal income summary



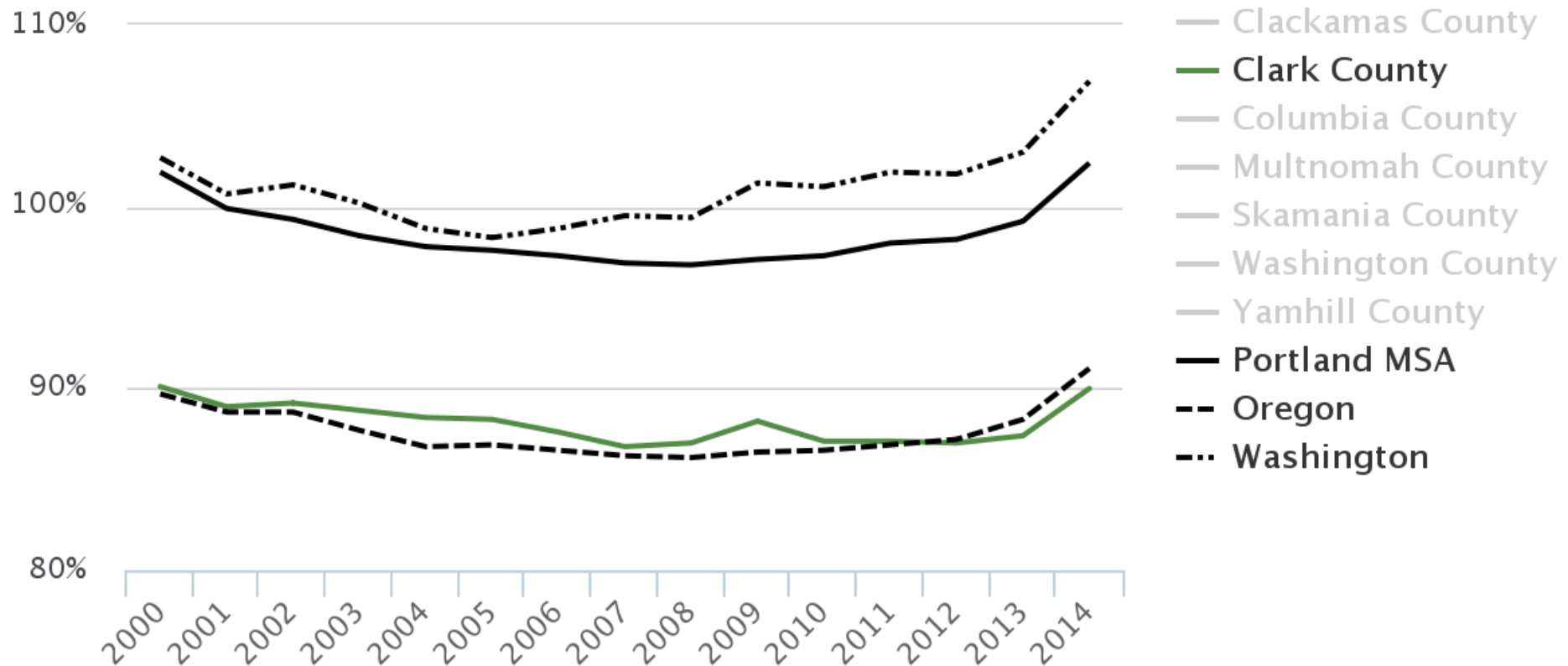
Annual per capita income, by race (alone) and Hispanic origin, Portland MSA, 2010–2014 five-year estimates

Source: US Census, American Community Survey, Table B19301A–I



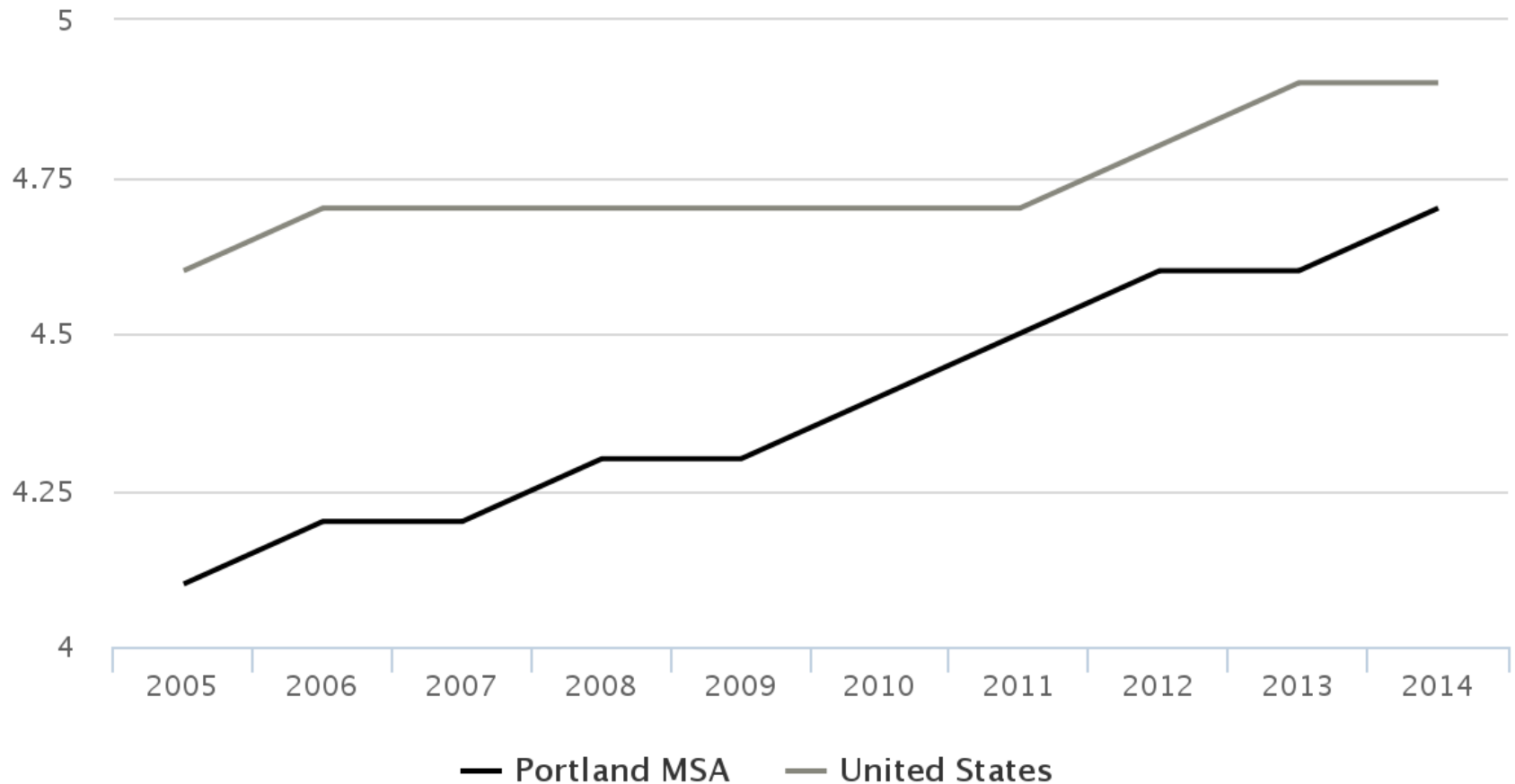
Portland MSA average wage as a percent of US metro average wage, 2001-2014

Sources: Bureau of Economic Analysis, Table CA30



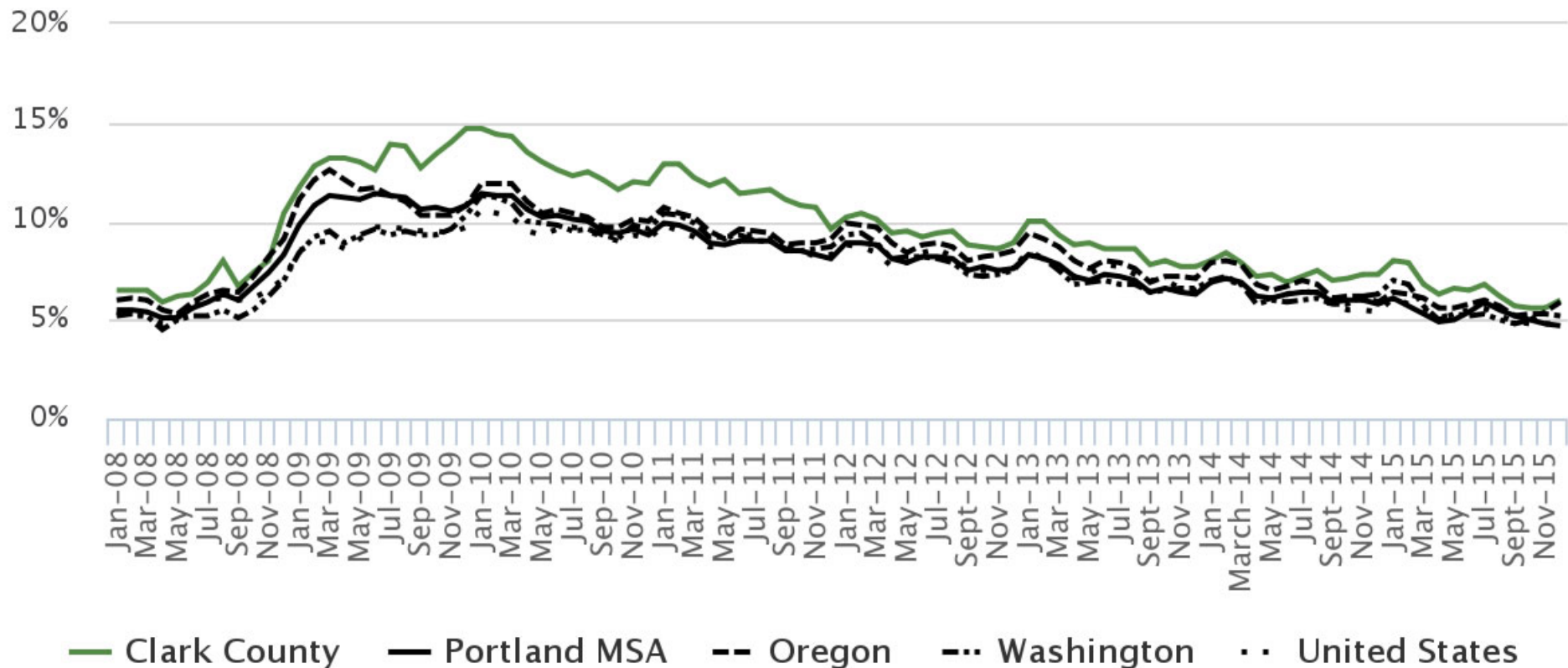
Ratio of wage for 90 percentile wage to 10 percentile wage, 2005-2014

Source: Bureau of Labor Statistics, Occupational Employment Statistics Wage Survey



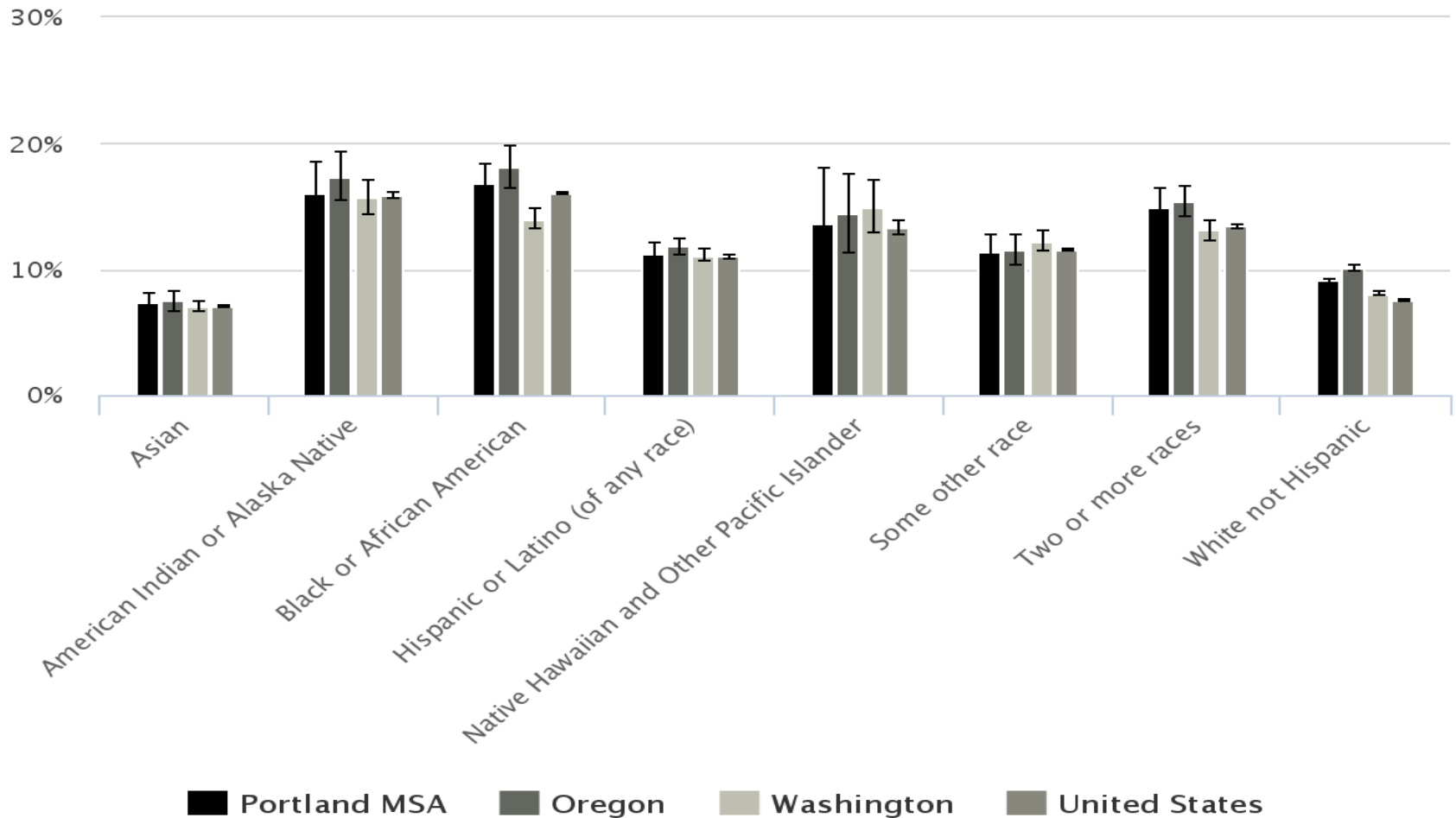
Unemployment, Portland MSA, 2008–2015

Source: Oregon Employment Department; Employment Security Department of Washington State



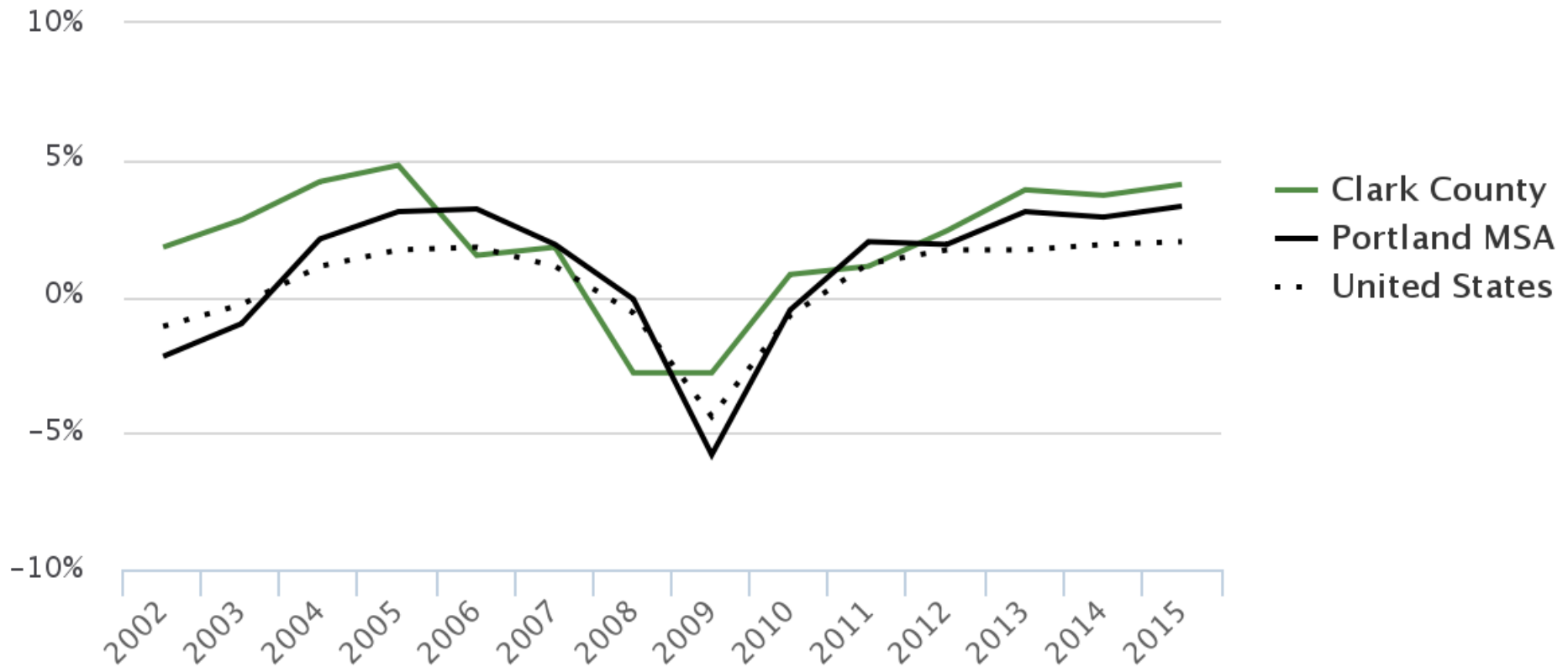
Unemployment by race (alone) and Hispanic origin, Portland MSA, 2010–2014 five-year estimates

Source: US Census, American Community Survey, Table S2301



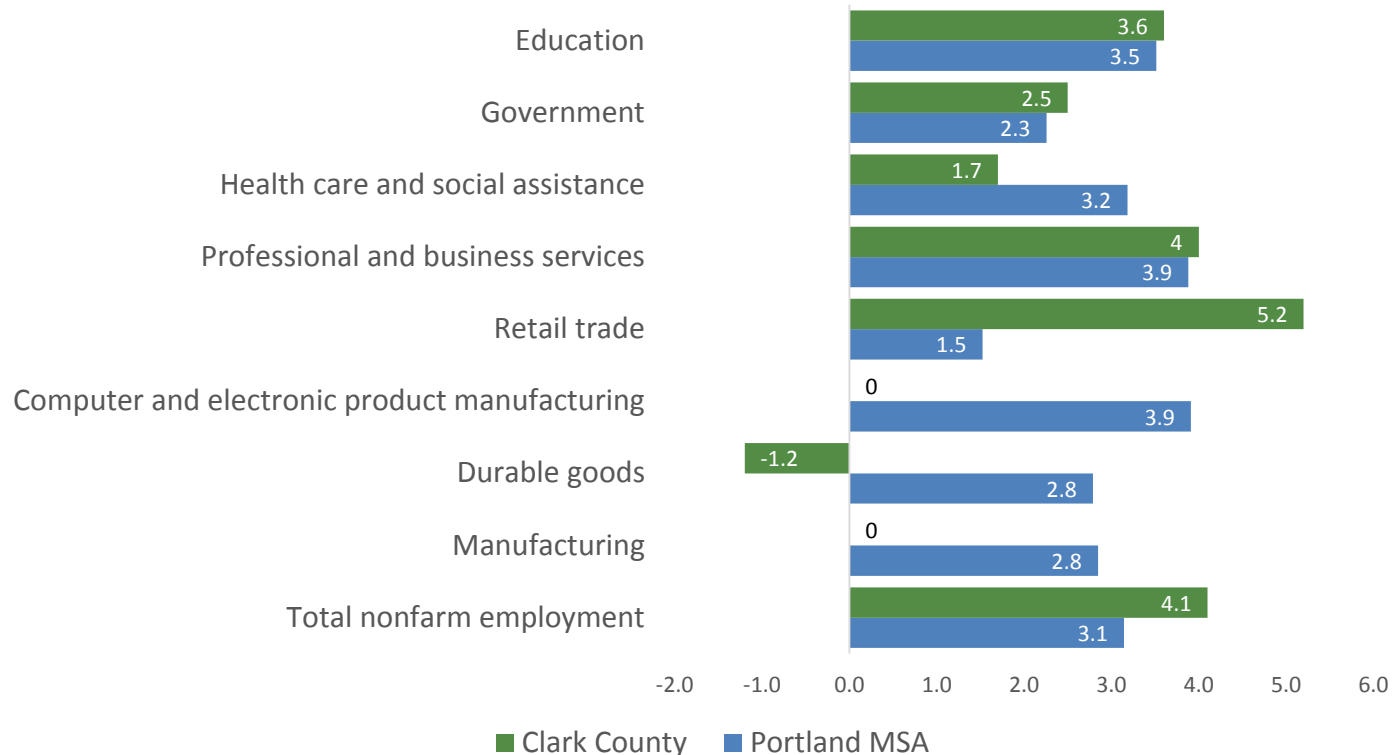
Percentage change in annual average employment, Portland MSA, 2002-2015*

Source: US Bureau of Labor Statistics, Current Employment Statistics



Percentage annual change in total employment by industry, Portland MSA, December 2014 – December 2015*

Source: Oregon Employment Department, Current Employment Statistics; Washington Office of Employment Security, Current Employment Statistics



Percentage of children in poverty, by county, Portland MSA, 2008 and 2014 one-year estimates

Source: US Census, Small Area Income and Poverty Estimates

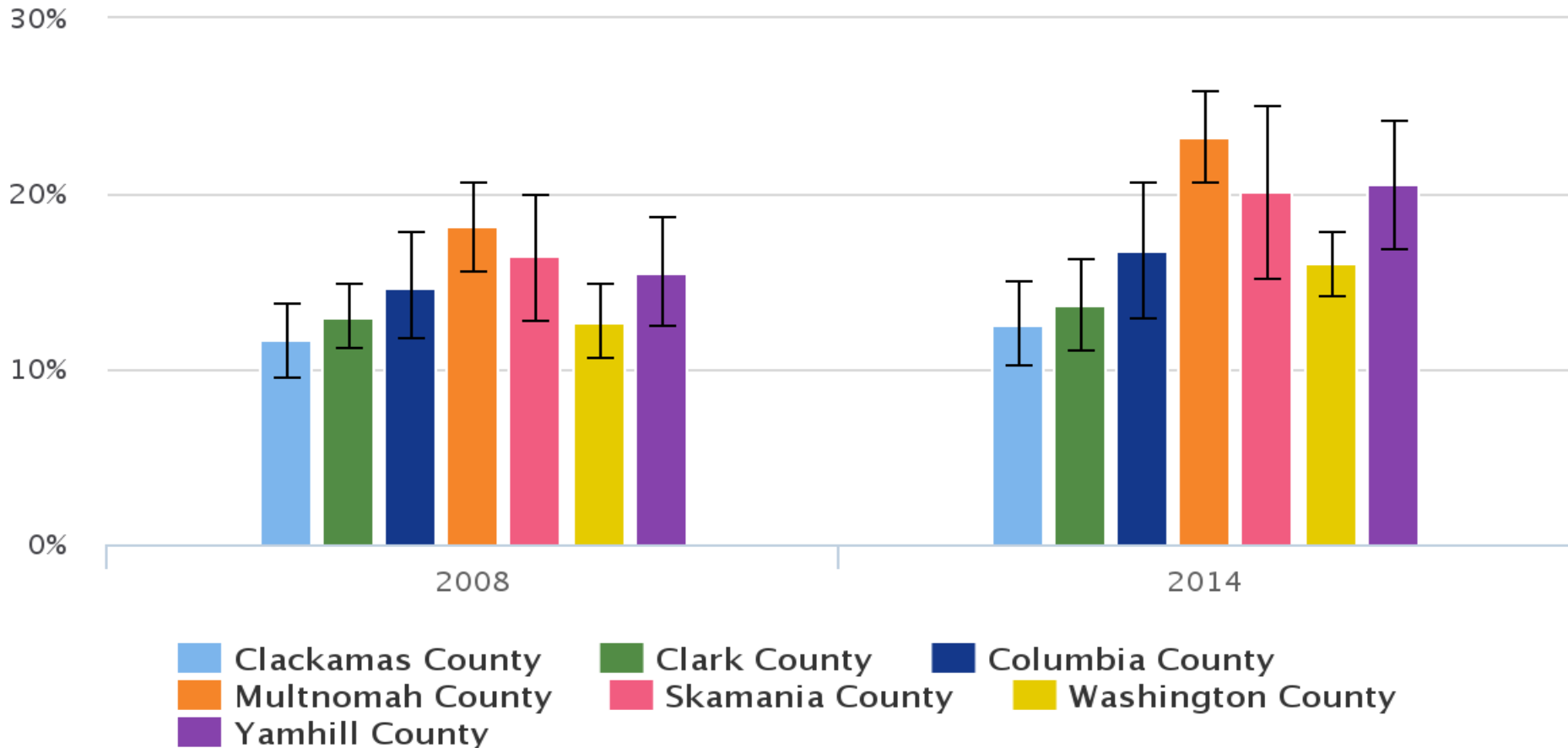
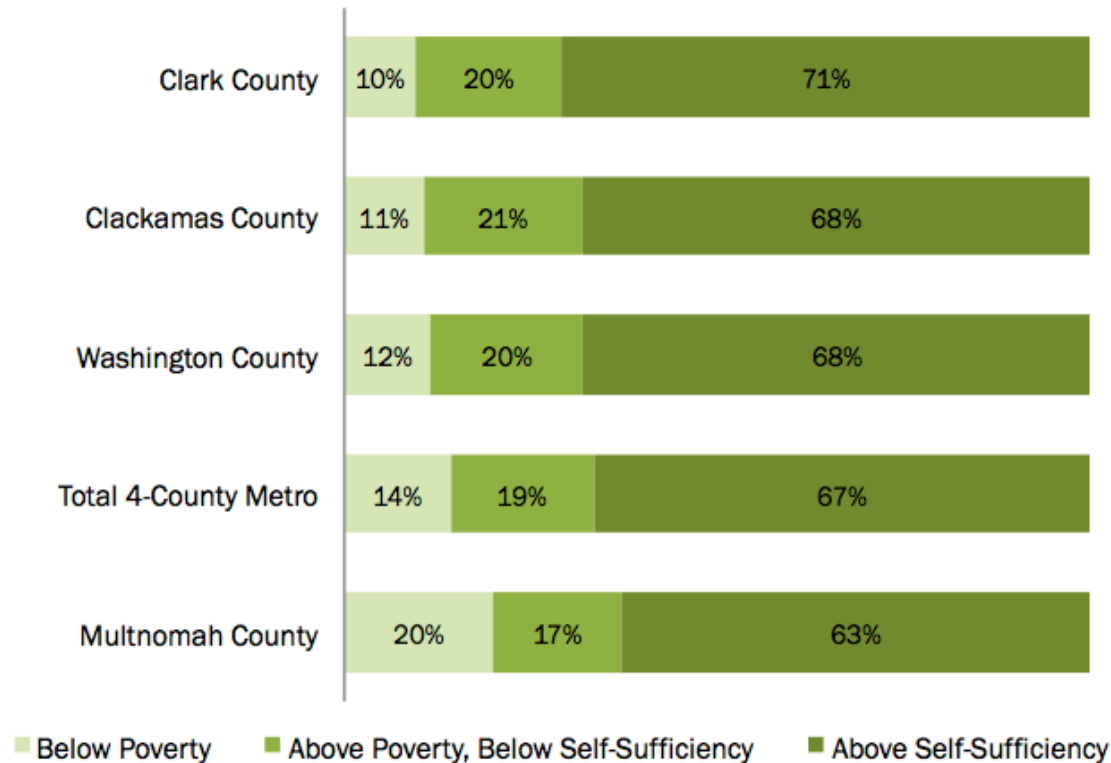


TABLE 1. Self-Sufficiency Standards for select family types, Portland metro counties, 2014

	Adult	Adult +infant	Adult +schoolage +teenager	2 Adults +infant +preschooler	2 Adults +schoolage +teenager	2 Adults +preschooler +schoolage +teenager
<i>Clackamas</i>	\$24,469	\$51,231	\$39,208	\$75,485	\$47,810	\$75,842
<i>Clark</i>	22,223	45,066	41,522	66,124	49,473	70,125
<i>Multnomah</i>	19,993	52,210	33,881	78,164	39,443	74,780
<i>Washington</i>	24,353	51,742	38,799	76,258	46,880	76,047

Source: Pearce, D. (2014) Self-Sufficiency Standard for Oregon (Washington), 2014. Center for Women's Welfare, University of Washington.

Percent of Households by Income Category , 2010-2012

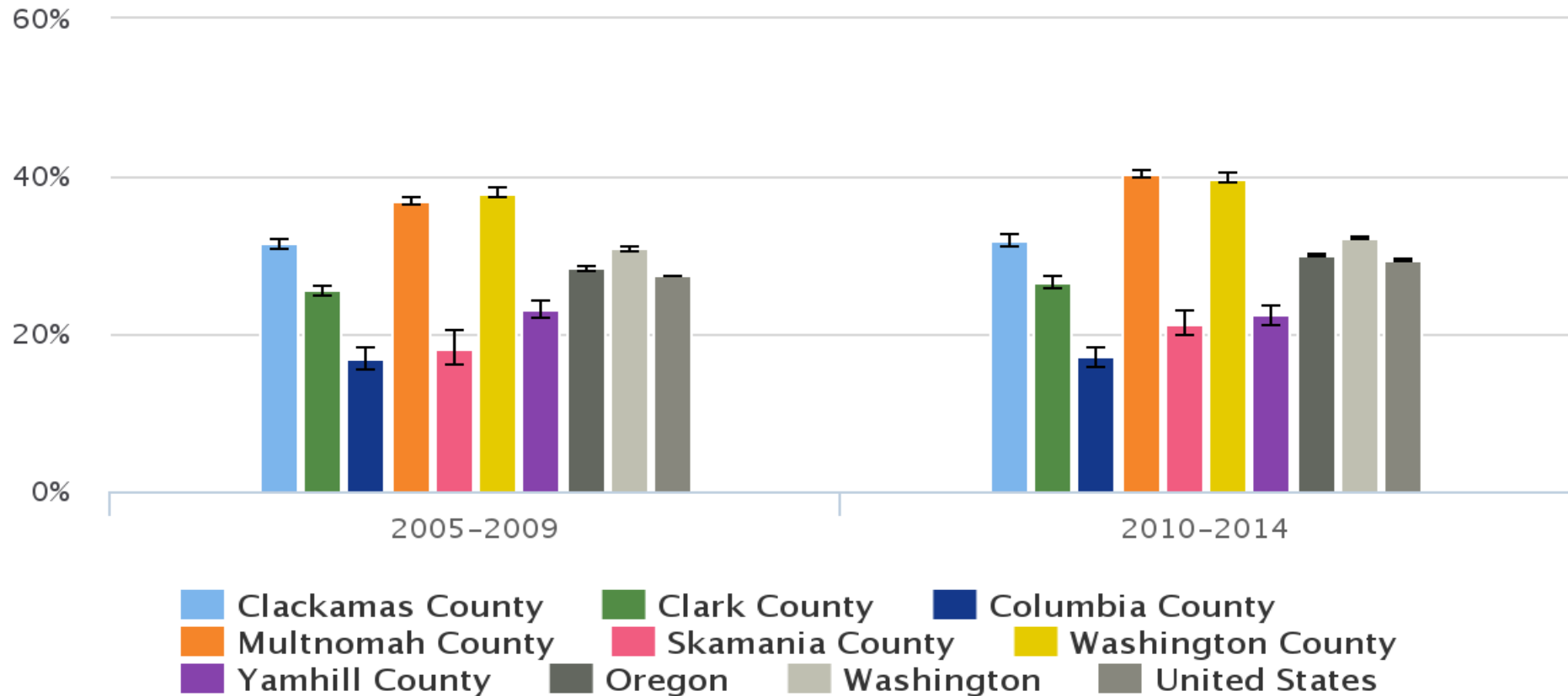


Source: American Community Survey, PUMS data, 2010-2012

Note: Although ACS estimates should be interpreted with the accompanying margin-of-error (MOE), due to resource constraints, the MOE values are not reported here

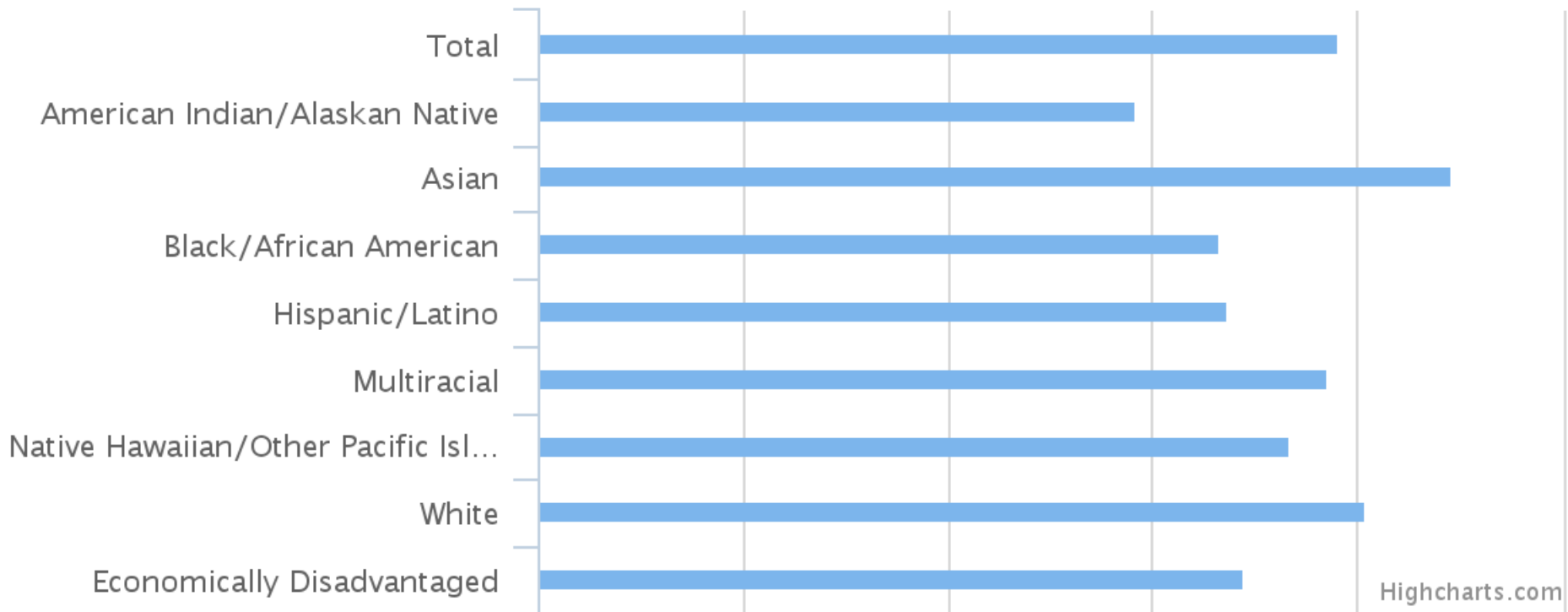
Percentage of adults age 25 and over with a bachelor's or advanced degree, by county, Portland MSA, 2005-2009 and 2010-2014 five-year estimates

Source: US Census, American Community Survey, Table B15003



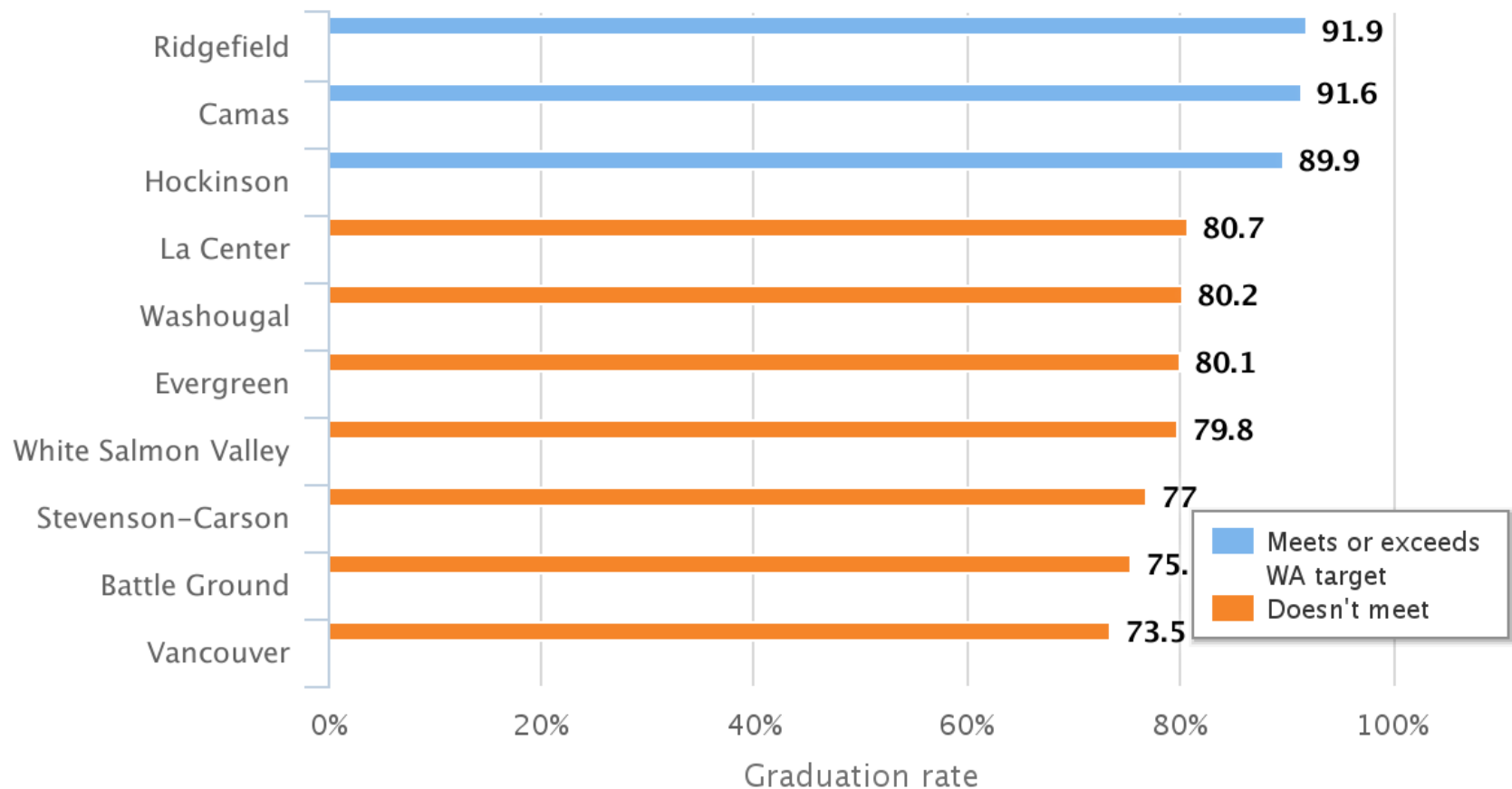
Four year cohort graduation rate, Portland MSA 2013–2014

Source: Oregon Department of Education and Washington Office of Superintendent of Public Instruction



Overall 4-year cohort graduation rate (meets/doesn't meet) Washington State 2013-2014 graduation targets (81.6%)

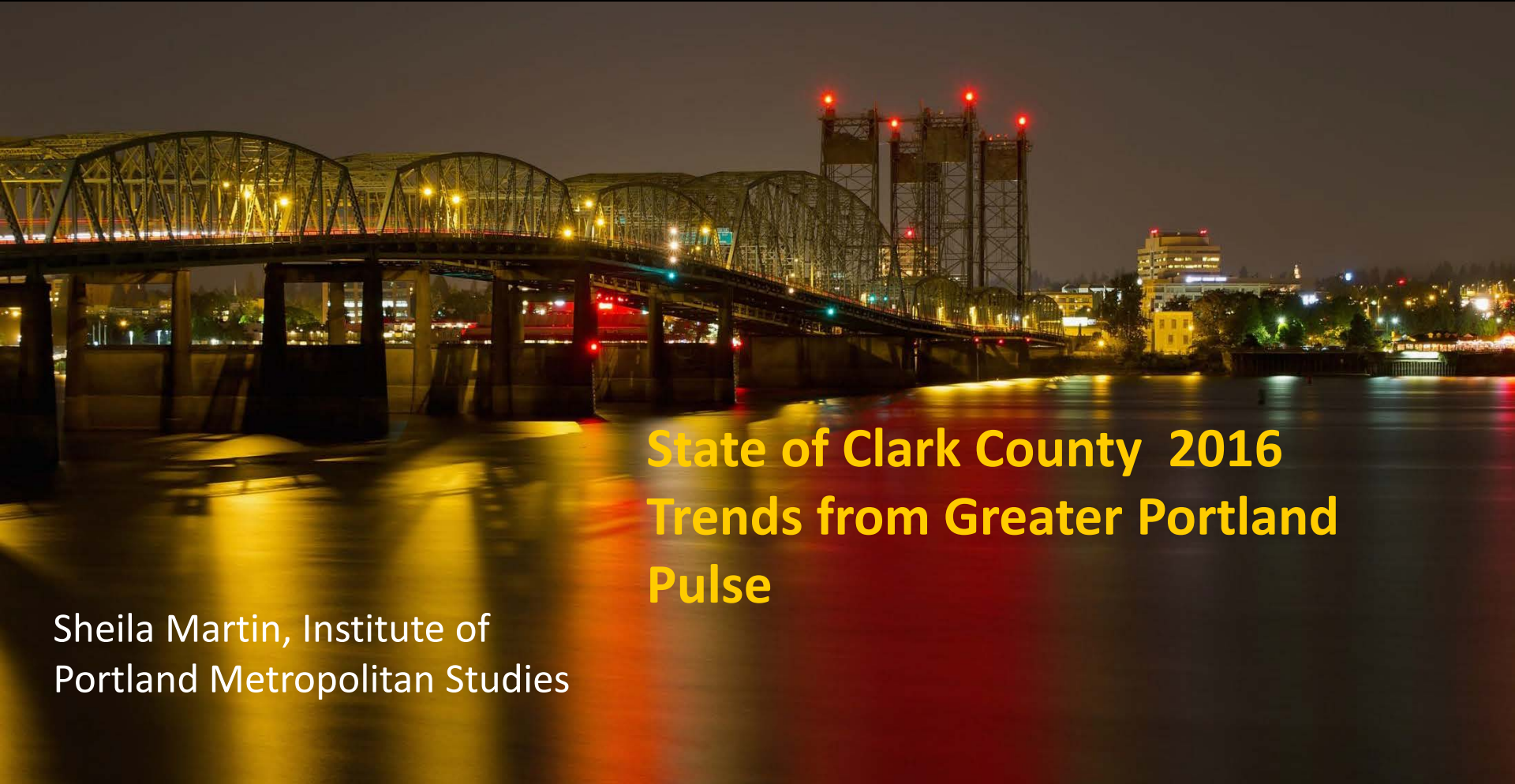
Source: Washington Office of Superintendent of Public Instruction



- What surprised you?
- What seems favorable?
- What worries you?
- What should be our priorities moving forward and why?

Still curious?

Find more on portlandpulse.org

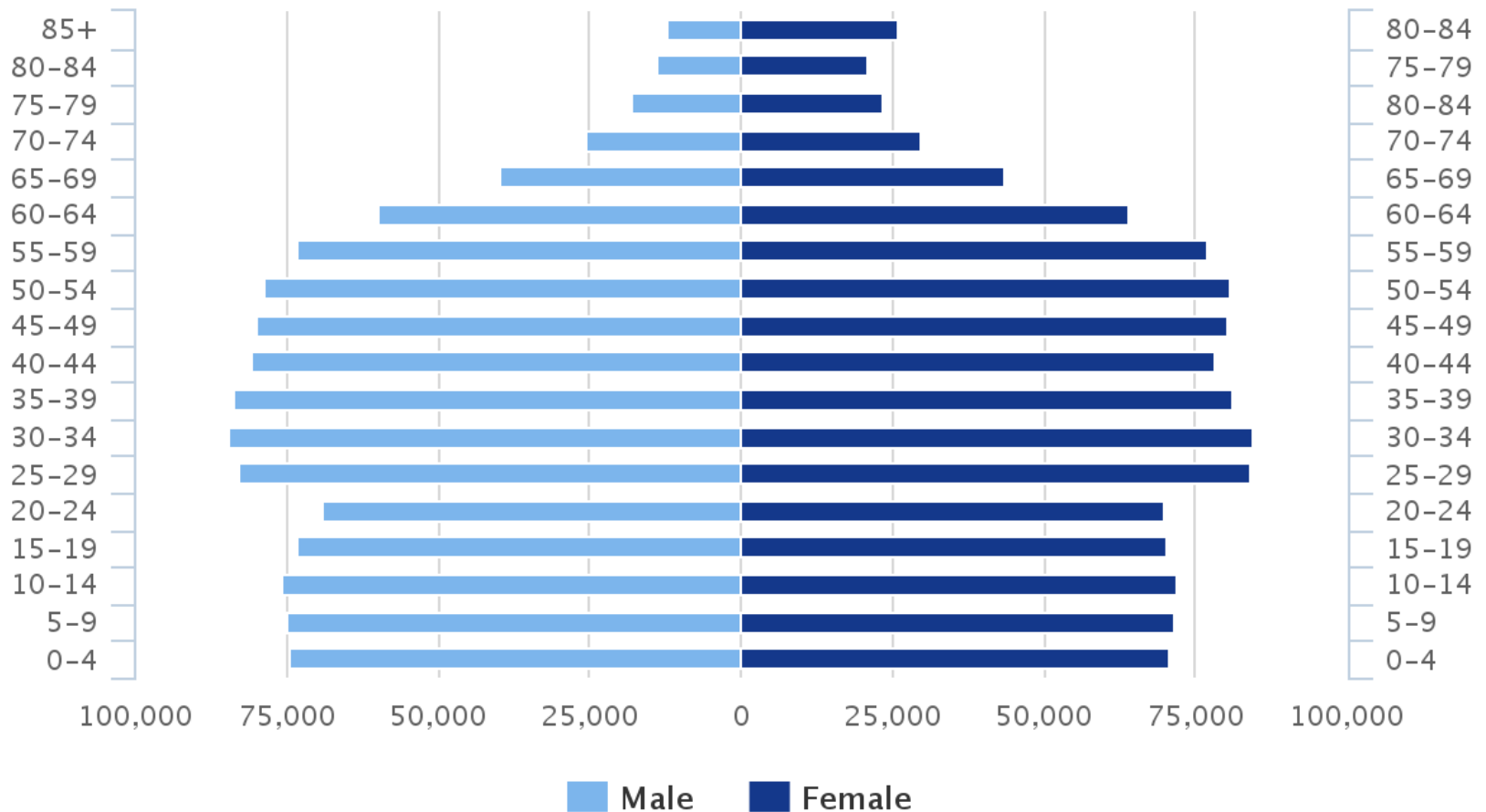


State of Clark County 2016 Trends from Greater Portland Pulse

Sheila Martin, Institute of
Portland Metropolitan Studies

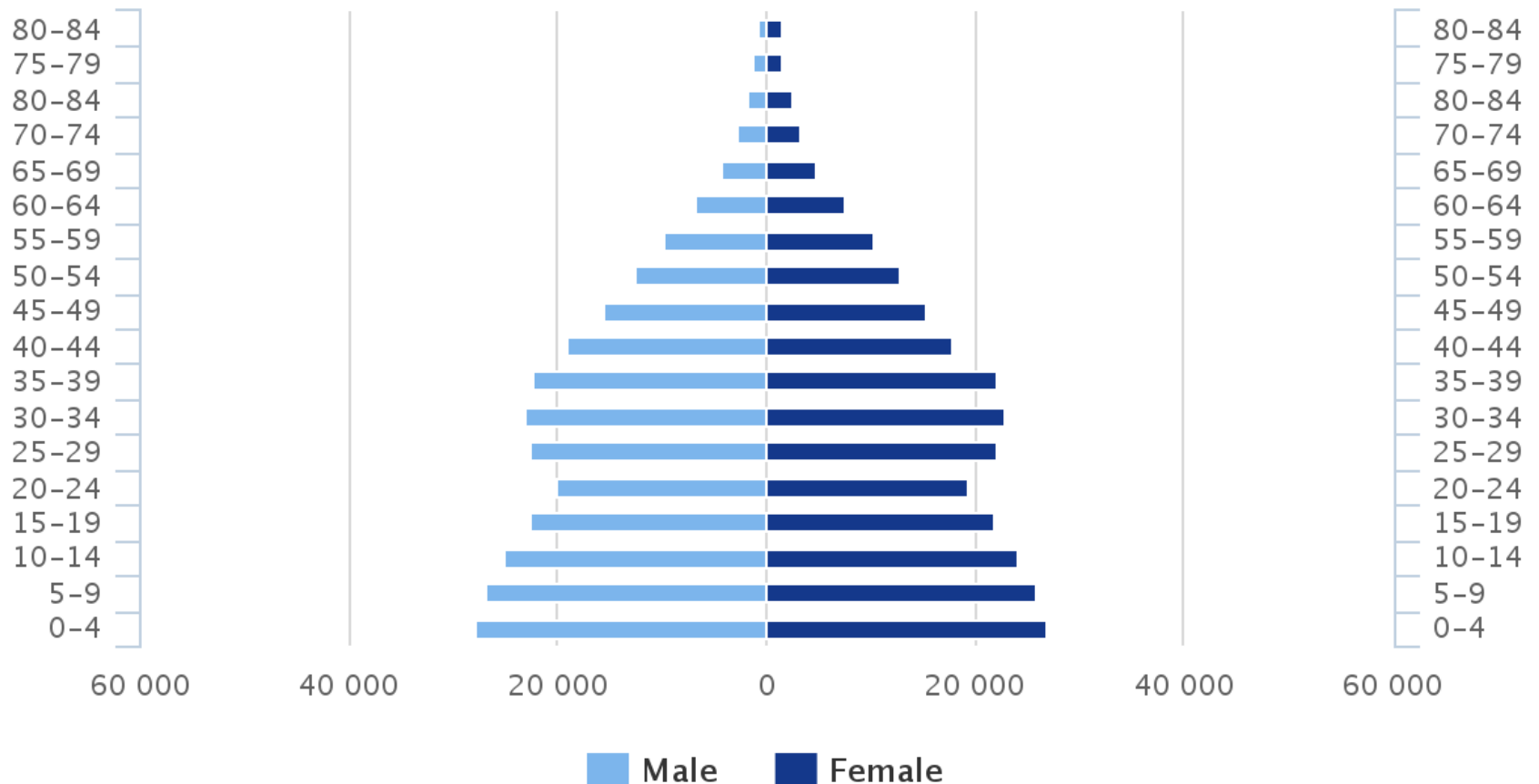
Population distribution by age and sex, Portland MSA, 2010

Source: US Census, Table P12



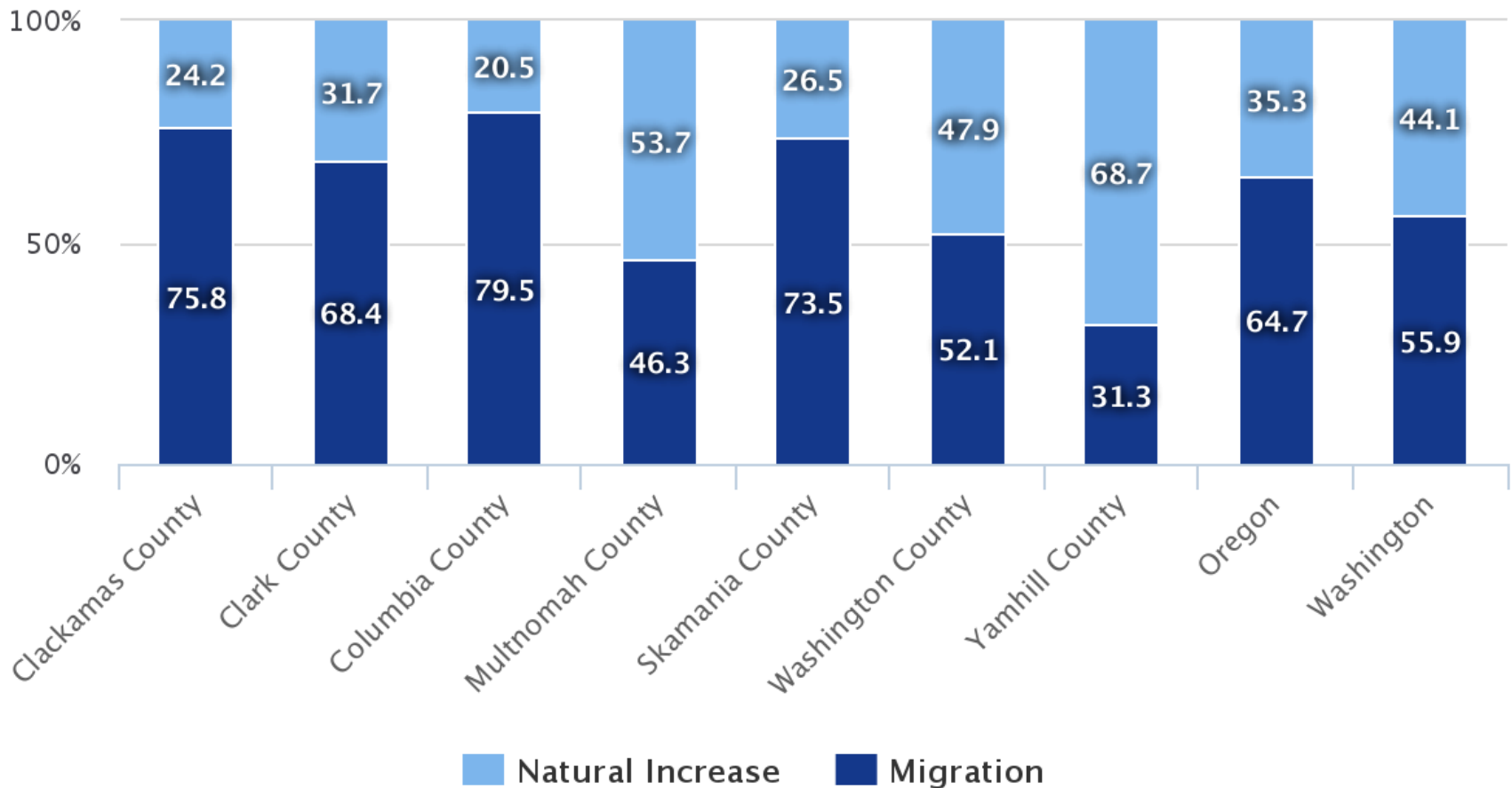
Population distribution by age and sex, non-white population, Portland MSA, 2010

Source: US Census, Table P12; P12I



Percentage of population change due to natural increase and migration, by county, Portland MSA, 2000–2009

Source: US Census, Table NST-EST2009-04

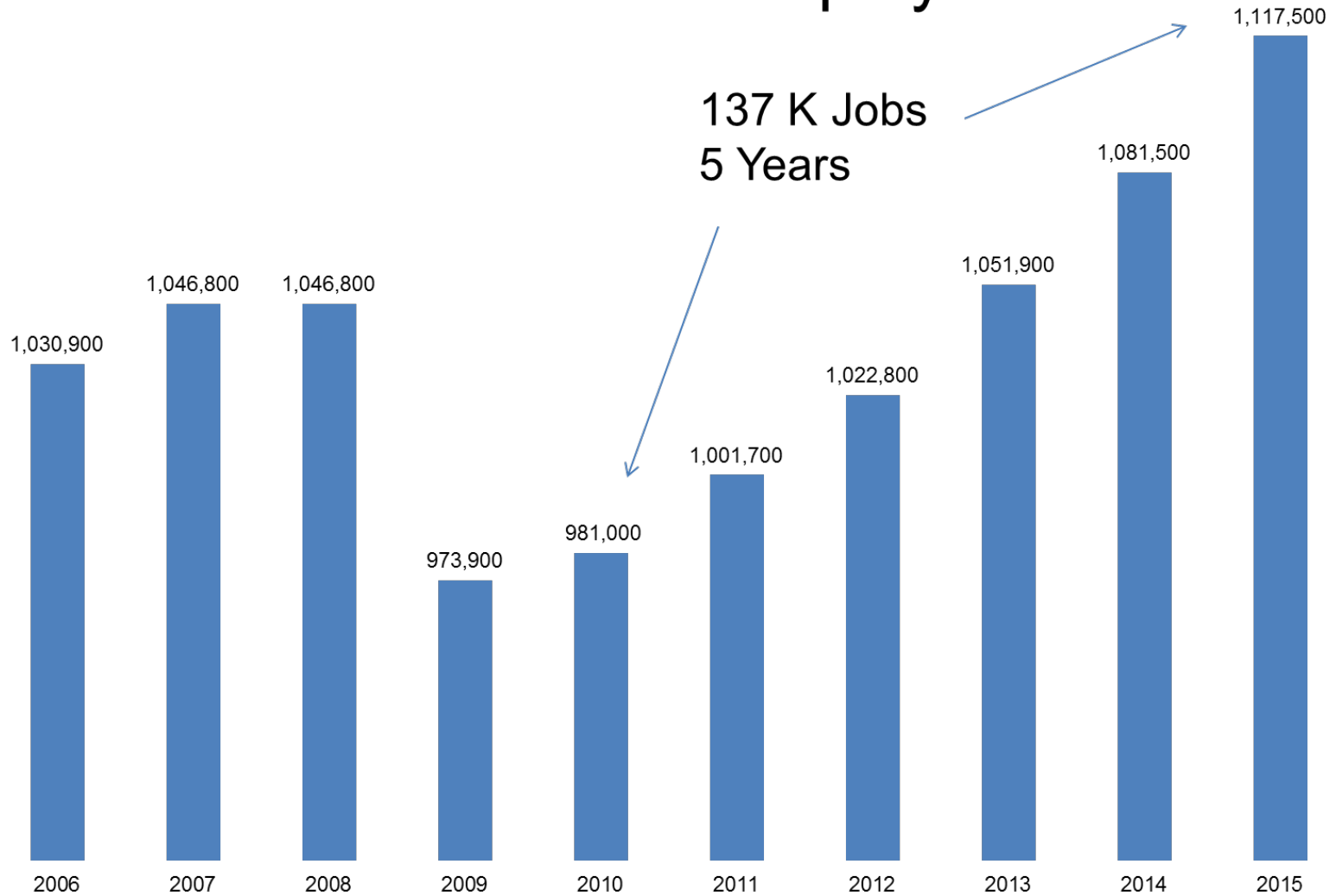


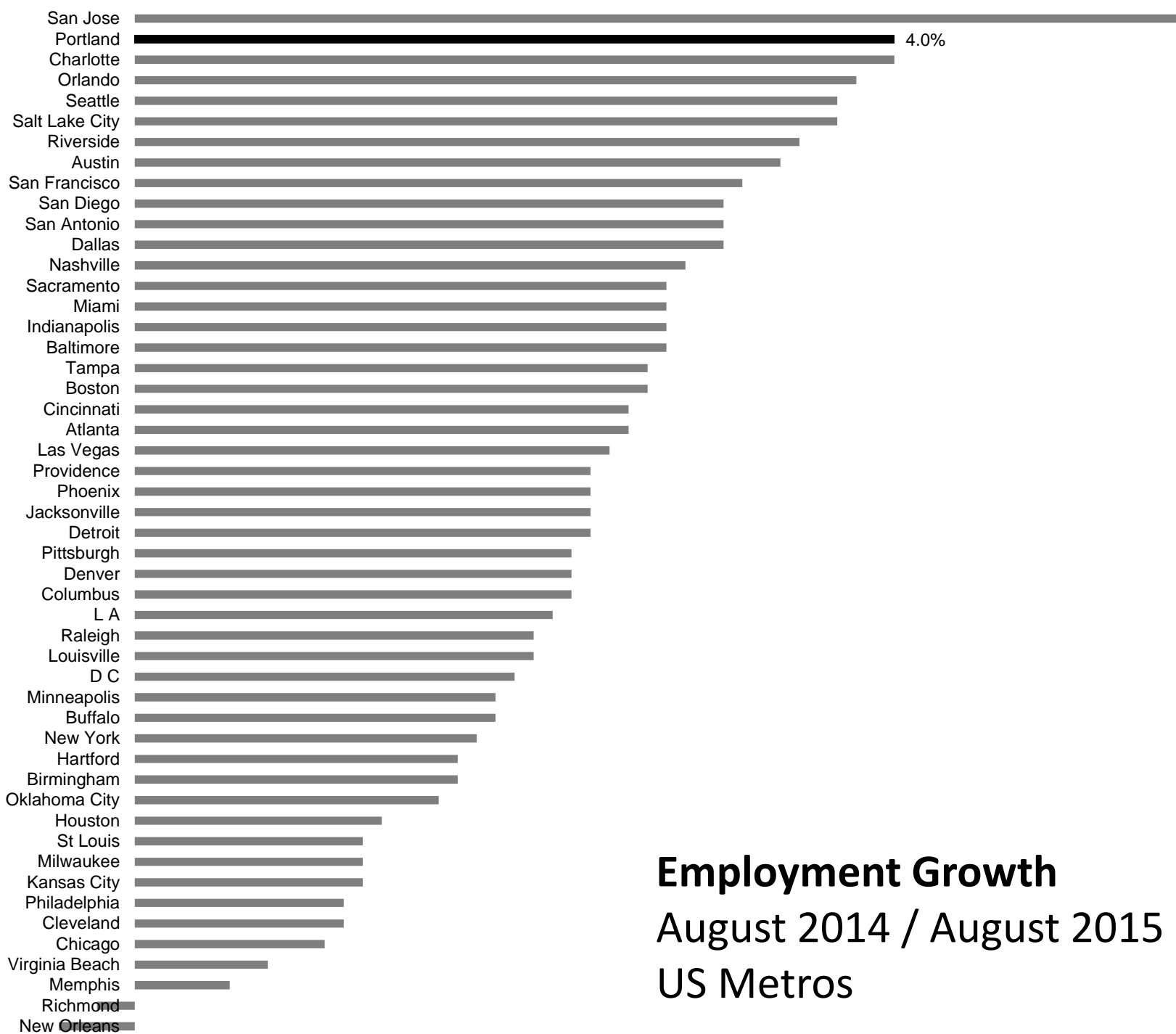


Part III: The Future of Work

Christian Kaylor, Oregon Employment Department

Portland Metro Employment





Employment Growth
 August 2014 / August 2015
 US Metros

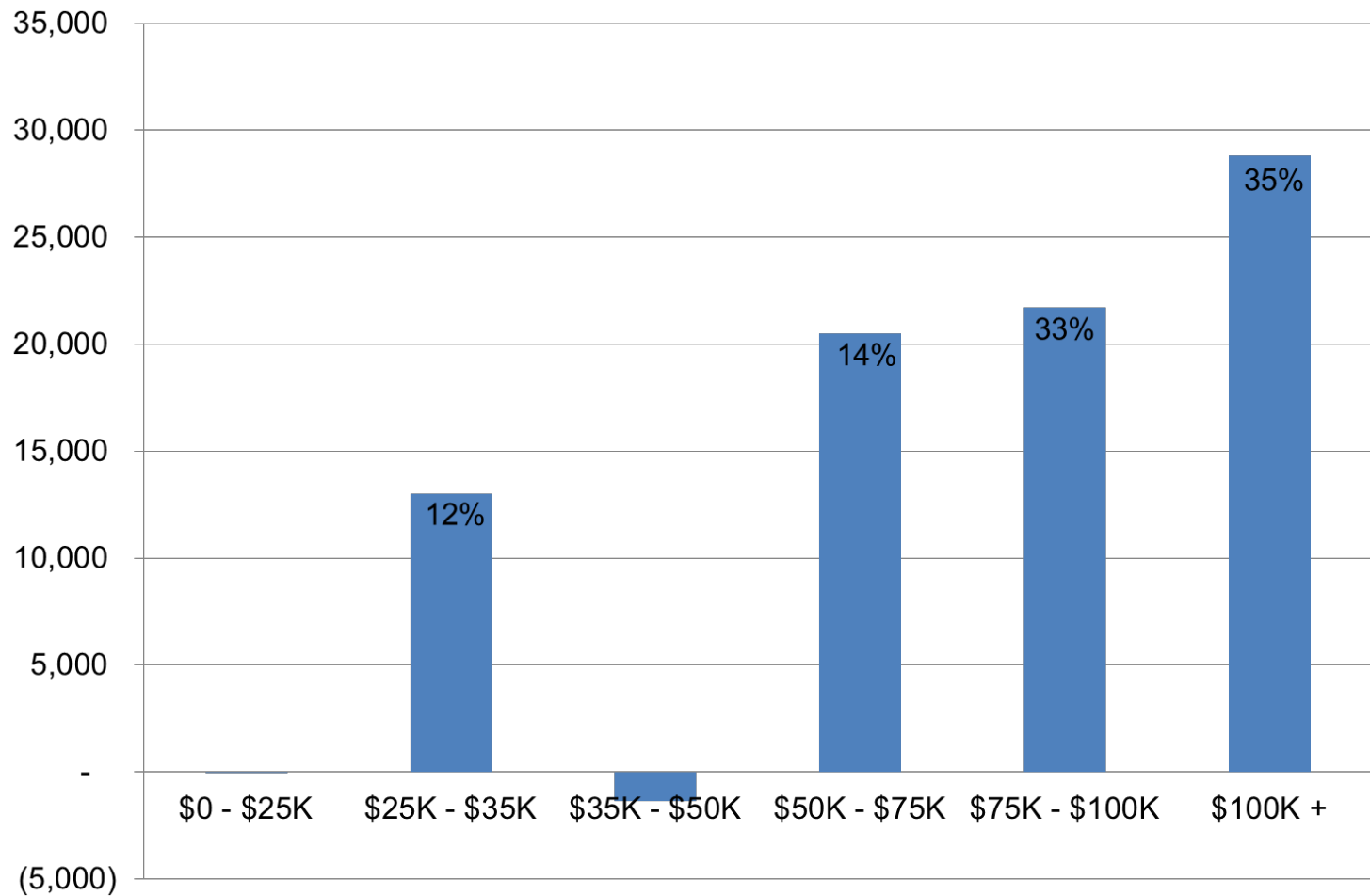
Job Growth by Industry Wages

August 2015 / 2005 Portland Metro

	Industry	Average Wage \$1,000	Job Growth
High Wage	High Tech Manufacturing	\$ 129	14%
	Information	\$ 77	
	Professional and Technical	\$ 77	
	Financial activities	\$ 67	
	Wholesale Trade	\$ 67	
	Ambulatory health care	\$ 65	
Middle Wage	Construction	\$ 60	3%
	Government	\$ 55	
	Manufacturing (non High Tech)	\$ 54	
Low Wage	Employment services	\$ 34	18%
	Retail trade	\$ 30	
	Nursing and residential care	\$ 26	
	Leisure and hospitality	\$ 20	

Worker Growth by Earnings Tier

Portland Metro 2010 to 2014



Shared Values and Beliefs: A Foundation for Collaboration in the Metroscape



Sheila A. Martin, Portland State University
Carolyn N. Long WSU Vancouver
December 9, 2014

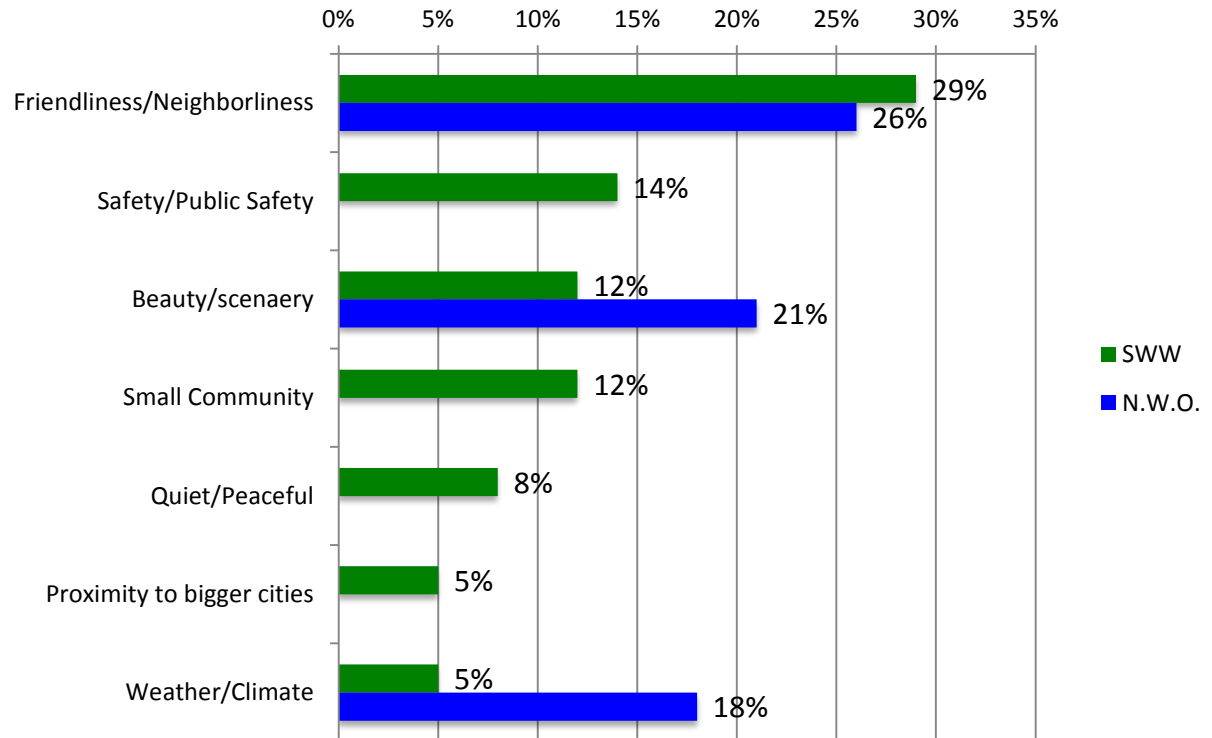


**Institute of
Portland Metropolitan Studies**
Portland State University

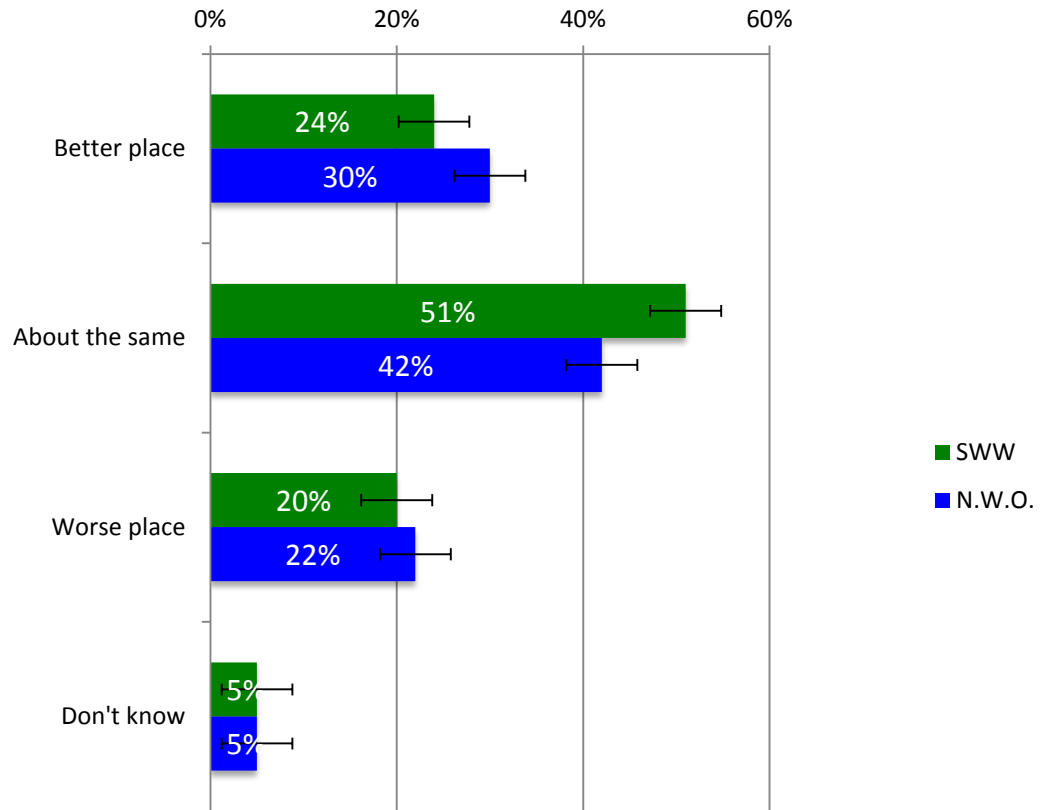
Community Values

What do you value most about living in your community?

Proximity to ocean, mountains, and nature was also important for Northwest Oregonians

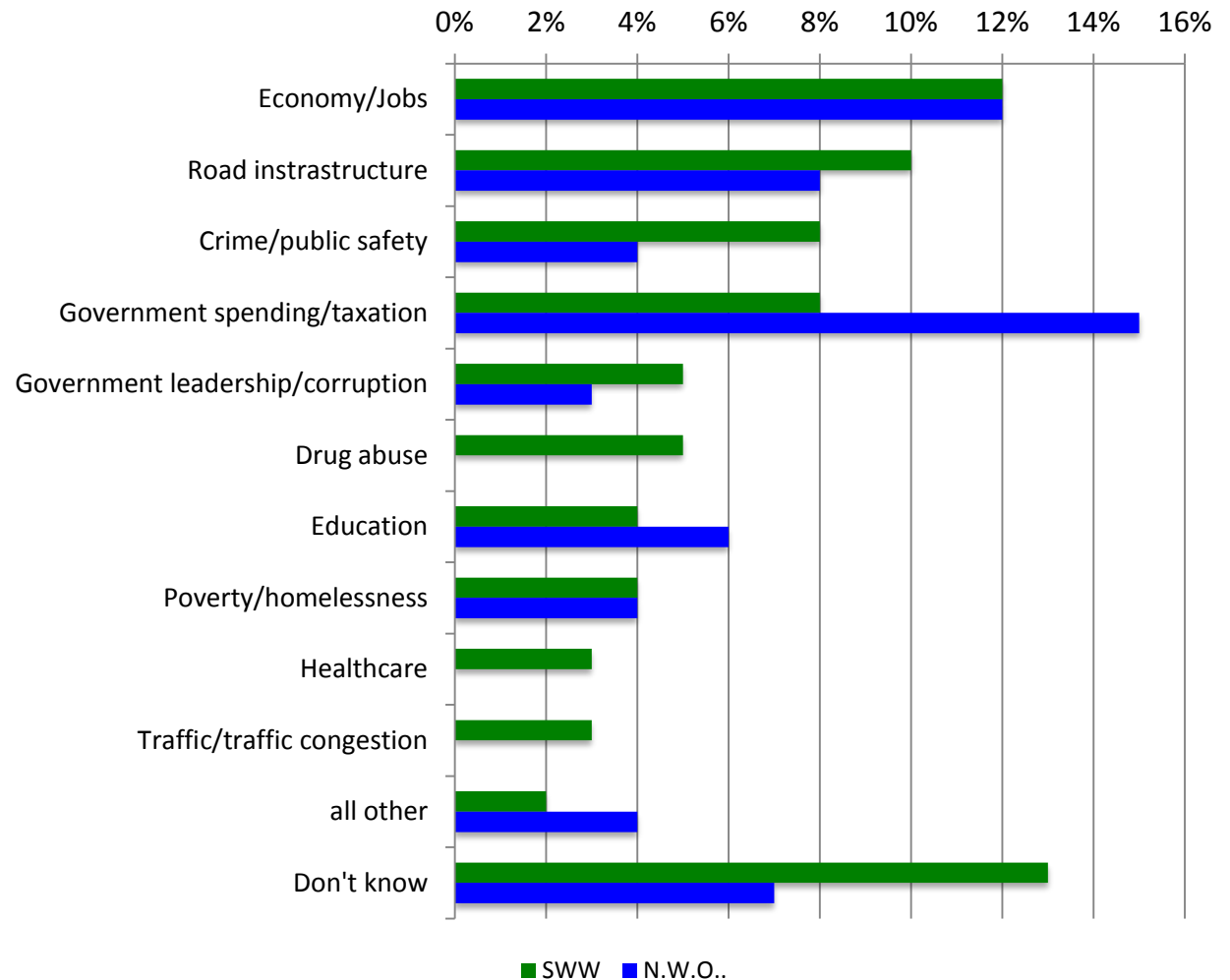


When you think about your community ten years from now, do you think it will be a better place to live, about the same as it is today, or worse than today?



Priorities

What is the most important issue that you want your local government officials to do something about?



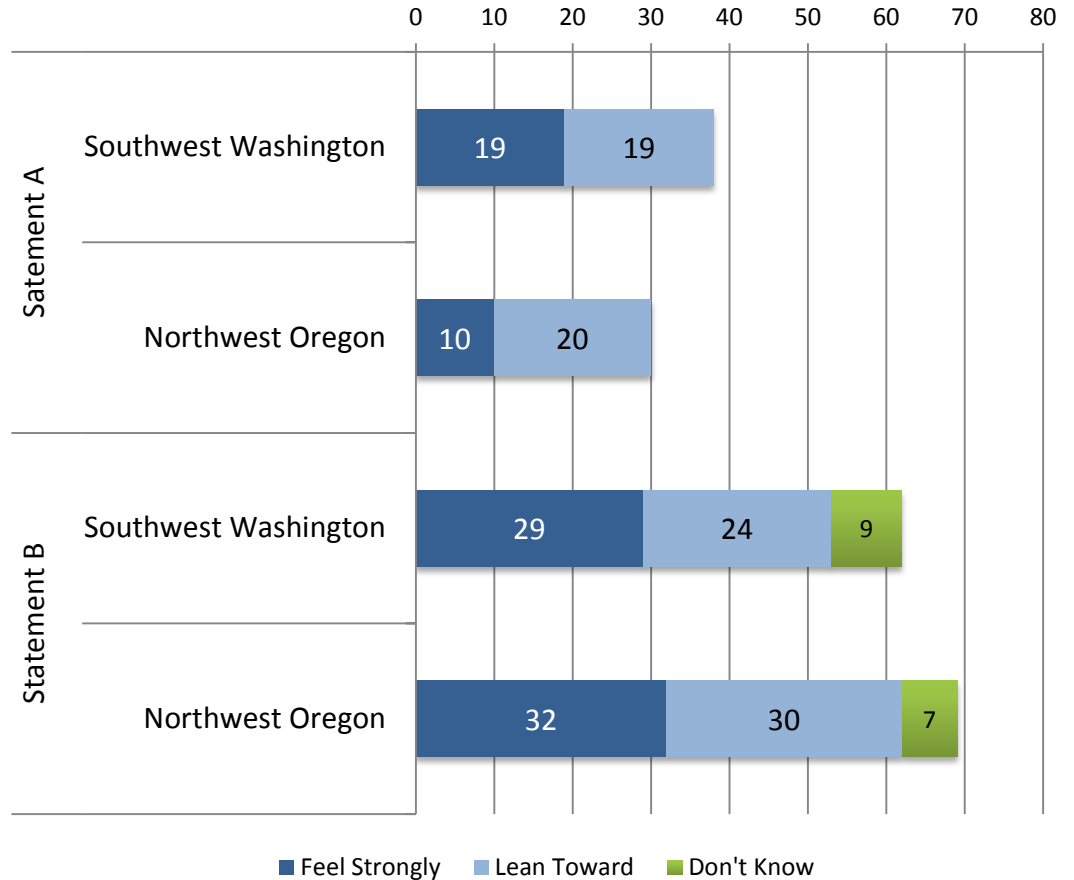
Priorities: Environment or Economy?

Statement A:

Economic Growth should be given priority even if the environment suffers to some extent

Statement B:

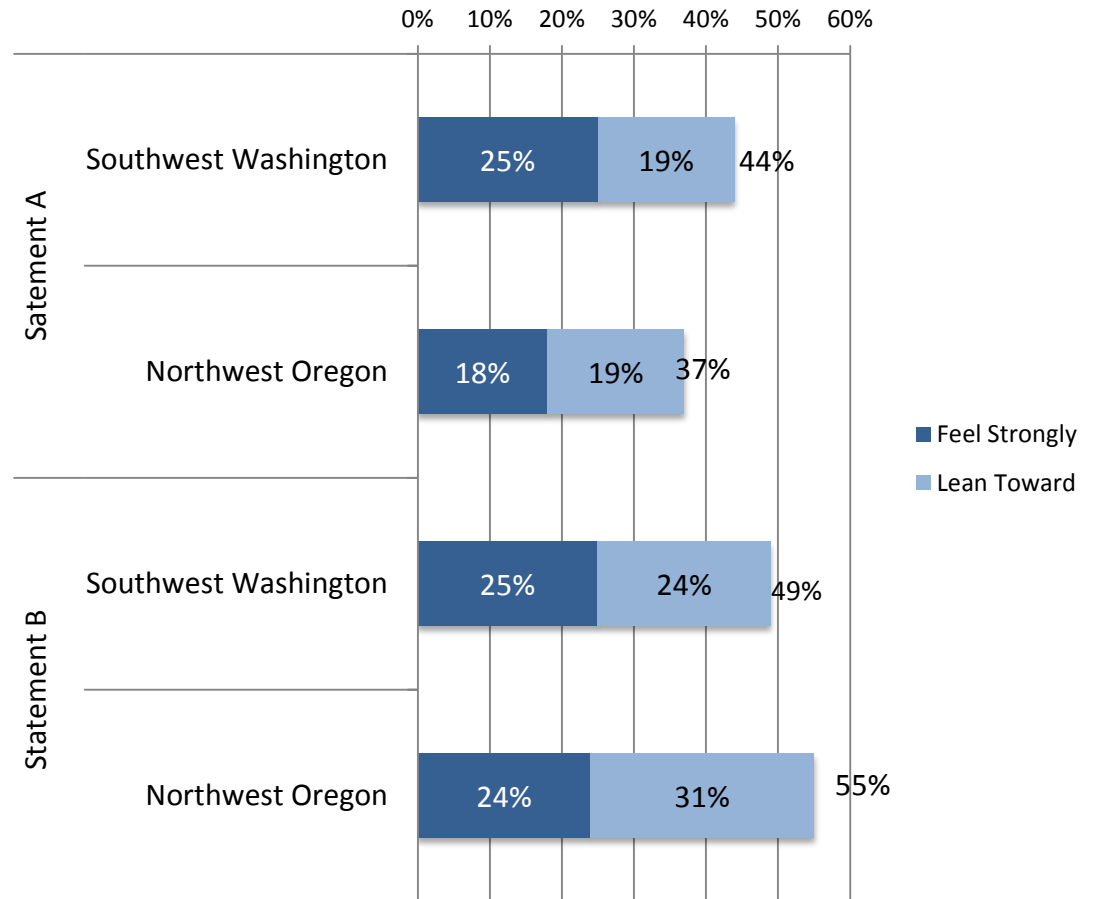
Protection of the environment should be given more priority even at the risk of slowing economic growth



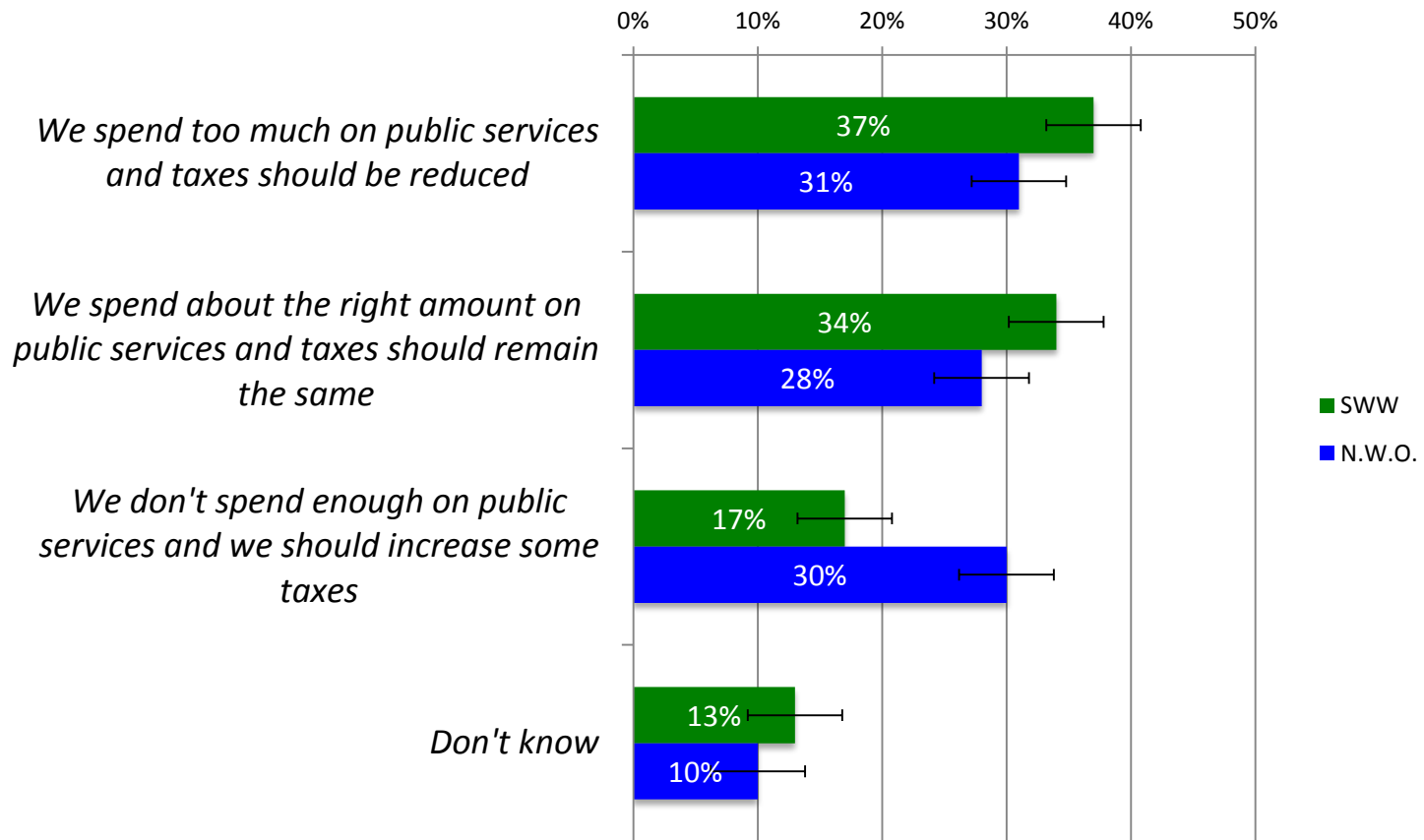
Priorities: Roads or Transit?

Statement A: *We should invest more in roads for cars*

Statement B: *We should invest more in public transit*

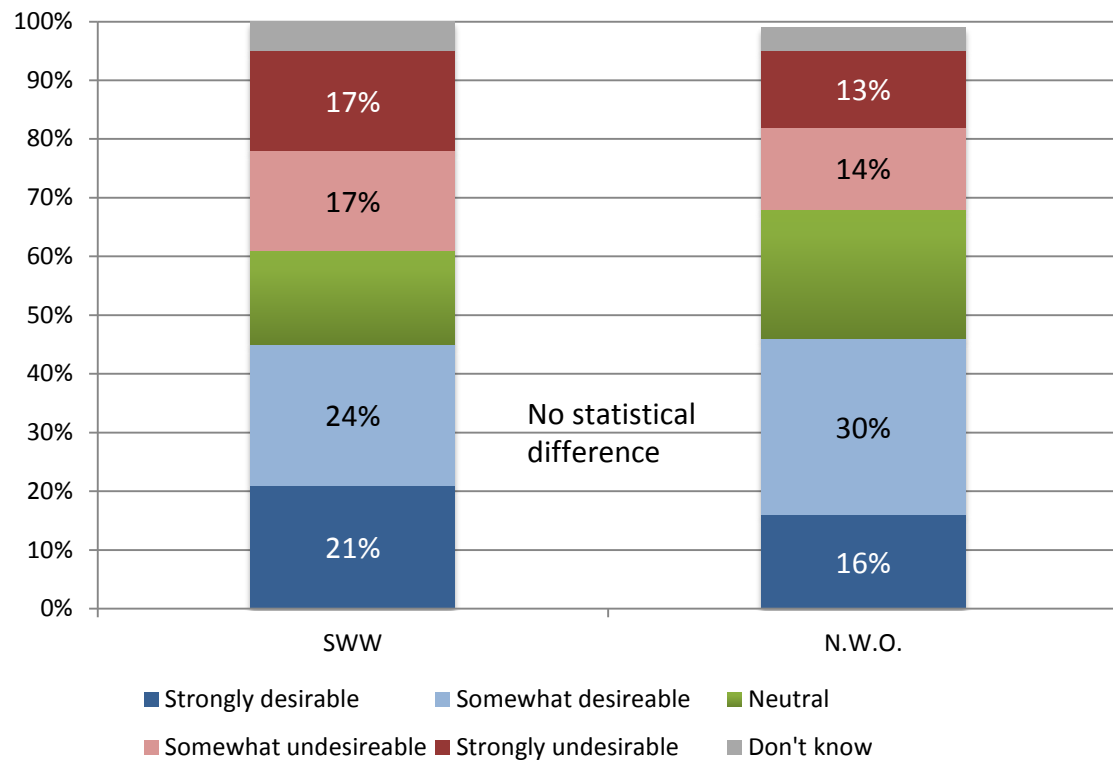


Which comes the closest to how you feel?



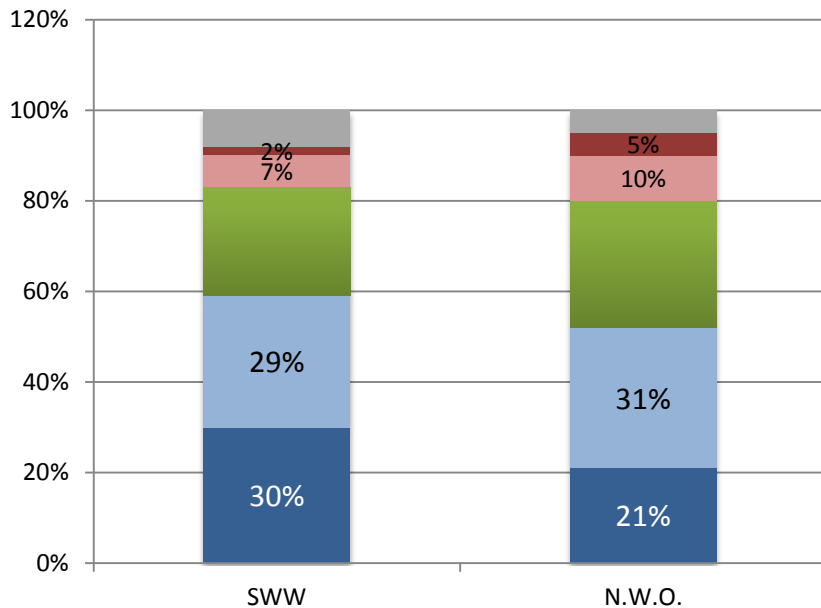
Energy Supply Actions

Shift some funding for road and highway construction toward public transportation such as better bus service and high speed rail projects

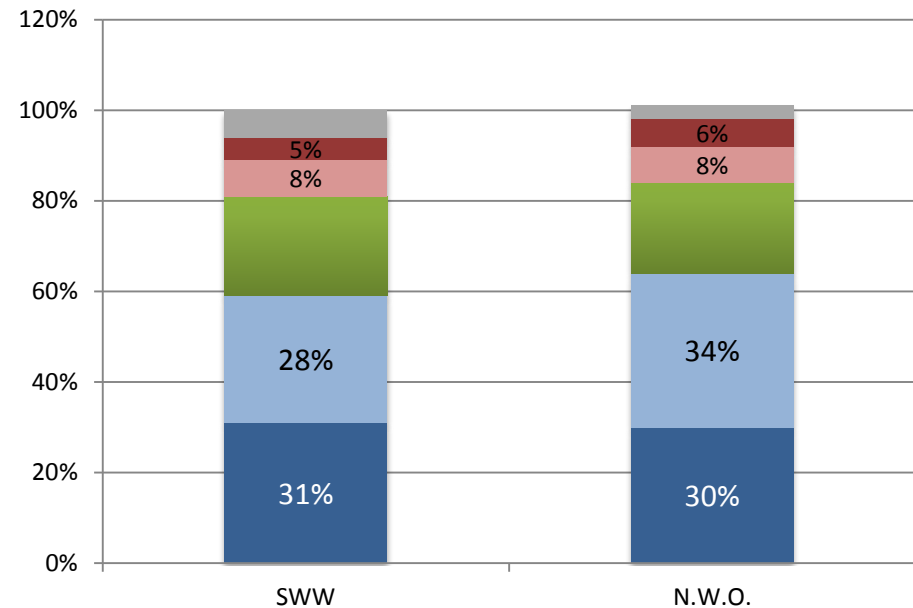


Economic Development Actions

Build and communicate a pro-business attitude in local and state government



Build and communicate a pro-environment attitude in local and state government



- Strongly desirable
- Somewhat desirable
- Neutral
- Somewhat undesirable
- Strongly undesirable
- Don't know

Discussion

- Are there significant differences in *values*?
- Are there significant differences in *priorities*?
- What surprised you?