

Portland State University

**PDXScholar**

---

OHSU-PSU School of Public Health Annual  
Conference

2023 Program Schedule

---

Apr 4th, 3:35 PM - 3:45 PM

# Investing in Family Planning, Education, and Empowering of Women and Girls to Mitigate the Impact of Climate Change: An Exemplary Case of Rwanda.

Adjoa N. Manu  
*OHSU PSU School of Public Health*

Follow this and additional works at: <https://pdxscholar.library.pdx.edu/publichealthpdx>



Part of the [Education Commons](#), [Public Health Commons](#), and the [Social Justice Commons](#)

**Let us know how access to this document benefits you.**

---

Manu, Adjoa N., "Investing in Family Planning, Education, and Empowering of Women and Girls to Mitigate the Impact of Climate Change: An Exemplary Case of Rwanda." (2023). *OHSU-PSU School of Public Health Annual Conference*. 11.

<https://pdxscholar.library.pdx.edu/publichealthpdx/2023/Presentations/11>

This Presentation is brought to you for free and open access. It has been accepted for inclusion in OHSU-PSU School of Public Health Annual Conference by an authorized administrator of PDXScholar. Please contact us if we can make this document more accessible: [pdxscholar@pdx.edu](mailto:pdxscholar@pdx.edu).

# Investing in Family Planning, Education, and Empowering of Women and Girls to Mitigate the Impact of Climate Change: An Exemplary Case of Rwanda.

Ma'Adjoa Manu

---

OHSU-PSU School Of Public Health

Annual Conference

April 4th, 2023

# Outline

---

- Project Drawdown
- Rwanda
- The Climate Crisis
- Investing in family planning and education
- The Benefits of the investment

# Project Drawdown

---

- Drawdown is “the point in time when levels of greenhouse gases in the atmosphere stop climbing and start to steadily decline” (Project Drawdown, 2020).
- Project Drawdown solutions use feasible technologies and practices to model scenarios that promote societal change that reduce greenhouse gas emissions between 2020 and 2050.
- For family planning and education, two scenarios were compared.

# Project Drawdown

---

## SCENARIO 2

- ❑ Increased investments in and adoption of voluntary family planning and universal education.
- ❑ Nearly 70 gigatons of carbon dioxide equivalent emission reduction by 2050.

## REFERENCE SCENARIO

- ❑ No additional investments and a continuation of current barriers to family planning and education
- ❑ The status quo or all other things being equal

# Rwanda: Resilience and Mitigation



“The Land of 1000 Hills”

MacDermot, G. E. (2017, March 17)



Lake Kivu Serena Hotel, Rwanda

Timbuktu Travel. (n.d.)

# Kwita Izina - The Annual Naming Ceremony of The Gentle Vegetarian, Mountain Gorilla

*Conservation is Life*



Conciatore, J. (2021, October 25)  
Gorilla Doctors Staff. (2017, September 4)  
Nakisozi, C. (2019, September 6)

# 100 days of the Rwanda 1994 Genocide



The genocide claimed the lives of at least 800,000 people, mostly Tutsi.



# “Never Again” – Kigali Genocide Memorial



A Special **Children Memorial** dedicated to the children whose lives were ended viciously during the genocide.

# “Never Again” – Kigali Genocide Memorial

“A visit to our loved ones to spend time together”



## Why Rwanda?

What has it got to do with Climate Change?



## During the War

- Rape of women and girls was weaponized.
- Women were disproportionately burdened at home.
- Increased morbidity rate.
- Women and girls could not go to school or pursue higher education.
- Difficult for women to be independent.

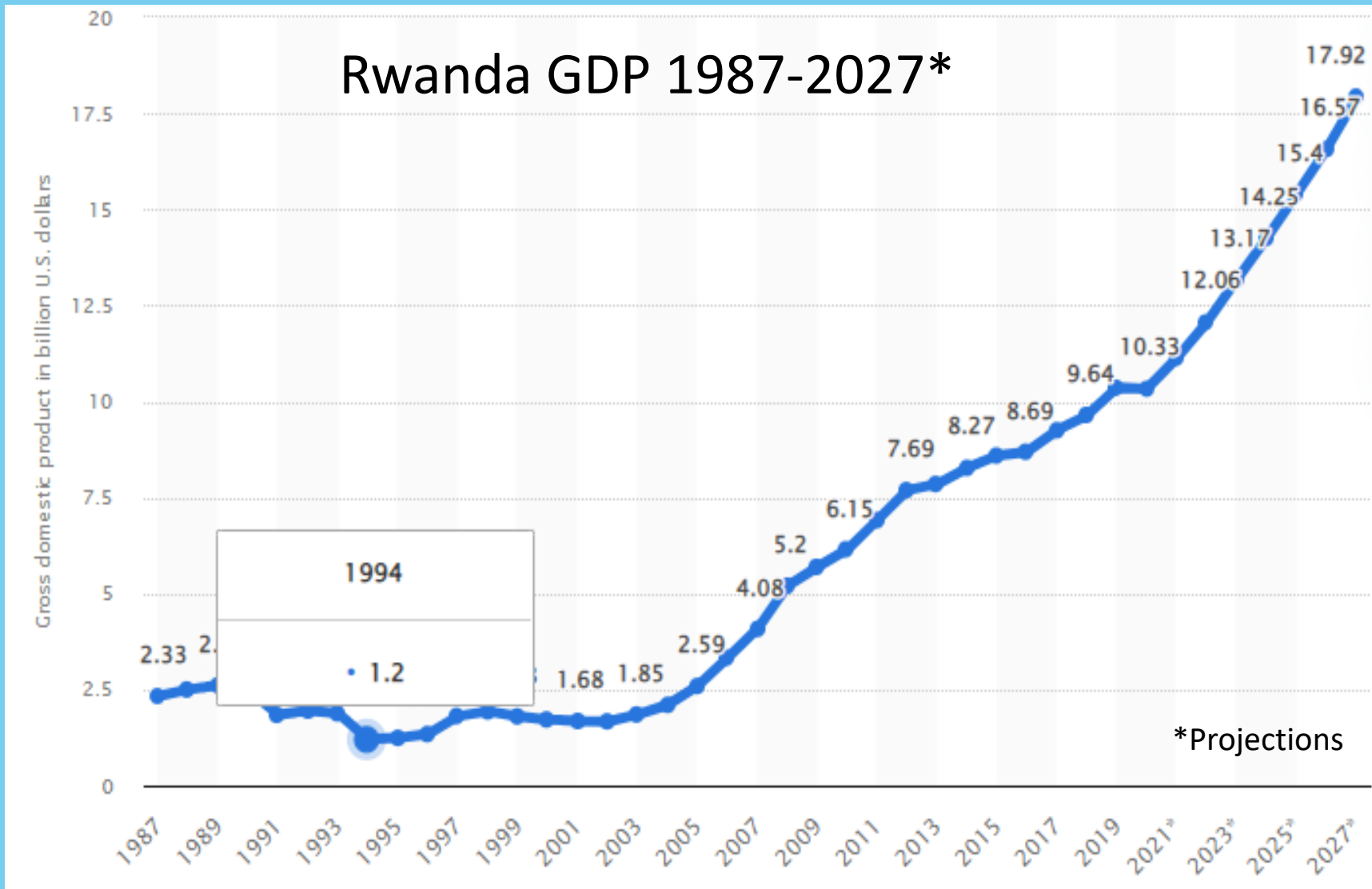
## Why Rwanda?

What has it got to do with Climate Change?



## After the War

- ❑ The government focused on gender development.
- ❑ Provided opportunities and finance for women's education.
- ❑ Currently, 61% of women serve in Rwanda's parliament.
- ❑ Rwandan women are leaders in business and in all sectors of society and the economy.



- Rwanda is one of the best places to do business in Africa
- Among the top five least corrupt countries in Africa.

# The Climate Crisis

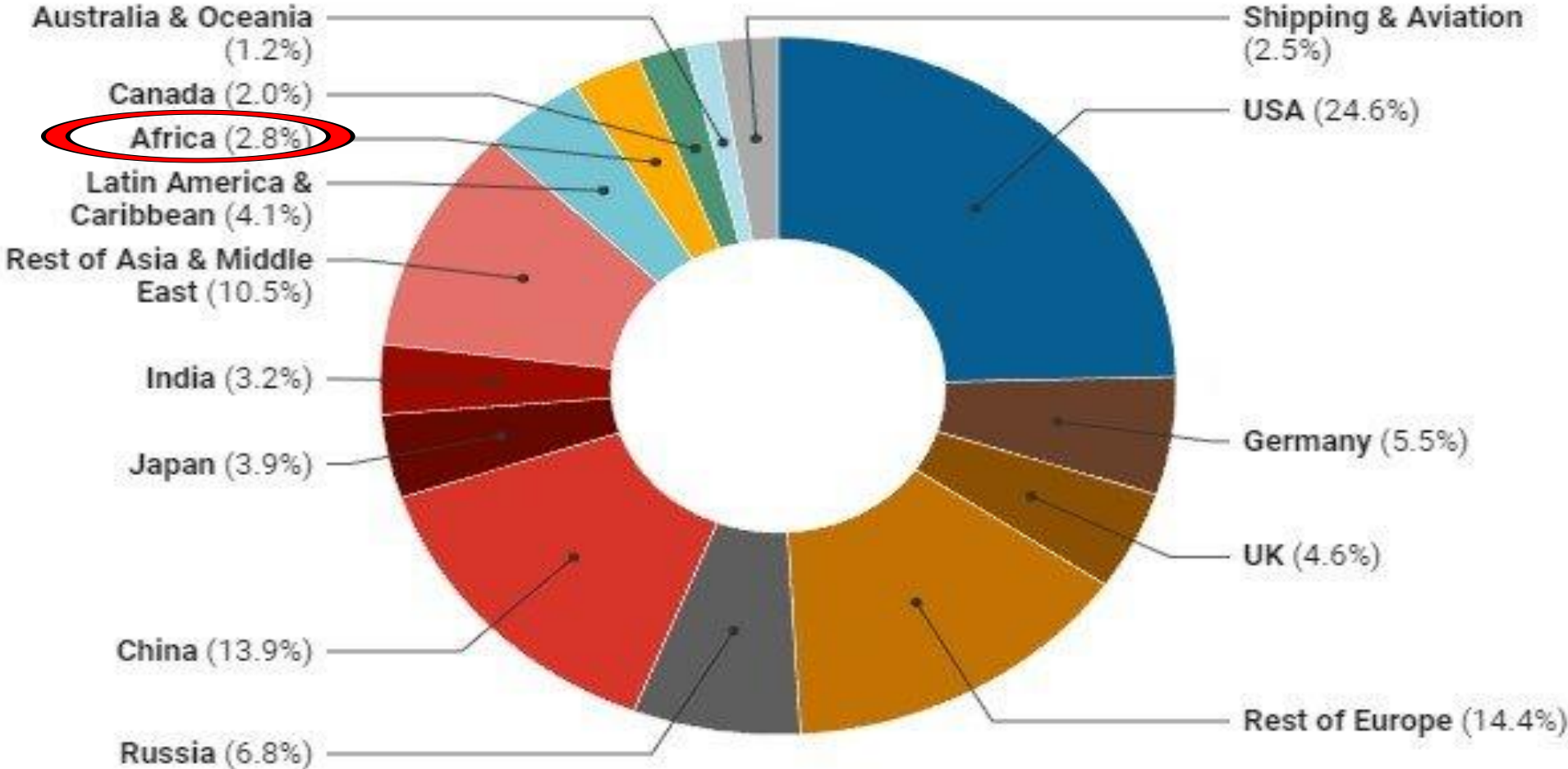
---



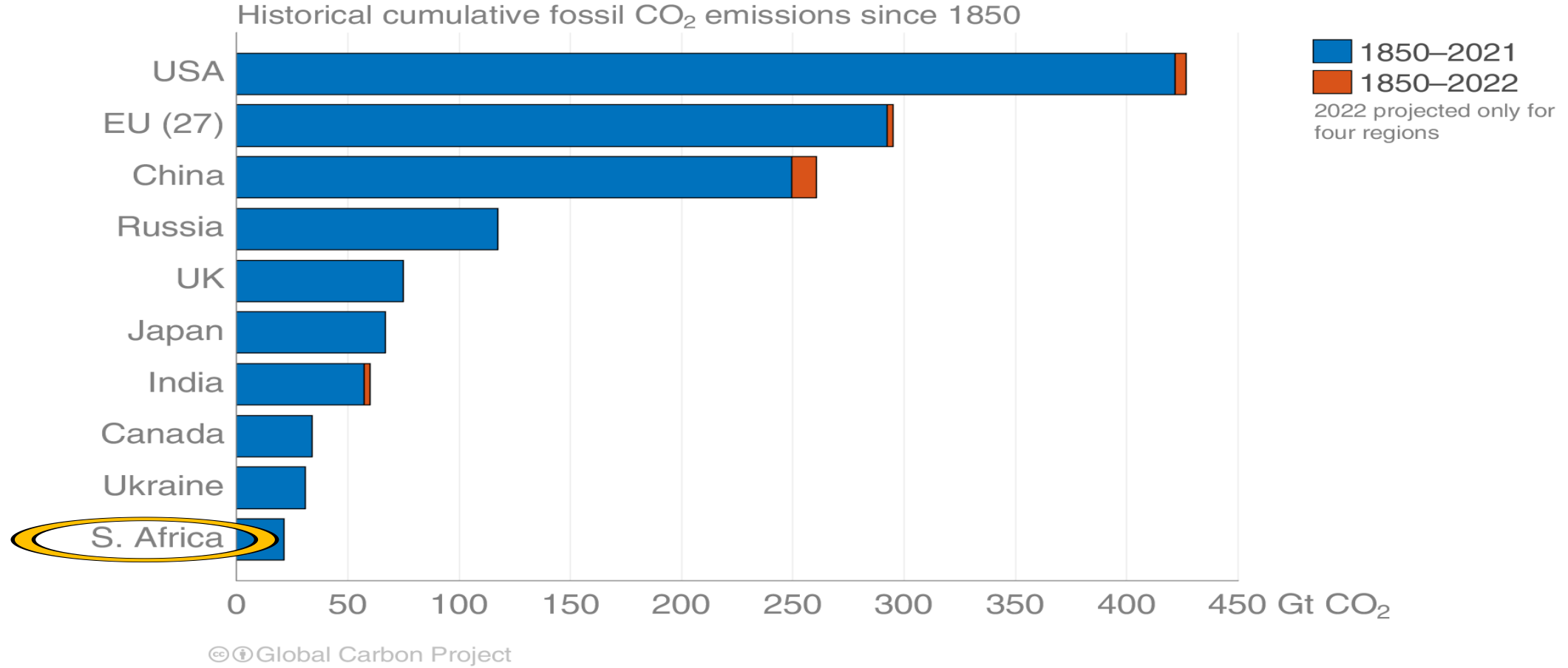
Chu, J. (2017, March 16)

# Cumulative carbon dioxide emissions, 1750-2020

Estimated shares of carbon dioxide emissions from energy and industry since 1750.



Credit: Chart: The Conversation/CC-BY-ND Source: Our World In Data, Global Carbon Project



Global Carbon Project. Retrieved from <https://robbieandrew.github.io/GCB2022/>



# FAMILY PLANNING



Mattapan CHC. (n.d.). *Family Planning*

# Education and Empowering Women and Girls

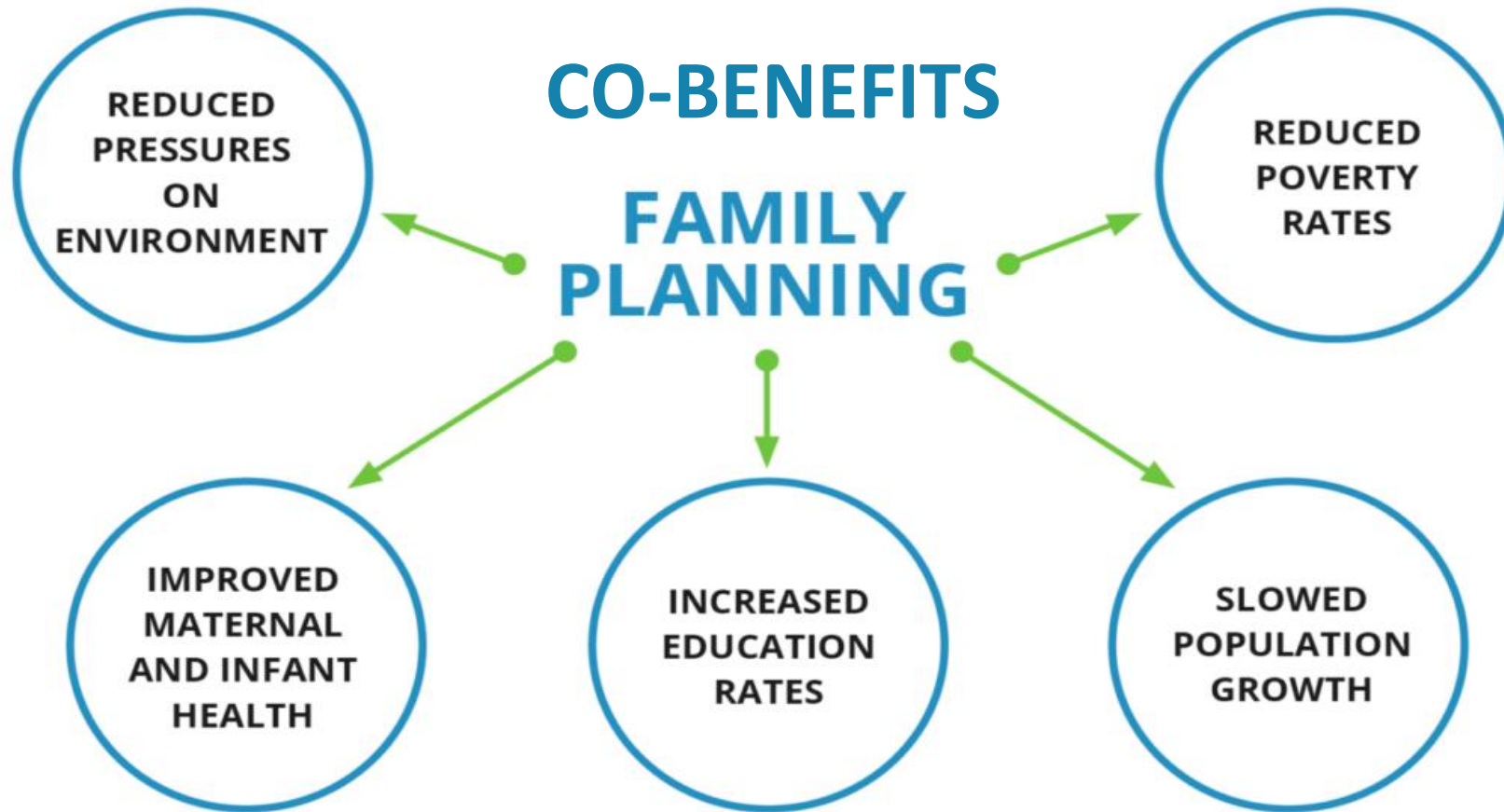
---



Wodon, Q., Montenegro, C., Nguyen, H., & Onagoruwa, A. (2018)

# Family Planning & Climate Change

---





# **GIRLS' EDUCATION AND FAMILY PLANNING: ESSENTIAL COMPONENTS OF CLIMATE ADAPTATION AND RESILIENCE**

Patterson, K. P., Jameel, Y., Mehra, M., & Patrone, C. (2021)

# Top 5 solutions to climate change

**78.33**  
Plant-rich diets



**57.15**  
Refrigerant management



**88.50**  
Reduced food waste



**68.90** ☆  
Lower population growth  
(family planning & education)



**54.45**  
Tropical forest restoration

☆ Gigatonnes CO<sub>2</sub> Equivalent  
Reduced/Sequestered  
(2020–2050), in line with 2°C  
temperature rise by 2100

Source: Project Drawdown, 2022

**POPULATION  
MATTERS**

TM



Limb, L. (2022, November 1)



Letzter, R., 2019; Jenny Evans/Stringer/Getty Images

# References

---

Atwoli, L., Erhabor, G. E., Gbakima, A. A., Haileamlak, A., Ntumba, J.-M. K., Kigera, J., Laybourn-Langton, L., Mash, B., Muhia, J., Mulaudzi, F. M., Ofori-Adjei, D., Okonofua, F., Rashidian, A., El-Adawy, M., Sidibé, S., Snouber, A., Tumwine, J., Yassien, M. S., Yonga, P., ... Zielinski, C. (2022). COP27 Climate Change Conference — Urgent Action Needed for Africa and the World. *The New England Journal of Medicine*. <https://doi.org/10.1056/NEJMP2213503>

Chu, J. (2017, March 16). *Climate change to worsen drought, diminish corn yields in Africa*. MIT News | Massachusetts Institute of Technology. <https://news.mit.edu/2017/climate-change-drought-corn-yields-africa-0316>

Commonwealth Club. (2021, May 21). *Empowering Women: The Climate Solution We Don't Talk About*. Commonwealth Club. <https://www.commonwealthclub.org/events/2020-05-21/empowering-women-climate-solution-we-dont-talk-about>

Conciatore, J. (2021, October 25). *Protecting Rwanda's mountain gorillas | African Wildlife Foundation*. African Wildlife Foundation. <https://www.awf.org/news/protecting-rwandas-mountain-gorillas>

Global Carbon Project. Retrieved from <https://robbieandrew.github.io/GCB2022/>

Gorilla Doctors Staff. (2017, September 4). *New Mountain Gorilla Babies Named in 13th Annual Kwita Izina Ceremony*. Gorilla Doctors. <https://www.gorilladoctors.org/new-mountain-gorilla-babies-named-13th-annual-kwita-izina-ceremony/>

Gorilla Doctors Staff. (2017, September 4). *New Mountain Gorilla Babies Named in 13th Annual Kwita Izina Ceremony*. Gorilla Doctors. <https://www.gorilladoctors.org/new-mountain-gorilla-babies-named-13th-annual-kwita-izina-ceremony/>

Kigali Genocide Memorial. (n.d.). *Kigali Genocide Memorial – A place for remembrance and learning*. Retrieved November 12, 2022, from <https://kgm.rw/>

Letzter, R. (2019, September 26). *Are We Really Running Out of Time to Stop Climate Change?* Livescience.Com. <https://www.livescience.com/12-years-to-stop-climate-change.html>

Limb, L. (2022, November 1). *Which European leaders are attending COP27? The influential politicians heading to Egypt*. Euronews. <https://www.euronews.com/green/2022/11/01/which-european-leaders-are-attending-cop27-the-influential-politicians-heading-to-egypt>



# References

---

Loria, K. (2017, June 1). *How Much Has the US Contributed to Climate Change?* Business Insider. <https://www.businessinsider.com/us-effect-on-climate-change-co2-emissions-warming-2017-6>

MacDermot, G. E. (2017, March 17). *I Want You to Know that Rwanda is the Most Remarkable Country in the World | by Galt Elijah MacDermot | Medium*. Medium. <https://medium.com/@gmacdermot/i-want-you-to-know-that-rwanda-is-the-most-remarkable-country-in-the-world-85a3bd18bcd6>

Mattapan CHC. (n.d.). *Family Planning - mattapanchc*. Retrieved November 12, 2022, from <https://www.mattapanchc.org/services/planning>

Nakisozi, C. (2019, September 6). *Kwita Izina, Rwandan ceremony*. Everbased Tours and Travel. <https://everbased.com/kwita-izina-2019/>

O'Neill, A. (2022, June 1). *Rwanda - Gross domestic product (GDP) 1987-2027 | Statista*. Statista. <https://www.statista.com/statistics/452123/gross-domestic-product-gdp-in-rwanda/>

Patterson, K. P., Jameel, Y., Mehra, M., & Patrone, C. (2021). *Girls' education and family planning: essential components of climate adaptation and resilience*. [www.drawdown.org](http://www.drawdown.org)

ProjectDrawdown. (2020, February 7). *Family Planning and Education: ProjectDrawdown ClimateSolutions*. Project Drawdown. <https://drawdown.org/solutions/family-planning-and-education>

The Conversation/CC-BY-ND Source: Our World In Data, Global Carbon Project

Timbuktu Travel. (n.d.). *Lake Kivu Serena Hotel, Rwanda | Timbuktu Travel*. Timbuktu Travel. Retrieved November 12, 2022, from <https://www.timbuktutravel.com/lodge/lake-kivu-serena-hotel>

Wharton School. (n.d.). *The Transformative Power of Women Leaders in Rwanda*. Wharton School of the University of Pennsylvania. Retrieved November 12, 2022, from <https://alumni.wharton.upenn.edu/all-stories/alumni/the-transformative-power-of-women-leaders-in-rwanda/>

Wodon, Q., Montenegro, C., Nguyen, H., & Onagoruwa, A. (2018). *Missed Opportunities: The High Cost of Not Educating Girls*. The World Bank.