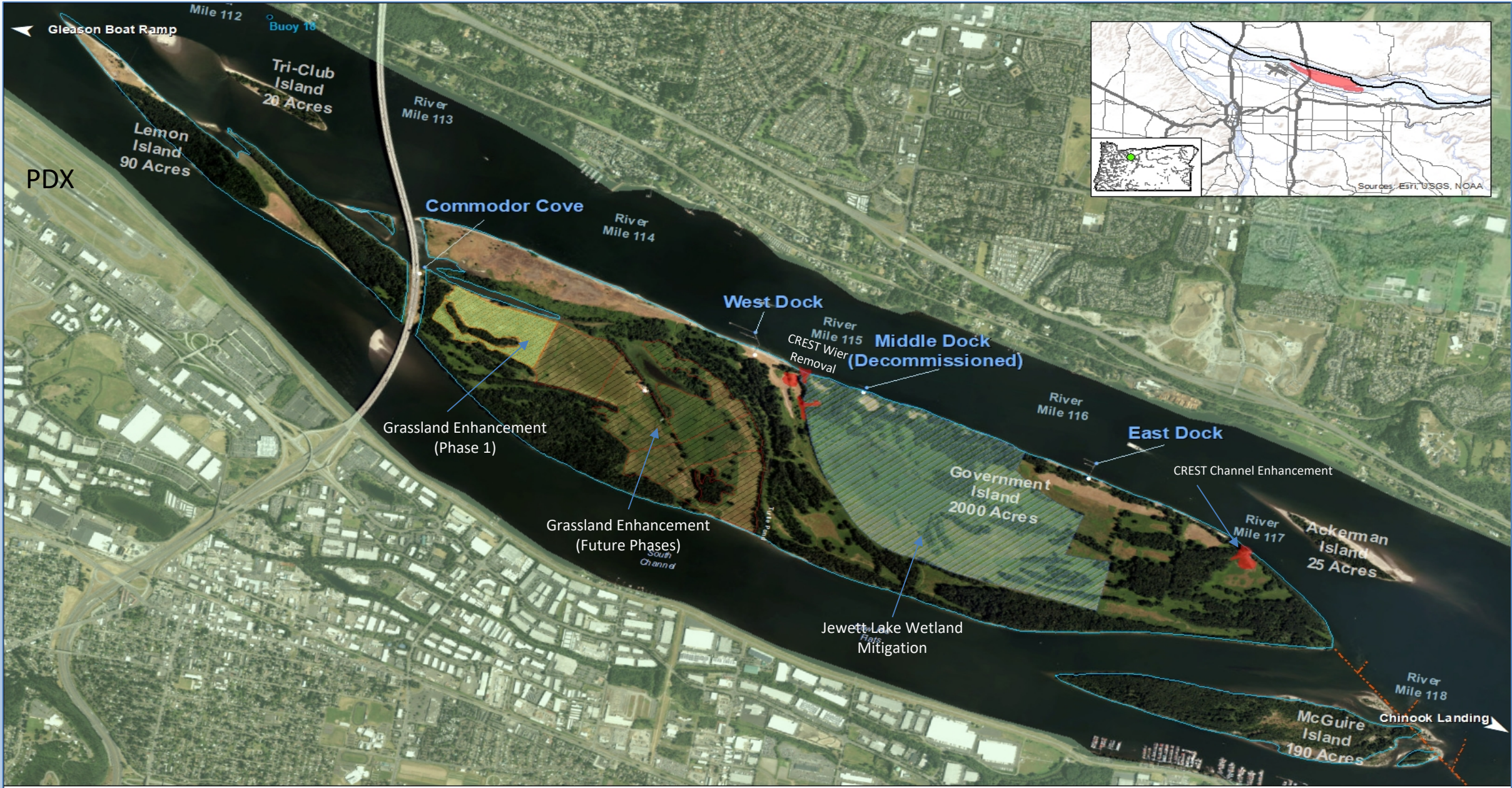


Port of Portland Government Island Grassland Enhancement



Matt Paroulek, Natural Resource Ecologist
Sarah Wilson, Conservation Ecologist



Government Island - Overview





Historic image showing barn, silo and outbuilding at Hood Ranch ca. 1940. From the collection of Muriel Cushman as provided in Ross, 2007.



Historic image showing Hood family herding cattle on the ranch 1939-40. Photo from the collection of Muriel Cushman as provided in Ross, 2007.



Grassland Mitigation Project Background

Airport Futures Natural
Resources IGA

Canopy, slough and
wetland enhancements

Phased grassland
mitigation on Government
Island

- 300 acres of mitigation
total

- Triggered by
development at 4 PDX
properties

- First 50 acres in advance
of impacts



Phase 1 Grassland Site Project Implementation

2012 - Mitigation Plan finalized

- Negotiation with the City of Portland
- Consultation with technical experts
- Project goals and targets

2012 – 2015

- Site Preparation
- Annual monitoring and reporting
- Seed sourcing
- Drill seeding

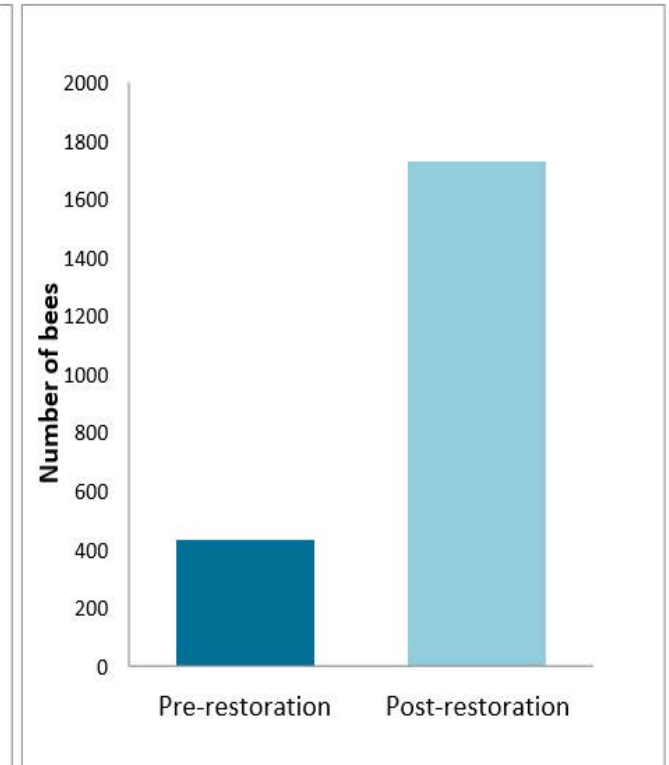
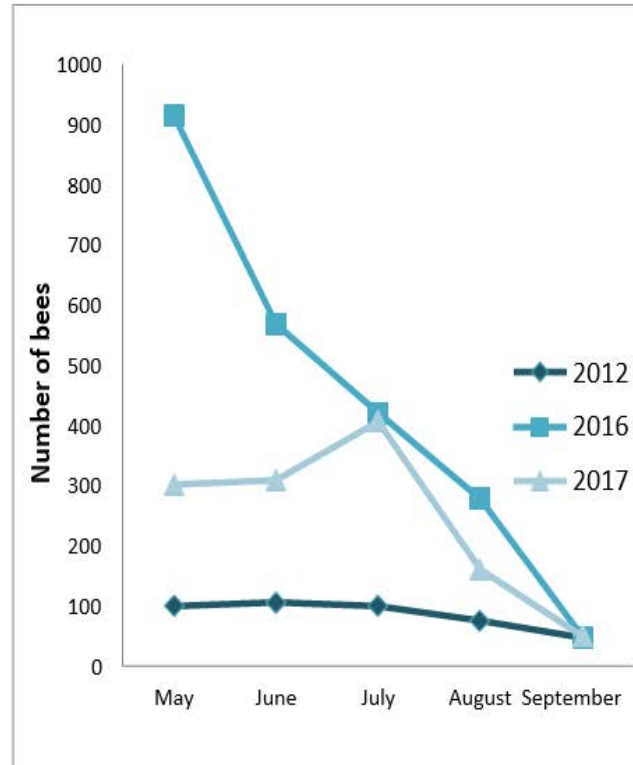
2016 – Present

- Monitoring, weed management, re-seeding/planting

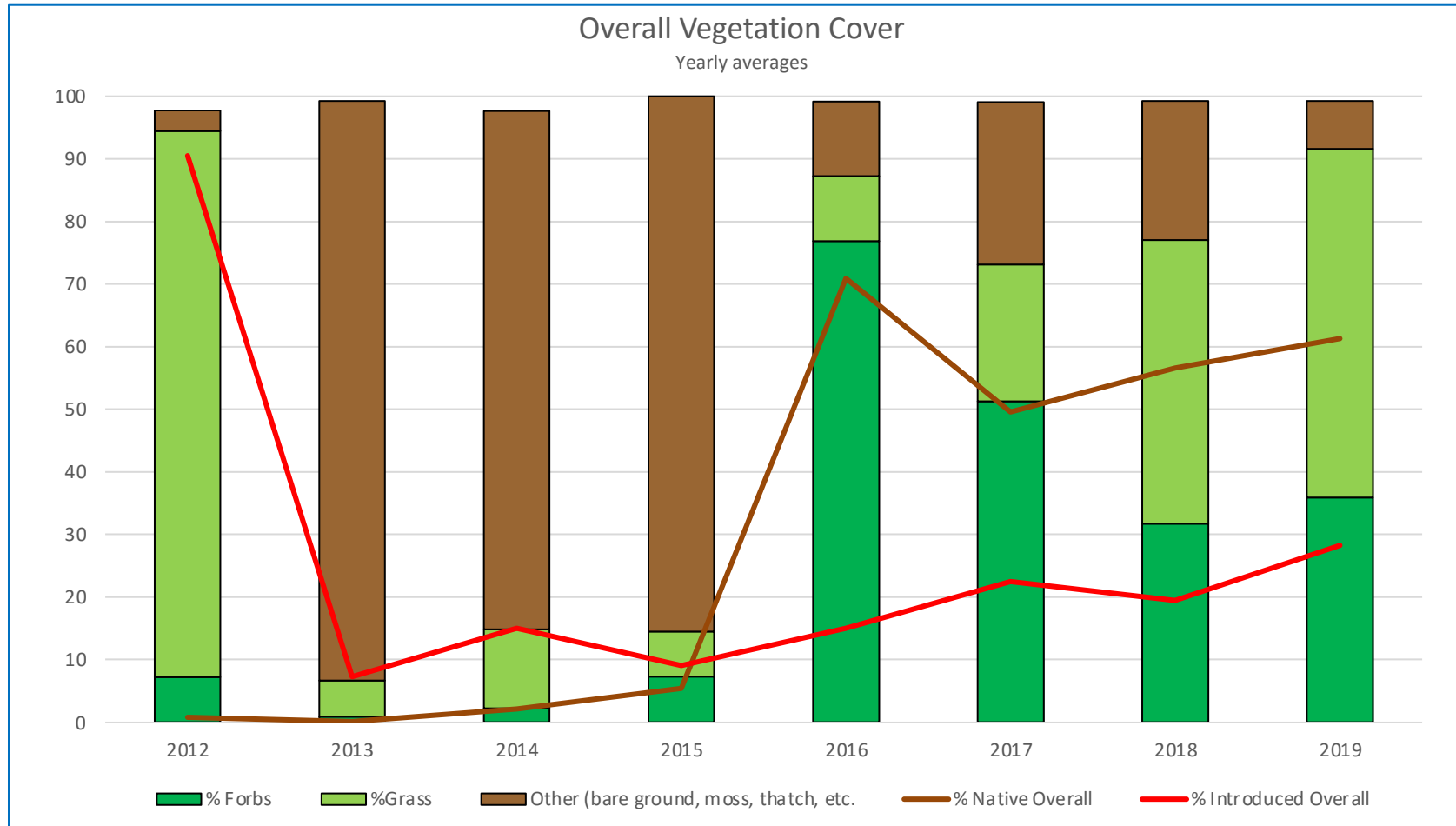


Pollinator Monitoring

- Bee and Butterfly surveys conducted monthly by the Xerces Society
 - May – September 2012, 2016 and 2017



Vegetation Monitoring



Vegetation Monitoring:

- Ten 200' transects, Point-Line intersect and 2 square-meter plots per transect
- Visual obstruction and vegetation height measurements along each transect

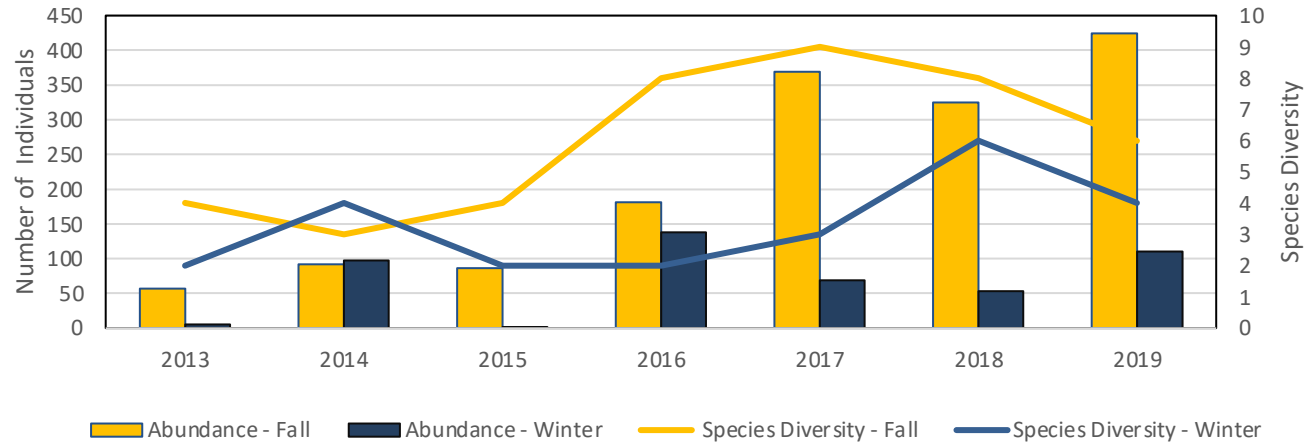
Bird Monitoring

- Six surveys per year
 - 2 in the fall to capture migratory bird use;
 - 2 in winter to determine wintering bird use;
 - 2 in spring to record breeding bird use.
- Area searches in fall and winter, point counts in spring

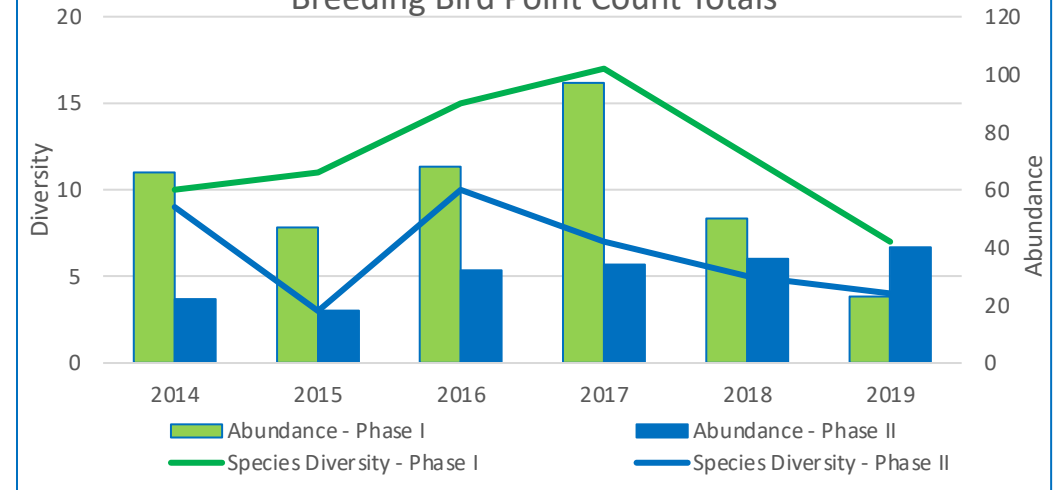


Bird Monitoring Results

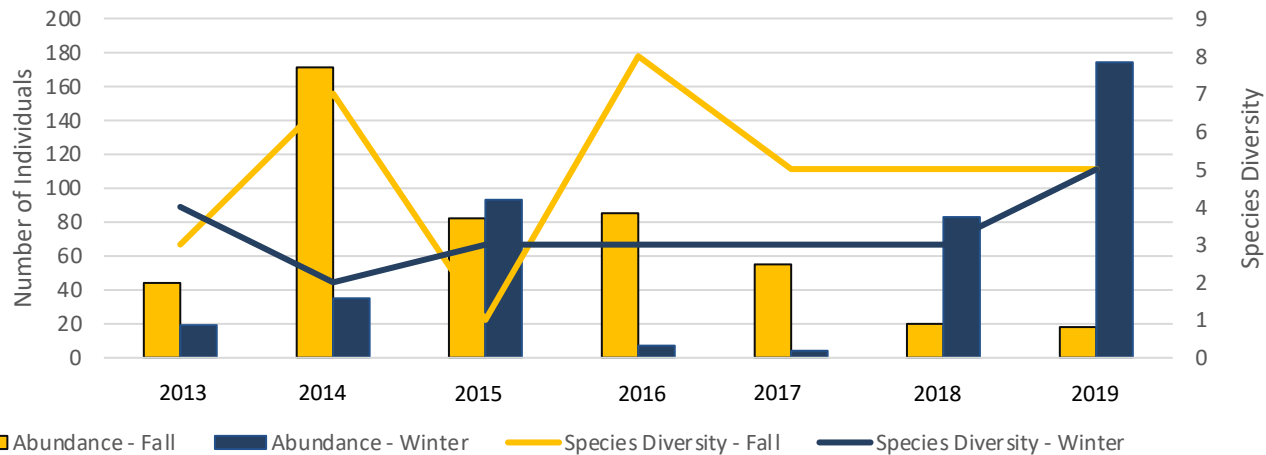
Fall and Winter Avian Species Abundance and Diversity - Phase I
Grassland Associated Species



Breeding Bird Point Count Totals



Fall and Winter Avian Species Abundance and Diversity - Phase II
Grassland Associated Species



Site Management

- Getting equipment to and from the site.
- Flooding
- Vandalism/trespass
- Weather
- Water access



2015



2016



2017



2018



2019



2020



Site Management

- Enhancement projects – “Tree Island” and Commodore Cove bank restoration (creating a more resilient site).
- NWYC

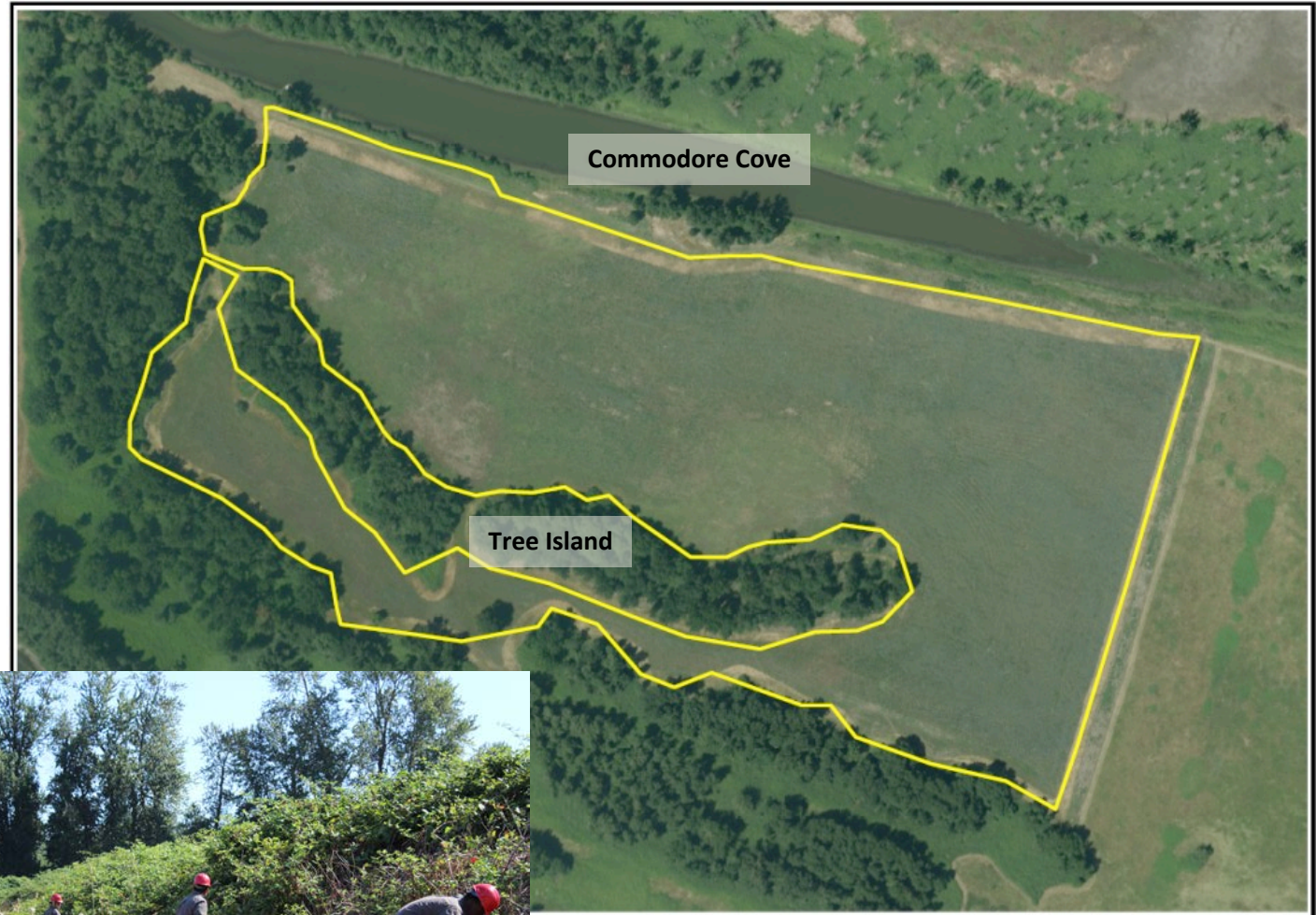


Photo from the NWYC



Questions?

Contact Info:

Sarah Wilson:
Sarah.Wilson@Portofportland.com

Matt Paroulek:
Matt.Paroulek@portofportland.com

