

Mar 30th, 2:15 PM - 3:00 PM

Leveling Up: Staying Current in an Evolving Learning Environment

Elena I. Maans

Bellevue Community College, e.maans@bellevuecollege.edu

Heath Hayden

Bellevue Community College, Heath.Hayden@bellevuecollege.edu

Let us know how access to this document benefits you.

Follow this and additional works at: <https://pdxscholar.library.pdx.edu/onlinenorthwest>

Maans, Elena I. and Hayden, Heath, "Leveling Up: Staying Current in an Evolving Learning Environment" (2018). *Online Northwest*. 18.

<https://pdxscholar.library.pdx.edu/onlinenorthwest/2018/presentations/18>

This Presentation is brought to you for free and open access. It has been accepted for inclusion in Online Northwest by an authorized administrator of PDXScholar. For more information, please contact pdxscholar@pdx.edu.

Leveling Up:

Staying Current in an Evolving Learning Environment

Online Northwest

Friday, March 30, 2018

Elena I. Maans & Heath Ray Hayden

Bellevue College

Who We Are

Elena I. Maans | Outreach Librarian



- Library and Information Science
- Sustainability in Higher Education
- LOVE being a conduit on campus!
- Focus: Online information literacy, programing, comics/graphic novels, maker space, and innovation through outreach!
- Garden Club Co-Advisor and mom to a future librarian (I hope).

Heath Ray Hayden | Collection Development Librarian



- Library/Information Science with Archives concentration
- Cultural Studies
- Lake Washington Institute of Technology
- Passion for eLearning, Open Access/OER, graphic novels/comics, Steven Universe, critical pedagogy/librarianship, zines
- Kettlebell enthusiast

Outcomes

- Design learning modules focused on student support services
- Recognize the component parts that make up a learning module
- Organize learning environment to optimize student engagement
- Foster new relationships with faculty through meeting their eLearning information literacy needs

About Bellevue College

Our Campus



- 12,405 FTE / 29,669 Headcount
- 12 Bachelor's degrees
- Predominantly Workforce Education and Transfer focused
- 1,037 Faculty (PT and FT) / 554 Staff (Bellevue College, 2017)
- 67-70% on-the-ground / 17-20% online / 12-13% hybrid

Our Instruction Model

- Brief history of our library instruction model
- 5 librarians, 5 adjunct librarians
- 5 liaison areas: Social Science, Arts & Humanities, Science, iBIT (Institute for Business and Information Technology), and Health Science, Education & Wellness Institute (HSEWI)
- Librarian workload
- Before change in instruction
 - Summer 2014-Spring 2015: 262 face-to-face instruction sessions
 - Summer 2015- Spring 2016: 253 face-to-face instruction sessions
- After change in instruction
 - Summer 2016 - Spring 2017: 121 face-to-face instruction sessions
 - Summer 2017 - Winter 2018: 94 face-to-face instruction sessions.

Two Embedded Instruction Models

Embedded instruction **without** librarian

- Modules live in Canvas Commons
- Uniform layout and approach
- Instructors can modify module as needed
- Built in assessment for the instructor

Embedded instruction **with** librarian

- Librarian is added to the Canvas course under the role 'Librarian'
- At point of need
- Librarians can access data for assessment

DIY

Instructional

Design

Librarians and Instructional Design

- 85% of faculty use an LMS (56% on a daily basis)
- 83% of students use an LMS (56% in all or most courses) (Brown, et al., 2015, p. 2)
- Demographic of students is changing (Eshleman, et al. 2016)
- Subject specialization → Function specialization (Eshleman, et al. 2016)
- Flexible and blended instruction: modules, Research Guides, video tutorials

Consistency and Identity



*Library
Module*

- Content organization
- Estimate of time to complete
- Accessibility
- Attributions & licenses
- References page
- Quizzes
- Activities
- BC Library logo
- Shorter content pages

Embedded Instruction

Without a Librarian

- Faculty download library instruction modules from Canvas Commons
 - Search Techniques
 - Scholarly v. Popular
 - Plagiarism and MLA7/8 or APA
 - Fake News in the Digital Age
 - Evaluating Internet Sources
- Modules are plug and play
- ENGL 201: Research Paper faculty
 - Annotated bibliography average: 17/20
 - In-module assessment: 100% [completion and score for 2 hybrid classes, fall 2017]
- ACRL Assessment in Action project on instruction models

EYE Module

Created for First Year Experience students

The screenshot displays a course interface with the following elements:

- Course Title:** FYE: How to use the Library Media Center (with a green checkmark and navigation icons)
- Module List:**
 - Introduction to LMC (with a green checkmark)
 - 1. LMC Hours and Location (with a green checkmark)
 - 2. What can you check out from the LMC (with a green checkmark)
 - 3. Services the LMC provides (with a green checkmark)
 - 4. What a librarian can help you with (with a green checkmark)
 - 5. How to find a book or DVD (with a green checkmark)
 - 6. Using a library database verses Google to find resources for your assignments (with a green checkmark)
 - 7. Where to get help for citations (with a green checkmark)
 - LMC Quiz (with a rocket icon, 10 pts, and a green checkmark)

Advantages

- Access library instruction modules in Canvas Commons
- Occasional combining of embedded and face-to-face instruction
- Quality of sources and citations is high
- Complete all items function

Disadvantages

- Instructors don't always grant librarians access to Canvas courses
- Cannot track use of modules
- Cannot access assessment data
- Quizzes are not always a great assessment metric
- Sustainability issues

With a Librarian

- Librarian is added as ‘Librarian’ role in the course. Was a special role in Canvas created by our eLearning department.
 - Can grade, view student work, be contacted via Canvas Inbox, ability to easily modify module.
- Can message reminders to students about using you as a resource.
- Create a more custom module(s) based on the assignment(s).
- Biology 212
 - Annotated Bibliography:
 - 24 out of 26 students submitted the assignment.
 - 18.98/25 with an average of 76%
 - Take away: those that consulted with the librarian and sought assistance did much better on the assignment.

Advantages

- Allows for more opportunity for collaboration between librarian and instructor
 - On the module and in some cases on an assignment
 - In many cases the collaboration continues quarter after quarter
- Easier to pull assessment data
- The more modules and pages you create sometimes the easier it is to create a module
- Students find it easier to contact a librarian, provides someone at point of need
- The research knowledge and resources are at point of need

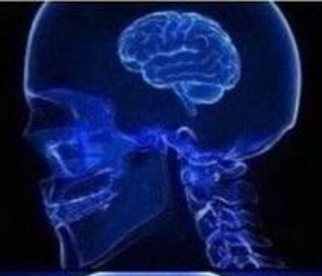
Disadvantages

- Some instructors want you present but do not promote you or keep in contact
- Mandatory trainings required by your institution
- Unless you have a good relationship with the instructor you might be missing some pieces
 - Issues students might be facing, more of the “inside scoop.”
- Course can be copied to an instructor who does not contact the librarian
 - Data and modifications lost

Librarian NOT SO HIDDEN! Agenda

Expand your awareness of ways
librarians can support you!

FACULTY INCLUDES
LINK TO LIBRARY
WEBSITE IN CANVAS
COURSE NAVIGATION



FACULTY DOWNLOADS
LIBRARY INSTRUCTION
MODULE (S)
INTO COURSE



FACULTY CONNECTS
WITH LIBRARIAN
TO DESIGN COURSE-SPECIFIC
MODULES



FACULTY BRINGS LIBRARIAN
INTO LMS TO COLLABORATE
ON ASSIGNMENTS
AND PROVIDE LIBRARIAN
SUPPORT AT POINT OF NEED



References

Bellevue College. (2017, January). Bellevue College at a Glance - 2016-17 Fact Sheet. Bellevue College. Retrieved from

<https://s.bellevuecollege.edu/wp/sites/114/2018/01/2016-17CollegeAtAGlancePublish.pdf>

Brown, M., Dehoney, J., & Millichap, N. (2015). The Next Generation Digital Learning Environment: A report on research.

EDUCAUSE Learning Initiative, 11.

Daniels, E., & Usina, P. (2016). Creating a Library Presence in Canvas. California Community Colleges. Retrieved from

<http://ccconlineed.org/wp-content/uploads/2017/02/Creating-a-Library-Presence-in-Canvas-CCL-10-28-16- A11Y.pdf>

Eshleman, J., Moniz, R., Mann, K., & Eshleman, K. (2016). *Librarians and Instructional Designers: Collaboration and innovation*.

Chicago: ALA Editions.

Washington State Board for Community and Technical Colleges. (2018). Academic Year Report | 2016-17. Retrieved March 12,

2018, from <https://www.sbctc.edu/colleges-staff/research/data-public/academic-year-report-dashboard.aspx>

Questions?

Thank you for attending Online
Northwest!

Elena I. Maans

e.maans@bellevuecollege.edu

Heath Ray Hayden

Heath.Hayden@bellevuecollege.edu