

Portland State University

**PDXScholar**

---

PSU Transportation Seminars

Transportation Research and Education Center  
(TREC)

---

3-5-2021

# Forging Equity in Cities: Using Equitable Transit-Oriented Development (eTOD) as a Blueprint for Policy and Practice

Roberto Requejo  
*Elevated Chicago*

Follow this and additional works at: [https://pdxscholar.library.pdx.edu/trec\\_seminar](https://pdxscholar.library.pdx.edu/trec_seminar)



Part of the [Transportation Commons](#), and the [Urban Studies and Planning Commons](#)

**Let us know how access to this document benefits you.**

---

## Recommended Citation

Requejo, Roberto, "Forging Equity in Cities: Using Equitable Transit-Oriented Development (eTOD) as a Blueprint for Policy and Practice" (2021). *PSU Transportation Seminars*. 203.  
[https://pdxscholar.library.pdx.edu/trec\\_seminar/203](https://pdxscholar.library.pdx.edu/trec_seminar/203)

This Book is brought to you for free and open access. It has been accepted for inclusion in PSU Transportation Seminars by an authorized administrator of PDXScholar. Please contact us if we can make this document more accessible: [pdxscholar@pdx.edu](mailto:pdxscholar@pdx.edu).



# Forging equity in cities: Using ETOD as a blueprint

**Roberto Requejo**  
**@elevated\_chi @Splanish**

March 5, 2021

# What is TOD?

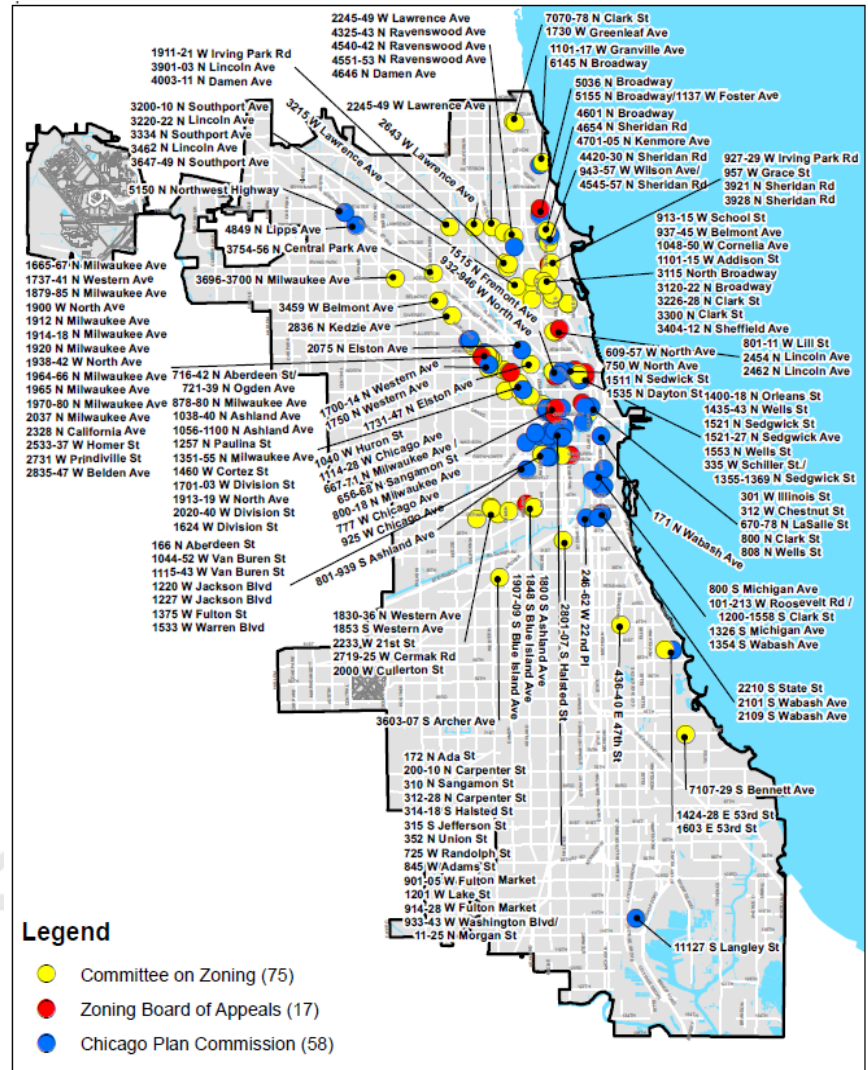


Source: [www.itdp.org](http://www.itdp.org)

# Where is TOD happening (and not)?



Source: Chicago Dept. of Planning and Development





# What is NOT ETOD?



Red Line - 95th/Dan Ryan

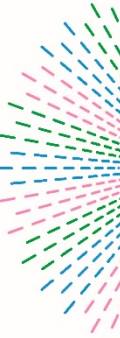
Red Line 95<sup>th</sup> St. Station, 2019. New station, but lacking amenities or equitable development within 1/2-mile radius of the CTA station.



Source: Metropolitan Planning Council

Milwaukee & California near the California Blue Line, 1993 (top) and 2020 (bottom); rapid TOD that led to mass displacement of Black and Brown residents due to gentrification. Equity and community weren't centered.

# The two sides of displacement



Between 2000 and 2018, Logan Square saw a 23,482 people decrease (-43.6%) in its Latinx population



Between 2000 and 2018, the City of Chicago lost 264,958 Black residents (-25.3%)



# How is ETOD different?



WE BELIEVE IN

**ETOD**

We believe in  
growing together,  
pushing no one out  
while welcoming others in.

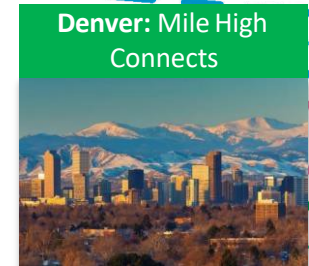
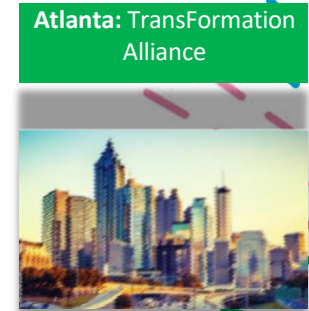


Illustration by JNJCreative

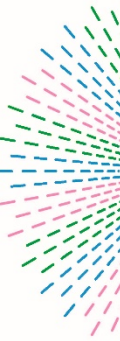
# Elevated Chicago Origins

Elevated Chicago was made possible through the Strong, Prosperous and Resilient Communities Challenge (SPARCC).

SPARCC is a national initiative calling for cities and regions to find creative solutions in the built environment that produce positive outcomes for racial equity, human health and climate resilience.



# Our Steering Committee



Emerald South Economic Development Collaborative

GARFIELD PARK  
COMMUNITY COUNCIL



Logan Square  
NEIGHBORHOOD ASSOCIATION





# Our Steering Committee



# A solid foundation

## Adaptability

We work on complex issues in a changing environment that requires us to exercise agility and constant adjustment

---

## Impact

Our approach is data-driven, results-oriented and asset-based in order to make visible and meaningful change on the ground

---

## Inclusion

Our collaborative approach acknowledges, embraces and leverages the diversity of our communities in order to achieve better, more efficient and equitable results

---

## Innovation

We nurture creative experimentation, take risks, and see failures as opportunities to learn, building on community traditions and established best practices

---

## Transparency

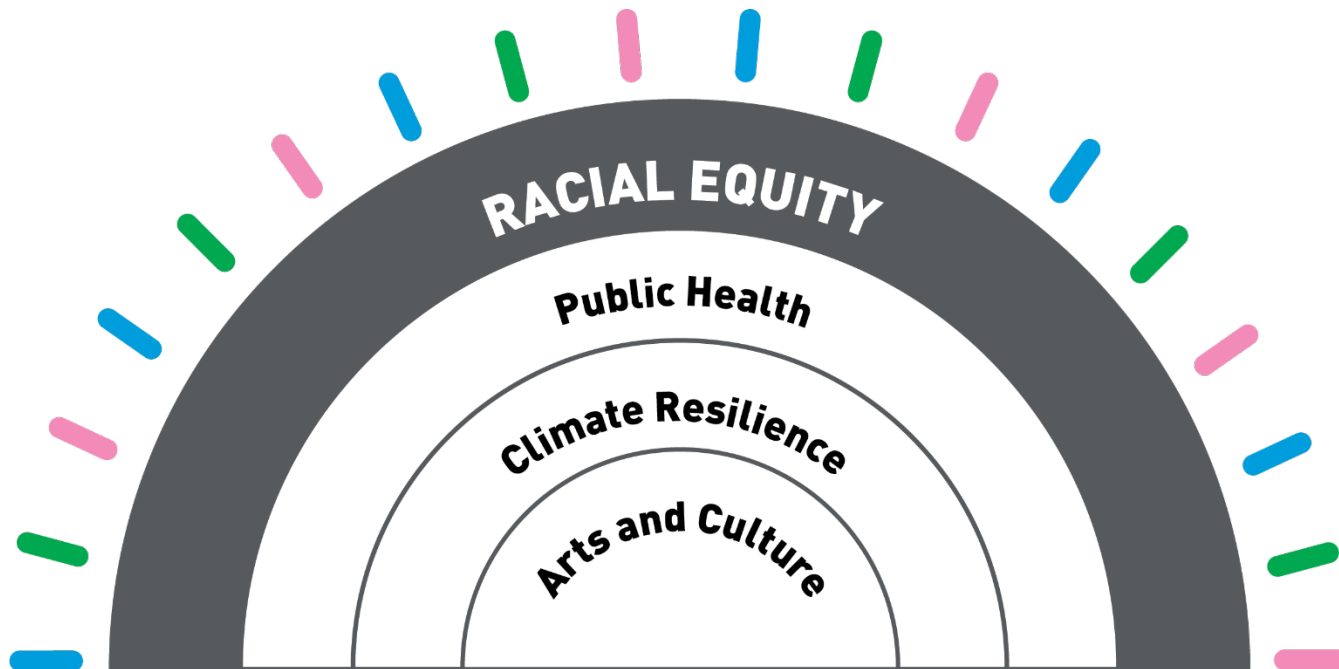
We make our decisions openly and responsibly, communicate clearly, and keep each other mutually accountable

---

# Our vision and lenses



Elevated Chicago envisions *vibrant* neighborhoods, where the built environment and infrastructure drive **racially equitable** outcomes for:

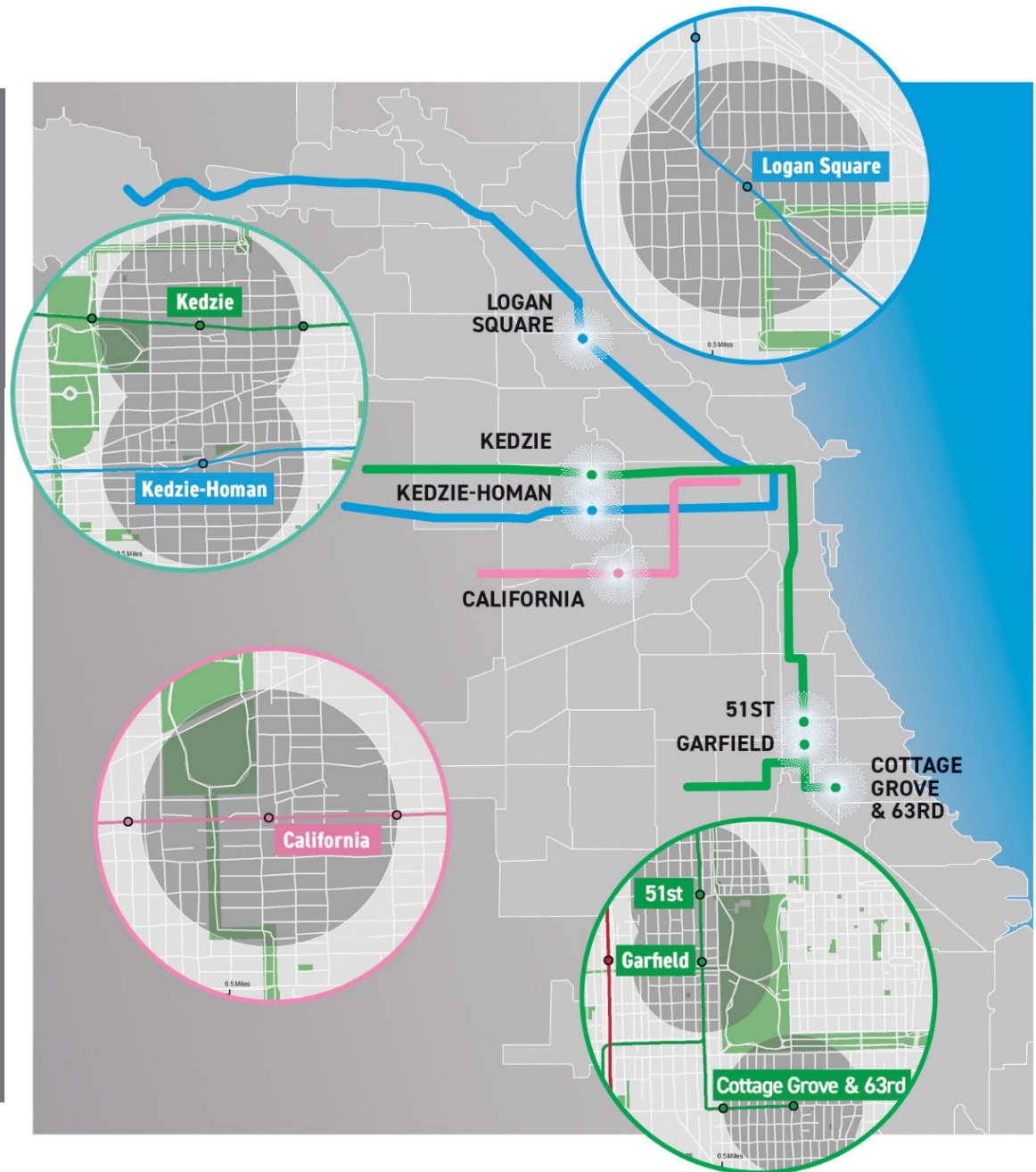


# Elevated Chicago eHubs

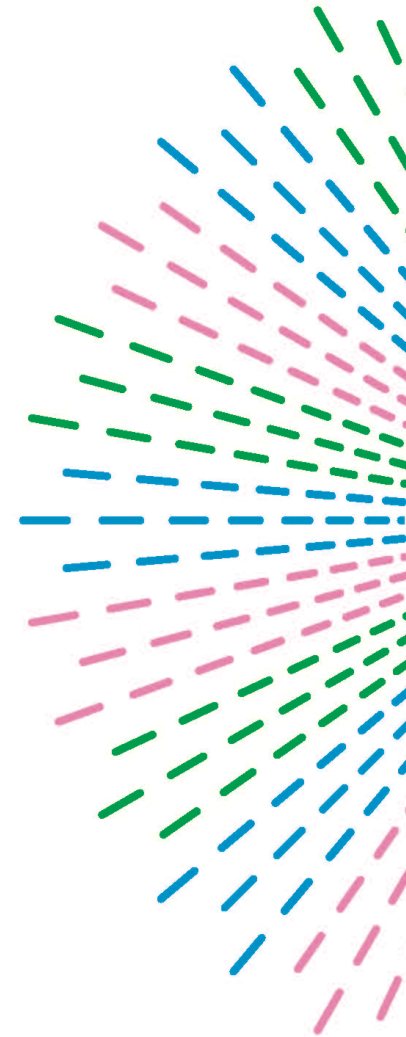
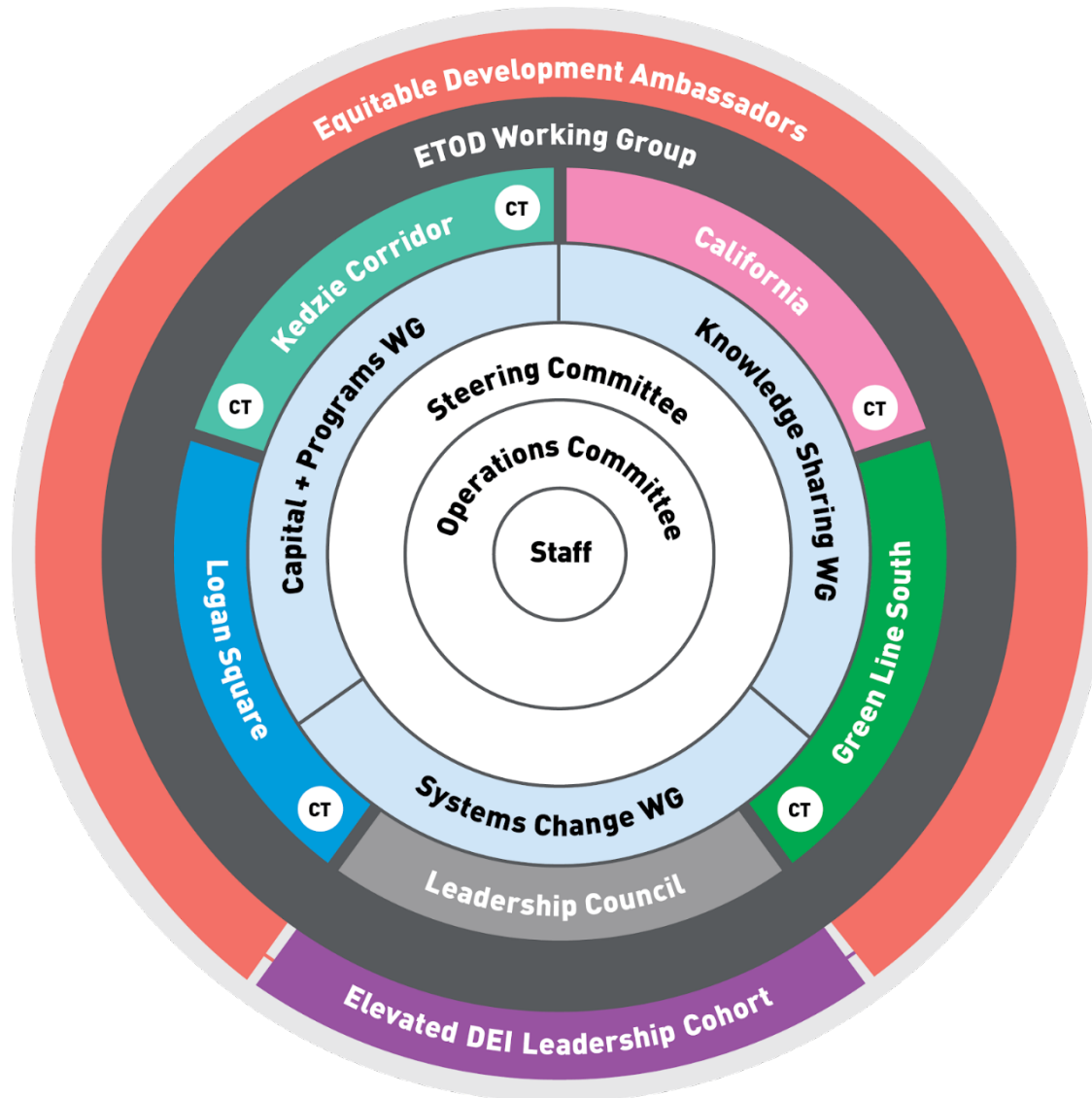
7 CTA Train Stations

6 Community areas

- Logan Square
  - Blue Line | Logan Square
- East Garfield Park & North Lawndale
  - Green line | Kedzie-Lake
  - Blue line | Kedzie-Homan
- Marshall Square
  - Pink line | California
- Washington Park & Woodlawn
  - Green line | 51<sup>st</sup>
  - Green line | Garfield
  - Green line | Cottage Grove/63<sup>rd</sup> St.

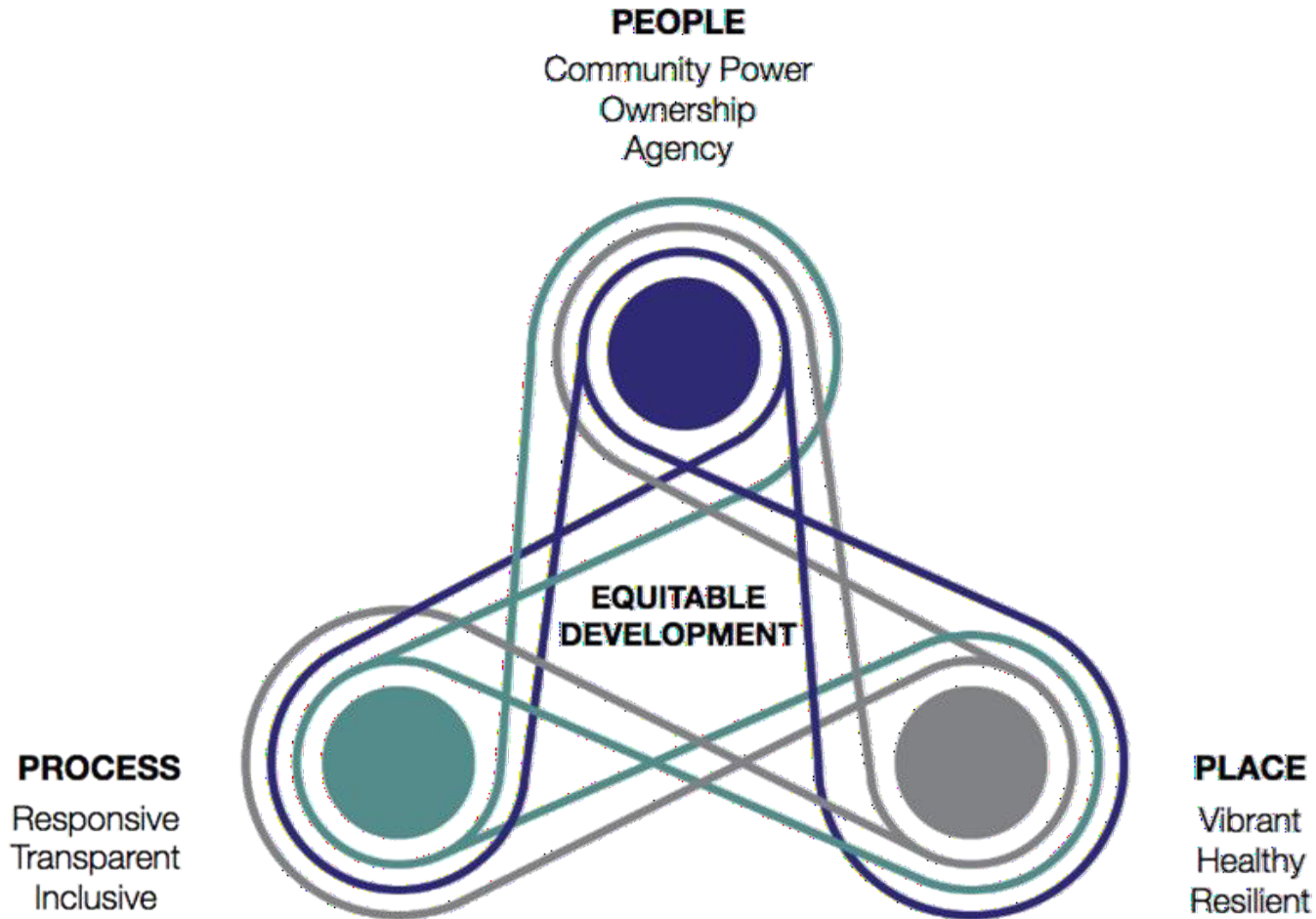


# Our Structure





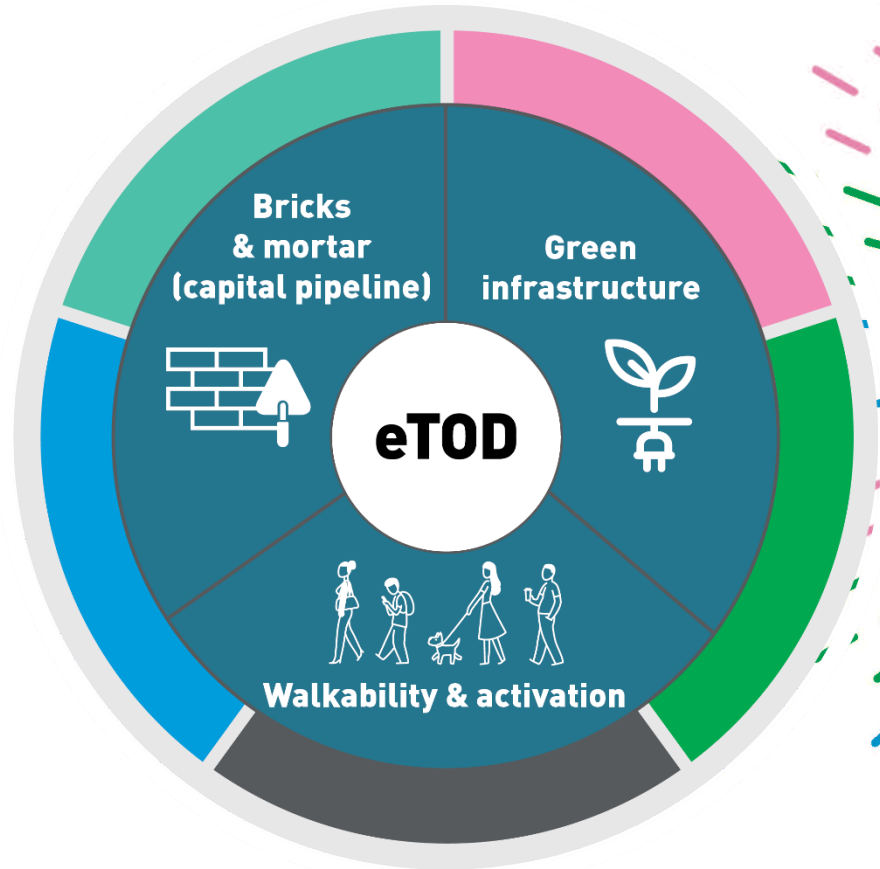
# Our Workplan Themes



# Our place-based work

*Three types of interventions:*

- Bricks & mortar (capital pipeline)
- Green infrastructure
- Walkability & activation



# Capital Projects Pipeline

## (Bricks & mortar)

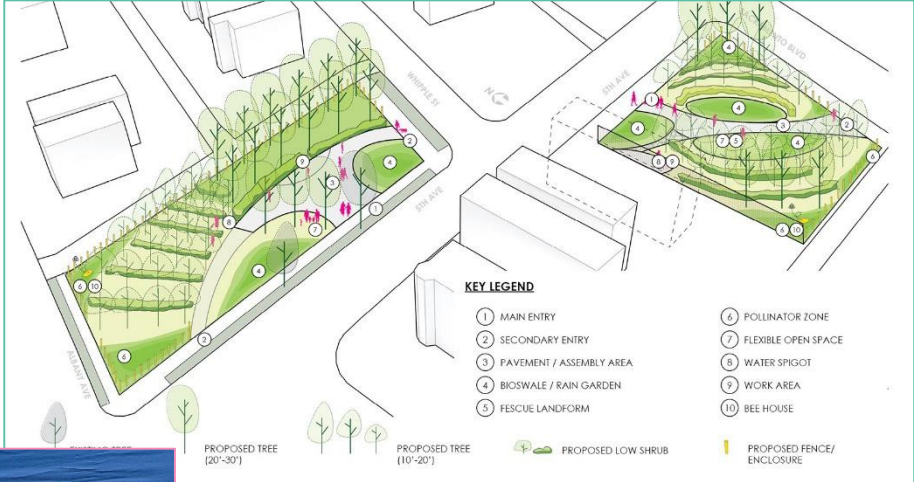
- Investments to date: \$1,040,000
- Affordable housing
- Community centers
- Business incubators





# Green infrastructure

- Investments to date: \$500,000
- CCR (Climate & Cultural Resilience)
- Eco-Districts
- Community solar



**Eco-Orchard (Kedzie Corridor eHub)**



**Oaks of North Lawndale (Kedzie Corridor eHub)**



**CCR Fest (California Pink Line eHub)**



**Overton Day (Green Line South eHub)**

# Walkability & activation

- Investments to date: \$290,000
- Station areas activation grants in all eHubs
- Resident-led videos
- CDPH walkability grants (to/from stations)



Walkability study (four sites)



51st St. Mural (Green Line South eHub)



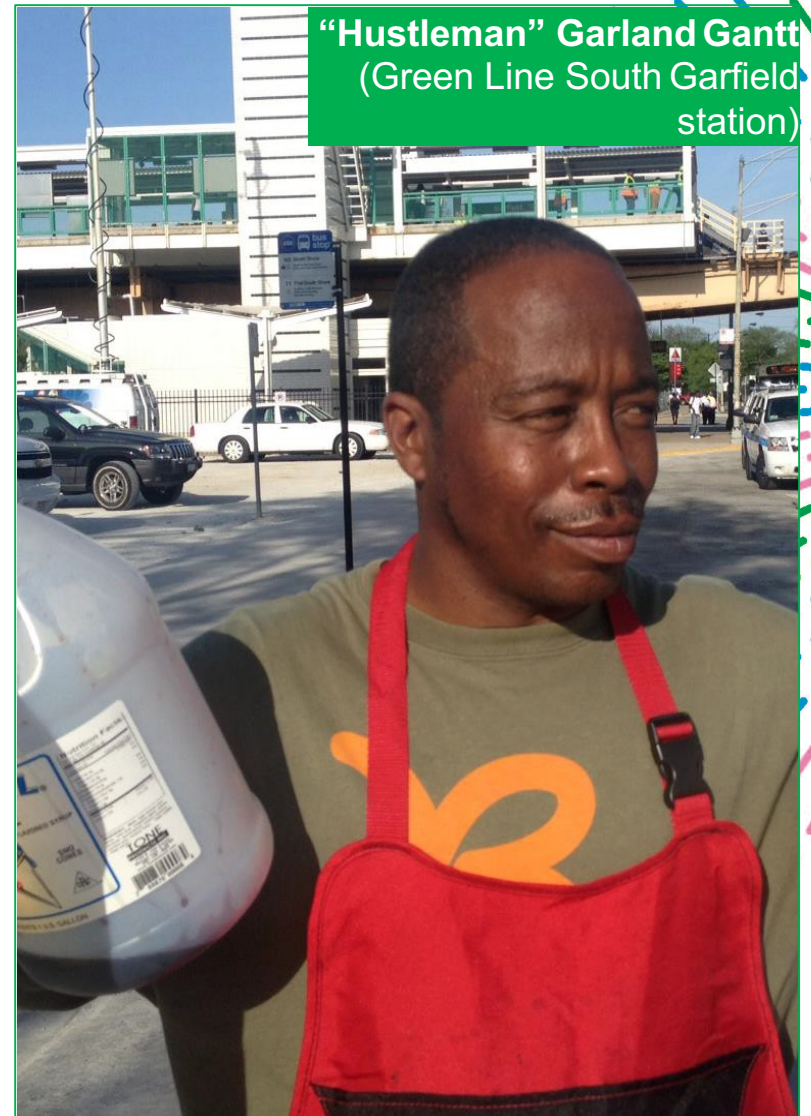
Spaulding Mural (Logan Square Blue Line eHub)



# Our people-based work



- Investments to date: \$700K+
- Community Table collaboration
- Resident-driven research and story-telling
- Equitable Development Ambassadors
- Community ownership & CBAs

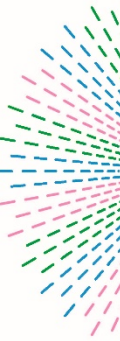


# Our process-based work

- Investments to date: \$500K+
- Justice, Equity, Diversity & Inclusion (JEDI) cohort
- Chicago ETOD policy implementation plan (36 priorities)
- *Community Engagement Principles & Recommendations*
- Federal ETOD policy
- Funding sources for capital pipeline



# Chicago's 1<sup>st</sup> ETOD Policy plan: the journey



**January 2019:** New TOD ordinance passed with advocacy by Elevated Chicago

**May 2019:** Mayoral transition. ETOD Policy is included in transition report

- Working group expanded from 10 people from the City & Elevated Chicago, to 80 + stakeholders from neighborhood, local & regional organizations
- The Group worked for 18 months on the Policy Plan

**Spring 2020:** Two virtual workshops



**September 2020:** Policy Plan is public; features 36 recommendations

**2021:** Some demonstration ETOD projects will be implemented with funding from The Chicago Community Trust & Partners 4 Places

**April 2019:** Lori M. Lightfoot is elected Mayor, City of Chicago



**Q4 2020:** Commitment from the City to start implementing short-term priorities in this time



# ETOD Policy plan priorities



RECOMMENDATIONS ARE ORGANIZED INTO THREE STRATEGIC PRIORITIES:



**Build the City's  
Capacity to  
support eTOD**

- Dedicated staff
- Formalize Working Group
- Annual eTOD performance report
- Community engagement standards



**Making eTOD  
required, easier,  
and more equitable**

- Overlay zoning district
- Extra points for eTOD in funding programs
- Pedestrian infrastructure
- More affordability and accessibility



**Embedding eTOD principles  
into Chicago's citywide  
planning process**

- Racial & health assessment of land use
- Framework for neighborhood land use
- Prioritize transportation



CONNECTING PEOPLE,  
BUILDING EQUITY

@elevated\_chi  
@Splanish  
[www.elevatedchicago.org](http://www.elevatedchicago.org)