

Portland State University

PDXScholar

Online Northwest

Online Northwest 2021

Mar 26th, 1:00 PM - 1:45 PM

Aspirational Equity: An Approach to Online Workshops by the University of Washington Libraries

Elliott Stevens

University of Washington - Seattle Campus, res22@uw.edu

Perry Yee

University of Washington - Seattle Campus, perryyee@uw.edu

Joanne Chern

University of Washington - Seattle Campus, jchern@uw.edu

Melissa Henry

University of Washington - Seattle Campus, melhenry@uw.edu

Charlotte McGrew

University of Washington - Seattle Campus, libidga2@uw.edu

Follow this and additional works at: <https://pdxscholar.library.pdx.edu/onlinenorthwest>

Let us know how access to this document benefits you.

Stevens, Elliott; Yee, Perry; Chern, Joanne; Henry, Melissa; and McGrew, Charlotte, "Aspirational Equity: An Approach to Online Workshops by the University of Washington Libraries" (2021). *Online Northwest*. 7. <https://pdxscholar.library.pdx.edu/onlinenorthwest/2021/schedule/7>

This Presentation is brought to you for free and open access. It has been accepted for inclusion in Online Northwest by an authorized administrator of PDXScholar. Please contact us if we can make this document more accessible: pdxscholar@pdx.edu.

Aspirational Equity

An Approach to Online Workshops by the
University of Washington Libraries



UNIVERSITY LIBRARIES

UNIVERSITY *of* WASHINGTON



Hello!

WE ARE UW LIBRARIES STAFF



Joanne Chern

Melissa Henry

Charlotte McGrew

Elliott Stevens

Perry Yee

AN AGENDA

STAGE SETTING

The first part of this presentation will provide context to online teaching and learning at the UW Libraries and describe our lived experience before and during the pandemic.

ACTIVE SHARING

The second part of this presentation will be active in chat. We will do a collaborative thinking exercise as we envision what the future holds in a post -pandemic world.

A CLARIFICATION

In an effort of full transparency, this session is **NOT**...

- A how-to guide to build an online workshop.

It **IS**, however...

- An honest and open discussion about our experience.
- Our story and perspective.



ONLINE FIRST, EQUITY FIRST

an idea, a philosophy, a practice



a cohesive vision of online and hybrid learning which adopts a transformative mindset regarding remote support, equity, and sustainability.

A values - driven framework



EQUITY

Highlights the disproportionate impacts of the shift to online on user communities. Prioritizes issues of accessibility, inclusion, and openness.



CONSISTENCY

Ensures that users have high - quality, coherent, and reliable online experiences through all Libraries interactions and communications.



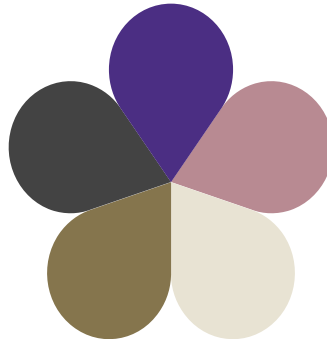
SUSTAINABILITY

Strengthens collaboration, scalability, and streamlined workflows. Mitigates increased workloads, silos, and opaque processes.



OPPORTUNITY

Encourages and rewards experimentation with ways of supporting research and learning, communicating impact, and forging partnerships.



COMMUNITY

Using a core lens of user experience. Recognizes the importance of online community, engagement, and connection to student success and retention.

A LIST OF PROGRAMS FOR TODAY

- Storytelling Fellows
- Graduate Student Research Institute
- Digital Scholarship Summer Immersion
- Scholars' Studio
- Participatory Design

We will discuss how each of these programs operated before the pandemic and how it transitioned in pandemical times.

STORYTELLING FELLOWS

Background

This is an innovative, hands-on program designed to highlight the interests and accomplishments of UW graduate students, using digital -storytelling skills and technologies.



STORYTELLING FELLOWS

PRE-PANDEMIC

- Online workshops with synchronous and asynchronous components
- Designed for graduate students
- Incorporated ideas of accessibility into curriculum

DURING PANDEMIC

- Online first, equity first was already the foundation so needed few updates
- Attempted to incorporate greater focus on anti-racism

GRADUATE STUDENT RESEARCH INSTITUTE

BACKGROUND

An online, summer workshop that ran for its 4th year in 2020. The goal of the workshop was defined as increasing research confidence and creating collaboration between grad students and subject liaisons.



graduate student research institute

SUMMER 2020

RESEARCH SMARTER, NOT HARDER

PRE-PANDEMIC

- Content delivery and discussion occurred via Canvas
- Two synchronous week - long sessions with flexible due dates

DURING PANDEMIC

- Experimented with communication, introducing Slack instead of Canvas discussion boards as a tool
- Included optional synchronous session
- Nearly doubled in size

DIGITAL SCHOLARSHIP SUMMER IMMERSION

BACKGROUND

A summertime, multi-track digital-scholarship program for faculty, staff, and students where participants start podcasts, digital books, and digital exhibits



DIGITAL SCHOLARSHIP SUMMER IMMERSION

PRE-PANDEMIC

- In person in UW Libraries spaces
- For faculty, staff, and mostly grad students
- Two tracks (podcasting, digital publishing)
- Big presentations and coffee chats
- \$10

DURING PANDEMIC

- Online with combinations of Zoom, Slack, Google Drive
- For faculty, staff, grad students, and some undergrads
- Three tracks (podcasting, digital publishing, digital exhibits)
- Big presentations
- Free

SCHOLARS' STUDIO

BACKGROUND

Scholars' Studio is a fun, informal event that features 10 rapid-fire ignite-style presentations (5 minutes each) given by graduate students and postdocs doing research on topics related to an interdisciplinary theme.



WINTER 2021

Virtual Scholars' Studio
OPEN CALL
FOR PROPOSALS

Are you a graduate student who wants to communicate your capstone, research or pedagogy to a wider audience? Would you like to get feedback about your virtual presentation style from a group of supportive and interdisciplinary people?

Then the Graduate School's Core Programs and the UW Libraries Research Commons invite you to apply for Scholars' Studio – a fun, low stakes way to give a 5-minute lightning talk!

2.1.21
PROPOSALS DUE

VIRTUAL EVENT >
THURSDAY
FEB. 25, 2021
4 - 5:30 P.M.

Scholars' Studio

UNIVERSITY of WASHINGTON
CORE PROGRAMS
The Graduate School

UNIVERSITY LIBRARIES
UNIVERSITY of WASHINGTON
Research Commons

APPLY HERE BY FEB. 1 > www.lib.washington.edu/commons/events/scholarsstudio

The poster features a central illustration of a laptop with a play button on the screen, surrounded by icons for a lightbulb, a clock, a speech bubble, a book, and a stack of books. The background is decorated with snowflakes and a circular arrangement of icons representing various academic and research activities.

SCHOLARS' STUDIO

PRE-PANDEMIC

- Ostensibly tri-campus, but mostly Seattle campus
- Held physically in the UW Libraries Research Commons
- No hybrid model; streaming had been requested in the past but no urgency

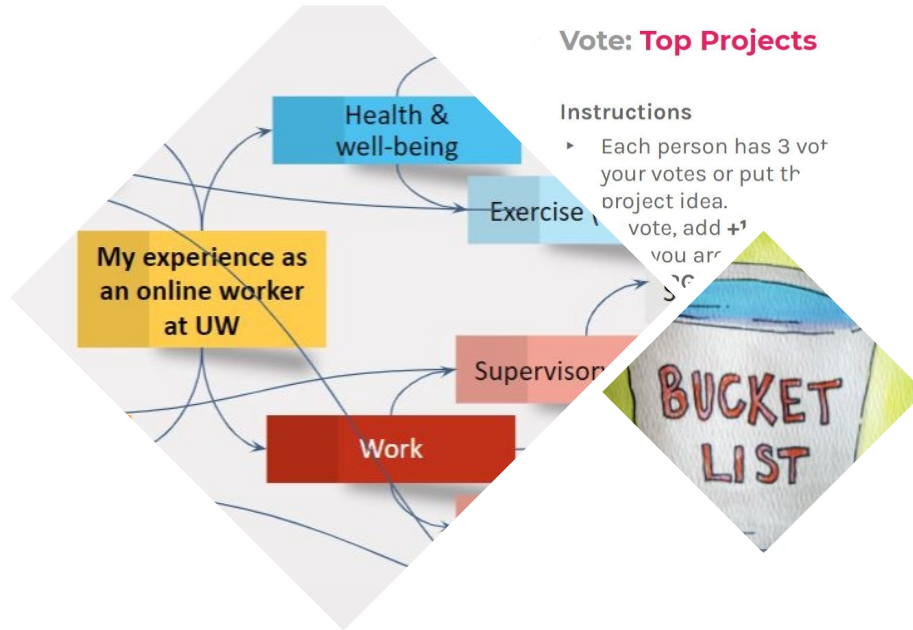
DURING PANDEMIC

- Open to tri-campus
- Held completely online with recording options
- More resources available (e.g., asynchronous viewing of recordings, live captions)
- Potentially more sustainable for future Scholars' Studios
- Consider: digital divide

PARTICIPATORY DESIGN

BACKGROUND

Surfacing needs of online students from the Libraries. Online students as co-designers. Online - only from its inception (the second of a two -part Participatory Design series-- the first was in person.)



PARTICIPATORY DESIGN

PRE-PANDEMIC

- Zoom and Google Docs - chosen for their familiarity and simplicity
- 10 online synchronous sessions
- design activities, discussions, and share outs
- preemptively targeted to online-only students
- already recruited these students at the time of the pandemic start

DURING PANDEMIC

- Set to begin at the start of April
- Tools, technologies, and methods didn't change much - worked well.
- What did change? Additional considerations for capacity, well-being, and burnout, given the circumstances surrounding COVID-19

a
post
pandemic
world



COLLABORATIVE FUTURE PLANNING

an open chat conversation and thought exercise



**What ways are we not
meeting the needs of
students?**



2

**What inequities surfaced
that weren't apparent pre -
pandemic?**



3

**Did the pandemic create
those inequities?**



4

**Did the pandemic exacerbate
those inequities?**



Thanks for
pondering
the future
with us.

ANY QUESTIONS?



Joanne Chern, @jchern92

Melissa Henry, melhenry@uw.edu

Charlotte McGrew, @library_char

Elliott Stevens, @StevensElliott

Perry Yee, perryyee@uw.edu

RESOURCES

- Check out our workshops!
 - Storytelling Fellows Podcasting: <https://libstory.github.io/>
 - Podcasting for UW Libraries: <https://sites.uw.edu/libstory/>
 - Digital Video Storytelling:
<https://canvas.uw.edu/courses/1271259>
 - GSRI 2020:<https://canvas.uw.edu/courses/1418583>
 - DSSI 2020:<http://training.ds.lib.uw.edu/dssi20/>

CREDITS

Special thanks to all the people who made and released these awesome resources for free:

- Presentation template by [SlidesCarnival](#)
- Photographs by [Unsplash](#)