

Portland State University

PDXScholar

Faculty Senate Monthly Packets

University Archives: Faculty Senate

11-3-2014

Faculty Senate Monthly Packet November 2014

Portland State University Faculty Senate

Follow this and additional works at: <https://pdxscholar.library.pdx.edu/senateminutes>

Let us know how access to this document benefits you.

Recommended Citation

Portland State University Faculty Senate, "Faculty Senate Monthly Packet November 2014" (2014). *Faculty Senate Monthly Packets*. 306.

<https://pdxscholar.library.pdx.edu/senateminutes/306>

This Minutes is brought to you for free and open access. It has been accepted for inclusion in Faculty Senate Monthly Packets by an authorized administrator of PDXScholar. Please contact us if we can make this document more accessible: pdxscholar@pdx.edu.

Faculty Senate, November 2014



In accordance with the Constitution of the PSU Faculty, **Senate Agendas** are calendared for delivery ten working days before Senate meetings, so that all faculty will have public notice of curricular proposals, and adequate time to review and research all action items. In the case of lengthy documents, only a summary will be included with the published agenda. Full curricular proposals are available at the PSU Curricular Tracking System: <http://psucurriculumtracker.pbworks.com>. If there are questions or concerns about Agenda items, please consult the appropriate parties and make every attempt to resolve them before the meeting, so as not to delay the business of the PSU Faculty Senate. Items may be pulled from the Curricular Consent Agenda for discussion in Senate up through the end of roll call.

*Senators are reminded that the Constitution specifies that the Secretary be provided with **the name of his/her Senate Alternate for the academic year by the beginning of fall term.** An Alternate is another faculty member from the same Senate division as the faculty senator. A faculty member may serve as Alternate for more than one senator, but an alternate may represent only one Senator at any given meeting. A senator who misses more than 3 meetings consecutively, will be dropped from the Senate roll.

www.pdx.edu/faculty-senate

PORTLAND STATE
UNIVERSITY
FACULTY SENATE



TO: Senators and Ex-officio Members to the Senate
FR: Martha W. Hickey, Secretary to the Faculty

The Faculty Senate will hold its regular meeting on **November 3, 2014**, at 3:00 p.m. in room **53 CH**.

AGENDA

- A. Roll
- B. *Approval of the Minutes of the October 6, 2014 Meeting
- C. Announcements and Communications from the Floor
 - *1. OAA Response to October 2014 Senate Actions
 - Set up & Senate districts
 - Campus Smoke and Tobacco Free Policy – Julie Weissbuch Allina
 - APPC Update – Mark Jones

Discussion Item – Should Senate offer a resolution on campus safety?
- D. Old Business
- E. New Business
 - *1. Proposal for a Professional Science Master in Environmental Science & Management in CLAS
- F. Question Period
 - 1. Questions for Administrators
 - 2. Questions from the Floor for the Chair
- G. Reports from Officers of the Administration and Committees
 - President's Report (16:00)
 - Provost's Report
 - Report of the Vice President for University Advancement
- H. Adjournment

***The following documents are included in this mailing:**

- B Minutes of the Faculty Senate Meeting of October 6, 2014 and attachments
- C.1 OAA Response to October 2014 Senate Actions
- E.1 Proposal for a Professional Science Master in CLAS

FACULTY SENATE ROSTER

2014-15 OFFICERS AND SENATE STEERING COMMITTEE

Presiding Officer... Bob Liebman;

Presiding Officer Elect... Gina Greco; Past Presiding Officer... Leslie McBride

Secretary... Martha W. Hickey

Committee Members: Linda George (2016) and Swapna Mukhopadhyay (2016)

Gary Brodowicz (2015) and Lynn Santelmann (2015)

David Hansen *ex officio*, Chair, Committee on Committees, Maude Hines, *ex officio*, IFS Representative

****2014-15 FACULTY SENATE (62)****

All Others (9)

Hunt, Marcy	SHAC	2015
†Luther, Christina	OIA	2015
Baccar, Cindy	EMSA	2016
Ingersoll, Becki	ACS	2016
Popp, Karen	OGS	2016
Skaruppa, Cindy	EMSA	2016
<i>Arellano, Regina</i>	<i>EMSA</i>	<i>2017</i>
<i>Harmon, Steve</i>	<i>OAA</i>	<i>2017</i>
<i>Riedlinger, Carla</i>	<i>EMSA</i>	<i>2017</i>

College of the Arts (4)

†Boas, Pat	ART	2015
Griffin, Corey	ARCH	2016
<i>Babcock, Ronald</i>	<i>MUS</i>	<i>2017</i>
<i>Hansen, Brad</i>	<i>MUS</i>	<i>2017</i>

CLAS – Arts and Letters (8)

Dolidon, Annabelle	WLL	2015
Mercer, Robert	LAS	2015
†Reese, Susan	ENG	2015
†Santelmann, Lynn	LING	2015
Perlmutter, Jennifer	WLL	2016
<i>Childs, Tucker</i>	<i>LING</i>	<i>2017</i>
<i>Clark, Michael</i>	<i>ENG</i>	<i>2017</i>
<i>Greco, Gina</i>	<i>WLL</i>	<i>2017</i>

CLAS – Sciences (8)

†Bleiler, Steven (for Burns)	GEOL	2015
Eppley, Sarah	BIO	2015
Sanchez, Erik	PHY	2015
Daescu, Dacian	MTH	2016
George, Linda	ESM	2016
†Rueter, John	ESM	2016
<i>Elzanowski, Marek</i>	<i>MATH</i>	<i>2017</i>
<i>Stedman, Ken</i>	<i>BIO</i>	<i>2017</i>

CLAS – Social Sciences (7)

Brower, Barbara	GEOG	2015
†DeAnda, Roberto	CHLT	2015
†Carstens, Sharon	ANTH	2016
Padin, Jose	SOC	2016
<i>Davidova, Evguenia</i>	<i>INTL</i>	<i>2017</i>

<i>Gamburd, Michele</i>	<i>ANTH</i>	<i>2017</i>
<i>Schuler, Friedrich</i>	<i>HST</i>	<i>2017</i>

College of Urban and Public Affairs (6)

†Clucas, Richard	PS	2015
Brodowicz, Gary	CH	2016
Carder, Paula	IA	2016
<i>*Labissiere, Yves (for Farquhar)</i>	<i>CH</i>	<i>2016</i>
<i>Schrock, Greg</i>	<i>USP</i>	<i>2017</i>
<i>Yesilada, Birol</i>	<i>PS</i>	<i>2017</i>

Graduate School of Education (4)

†Smith, Michael	ED	2015
McElhone, Dorothy	ED	2016
<i>De La Vega, Esperanza</i>	<i>ED</i>	<i>2017</i>
<i>Mukhopadhyay, Swapna</i>	<i>ED</i>	<i>2017</i>

Library (1)

†Bowman, Michael	LIB	2017
------------------	-----	------

Maseeh College of Eng. & Comp. Science (5)

†Chrzanowska-Jeske, Malgorzata	ECE	2015
Zurk, Lisa	ECE	2015
<i>*Daim, Tugrul (for Bertini)</i>	<i>ETM</i>	<i>2016</i>
Karavanic, Karen	CS	2016
<i>Maier, David</i>	<i>CS</i>	<i>2017</i>

Other Instructional (2)

†Carpenter, Rowanna	UNST	2015
Lindsay, Susan	IELP	2016

School of Business Administration (4)

†Hansen, David	SBA	2015
Layzell, David	SBA	2016
Loney, Jennifer	SBA	2016
<i>Raffo, David</i>	<i>SBA</i>	<i>2017</i>

School of Social Work (4)

Holliday, Mindy	SSW	2015
Cotrell, Victoria	SSW	2016
†Donlan, Ted	SSW	2017
<i>Taylor, Michael</i>	<i>SSW</i>	<i>2017</i>

Date: Oct. 17, 2014; New Senators in italics

* Interim appointments

† Member of Committee on Committees

2014-15 Ex-officio Members of the Faculty Senate

Andrews, Sona K.	Provost & Vice President for Academic Affairs
Aylmer, Françoise	Vice President for University Advancement
Bowman, Michael	Chair, Budget Committee
Bucker, Robert	Dean, College of the Arts
Davis, Lois	Chief of Staff & Vice President for Public Affairs
Dusschee, Pamela	Chair, General Student Affairs Committee
Everett, Margaret	Associate Vice Provost and Dean of Graduate Studies
Fink, Jonathan	Vice President for Research and Strategic Partnerships
Fortmiller, Dan	Vice President for Enrollment Management and Student Affairs (interim)
Fountain, Robert	Chair, Undergraduate Curriculum Committee
Greco, Gina	Advisory Council (2014-2016)
Hansen, David	Chair, Committee on Committees
Hickey, Martha	Secretary to the Faculty
Hines, Maude	Interinstitutional Faculty Senate lead representative (Jan 2014-Jan. 2017)
Hitz, Randy	Dean, Graduate School of Education
Holt, Jon	Chair, Library Committee
Jhaj, Sukhwant	Vice Provost for Academic Innovation and Student Success
Kinsella, David	Chair, Graduate Council
Labissiere, Yves	Advisory Council (2013-2015)
MacCormack, Alan	Advisory Council (2013-2015) & Chair, ARC
Magaldi, Karin	Co-chair, Teacher Education Committee (with William Fischer, fall term)
	Vice Provost for Academic Personnel & Leadership Development
Marrongelle, Karen	Dean, College of Liberal Arts and Sciences (interim)
Marshall, Scott	Dean, School of Business Administration (interim)
McBride, Leslie	Advisory Council (2014-16)
Mercer, Robert	Advisory Council (2014-16) & IFS (Jan. 2013-Jan. 2016)
Miller, Randy	Chair, Intercollegiate Athletics Board
Moller, Mary	Director for Government Relations
Moody, Marilyn	Dean, University Library
Nissen, Laura	Dean, School of Social Work
Noll, Eric	ASPSU President
Price, Andrea	Chair, Scholastic Standards Committee
Padin, Jose	Chair, Educational Policies Committee & IFS (Jan. 2015- Jan. 2018)
Percy, Stephen	Dean, College of Urban and Public Affairs
Peyton, David	Chair, Faculty Development Committee
Reynolds, Candyce	Interinstitutional Faculty Senate (to Jan. 2015)
Reynolds, Kevin	VP Finance & Administration (interim)
Rueter, John	Advisory Council (2013-2015)
	Chair, University Studies Council
Su, Renjeng	Dean, Maseeh College of Engineering & Computer Science
Toppe, Michele	Dean of Students and Student Life
Wiewel, Wim	President

Note: Pursuant to the Constitution of the Portland State University Faculty (Art. V, Sec. 1, 1) chairpersons of constitutional committees, members of the Advisory Council, and representatives to the Interinstitutional Faculty Senate who are not serving as elected members shall serve as *ex-officio members* of the Faculty Senate.

PORTLAND STATE UNIVERSITY

Minutes: Faculty Senate Meeting, October 6, 2014
Presiding Officer: Robert Liebman
Secretary: Martha W. Hickey

Members Present: Arellano, Babcock, Baccar, Bleiler, Boas, Bowman, Brodowicz, Brower, Carpenter, Carstens, Chrzanowska-Jeske, Clucas, Cotrell, Daescu, Daim, Davidova, De Anda, De La Vega, Dolidon, Elzanowski, Eppley, Gamburd, George, Greco, Hansen (Brad), Harmon, Holliday, Ingersoll, Karavanic, Labissiere, Layzell, Liebman, Lindsay, Loney, Luther, Maier, McElhone, Mercer, Mukhopahyay, Popp, Raffo, Reese, Riedlinger, Rueter, Santelmann, Schrock, Schuler, Stedman, Taylor, Yeshilada, Zurk

Alternates Present: Messer for Carder, Ryder for Skaruppa

Members Absent: Childs, Clark, Donlan, Griffin, Hansen (David), Hunt, Padin, Perlmutter, Sanchez, Smith

Ex-officio Members

Present: Andrews, Aylmer, Bowman, Davis, Fink, Fortmiller, Hansen, Hickey, Hines, Labissiere, Marrongelle, MacCormack, Marshall, McMillan for Noll, Mercer, Reynolds, Rueter, Su, Toppe, Wiewel

A. ROLL

B. APPROVAL OF THE MINUTES OF THE JUNE 2, 2014 MEETING

The meeting was called to order at 3:03 p.m. The June 2, 2014 minutes were approved as published. Senators were asked to report their **alternates** for the year.

C. ANNOUNCEMENTS AND COMMUNICATIONS FROM THE FLOOR

The agenda was revised to place the interim report from the APPC under C, announcements, and to add the Resolution to Establish a Joint Task Force on Academic Quality as E2 (published to the Senate web as item E3; see minutes attachment B6).

Presiding Officer Bob Liebman welcomed senators and 2014-15 ex officio members to the new term and to what promised to be an exceptional year. LIEBMAN reminded Senate of its constitutional powers regarding faculty welfare, educational policy and curriculum, and alterations to the blueprint of the University. He noted two important 2013-14 resets (see slides, minutes attachment B1): The first was Senate bill 270, creating HECC and devolving power to individual Oregon campuses. He looked forward to working with a Board of Trustees that he hopes will see this as a shared opportunity to improve higher education. The second was the outcome of the

campaign for a PSU-AAUP contract and its implications for Faculty Senate. These include the charge to develop a new post tenure review process under the P&T Guidelines, and an invitation to form a joint task force on academic quality, an idea that originated from the Senate's own 2011 resolution, proposing "A Holistic Approach to Strategic Institutional Development."

Among other 2013-14 legacy issues, LIEBMAN noted the need to figure how the selection of the faculty representative to the Board fits into the faculty governance system. He described two major campus initiatives already underway—a new strategic planning process and the academic program prioritization (APP), which he described as a 360 degree look at the way that we offer instruction, support research and move people towards degrees and certificates. He also mentioned another look at summer session, a textbook affordability initiative, and the proposal for a School of Public Health. Here, he introduced the interim dean who is guiding the new school proposal process, Elena Andresen.

LIEBMAN proposed that all of these activities should aim to bring data to dialogue, look to comparators, and nurture leadership for the long haul. To advance its agenda, Senate may need to continue discussions over a second monthly meeting and might consider video-recording sessions. He said he would disseminate "voters pamphlets" to provide information to engage senators in preparing for meetings. He advocated re-thinking the campus leadership structure and observed that PSU excels at figuring out how with a dearth of money you can get by with a wealth of ideas. He encouraged faculty to take part in the emerging committees.

LIEBMAN reviewed Robert's rules (B1, p.2) and highlighted the avenues for faculty to propose items for Senate consideration and the role of the Committee on Committees (see B1, p.3).

IFS

HINES reported on noteworthy items from the September meeting of IFS in Bend, OR, including sessions with Ben Cannon and Brian Fox of the Higher Ed Coordinating Commission (HECC) and with Senator Michael Dembrow. HECC may shift its formula for allocating funds (from SCH to graduation rates and mission fulfillment) and is concerned about textbook affordability, CPL, and articulation between higher ed and K-12, as it reviews the goals of higher ed in Oregon. IFS also considered issues of academic quality in the face of changing metrics, reverse transfer of credit to community colleges, and part-time/full-time faculty ratios. HINES underscored the need for avenues of communication across institutions like IFS, now that there no longer is a central agency speaking on behalf of higher ed. She urged senators to communicate on issues they would like her to take back to IFS. Fellow IFS senator MERCER agreed that these were the high-points of the meeting.

IFS meeting minutes will be posted here: <http://oregonstate.edu/senate/ifs/min/2014/>

LIEBMAN introduced Mark Jones, chair of the Academic Program Prioritization Committee (APPC).

APPC Update

JONES introduced the new ad hoc APP committee convened in June to represent the University as a whole over the next phase of APP. (See slides, minutes attachment B2) APPC's charge is to determine the criteria and "categories" according to which all academic credit-granting and degree-related programs will be reviewed as part of an on-going practice. Metrics will be quantitative and qualitative. He explained the rationale for an internal process of taking stock and underscored its parallel relationship to established faculty governance processes.

JONES outlined draft guidelines for the new APP system, including a recommendation to combine review for programs that share substantially the same resources. They have tentatively identified 180 academic programs, half of which are in CLAS. Common criteria under consideration for beta testing include: 1) demand; 2) quality; 3) productivity; 4) financial performance; 5) relation to mission; and 6) trajectory. Programs reviewed could be assigned to three categories: 1) experiencing challenges; 2) healthy; and 3) growth opportunity (B2, pp 5-6). JONES said that the APPC rejects assigning quotas for each category. The APPC plans further outreach activities and opportunities to give feedback this fall term. JONES asked faculty to review APP materials and direct comments to: appc-discuss@lists.pdx.edu [Applause.]

MAIER asked how frequently the APP process would be applied. JONES said every 3 to 5 years was typical. DAIM asked whose priorities we were going after—the community's, the administration's, or students'—and what experts would do the scoring? JONES replied that the six proposed criteria are determined by academic priorities, and the APPC has tried its best to distill those from PSU's mission and community values. GAMBURD commented on the amount of work involved and asked if there were any resources to support APP. JONES noted that APP has had the support of ex officio members and an intern from the PACE program, but it would be need volunteers for the program scoring teams (PSTs). LIEBMAN advocated the need for partnerships with the other task forces underway to support the work of APP.

LIEBMAN introduced interim VP for Finance and Administration Kevin Reynolds, and welcomed members of the Presidential Task Force on Campus Safety

Campus Safety Update

REYNOLDS said that he was seeking Senate input on the on-going dialogue around campus safety and the potential creation of a PSU police department. He reviewed the key findings of the Task Force on Campus Safety (see slides, minutes attachment B3), emphasizing that the number of campus safety officers has not kept pace with PSU's growth and that there are more violent offenses and property crimes than many realize (B3, pp 1 & 3). He noted that PSU is the only one of the Urban-21 state-supported campuses not to have sworn police officers. He explained the operational differences between safety officers and sworn officers, and described the alternatives to PSU's adding sworn police officers that had been explored and rejected (B3, p.4). He reviewed progress on other safety recommendations and the potential cost of and requirements for training and oversight, if sworn police officers were added (B3, p.5).

KARVANIC asked if there was concern that there were only 85 responses to the 2014 campus survey (B3, slide 5). REYNOLDS mentioned the campus forum planned for 10/7 to gather further comment. Phillip Zerzan, Chief of Campus Safety, clarified that the 85 responses were comments directed to the Task Force Report and the only survey he was aware of was the 2013 ASPSU survey [307 responses]. SCHULER asked if statistics were available on the number of safety officers who had been hurt on duty. ZERZAN said yes.

TAYLOR wondered if there had been sufficient outreach to the city, given that the only response cited was from the central police commander (B3, p. 4); and he expressed concern about replicating difficulties that the city police had been experiencing. REYNOLDS replied that the current system does not work, that there were Title 9 and jurisdictional issues, and situations when the Portland police responded with delay. ZERZAN noted that Campus Safety had worked cooperatively with the Portland Police, but there were important differences between campus and municipal policing. A campus police department would have the University as its priority.

LIEBMAN clarified that the meeting had not moved to a committee of the whole, and minutes were being taken of the discussion of the administrative report.

GAMBURD asked how many universities did not have sworn police officers (compared to the 657 campuses that did). ZERZAN said he was not aware of any public campus with over 15,000 students without sworn police officers. Task Force member Chris Henning (AJ) noted that the FBI only tracks institutions with sworn police officers, but PSU appears to be an anomaly.

FINK asked for comment on the dichotomy between the image that PSU likes to project as a safe campus and the reality of the data. REYNOLDS invited Dean of Students Michele Toppe to respond. TOPPE said that PSU is in a very vulnerable position. She noted that incidents occur weekly, describing an assault on a PSU student in the Park Blocks last weekend. The Portland police did not file report on what was to them was a minor incident, although the student had a cut that required treatment.

LAYZELL agreed that Campus Safety was obviously understaffed and understood the worry, but asked if Campus Safety could cross off “armed” from its sworn officer description and still achieve 98% of what it needed to achieve. REYNOLDS noted that U of O, OHSU, and OSU had not gone down that route. Task Force member and Asst. Dean of Student Life Domanic Thomas argued that PSU would have to advocate for the legal authority at the state level to avoid jurisdictional issues arising from having unarmed officers. ZERZAN stated that sworn officers are required to have weapons training, but are not always required to carry a weapon; however, he argued that in the U.S., we are policing an armed populace. GRECO was struck by the fact that of the 21 urban campuses, although PSU has many fewer safety officers, it already has the lowest violent crime rate (B3, slide 11). She asked how much can be changed by introducing armed police officers? REYNOLDS emphasized that PSU’s numbers have remained constant over the last five years, although crime rates generally have declined. ZERZAN added that there are still underlying authority

issues that hamper the response of safety officers to incidents. LINDSAY asked why staffing had not increased to offset PSU's growth. REYNOLDS replied that the decision had been a deliberative process.

LIEBMAN thanked the presenters for informing the Senate in the spirit of promoting an open discussion of the issues. [Applause.]

[Secretary's note: The President and Provost offered their reports at this time.]

D. UNFINISHED BUSINESS

None.

E. NEW BUSINESS

1. Curricular Proposals Consent Agenda

The curricular proposals listed in "E.1" were ADOPTED as published.

2. Resolution to establish a Joint Task Force on Academic Quality

LIEBMAN reminded senators that in addition to APPC, faculty were needed to staff two important teams triggered by the PSU-PSUAAUP bargaining agreement--on issues of family friendly policy and academic quality (if convened by the Faculty Senate). He noted that augmenting support for quality teaching, research and student success had been key concerns of the April 2011 Senate Holistic Resolution that had recommended applying to comparators:

<http://www.pdx.edu/faculty-senate/resources-for-items-under-discussion>

SANTELMANN/BRODOWICZ MOVED the proposal to create a Joint Task Force on Academic Quality, published as E3. [Note: advanced as item E2 in the revised agenda; see minutes attachment B6].

ZURK asked for clarification of the group of faculty referenced in the Resolution. LIEBMAN responded that it was all full-time faculty. MAIER pointed out the discrepancy in the date for June Senate meeting. LIEBMAN thanked him for the correction; he added that the STEM initiative was an example of using comparators at PSU. RUETER asked why comparators have to be better than PSU. LIEBMAN said they were aspirational, that the committee would look at how things were done right at other similar campuses. The amount of data would not be a problem, it will be deciding which questions can be thoughtfully answered using a comparator (for example, how to do targeted hiring). GRECO noted that we have different lists of comparators for different purposes, and that if we are talking about academic quality, she hoped we would aspire to improve. LIEBMAN cited the University's pledge in the bargaining LOA to support the effort.

HANSEN (Music) asked if the task force would do anything besides looking at comparators mentioned in the four points of the charge. Would it look at other topics like teaching? LIEBMAN said the comparators would be the anchor that would help us determine how to better address questions like student success, and deferred to Maude Hines, who was Senate Presiding Officer when the Holistic Resolution was passed.

HINES: The Holistic Resolution of 2011 was really asking a question about resources. That is, if you expect a certain amount of research, a certain level of teaching or student success, what other universities are achieving all of this, how are they doing it, and with what resources? As the University embarks on several concurrent, deeply engaged processes (strategic planning, the structure of CLAS, APP), it's very important to have a committee that is looking at how we can achieve the things that we are moving towards with the resources available.

BLEILER called the question.

The RESOLUTION to establish a Joint Task Force of Academic Quality PASSED by a majority voice vote, with one abstention.

INGERSOLL asked about the status of the Curricular Consent Agenda.

LIEBMAN confirmed that with nothing withdrawn, the Consent Agenda was adopted as published in E1.

F. QUESTION PERIOD

1. Questions for Administrators

None.

2. Questions from the Floor for the Chair

None

G. REPORTS FROM OFFICERS OF THE ADMINISTRATION AND COMMITTEES

President's Report

Welcoming faculty to a full and busy year, WIEWEL offered an update on the budget and a preview of upcoming topics. While enrollment is flat, non-resident attendance is up 10%, which will help fill in an anticipated 3 million dollar budget gap. However, the new Board of Trustees has made it clear that it will not approve a deficit budget in the future. Last year closed with a one million dollar loss instead of a budgeted 11 million shortfall, with a cushion of unspent funds in some units. University Advancement, under VP Francoise Aylmer, completed its merger with the

PSU Foundation, successfully raising 39.3 million dollars. WIEWEL also noted the continued recognition for PSU from *U.S. News and World Report* and the high national ranking of the PSU Business Accelerator in the 2014 UBI Global Benchmarks.

WIEWEL listed six key issues for the year: collaboration of all constituencies at PSU in a new strategic planning process, charged by the Board of Trustees (see minutes attachment B4); continuation of the work of ReThink PSU; discussion of the future structure of CLAS; the joint School of Public Health initiative; the upcoming 2015 Oregon Legislature session; and the debate on the Campus Safety recommendations.

WIEWEL thought that APPC efforts and the proposed Task Force on Academic Quality could feed into the work of identifying and discussing questions raised in the planning process. He added that he could imagine a Strategic Plan document having a sentence stating that prioritization of academic programs will be driven by the outcomes of the Academic Program Prioritization process. He expressed optimism about increasing funding for public higher education and said that a collaborative effort among Oregon institutions, administration, faculty, and students would be key to optimizing the outcome. The Presidents Council will be meeting monthly and coordinating with HECC. He also characterized himself as a reluctant convert to the addition of armed police officers after the Reynolds High School shooting. He encouraged faculty to approach the issue with an open minds.

In conclusion, WIEWEL announced interim appointments for a number of open administrative positions where searches are in progress or under consideration: Athletic Director (Valerie Cleary, interim), Dean of Enrollment & Student Management (Dan Fortmiller, interim) and Dean of the School of Business Administration (Scott Marshall, interim), VP for Finance (Kevin Reynolds, interim), Vice Provost in OAA (internal search in progress), and Chief Diversity Officer. [Applause.]

Provost's Report

ANDREWS welcomed faculty and thanked them for their ongoing work, highlighting the contributions of those in Biology and Chemistry to the realization of the Collaborative Life Sciences Building. In reference to the HINES IFS report, she clarified that PSU already has reverse a transfer agreement with PCC, so that PSU credit can be applied to a PCC Associates degree.

ANDREWS announced a new format for her remarks: The Provost's comments will be distributed in a handout that she will not read, to be published in the minutes (see minutes attachment B5). She also referred faculty to her online blog, a response to her impression that broad-based communication with faculty is difficult at PSU. She intends to share information and some of the thinking and input that goes into decision-making. (See <http://www.pdx.edu/oaa/home>.)

ANDREWS asked to use the remainder her time start a conversation with senators about post tenure review, keeping in mind that it is a faculty driven process and that PSU's report to its accreditors is due in Spring 2015.

MAIER: Something important to remember is that many long-time faculty joined a different university and that they came here with certain expectations and have built their careers a certain way. It's important that they be judged on what they embraced at the time rather than what we are actually prioritizing at this moment.

BLEILER: What has concerned me as a previous chair of the Faculty Development Committee is the paucity of resources that are available for faculty. We could easily decide that as a part of post-tenure review that a faculty member needs to perform certain tasks and that this will come down to them as essentially an unfunded mandate. Any post-tenure review process that might recommend ways for a faculty member to modify behavior or move forward in his or her career needs to have an adequate resource base for faculty to get the job done.

LIEBMAN: A Post-tenure Review Committee has convened, including David Raffo, Michele Gamburd, Michael Smith, Ron Narode, Sy Adler, and Gwen Shusterman. I'm confident that they will have a report ready for the December agenda.

ANDREWS concluded by directing senators to item C1 in the Agenda. She noted that these monthly memos are also posted on the web. She asked that senators let her know if this system for acknowledging OAA's response to Senate actions doesn't work; she is open to suggestions for another system. [Applause.]

[Secretary's note: the meeting returned to agenda item E. at this point.]

LIEBMAN reminded senators from CLAS that they would need to caucus after adjournment to select representatives to the Committee on Committees.

ADJOURNMENT


The meeting was adjourned at 5:07 pm.

Senate 14-15

Welcome

<http://www.pdx.edu/faculty-senate/>

Roll



Senate: Represents PSU FT Faculty

The Faculty shall have power, subject to legal limits, (1) to take action to promote faculty welfare. The Faculty shall have power (2) to act upon matters of educational policy,(3) to enact such rules and regulations as it may deem desirable to promote or enforce such policies, and (4) to decide upon curricula and new courses of study. This power shall include, but not be confined to, action upon the establishment, abolition, or major alteration of the structure or educational function of departments or of programs which include more than one department or instructional unit of the University. **The Faculty will normally exercise this power through its representative, the Senate.** From ARTICLE III, Section 1. Faculty Powers – PSU Faculty Constitution

Senate 14-15

Welcome to
an Exceptional Year

Exceptional
Why?

Our Inheritance: 2 resets of 2013-14

Board of Trustees (SB270)
Devolved power to campuses: left open authority over decisions & decision-making
OR – Campus BOTs, HECC, & Shared Services (2013)
VA Restr HE Financial & Admin Operations (2005) VCU/UVA
AAUP Contract Campaign (re Faculty Senate)
Maintain “mutual agreement” P&T Guidelines/evaluations
+ post-tenure review + past practice
Move toward comparators – target & chart progress

Legacies of 2013-14: Our work

Board of Trustees
Role in Shared Governance/Relationship to Faculty Senate (representation, dialog) > Constitution + Strategic Plan
CBA
Post-Tenure Review + Allocation Increases [NWCCU (OAA)]
TF Family Friendly Policies
TF Academic Quality
MOU Summer Session
OAA
Academic Program Prioritization
TF Textbook Affordability
School of Public Health

PSU in Play - 2014-15+

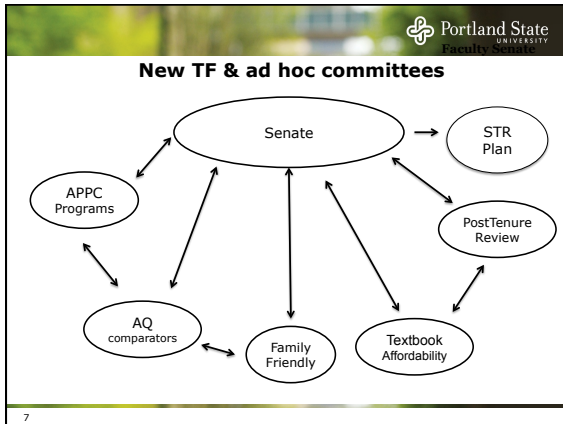
How can we/Senate guide PSU's future?

Open the conversation

Bring data into dialog - comparators

Allow for options & nurture leadership

- Year-long: discussion items & open forums
- Possible 2nd Senate mtgs (occasional)



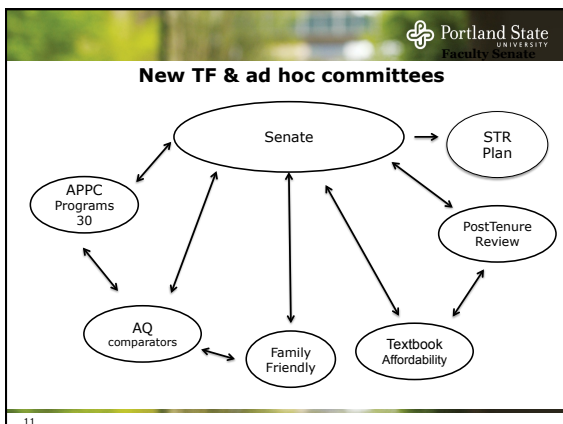
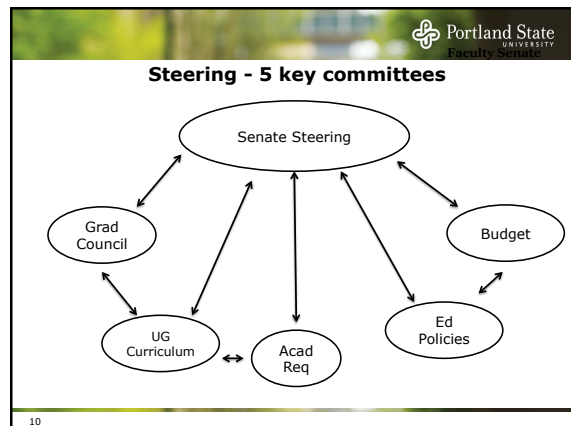
- ### Leverage New Ideas 2014-15
- Working partnership: Data warehouse
APPC + AQ + Strat Plan
AQ + Family Friendly + Strat Plan
(Query engine parallel to Budget data)*website
 - Film/Record Senate meetings (UO)
 - Voter's Pamphlet
 - ?

Dangers 2014-15

Surplus of management ↔ Deficit of leadership
 Convention/Compliance ↔ Creativity/Entrepreneurship*

Examples: ReThink – Senate reorganization 2008 - 11

What can you do?

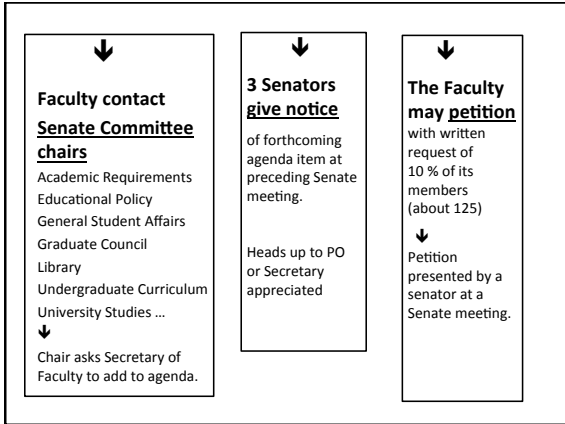


- ### Roberts' Rules @ PSU
- Protect Senator's right to free and fair debate
 - PSU Senator's rights of proxy and referral
 - Only Presiding Officer recognizes speakers
 - Senators sit below the rail (recording)
 - Speakers identify themselves by name and unit
 - Debate begins after motion stated
 - Move to amend/withdraw, table, limit debate
 - Majority decides (hands, voice, clicker, roll)
 - PSU Consent agenda
 - PSU Committee of the Whole No minutes/decisions

Bring issues/resolutions to Senate

All faculty members may

- propose agenda items to PO for consideration by Steering Committee (which can refer/make motions)
- contact committee chair
- send Questions for Administrators (1 week)
- ask Questions from Floor for the Chair



10 Senators propose Constitutional Amendment

- "Notice of a proposed amendment must be accompanied by the signatures of ten elected members of the Senate and must be filed with the Secretary to the Faculty with a request that the agenda of the next Senate meeting, regular or special, include presentation of amendments."
- A 2/3 majority of senators present and voting required to amend Faculty Constitution.

Today

Consent agenda – Items to withdraw (written request to PO before end of roll)

Vote Resolution – w/o clickers

Caucus after adjournment – Committee on Committees (3 CLAS - A&L, SS, Sci) >>>

Return to agenda:
Announcements & Communications:
OAA Response (June 2014)**
IFS Report – Maude Hines

Portland State University

Committee On Committees**

- Selected by divisional caucus of senators
 - 2-year term
 - Must be Senator during term
- Appoints chairs/members of Senate constitutional & ad hoc committees
- Recommends chairs/members of administrative committees to President/Provost

Portland State University

E3. Joint TF Academic Quality

http://www.pdx.edu/faculty-senate/sites/www.pdx.edu/faculty-senate/files/E3%20Acad%20Qual%20Resolution_10_6_14.pdf

Academic Program Prioritization Ad Hoc Committee



Sy Adler



Talya Bauer



Samuel Henry



Mark Jones



Karin Magaldi



John Rueter



Lynn Santelmann



Michael Bowman



Steve Harmon



Kathi Ketcheson

APPC



Sy Adler



Talya Bauer



Samuel Henry



Mark Jones



Karin Magaldi



John Rueter



Lynn Santelmann



Michael Bowman



Steve Harmon

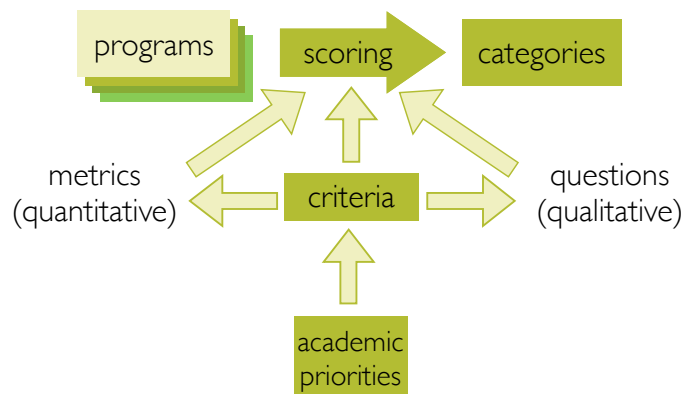


Kathi Ketcheson

Why are we here?

- Committee appointed in June based on nominations from faculty
- Members nominated for their (long) experience at PSU and their ability to represent the university as a whole
- Not necessarily experts in academic program prioritization (APP)
- Looking to the Senate (and the broader PSU community, including staff and students) for guidance, feedback, and help.

What is Program Prioritization?

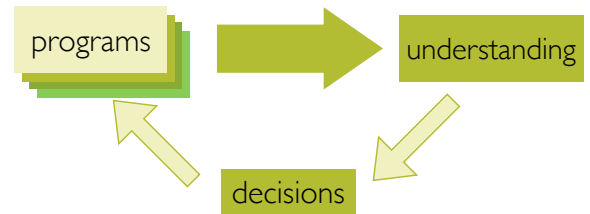


Why do we need a process like this?



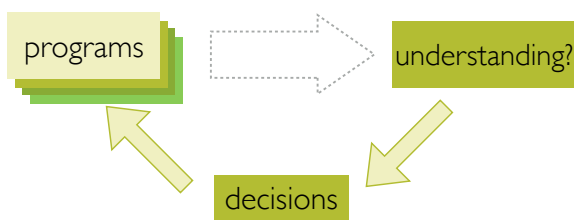
This is about **taking stock**, developing a **university-wide understanding** of who we are and what we do

Why do we need a process like this?



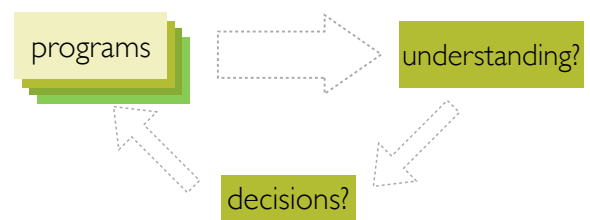
This is about guiding **strategic investments** in programs that best support **institutional goals**

Why do we need a process like this?



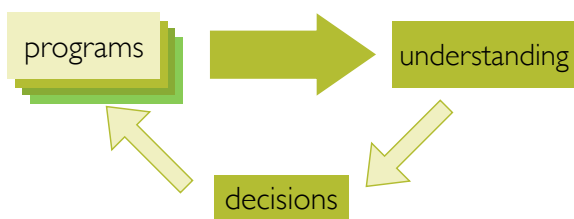
Without it, we risk:
Decision making in a vacuum

Why do we need a process like this?



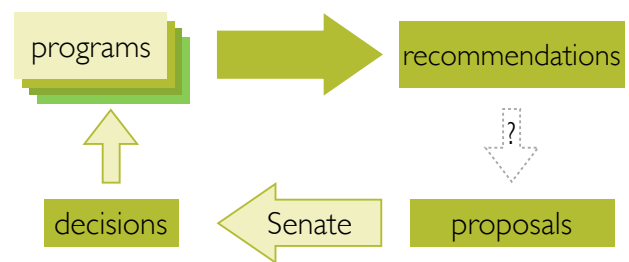
Without it, we risk:
Stagnation, inability to respond & reallocate resources

Why now?



Allow the thoughtful, careful development of a regularized process.
Don't wait for an emergency.

APP in the Context of Shared Governance



The Senate has a key role to play in defining a process to fill this gap

Academic Program Prioritization



Weighing all programs against a common set of criteria

Academic Program Review



Determining whether a program meets the bar for its field

Academic Program Prioritization



All programs considered at the same time

Academic Program Review



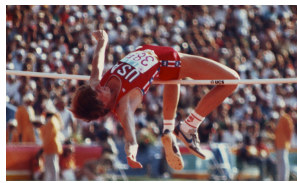
A subset of programs considered each year

Academic Program Prioritization



Conducted at the program level (with multiple programs per unit)

Academic Program Review



Conducted at the unit/department level

Academic Program Prioritization



Broad look at information

Academic Program Review



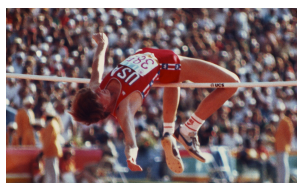
Deep look at information

Academic Program Prioritization



Internal review, with criteria including performance and relationship to academic priorities

Academic Program Review



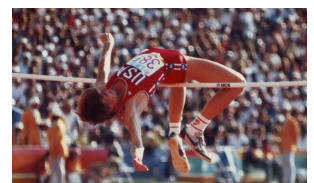
Internal and external review, with criteria based on discipline standards and metrics

Academic Program Prioritization



End result: programs assigned to categories; recommendations for investment/reorganization

Academic Program Review



End result: action plans for carrying departments forward

Origins and Process

Initial Conversations in Senate in Fall 2013

PORTLAND STATE UNIVERSITY FACULTY SENATE

TO: Senators and Ex-officio Members to the Senate
FR: Martha Hickey, Secretary to the Faculty

The Faculty Senate will hold its regular meeting on **November 4, 2013**, at 3:00 p.m. in room **53 CH**.

AGENDA

- A. Roll
- B. *Approval of the Minutes of the October 7, 2013 Meeting
- C. Announcements and Communications from the Floor
AAUP Bargaining Update
- D. Unfinished Business
 - *1. Promotion and Tenure Guidelines Revision Committee Interim Report
See Faculty Senate Schedules web page for full draft text of the proposed revisions
<http://www.psu.edu/faculty-senate/senate-schedules-overview/>
- E. New Business
 - *1c. Undergraduate Curriculum Committee (UCC) Curricular Proposals Consent Agenda
 - *2. Scholastic Standards Committee (SSC) Proposal to approve Online Grade-to-Grade Changes
- F. Question Period
 1. Questions for Administrators
 2. Questions from the Floor for the Chair
- G. Reports from Officers of the Administration and Committees
 President's Report (16:00)
 Provost's Report
 Report of the Vice-President of Research and Strategic Partnerships
 Report of the Internationalization Council
- H. Adjournment

***The following documents are included in this mailing:**

- I. Minutes of the Faculty Senate Meeting of October 7, 2013 and attachments
- I-1a. Interim Report of Ad Hoc Committee on the Revision of P&T Guidelines
- I-1c. Curricular Consent Agenda
- I-2. Proposal to approve online grade-to-grade changes

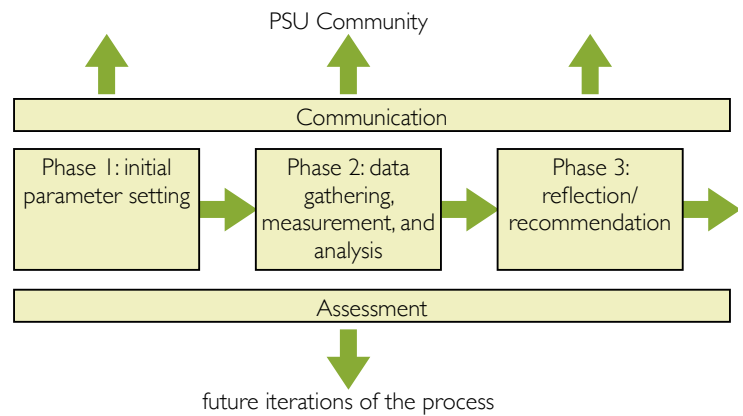
Process Academic Program Prioritization Ad Hoc Committee

Feb - May 2014

Shelly Chabon		Mark Jones
Jon Fink		DeLys Ostlund
Kris Henning		Barbara Sestak
		Steve Harmon

Charge: Develop the initial groundwork for how PSU will conduct its academic program prioritization process

Key components



Organization

An Academic Program Prioritization Committee (APPC) oversees the process

Program Scoring Teams (PSTs) focus on data gathering, measurement, and analysis, with broad faculty representation

Charge to APPC, June 2014

D-1 adopted June 2, 2015

MOTION: Faculty Senate approves the creation of the Academic Program Prioritization Ad Hoc Committee as described in Item "D-1."

Academic Program Prioritization Ad Hoc Committee (May 12, 2014)

As per recommendations from the Academic Program Prioritization Ad Hoc Committee, as adopted, with some changes, by the Faculty Senate Steering Committee and the Provost, PSU Faculty Senate proposes the establishment of the *Academic Program Prioritization Ad Hoc Committee* (referred to below as the *APPC*). The President and Provost, in consultation with the Faculty Senate Steering Committee, have given assurance that the total number of tenure-line positions will not decrease as a direct result of the Academic Program Prioritization Process, although untenured faculty may be assigned to another department or program depending on needs and expertise.

COMMITTEE CHARGE:
 The APPC is charged with conducting work in the initial, parameter-setting phase of the review process; assigning programs to prioritization categories in the second phase; and overseeing assessment and communication components of the review. In doing so the APPC will:

- Develop additional specifications for the composition and function of the Prioritization Scoring Teams;
- Develop additional specifications for identifying and appointing those responsible for assessment and communication activities;
- Determine, in consultation with the Provost's office and the Faculty Senate, the parameters and benchmarks against which programs will be assessed;
- Determine the type of information that needs to be gathered;
- Compile initial academic program reports submitted by scoring teams;
- Solicit feedback on initial reports from each academic program and develop revised assignment of programs to prioritization categories;
- Participate with existing Faculty Senate standing committees, e.g., Budget Committee, in determining final recommendations.

COMMITTEE COMPOSITION:
 The APPC will consist of 7 faculty members with strong prior leadership experience and an understanding of PSU drawn from multiple roles across campus. The APPC may call on other persons and offices as needed for information. Support for the APPC will be provided by the Provost's Office and the Office of Institutional Research and Planning.

TIMELINE:
 The APPC will be appointed Spring 2014 by the President based on recommendations from the Faculty Senate Steering Committee, the Faculty Advisory Committee, and the Provost through a nomination process. Assessment parameters and benchmarks, as well as type of information that needs to be collected will be determined early so that ORP and units can begin preparing information mid-Fall for submission to APPC in January 2015. APPC will receive, compile, and classify scoring reports, and will work with selected programs to collect additional information. *handwritten note: Winter 2014 - APPC will make initial recommendations as an initial meeting*

Developing a Useful Tool



No faculty-driven, university-wide, systematized process

Unattainable: there is no pause button

Developing a Useful Tool



Work “fast” to provide PSU with an important (currently missing) tool

Work “slow” to ensure that the result is based on data and methods that we can trust

Developing a Useful Tool



- Start with a good design
- Solicit user feedback
- Refine and improve

A long-term commitment to build an effective and useful tool for the PSU community

Draft Proposals

Programs

An *academic program* is any collection of activities that *consumes resources* and either:

- *contributes transcribed courses* to a credential (e.g., UNST, Honors, IELP); or
- *leads to an academic credential* (e.g., Minor, BA, BS, Certificate, Graduate Degree).

Granularity

Units are not programs: an *academic unit* is an organizational entity, such as a department or school, and can house one or more programs

Guidelines:

- Programs that share substantially the same resources should be combined
- Programs that differ significantly in the resources they use should be separate

Defer to departments/units for final judgement

Criteria

Demand (both internal and external)

Quality (of inputs and outcomes)

Productivity (with consideration of size/scope)

Financial performance (revenue and costs)

Relation to mission (knowledge, scholarship, community)

Trajectory (history, opportunities)

Categories

Experiencing
Challenges

Healthy

Growth
Opportunity

- Not a complete ranking
- No assumption of uniform distribution
- Deeper (second round) analysis/review for programs in the outer categories

The Road Ahead

Fall 2014

- Outreach to campus community
 - Web site/blog/ mailing list
 - In person visits to schools/departments
 - Regular reporting to Faculty Senate
 - ...?
- Finalize parameter choices (programs, criteria, categories) with community input
- Appoint Program Scoring Teams (PSTs)
- Distribute questionnaires to programs

Roles for Senators

- Tell your colleagues about APP
 - And/or ask your Dean/Chair/etc. to invite one or more of us to visit!
- Review the materials we produce
 - And share your feedback
- Join the discussion/check the website
 - appc-discuss@lists.pdx.edu
- Volunteer for the Program Scoring Teams

Roles for Senate

- Provide a forum for discussion and presentation of APP processes, milestones, and results
- Develop a process for turning APP recommendations into governance proposals

Thank You!

Contact address for comments and feedback:

appc-discuss@lists.pdx.edu

(website coming soon)

Campus Safety: Faculty Senate

October 6, 2014



 Portland State
UNIVERSITY

Senate Input On The Creation Of A PSU Police Department

Short presentation

- Focus based on questions and input from Senate Steering committee
- Time for dialog

Additional information

- Longer Presentation tomorrow - Campus Safety Forum
- Longer Power Point Presentation given to the Board of Trustees - provided with your materials
- Final report of the Campus Safety Task Force
- Previous Senate Presentation of Task Force report

2013 Presidential Task Force On Campus Safety

<p>Committee Members</p> <p>Jacqueline Balzer, Staff (chair) Kris Henning, Faculty Valerie Holdahl, Student Debbie Kirkland, Staff Chas Lopez, Staff Mary Moller, Staff Nicole Morris, Student Heather Randol, Staff P.K. Runkles-Pearson, Staff Domanic Thomas, Staff</p>	<p>Ad Hoc Members</p> <p>Phil Zerzan, Staff Bryant Haley, Staff</p>
---	--

Taskforce Report: Part Of A Larger Dialog (Activities & Outreach)

2011:

- CPSO Campus Safety Walk (October) promoted in Vanguard, PSU Today, CPSO website

2012:

- CPSO Campus Safety Walk (October) promoted in Vanguard, PSU Today, CPSO website
- CPSO presentation to ASPSU Senate, 10/30/12
- ASPSU sponsored public forum, 11/30/12

Taskforce Report: Part Of A Larger Dialog (Activities & Outreach)

2013:

- CPSO presentation to Office of Academic Affairs, 2/11/13
- CPSO presentation to Academic Leadership Team, 3/20/13
- CPSO gave 39 presentations and trainings across campus
- A survey on campus safety by ASPSU 307 responses
- Campus Safety Task Force held conversations with 18 departments and community partners
- Campus Safety Task Force held 2 open forums, promoted via university-wide email

2014:

- CPSO meeting with SEIU leadership, 2/5/14
- An online campus safety survey yielded 85 responses 2/14-8/14
- PSU Currently released Task Force report with link to full report and feedback, 3/3/14
- Vanguard released Task Force report, 3/3/14
- Virtual Viking released Task Force report, 4/8/14
- Coffee with the Chief, began on 5/1/14 and is promoted campus wide (Vanguard, PSU Today, CPSO website, Flyers in SMSU, Facebook) – 10 have taken place so far
- Presentation on Task Force findings at Faculty Senate by Dr. Kris Henning 5/5/14
- CPSO outreach email to ASPSU candidates 5/14/14

More Serious Crime & CPSO Activity Than People Realize

Crime/CPSO Activities	5-yr Average	Range
Violent Offenses (rape, robbery, agg. assault)	18.2	12 - 26
Property Offenses (burglary, MV theft, major larceny)	325.6	274 - 375
Calls for Service	6,706.6	5,754 - 8,142
Arrests/Cite-in-Lieu	198.6	137 - 259
Trespass Warnings	114.4	80 - 154

Campus Remains An Attractive Location for Potential Offenders



Access: Easy to get here, get into our buildings

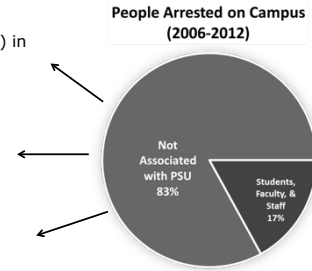
Anonymity: Blend in with students, faculty, staff; hang out in buildings

Availability: Plenty of easy targets, things to steal, places to use drugs

Limited Guardianship: 2012-13 CPSO officers to cover campus 24/ 7 /365

Most Offenders Are Not From PSU

- 87% have prior arrest(s) in Portland metro area*
- 56% arrest(s) for prior property crimes e.g. burglary, auto theft, larceny
- 41% arrest(s) for prior violence e.g. assault, robbery, rape, homicide



* Henning, K., Peterson, C., Stewart, G., (2012). *Criminal History of Suspects Arrested at Portland State University*

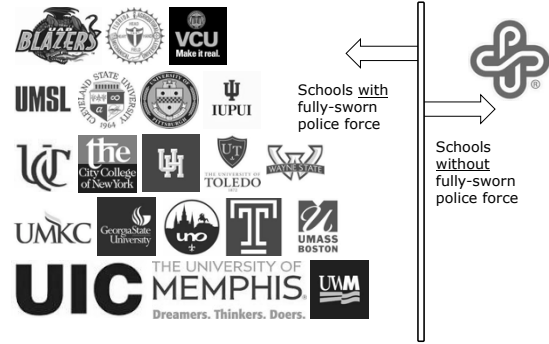
CPSO Staffing At PSU Is Very Low Compared To Most Schools

FBI Uniform Crime Reports (2012)

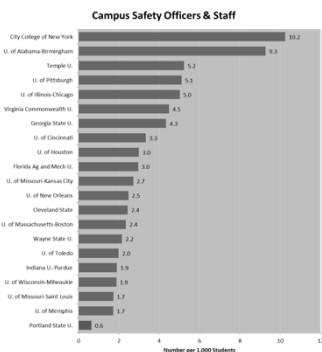
- 657 Universities and Colleges with full Police Department
- Average of 2.5 officers per 1,000 students
- Average of 1.6 civilian employees per 1,000 students
- If PSU was in "average range" we would have 121 employees at CPSO*
 - Currently have 19 officers and staff members
 - Bottom 5th percentile

*Based on 2013 data for students & CPSO staff (OIRP)

PSU Is The Only School In The Urban-21 Without A Sworn Police Dept.



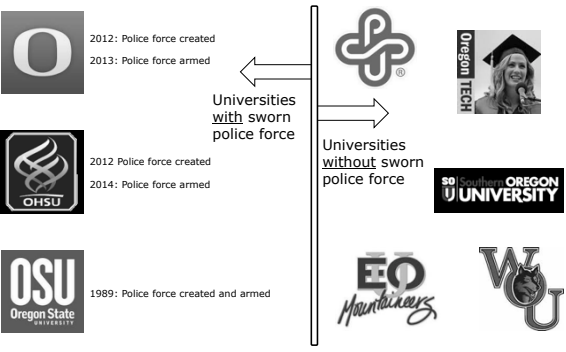
PSU Has The Lowest CPSO Employee Rate Of The Urban 21

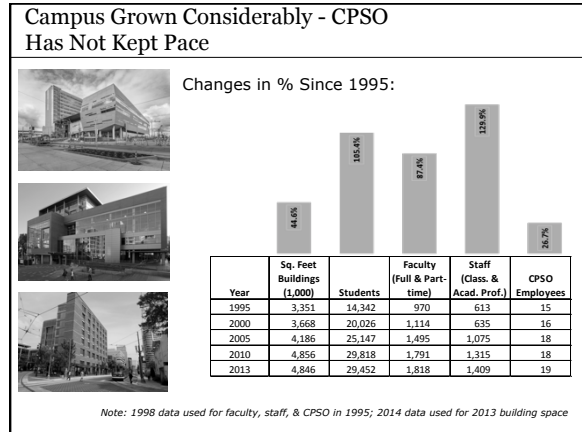
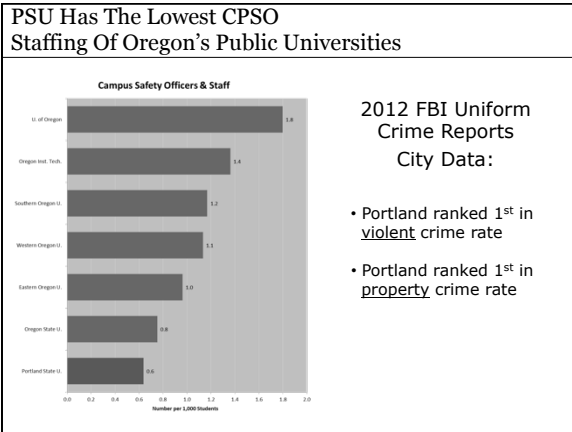


2012 FBI Uniform Crime Reports City Data:

- Portland ranked 21st in violent crime rate
- Portland ranked 10th in property crime rate

Three Public Oregon Universities Have Sworn Police Officers





- ### Safety/Emergency Recommendations
- Create a public safety awareness campaign
 - Continued Outreach planned for 14-15 academic year
 - Communicate expectations of staff and students in emergency situations
 - Ongoing, including training across campus and attendance at all new student orientation sessions
 - Require sign-up for PSU alert system
 - All PSU employees automatically receive PSU Alerts, though they have the ability to opt-out
 - All PSU employees automatically receive timely warnings and nobody has the ability to opt-out

- ### Access Control Recommendations
- Establish official business hours and where possible, regulate access to buildings outside of these hours through electronic systems
 - Consolidation of classes and events outside of business hours is in progress
 - Establish a long-term goal of transitioning all exterior building doors to electronic access control
 - Program in place
 - Recognize the PSU ID card as the only official form of PSU identification and the only method of electronic access control
 - Program in place – free PSU ID cards now available to all faculty, staff and students

- ### Progress
- ✓ Improved access control in buildings
 - ✓ Better lighting in parking garages and Park Blocks
 - ✓ Creation of C.A.R.E. Team (Coordination, Assessment Response, Education)
 - ✓ Enhanced coordination with WRC (Women's Resource Center)
 - ✓ Emergency preparedness training and communications
 - ✓ New CAD (Computer Aided Dispatch) system at CPSO and sexual assault investigator
 - ✓ Increased outreach to students
 - ✓ All faculty, staff and students included in PSU alert and timely warnings

- ### 2013 Task Force Recommendations
- Campus Public Safety Office:**
- Explore ways to ensure access to sworn officers who are appropriately trained in campus policing and available on-site to the PSU campus community

Options to consider:

 - Creation of PSU Police Force
 - Collaboration with OHSU
 - Contract with Portland Police
 - Contract with Oregon State Police
 - Maintain access to non-sworn Campus Public Safety Officers

2013 Task Force Recommendations

Guiding Principle:

"The most ideal campus safety staffing model is one that allows PSU access to dedicated professionals, who are part of the PSU ethos and community, who have sworn police officer status"

Presidential Task Force on Campus Safety Final Report, November 1 2013, p. 19

Differences Between CPSO & Sworn Police Officers

Only Sworn Police Officers can:

- Cite for violations
- Apply a search warrant
- Perform community caretaking
- Perform off campus investigations and follow-up for cases e.g. sexual assaults, mental health checks
- Apply a mental health hold
- Apply an involuntary detox
- Be armed
- Have full powers of arrest and detainment
- Attend State Police Academy training
- Obtain and maintain certification as sworn law enforcement officer
- Receive line of duty death benefits

- It is a crime to escape, resist, or interfere with a sworn police officer

Options - Creation Of A PSU Campus Police Department

"This option is the most common practice throughout the United States. A PSU Campus Police Department would provide the greatest amount of control and direction by the university in recognition of the uniqueness of campus policing, as well as the specific nature of this campus."

Presidential Task Force on Campus Safety Final Report, November 1 2013, p. 22

Options - Portland Police Bureau

"strives to provide an adequate emergency response to the entire city of Portland"

"response is tailored to the best practices for municipal policing"

"may not represent the best practices to the unique service requirements of campus policing"

"specialized area of law enforcement ...formalized through the creation of Campus Police Departments"

Commander Robert Day, Portland Police Bureau Central Precinct, Letter of Support, October 1, 2013

Oregon Health and Science University

"Initially, we chose to pursue contracting with an outside agency and began to transition our Department of Public Safety into an unarmed police force with enhanced training. We put carefully selected officer candidates through a 16-week live-in state certification program. Meanwhile, we reached out to other academic institutions that were using a contracting model — the University of Oregon and Oregon State — and found, in both cases, low levels of satisfaction. There were a variety of concerns, including poor service, lack of oversight, and the cultural mismatch of traditional law enforcement in an academic setting."

Joseph Robertson Jr., M.D. M.B.A, President, OHSU, "A Weighty Decision, June 26, 2014

Oregon State Police

"Please accept this notification that the Oregon State Police is not interested in entering into a contract with Portland State to provide police services."

Superintendent Rich Evans, Oregon State Police, October 11, 2013

Seeking Input On The Creation Of A Campus Police Department

How would it work?

- What values would the department have?
- What accountability and oversight would there be?
- What training would officers undertake?
- How much would a police department cost?
- When would it start?

Campus Police Department Values & Accountability

- As a University entity, a campus police department would retain the same values as CPSO
- A campus police department would continue to report to the Vice President of Finance and Administration and like all other PSU entities, would be accountable to Global Diversity and Inclusion and adhere to all University policies and procedures

Campus Police Department: Oversight Committee

- Membership determined by the University President would consist of faculty, staff and students
- Committee would report to the University President
- Function as a civilian review board
- Ability for University community to report issues and complaints directly to the committee
- Committee could meet monthly or as needed
- Committee would have access to adjudicated force reports and crime log data

Campus Police Department: Training & Cultural Competence

Recruitment- Diverse applicant pool

Training- Campus police officers would attend:

- Basic Police Academy training
- Local Field Training Evaluation Program (FTEP)

Campus involvement:

- Utilization of campus academic experts
- Oversight committee would have the ability to evaluate and provide input into an initial and ongoing training program

Budget For Creation Of A Campus Police Department

- Increase of \$1.5 million- at completion:
 - 1 Director
 - Police Lieutenant/1 Public Safety Lieutenant
 - 3 Police Sergeants/2 Public Safety Sergeant
 - 12 Police Officers/1 Police Detective/ 10 Public Safety Officers
- 3 year implementation plan (approx. 6 police officers in year 1)
- Investment would begin to move campus safety personnel in the right direction:
 - Current officer/student ratio – 0.6/1000
 - Proposed officer/student ratio – 1.1/1000

Increased Cost For Creation Of A Campus Police Department - Perspective

- PSU History of Investments - linked to mission and values:
 - *Tenure track hires*
 - *Advising*
 - *Sustainability*
 - *Research*
 - *University advancement*
 - *Diversity and inclusion*
 - *Strategic enrollment management*
- Commitment to our faculty, staff, students and visitors - making PSU a safe place to work, learn and visit



Feedback Collection & Other Events

Feedback

- Comments: Today
- Comments at Safety Forum: Tomorrow, 9am-10:30am, SMSU 355
- Online: PSU homepage

Summary of Frequently Asked Questions & Answers

- Online tomorrow: PSU homepage

Other Events

- Friday, October 10: Presentation at Administrative Briefing to staff and faculty
- Monday, October 20: Presentation at ASPSU Senate Meeting
- To be confirmed: Meetings with student groups
- To be confirmed: Special Board of Trustees Committee Meeting



B4

www.pdx.edu/president/stategic-planning-2014-15

PROVOST ANDREWS' COMMENTS- OCTOBER 6, 2014 FACULTY SENATE MEETING

Provost Andrews announced a new format for her Senate Report. At each meeting she will make available written information (see **SUPPLEMENTAL WRITTEN INFORMATION PROVIDED BY PROVOST ANDREWS TO THE FACULTY SENATE, OCTOBER 6, 2014** below) to be reproduced in the Senate minutes. She will use her report time for discussion items and feedback.

Discussion/Feedback items asked at meeting:

1. What considerations should the Senate keep in mind in moving forward with developing an effective post-tenure review process?
2. Do senators have any suggestions regarding the format used by OAA for taking action on senate actions? C-1 in Oct 6 Senate packet.

SUPPLEMENTAL WRITTEN INFORMATION PROVIDED BY PROVOST ANDREWS TO THE FACULTY SENATE OCTOBER 6, 2014

Flexible degree RFP

On October 1st I announced to all faculty the [reTHINK PSU: Flexible Degrees RFP](#). Concept proposals are due by **October 30, 2014**. The RFP continues the efforts on [reTHINK PSU](#) and builds on the many innovative projects that were submitted as part of reTHINK PSU: [Provost's Challenge](#).

Provost's Blog (<http://psuprovoastblog.blogspot.com/>)

I have created a [blog](#) to do more than communicate through attending meetings, writing emails, reporting at Faculty Senate, or sharing information on the provost's webpage or the PSU Currently. The blog is to share information and thoughts I have on issues, as well as to create a venue for hearing other perspectives, asking and responding to questions, and learning new ideas.

Drop-in Conversations with the Provost

I am hosting monthly opportunities for faculty and staff members to stop by for face-to-face conversations. I will be available the following dates and times during the fall term for these non-structured, open sessions:

- Thursday, October 30, 3:00 to 4:00, room 296 SMSU
- Monday, November 10, 2:30-3:30, room 294 SMSU
- Monday, December 1, 1:30-2:30, room 294 SMSU

[Relevant blog post](#)

Strategic Enrollment Management Planning (SEM) and Performance-Based Budgeting (PBB) for FY 16.

I will host open forums to provide a recap on OAA FY 15 budget, to share information on the FY 16 Strategic Enrollment Management (SEM) and Performance-Based Budgeting (PBB) process and to listen to concerns and questions you might have.

- Monday, October 13, 3:00-4:00, SMSU 296/298
- Repeated on Friday, October 17, 9:00-10:00, SMSU 236

[Relevant blog post](#)

School of Public Health Initiative

Work continues with faculty members and administrators at both PSU and OHSU on planning for a potential joint OHSU/PSU School of Public Health (SPH). Elena Andresen, interim dean of the SPH initiative will host open forums to share information on the planning, to listen to comments and respond to questions.

- Tuesday, October 21 from 2:00-3:00 in SMSU 236
- Thursday, October 30 from 9:00-10:00 in SMSU 236

It is anticipated that later this fall/winter PSU faculty will bring forward to the relevant PSU committees and the Faculty Senate a proposal for consideration for the creation of a joint OHSU/PSU SPH.

AAUP CBA Task Forces

Professor Pam Miller, PSU AAUP President, and I have met to launch the task forces agreed on in the [Collective Bargaining Agreement](#). Membership has been established for the following task forces and meetings are being scheduled:

- A joint task force to examine current employment terms and notice requirements for non-tenure track faculty.
- A joint labor/management committee.
- A joint task force to examine and consider revisions to Article 27 (imposition of progressive sanctions).
- A joint task force to review relevant University policies and practices and identify possible changes to provide greater support and career options for employees balancing family and career.

In addition, AAUP and the University have issued a joint letter asking the Faculty Senate to consider a joint taskforce to examine academic quality at Portland State (on Senate agenda for **Oct 6th** meeting).

Vacant Vice Provost Positions

The Vice Provost for Academic Personnel and Leadership Development was vacated by Carol Mack as of September 26, 2014. An internal search began this summer with an invitation for applications and nominations to faculty by email and hard copy letter to their home addresses. The deadline for applications was October 3rd. Eleven faculty members have applied. A small advisory committee is reviewing the applications and will provide input to me. In the interim, the duties are being handled by me, Patricia Williams, Brian Caufield (an employee of the State-Wide University Shared Services), with the assistance of the Departments of Human Resources and Legal Affairs.

The Vice Provost of Budget, Planning and Internationalization has been temporarily vacated by Kevin Reynold as of July 1 for him to assume the interim VP for Finance and Administration. Kevin continues to serve in his Vice Provost for Internationalization role. In the interim, the budget and planning duties are being handled by me, Susan Klees, with assistance from the Division of Finance and Administration.

[Relevant blog post](#)

RESOLUTION
PSU Faculty Senate
October 6, 2014

Whereas the University and PSU-AAUP agreed* to jointly propose to the Faculty Senate the creation of a joint taskforce to examine academic quality at PSU,

Whereas the Senate voted to adopt [A Holistic Approach to Strategic Institutional Development](#) in support of excellence in teaching and research in April 2011,

Be it resolved that the members of the Portland State University Faculty Senate:

Establish a taskforce to examine academic quality (AQ) at Portland State University with the joint participation of faculty, staff, administrators, and students. Representation should assure the inclusion of faculty who are represented by AAUP and PSUFA (5), of faculty and staff on administrative appointments in academic affairs and finance and administration as well as chairs, directors, and deans (3), and of students as recommended by ASPSU (1).

The AQ Task Force will

- be responsible, with fiscal and administrative support from the University, for the identification and description of PSU's aspirational comparators in keeping with LOA #4
- share a plan of work with the Faculty Senate no later than the January 5, 2015 meeting
- organize one or more open forums for discussion with faculty, staff, and administration that include discussion of comparators with regard to investments in high quality teaching, high quality student support, and high quality research
- present its report to the Senate at the June 2, 2015 meeting, including a plan to assure the continuing review of PSU's aspirational comparators in keeping with the vision and mission of PSU [*corrected to June 1, 2015 meeting.*]

***LETTER OF AGREEMENT—LOA #4: PSU and AAUP Task Force on Academic Quality:** *Collective Bargaining Agreement with Portland State University Chapter, American Association of University Professors and Portland State University, Portland, Oregon. For the Period September 1, 2013 through November 30, 2015 [Revised August 25, 2014]*

Vision: The University and PSU-AAUP are mutually dedicated to the vision of Portland State University as an internationally recognized urban university known for excellence in student learning and retention, path-breaking research and community engagement that contributes to the economic vitality, environmental sustainability and a high quality of life in the Portland metropolitan area and beyond.

The parties agree to jointly propose to the Faculty Senate the creation of a joint taskforce to examine academic quality at Portland State. If the Faculty Senate creates and charges such a taskforce, and requests our participation, the parties agree to participate. Other participants may include ASPSU, PSUFA and any other party determined appropriate by the Faculty Senate.

The University agrees to provide support to fund the identification and description of PSU's aspirational comparators.

Topics to be suggested shall include:

The Elements of High Quality Teaching, including student success, well qualified faculty, student interaction and appropriate class size.

The Components of High Quality Student Support, including advising, financial aid, tutoring, library, and health care, among others, particularly given PSU's access mission.



Office of the Secretary of the Faculty
Suite 650, Market Center Building (MCB)
1600 SW 4th Avenue
Post Office Box 751
Portland, Oregon 97207-0751
<http://www.pdx.edu/faculty-senate>

503-725-4416 tel
fax 503-725-5262

October 8, 2014

To: Provost Andrews

From: Portland State University Faculty Senate
Robert Liebman, Presiding Officer

SUBJ: Notice of Senate Actions

On October 6, 2014 the Senate approved the Curricular Consent Agenda recommending the proposed new undergraduate and graduate courses and program changes listed in Appendix E.1 of the October 2014 Faculty Senate Agenda.

10/10/14—OAA concurs with the approval of the Curricular Consent Agenda.

In addition, Senate voted to recommend the following action:

1. to approve the creation of a Joint Task Force on Academic Quality, published as item E.3 of the October 2014 Agenda, with the correction that the June 2015 Task Force Report date to Faculty Senate is Monday, June 1, 2015.

10/10/14—OAA concurs with the recommendation to create a Joint Task Force on Academic Quality.

Best regards,

A handwritten signature in black ink that reads "Robert Liebman".

Robert Liebman
Presiding Officer of the Senate

A handwritten signature in black ink that reads "Martha W. Hickey".

Martha W. Hickey
Secretary to the Faculty

A handwritten signature in blue ink that reads "Sona Andrews".

Sona Andrews
Provost and Vice President for Academic Affairs

October 9, 2014

TO: Faculty Senate

FROM: David Kinsella
Chair, Graduate Council

RE: Submission of Graduate Council for Faculty Senate

The following proposals have been approved by the Graduate Council, and are recommended for approval by the Faculty Senate.

You may read the full text for any course or program proposal by going to the PSU Curriculum Tracking System at <http://psucurriculumtracker.pbworks.com> and looking in the 2014-15 Comprehensive List of Proposals.

College of Liberal Arts and Sciences

New Program

- Professional Science Master in Environmental Science and Management (two-page summary attached)
FSBC comments: There is a cost in that some additional sections will needed to be offered for this degree. Many of the courses required have unfilled capacity, so only some courses will need an additional section. Additionally, this degree will attract some students from the MEM program, but the lost revenue from a decline in MEM enrollment has been accounted for. The costs of offering additional sections, plus additional library resources, equipment, computers, plus the lost revenue in MEM is less than the expected additional tuition revenue.

SUMMARY:

Department of Environmental Science and Management - June 13, 2014

Proposal for New Academic Program - Professional Science Master (PSM) in Environmental Science and Management

Summary

The Department of Environmental Science and Management (ESM) is proposing the creation of a new master's degree – the Professional Science Master (PSM) in Environmental Science and Management. The PSM degree will build on the successful Master of Environmental Management (MEM) degree which has been offered by the department since 1998. The new degree requires the same depth of scientific and environmental management content and skills of the MEM degree, but

will require 12 additional credits in “PSM Plus Courses.” These PSM “Plus Courses” will give students knowledge in the discipline of professional management and practices. The objective of this proposed degree is to give students the scientific rigor of the traditional master’s degree, knowledge of business practices used in the environmental field and the experience of completing a project with a community partner.

When approved, this program will apply for affiliation with the National Professional Science Master's Association. This organization was formed by the Council of Graduate Schools with support from the Alfred P. Sloan Foundation.

Evidence of Need

Evidence of need of the proposed program comes in part from the success of the current graduate program. There is current demand for the existing MEM and MS programs of approximately 70 students per year. We accommodate an average of 25 students per year (15 MEM students and 10 MS students). This number is limited by faculty capacity to advise graduate students.

In addition, in 2008 the OUS Chancellor's office conducted a survey seeking information about the need for PSM programs from undergraduates majoring in science, technology, engineering, or mathematics (STEM) and alumni holding STEM degrees. Over 500 undergraduate and 290 alumni responded to the survey. Of those respondents who plan to go the graduate school, 73 percent of enrolled students and 67 percent of alumni said they would be likely or very likely to enroll in a master’s program that had a combination of science course work, a few business and communication courses, and an internship.

Nationally, the demand for PSM programs grew as evidenced by the increase in number from 208 in 2010 to 279 in 2012. In addition, the number students applying for admittance grew by 41% from 2010 (4396 applications) to 2012 (6181 applications).

Course of Study, Objectives and Learning Outcomes

The PSM degree curriculum requires students to complete at least 57 credits consisting of: four core ESM graduate courses (physical systems, ecological systems, environmental management and project management); three seminar courses; one course in advanced statistical analysis; three courses in the student's area of concentration; one elective or supporting course; a project and practicum; and at least four PSM “Plus Courses” focused on business and professional management and practices (project management, communication, law/policy, and ethics).

The culminating experience of the students seeking a PSM degree is completion a project. This element of the curriculum serves to integrate coursework, further develop skills required to function effectively in a professional setting (e.g. communication, presentation and project management) and provide an opportunity to participate in the solution of a real environmental problem in a professional

manner. Working with a local agencies or/and organization and an ESM faculty member, the PSM student identifies a problem, formulates a project with the community partner, formally proposes a project, completes the scope of work detailed in the proposal, and documents and presents the results of the project to an appropriate audience.

The expected learning outcomes of the PSM program can be grouped into two categories – 1. knowledge of environmental science and management topics and knowledge of business and professional practices used in the environmental field; and 2. competencies in managing a project in a professional setting.

Specific environmental science and management outcomes include knowledge in physical environmental systems; ecological process; management of environmental systems; environmental project management; advanced quantitative analysis; and depth in area of concentration. Specific business and professional practices outcomes include knowledge in project management; regulations/policies/laws; communications; and professional ethics.

Specific competencies to work in a professional setting include the following: successfully organizing a project; successfully managing a project (personnel/budgets/ logistics); and successfully communicating and interacting with the community partner and other stakeholders.

Cost

The budget was developed with the anticipation of a year-one headcount of five students. Because this degree will make our graduate students more employable, we believe enrollment would steadily increase to a maximum of 15 new graduate students within five years. The budget projects that enrollment will be approximately 67 percent resident students and 33 percent non-resident students. There is no expectation of tuition/ fee remissions or graduate assistantships.

Initial cost of the program (year one) is expected to be approximately \$20,000, mainly for the support of the director of the PSM program through conversion of a 9-month appointment to a 12-month appointment and release time for three 4-credit courses. The director will be the lead advisor for the PSM students. According to the budget, year two will produce a surplus of \$20,000, which will grow in subsequent years to \$107,000 (year five). ESM has secured a commitment from the Institute of Sustainable Solutions to fund the development of the PSM program and year-one costs.