

Portland State University

PDXScholar

Student Research Symposium

Student Research Symposium 2022

May 4th, 11:00 AM - 1:00 PM

Houseless Water Insecurity During COVID-19 Pandemic

Alicia N. Gamble

Follow this and additional works at: <https://pdxscholar.library.pdx.edu/studentsymposium>



Part of the [Environmental Sciences Commons](#)

Let us know how access to this document benefits you.

Gamble, Alicia N., "Houseless Water Insecurity During COVID-19 Pandemic" (2022). *Student Research Symposium*. 19.

<https://pdxscholar.library.pdx.edu/studentsymposium/2022/posters/19>

This Poster is brought to you for free and open access. It has been accepted for inclusion in Student Research Symposium by an authorized administrator of PDXScholar. Please contact us if we can make this document more accessible: pdxscholar@pdx.edu.

Houseless Water Insecurity During COVID-19 Pandemic: Understanding Unhoused Perspectives of Water Sources, Barriers, and Impacts

Alicia Gamble, Mae Soward, Sarah Carvill, PhD, Melissa Haeffner, PhD



PRESENTER:

Alicia Gamble

Master of Environmental Science Candidate
Environmental Science and Management
Portland State University

BACKGROUND

Problem: More information is needed to understand how the houseless population—one of the most vulnerable populations in the nation—has been resilient to water barriers related to the COVID-19 pandemic

Purpose: Understanding houseless individuals' perceptions of public versus grassroots water sources, and the barriers and impacts of these sources during the COVID-19 pandemic

Sources	Barriers	Impacts
<ul style="list-style-type: none"> Public water Private water Bottled water Illegally accessed Surface water Rain water 	<ul style="list-style-type: none"> COVID-19 Health Accessibility Infrastructure Financial Criminalization of houselessness Houselessness stigma Hygiene stigma Fear of "strings attached" 	<ul style="list-style-type: none"> Health Financial Lowered social status Legal Mental deterioration Curtailed job interviews Poor hygiene (body and dental) Food preparation Cleanliness of living space

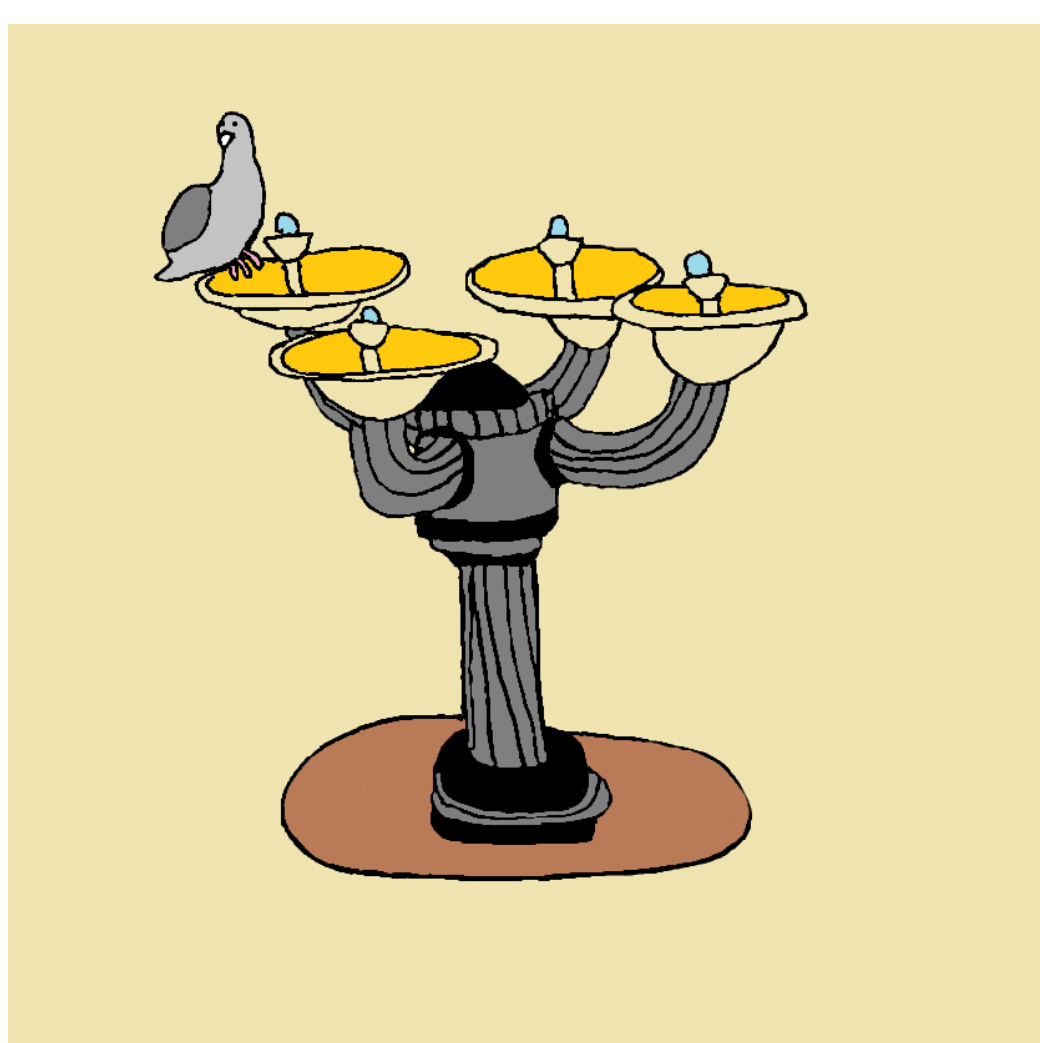
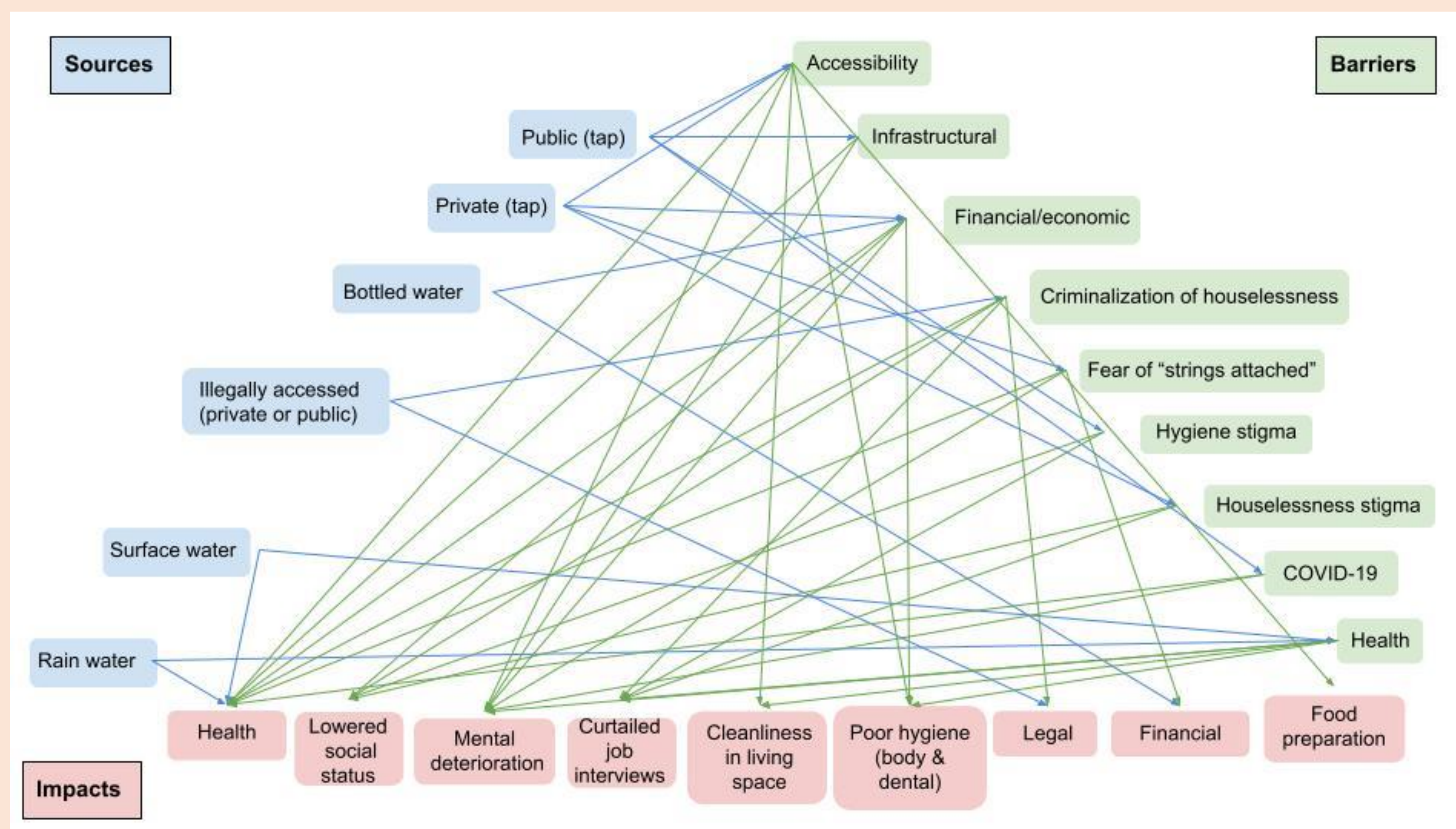


Image Source: Street Roots

In order to find solutions to water insecurity among the unhoused it is crucial to amplify their voices and understand their resilience.



Hypothesis: There are more positive perceptions of grassroots services and there are fewer barriers and impacts with grassroots services

METHODOLOGY

Walking Interviews: walk with unhoused participants around downtown Portland, Oregon and conduct a semi-structured interview about their perceptions of water sources (public and grassroots), barriers and impacts

Data Collected:

- Audio recordings
- GPS data
- Photos

Analysis:

- Audio recordings will be transcribed
- Transcriptions will be coded for emerging themes
- Emerging themes will be cross-checked with participants to ensure accuracy

ANTICIPATED RESULTS

- It is expected that there will be relationships between sources, barriers, and impacts (inter-relationships)
- It is expected that there will be relationships within barriers and impacts (intra-relationships)
 - Example: Legal impacts may also have financial impacts
- It is expected that there will be a difference between the perspectives on public water versus grassroots water sources
- It is expected that there are different barriers and impacts to water sources during the COVID-19 pandemic than before

SISTERS OF THE ROAD

