

Portland State University

PDXScholar

Joint Policy Advisory Committee on
Transportation

Oregon Sustainable Community Digital Library

5-15-2003

Meeting Notes 2003-05-15 [Special Meeting]

Joint Policy Advisory Committee on Transportation

Follow this and additional works at: https://pdxscholar.library.pdx.edu/oscdl_jpact

Let us know how access to this document benefits you.

Recommended Citation

Joint Policy Advisory Committee on Transportation, "Meeting Notes 2003-05-15 [Special Meeting] " (2003). *Joint Policy Advisory Committee on Transportation*. 362.

https://pdxscholar.library.pdx.edu/oscdl_jpact/362

This Minutes is brought to you for free and open access. It has been accepted for inclusion in Joint Policy Advisory Committee on Transportation by an authorized administrator of PDXScholar. Please contact us if we can make this document more accessible: pdxscholar@pdx.edu.

A G E N D A

600 NORTHEAST GRAND AVENUE PORTLAND, OREGON 97232-2736



METRO

TEL 503-797-1916 FAX 503-797-1930

SPECIAL MEETING

MEETING: JOINT POLICY ADVISORY COMMITTEE ON TRANSPORTATION
DATE: Thursday, May 15, 2003
TIME: 7:15 A.M.
PLACE: Council Chambers

7:15	Call to Order and Declaration of a Quorum	Rod Park, Chair
7:20	Citizen communications to JPACT on non-agenda items	Rod Park, Chair
7:25	* Transportation Priorities 2004-07; Narrowing Policy Options and Decision Process (continued from May 8 meeting) – <u>POLICY DISCUSSION</u>	Ted Leybold (Metro)
9:00	ADJOURN	Rod Park, Chair

* Material available electronically. Please call 503-797-1916 for a paper copy

** Not all material on this agenda item is available electronically.

Material provided at meeting.

All material will be available at the meeting.



METRO

Request to Testify at Public Hearing

(Please print legibly)

Date: 5-15-03

Name: Chris Wiberbach

Affiliation: _____

Address: PO Box 1112

Email Address
and/or Fax No:

yamaferm@222.cde

City/State/Zip: Clack, OR 97015

Phone No: _____

Resolution or ordinance number:

funding for Sunnyside rd

Agenda item title or subject of testimony: **

Are you in favor or opposed to the res/ord/report:

In favor

Opposed to

Would you like to be placed on the council/committee meeting
notice list:

Yes

No

**Would you like to be placed on this topic notice list:

Yes

No

PLEASE READ INSTRUCTIONS FOR TESTIFYING ON REVERSE OF CARD

INSTRUCTIONS FOR TESTIFYING BEFORE COUNCIL OR COUNCIL COMMITTEE

Be prepared – Most public testimony is limited to three minutes. Be prepared to summarize your remarks to fit within the time allowed. If you plan to distribute supporting documentation or visual aids, be prepared to provide enough copies to distribute to the council or committee PLUS ONE REQUIRED COPY for the public record.

Sign up to testify – Completely fill out a testimony card, which is found on the reverse of these instructions. At the beginning of the meeting or as soon as possible thereafter, turn your testimony card in to the clerk of the council or council staff member sitting at the dais where the computer is located.

Presenting oral testimony – When called to testify, first submit to the clerk of the council or council staff member stationed by the computer, copies of any supporting documentation you wish to be entered into the record. Do not give documentation directly to councilors because it must first be marked into the record.

Then, move to a testimony table and begin your testimony by stating, “For the record, my name is _____ and my address is _____.” As you make your remarks, address the full Council as “Presiding officer and members of the council.” If you are at a committee meeting, address the Council committee members by stating “Chair (enter last name) and members of the committee.” Be sure to speak clearly and directly into the microphone.

Written testimony – If you are submitting your testimony in writing and you do not plan to make oral comments in addition to what is in writing, do not read your testimony word for word at the hearing. Rather, follow the instructions for submitting written testimony, which are available at the back of the chamber. (Comment cards are available)

Group testimony – Often times, there are many people who share your feelings. Organizing a few main speakers and asking a group to stand who share similar sentiments can make a big statement. Select several people to cover different topics to avoid excessive repetition. Repetitive testimony is generally not as effective as a well planned and coordinated presentation.

Special needs – If you require special accommodation (either ADA assistance or audio visual equipment) in order to testify, please contact council staff (telephone numbers are listed at the bottom of each agenda) at least 24 hours before the meeting with your request.




CITY OF CORNELIUS

MEMORANDUM

Date: May 12, 2003

To: Metro Councilors, MPAC & JPACT Officials

From: M.R. Dick Kline 

Subject: ***Cornelius' MTIP Application: Highway 8 Intersection at 10th Ave.***

This is a bundle of support for our City of Cornelius' single entry for MTIP funding this year – \$797,000 for "modernization" of the Intersection of (TV) Highway 8 and 10th Avenue (Cornelius-Schefflin Road). Here are letters from Cornelius' Mayor and Council, major business and industry, social service community, and city staff appealing for your support of MTIP funding of our project this year. Support letters include:

- City Councilor & Community Development Liaison, Amy Scheckla-Cox
- Mayor Steve Heinrich, May 12, 2003
- Stewart Stiles Truck, Inc.
- Centro Cultural
- Pacific Harvest Supply Co.
- Western Farm Service, Inc.
- Truss Components of Oregon, Inc.
- Ken Leahy Construction, Inc.
- Readiness Letter from Community Development Director
- Safety Report from Fire and Police Chiefs
- Mayor Steve Heinrich, April 14, 2003
- Photos & Graphic from Public Works D

Please know that this (TV) Highway 8 and 10th Avenue (Cornelius-Schefflin) intersection is a gateway to our Main Street District – the hope of our future. It is one of two major intersections of the primary thoroughfare in Cornelius and it is dangerously dysfunctional. In its existing condition, it is a major barrier to business access & investment, safe multi-modal transportation, community unity, plan implementation, and livability. There are no other resources available to help us besides this MTIP grant.

If you have any questions about our proposal, please do not hesitate to call me, Amy Scheckla Cox, our City Council Liaison to MPAC, or Richard Meyer, our Community Development Director at 503-357-9112.

Thank you for your leadership in our region. Thank you for considering our single application for MTIP funding in four years. Our region will be stronger when all of its parts are healthy and working.



CITY OF CORNELIUS

May 12, 2003

Chairman Hughes and MPAC Members
C/o Metro
600 Northeast Grand Avenue
Portland, Oregon 97232

RE: *Cornelius Highway 8 Intersection at 10th Avenue – MTIP*

Dear Mayor Hughes and Local Elected Officials:

With this letter I am writing, my goal is to clarify some details about the only project submitted for MTIP funds by Cornelius. After I read Mr. Bragdon and Mr. Parks' memorandum on "Strategies for Transportation Priorities 2004-07," I thought that a highlight of our Highway 8 / 10th Avenue Intersection project was due. In no description of the three policy implementation options was our \$797,000 project mentioned. However, I knew that under any of the three options, surely our "modernization" Intersection project should stand out.

Our Highway 8 / 10th Avenue Intersection project may be a sleeper in name, yet it is one of two major intersections of the primary thoroughfare in Cornelius – TV Highway. TV Highway is our Main Street beginning at 10th Avenue. It is also our freight route, transit route, commercial hub, and primary route in and out of town. In its existing condition, it is our major barrier to business investment, safe pedestrian access, and community identity, livability & unity. It is the spine on the underfed body of what wants to be a complete and sustainable community.

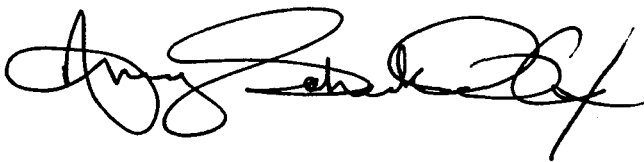
This intersection is so dysfunctional that trucks and long vehicles have to detour through a neighborhood to avoid blocking traffic, buses drive up over curbs to avoid being trapped, cars stack up for blocks dividing the community down the middle, and pedestrians and bicyclists might as well be in a war zone. It is a top priority of our renewed community to fix this central problem. In addition, there are no other resources available to help us besides this MTIP grant.

Our project accomplishes four of the five objectives of the Metro Council for MTIP funds, as I understand them. This intersection reconstruction is one component in a five-part program of Main Street improvements approved when Metro, ODOT and the City accepted our Main Street Plan in 1998. The first element, Adair Boulevard improvements, was granted STIP funding and is being engineered this year. Clearly, this 10th Avenue Intersection project continues Metro's prior commitment to our Main Street program.

Our Main Street District, for which this intersection serves as the gateway, is the center of our implementation of Metro's 2040 Plan. It follows through consistently with Metro land use goals, particularly the priorities on urban walkable, transit-friendly, and mixed-use centers. The project reduces significant barriers to Main Street development as well as existing and projected industrial businesses along the 10th Avenue freight route. It is located at a juncture that a recent OECD funded market study confirms is positioned to effect the greatest economic development and jobs of anywhere in the area. Finally, this project is critical to leveraging additional public funding, private investment and construction of the rest of our Main Street District, which is Cornelius' top capital, operational and political priority.

I thank you for your patience and support of this brand new face at MPAC meetings. In addition, thank you for your support of the complete community that Cornelius wants to be. Our region will be stronger when all of its parts are healthy and working.

Your partner in community development,

A handwritten signature in black ink, appearing to read 'Amy Scheckla-Cox', written in a cursive style.

Amy Scheckla-Cox
Cornelius City Councilor
Liaison for Community Development



CITY OF CORNELIUS

May 12, 2003

Mayors Rob Drake, Tom Hughes and Elected Officials
C/o Metro
600 Northeast Grand Avenue
Portland, Oregon 97232

RE: *Cornelius' Need for Highway 8 Intersection at 10th Avenue*

Dear Rob, Tom and Local Elected Officials:

I wanted to add this personal note to my letter to JPACT dated April 14 about Cornelius' only application this year for MTIP funds. I need you to help our small community get heard in the roar of so many bigger projects from bigger cities. It is hard competing for limited funds when other improvement projects have more traffic and more sound businesses close by.

Reconstructing the 10th Avenue / TV Highway intersection in Cornelius is absolutely vital to the safety and economic survival of our community. This intersection has been a mess for years. And now that everyone is on board with our Main Street Plan, its reconstruction is all the more important. I have heard from owners of major companies both in and outside town about the barrier this intersection is to their business. Stewart Stiles Trucking, Northwest Environmental, Oregon Hazelnut Growers Association, Pacific Harvest and Western Farm Service to name a few.

Here's the problem these companies face. When a truck turns at this intersection and an opposing lane is full, everything stops and the opposing traffic backs up further. To avoid this intersection, all semi-trailer trucks turn into a neighborhood crowded with children and day laborers, causing great potential for accidents. The congestion discourages pedestrian oriented businesses we want in this Main Street area.

I want you to know that we have a new City Council and City Manager, a strong staff and supportive community all who are taking a positive and cooperative approach to building Cornelius into a healthy, sustainable neighbor here in Washington County. But, if we are going to turn this town around, we need some outside help making key public improvements in the center of town. We have been applying for funds to fix this 10th Avenue / Highway 8 intersection sense the '90s as part of our Main Street District Plan. We need this tough funding decision to break our way.

Thank you for your leadership in Washington County and our region. Thank you for your personal support of me and our new Councilors now involved in County and Metro committees. And thank you for your support of the complete community that Cornelius wants to be. Our region will be stronger when all of its parts are healthy and working.

Your partner in good government,

Steve Heinrich,
Mayor of the City of Cornelius



Stewart Stiles

Truck Line, Inc.



Home of!
Packin' Rap

Phone: (503) 357-823
1-800-248-823

495 N. Holladay
Cornelius, Oregon 97113
FAX: (503) 359-8493

May 12th 2003

Joint Policy Advisory Committee on Transportation
Metro
600 Northeast Grand Avenue
Portland, Oregon 97232

RE; Importance of MTIP Project in Cornelius:
Modernization of Highway 8 Intersection at 10th Avenue

Dear JPACT Members:

Stewart-Stiles Truck Line Inc. is an Oregon family owned local trucking and warehousing business based in Cornelius Oregon. Our business is to provide full load and less than full load pick up and delivery of goods to businesses and homes in the greater Portland area. Our specialty is same day service from North to Longview Washington to Eugene Oregon including the North Oregon Coast. By combining shipments from many customers to different areas we help reduce the numbers of vehicles on the road.

The project would remove a significant barrier to our business operation and other existing and potential industrial investment in land connected through the intersection. It would provide a more efficient performing intersection where truck traffic, auto, bus and pedestrians all concentrate.



Stewart Stiles

495 N. Holladay
Cornelius, Oregon 97113
FAX: (503) 359-8493

Truck Line, Inc.



Home of Parcell
Packin' Paper
Phone: (503) 357-8238
1-800-248-8238

Currently, trucks and large vehicles have to detour through a residential neighborhood north of Highway 8 to avoid this intersection. The current detour is not only **poorly designed**, but is a *major safety concern*.

Looking forward we know that we need to be prepared for the next growth in the area, a major way of doing this is to improve this intersection. By improving this intersection it would improve the flow of freight between our facility and the high-tech cluster. The improvement of traffic flow will positively affect the future of the industrial base and quality of life in Western Washington County.

Please support the reconstruction of the intersection of Highway 8 and 10th Avenue in Cornelius.

A handwritten signature in cursive script that reads "Joe Darby".

Joe Darby



CITY OF CORNELIUS

April 14, 2003

Joint Policy Advisory Committee on Transportation (JPACT)
Metro
600 Northeast Grand Avenue
Portland, Oregon 97232

**RE: *Importance of MTIP Project in Cornelius:
Highway 8 Intersection at 10th Avenue (Main Street Gateway)***

Dear JPACT Members:

We wanted you to know how important this MTIP Modernization Project is to our community and by implication to the region. The modernization/reconstruction of the 10th Avenue intersection with TV Highway in Cornelius is our single entry in this year's regional competition for MTIP grant funds. It is not only vital for safety and efficient traffic movement, but also for the economic development we have begun in the poorest, most economically depressed city in the region.

The double intersection of 10th Avenue across the Adair/Baseline couplet is one of two most important intersections in Cornelius. 10th Avenue, as it extends north as Cornelius-Schefflin Road toward Sunset Highway and south as Golf Course Road to Highway 219, is a Washington County Arterial and Freight Route in the County Transportation Systems Plan and subject of significant public investment consistent with the Regional Transportation Plan both north and south of the intersection.

Reconstruction of this intersection has been a lynch-pin in Cornelius' economic development, land use, livability and transportation plans and strategies for at least half a dozen years. This intersection is key to two main employment/economic centers in Cornelius – our primary industrial area and central business district. Unimproved, it is a barrier to the main flow of commerce in Cornelius.

Currently, trucks and large vehicles have to detour through a residential neighborhood north of Highway 8 to avoid this intersection. 10th Avenue is a county north/south freight route serving nurseries and other agricultural industry in western Washington County and connecting trucking/warehousing industry like Stewart Stiles to the County's high-tech cluster. Improvements are now being constructed north of Cornelius to Zion Church Road and on to Sunset Highway and are scheduled for connection south to Highway 219 south of Hillsboro. Moreover, local and regional plans call for increased freight traffic to connect the local, regional and state economy. Cornelius' plans for further development of its industrial base, which are so vital to balancing jobs & housing and adding to our local tax base, requires increasing use of this thoroughfare to the Sunset Hwy.

It is also the west gateway to Cornelius' Main Street District, a 2040 Plan center. This is the highest priority area for economic development in the region's most economically distressed city. Business, pedestrian and transit access and amenities currently are poor, confused, substandard and unsafe around this crossroads and most of the way along the core Retail Sub-

district due to traffic back-ups. The intersection cannot handle even existing traffic safely, much less the multi-modal transportation called for in our 2040-consistent Main Street and Transportation System Plan.

The fact that Cornelius' Main Street is also a state highway requires special coordinated efforts to marry the mixed, pedestrian-oriented business district objectives of our city with the efficient through-traffic objectives of the state. Those plans have been completed, unanimous support won, and public/private investments leveraged to begin successfully building the center of Cornelius' business district. Reconstruction of this intersection will allow for safe vehicular traffic through town as well as effective local access to and from our Main Street retail center and mixed-use area. Only with this project will pedestrians, bicyclists and transit riders have clear and safe access to Main Street. Our plan for shared parking also depends upon the safe vehicle routing, access and pedestrian crossings this project provides.

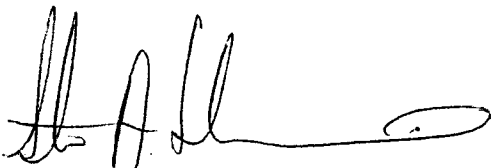
This project leverages both public and private development that builds out the Main Street Plan. It is a public investment assumed in the 2002 Cornelius Retail Analysis & Business Development Program funded by OECDD. It completes the west end of the STIP funded Main Street Adair Boulevard project and sets the stage for the Baseline Boulevard element. It will relieve the stacking and crossing problems at the sites of our new Chamber of Commerce' Visitors Center, Centro Cultural Center, Virginia Garcia Health Clinic, and some sixty businesses projected for the immediate area. Recent and current industrial developments are depending on reconstructing this intersection and have paid for related improvements along 10th Avenue. More are planned.

In short, the 10th Avenue Intersection Reconstruction project is absolutely vital for the success of our city's most important economic and land development effort this decade.

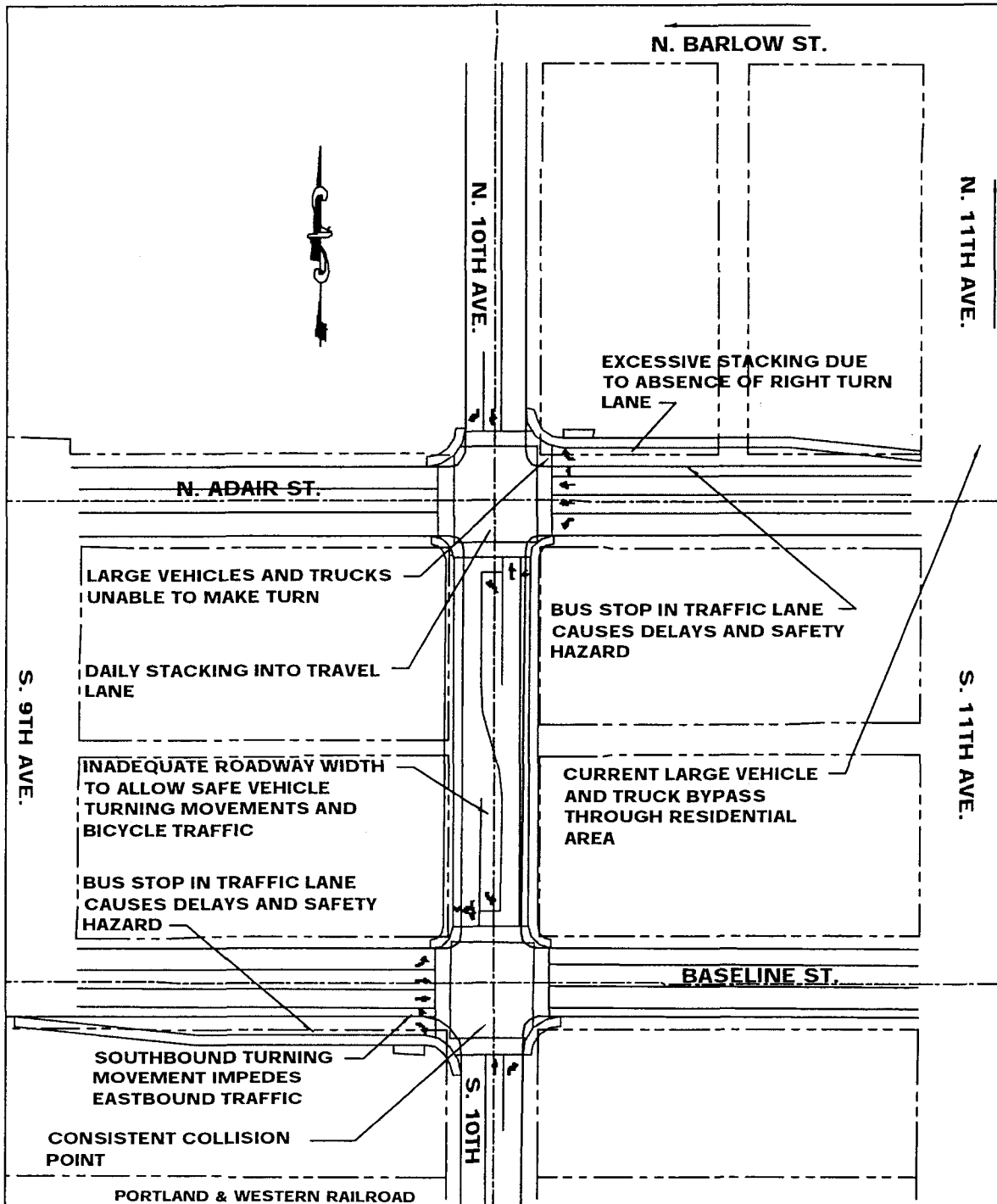
Cornelius' single project appears to be in the running for a "modernization" grant during the period 2004-07. We are ready to complete this project in conjunction with Main Street improvement of Adair in 2004-5. Our hope is that with this show of community commitment, JPACT and Metro will decide to fund the Highway 8 Intersection at 10th Avenue in this round of the MTIP.

Thank you all for your ongoing work for the region and for hearing the comparatively small voice of our community. Our region will be stronger when all of its parts are similarly healthy and working.

Your partner in safe, sustainable community development,

A handwritten signature in black ink, appearing to read 'S. Heinrich', with a long horizontal flourish extending to the right.

Steve Heinrich,
Mayor of the City of Cornelius



SOLUTION ELEMENTS:

INCREASE RADIUS AT
SOUTHEAST CORNER OF
BASELINE AND 10TH

INCREASE RADIUS AT
NORTHWEST CORNER OF
ADAIR AND 10TH
ADD BICYCLE LANES

OFF HIGHWAY BUS STOP
AT ADAIR AND 10TH

OFF HIGHWAY BUS STOP
AT BASELINE AND 10TH

WIDEN 10TH IN COUPLET
BETWEEN ADAIR AND
BASELINE

RIGHT TURN LANE ON
ADAIR WESTBOUND AT
10TH

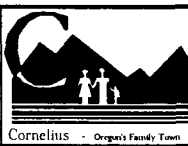
RIGHT TURN LANE ON
BASELINE EASTBOUND AT
10TH

NEW SIGNALIZATION

ADD BICYCLE LANES

SHEET	
1	
OF	
1	

CITY OF CORNELIUS PUBLIC WORKS
1300 S. KODIAK CIRCLE
CORNELIUS, OR 97113 (503)357-3011
Robert A. Dixon, P.E.
Public Works Director / City Engineer



DESIGNED BY: RPH
DRAWN BY: RPH
CHECKED BY: RAD
ISSUE DATE: 2/26/04

**10TH AVENUE INTERSECTION
IMPROVEMENTS**

**EXISTING PROBLEMS /
PROPOSED SOLUTIONS EXHIBIT**



CITY OF CORNELIUS

May 12, 2003

Joint Policy Advisory Committee on Transportation (JPACT)
c/o Metro
600 Northeast Grand Avenue
Portland, Oregon 97232

RE: Safety at Cornelius' Highway 8 Intersection at 10th Avenue (MTIP Project)

Dear Metro Councilors and Local Representatives:

This letter is to confirm the importance of reconstructing the intersection of TV Highway and 10th Avenue – from a safety point of view. This intersection is the most congested intersection in or around the City of Cornelius. I understand that the congestion is caused primarily by an inadequate turning radius, poor sidewalk, pedestrian crossing and transit improvements, antiquated traffic signals and poor drainage & curb function.

The existing condition of this intersection was most probably a contributing factor in a dozen reported accidents in 2002 and five so far this year. These incidents include:

2002

Alarm #0200121 10 Ave x Dogwood St.
0200167 S 12 Ave
0200199 14 Ave x Adair St.
0200283 S 10 Ave
0200297 601 Baseline St.
0200304 990 N Adair St.
0200409 10 Ave x Baseline
0200483 10 Ave x Adair
0200639 12 Ave x Baseline
0200651 10 Ave x Baseline
0200927 4 Ave x Baseline
0201018 1519 Adair St.


2003

Alarm #0300062 14 Ave x Adair
0300109 Baseline x 4 Ave.
0300229 13 Ave x Adair St.
0300230 10 Ave x Alpine
0300230 1021 Baseline

Reconstruction of this major intersection will reduce barriers to cross town, through town and Main Street business foot and vehicle traffic. This project will also save the City and County significant emergency service resources that are already taxed beyond reason.

Thank you for considering this City of Cornelius project for MTIP funding.

Sincerely,


Chris Asanovic
Fire Chief

Paul Rubenstein
Chief of Police



CITY OF CORNELIUS

February 20, 2003

Terry Whisler
Senior Transportation Planner
Metro
600 Northeast Grand Avenue
Portland, Oregon 97232

RE: Readiness Letter (To be attached to Cornelius MTIP Grant Application)

Dear Mr. Whisler:

This letter addresses the readiness of the City of Cornelius to complete the transportation project for which it has submitted an MTIP application for funding this winter. It is in response to your suggestion that we inform those responsible for review and ranking this round of projects about Cornelius' progress on our last project funded – Priority 2000 MTIP grant of \$1.8 million for Adair Boulevard Improvements, as well as our readiness for additional grants.

Cornelius completed its Main Street (Boulevard) Plan in 1998, with the co-sponsorship of Metro, ODOT, DLCD and local organizations, consistent with and in response to 2040 Growth Management goal and state guidelines for transportation improvement and economic development. Key "regionally important" transportation improvements called for to implement this Plan included boulevard improvements to ten central blocks of Adair and Baseline (TV Highway couplet) and intersection reconstruction of three intersections of arterials that define the District, 10th Avenue, 14th Avenue and 19th/20th across the highway couplet.

In 1999, funding under MSTIP "Priorities 2000" was approved for one element of these Main Street improvements – \$1.8 m for Adair Boulevard Improvements. After the award, ODOT, co-applicant with Cornelius for this funding, backed out of a commitment to match the grant with engineering because of unexpected fiscal constraints, and it took two years for Cornelius to find local resources to match the grant. We obtained permission from Washington County in August of 2001 to use TIF for our local match.

That fall, Cornelius proceeded to meet with ODOT and Metro planners and STIP staff to prepare for engineering and construction of this project and contracted with OTAC for initial drawings, updated cost-estimates and help with drafting the ODOT Prospectus required before Engineering. Much of 2002 was spent on vital related preparatory tasks:

- Finishing a 10-block LID funded Adair Street improvement project just east of the Main Street District,
- Completing an extensive community process of revising our Main Street Plan to gain full community support that had been lacking for the 1998 Plan and its projects,
- Resurrecting the Cornelius Chamber of Commerce & completing an OECD funding Business Marketing Study for Main Street,
- Tapping an OECD grant & loan funds to study the feasibility of constructing a Community Center on Main Street,



CENTRO CULTURAL *of Washington County*

1110 N. Adair / P.O. Box 708 • Cornelius, OR 97113 • Phone: (503) 359-0446 • Fax: (503) 357-0183 • Email: info@centrocultural.org

May 13, 2003

Joint Policy Advisory Committee on Transportation (JPACT)
Metro
600 NE Grand Avenue
Portland, OR 97232

re: Importance of MTIP Project in Cornelius: Highway 8 Intersection at 10th Avenue

Dear JPACT Members:

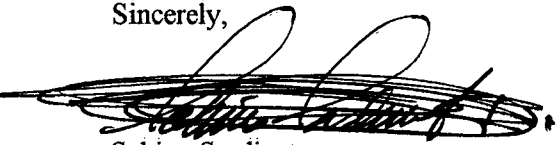
Centro Cultural is a leading non-profit in Washington County. For over thirty years, we have served the Hispanic population with services, including English classes, job training, computer instruction, drivers' training, information and referral, and a community kitchen. We put on region-wide events and cultural activities. 20,000 people a year attend programs and events sponsored by Centro.

Our offices are located at the center of the Cornelius Main Street District, an area planned for a mix of commercial, service, and residential use, consistent with state, regional and local plans for concentrated pedestrian-oriented urban redevelopment. Many businesses and organizations, like ours, have invested time and energy in planning to get our Main Street plans off the ground.

Unfortunately, our two main intersections are big problems. The one at 10th Avenue and TV Highway needs reconstruction. It is unsafe for the pedestrians, cars, trucks, and buses that use it. Trucks often travel through neighborhoods to avoid this intersection because the corners are tight and there are no turn lanes. Trucks and cars often back up solid for many blocks at the light, making it difficult and dangerous for people to get to and from our services. Reconstruction of this intersection is vital for the safety of this community. It provides traffic movement and the development of our city as Metro, ODOT, and our citizens have wanted for five years.

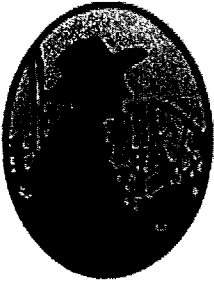
Cornelius is not a rich city. We don't have the resources to make a grand case for our only application for transportation funds, but this relatively small regional need is a huge need for us. It is part of a plan to build a busy, friendly, safe boulevard that ties the center of Cornelius and its people together. A healthy community in Cornelius is an asset for the region as a whole. The services of our organization, along with the support of public investments such as this, make Cornelius a good, sustainable place and a credit to our area. Thank you for listening to the voice of our community. The region is stronger when all its parts are healthy and working.

Sincerely,


Sabino Sardineta
Executive Director



Community Impact Partner
The New United Way



PACIFIC HARVEST SUPPLY CO.

May 12, 2003

Dear JPACT Members,

Pacific Harvest Supply Company is an agricultural business located on the corner of N. 10th and Holladay.

Our customers and supplies come and go in large trucks due to our business being primarily wholesale.

The proposed project at the intersection of 10th Ave. and T.V. Hwy **would remove a significant barrier to our customers by making a more efficient intersection where there is a large concentration of pedestrians and large vehicle traffic.**

Because I have lived and/or worked in Cornelius all my life I have seen a number of serious and many minor accidents at this intersection which is a major concern.

Please help Cornelius to be a safer place to live and do business.

Thank You,

Jeff Duyck

Pacific Harvest Supply Co.

303 N. Holladay St.

Box 309

Cornelius, OR 97113

Phone 503-359-4289

Fax 503-359-3582

Web: www.pacificharvest.com

574 N. 7th Court
Cornelius, OR 97113
P.O. Box 544
Hillsboro, OR 97123



(503) 640-2371
(503) 357-1223
(800) 669-5089
Fax: (503) 640-5973

WESTERN FARM SERVICE, INC.

May 13, 2003

Joint Policy Advisory Committee on Transportation (JPACT)
Metro
600 Northeast Grand Avenue
Portland, Or. 97232

Re: Importance of MTIP Project in Cornelius
Modernization of Highway 8 Intersection at 10th Avenue

Dear JPACT Members

Western Farm Service is a retail, wholesale distributor of agricultural products operating out of Cornelius. We cater to the local farmer supplying his chemical and plant nutrient needs, along with supplying the horticultural market with all of their needs including hard goods which consist of plastics, pots, trays, and planting medium. Western Farm Service currently employs 23 full time employees and a number of part time and seasonal individuals.

As Western Farm Service continues to grow and provide jobs to the area it is vitally important that we have easy access to our facility, both by our vehicles and by common carriers that are used to deliver product to and from our facility. **This project would remove a significant barrier to our business operation and other existing and potential industrial investment in land connected through this intersection. It would provide a more efficient performing intersection where truck traffic, auto, bus, and pedestrians are all concentrated.**

Currently our trucks along with other trucks and large vehicles have to detour through a residential neighborhood north of this highway 8 intersection. They have to make several 90 degree turns through these neighborhoods endangering pedestrians, children and other vehicle traffic. This is only going to get worse as more local and regional traffic is brought into the area by the improvements made north of Cornelius on Zion Church Road, and on the Sunset Highway with the connection being made to Highway 219 south of Hillsboro.

Please consider this in your decision making as you make future plans for our highway systems.

Thank you

A handwritten signature in black ink, appearing to read "Ken Wessels", written over a horizontal line.

Ken Wessels
Manager

Mailing address
P.O. Box 468
Cornelius, Oregon 97113

TRUSS
COMPONENTS
ENGINEERED TRUSS SYSTEMS of Oregon, Inc.
ROOF & FLOOR

Street address
825 North 4th Avenue
Cornelius, Oregon

Phone: (503) 357-2118 • 1-800-446-4430 • Fax: (503) 359-5242

May 13, 2003

Joint Policy Committee on Transportation
Metro
600 Northeast Grand Avenue
Portland, OR 972332

RE: ***MTIP Project in Cornelius:
Modernization of Highway 8 Intersection at 10th Avenue***

Dear JPACT Members:


Truss Components of Oregon, Inc resides at 825 N 4th Avenue in Cornelius, Oregon. We manufacture roof and floor trusses for both residential and commercial construction in Oregon and Southern Washington. We have been at this location for the last 19 years. We currently have 35 people in our organization.

The project would remove a significant barrier to our business operation and other existing and potential industrial investment in land connected through this intersection. It would provide a more efficient performing intersection where truck traffic, auto, bus and pedestrians all concentrate.

The intersection of 10th Avenue across the Adair/Baseline couplet is a very important intersection to this area. It is the gateway from our location to both TV Hwy and the Sunset Hwy. The intersections reach also extends from Golf Course Rd. to Hwy 219. Our delivery vehicles use these routes frequently. It can be extremely difficult to maneuver these intersections. This is especially true since approximately half of our deliveries are wide or oversized loads.

Currently, large vehicles have to detour through a residential neighborhood north of highway 8 to avoid this intersection. There are many nurseries; industrial, agricultural and manufacturing firms who use these routes. It would be beneficial to all these firms, as well as our community and the growth there of to have improvements made to the highway 8 intersection at 10th Avenue.

Sincerely,



Fred Prosser, President
Truss Components of Oregon, Inc.



Construction, Inc.

P.O. Box 489 • 915 S 12th Ave • Cornelius, Oregon 97113 • (503) 357-2193 • FAX (503) 357-3649

May 13, 2003

Joint Policy Advisory Committee on Transportation (JPACT)
Metro
600 Northeast Grand Avenue
Portland, Oregon 97232

**RE: Importance of MTIP Project in Cornelius:
Modernization of Highway 8 Intersection at 10th Ave.**

Dear JPACT Members:

Ken Leahy Construction, Inc. is a diversified construction company involved in, earthwork, underground utilities, street improvement, soil amending, site development and golf course construction.

We have several pieces of large, heavy equipment that are hauled daily in and out of our yard on 12th avenue in the City of Cornelius. It is very important to us that we have safe and efficient routes of transportation on the city streets as well as safe mobility in and thru the city's intersections.

The project would remove a significant barrier to our business operation and other existing and potential industrial investment in land connected through this intersection. It would provide a more efficient performing intersection where truck traffic, auto, bus and pedestrians all concentrated.

Our hope is that you will not over look our entry for the reconstruction of the 10th avenue intersection with TV Highway in this year's regional competition for MTIP grant funds. The goal of all concerned residents and business owners alike should be to provide the city with the safest streets and intersections possible.

Sincerely,

A handwritten signature in black ink, appearing to read "Ken Leahy". The signature is fluid and cursive, written over the typed name and title.

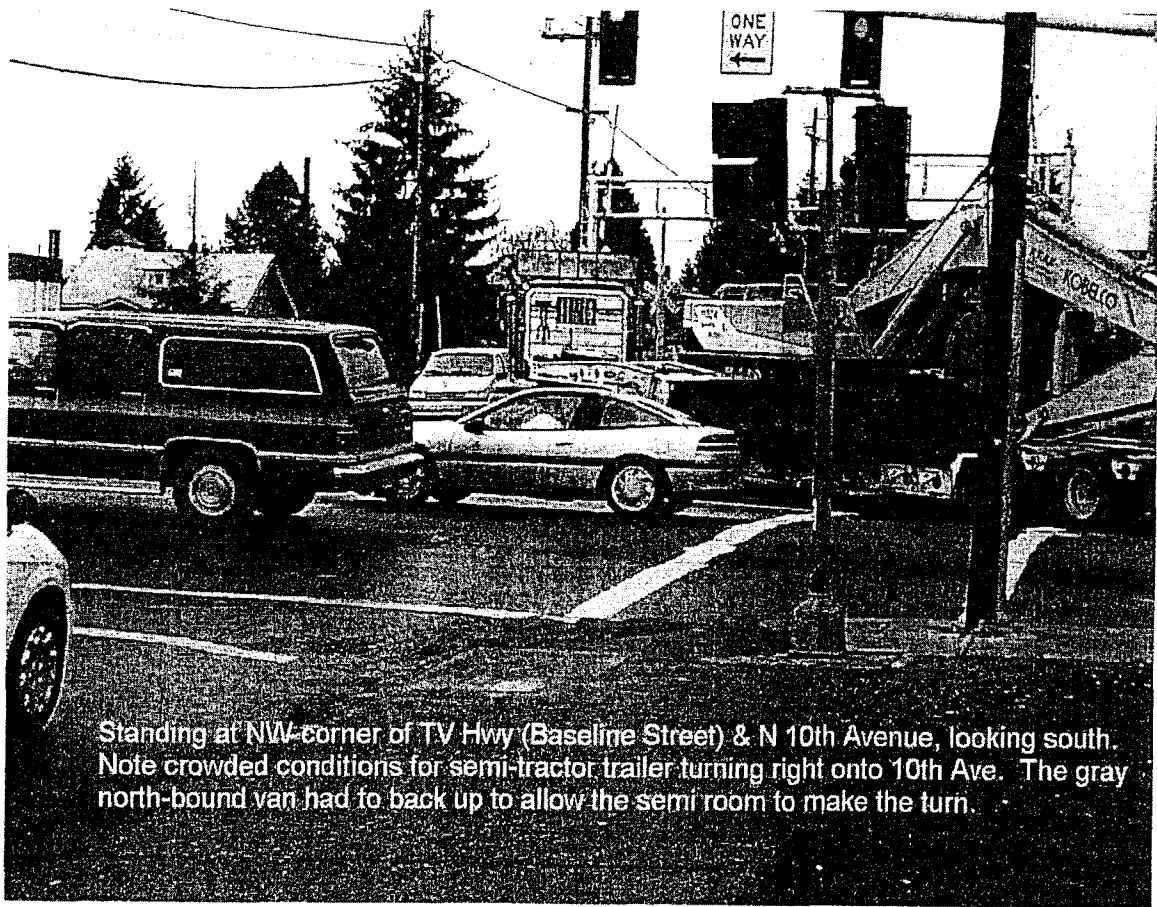
Ken Leahy,
President/Owner



Standing at NE corner of TV Hwy (N Adair Street) & N 10th Avenue, looking south. Note traffic stacking from signal at Baseline Street, which sometimes results in partial blockage of N Adair Street's left travel lane.



Standing at NE corner of TV Hwy (N Adair Street) & N 10th Avenue, looking north at curb and planter strip on west side of N Adair Street. Note puddling in planter strip, showing that system is not fully functional. This is a common problem on N Adair onto N 10th without turning onto N 10th. See photo of planter strip.



Standing at NW-corner of TV Hwy (Baseline Street) & N 10th Avenue, looking south. Note crowded conditions for semi-tractor trailer turning right onto 10th Ave. The gray north-bound van had to back up to allow the semi room to make the turn.



JPACT Members and Alternates

	COURTESY_TITL	FIRST_NAMI	MIDDLE_NAMI	LAST_NAME	ORGANIZATION	REPRESENTING	ADDRESS	E	SUITE CITY	STATE	ZIPCODE
1	The Honorable	Rod		Park	Metro	Chair	600 NE Grand Ave.		Portland	OR	97232-2736
2	The Honorable	Rex		Burkholder	Metro	Vice-Chair	600 NE Grand Ave.		Portland	OR	97232-2736
3	The Honorable	Carl		Hosticka	Metro	Metro	600 NE Grand Ave.		Portland	OR	97232-2736
	The Honorable	Rod		Monroe	Metro	Metro	600 NE Grand Ave.		Portland	OR	97232-2736
4	The Honorable	Bill		Kennemer	Clackamas County	Clackamas County	907 Main St.		Oregon City	OR	97045-1882
5	The Honorable	Maria		Rojo de Steffey	Multnomah County	Multnomah County	501 SE Hawthorne Blvd. Room		Portland	OR	97214-3585
	The Honorable	Lonnie		Roberts	Multnomah County	Multnomah County	501 SE Hawthorne Blvd. Room		600 Portland	OR	97214-3585
7	The Honorable	Roy		Rogers	Washington County	Washington County	12700 SW 72ND Ave.		Portland	OR	97223-8335
	The Honorable	Tom		Brian	Washington County	Washington County	155 N. 1st Ave.	MS	22 Hillsboro	OR	97124-3001
8	The Honorable	Jim		Francesconi	City of Portland	City of Portland	1221 SW 4th Ave.	Room	220 Portland	OR	97204-1906
	The Honorable	Vera		Katz	City of Portland	City of Portland	1221 SW 4th Ave.	Room	340 Portland	OR	97204-1907
9	The Honorable	Karl		Rohde	Oswego	Cities of Clackamas County	PO Box 227		Oswego	OR	97034-0369
	The Honorable	James		Bernard	City of Milwaukie	Cities of Clackamas County	2036 SE Washington St.		Milwaukie	OR	97222-7606
10	The Honorable	Larry		Haverkamp	City of Gresham	Cities of Multnomah County	1333 NW Eastman Pkwy.		Gresham	OR	97030-3825
	The Honorable	James	W	Kight	City of Troutdale	Cities of Multnomah County	950 Jackson Park Rd.		Troutdale	OR	97060-2114
10.	The Honorable	Robert		Drake	City of Beaverton	Cities of Washington County	PO Box 4755		Beaverton	OR	97076-4755
	The Honorable	Lou		Ogden	City of Tualatin	Cities of Washington County	21040 SW 90TH Ave.		Tualatin	OR	97062-9346
11.	Mr.	Fred		Hansen	Tri-Met	Tri-Met	4012 SE 17th Ave.		Portland	OR	97202
	Mr.	Neil		McFarlane	Tri-Met	Tri-Met	710 NE Holladay St.		Portland	OR	97232
12.	Ms.	Kay		Van Sickle	ODOT	ODOT	123 NW Flanders St.		Portland	OR	97209-4037
	Mr.	Bruce		Warner	ODOT	ODOT	355 Capitol St., NE	Room	135 Salem	OR	97301-3871
13.	Ms.	Stephanie		Hallock	DEQ	Oregon DEQ	811 SW 6TH Ave.		Portland	OR	97204
	Mr.	Paul		Slyman	DEQ	Oregon DEQ	811 SW 6TH Ave.		Portland	OR	97204
	Mr.	Andy		Ginsburg	DEQ	Oregon DEQ	811 SW 6th Ave.	Floor	11 Portland	OR	97204
	Ms.	Annette		Liebe	DEQ	Oregon DEQ	811 SW 6th Ave.		Portland	OR	97204-1390
14.	Mr.	Don		Wagner	WSDOT	Washington State DOT	PO Box 1709		Vancouver	WA	98668
	Ms.	Mary		Legry	WSDOT	Washington State DOT	PO Box 1709		Vancouver	WA	98668
15.	Mr.	Bill		Wyatt	Port of Portland	Port of Portland	PO Box 3529		Portland	OR	97208
	Ms.	Susie		Lahsene	Port of Portland	Port of Portland	PO Box 3529		Portland	OR	97208
16.	The Honorable	Royce	E	Pollard	City of Vancouver	City of Vancouver	PO Box 1995		Vancouver	WA	98668
	Mr.	Dean		Lookingbill	SW Washington RTC	SW Washington RTC	1351 Officers Row		Vancouver	WA	98661
17.	The Honorable	Craig		Pridemore	Clark County	Clark County	PO Box 5000		Vancouver	WA	98666-5000
	Mr.	Peter		Capell	Clark County	Clark County	PO Box 9810		Vancouver	WA	98666-9810

COMMITTEE TITLE JPACT SPECIAL MEETING

DATE May 15, 2003

NAME	AFFILIATION
Rod Park	Metro Council
BOB DRAKE	CITIES OF WASHINGTON CO.
FRED HANSEN	TRIMET
Susie Lebeane	Part of Pallas
Carl Hosticka	Metro Council
Marie Kojak & Family	Multco
Bar Kondoruk	COLUMBUS Co
Larry Navarney	Mult Co Cities
Don Wagner	WS DOT
Andy Gansberg	DEQ
Kay Van Sickle	ODOT
KARL RONDE	C ³
Roy Burkholder	Metro.
BRANT WILLIAMS	CITY OF PORTLAND
Roy Rogers	Washington County
Albion	Metro
Phil Schirp	
Olivia Clark	TriMet
Dick Freeman	
Neil McFarlane	

COMMITTEE TITLE JPACT SPECIAL MEETING

DATE May 15, 2003

NAME

AFFILIATION

Kim Ellis

Metro

Joe Leybold

"

ANTHONY BLACK

Cornelius city council

Brian Newman

Metro

Ed Ahlstrom

Multnomah County

John Hill

Clackamas County

BOB COCHRAN

FAIRVIEW

Ron Papsdorf

City of Gresham

Beth Park

Tualatin Hills Park & Rec District

Nancy Kraustner

City of Oregon City

Shoeless Joe Jackson

Metro

Janice Cowan

City of Wilsonville

Dora Whitfield Beaman

Metro

David Beagdon

Metro