

Oregon Population Forecast Program

Regional Forecast Meeting - September 22, 2014

Presentation by

Population Forecast Program Team

DOUGLAS COUNTY

Oregon Population Forecast Program Project Team

Xiaomin Ruan,

Population Forecast Program Coordinator

Risa S. Proehl,

Population Estimates Program Manager

Jason R. Jurjevich,

Assistant Director Population Research Center

Kevin Rancik,

GIS Analyst

Janai Kessi,

Research Analyst

Marisol Caceres Lorenzo,

Research Assistant

Carson Gorecki,

Research Assistant

Agenda

- Population Research Center (PRC)
- Forecast Program overview
 - Forecast regions
 - Schedule
 - Deliverables
 - Forecasting methods and data sources
 - Process for local input
- Demographic and economic trends

PRC Research areas:

- **Oregon Population Forecast Program**
- Oregon Population Estimates Program
- Oregon State Data Center (SDC)
- Demographic Research and Advisory Services
- Applied Demography Instruction



Forecast Program Overview

PRC Website:

<http://www.pdx.edu/prc>

Click here for —————→
more information on OPFP

PRC Statewide Programs

- Oregon Census State Data Center
- Annual Population Estimates
- Oregon Population Forecast Program

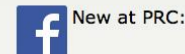
POPULATION RESEARCH CENTER



The Population Research Center (PRC) is an interdisciplinary public service, research, and training unit for population-related data and research for the State of Oregon. The mission of PRC is to provide population data, information, and research analysis for Oregon and its communities. Center staff engage in a variety of demographic activities, including the Oregon State Data Center, the Oregon Population Estimates Program, and a variety of commissioned population projects. PRC staff also teach in the Nohad A. Toulan School of Urban Studies and Planning, supporting a graduate concentration in applied demography and a graduate certificate program in applied demography.



POPULATION RESEARCH
CENTER



New at PRC:

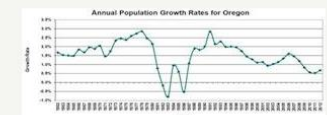
Estimates questionnaire goes online:

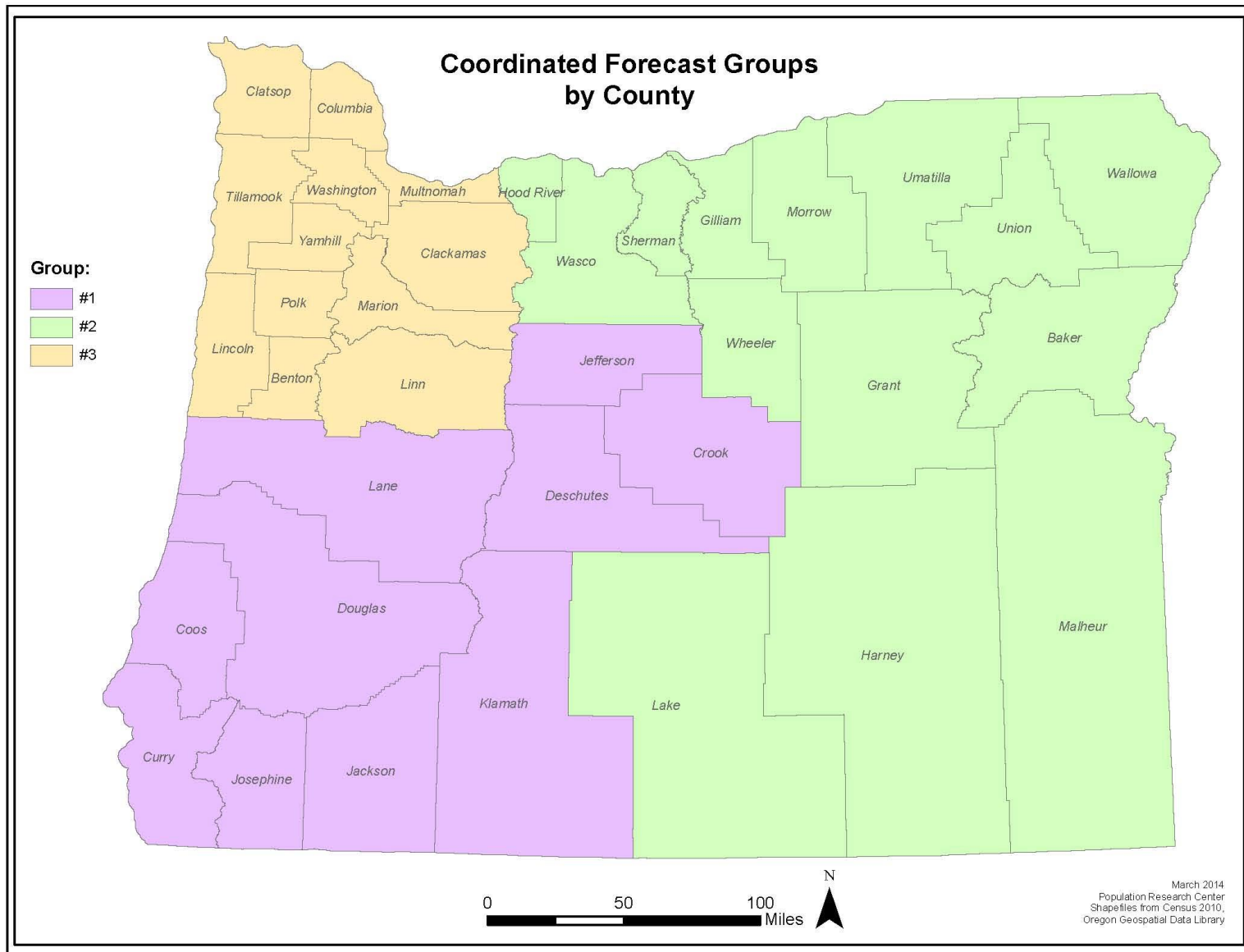
We are converting to an electronic process of data collection beginning in summer of 2013.

The link to the web-based annual questionnaire will be emailed to the contact person we have on file from previous completed forms.

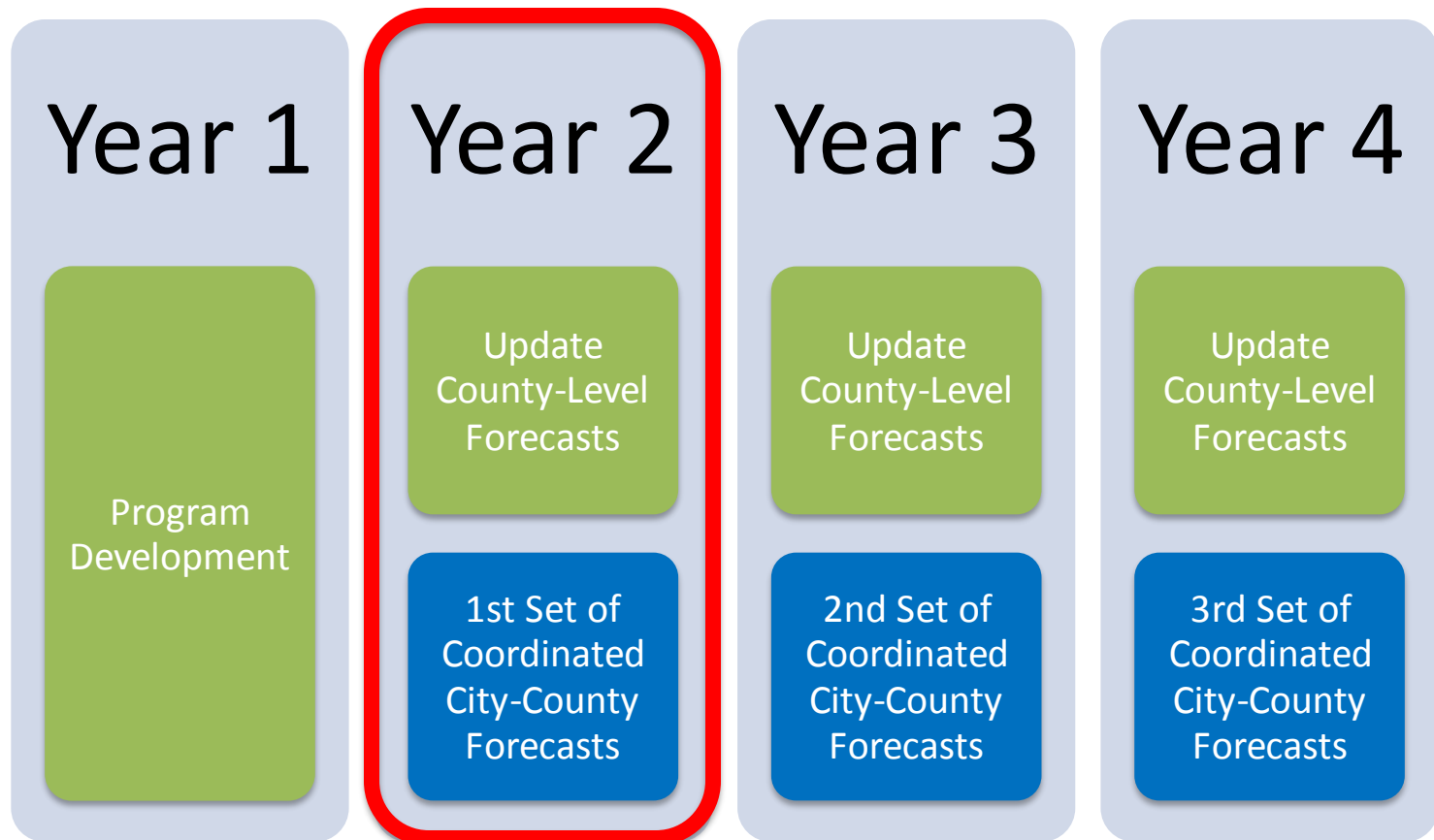
If you are the estimates contact person for your city or county, watch your email for the 2013 Annual Housing Unit and Population Questionnaire. Instructions will be provided with the email and questionnaire.

How we grow: see the **new annual population tables** for 2012!

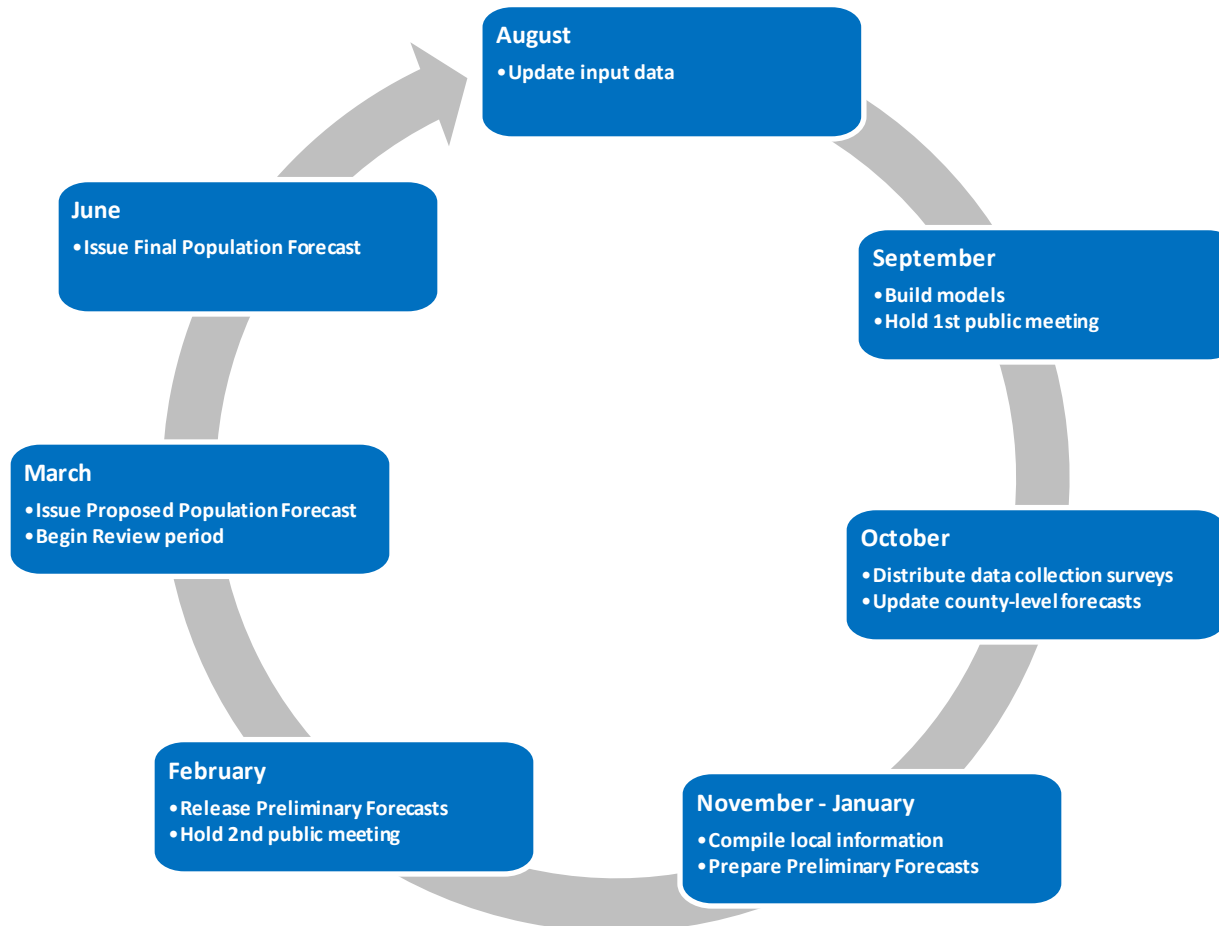




Forecast Program: 4-Year Schedule



Coordinated Forecast: Annual Schedule



Deliverables

- County-level forecasts
 - 50 year horizon
 - 5-year age cohorts by sex
- Coordinated city-level forecasts
 - UGB forecasts
 - Total population
- Report containing:
 - Information for all incorporated cities and counties
 - Summaries of historic and future demographic trends, assumptions about future growth, and a compilation of information collected from city and county officials and the public
 - Short technical description of methods employed to produce the forecast

Process for Population Forecasts

- Develop demographic models using historic and recent data
- Analyze past and current population trends
 - Reasons for change, continuous or short-term?
- Gather information about existing and planned future housing, and about population change
 - Housing developments
 - Construction of new GQ facilities
 - New employers
- Make assumptions about future housing and population change
- Revise forecasts on a regular basis

Population Forecast Methods

Primary Models for this Forecast

- Cohort-Component Method
 - Relies on Age-Sex Schedules of demographic behavior
 - Population pyramid displays age structure
 - Mortality - Fairly constant over time
 - Fertility - Decreased teen fertility, older mothers and Latino births
 - Migration Rates - Subject to greater fluctuation than mortality and fertility and more unpredictable
 - Generally used for areas with larger populations

Population Forecast Methods

Primary Models for this Forecast

- Housing Unit Method
 - For smaller cities and unincorporated areas, outside of UGBs
 - Housing unit growth - Trend actual, trend county shares
 - Housing unit type (single-/multi-family)
 - Household composition
 - Persons Per Household (PPH)
 - Occupancy Rates
 - Add Group Quarters Population
 - Controlled to Cohort-Component Model results for county

Population Forecast Methods

Primary Models for this Forecast

- Housing Unit Method, con't.
 - Fluctuations in housing unit growth follow economic trends with exceptions
 - Persons Per Household (PPH)
 - Factors that influence PPH: Race/Ethnicity, Age (fertility), Economy
 - Generally decreasing in U.S.
 - Occupancy Rates - Seasonal Housing

Population Forecast Methods

Other Models/Methods to Consider

- For comparison and to serve as a check
- Shift-Share and other Ratio Methods
- Trend Extrapolation
- Simple Economic/Employment Model
- Additional Housing Unit Models (in addition to CC models)

Population Forecast Data Sources

Primary Sources:

- U.S. Census Bureau, Decennial Censuses
- Population Research Center (PRC), Oregon Population Estimates Program
- Oregon Health Authority, Center for Health Statistics
- Incorporated counties, Assessors Office
- Incorporated cities, Community Development/Planning Department
- Oregon Geospatial Enterprise Office (GEO), Spatial Data Library

Secondary Sources:

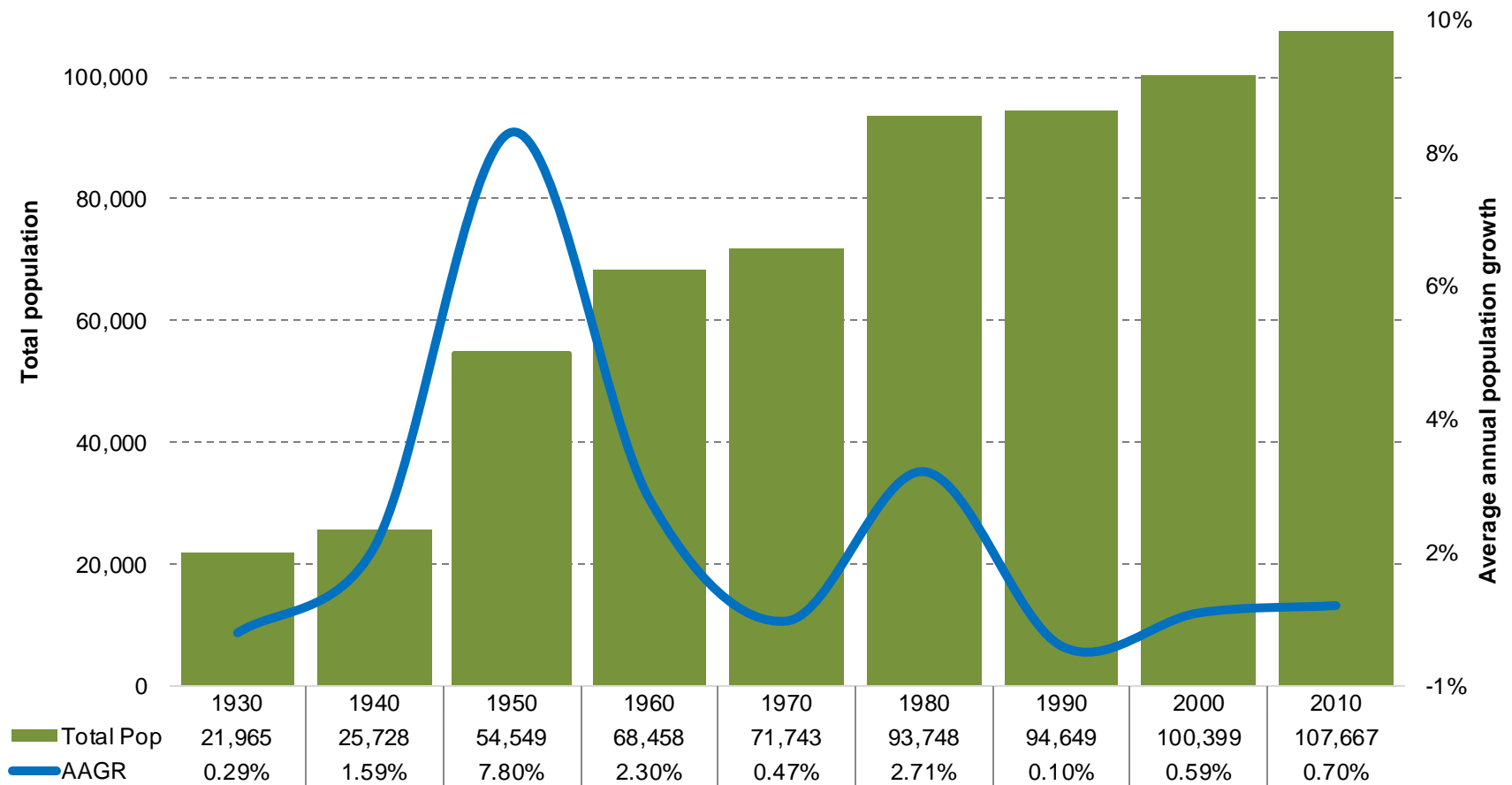
- State of Oregon, Office of Economic Analysis
- U.S. Census Bureau, American Community Survey (ACS)
- U.S., Internal Revenue Service
- State of Oregon, Department of Revenue
- Oregon Department of Education
- U.S., Centers for Medicare and Medicaid Services
- State of Oregon, Employment Department

Process for Local Input

- Hold regional meetings
 - Receive feed back on:
 - Historical and current demographic and economic trends
 - Local land use and growth management planning
- Local survey
 - Collect local observations
 - Population composition; recent change
 - Planned housing development plus group quarters facilities
 - Future employers
 - Infrastructure
 - Existing capacity
 - Planned expansion
 - Anything that might promote or hinder population growth
 - Survey will be posted on website and emailed to each jurisdiction
 - Issued in October, 2014

Douglas County

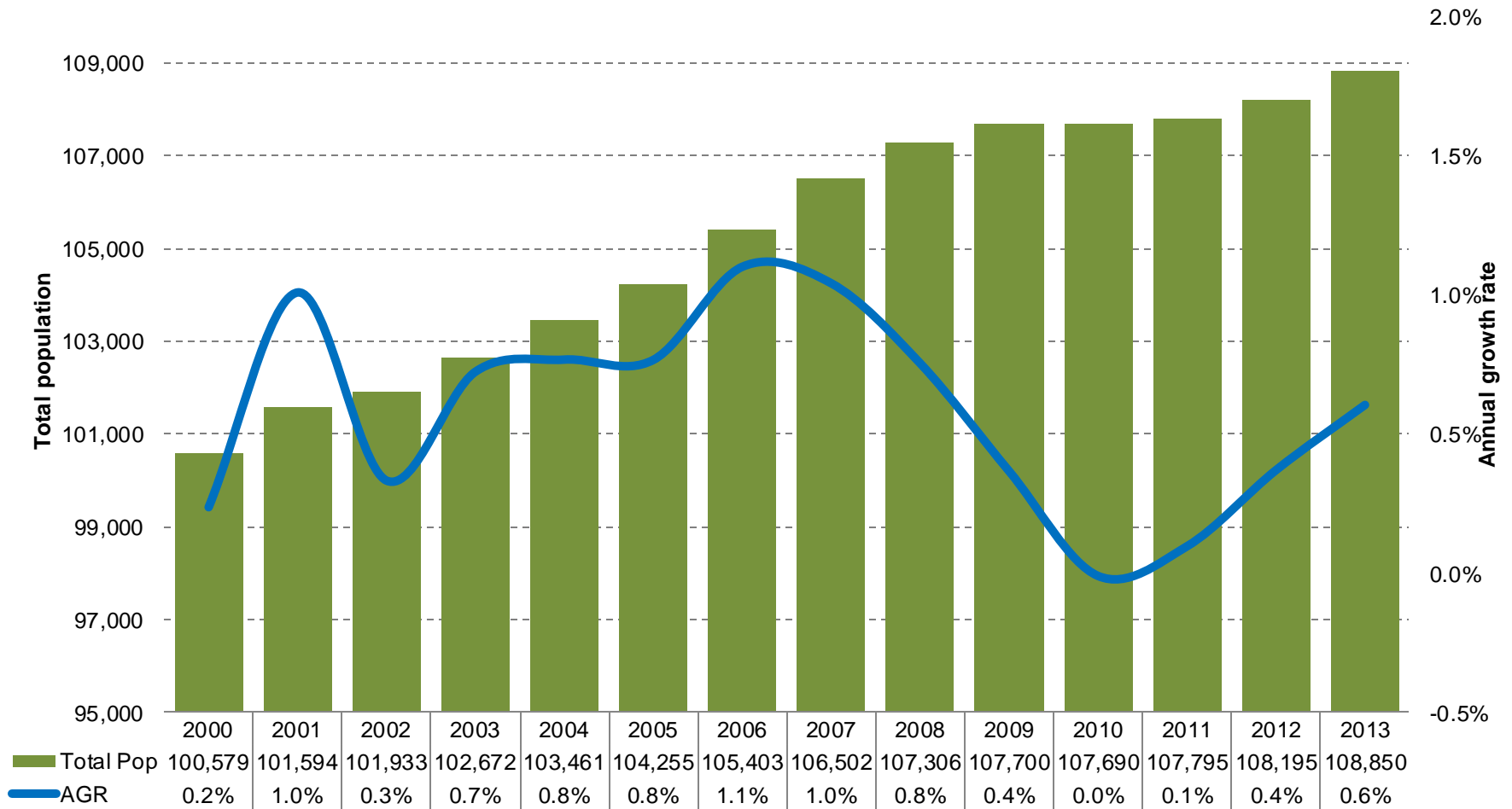
Douglas County – Historical Census Population



Source: U.S. Census Bureau, 1930 to 2010 Decennial Censuses. Calculated by Population Research Center (PRC).

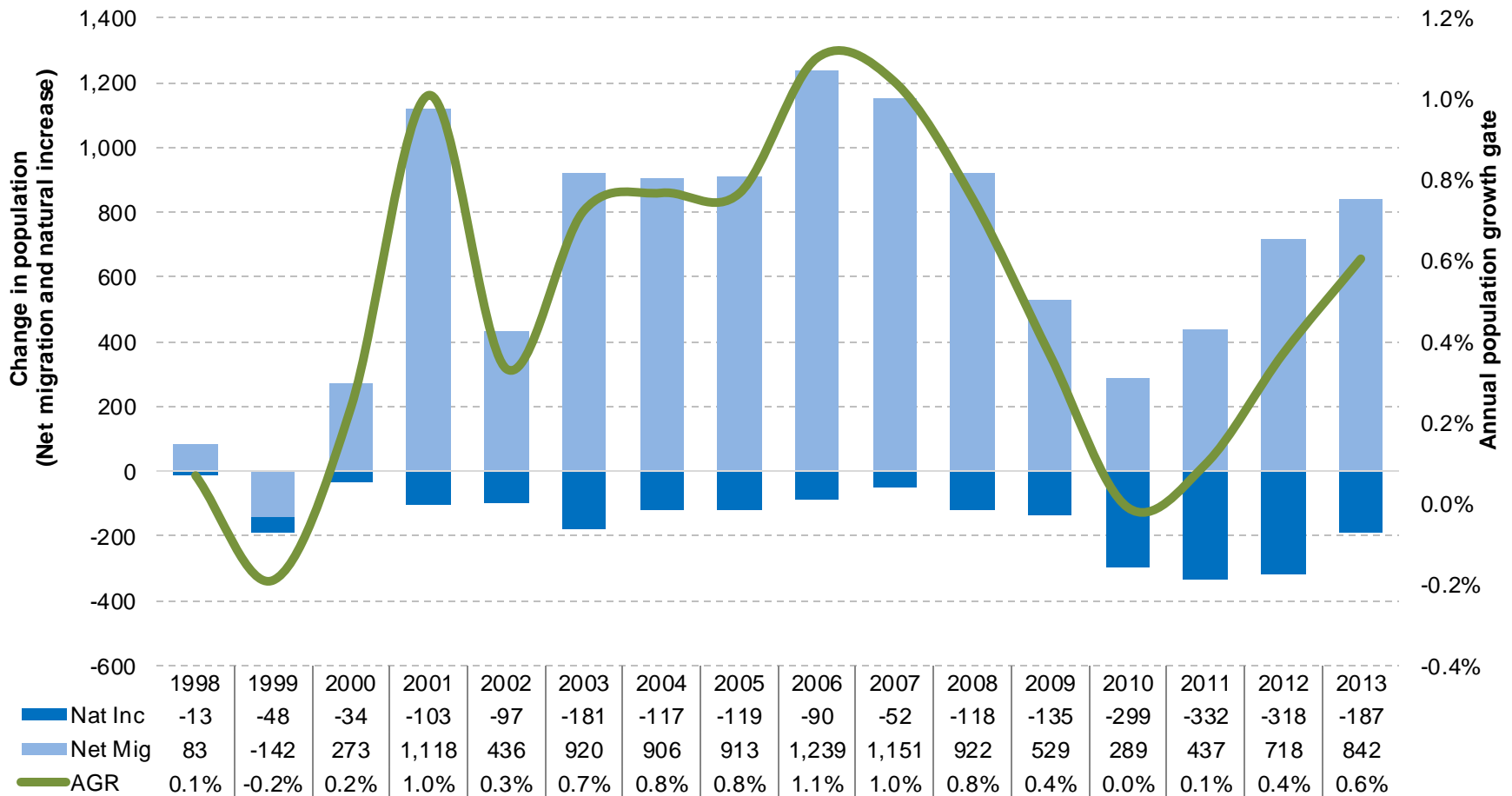
Note: Average annual growth rate is used for simplicity. In actuality the rate is an annualized rate calculated with this formula = $[(\text{Year1}/\text{Year2})^{(1/10)}]-1$

Douglas County – Recent Annual Population Trend – July 1st Estimate



Source: Population Research Center Annual Estimates 2000-2013. Calculated by Population Research Center (PRC).

Douglas County - Natural Increase and Net Migration



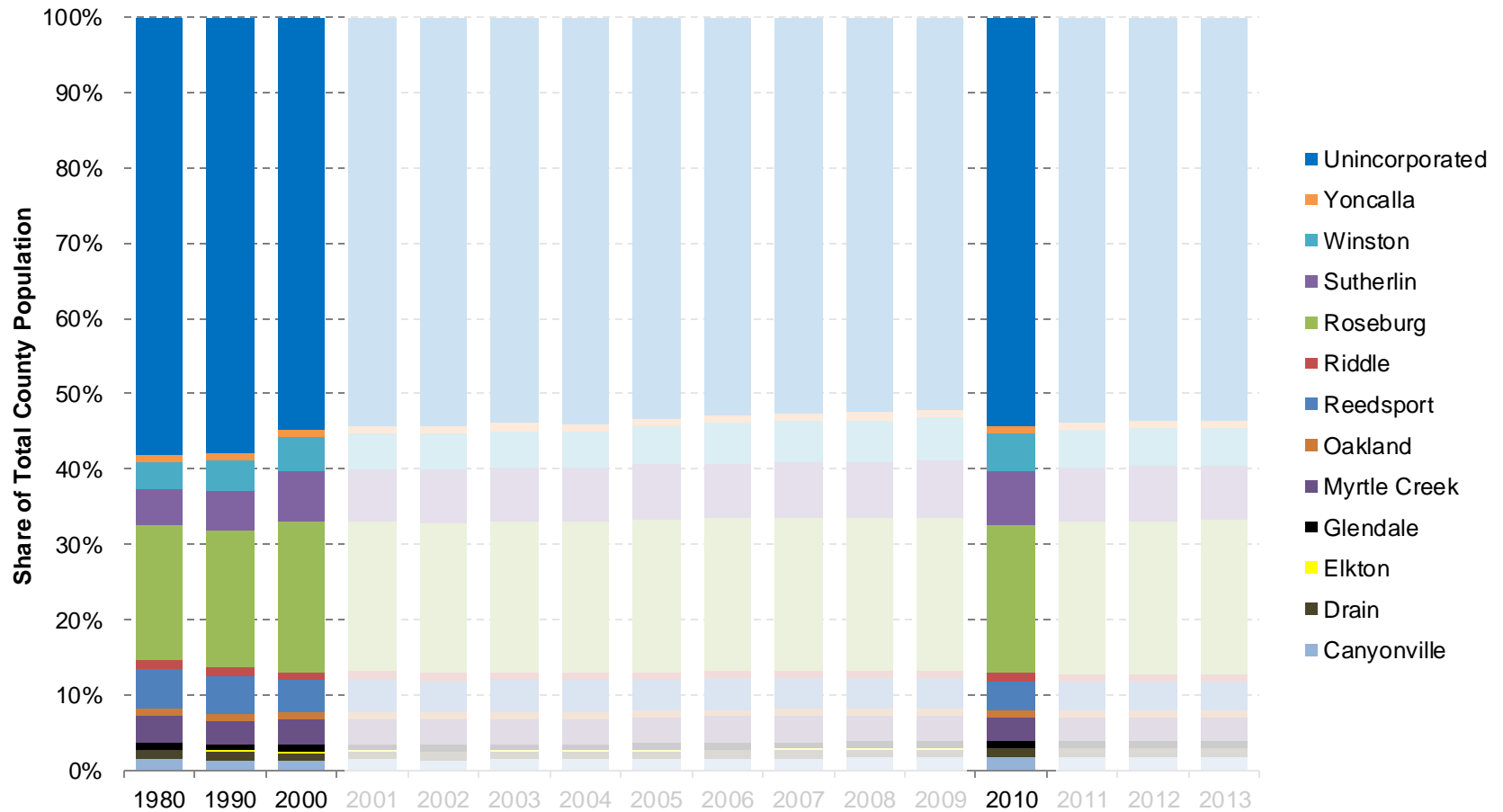
Source: Population Research Center, July 1st Annual Estimates 1998-2013. Oregon Health Authority, Center for Health Statistics. Calculated by Population Research Center (PRC).

Douglas County and Incorporated City Population

	Total Population			Share of County Population			Average Annual Growth Rate	
	2000	2010	2013	2000	2010	2013	2000-2010	2010-2013
Douglas County	100,399	107,667	108,850	100%	100%	100%	0.7%	0.4%
<i>Canyonville</i>	1,293	1,884	1,910	1%	2%	2%	3.8%	0.5%
<i>Drain</i>	1,021	1,151	1,160	1%	1%	1%	1.2%	0.3%
<i>Elkton</i>	147	195	200	0%	0%	0%	2.9%	0.8%
<i>Glendale</i>	855	874	875	1%	1%	1%	0.2%	0.0%
<i>Myrtle Creek</i>	3,419	3,439	3,450	3%	3%	3%	0.1%	0.1%
<i>Oakland</i>	954	927	935	1%	1%	1%	-0.3%	0.3%
<i>Reedsport</i>	4,378	4,154	4,150	4%	4%	4%	-0.5%	0.0%
<i>Riddle</i>	1,014	1,185	1,185	1%	1%	1%	1.6%	0.0%
<i>Roseburg</i>	20,017	21,181	22,275	20%	20%	20%	0.6%	1.7%
<i>Sutherlin</i>	6,669	7,810	7,930	7%	7%	7%	1.6%	0.5%
<i>Winston</i>	4,613	5,379	5,400	5%	5%	5%	1.5%	0.1%
<i>Yoncalla</i>	1,052	1,047	1,060	1%	1%	1%	0.0%	0.4%
<i>Unincorporated</i>	54,967	58,441	58,320	55%	54%	54%	0.6%	-0.1%

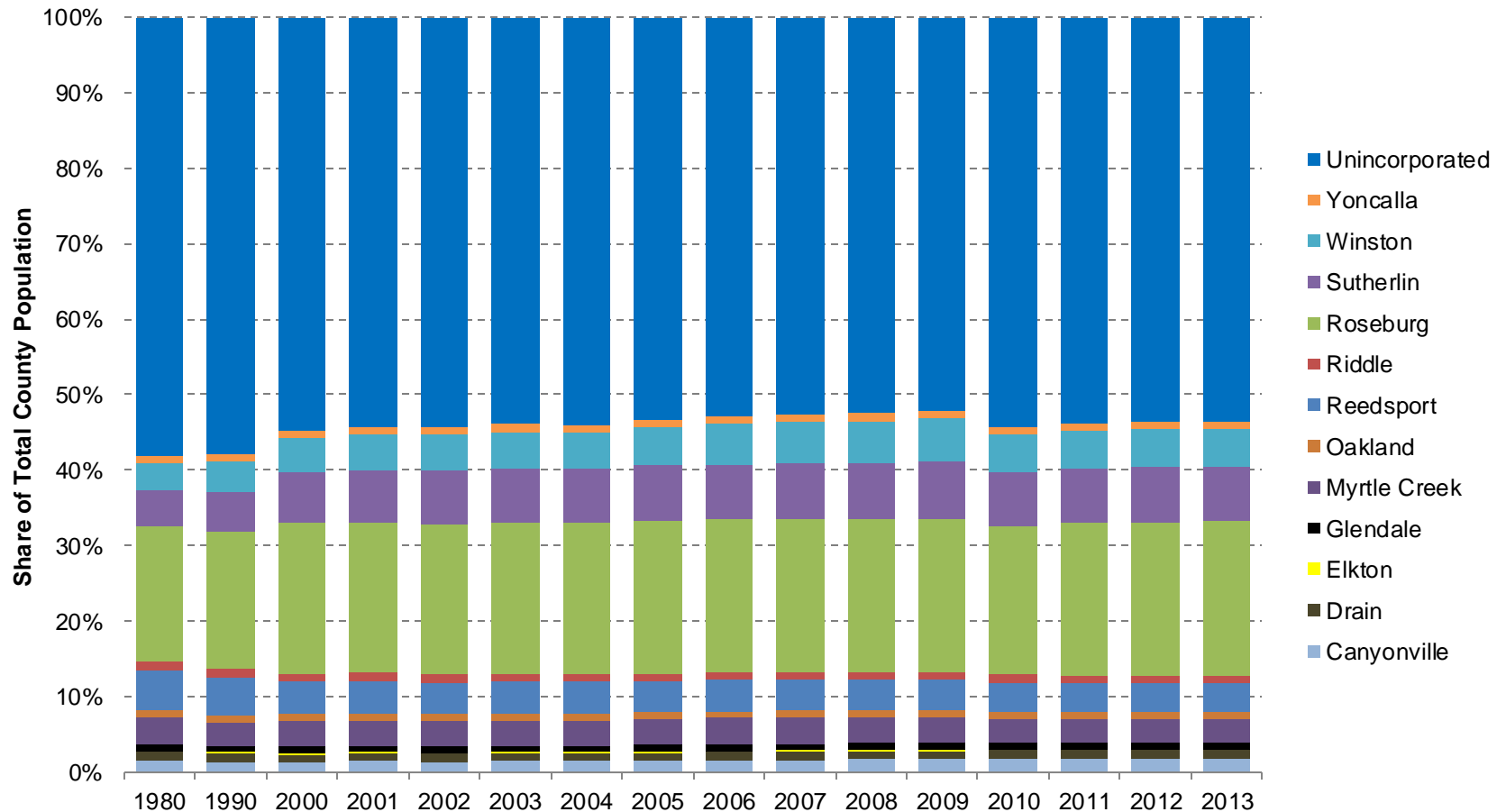
Source: U.S. Census Bureau, 2000 and 2010 Decennial Census. Population Research Center, July 1, 2013 Annual Intercensal Estimate. Calculated by Population Research Center (PRC).

Douglas County - City Share of Population



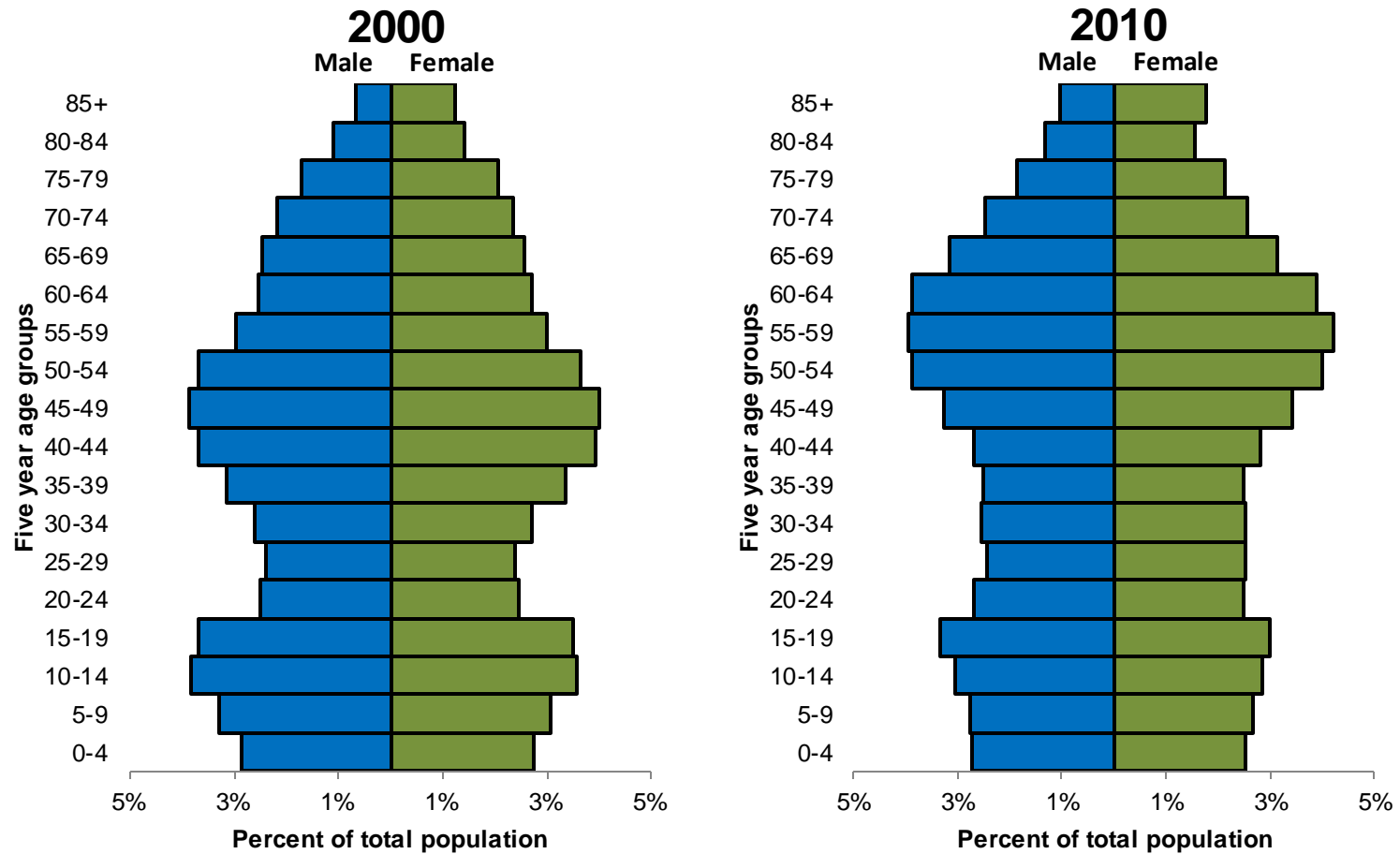
Source: U.S. Census Bureau. 1980, 1990, 2000 and 2010 Decennial Census. Population Research Center, July 1st Annual Estimates 2001-2009 and 2011-2013. Calculated by Population Research Center (PRC).

Douglas County - City Share of Population



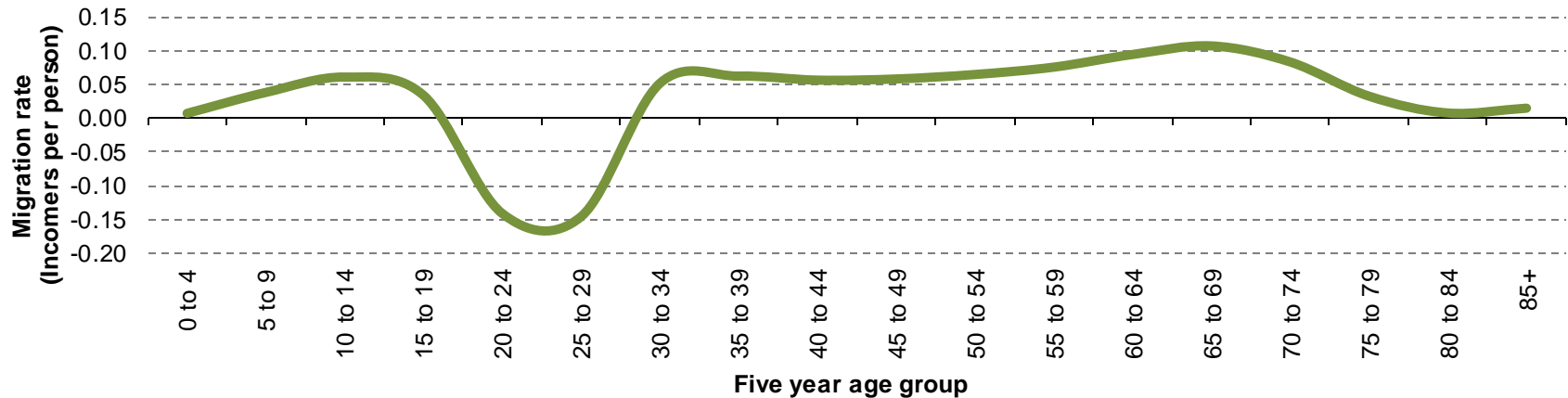
Source: U.S. Census Bureau. 1980, 1990, 2000 and 2010 Decennial Census. Population Research Center, July 1st Annual Estimates 2001-2009 and 2011-2013. Calculated by Population Research Center (PRC).

Douglas County – Distribution by Age of Total Population

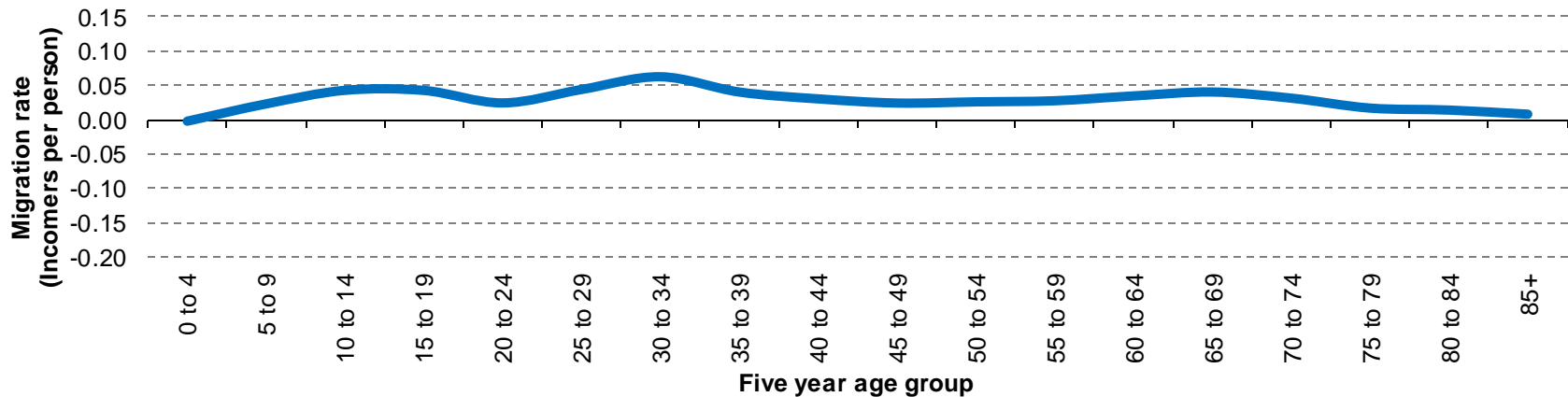


Source: U.S. Census Bureau. 2000 and 2010 Decennial Census.

Douglas County – 5yr Migration Rates for Total Population, 2000-2010

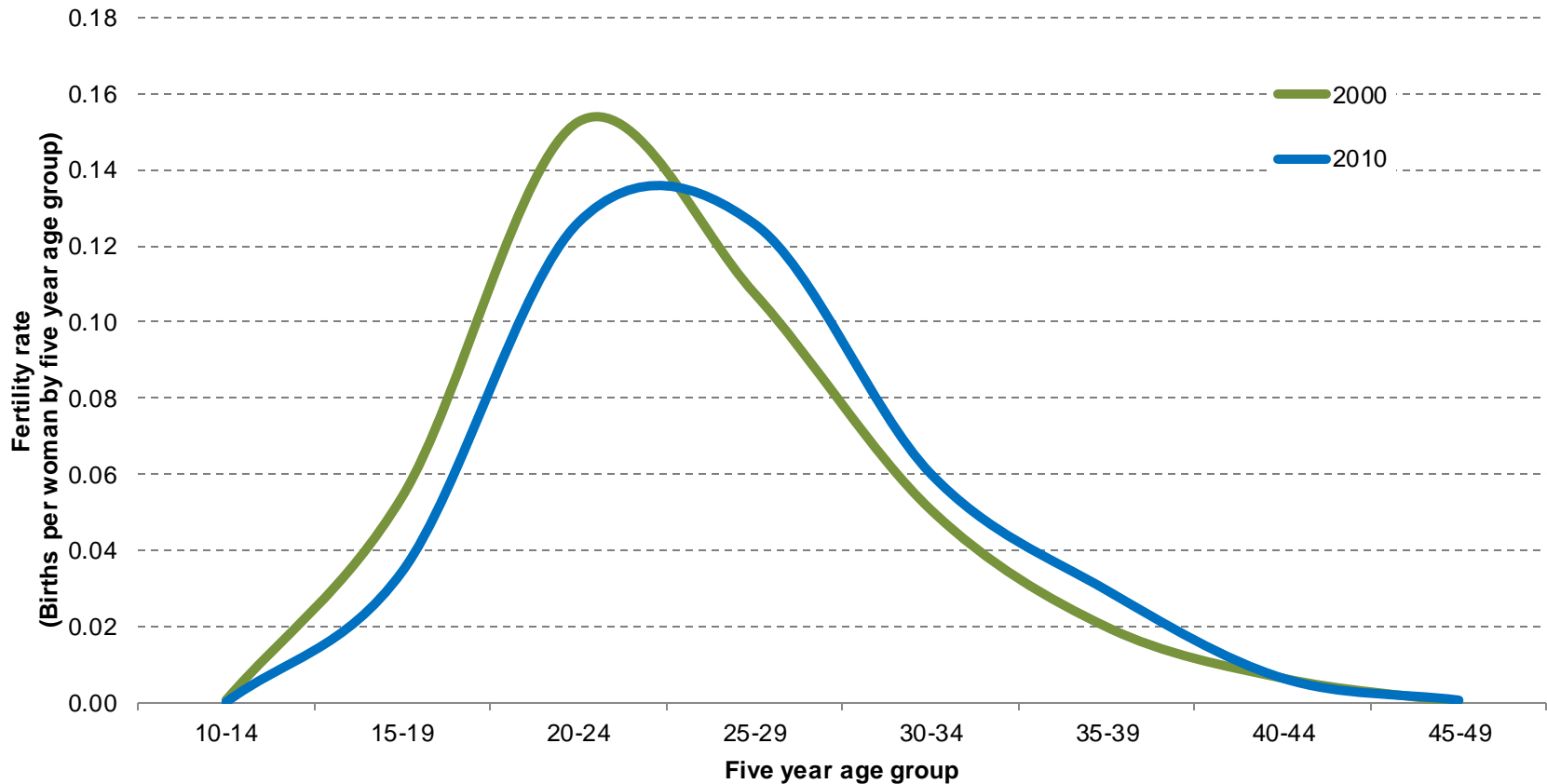


Oregon – 5yr Migration Rates for Total Population, 2000-2010



Source: U.S. Census Bureau. 2000 and 2010 Decennial Census. Calculated by Population Research Center (PRC).

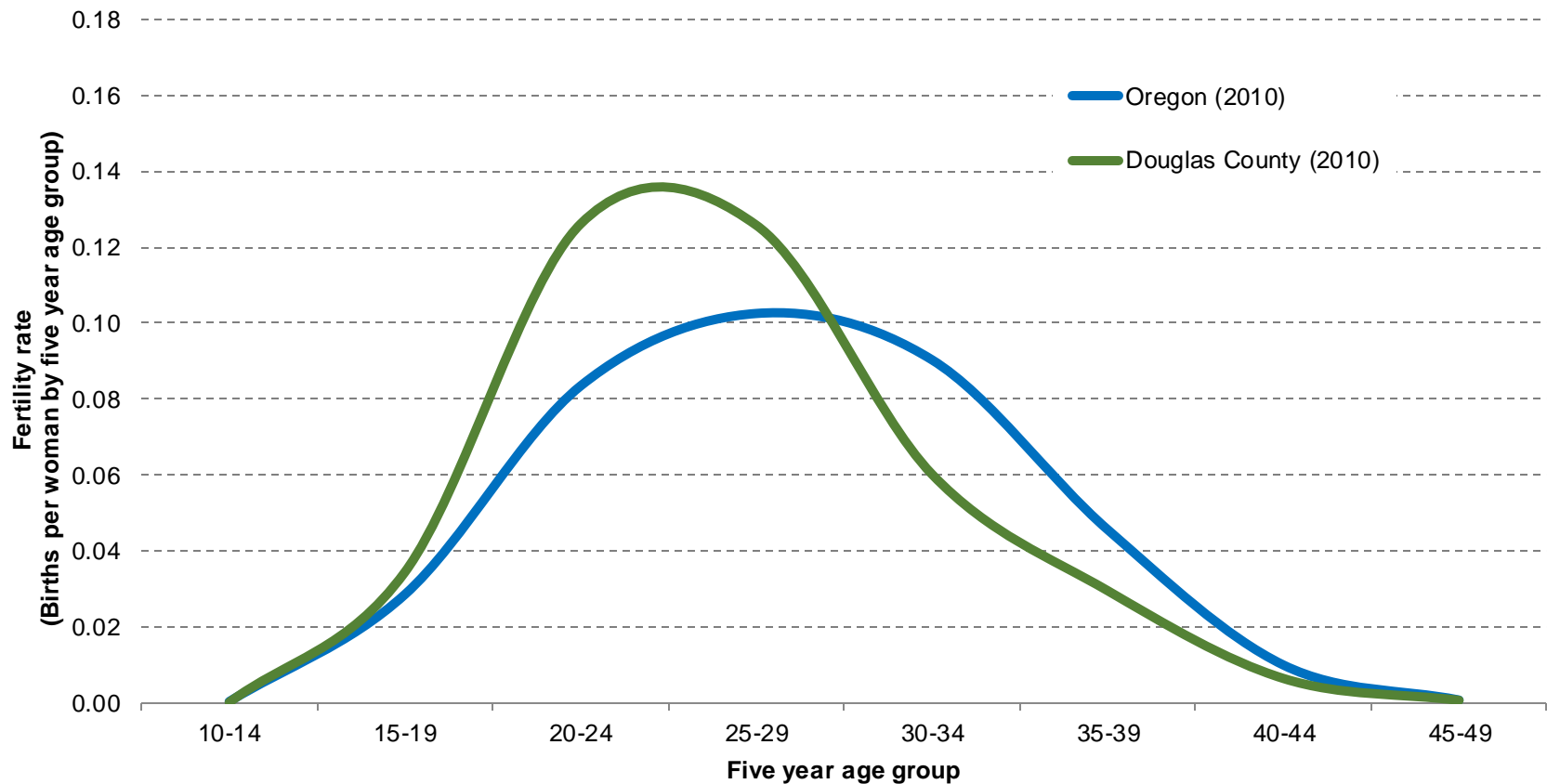
Douglas County – Age Specific Fertility Rates



	2000	2010
Total fertility rate	1.957	1.913

Source: U.S. Census Bureau, 2000 and 2010 Decennial Census. Oregon Health Authority, Center for Health Statistics. Calculated by Population Research Center (PRC).

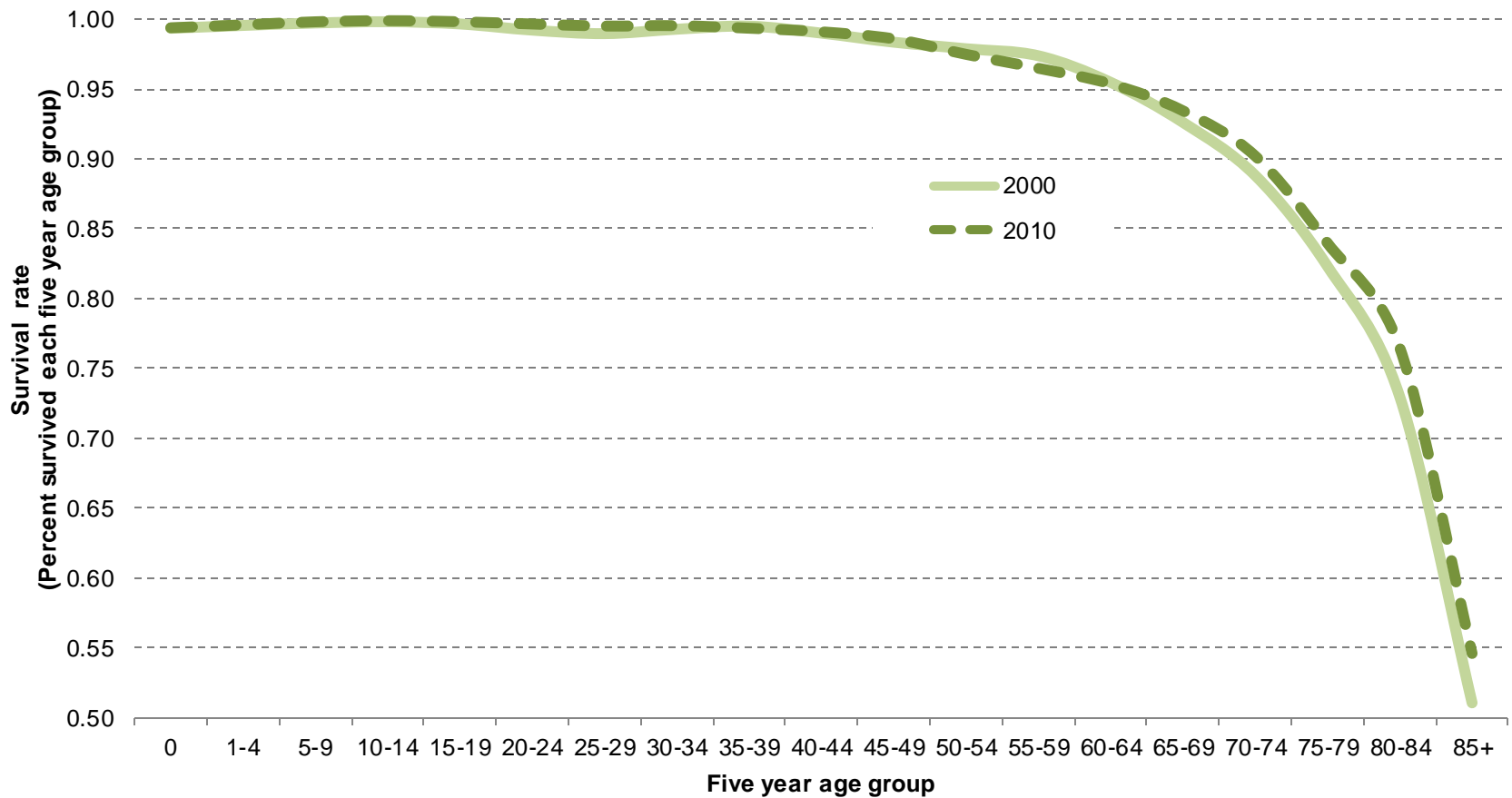
Douglas County and Oregon – Age Specific Fertility Rates (2010)



	Douglas County	Oregon
Total fertility rate	1.913	1.805

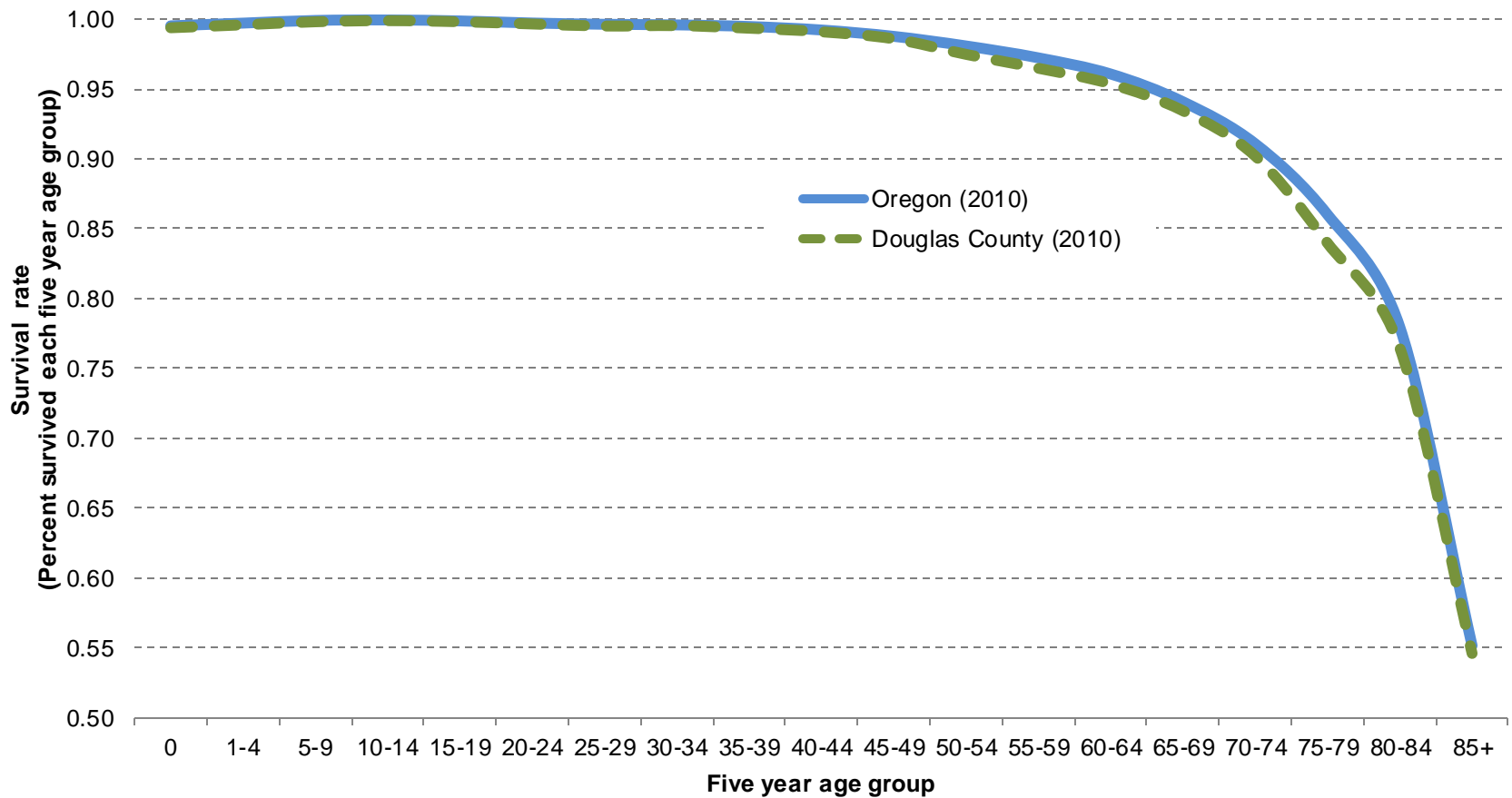
Source: U.S. Census Bureau, 2000 and 2010 Decennial Census. Oregon Health Authority, Center for Health Statistics. Calculated by Population Research Center (PRC).

Douglas County – Age Specific Survival Rates



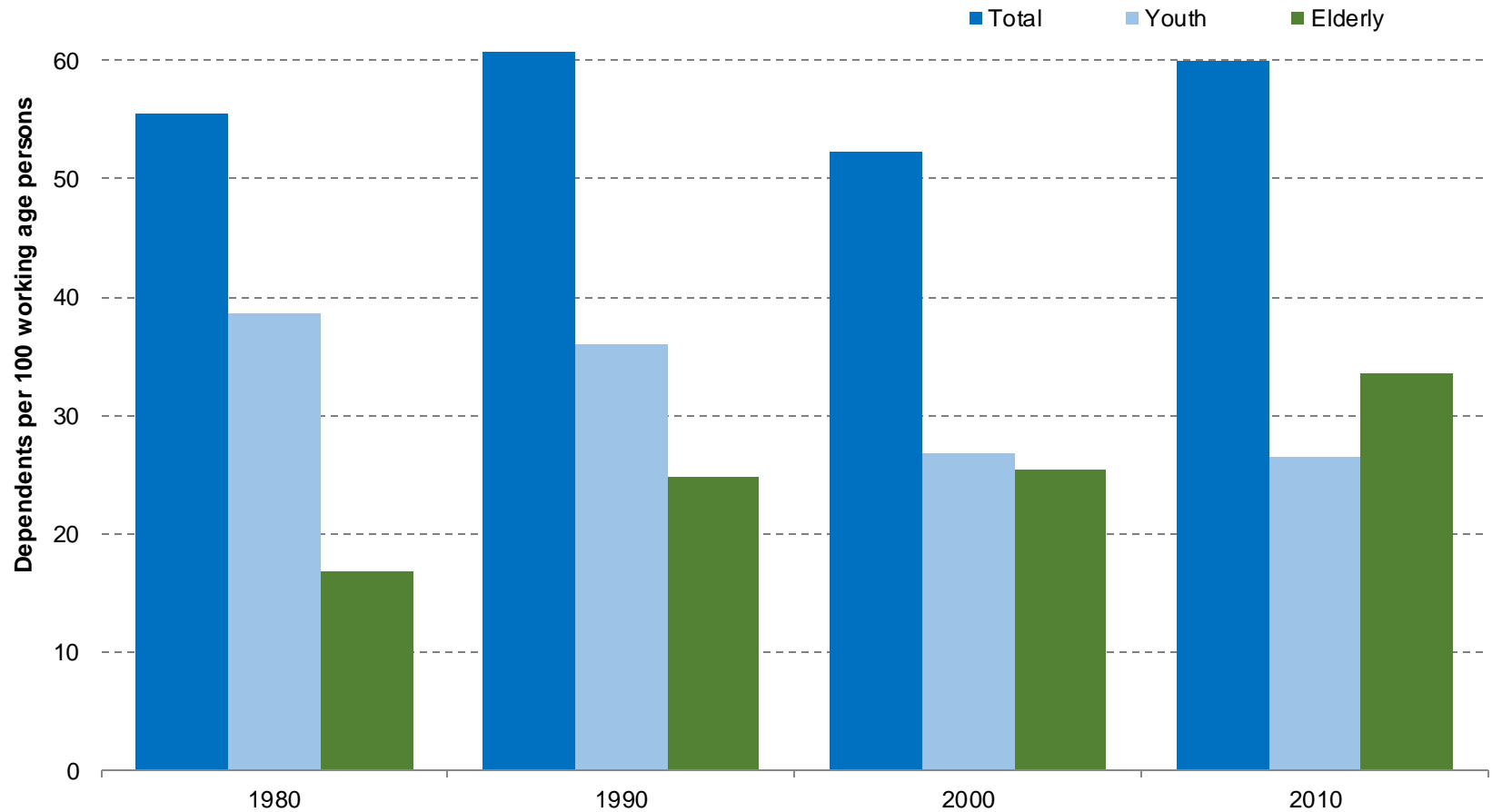
Source: U.S. Census Bureau, 2000 and 2010 Decennial Census. Oregon Health Authority, Center for Health Statistics. Calculated by Population Research Center (PRC).

Douglas County and Oregon – Age Specific Survival Rates



Source: U.S. Census Bureau, 2000 and 2010 Decennial Census. Oregon Health Authority, Center for Health Statistics. Calculated by Population Research Center (PRC).

Douglas County - Dependency Ratio



Source: U.S. Census Bureau, 1980, 1990, 2000, and 2010 Decennial Census. Calculated by Population Research Center (PRC).

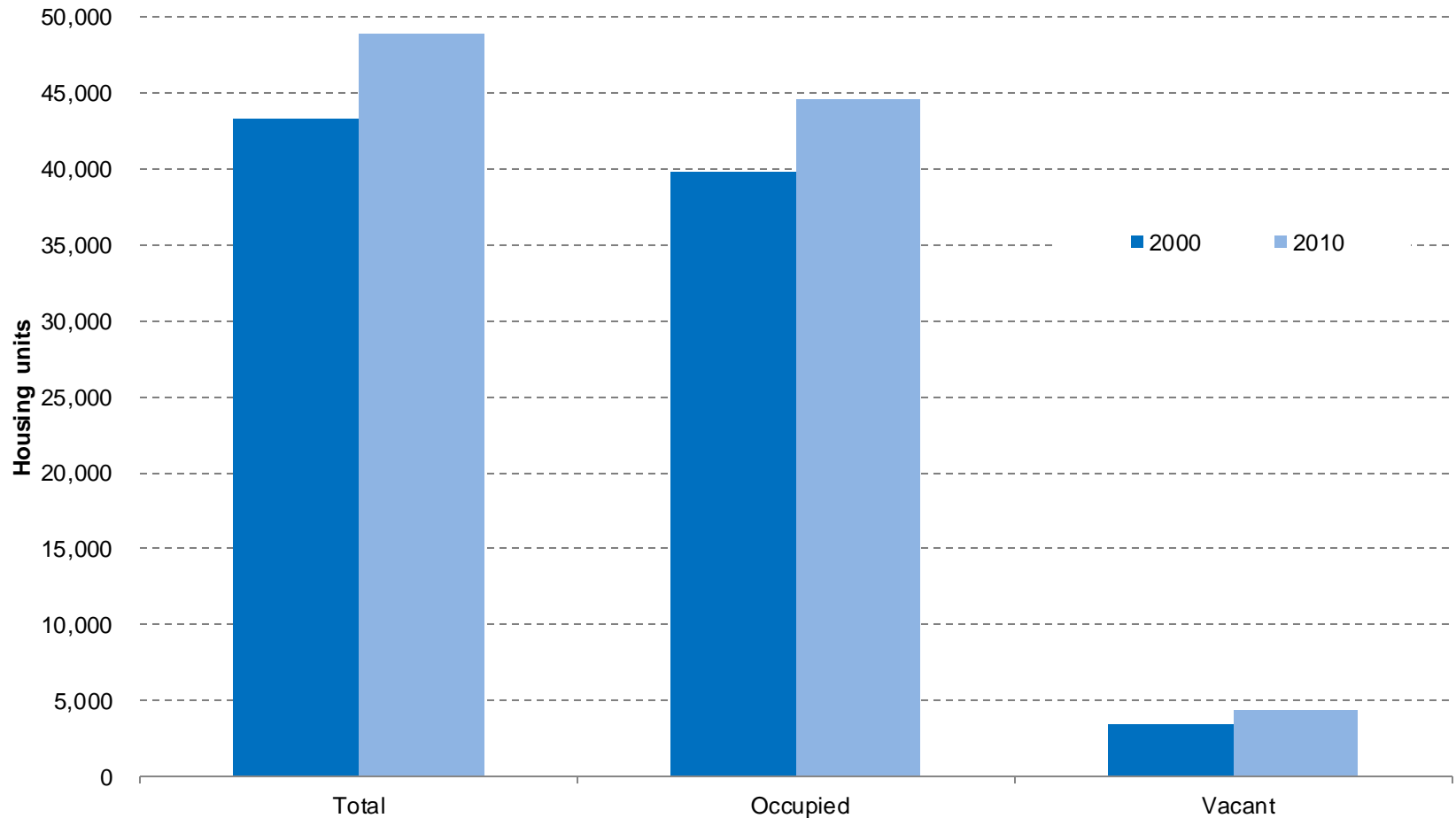
Note: Dependency Ratio = $\{[(\text{Population Age 0-14}) + (\text{Population Age 65 or older})] / (\text{Population Age 15-64})\} \times 100$

Douglas County

Hispanic or Latino and race	2000		2010		Change	
Total population	100,399	100.0%	107,667	100.0%	7,268	7.2%
Hispanic or Latino	3,283	3.3%	5,055	4.7%	1,772	54.0%
Not Hispanic or Latino	97,116	96.7%	102,612	95.3%	5,496	5.7%
White alone	92,302	91.9%	96,343	89.5%	4,041	4.4%
Black or African American alone	165	0.2%	279	0.3%	114	69.1%
American Indian and Alaska Native alone	1,446	1.4%	1,799	1.7%	353	24.4%
Asian alone	601	0.6%	1,008	0.9%	407	67.7%
Native Hawaiian and Other Pacific Islander alone	83	0.1%	110	0.1%	27	32.5%
Some Other Race alone	86	0.1%	154	0.1%	68	79.1%
Two or More Races	2,433	2.4%	2,919	2.7%	486	20.0%

Source: U.S. Census Bureau. 2000 and 2010 Decennial Census.

Douglas County - Housing Units



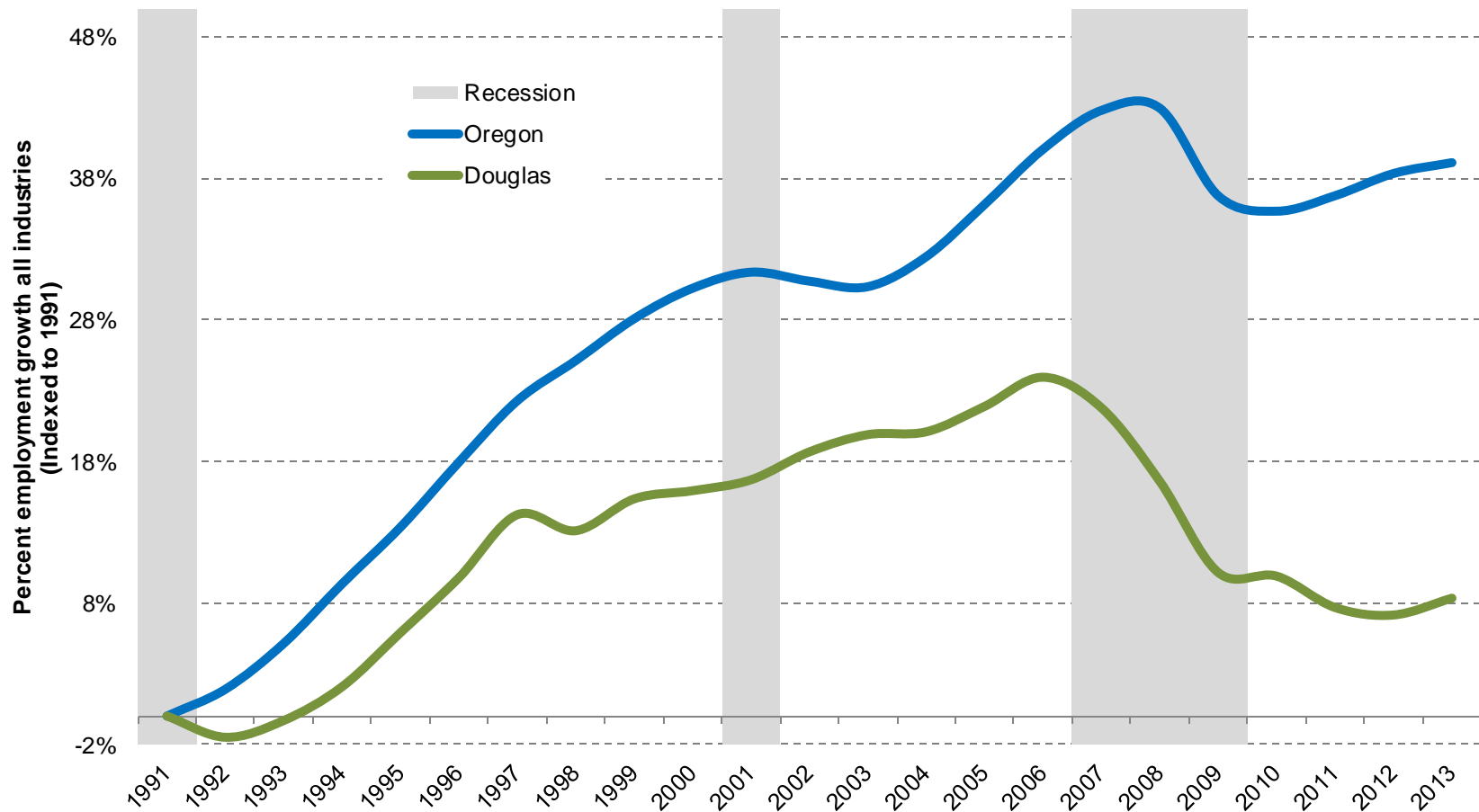
Source: U.S. Census Bureau. 2000 and 2010 Decennial Census.

	Persons Per Household (PPH)		Occupancy Rate		Percent Group Quarters		Percent Seasonal Housing*
	2000	2010	2000	2010	2000	2010	2010
Oregon	2.51	2.47	91.8%	90.7%	2.3%	2.3%	3.31%
Douglas County	2.48	2.38	92.0%	91.1%	1.5%	1.6%	2.03%
Canyonville	2.41	2.40	92.1%	92.2%	0.4%	3.5%	0.73%
Drain	2.57	2.54	90.0%	92.3%	0.0%	0.0%	0.81%
Elkton	2.04	2.29	87.8%	77.3%	0.0%	0.0%	13.64%
Glendale	2.75	2.69	87.6%	83.1%	0.0%	0.0%	1.02%
Myrtle Creek	2.55	2.46	93.2%	90.9%	0.0%	1.2%	0.59%
Oakland	2.53	2.44	93.3%	92.2%	0.0%	0.0%	1.46%
Reedsport	2.19	2.11	90.8%	88.3%	1.0%	1.1%	2.76%
Riddle	2.66	2.57	93.8%	93.7%	0.0%	0.4%	0.20%
Roseburg	2.32	2.23	93.2%	93.3%	4.6%	4.5%	0.45%
Sutherlin	2.46	2.37	91.2%	91.1%	0.1%	1.2%	0.84%
Winston	2.61	2.50	92.7%	92.4%	0.6%	0.6%	0.39%
Yoncalla	2.56	2.37	93.6%	92.6%	0.4%	0.0%	0.42%
Unincorporated	2.55	2.43	91.7%	90.5%	0.9%	0.8%	NA

Source: U.S. Census Bureau. 2000 and 2010 Decennial Census. Calculated by Population Research Center (PRC).

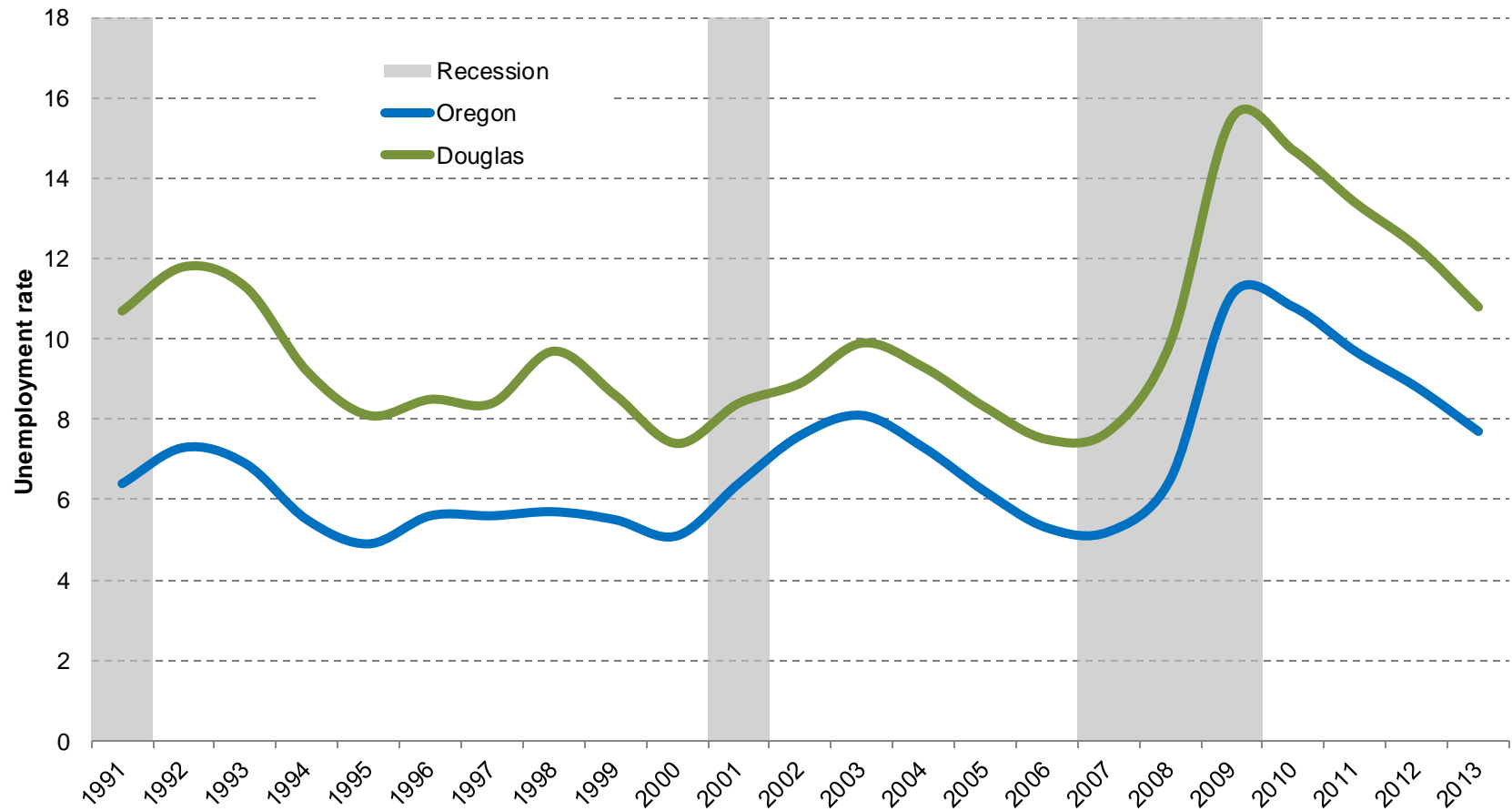
*Note: Percent Seasonal Housing is the proportion of total housing units in 2010 that are identified as vacant "for seasonal, recreational, or occasional use."

Douglas County - Employment Growth since 1991



Source: U.S. Census Bureau. 2013. Quarterly Workforce Indicators Data. Longitudinal-Employer Household Dynamics Program. <http://ledextract.ces.census.gov/>.
Calculated by Population Research Center (PRC).

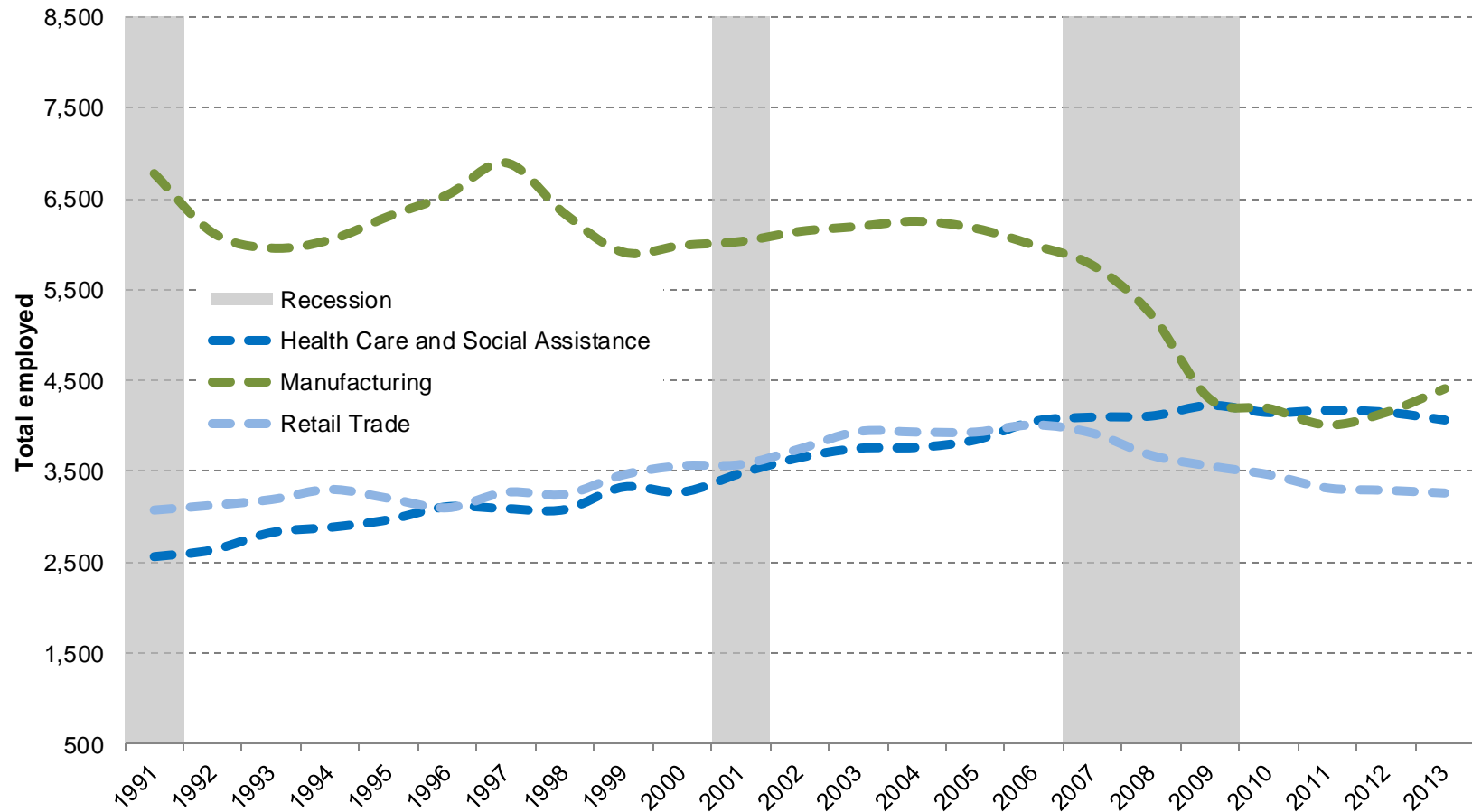
Douglas County and Oregon - Unemployment Rate



Source: Oregon Employment Department. Local Area Employment Statistics. Oregon Labor Market Information System. <http://www.qualityinfo.org/olmis/labforce>.

Note: The rate represents the percent of the labor force seeking work but not employed.

Douglas County - Top Three Industries by Average Quarterly Employment in 2013



Source: U.S. Census Bureau. 2013. Quarterly Workforce Indicators Data. Longitudinal-Employer Household Dynamics Program. <http://ledextract.ces.census.gov/>.

Calculated by Population Research Center (PRC).

Note: The quarterly employment data used in this chart is not seasonally adjusted.

Local Input and Additional Information

- Questions?
- Discussion time