

# Oregon Population Forecast Program

Regional Forecast Meeting – October 1, 2015

**Presentation by**

**Population Forecast Program Team**

**Umatilla County**

# Oregon Population Forecast Program Project Team

**Xiaomin Ruan,**

*Population Forecast Program Coordinator*

**Risa S. Proehl,**

*Population Estimates Program Manager*

**Jason R. Jurjevich,**

*Assistant Director Population Research Center*

**Kevin Rancik,**

*GIS and Research Analyst*

**Janai Kessi,**

*Research Analyst*

**Carson Gorecki,**

*Graduate Research Assistant*

**David Tetrick,**

*Graduate Research Assistant*

# Agenda

- Population Research Center (PRC)
- Forecast Program overview
  - Forecast regions
  - Schedule
  - Deliverables
  - Forecasting methods and data sources
  - Process for local input
- Demographic and economic trends
- Discussion


## PRC Research areas:

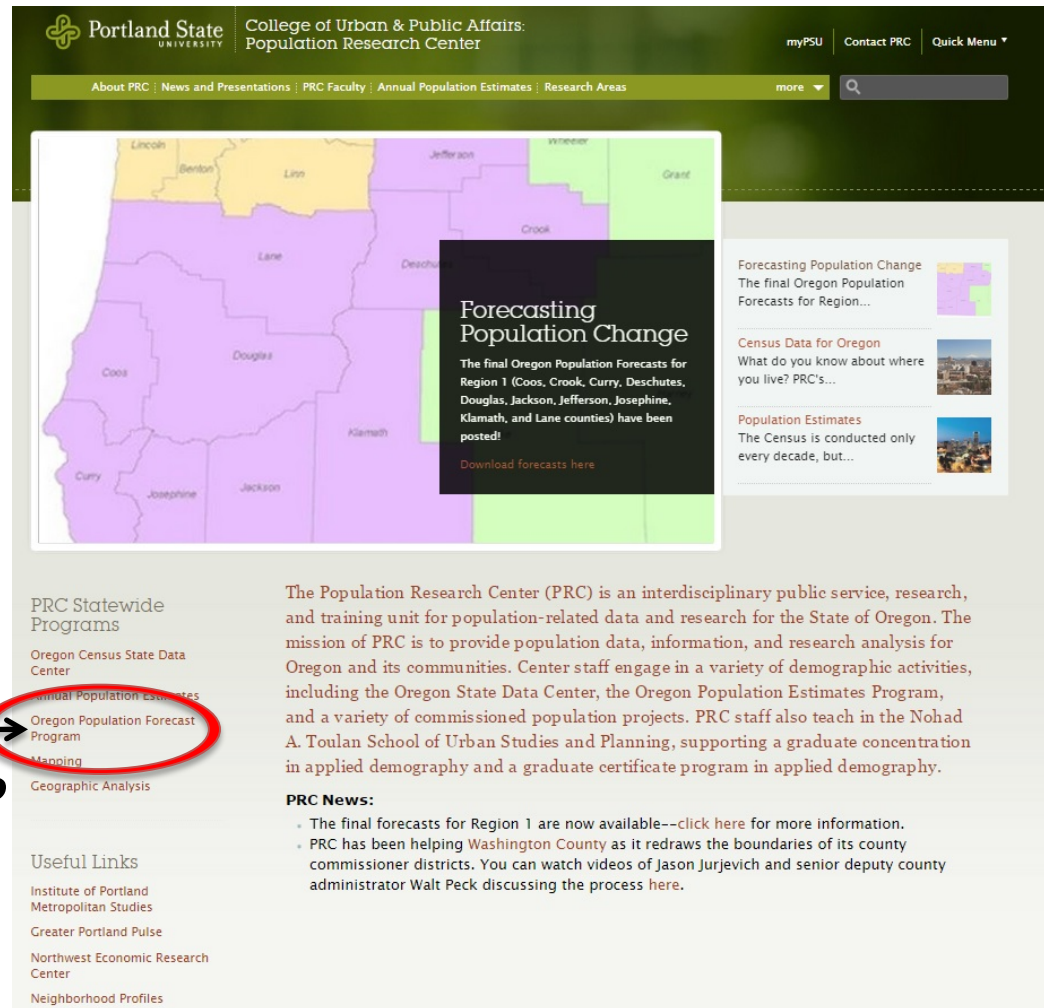
- Oregon Census State Data Center (SDC)
- Demographic Research and Advisory Services
- Demography Instruction
- Oregon Population Estimates Program
- **Oregon Population Forecast Program (OPFP)**

# Forecast Program Overview

PRC Website:

<http://www.pdx.edu/prc>

Click here for  more information on OPFP



The screenshot shows the website of the Portland State University Population Research Center. The header includes the university logo, the center's name, and navigation links like 'myPSU', 'Contact PRC', and 'Quick Menu'. A main banner features a map of Oregon counties with a text box titled 'Forecasting Population Change' that states: 'The final Oregon Population Forecasts for Region 1 (Coos, Crook, Curry, Deschutes, Douglas, Jackson, Jefferson, Josephine, Klamath, and Lane counties) have been posted!' and includes a 'Download forecasts here' link. To the right of the map are three featured articles: 'Forecasting Population Change', 'Census Data for Oregon', and 'Population Estimates'. A sidebar on the left lists 'PRC Statewide Programs' including 'Oregon Census State Data Center', 'Annual Population Estimates', 'Oregon Population Forecast Program' (which is circled in red), 'Mapping', and 'Geographic Analysis'. Below this is a 'Useful Links' section with links to the 'Institute of Portland Metropolitan Studies', 'Greater Portland Pulse', 'Northwest Economic Research Center', and 'Neighborhood Profiles'. A 'PRC News' section on the right contains two bullet points about the final forecasts for Region 1 and the county boundary redrawing process in Washington County.

Portland State University  
College of Urban & Public Affairs:  
Population Research Center

myPSU | Contact PRC | Quick Menu

About PRC | News and Presentations | PRC Faculty | Annual Population Estimates | Research Areas

more

Forecasting Population Change  
The final Oregon Population Forecasts for Region 1 (Coos, Crook, Curry, Deschutes, Douglas, Jackson, Jefferson, Josephine, Klamath, and Lane counties) have been posted!  
Download forecasts here

Forecasting Population Change  
The final Oregon Population Forecasts for Region 1 (Coos, Crook, Curry, Deschutes, Douglas, Jackson, Jefferson, Josephine, Klamath, and Lane counties) have been posted!

Census Data for Oregon  
What do you know about where you live? PRC's...

Population Estimates  
The Census is conducted only every decade, but...

PRC Statewide Programs

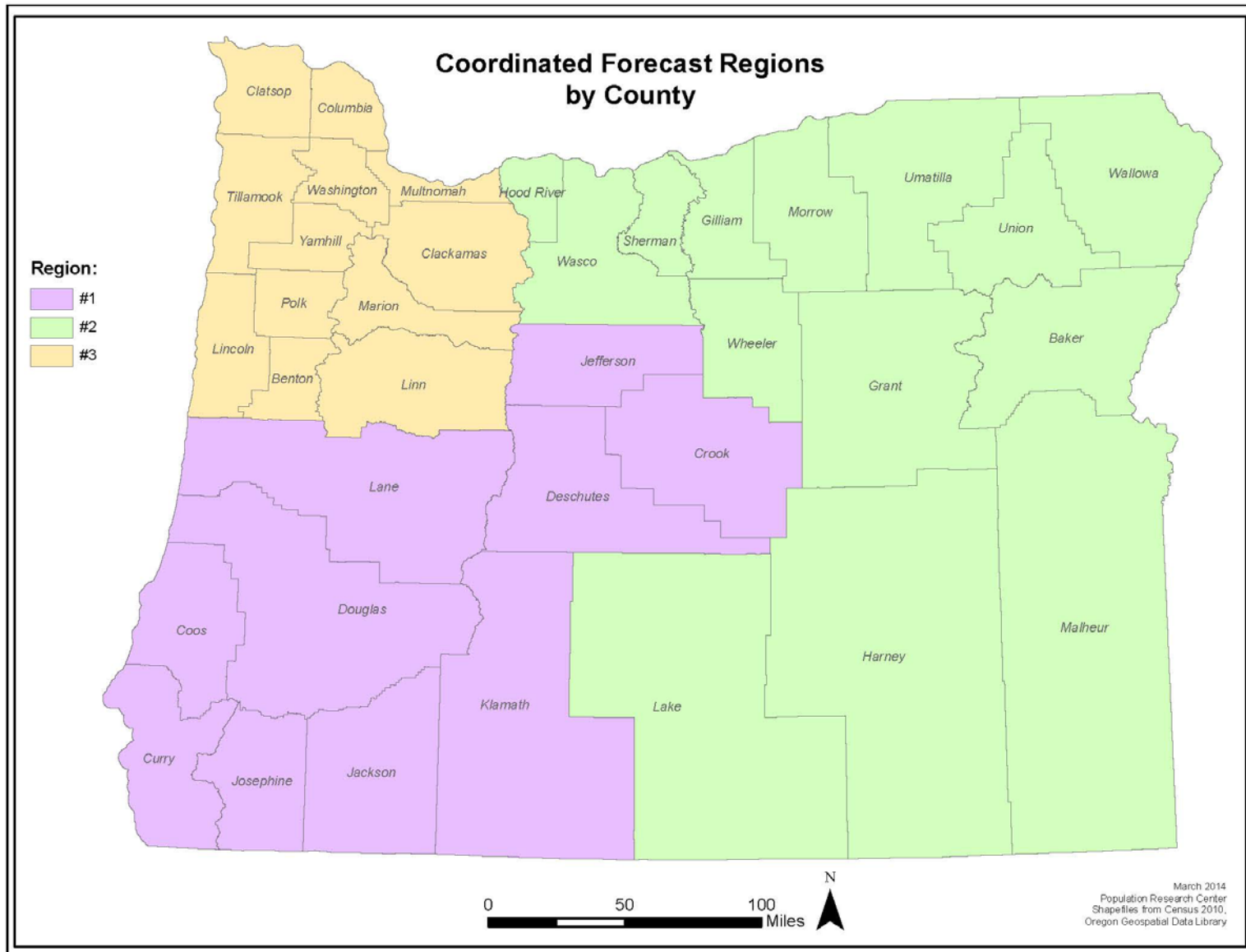
- Oregon Census State Data Center
- Annual Population Estimates
- Oregon Population Forecast Program**
- Mapping
- Geographic Analysis

Useful Links

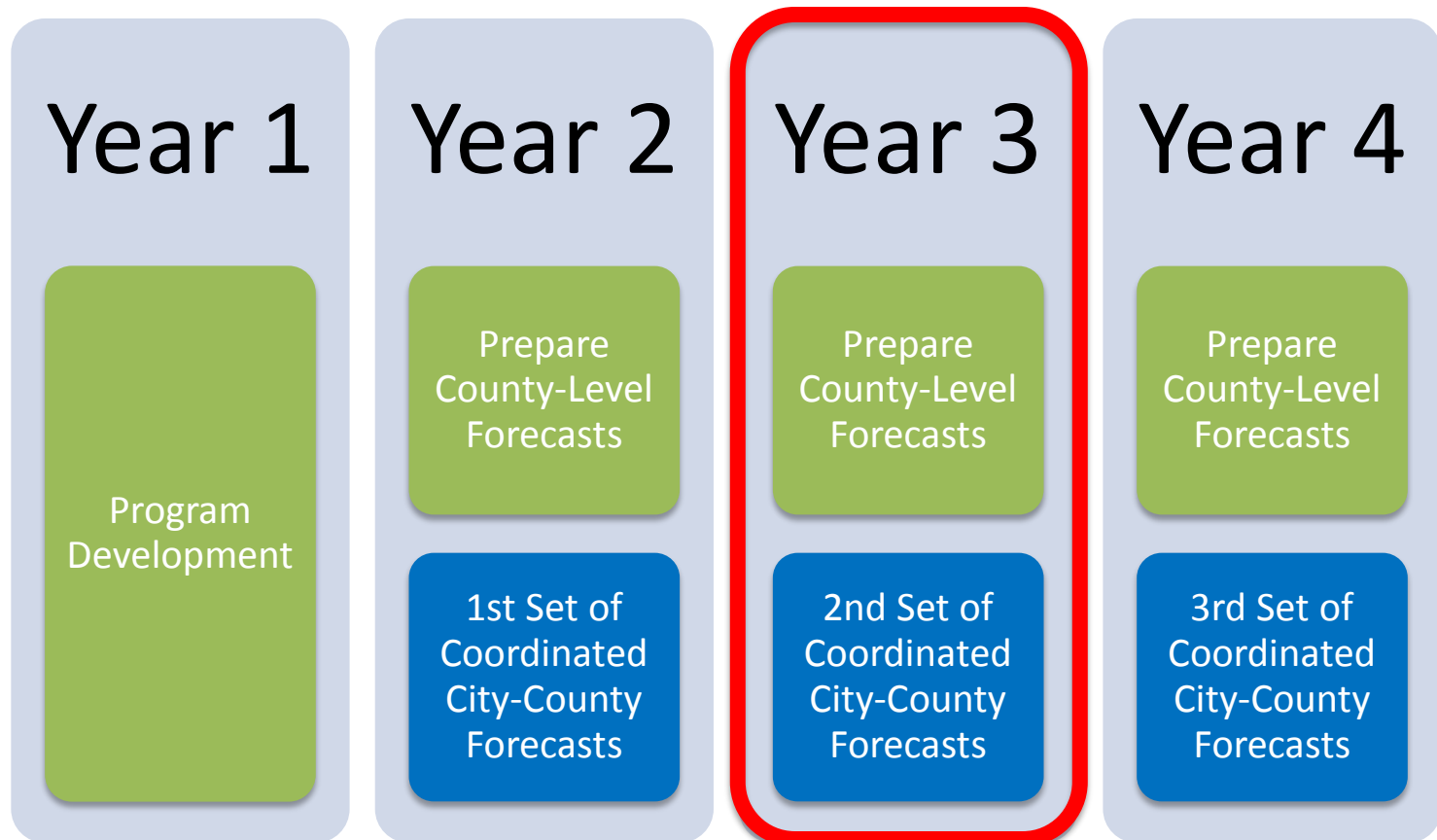
- Institute of Portland Metropolitan Studies
- Greater Portland Pulse
- Northwest Economic Research Center
- Neighborhood Profiles

PRC News:

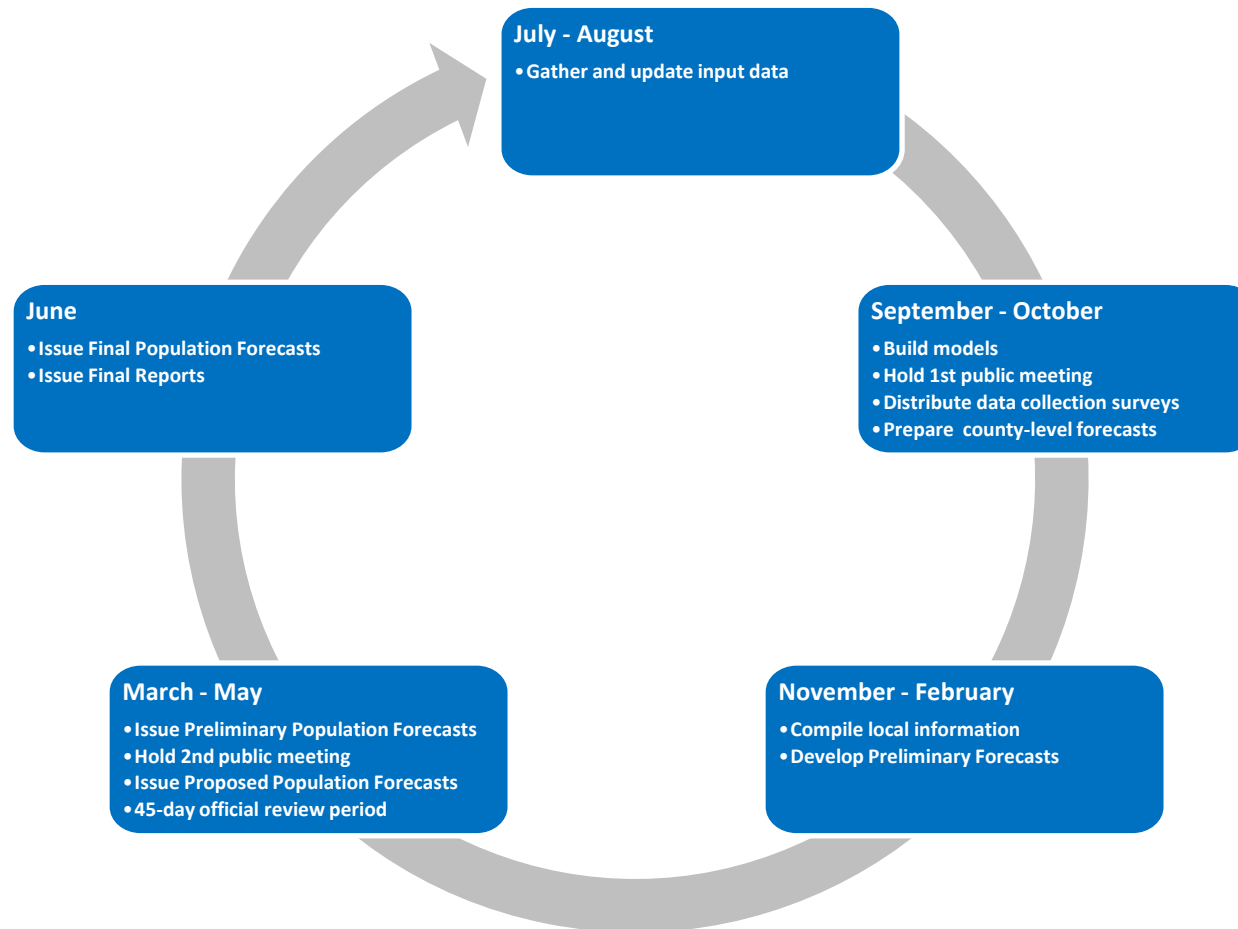
- The final forecasts for Region 1 are now available--click here for more information.
- PRC has been helping Washington County as it redraws the boundaries of its county commissioner districts. You can watch videos of Jason Jurjevich and senior deputy county administrator Walt Peck discussing the process here.



## Forecast Program: 4-Year Schedule



## Coordinated Forecast: Annual Schedule





## Deliverables

- Forecasts (50 year horizon, 5-year time intervals)
  - County-level forecasts (5-year age groups)
  - Coordinated UGB-level forecasts (Total population)
- Report containing:
  - Summaries of historic and future demographic trends, assumptions about future growth, and a compilation of information collected from city and county officials and the public
  - Short technical description of methods employed to produce the forecast

## Process for Population Forecasts

- Develop demographic models using historic and recent data
- Analyze past and current population trends
  - Reasons for change, continuous or short-term?
- Gather information about existing and planned future housing, and about population change
  - Housing developments
  - Construction of new group quarters facilities
  - New employers
- Make assumptions about future housing and population change
- Revise forecasts on a regular basis

## Population Forecast Methods

### Primary Models for this Forecast

- Cohort-Component Method
  - Based on age-sex structure
  - Survival rates – Fairly constant over time
  - Fertility – Slightly more variable than survival rates
  - Migration Rates – Subject to greater fluctuation than mortality and fertility and more unpredictable
  - Generally works better for areas with larger populations

## Population Forecast Methods

### Primary Models for this Forecast

- Housing Unit Method
  - Generally works better for areas with smaller populations
  - Housing unit growth
  - Housing unit type
  - Persons per household (PPH)
  - Occupancy rates
  - Add group quarters population

## Population Forecast Methods Other Models/Methods to Consider

- For comparison and to serve as a check
- Ratio Methods
- Trend Extrapolation
- Employment Conversion Model

## Population Forecast Data Sources

### **Primary Sources:**

- U.S. Census Bureau, Decennial Censuses
- Population Research Center (PRC), Oregon Population Estimates Program
- Oregon Health Authority, Center for Health Statistics
- Counties, Assessors Office
- Incorporated cities, Community Development/Planning Department
- Oregon Geospatial Enterprise Office (GEO), Spatial Data Library

### **Secondary Sources:**

- State of Oregon, Office of Economic Analysis
- U.S. Census Bureau, American Community Survey (ACS)
- U.S., Internal Revenue Service
- State of Oregon, Department of Revenue
- Oregon Department of Education
- U.S., Centers for Medicare and Medicaid Services
- State of Oregon, Employment Department

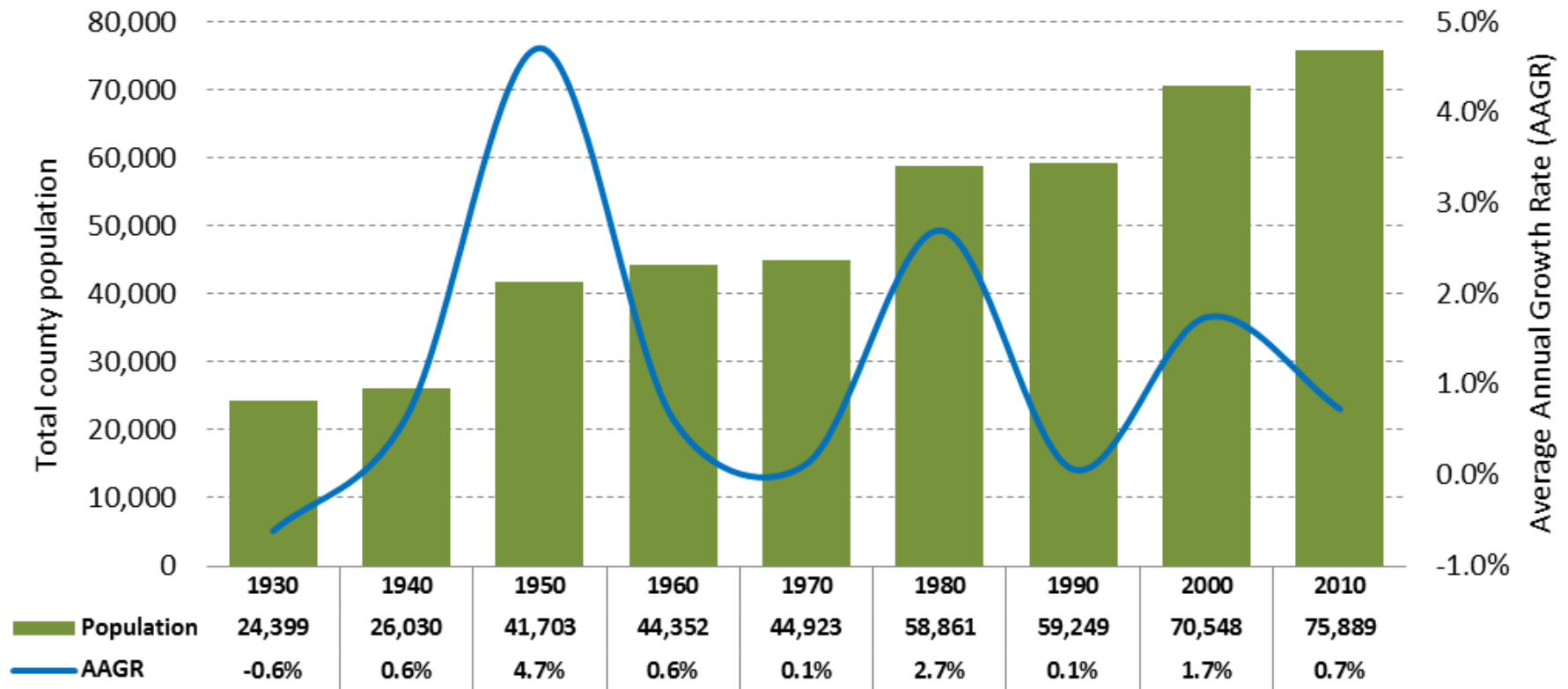
## Process for Local Input

- Hold regional meetings
  - Receive input on:
    - Historical and current demographic and economic trends
    - Plans for future growth
  - Receive feed back on Preliminary Forecasts
- Local survey
  - Collect local observations
    - Population composition; recent change
    - Planned housing development plus group quarters facilities
    - Future employers
    - Infrastructure
    - Anything that might promote or hinder population growth
  - Survey will be posted on website and emailed to each jurisdiction
  - Issued in October, 2015
- Official review period for Proposed Forecasts

## Umatilla County



**Umatilla County—Total Population by Ten-year Intervals (1930-2010)**

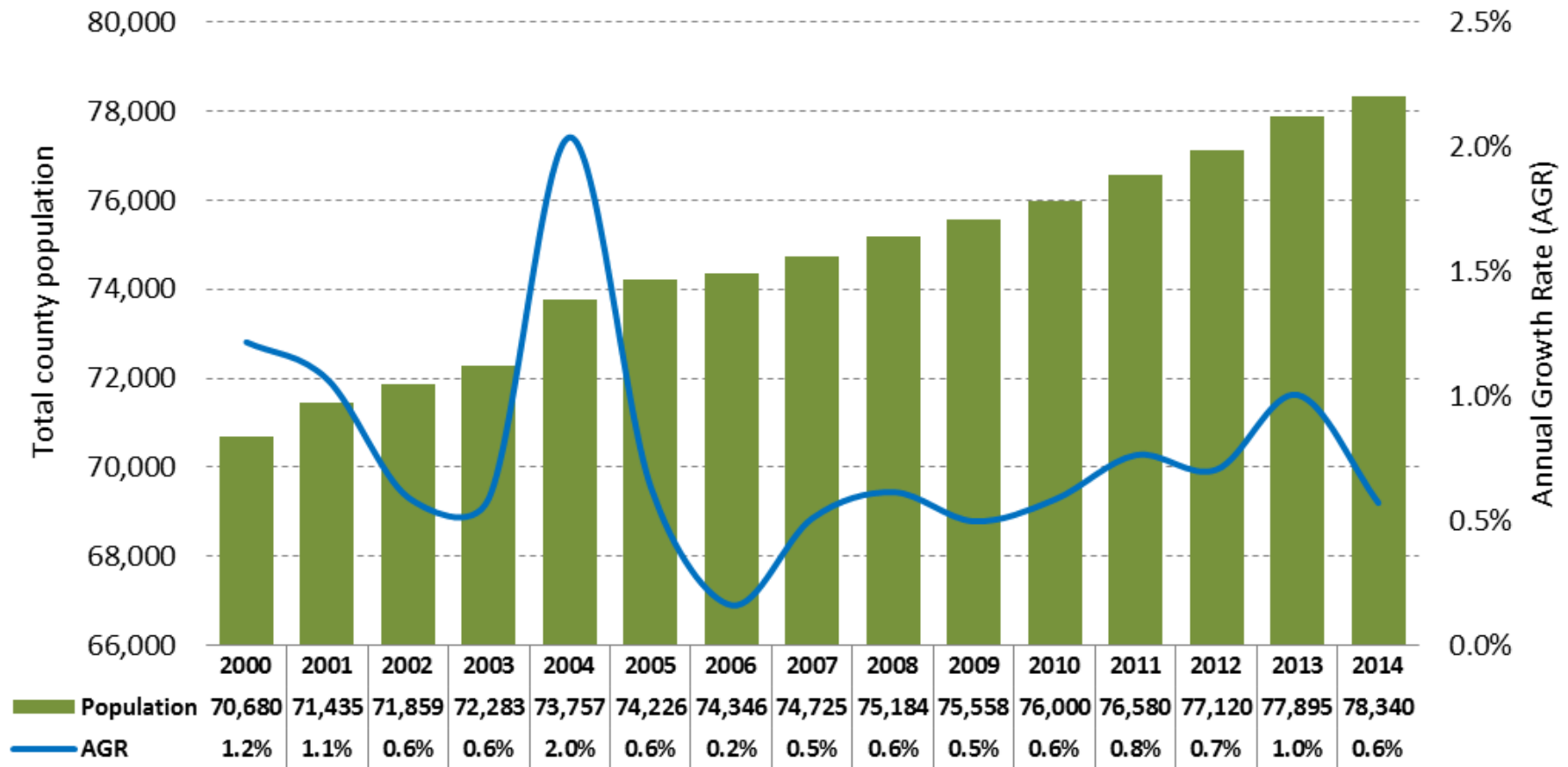


Sources: U.S. Census Bureau, 1930 to 2010 Censuses. Calculated by Population Research Center (PRC).

Note 1: Average annual growth rate is used for simplicity. In actuality the rate is an annualized rate calculated with this formula:  $[LN(Year1/Year2)/10]$

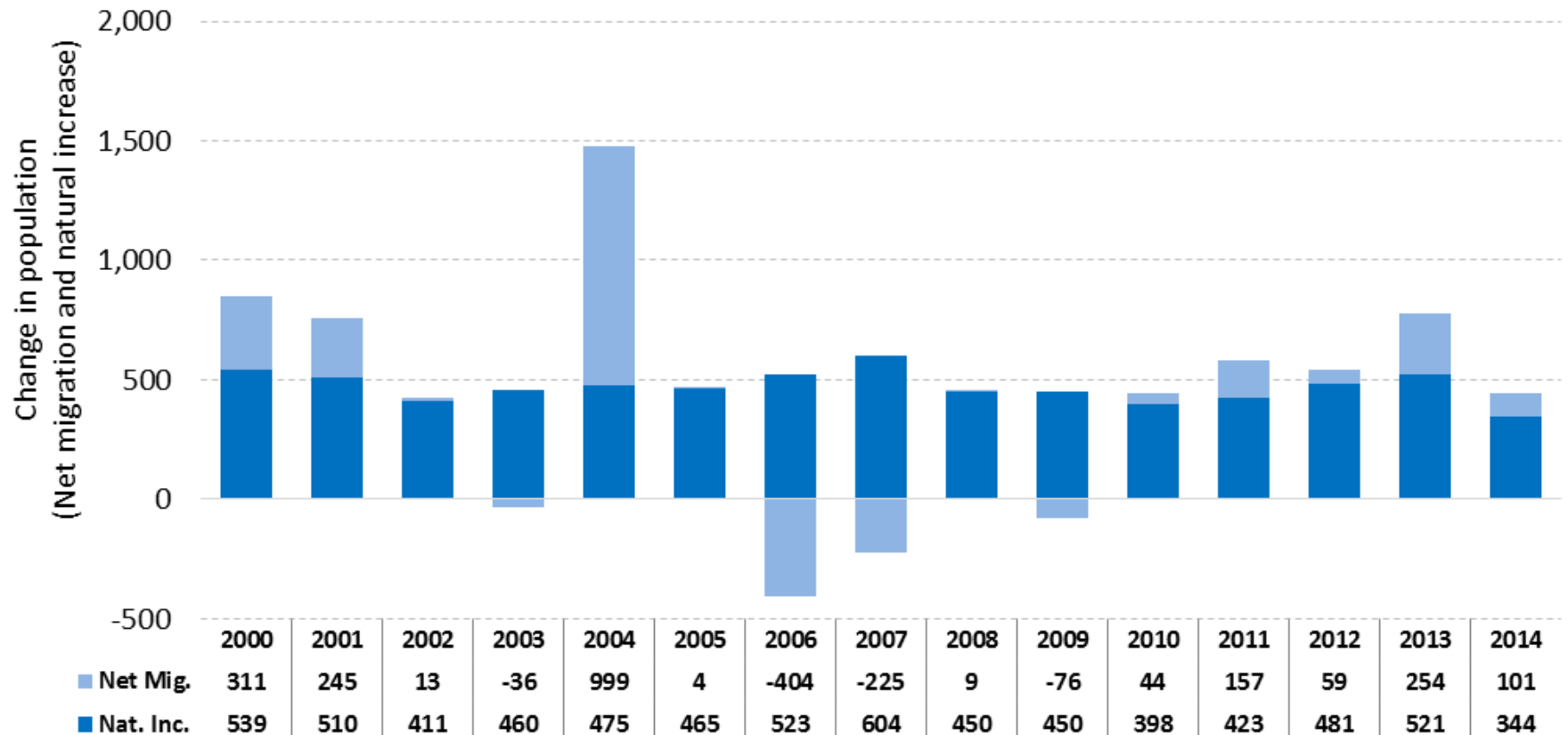
Note 2: The 2000 total population does not reflect Count Question Resolution (CQR) revisions made by the U.S. Census Bureau. Revised total population numbers are used for the "County and Incorporated City Population" table.

**Umatilla County—Annual Total Population Trend (2000-2014)**



Sources: Population Research Center (PRC), July 1st Annual Estimates 2000 to 2014.

**Umatilla County—Components of Population Change (2000-2014)**



Sources: Population Research Center, July 1st Annual Estimates 2000-2014. Oregon Health Authority, Center for Health Statistics. Calculated by Population Research Center (PRC).

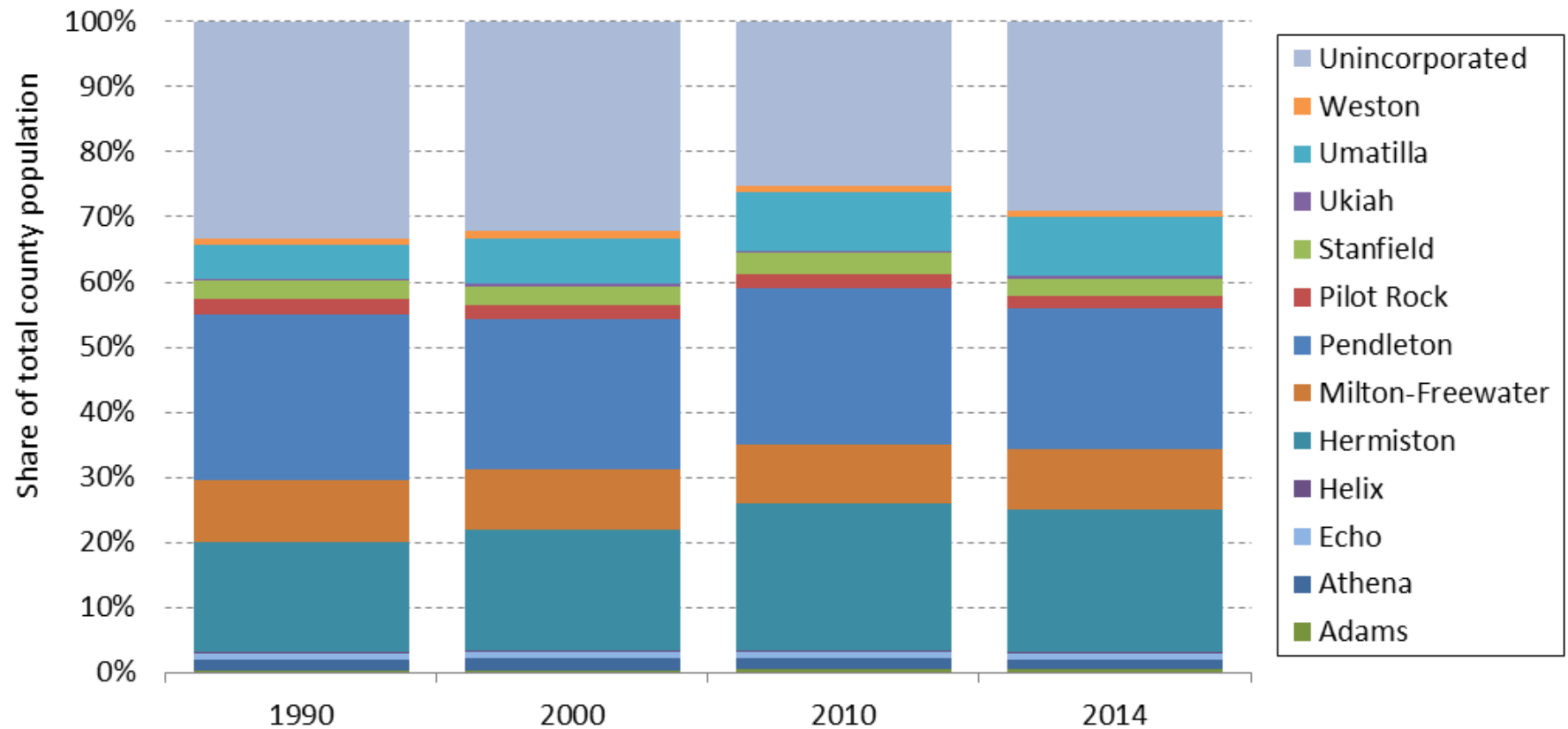
## Umatilla County and Incorporated Cities—Population and Average Annual Growth Rate (AAGR) (2000-2010 and 2010-2014)

	2000	2010	2014	AAGR (2000-2010)	AAGR (2010-2014)	Share of County 2000	Share of County 2010	Share of County 2014
<i>Umatilla County</i>	<i>70,548</i>	<i>75,889</i>	<i>78,340</i>	<i>0.7%</i>	<i>0.8%</i>	<i>100.0%</i>	<i>100.0%</i>	<i>100.0%</i>
Adams	297	350	370	1.6%	1.4%	0.4%	0.5%	0.5%
Athena	1,221	1,126	1,125	-0.8%	0.0%	1.7%	1.5%	1.4%
Echo	650	699	705	0.7%	0.2%	0.9%	0.9%	0.9%
Helix	183	184	195	0.1%	1.5%	0.3%	0.2%	0.2%
Hermiston	13,154	16,745	17,345	2.4%	0.9%	18.6%	22.1%	22.1%
Milton-Freewater	6,470	7,050	7,060	0.9%	0.0%	9.2%	9.3%	9.0%
Pendleton	16,354	16,612	16,700	0.2%	0.1%	23.2%	21.9%	21.3%
Pilot Rock	1,532	1,502	1,505	-0.2%	0.0%	2.2%	2.0%	1.9%
Stanfield	1,979	2,043	2,115	0.3%	0.9%	2.8%	2.7%	2.7%
Ukiah	255	186	245	-3.2%	6.9%	0.4%	0.2%	0.3%
Umatilla	4,978	6,906	7,050	3.3%	0.5%	7.1%	9.1%	9.0%
Weston	717	667	685	-0.7%	0.7%	1.0%	0.9%	0.9%
Unincorporated	22,758	21,819	23,240	-0.4%	1.6%	32.3%	28.8%	29.7%

Sources: U.S. Census Bureau, April 1, 2000 and 2010 Censuses. Population Research Center, July 1, 2014 Annual Intercensal Estimate. Calculated by Population Research Center (PRC).

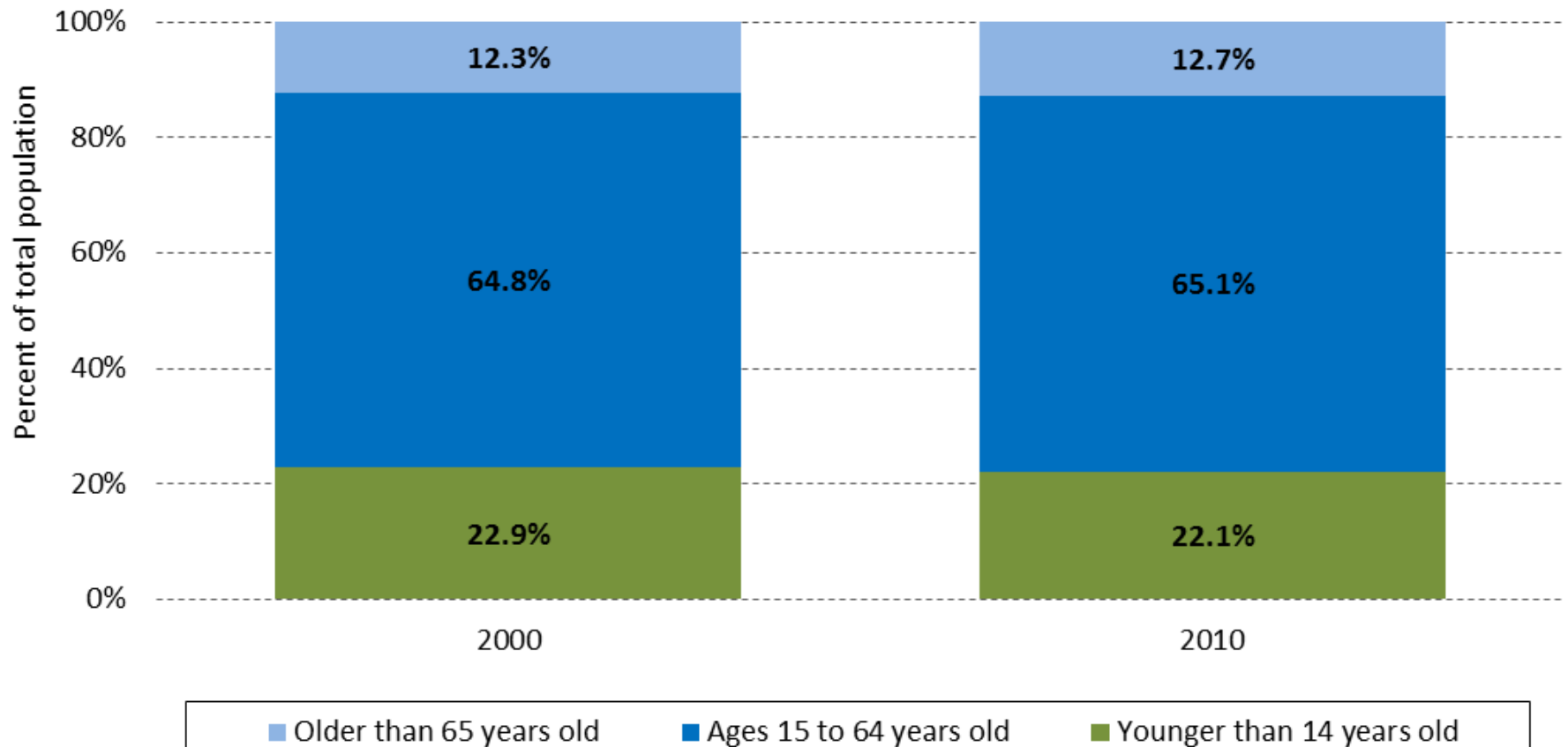
Note: The 2000 total population reflects Count Question Resolution (CQR) revisions made by the U.S. Census Bureau.

**Umatilla County—City Share of Population**



Sources: U.S. Census Bureau, April 1, 1980, 1990, 2000, and 2010 Decennial Censuses. Population Research Center, July 1, 2014 Annual Certified Population Estimate. Calculated by Population Research Center (PRC).

**Umatilla County—Age Structure of the Population (2000 and 2010)**



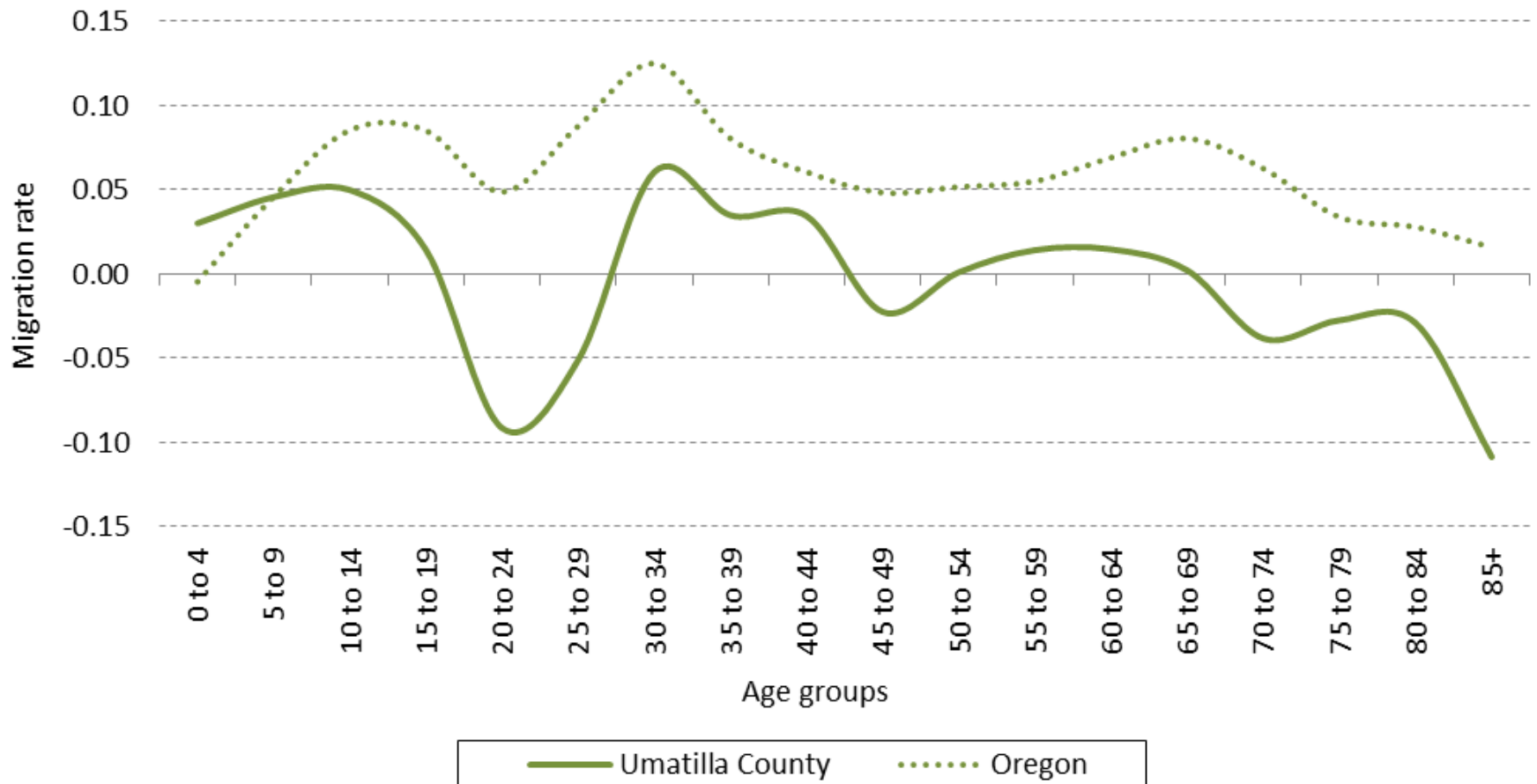
Sources: U.S. Census Bureau, 2000 and 2010 Censuses. Calculated by Population Research Center (PRC).

**Umatilla County—Age Structure of the Population (2000 and 2010)**



Sources: U.S. Census Bureau, 2000 and 2010 Censuses. Calculated by Population Research Center (PRC).

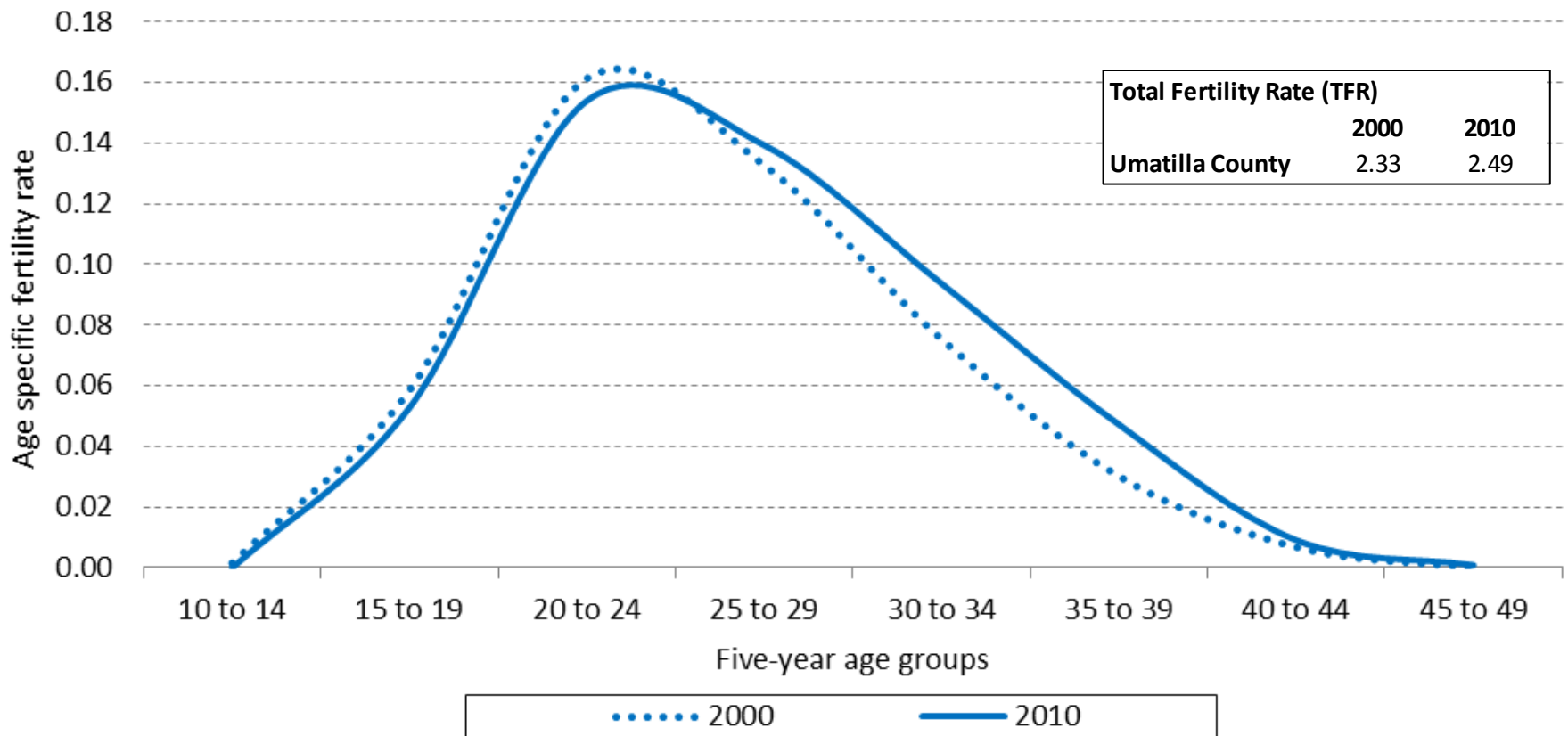
**Umatilla County and Oregon—Age Specific Migration Rates (2000 to 2010)**



Sources: U.S. Census Bureau, 2000 and 2010 Censuses. Calculated by Population Research Center (PRC).

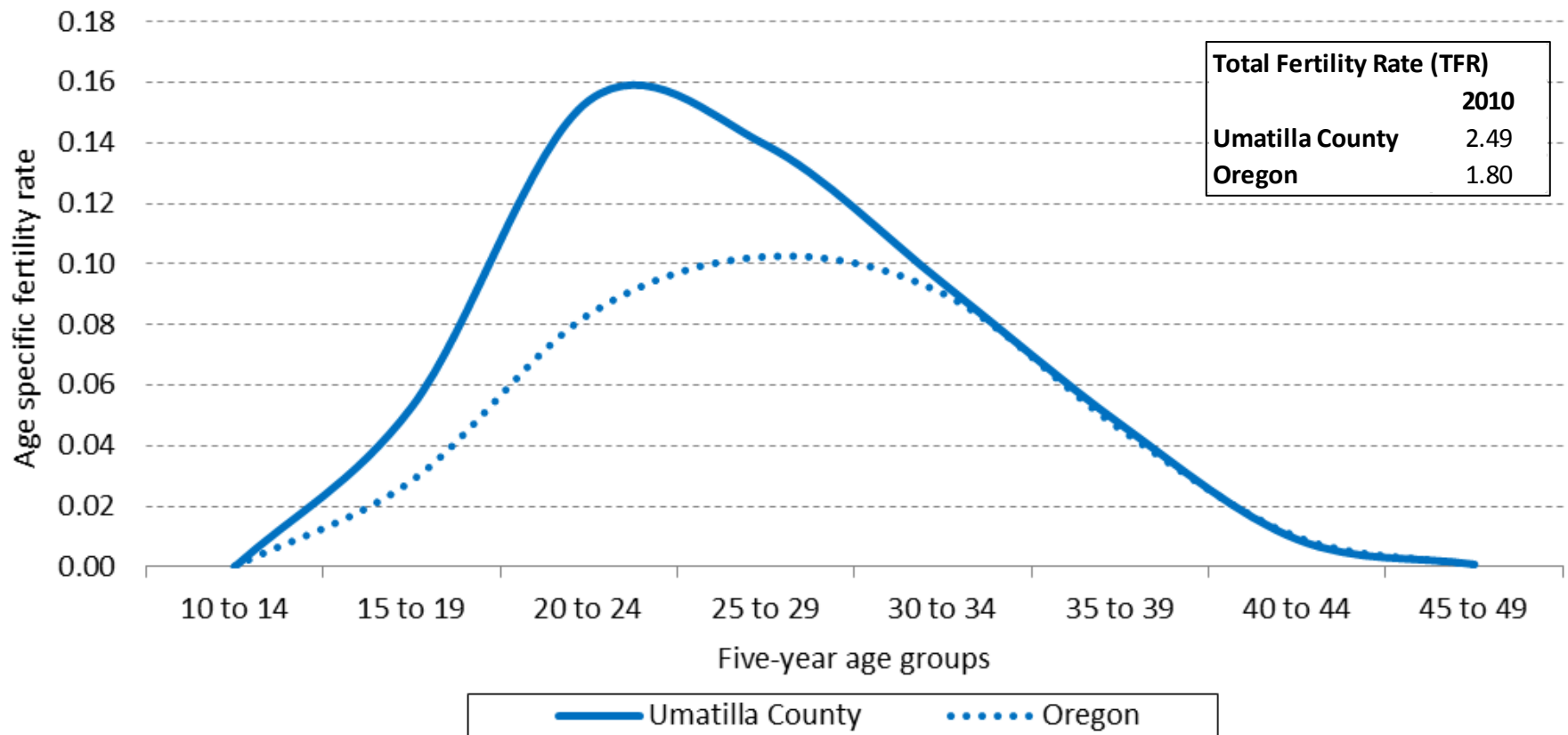


**Umatilla County—Age Specific Fertility Rates (2000 and 2010)**



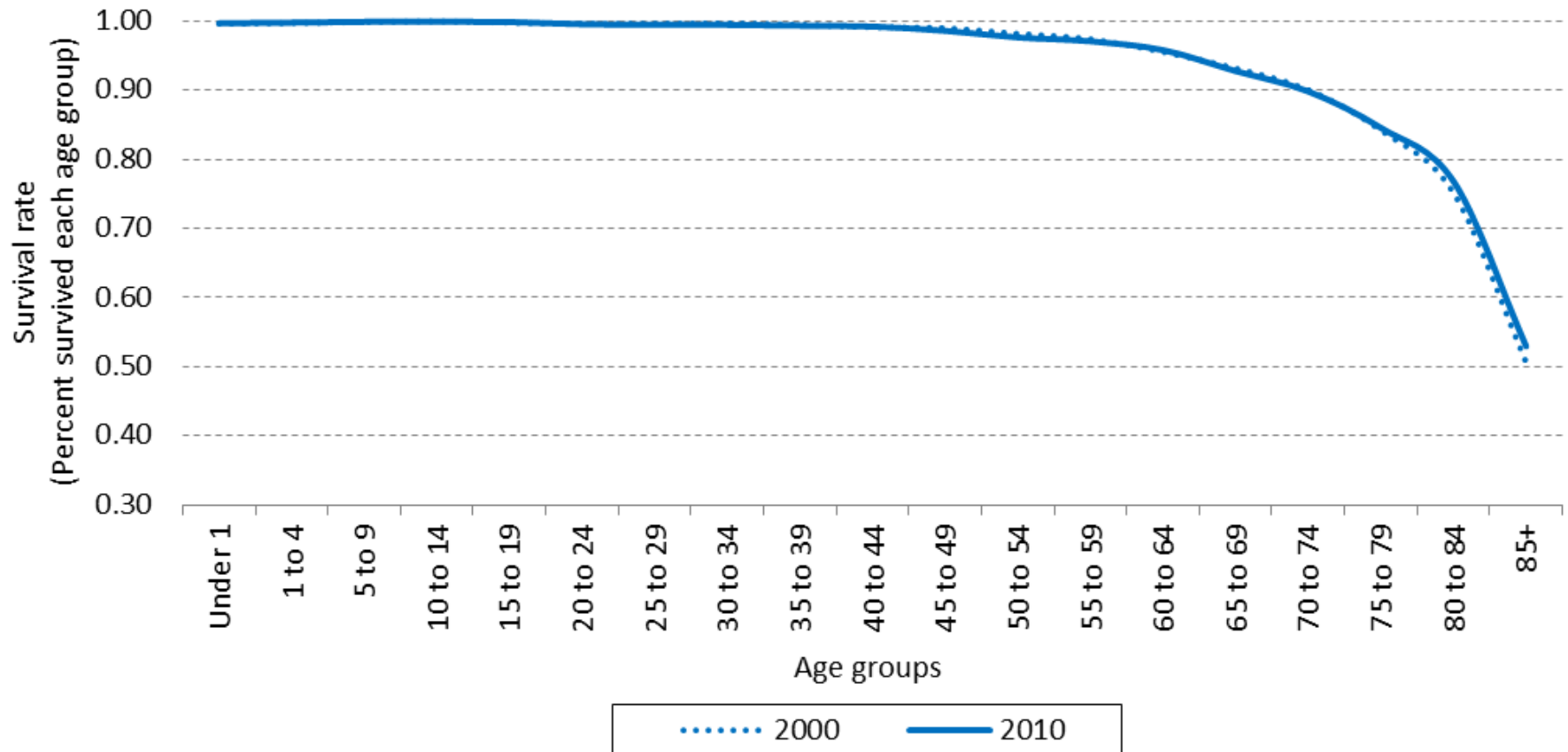
Sources: U.S. Census Bureau, 2000 and 2010 Censuses. Oregon Health Authority, Center for Health Statistics. Calculated by Population Research Center (PRC).

Umatilla County and Oregon—Age Specific Fertility Rates (2010)

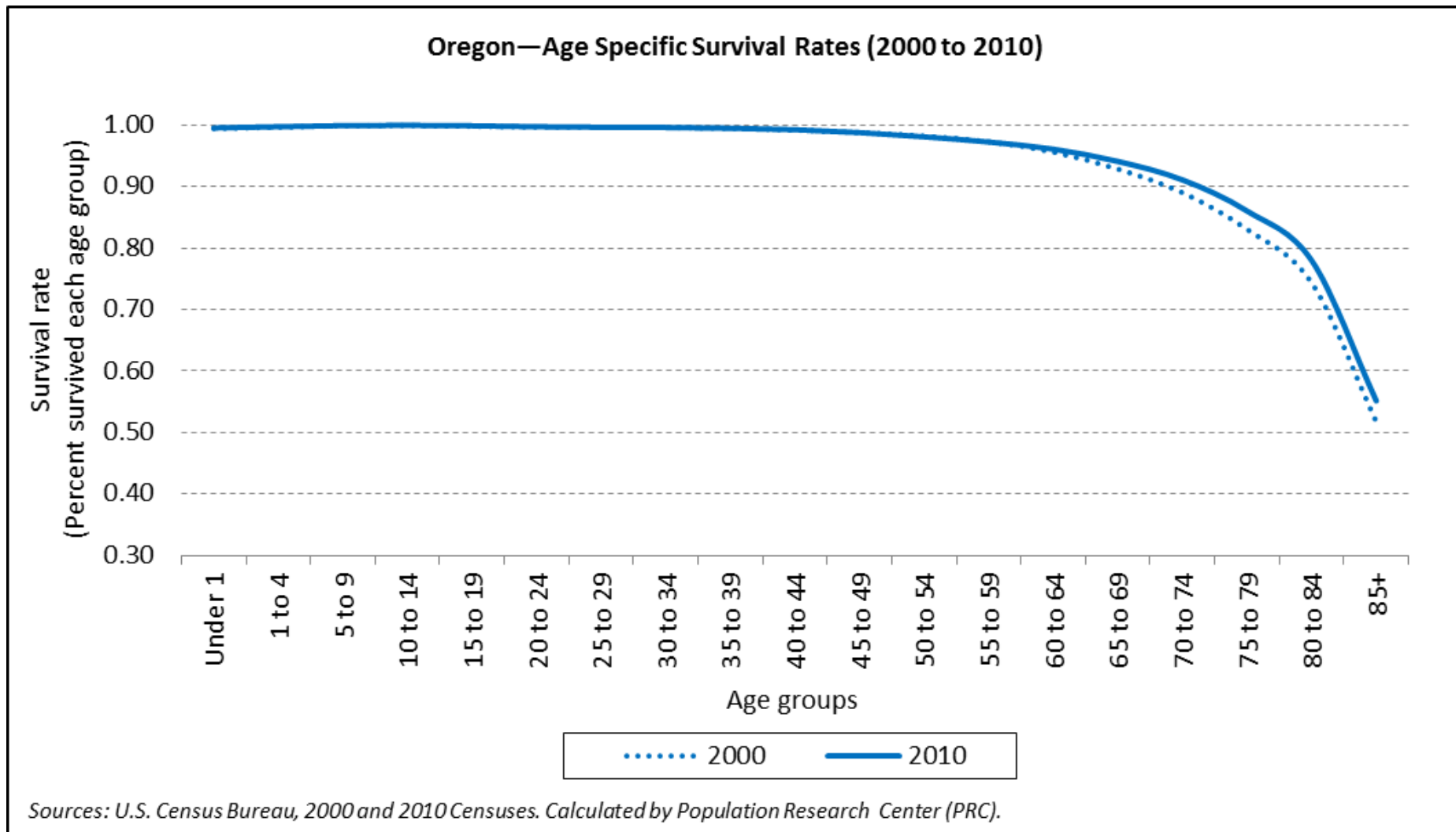


Sources: U.S. Census Bureau, 2010 Census. Oregon Health Authority, Center for Health Statistics. Calculated by Population Research Center (PRC).

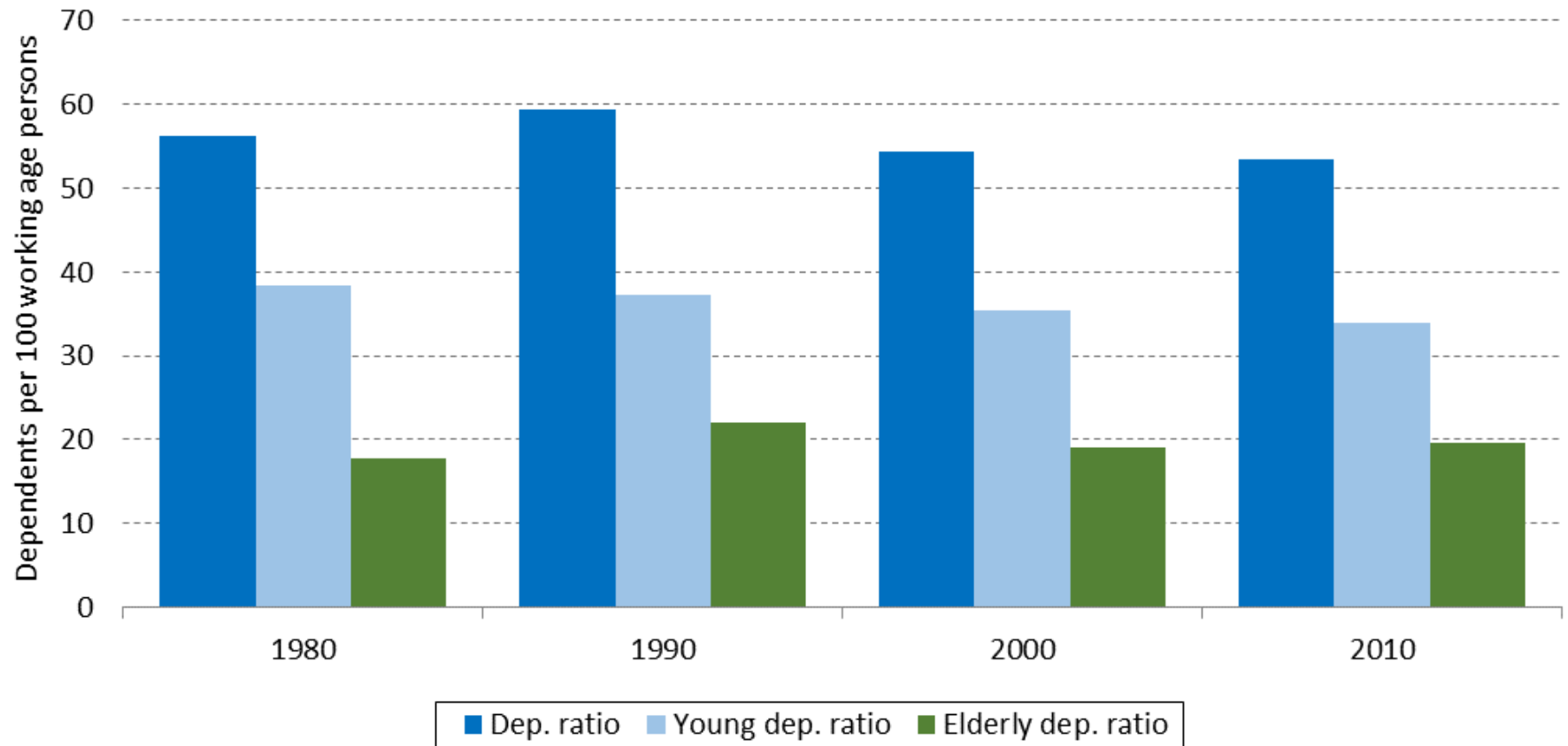
Umatilla County—Age Specific Survival Rates (2000 to 2010)



Sources: U.S. Census Bureau, 2000 and 2010 Censuses. Calculated by Population Research Center (PRC).



**Umatilla County—Dependency Ratio**



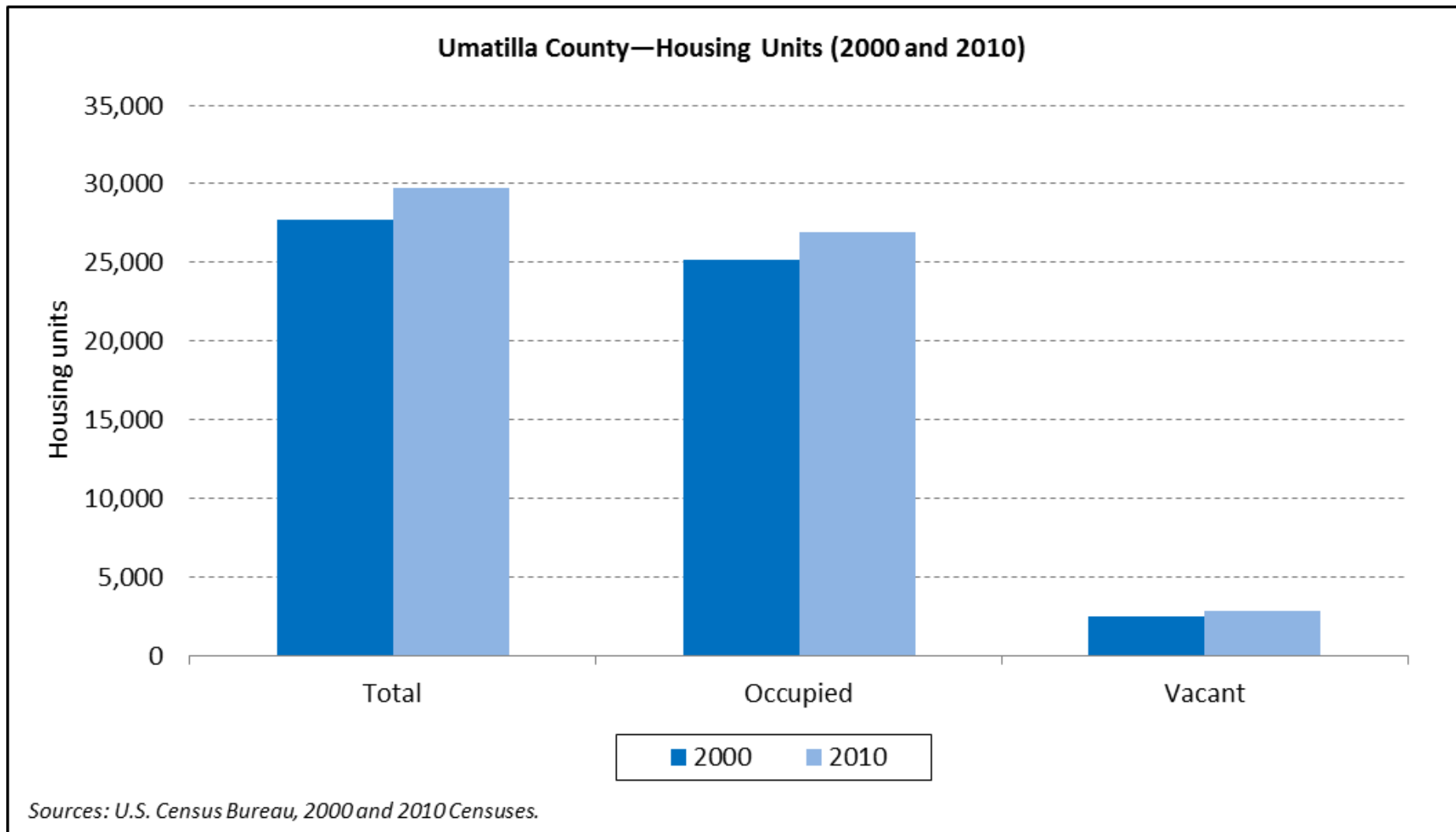
Sources: U.S. Census Bureau, 1980, 1990, 2000, and 2010 Censuses. Calculated by Population Research Center (PRC).

Note: Dependency Ratio =  $\{[(\text{Population Age 0-14}) + (\text{Population Age 65 or older})] / (\text{Population Age 15-64})\} \times 100$

## Umatilla County—Hispanic or Latino and Race (2000 and 2010)

Hispanic or Latino and Race	2000		2010		Absolute Change	Relative Change
<i>Total population</i>	70,548	100.0%	75,889	100.0%	5,341	7.6%
Hispanic or Latino	11,366	16.1%	18,107	23.9%	6,741	59.3%
Not Hispanic or Latino	59,182	83.9%	57,782	76.1%	-1,400	-2.4%
White alone	54,670	77.5%	52,691	69.4%	-1,979	-3.6%
Black or African American alone	535	0.8%	557	0.7%	22	4.1%
American Indian and Alaska Native alone	2,258	3.2%	2,383	3.1%	125	5.5%
Asian alone	518	0.7%	626	0.8%	108	20.8%
Native Hawaiian and Other Pacific Islander alone	51	0.1%	95	0.1%	44	86.3%
Some Other Race alone	118	0.2%	55	0.1%	-63	-53.4%
Two or More Races	1,032	1.5%	1,375	1.8%	343	33.2%

Sources: U.S. Census Bureau, 2000 and 2010 Censuses.



## Umatilla and Incorporated Cities—Persons Per Household (PPH), Occupancy Rate, Percent Group Quarters, and Percent Seasonal Housing (2000 and 2010)

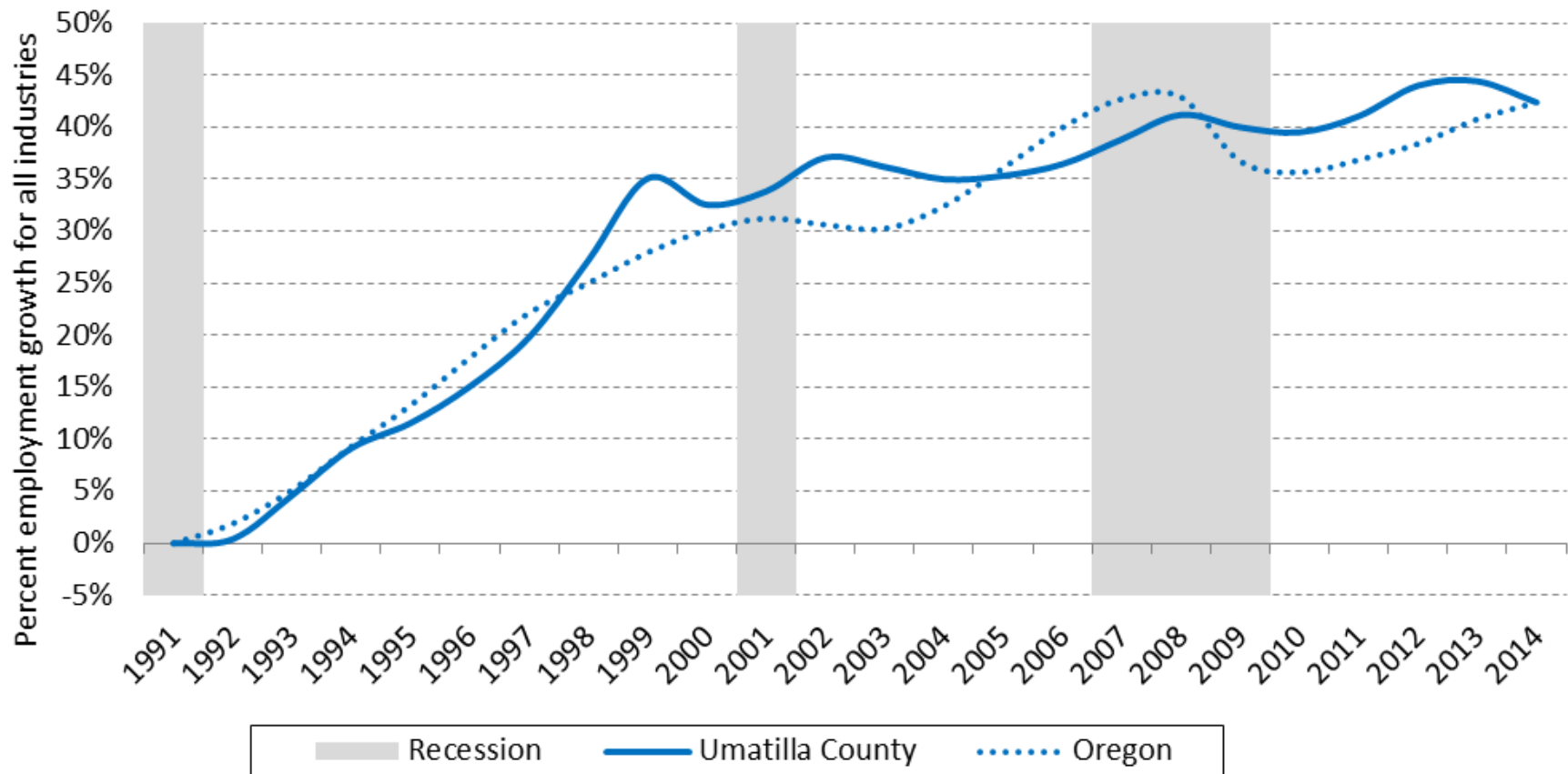
	Persons Per Household (PPH)		Occupancy Rate		Percent Seasonal Housing		Percent Group Quarters	
	2000	2010	2000	2010	2000	2010	2000	2010
<i>Umatilla County</i>	2.7	2.7	91.0%	90.6%	2.5%	3.0%	4.7%	5.3%
Adams	2.8	2.6	89.8%	94.3%	1.7%	0.7%	1.7%	0.0%
Athena	2.7	2.5	94.3%	92.1%	0.4%	0.8%	0.1%	0.2%
Echo	2.7	2.9	95.2%	95.7%	1.6%	0.4%	1.1%	0.0%
Helix	3.0	3.4	91.2%	80.9%	2.9%	0.0%	0.0%	0.0%
Hermiston	2.6	2.7	92.2%	94.9%	0.4%	0.6%	0.8%	0.9%
Milton-Freewater	2.8	2.8	89.3%	90.4%	0.3%	0.3%	4.3%	0.9%
Pendleton	2.4	2.4	93.9%	91.5%	0.5%	0.8%	12.9%	11.3%
Pilot Rock	2.6	2.6	93.7%	89.7%	0.0%	0.8%	0.0%	0.0%
Stanfield	3.0	3.0	92.6%	92.8%	0.0%	0.5%	0.0%	0.0%
Ukiah	2.5	2.1	77.4%	64.8%	12.9%	23.0%	5.1%	10.2%
Umatilla	3.1	3.2	90.3%	92.5%	0.8%	1.0%	14.0%	25.4%
Weston	2.7	2.7	94.6%	93.0%	0.0%	1.1%	0.0%	0.0%
Unincorporated	2.8	2.7	88.5%	86.7%	6.6%	7.8%	0.4%	0.6%

Sources: U.S. Census Bureau, 2000 and 2010 Censuses. Calculated by Population Research Center (PRC).

Note: Percent Seasonal Housing is the proportion of total housing units in 2000 and 2010 that are identified as vacant “for seasonal, recreational, or occasional use.”

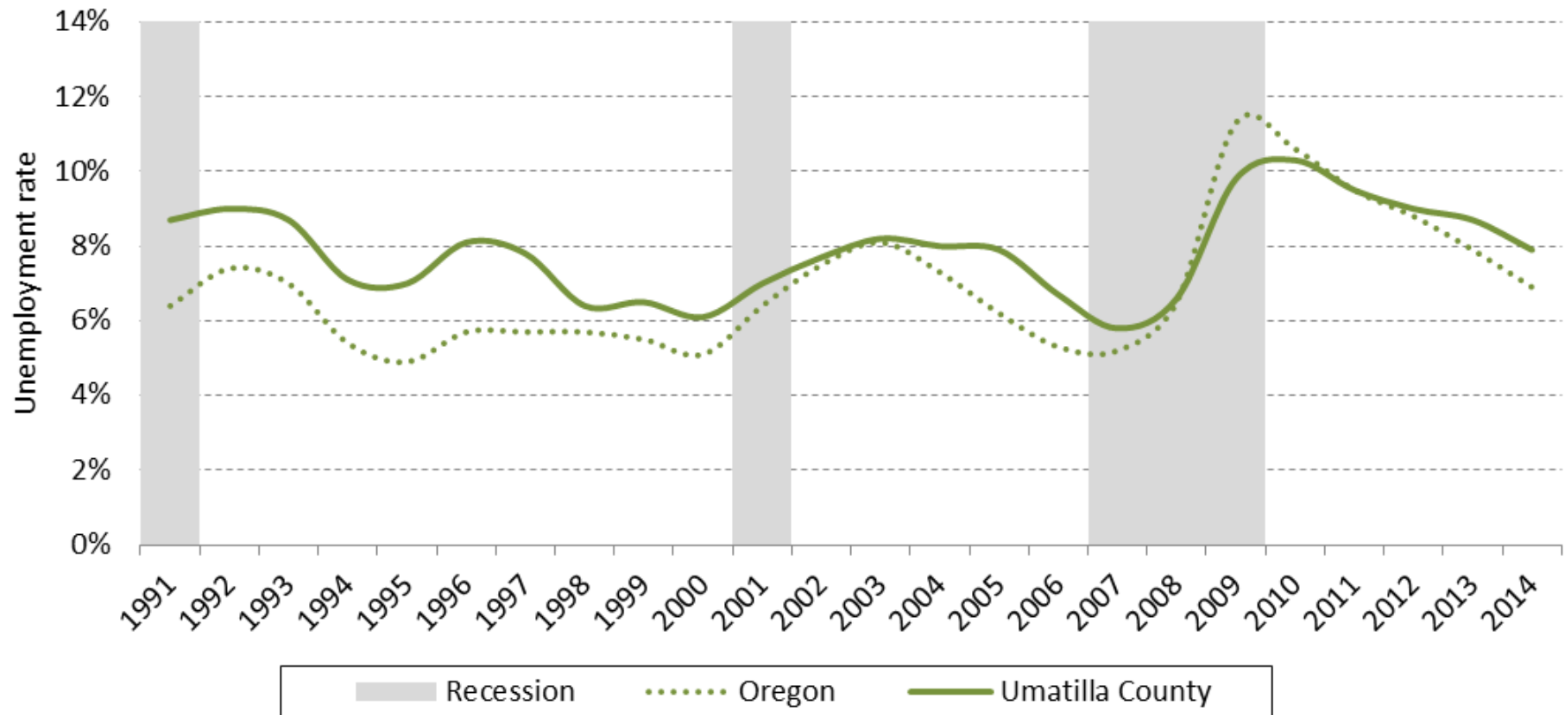


Umatilla County—Employment Growth since 1991



Source: U.S. Census Bureau. 2013. Quarterly Workforce Indicators (QWI) Data. Longitudinal-Employer Household Dynamics Program. <http://ledextract.ces.census.gov/>. Calculated by Population Research Center (PRC).

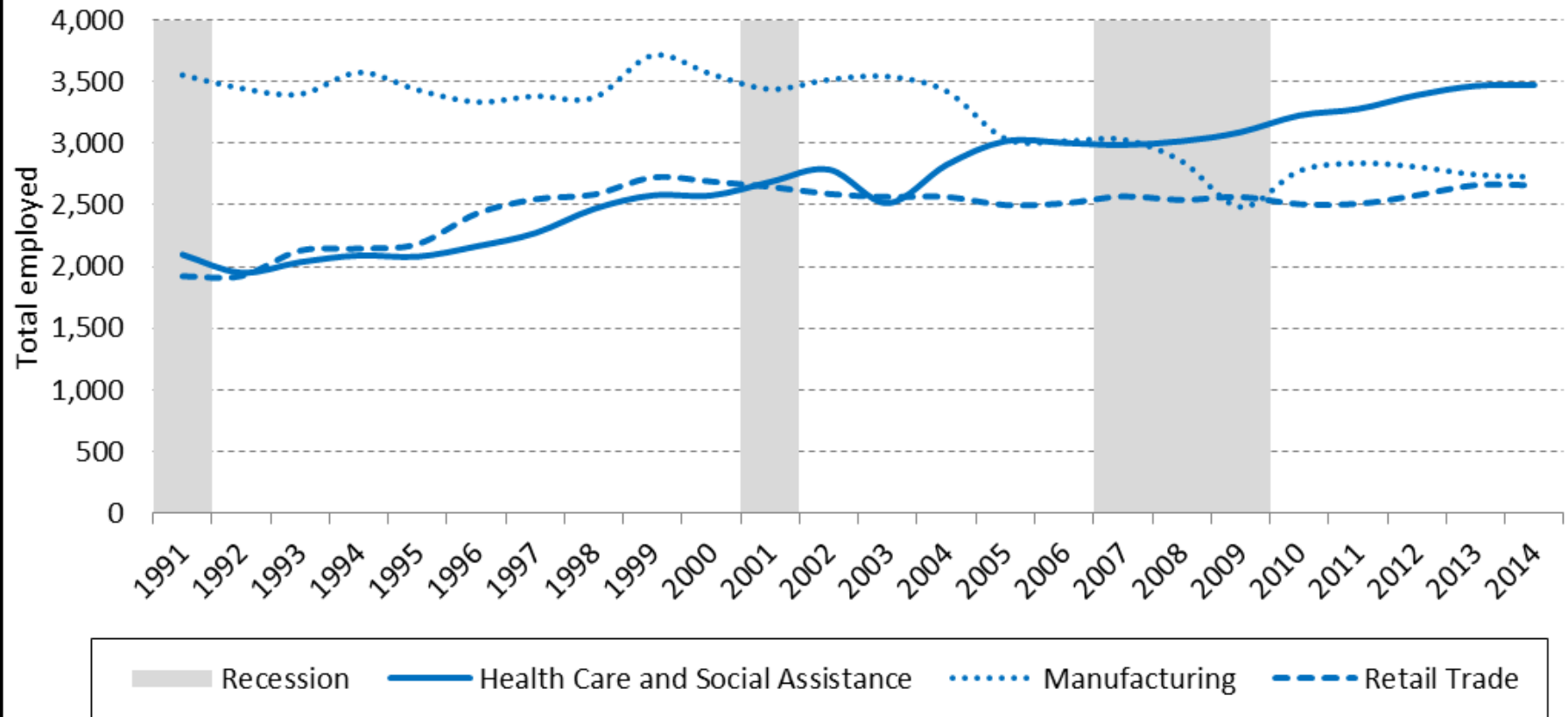
**Umatilla County and Oregon—Annual Unemployment Rate (1991 to 2014)**



Source: Oregon Employment Department. Local Area Unemployment Statistics (LAUS). <https://www.qualityinfo.org/education/?at=1&t1=4101000000~unemprate~y~2000~2015>.

Note: The rate represents the percent of the labor force seeking work but not employed.

**Umatilla County—Top Three Industries by Average Quarterly Employment in 2014**



Source: U.S. Census Bureau. 2013. Quarterly Workforce Indicators (QWI) Data. Longitudinal-Employer Household Dynamics Program. <http://ledextract.ces.census.gov/>. Calculated by Population Research Center (PRC).  
Note: The quarterly employment data used in this chart is not seasonally adjusted.

# Local Input and Additional Information

- Questions?
- Discussion time