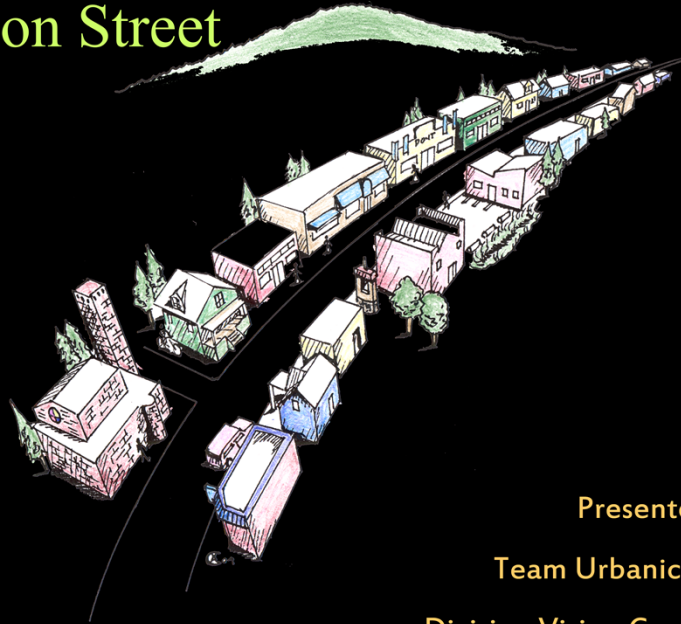


Sustainable Options for Division Street



Presented by
Team Urbanics and
Division Vision Coalition

Team Urbanics

Matt Burlin – Bill Hawley – Alisa Kane – David Moser – Dana Visse

- Masters of Urban and Regional Planning
- Community Development, Environmental, and Land Use Planners
- Long-time Portland Residents
- Neighbors

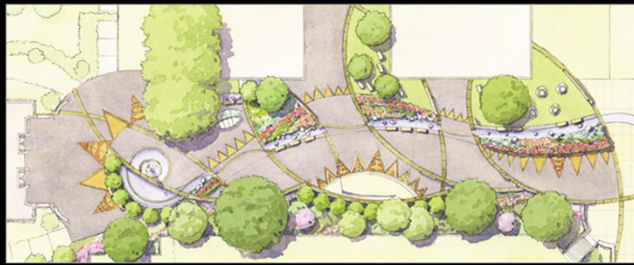
Focus of this workshop

- Upcoming changes
- Some concerns about where Division is headed
- Some confusion about what's going on
- Some uncertainty about how to get involved



Our Role....

- Share what we've learned
- Get you in contact with experts involved in the planning process
- Generate discussion within the Division Street community



Workshop Goals

- Get background on the upcoming plans for Division Street
- Become engaged in the planning process
- Familiarize yourself with the language
- Practice visualizing a sustainable street
- Learn options for a sustainable intersection
- Meet your neighbors!

Background

- Oregon Solutions
 - February until May 2003
 - Application for Transportation Growth Management Grant
- Division Main Street / Green Street Project
 - July 2004 until June 2005
 - Planning, Southeast 11th – 60th
- Metropolitan Transportation Improvement Project
 - 2007-2009
 - Repair and Construction, Southeast 6th – 39th

Transportation Growth Management Project Priorities

- Transit
- Delivery of goods
- Good pedestrian access
- Good mobility
- An overall balance of modes



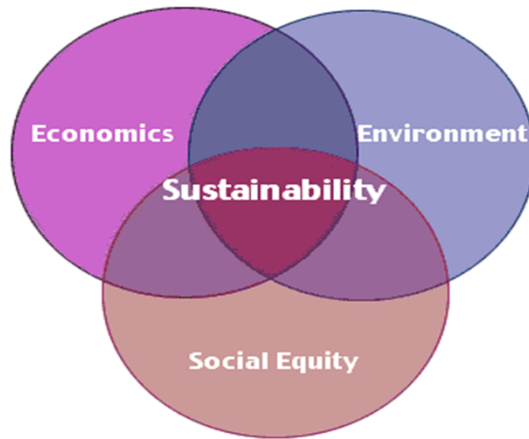
Local Government Agencies

- Metro Regional Government
- Oregon Department of Transportation
- Portland Office of Transportation
- Bureau of Planning
- Bureau of Development Services
- Bureau of Environmental Services
- Office of Sustainable Development
- Office of Neighborhood Involvement
- Tri-Met

All will be involved in the steering committee

"The Three Es"

© 2004 Team Urbanics - Portland State University,



We're going to look at the term sustainability. What does it mean? What does it mean to us?

Scope of Sustainability

Water / ground

Street

People

Business

Community

Watershed

Many layers of the environment, each with it's own version of sustainability. Policy and planning have several similarities and conflicts within each layer. Layers impact each other.

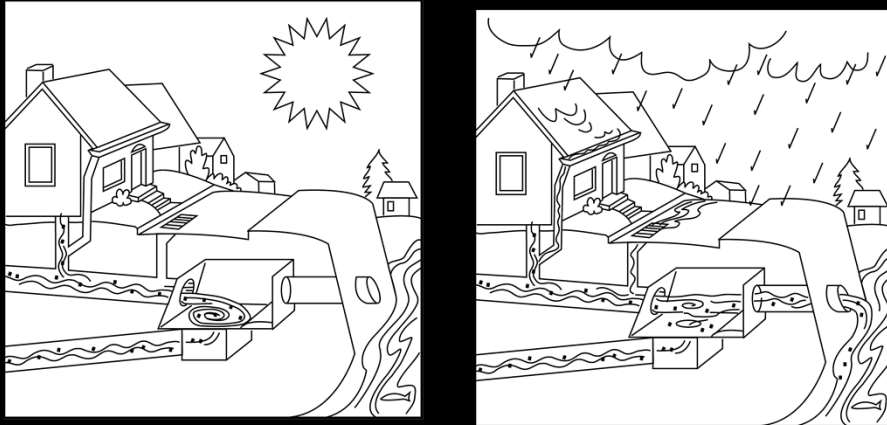
Sustainable options

- Stormwater
- Transportation
- Business
- Public Realm
- Civic Engagement



Stormwater is the main issue in Portland. The Willamette River has served as a drainage basin for pollutants from the development of our city. The concept of a “fish and swim” river is still within reach, but a variety of issues need to be addressed for this to occur.

Combined Sewer Overflows (CSOs)



During heavy storm periods, sewers may become overloaded because of the high volume of surface runoff. To avoid flooding, the excess water overflows from the sewer system through relief structures called **combined sewer overflows (CSOs)**.

Considerations

- No connection between source of pollution and drainage to the river
- Education of water consumption and conservation
- Connection between residents and river



Sustainable Options for Stormwater



Sustainable Options for Stormwater

Ecoroofs



Stephen's Creek Kiosk



Multnomah County Building

What are ecoroofs?

Sustainable Options for Stormwater

Bioswales



St. John's Water Pollution Control Lab

What are bioswales?

Sustainable Options for Stormwater

Stormwater Planters



Portland State's Epler Hall

Sustainable Options for Stormwater

Downspout Disconnection



Division Street business

City incentive for residential \$53 per downspout

Sustainable Options for Stormwater

Porous Pavement



Multnomah Center, Southwest Portland

Examples of this on Division Street
COSTS?



Mention green streets → transportation



Division Street Corridor includes four main neighborhoods

How would you describe rush hour traffic during rush hour?

Multiple modes of transit create a very busy place during rush hour.

Considerations

- Peak traffic flow very high
- Dangerous traffic speeds
- Unsafe pedestrian environment
- Multiple conflicts with narrow right-of-way
- On-street parking



Sustainable Options for Transportation



Walking—and active, friendly streets—are part of Portland’s famed livability. Portland earned this reputation by recognizing that a livable community is one where people walk. City leaders have placed a priority on creating places where pedestrians are safe and comfortable, where the streets and sidewalks are full of people and activity and where the presence of people deters inappropriate activities such as crime and vandalism.

It takes more than just good sidewalks to ensure an active street life—it requires attention to all the elements in the right of way, such as landscaping, lighting, traffic speed, transit, crosswalks, bicycles and paving materials.

Sustainable Options for Transportation

Curb Extensions



Northeast 18th and Alberta

Sustainable Options for Transportation

Traffic Circles



SE Clinton Street

Traffic calming / connection with nature

Sustainable Options for Transportation

Crosswalks



SE 31st and Division

Sustainable Options for Transportation

Bike lanes and accommodations



Safe bike lanes increase ridership and lessen auto-dependency

Sustainable Options for Transportation

Integration



On street parking with sustainable treatments. Trans is complicated because of Main Street, multi-modality



Sense of place, pedestrian friendly, and an
active community....

... positive things for business!



Considerations

- A strong local economy
- Integration of business community and sustainable development
- Property acquisition
- Property ownership



Sustainable Options for Business

Business Associations



Sustainable Options for Business

Gateways and
Sense of Place



Sustainable Options for Business

Unifying Theme



Sustainable Options for Business

Ordinance Variations



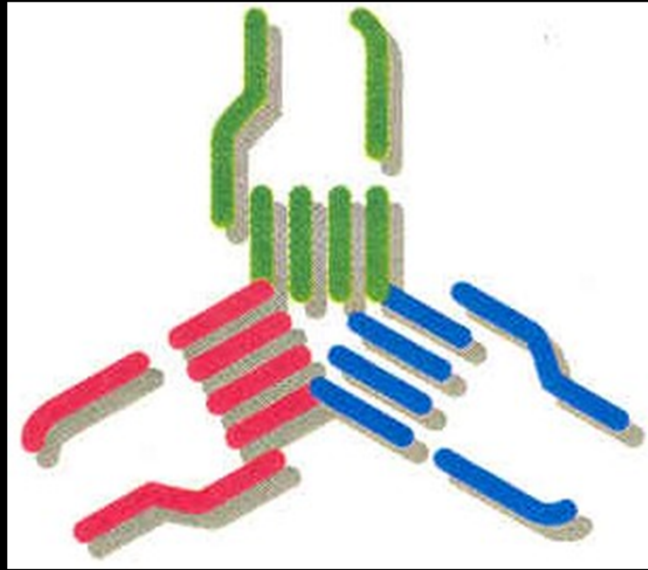
Sustainable Options for Business

Local Green Economy

- Cooperative recycling programs
- Division Brown Bags..
- Water and energy reduction certification program.
- Division Dollars?



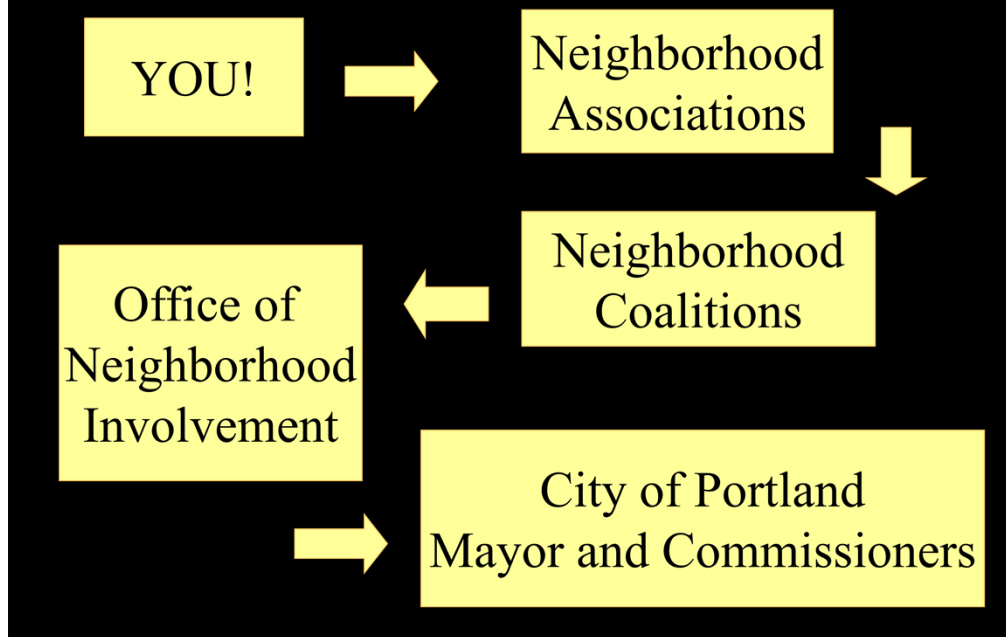
Civic Engagement



Community:

- Neighborhood Associations – Richmond, Hosford-Abernethy, Mount Tabor, South Tabor
- Division / Clinton Business Associations
- Division Vision Coalition
- Southeast Uplift
- Religious institutions
- Schools
- Many more.....

How can you make a difference?



What's important is how you can make a difference.

Considerations

- Evolving participation process for the Division Corridor
- Community / government communication
- “Language” barrier between community and governing agencies
- Government agencies communication



Sustainable Options for Civic Engagement

Envision



St Philip Neri Bioswale



Sunnyside Piazza

Sustainable Options for Civic Engagement

Education and Storytelling



Sustainable Options for Civic Engagement

Get Involved



Sustainable Options for Civic Engagement

Stay Informed

free

community workshop

Sustainable Options for Division Street

Presented by
PSU graduate students
& Division Vision Coalition

in preparation for the Division Streetscape and Reconstruction Project planning process to begin July 2004

Help make the Division Street community more:

livable

pedestrian-friendly

community interactive

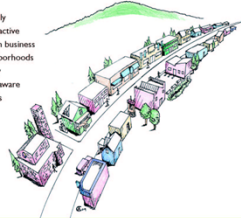
viable and local in business

safe in our neighborhoods

unique in identity

environmentally aware

socially conscious



Learn about sustainability

Practice designing a livable intersection

Enhance your understanding of local planning efforts

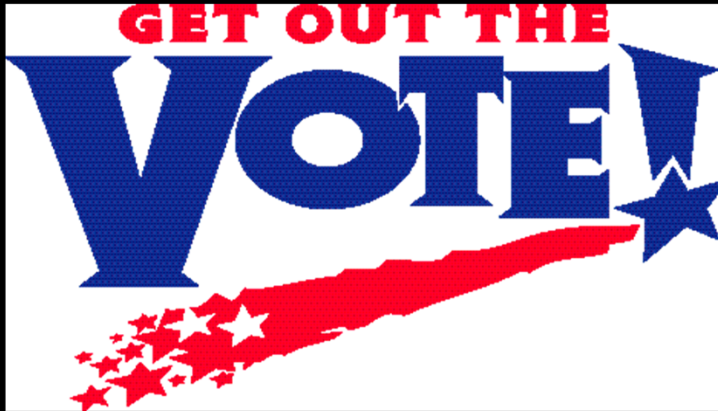
Meet your neighbors

To sign up and/or learn more please contact:

Matt Burlin at 503.249.0066 or email: mburlin@pdx.edu

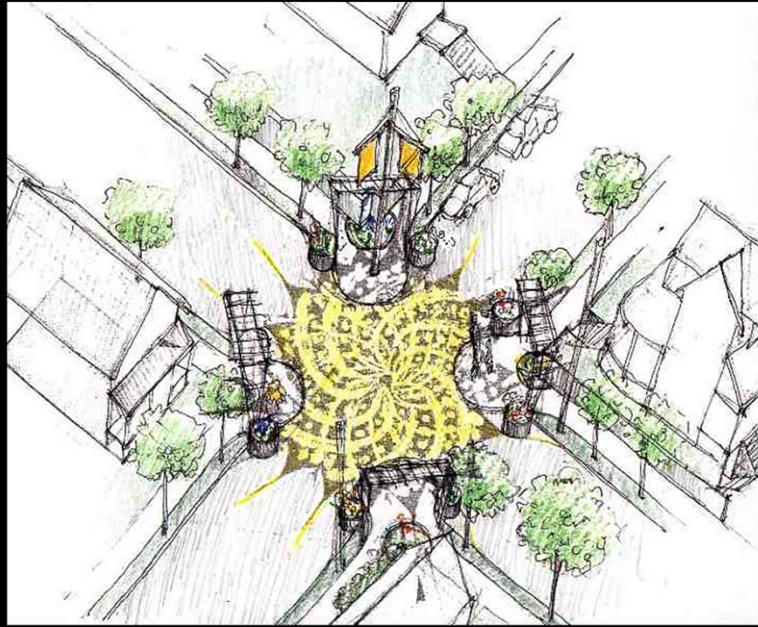
Thursday, May 13 Emerson House 3577 SE Division St. 6:00 - 8:30 pm	Saturday, May 15 Peoples Co-op 9029 SE 21st. Ave. 9:00 - 11:30 am	Monday, May 17 Emerson House 3577 SE Division St. 6:00 - 8:30 pm
--	---	--

Sustainable Options for Civic Engagement



Make Your Voice Heard!

Public Realm



Considerations

- Identity – mixed bag or continuous?
- Long-term planning
- Burden of cost?



Sustainable Options for Public Realm

Aesthetics



Sustainable Options for Public Realm

Identity



Sustainable Options for Public Realm

Accommodations



Sustainable Options for Public Realm

Community character



Scope of Sustainability

Water / ground

Street

People

Business

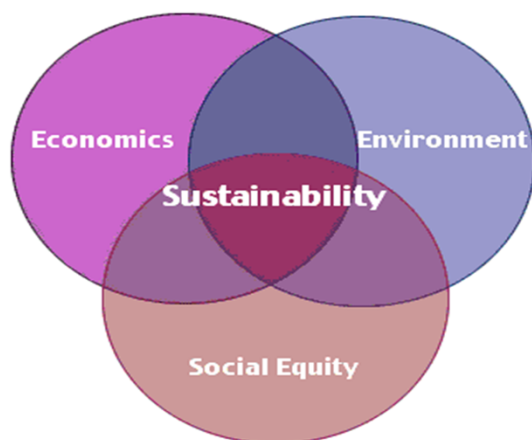
Community

Watershed

Many layers of the environment, each with it's own version of sustainability. Policy and planning have several similarities and conflicts within each layer.

"The Three Es"

© 2004 Team Urbanics - Portland State University,



What will happen next?

- Transportation Growth Management Process begins in July
- Get involved! Community Working Group
- Intersection designs to Portland Office of Transportation

Open House – See your designs!

May 30th at Haven 3-5 PM

