

Figure 1. The 1855 Williamson and Abbot map of the Klamath area, showing routes of early explorations, and the general location of Beatty in the “unexplored” Sprague River area (scale and inset added).

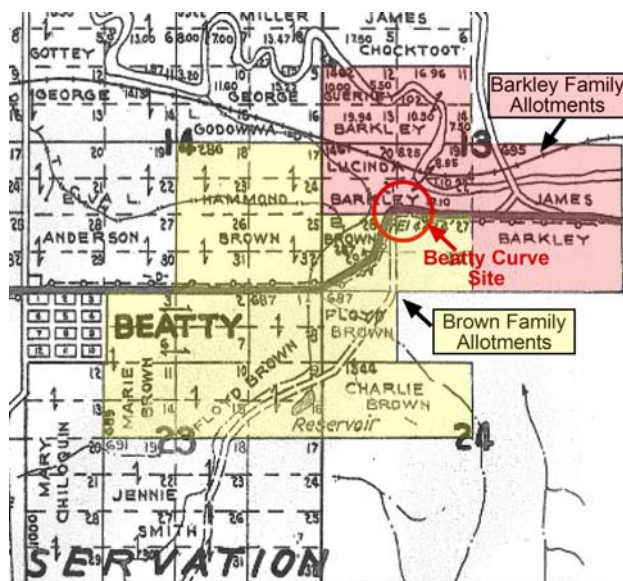


Figure 2. Allotments of the Brown and Barkley families in the Beatty Gap area, shown on a 1936 Metsker map.



Figure 3. Klamath woman in front of her mat house, ca. 1923 (Edward Curtis collection, Library of Congress).

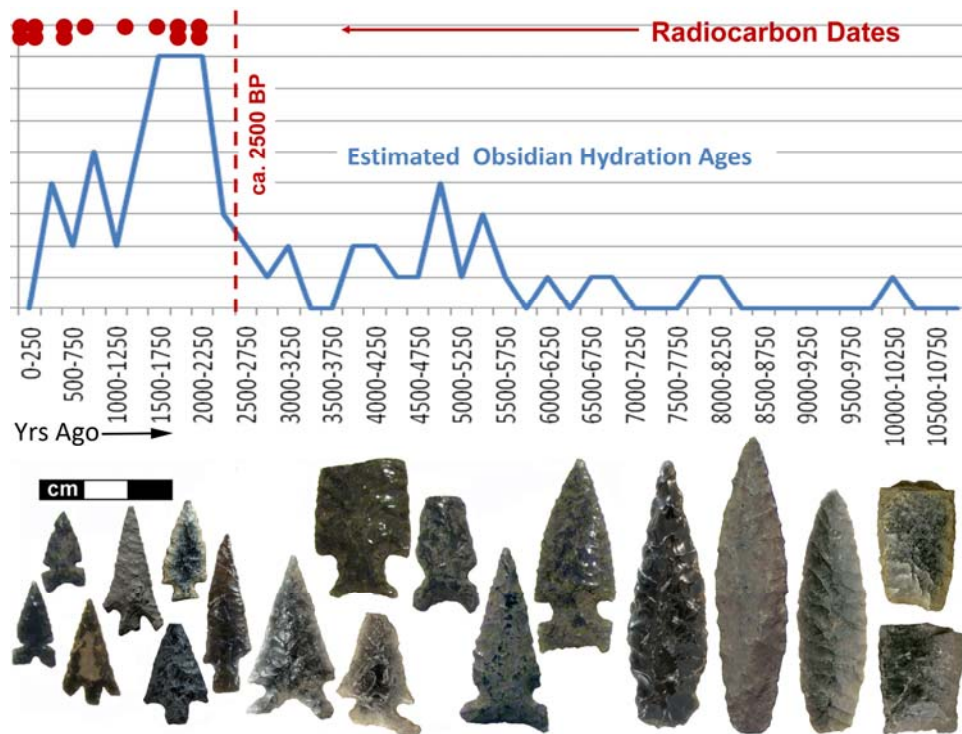


Figure 4. Summary of obsidian hydration, radiocarbon, and typological dating at the Beatty Curve site.



Figure 5. Fur trade-era artifacts; an 1839 coin minted in the Dutch East Indies, and hollow brass trade beads.





Figure 6. The late Amory Bettles, Klamath Tribal member, exposes preserved floorboards at the cabin's northeast corner (view to south).



Figure 7. View to north of a bone and artifact midden marking the cabin's west and south sides, approximated by the dashed line; Klamath tribal excavators Kevin Wright (l) and the late Amory Bettles (r).

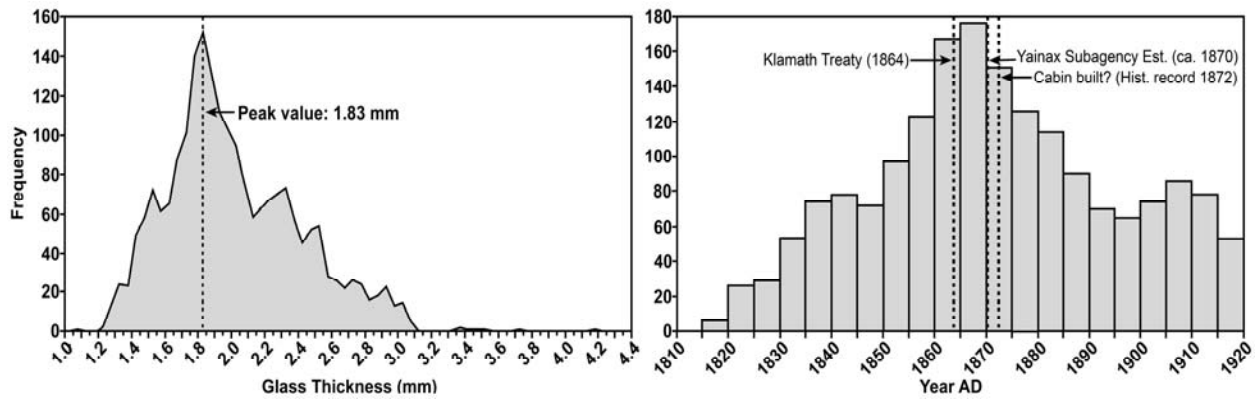


Figure 8. Glass thickness measures from the Beatty Curve site cabin area (top), and histogram of estimated ages of pane glass using the Moir (1987) calculation showing an estimated age of ca. 1865-1870.



Figure 9. Gambling under shelter at the David Chocktoot home near Beatty, ca. 1940s (photo courtesy Bert Lawver).

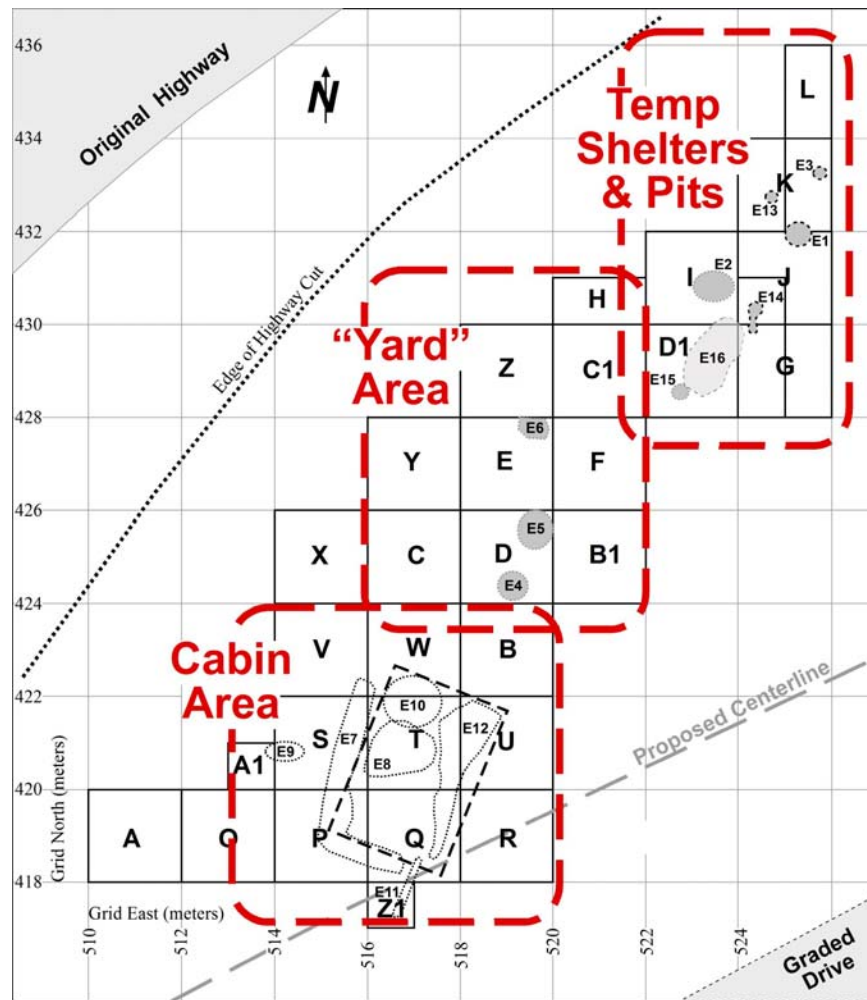


Figure 10. Functional spaces in the East Locus, indicated by features and artifact classes.





Figure 11. Buttons: A. uniform; B. Prosser; C. decorative; D. work clothes; E. shell.



Figure 12. Klamath women posing in their dress finery, in front of a board and canvas house (Maude Baldwin photo, ca. 1900, Klamath County Museum).

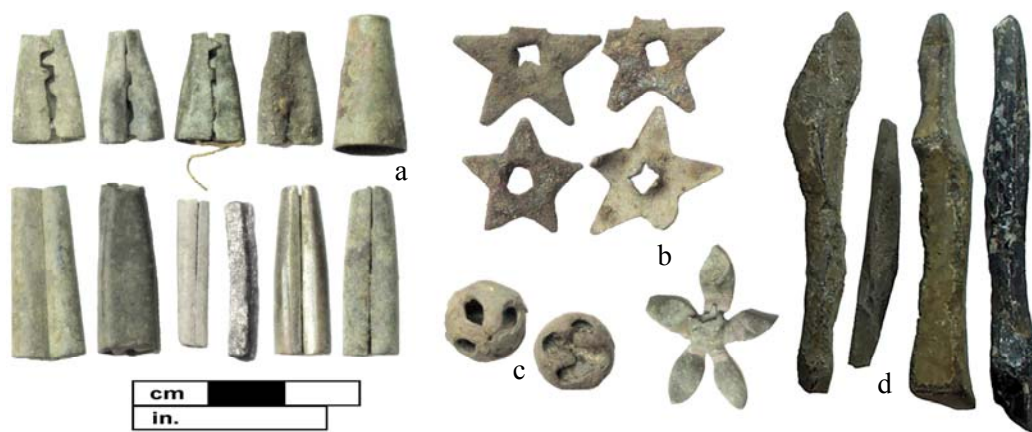


Figure 13. Tinklers: a. metal cones; b. repurposed tobacco tags; c. bells; d. obsidian needles.



Figure 14. Obsidian projectile points from the cabin interior; a-c are from Feature E8 (a large organic/charcoal-stain where a wood stove appears to have been present), d is associated with Feature E12 (flooring planks preserved at the cabin's northeast corner).



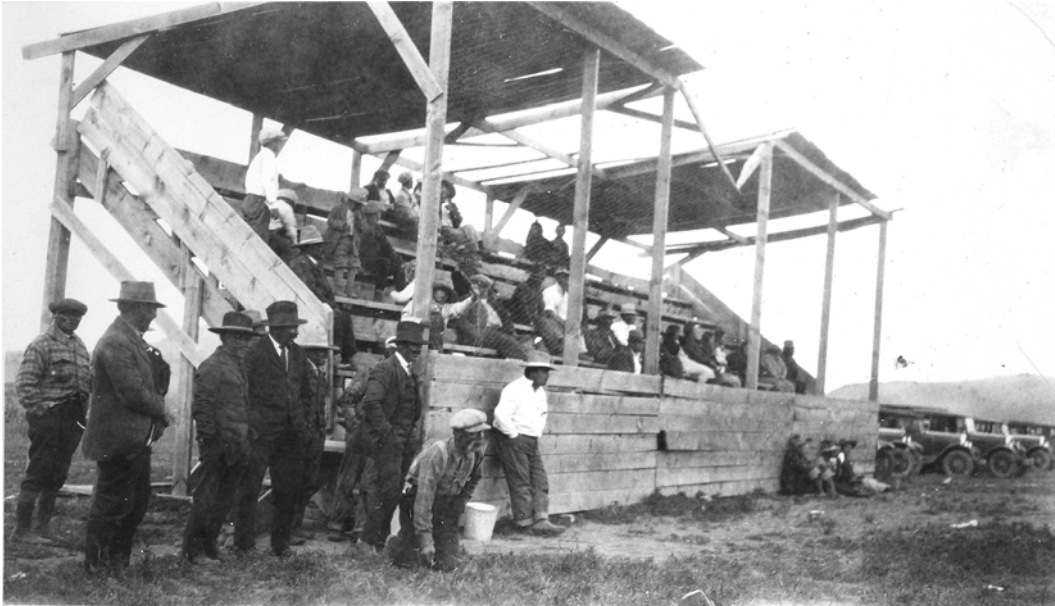


Figure 13. Gathering at the Beatty Rodeo Grounds, ca. 1930s (photo courtesy Billy Tupper Duffy).



Figure 14. Bobby David prays during a modern first sucker ceremony (photo courtesy Doug Deur).