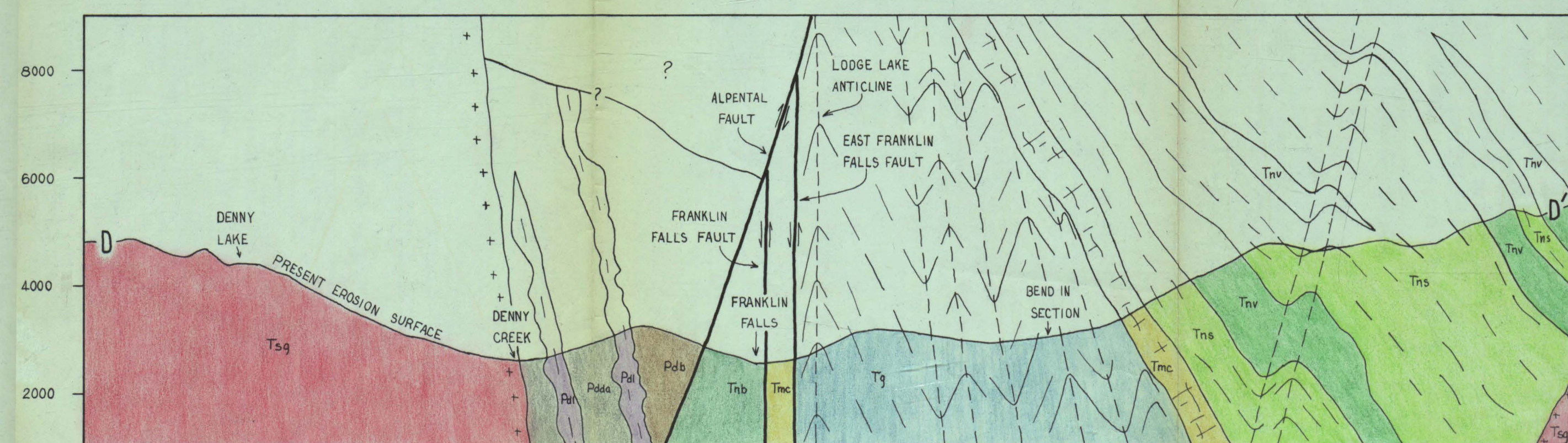
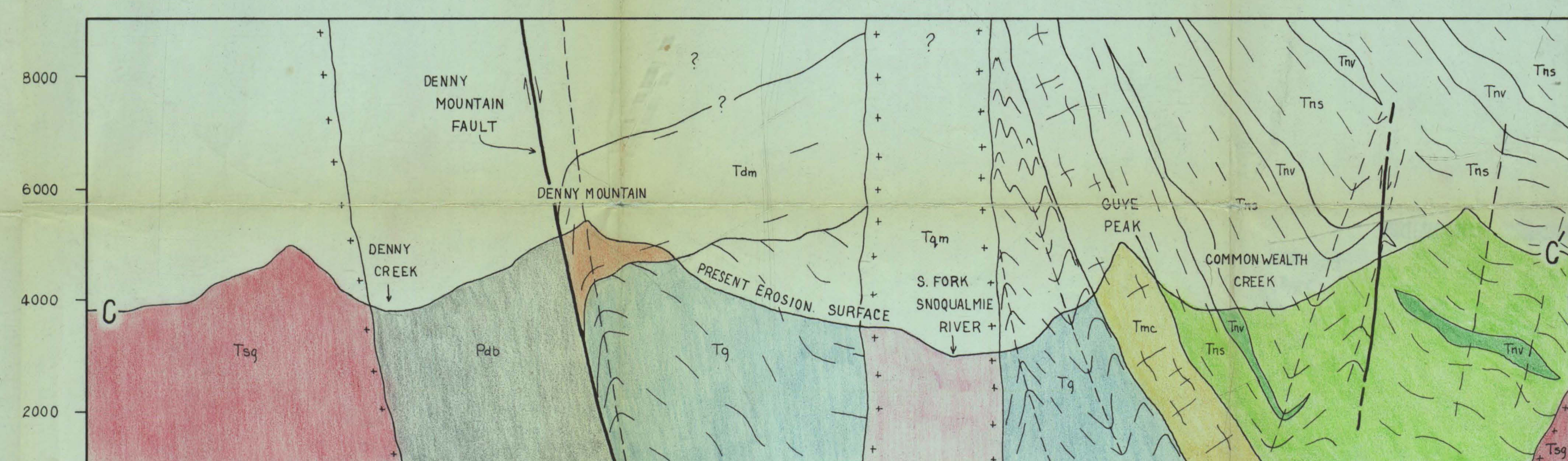
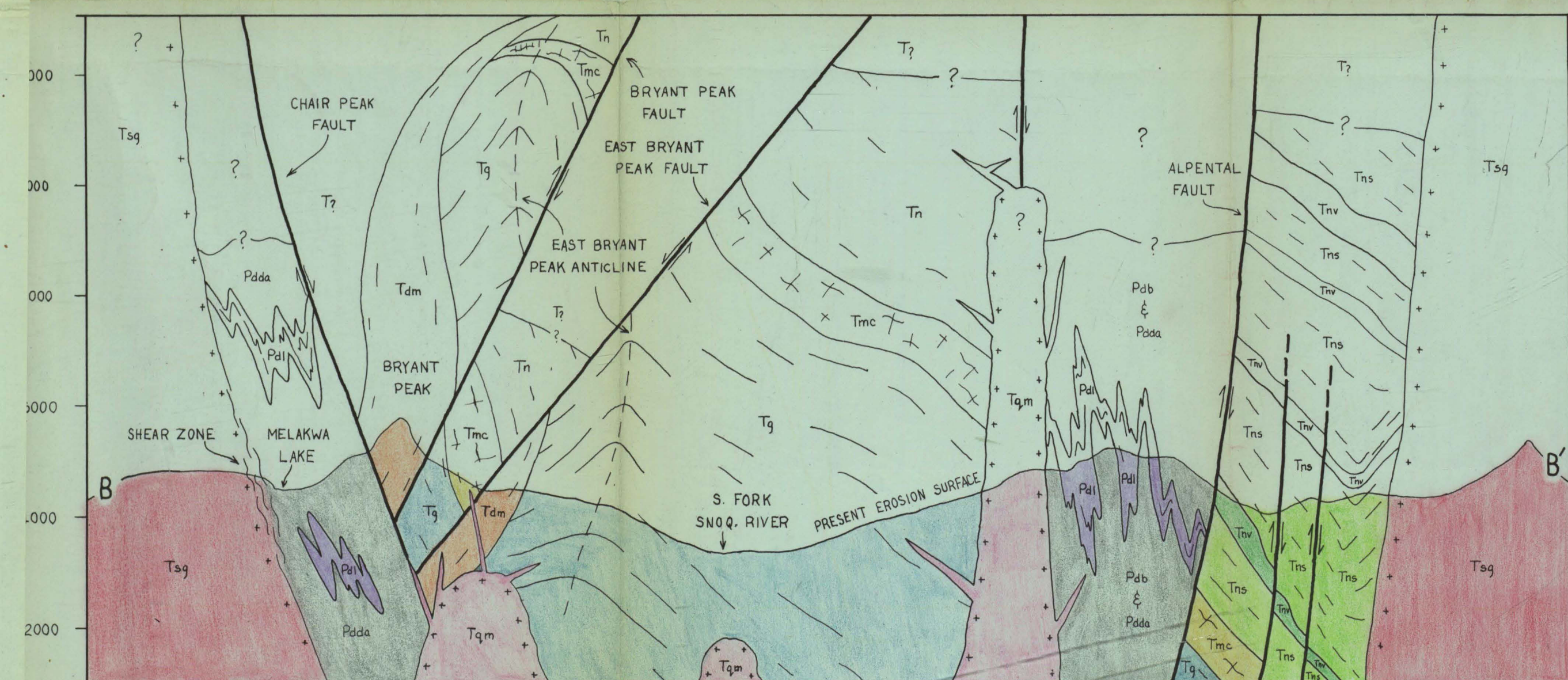
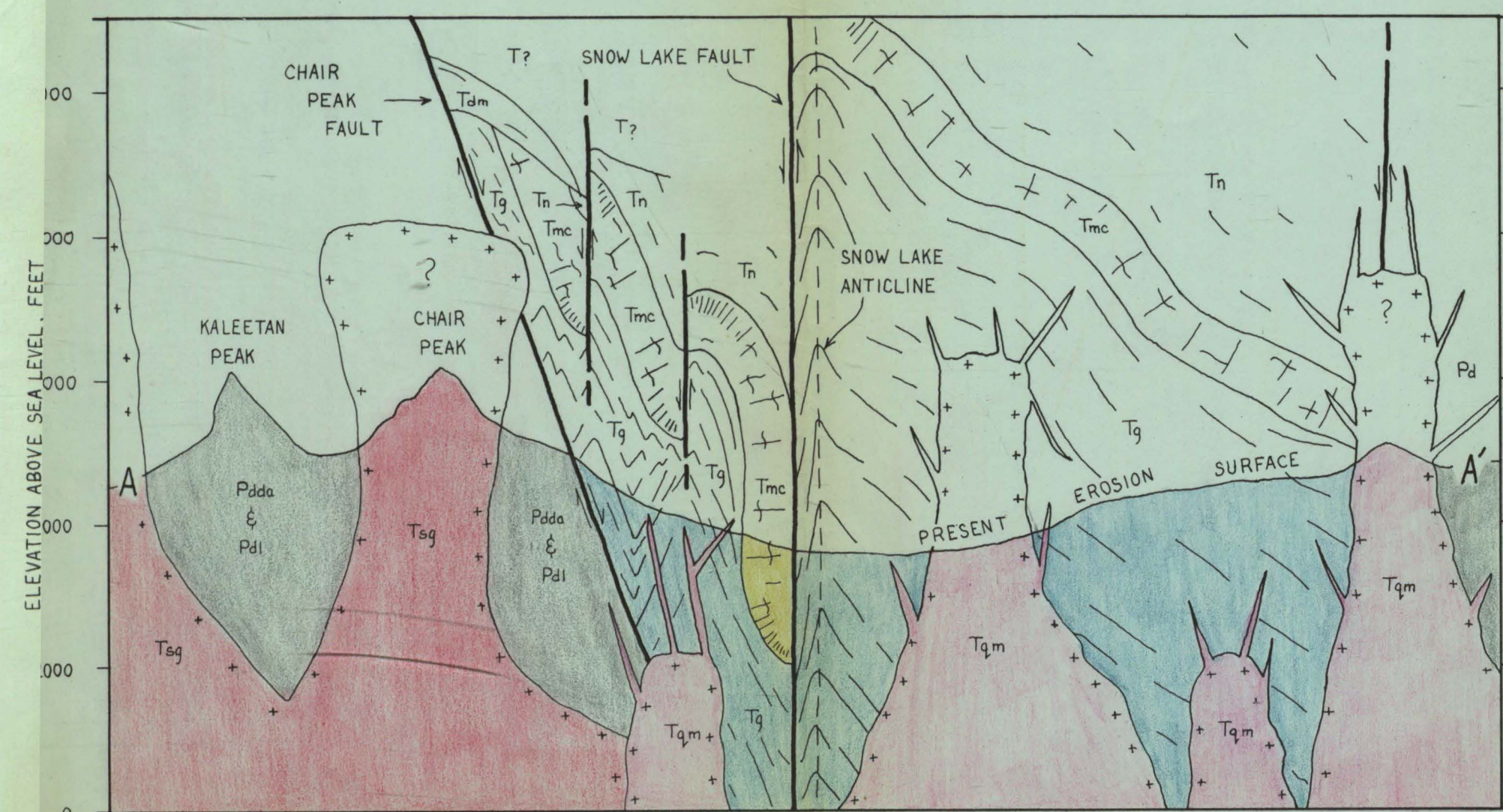
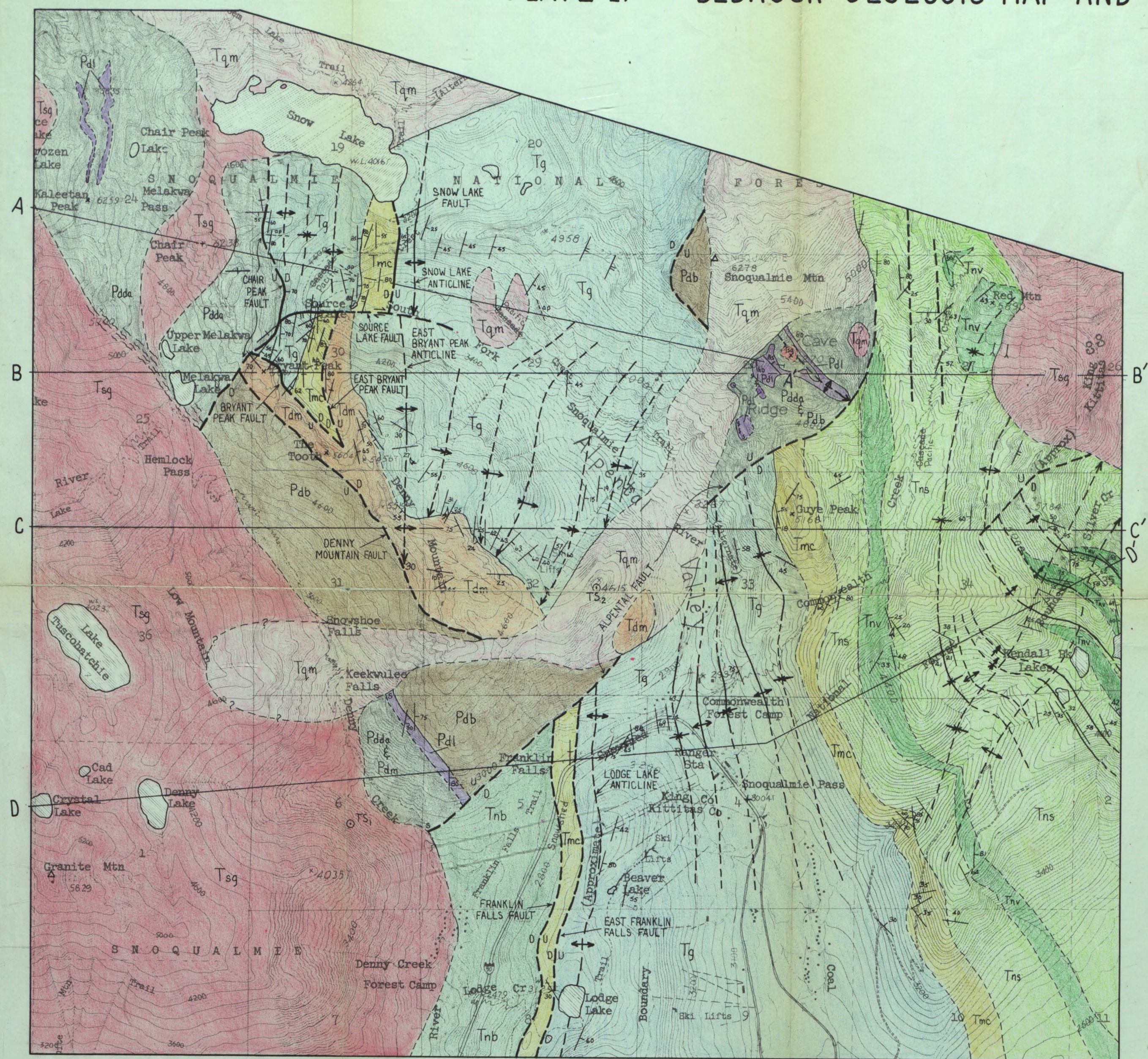


PLATE 1. BEDROCK GEOLOGIC MAP AND CROSSECTIONS OF THE SNOQUALMIE PASS AREA, WASHINGTON



EXPLANATION

- | | | | |
|----------------------------|-----|--|--|
| Oligocene
or
Miocene | Tqm | Snoqualmie batholith | Contact; dashed where approximately located
Fault; dashed where approximately located; U, upthrown side; D, downthrown side
Axis of anticline; dashed where approximately located; arrow shows direction of plunge
Axis of syncline; dashed where approximately located; arrow shows direction of plunge
Axis of flexure; dashed where approximately located; long arrow steepest dipping limb
Strike and dip of bedding; two barbs indicate dip between 30 and 60 degrees
Shear zone
Dike; ap, apatite; hb, hornblende andesite
Fossil leaf locality
Adit
Sample site |
| | Tsg | Preacher Mountain quartz monzonite porphyry | |
| | Tdm | Snoqualmie granodiorite | |
| | Tns | Denny Mountain Formation | |
| Paleocene to Oligocene | Tnb | dacitic and andesitic tuff and volcanic breccia with intercalated andesitic lava | |
| | Tns | Naches Formation | |
| | Tmc | Tns - arkosic sandstone and siltstone, fossiliferous mud-shale | |
| | Tg | Tnv - dacitic and rhyolitic tuff and andesitic lava | |
| Permian | Tnb | Tnb - glomeroporphyritic basaltic lava | |
| | Tmc | Mount Catherine Tuff | |
| | Tg | dacitic and rhyolitic crystal-vitric tuff | |
| | Pdb | Guye Formation | |
| Permian | Pda | mudstone, fossiliferous mud-shale, and chert sandstone and conglomerate | |
| | Pdl | Denny Formation | |
| | Pdb | Pda - dacitic and andesitic pyroclastic rock and lava | |
| | Pdl | Pdb - basaltic lava | |
| Permian | Pdl | Pdl - limestone | |
| | | | |
| | | | |
| | | | |