

GEOLOGIC MAP OF THE SOUTHEAST ONE QUARTER OF THE DUTCHMAN BUTTE QUADRANGLE, OREGON

GEOLOGIC SYMBOLS

CONTACTS

CONTACT

APPROXIMATE CONTACT

BEDDING

STRIKE AND DIP OF BEDS

STRIKE OF VERTICAL BEDS

HORIZONTAL BEDS

STRIKE AND DIP OF OVERTURNED BEDS

FOLIATIONS

STRIKE AND DIP OF FOLIATIONS

STRIKE OF VERTICAL FOLIATIONS

HORIZONTAL FOLIATIONS

FAULTS

FAULT (D, DOWNTHROWN SIDE, U, UPTHROWN SIDE)

FAULT LOCATED APPROXIMATELY

FAULT EXISTENCE UNCERTAIN

EXPLANATION

DOTHAN FORMATION

Dark grey, medium-grained, well indurated feldspathic litharenite interbedded with subequal amounts of black shale. Some basalt near the top of the section. Local lenses of chert and conglomerate.

GRANODIORITE

Dark greyish green medium-grained granodiorite.

SERPENTINITE

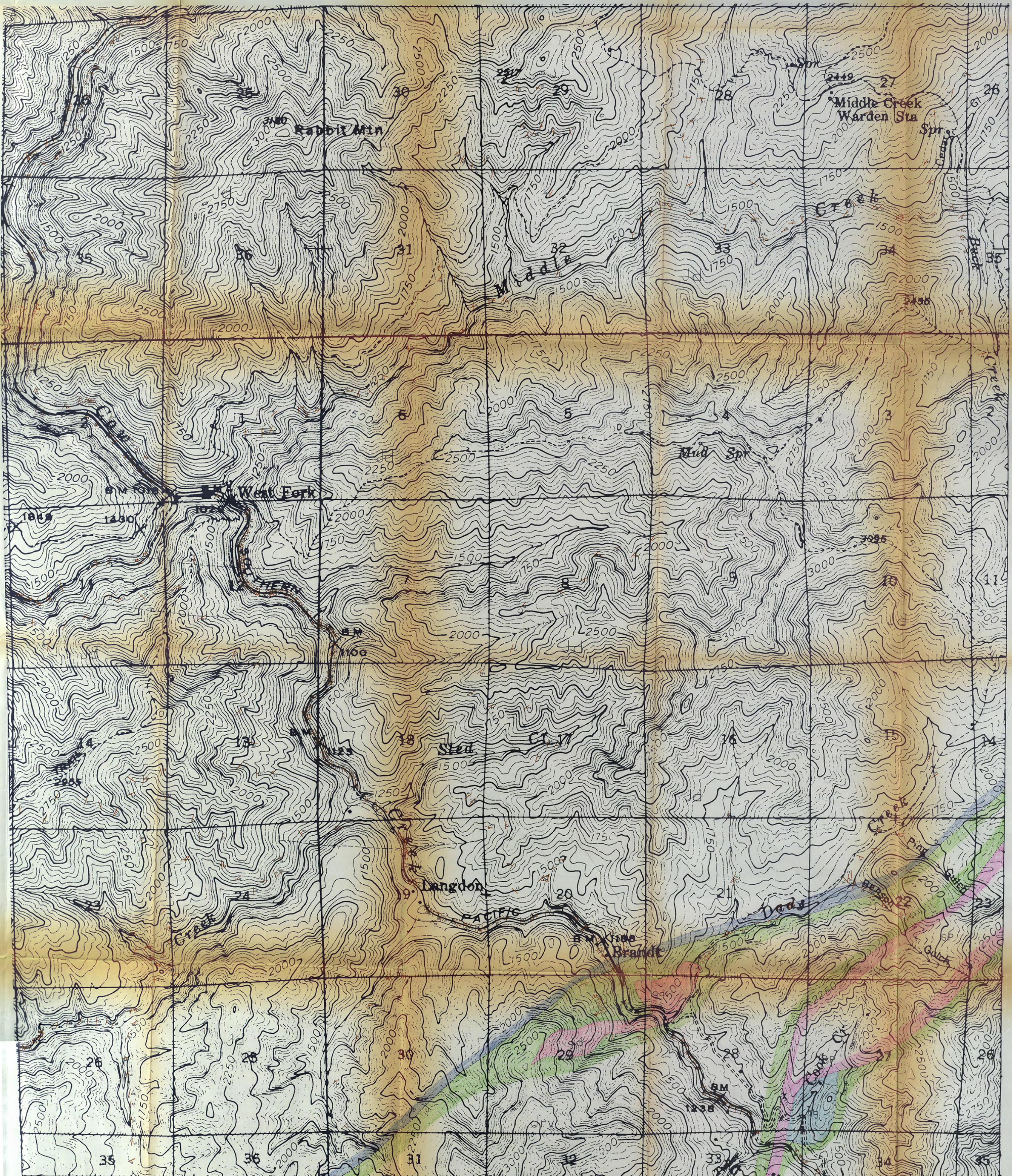
Green to blue green rock composed of minerals of the serpentine group.

ROGUE FORMATION

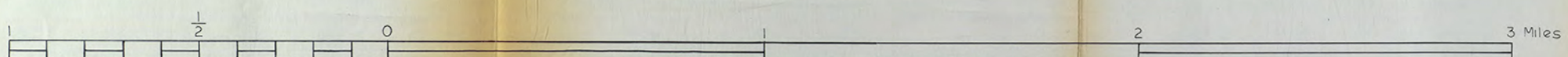
Andesitic to basaltic flows, tuffs, agglomerates and flows. Basalts metamorphosed to the greenish facies.

AMPHIBOLE GNEISS

Highly sheared hornblende gneiss and hornblende schist with lenses of garnetiferous quartzite.



SCALE 1:12000



CONTOUR INTERVAL 50 FEET

