

LD4349
.A85
1982
G39

PORTLAND STATE UNIVERSITY LIBRARY

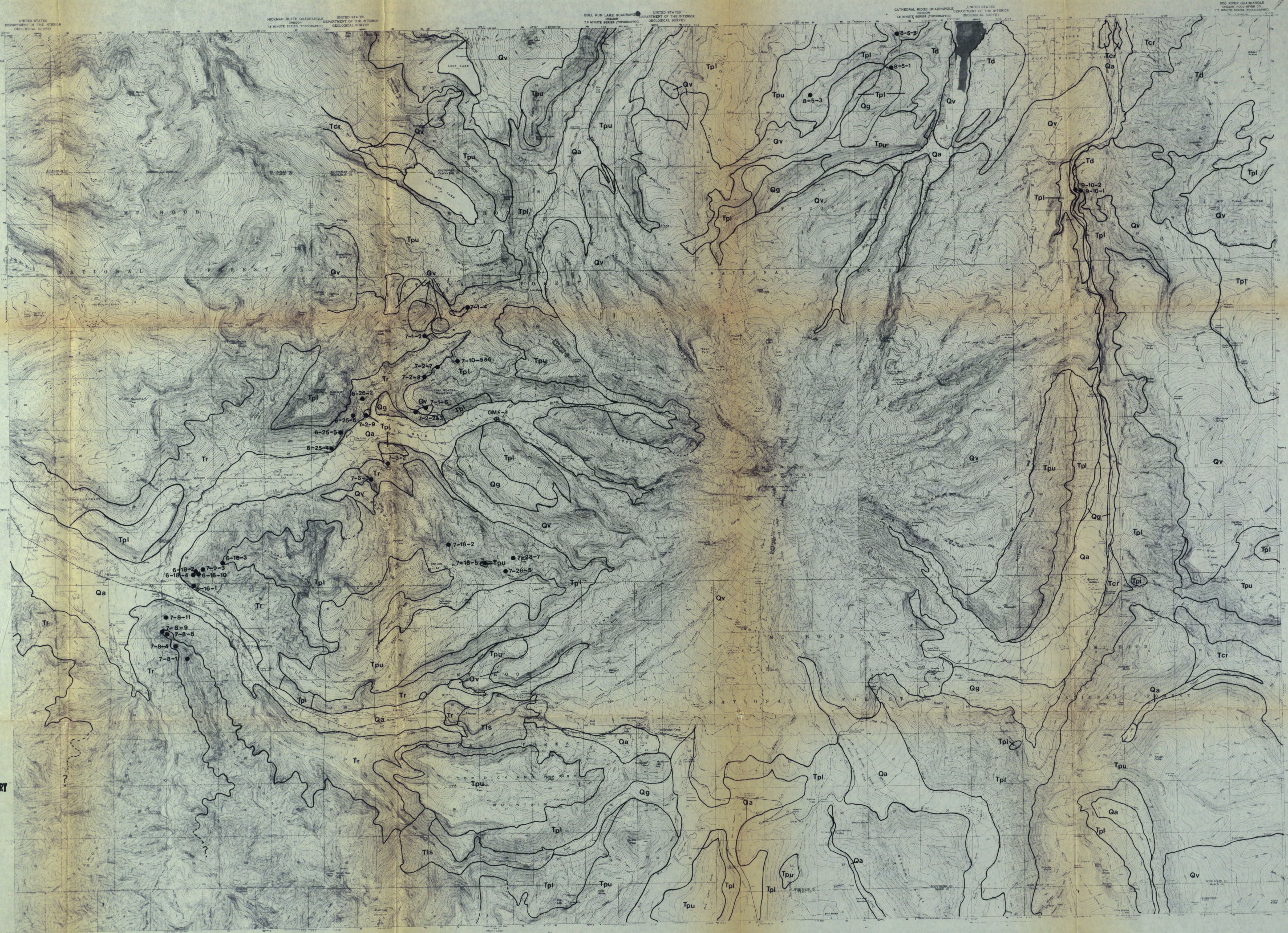


FIGURE 1, Part 1 Sample locations in the Mt. Hood area. Geology from Wise (1969), Newcomb (1969), and Peck et al (1964).

EXPLANATION

- | | | | |
|-----|--|-----|---|
| Qa | Quaternary alluvium and mudflow debris | Tis | Laurel Hill and Still Creek intrusions |
| Qg | Glacial moraines | Tpl | Lower Pliocene volcanics of Wise |
| Qv | Undifferentiated Quaternary volcanics, includes Qba, Qha, Qhc, and Qh of Wise (1969) | Tpi | Lower Pliocene andesitic plugs and shallow intrusions |
| Qvc | Intracanyon lavas and associated ejecta (Newcomb 1969) | Td | Dalles Formation |
| Qtv | Volcanic rocks of High Cascades (Newcomb 1969) | Tr | Rhododendron Formation |
| Tpu | Lower Pliocene volcanics of Wise | Tcr | Columbia River basalt |

BASE FROM U.S.G.S. 1:24,000 TOPO SERIES
RHODODENDRON, 1962, GOVERNMENT
CAMP, 1962, MOUNT HOOD SOUTH,
1962, BADGER LAKE, 1962, DOG RIVER
1962, CATHEDRAL RIDGE, 1962,
BULL RUN, 1962, HICKMAN
BUTTE, 1962, COMPILED
BY MENLO PARK BASE
MAPS SECTION.
KEITH (56-23) (3-80)
SCALE: 1:62,500

