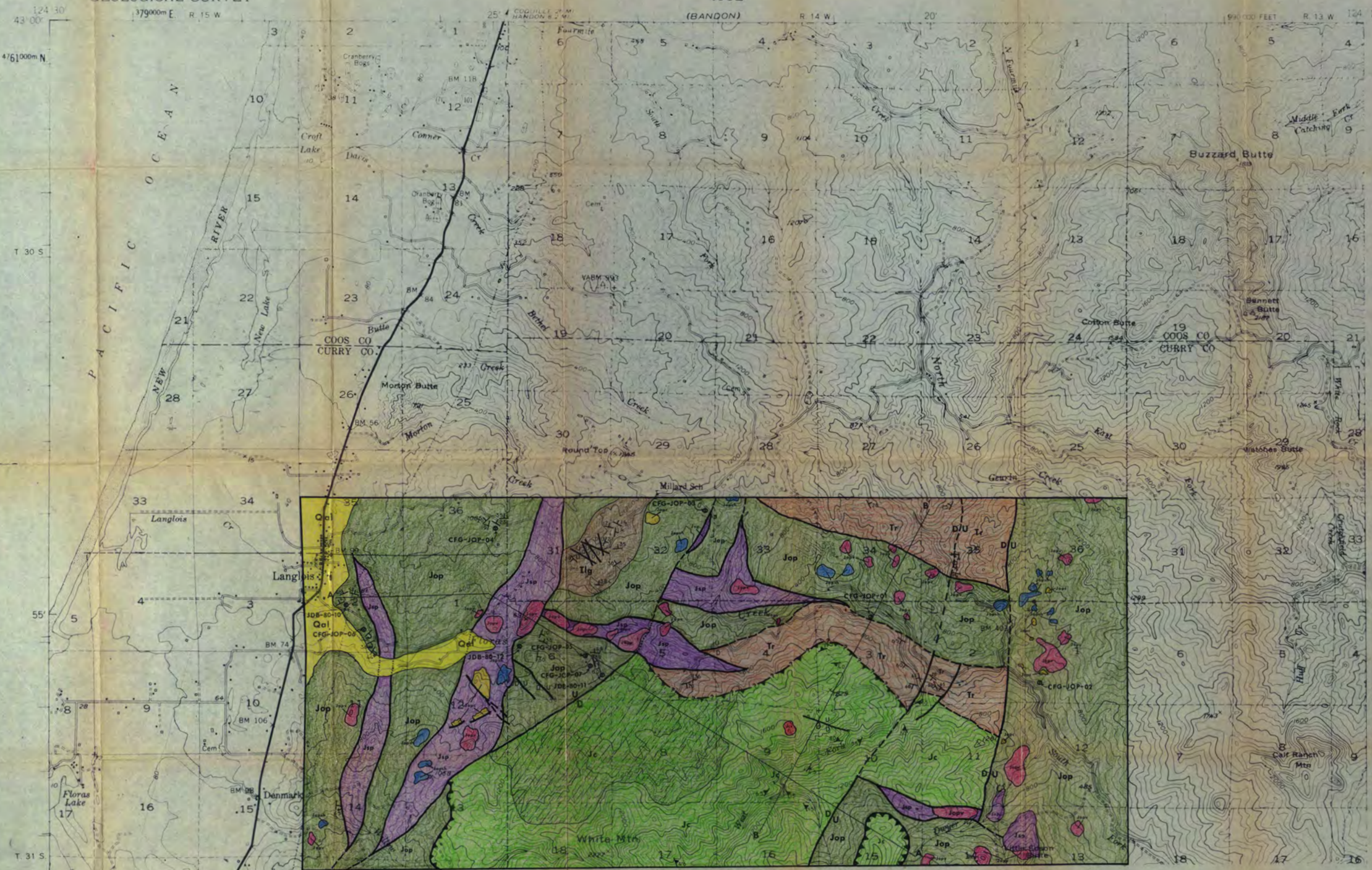


**GEOLOGIC MAP  
OF THE  
FLORAS CREEK AREA  
SOUTHWESTERN OREGON  
1982**

LANGLOIS QUADRANGLE  
OREGON

UNITED STATES  
DEPARTMENT OF THE INTERIOR  
GEOLOGICAL SURVEY



**PLATE I  
EXPLANATION**

**Qal**

**Alluvium**

Valley fill consisting of silt, sand, and gravel.

**Tlg**

**Lookingglass Formation**

Massive, medium to coarse grained sandstone; channelled and cross-bedded sandstone; coarse grained pebbly sandstone and conglomerate lenses and channels; massive to thick bedded conglomerate; minor rhythmically bedded sandstone and siltstone.

**Tr**

**Roseburg Formation**

Massive, fine to medium grained sandstone with scattered lenses of chert pebble conglomerate; minor rhythmically bedded sandstone and siltstone.

**Jop**

**Otter Point Formation**

Jop - undifferentiated, but predominantly pervasively sheared sandstone and argillite surrounding blocks of; Jopv - massive meta-basalt; Jopsh - massive, foliated, or gneissic banded, garnet, glaucophane schist (bluechist); Jopoc - rhythmically bedded radiolarian chert. A mélange complex.

**Jsp**

**Serpentine**

**Jc**

**Colebrooke Schist**

Metamorphosed graded beds of sandstone and shale with rare blocks of metabasalt (dov).

Contact, dashed where approximate.

Fault, dashed where approximate, dotted where inferred; U, upthrown side; D, downthrown side.

Thrust fault, with alternating "T" where approximate.

Landslide area.

Strike and dip of beds.

Foliation in metamorphic rocks.

Sample location.

**GEOLOGY**

by

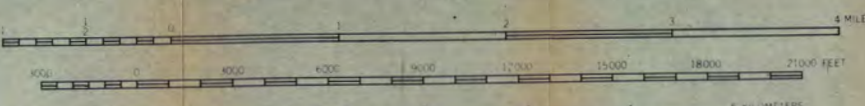
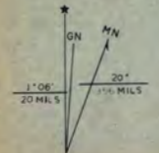
J. D. BOWEN

1982

Map compiled from field data collected 1978 - 1980.

Mapped, edited, and published by the Geological Survey  
Control by USGS and USC&GS  
Topography from aerial photographs by multiplex methods  
Aerial photographs taken 1952. Field check 1954  
Polyconic projection, 1927 North American datum  
10,000-foot grid based on Oregon coordinate system, south zone  
Dashed land lines indicate approximate locations

1000 meter Universal Transverse Mercator grid ticks  
zone 10.



**CONTOUR INTERVAL 80 FEET**  
DOTTED LINES REPRESENT HALF INTERVAL CONTOURS  
NATIONAL GEODETIC VERTICAL DATUM OF 1949  
SHORELINE SHOWN REPRESENTS THE APPROXIMATE LINE OF MEAN HIGH WATER  
THE AVERAGE RANGE OF TIDE IS APPROXIMATELY 8 FEET



**ROAD CLASSIFICATION**  
1983  
Heavy-duty ————  
Light-duty ————  
Unimproved dirt - - - - -  
U S Route □

**LANGLOIS, OREG.**  
N4245-W12415/15

1954

AMS 1169 IV SERIES 10