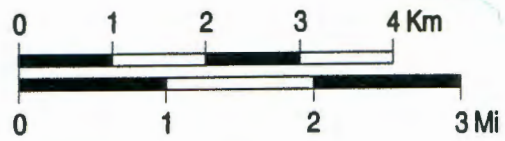
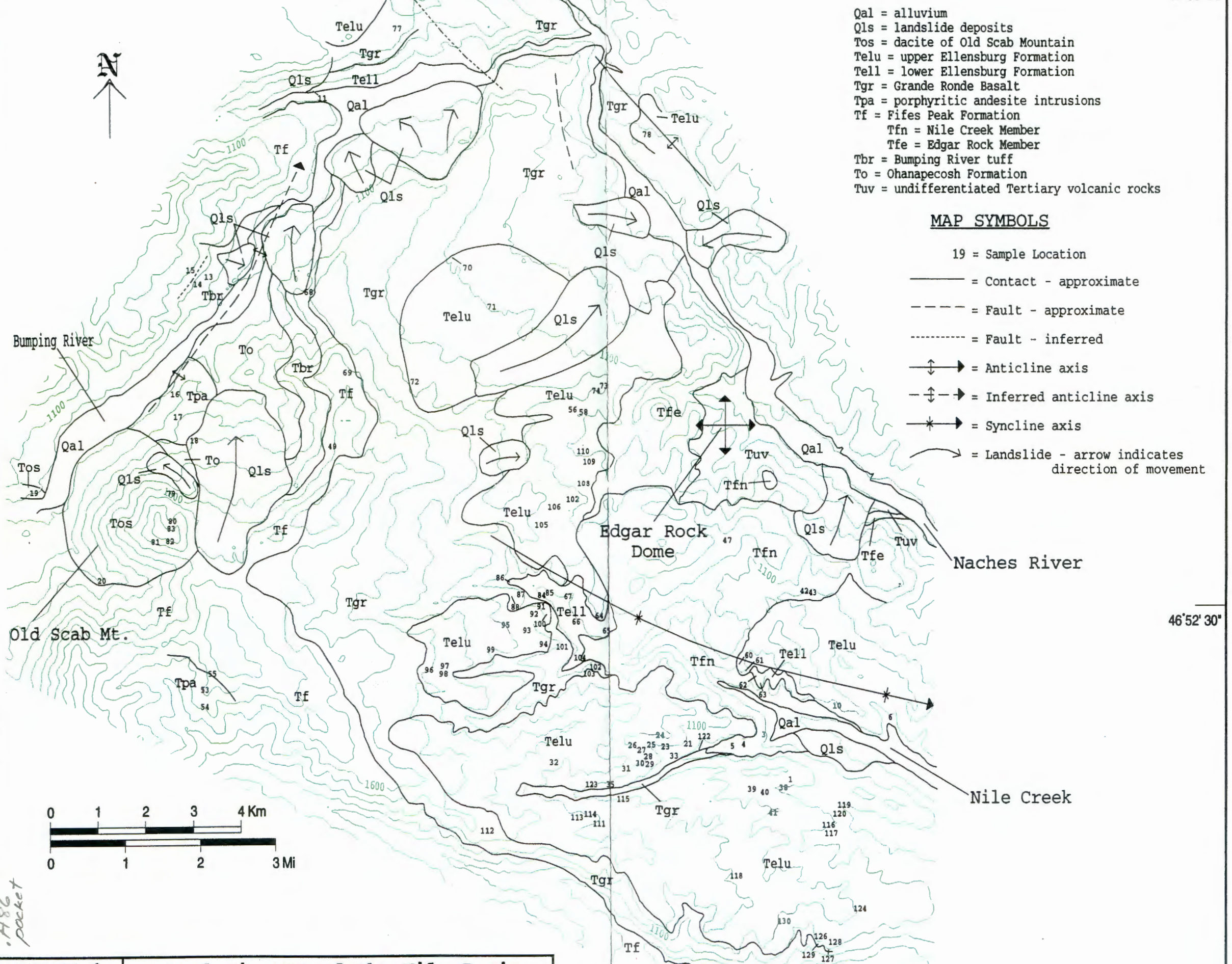


Qal = alluvium
 Qls = landslide deposits
 Tos = dacite of Old Scab Mountain
 Telu = upper Ellensburg Formation
 Tell = lower Ellensburg Formation
 Tgr = Grande Ronde Basalt
 Tpa = porphyritic andesite intrusions
 Tf = Fifes Peak Formation
 Tfn = Nile Creek Member
 Tfe = Edgar Rock Member
 Tbr = Bumping River tuff
 To = Ohanapecosh Formation
 Tuv = undifferentiated Tertiary volcanic rocks

MAP SYMBOLS

- 19 = Sample Location
- = Contact - approximate
- - - = Fault - approximate
- · · · · = Fault - inferred
- ↕ = Anticline axis
- - - ↕ = Inferred anticline axis
- * = Syncline axis
- ↘ = Landslide - arrow indicates direction of movement



46°52'30"

PORTLAND STATE UNIVERSITY LIBRARY

LD 4349
 .A85
 .1996
 .A86
 packet

PLATE 1 **Geologic Map of the Nile Basin**
 by Christopher C. Humphrey: Portland State University Masters Thesis, 1996