

Appendix B

Base Maps

Base Maps

Maps were created to inventory a range of conditions and attributes in the David Hill Urban Reserve. These base maps were then used to help in the evaluation of the site, especially in regard to existing conditions.

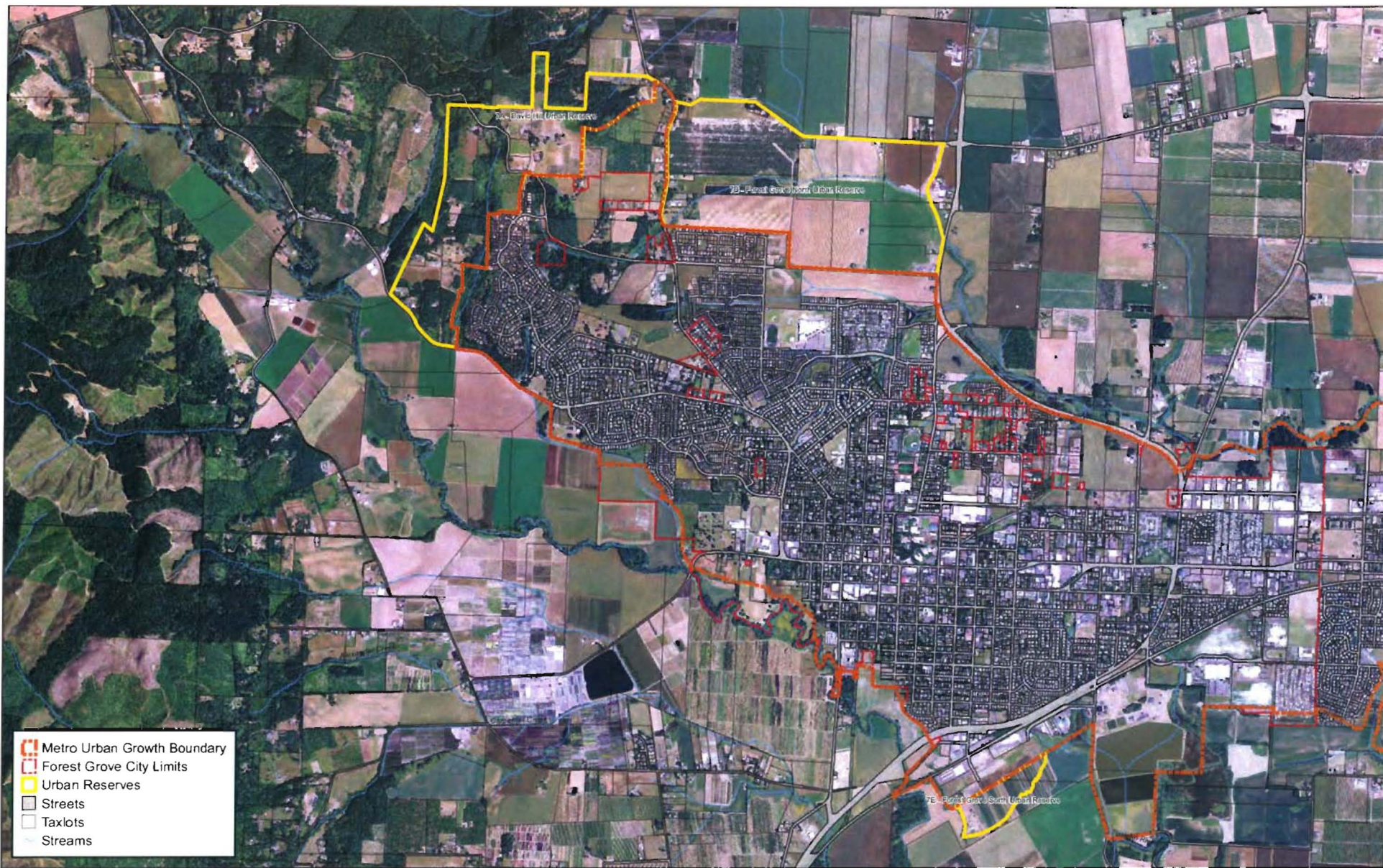
These maps are included here for reference. Some are also used in the main text of the report but are identified with different figure numbers.

Data and Methodology

All water features, floodplains, and building footprints were identified using Metro's RLIS database. Land elevations, slopes, and vegetation information were primarily derived from Light Detection and Ranging (LiDAR) data collected for the Oregon Department of Forestry. Additional information was collected through site visits, orthophotos, and feedback from local residents and community members during the public outreach process. Data was processed and analyzed using a geographic information system (GIS) and further refined based on public feedback and site visits.

The following base maps are included in this appendix:

1. City of Forest Grove and Surrounding Area
2. Aerial Photo View (2009)
3. Comprehensive Plan Designations
4. Zoning
5. Bicycle Routes and Footpaths
6. Parks and Greenspaces
7. Existing Water and Sewer Lines
8. Soils
9. Landslide Hazard
10. Topography and Percent Slope
11. Streams and Wetlands
12. Existing Vegetation (2007)
13. Natural Constraints
14. Streets, Roads, and Driveways



CITY OF FOREST GROVE AND SURROUNDING AREA

Base Map I
David Hill Urban Reserve Concept Plan

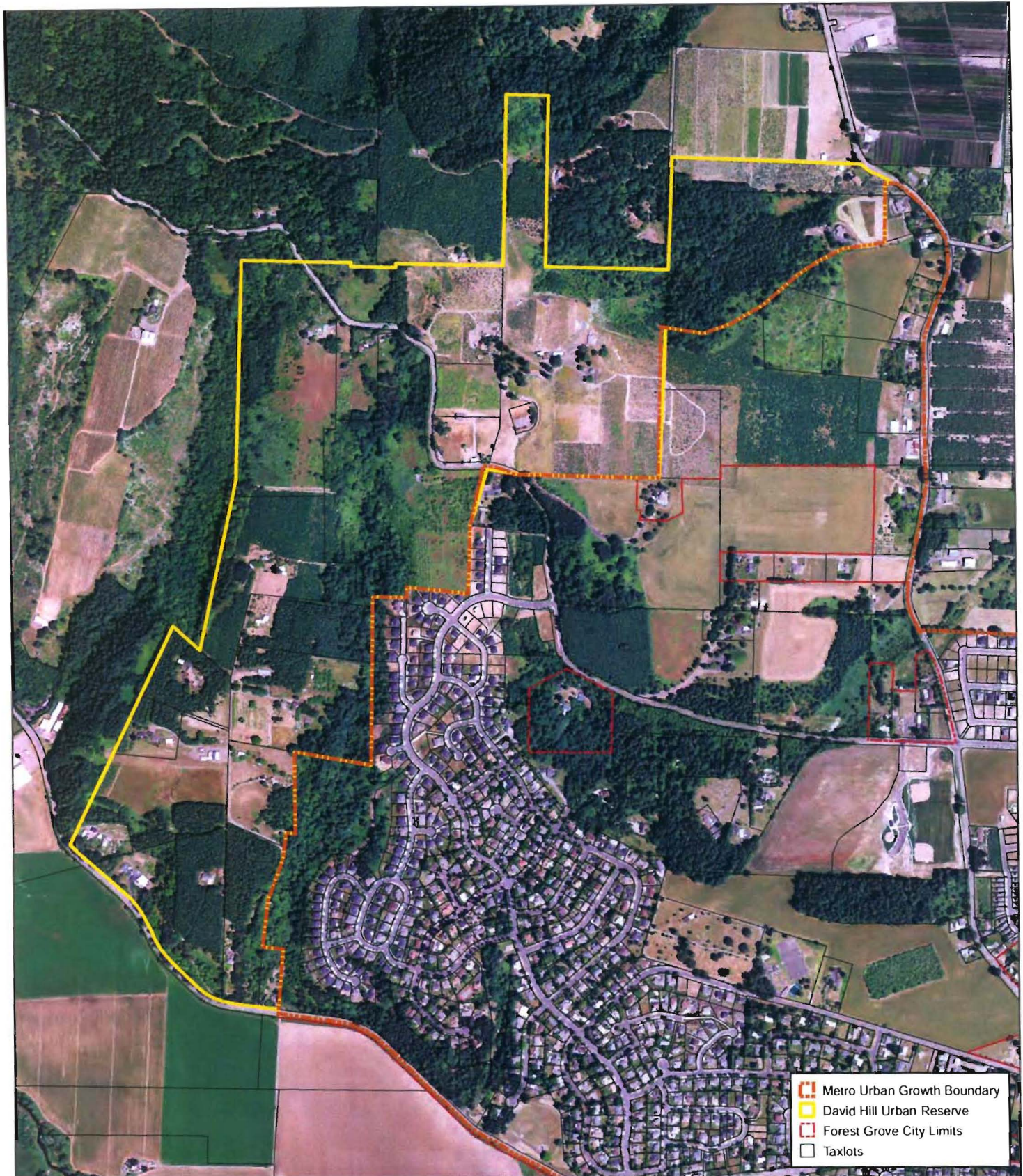
Data in this map is sourced from Metro's RLIS database, City of Forest Grove, U.S. Dept. of Agriculture, and the State of Oregon. The data was developed at multiple scales and accuracies. No warranty is made on the accuracy of the features shown.



Version 06/03/2011



0 0.25 0.5 1 Miles





-  Metro Urban Growth Boundary
-  David Hill Urban Reserve
-  Forest Grove City Limits
-  Taxlots

AERIAL PHOTO VIEW (2009)

Base Map 2

David Hill Urban Reserve Concept Plan

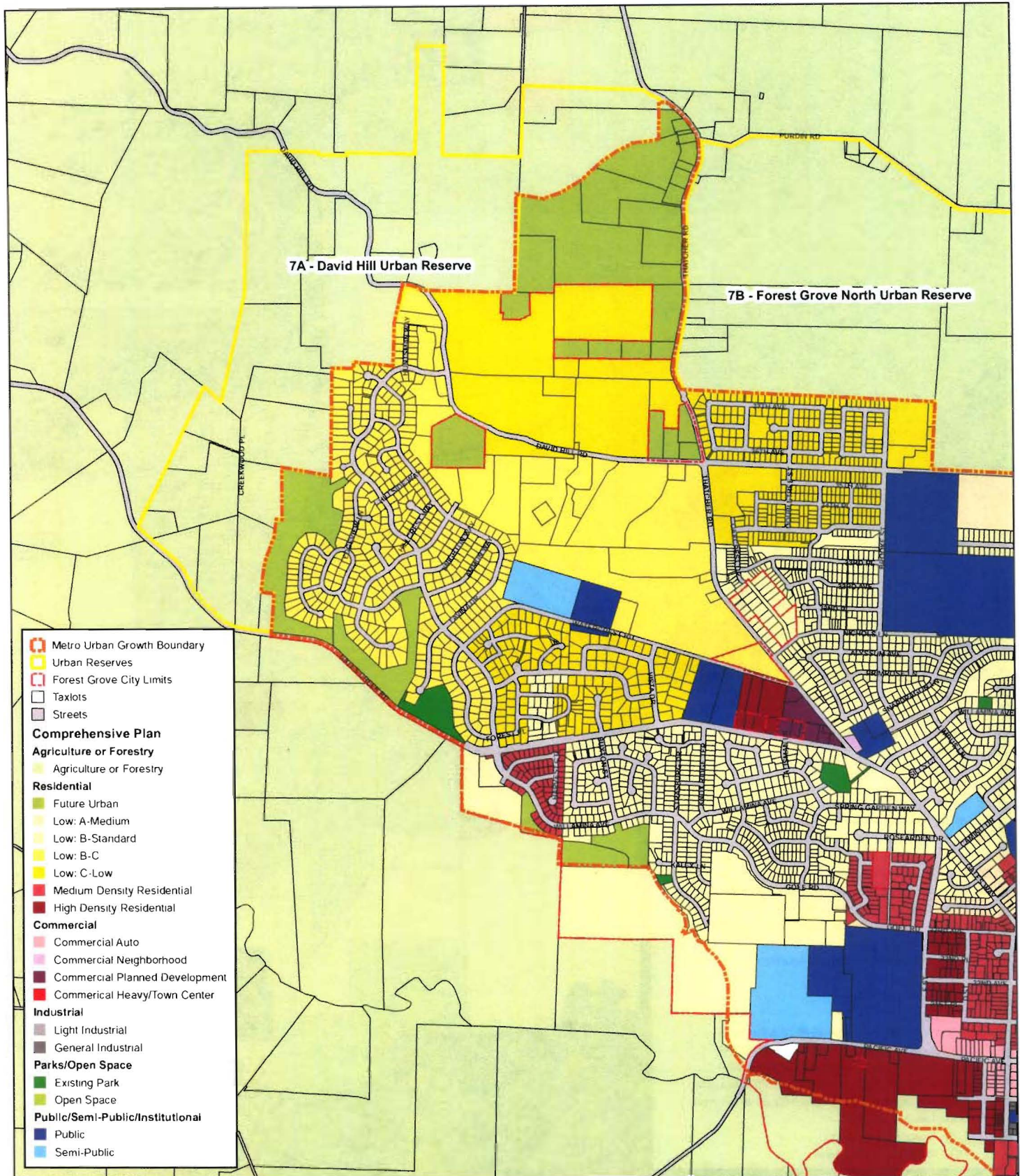
Data in this map is sourced from Metro's RLPS database, City of Forest Grove, U.S. Dept of Agriculture, and the State of Oregon. The data was developed at multiple scales and accuracies. No warranty is made on the accuracy of the features shown.

Version 06/03/2011



0 500 1,000 2,000 Feet





COMPREHENSIVE PLAN DESIGNATIONS

Base Map 3

David Hill Urban Reserve Concept Plan

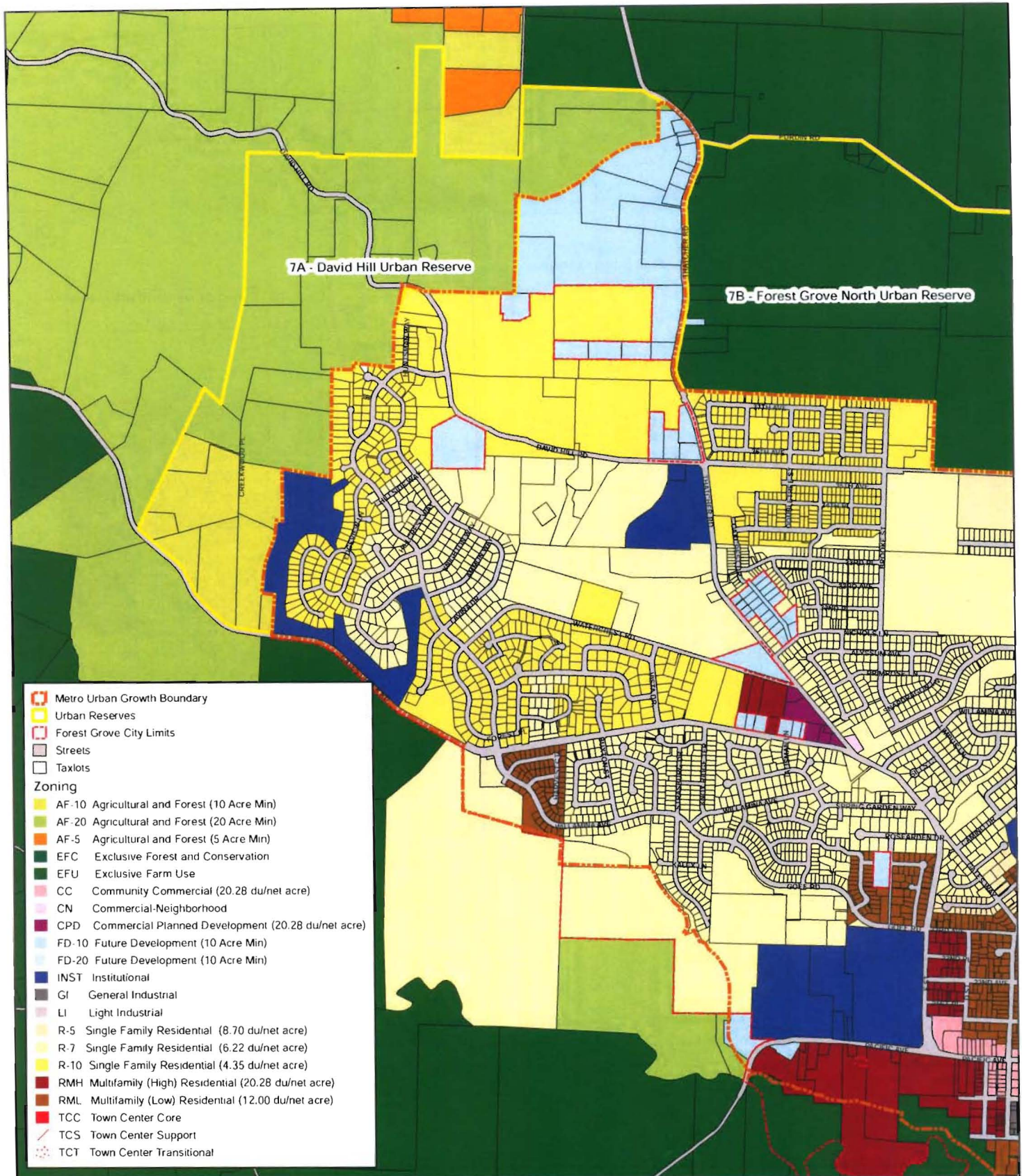
Data in this map is sourced from Metro's RLIS database, City of Forest Grove, and the State of Oregon. The data was developed at multiple scales and accuracies. No warranty is made on the accuracy of the features shown.

Version 06/03/2011



0 1,000 2,000 4,000 Feet





ZONING

Base Map 4
David Hill Urban Reserve Concept Plan

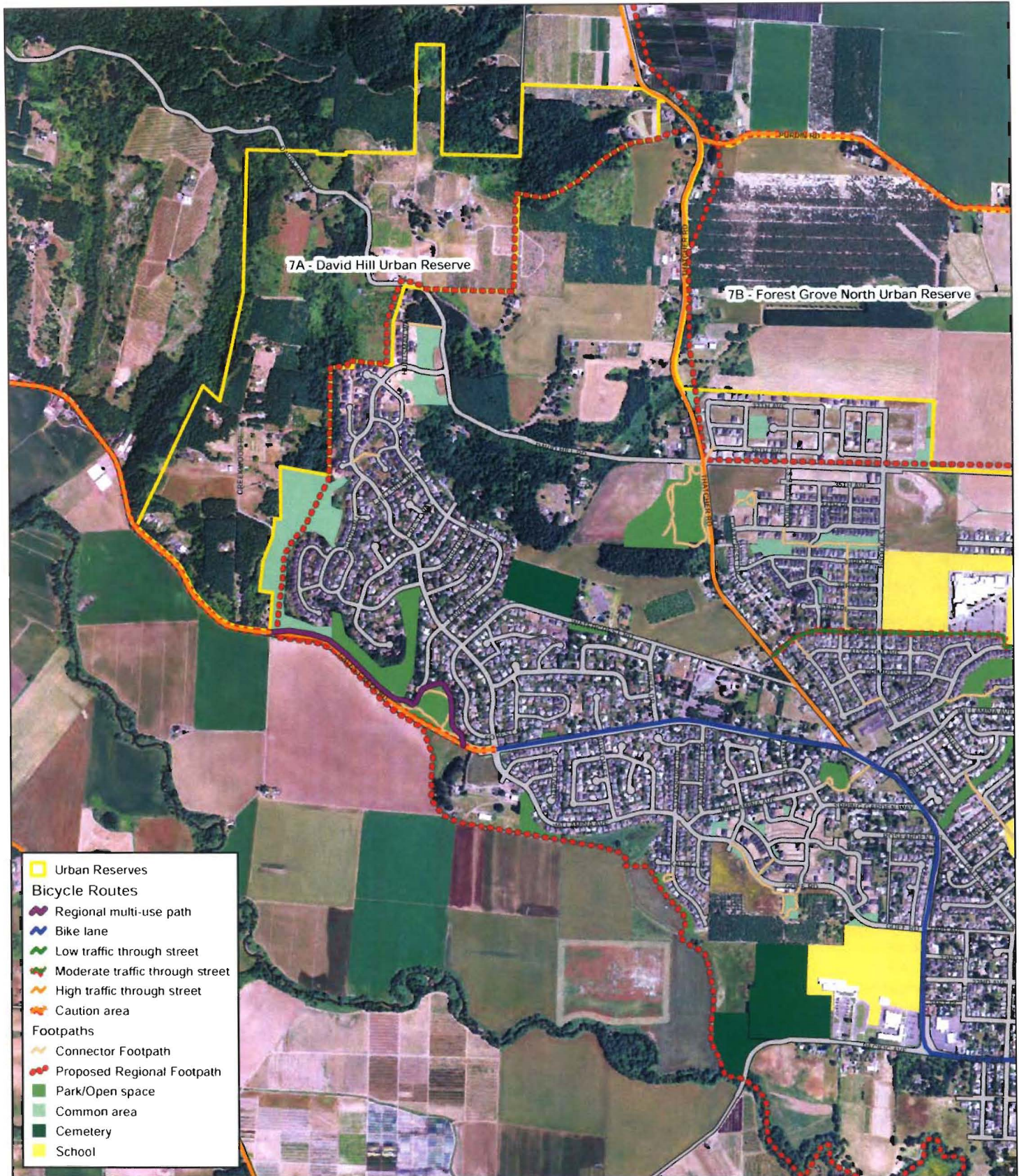
Data on this map is sourced from Metro's R/LIS database, City of Forest Grove, and the State of Oregon. The data was developed at multiple scales and accuracies. No warranty is made on the location accuracy of the features shown in this map.

Version: 06/03/2011



0 1,000 2,000 4,000
Feet





BICYCLE ROUTES AND FOOTPATHS

Base Map 5
David Hill Urban Reserve Concept Plan

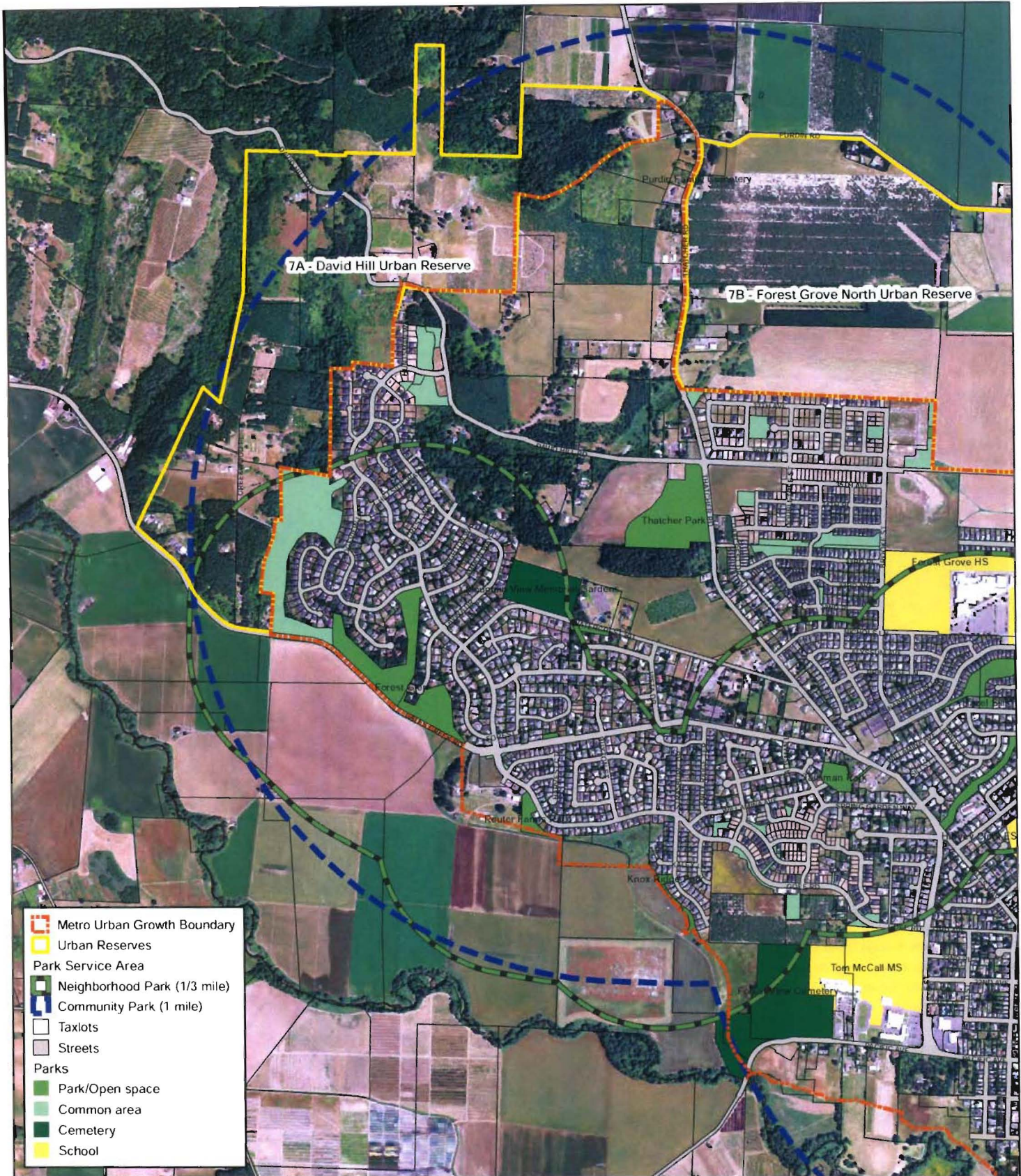
Data in this map is sourced from Metro's RUS database, City of Forest Grove, U.S. Dept of Agriculture, and the State of Oregon. The data was developed at multiple scales and accuracies. No warranty is made on the accuracy of the features shown.

Version: 06/03/2011



0 1,000 2,000 4,000
Feet





PARKS AND GREENSPACES

Base Map 6
David Hill Urban Reserve Concept Plan

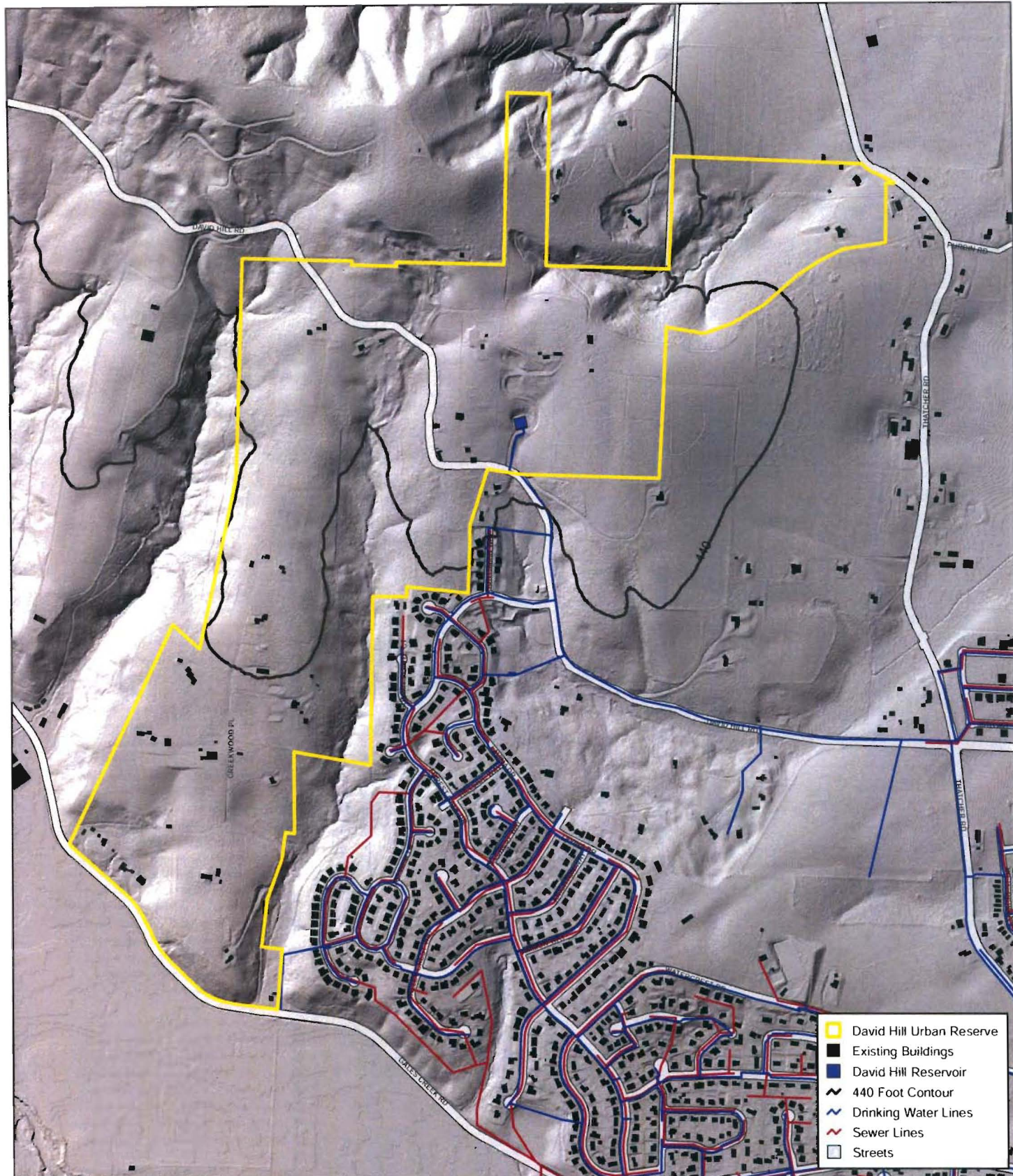
Data on this map is sourced from Metro's RLIS database, City of Forest Grove, and the State of Oregon. The data was developed at multiple scales and accuracies. No warranty is made on the location accuracy of the features shown in this map.

Version 06/03/2011



0 1,000 2,000 4,000
Feet

vista planning



- David Hill Urban Reserve
- Existing Buildings
- David Hill Reservoir
- 440 Foot Contour
- Drinking Water Lines
- Sewer Lines
- Streets

EXISTING WATER & SEWER LINES

Base Map 7

David Hill Urban Reserve Concept Plan

Data on this map is sourced from Metro's RLIS database, City of Forest Grove, and the State of Oregon. The data was developed at multiple scales and accuracies. No warranty is made on the location accuracy of the features shown on this map.

Version 06/03/2011



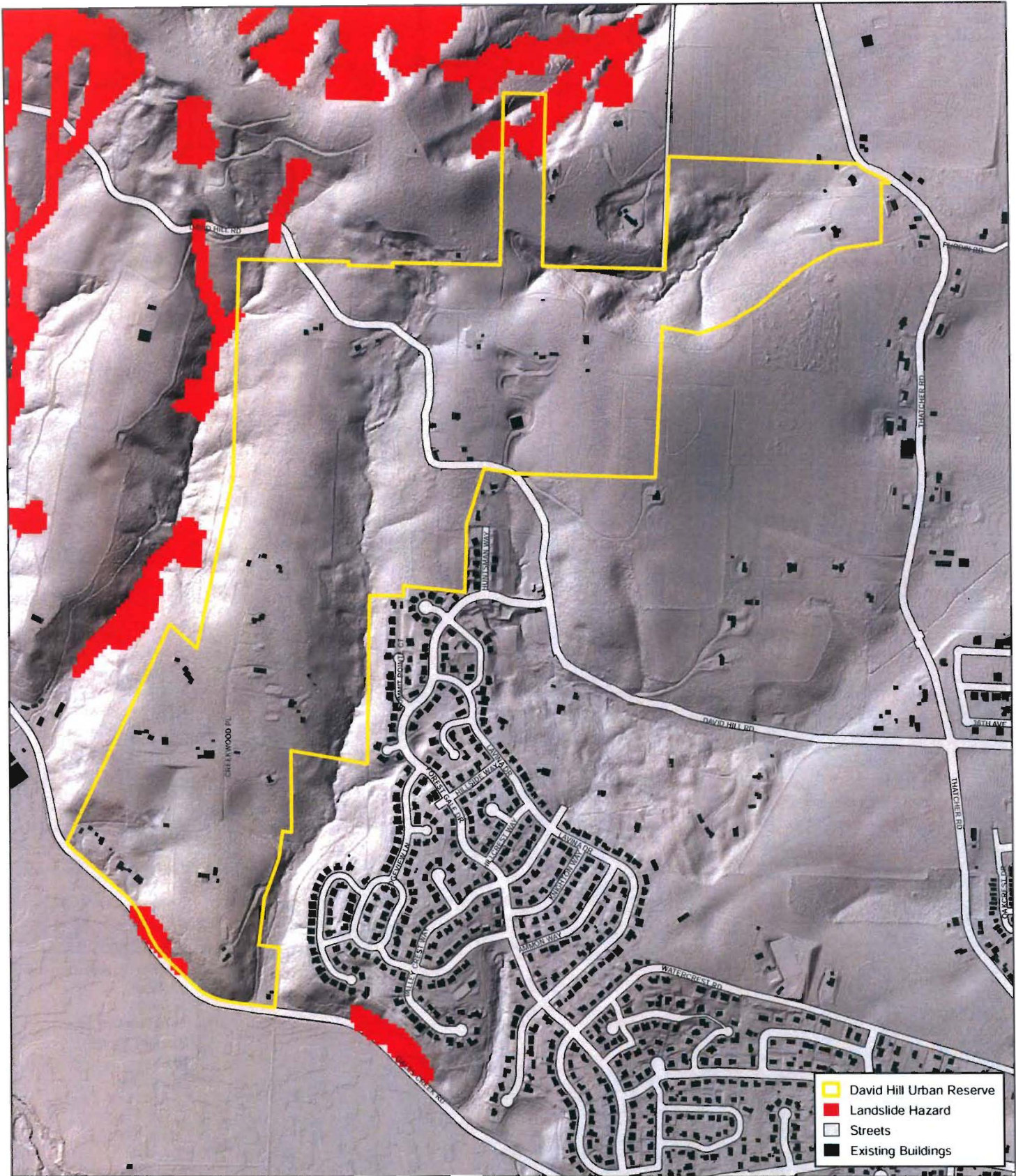
0 500 1,000 2,000
Feet





Version: 06/03/2011





LANDSLIDE HAZARD

Base Map 9
David Hill Urban Reserve Concept Plan

This map depicts landslide hazard zones as developed by the Oregon Department of Geology and Mineral Industries (IMS-22). The map is based on a limited amount of data and cannot serve as a substitute for site-specific investigations by qualified practitioners.

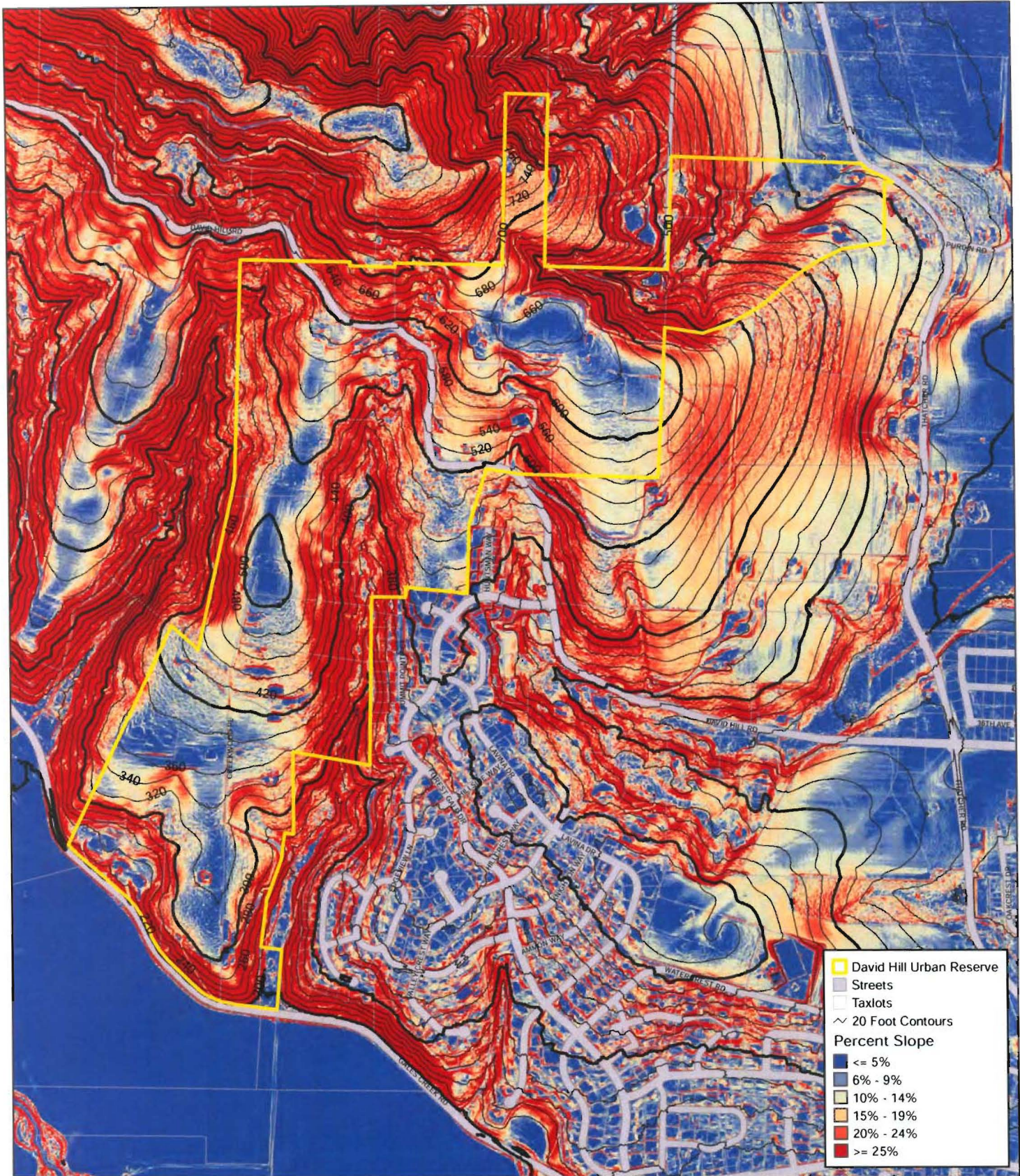
Data on this map is sourced from Metro's R/LIS database, City of Forest Grove, and the State of Oregon. The data was developed at multiple scales and accuracies. No warranty is made on the location accuracy of the features shown in this map.

Version 06/03/2011



0 500 1,000 2,000
Feet





TOPOGRAPHY & PERCENT SLOPE

Base Map 10

David Hill Urban Reserve Concept Plan

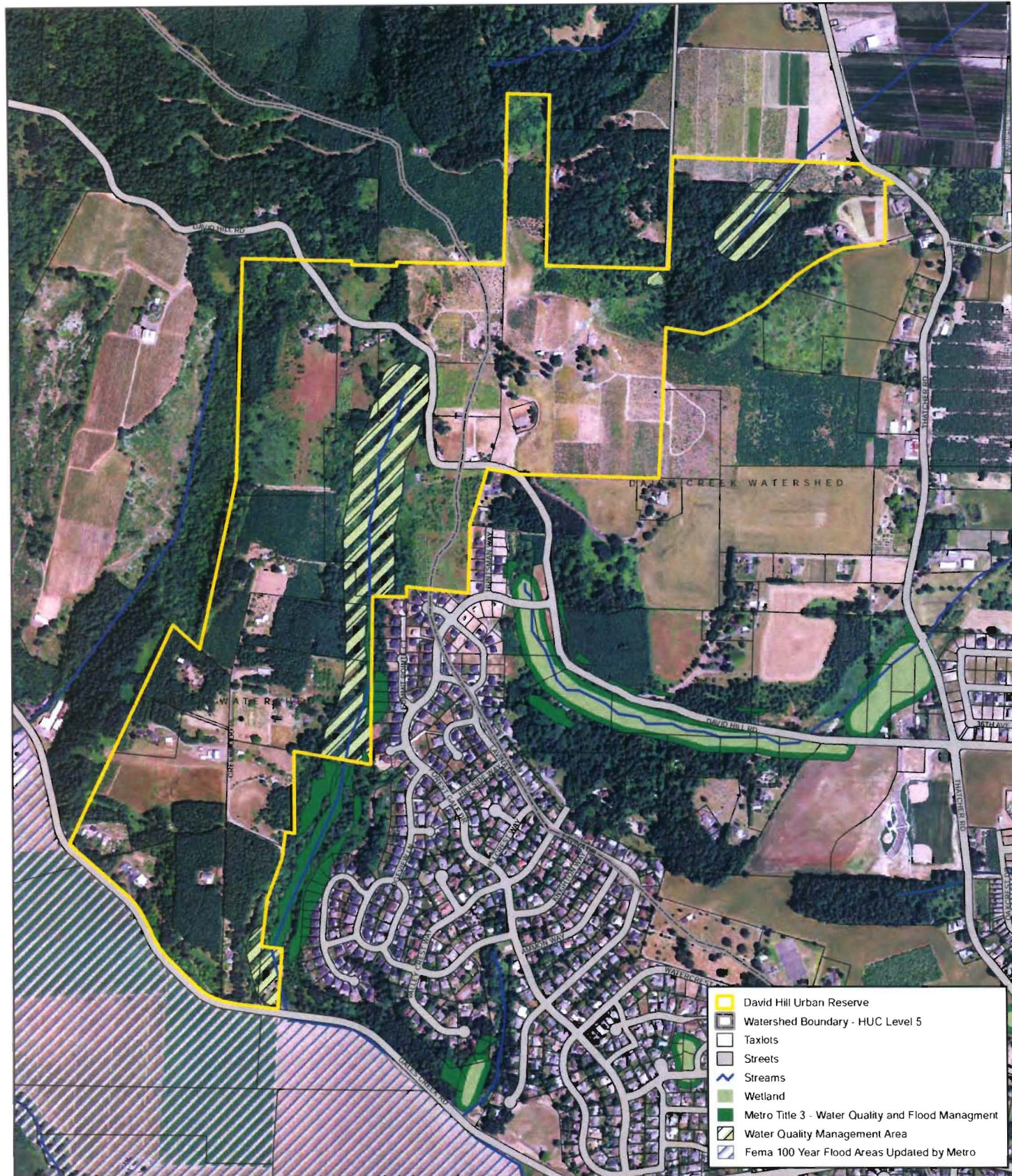
Data on this map is sourced from Metro's RUS database, City of Forest Grove, and the State of Oregon. The data was developed at multiple scales and accuracies. No warranty is made on the location accuracy of the features shown in this map.

Version 06/03/2011



0 500 1,000 2,000 Feet





STREAMS AND WETLANDS

Base Map 11

David Hill Urban Reserve Concept Plan

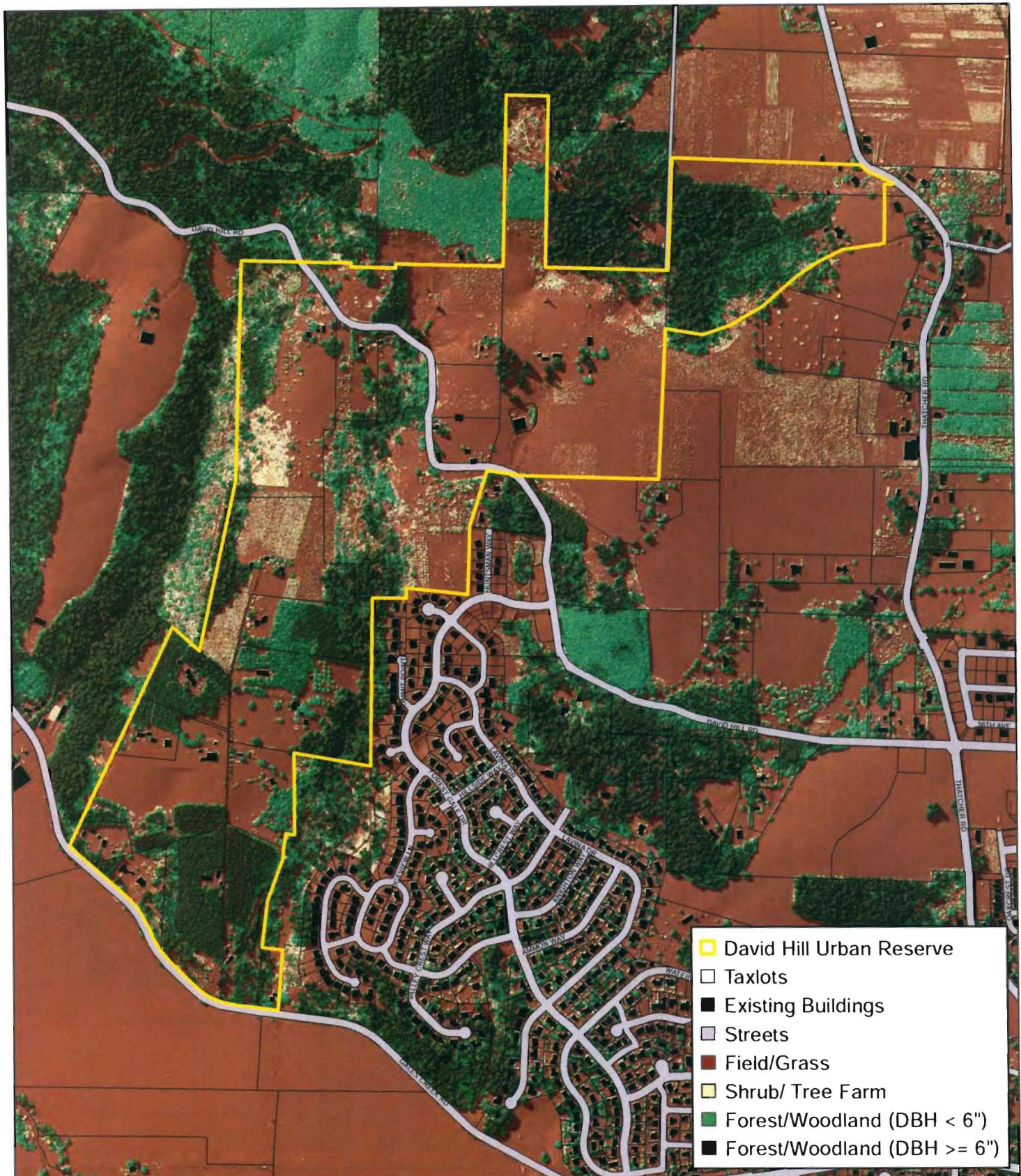
Data in this map is sourced from Metro's RLIS database, City of Forest Grove, U.S. Dept. of Agriculture, and the State of Oregon. The data was developed at multiple scales and accuracies. No warranty is made in the accuracy of the features shown.

Version 06/03/2011



0 500 1,000 2,000
Feet





EXISTING VEGETATION (2007)

Base Map 12

David Hill Urban Reserve Concept Plan

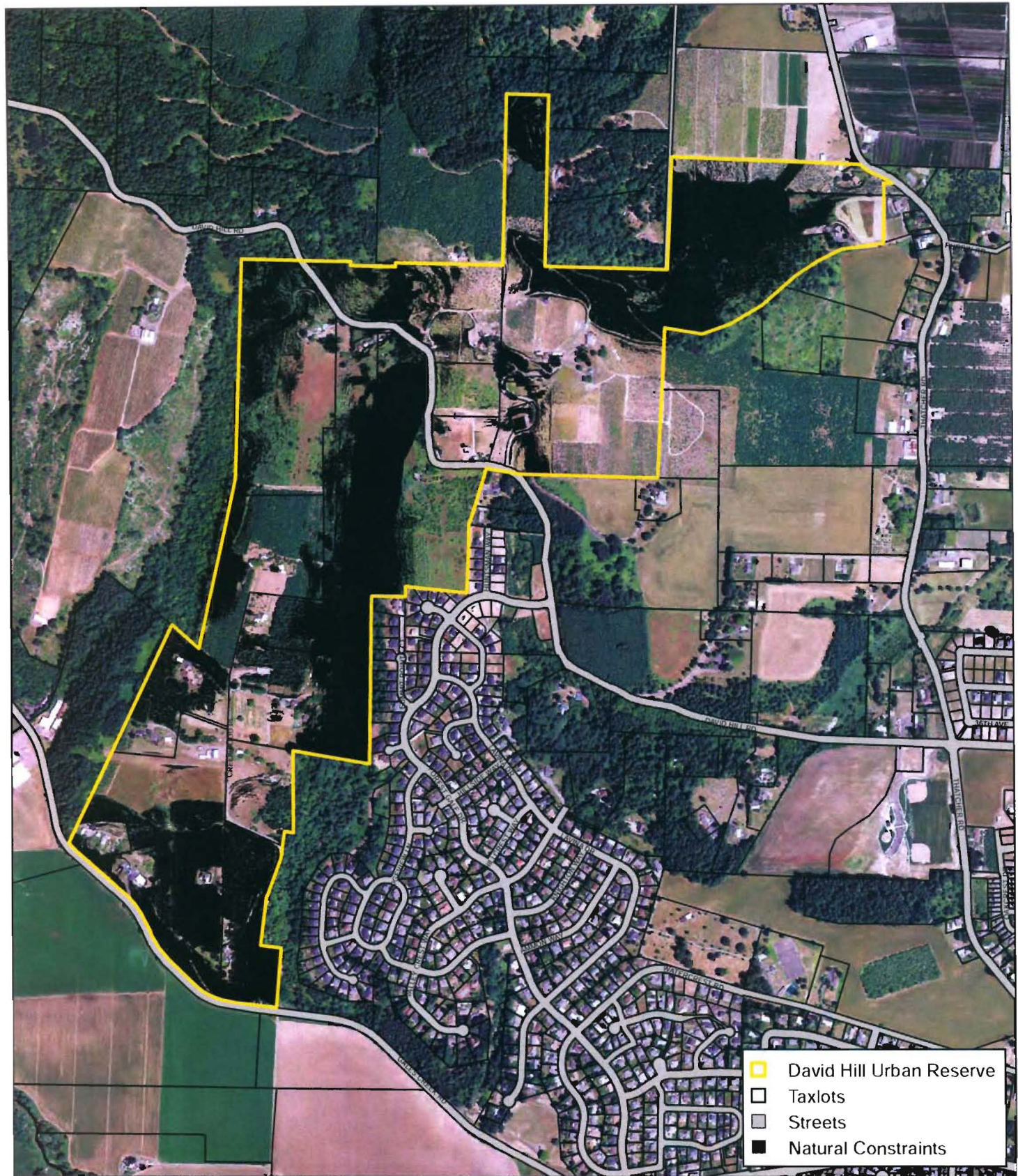
Data on this map is sourced from Metro's RLIS database, City of Forest Grove, and the State of Oregon. The data was developed at multiple scales and accuracies. No warranty is made on the location accuracy of the features shown in this map. (Diameter at breast height (DBH) was calculated from tree height using equations developed by Wang and Harat (1998).

Version 06/03/2011



0 500 1,000 2,000
Feet

vista planning



NATURAL CONSTRAINTS

Base Map 13
David Hill Urban Reserve Concept Plan

Natural constraints include landslide hazard areas, slopes of 25% or more, existing forest or woodlands with large trees (DBH $\geq 6"$), wetlands, and water quality management areas.

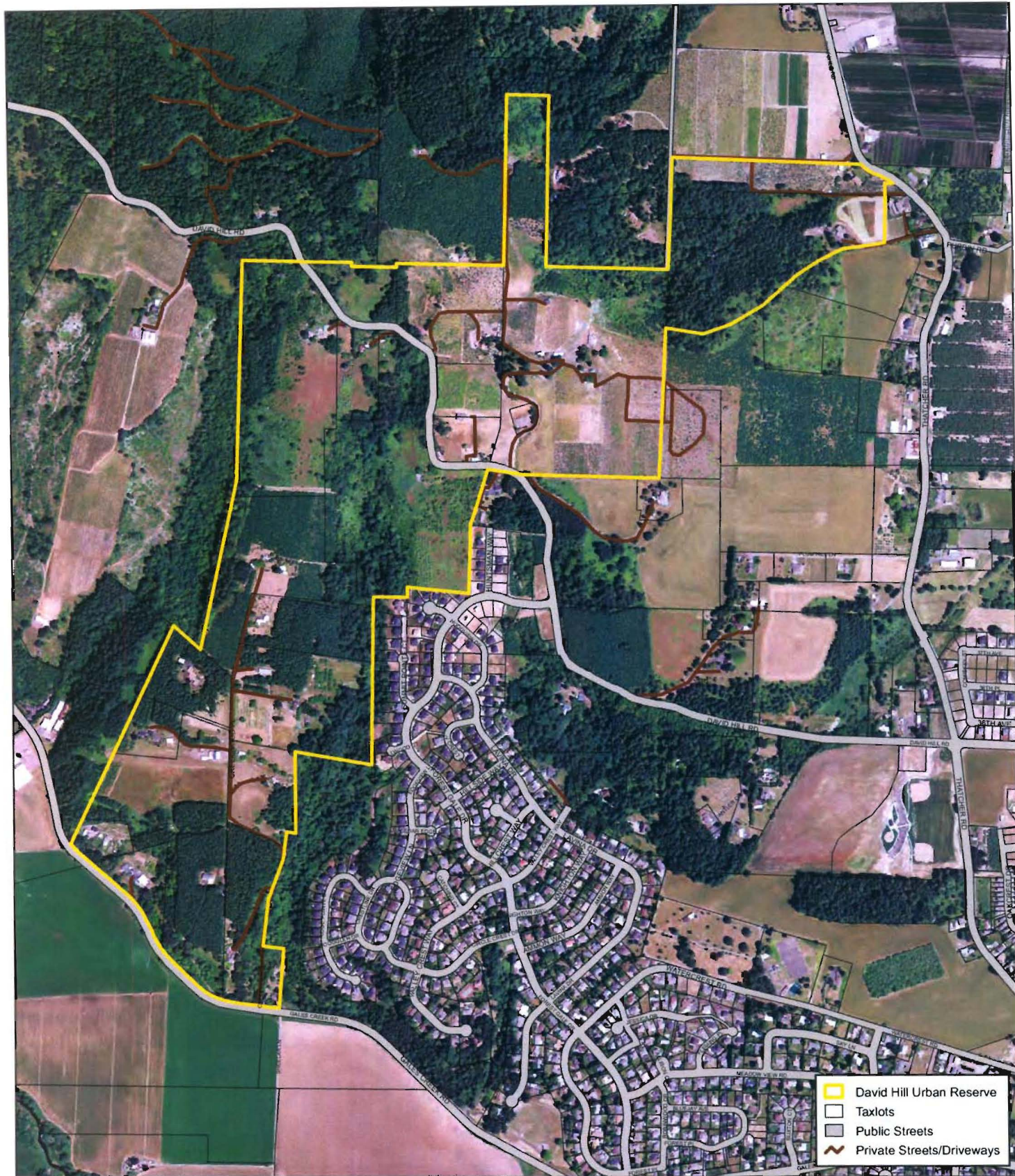
Data in this map is sourced from Metro's RIS database, City of Forest Grove, U.S. Dept. of Agriculture, and the State of Oregon. The data was developed at multiple scales and accuracies. No warranty is made on the accuracy of the features shown.

Version 06/03/2011



0 500 1,000 2,000
Feet





STREETS, ROADS, AND DRIVEWAYS

Base Map 14
David Hill Urban Reserve Concept Plan

Data on this map is sourced from Metro's RLIS database, City of Forest Grove, and the State of Oregon. The data was developed at multiple scales and accuracies. No warranty is made on the location accuracy of the features shown in this map.

Version 06/03/2011



0 500 1,000 2,000
Feet

