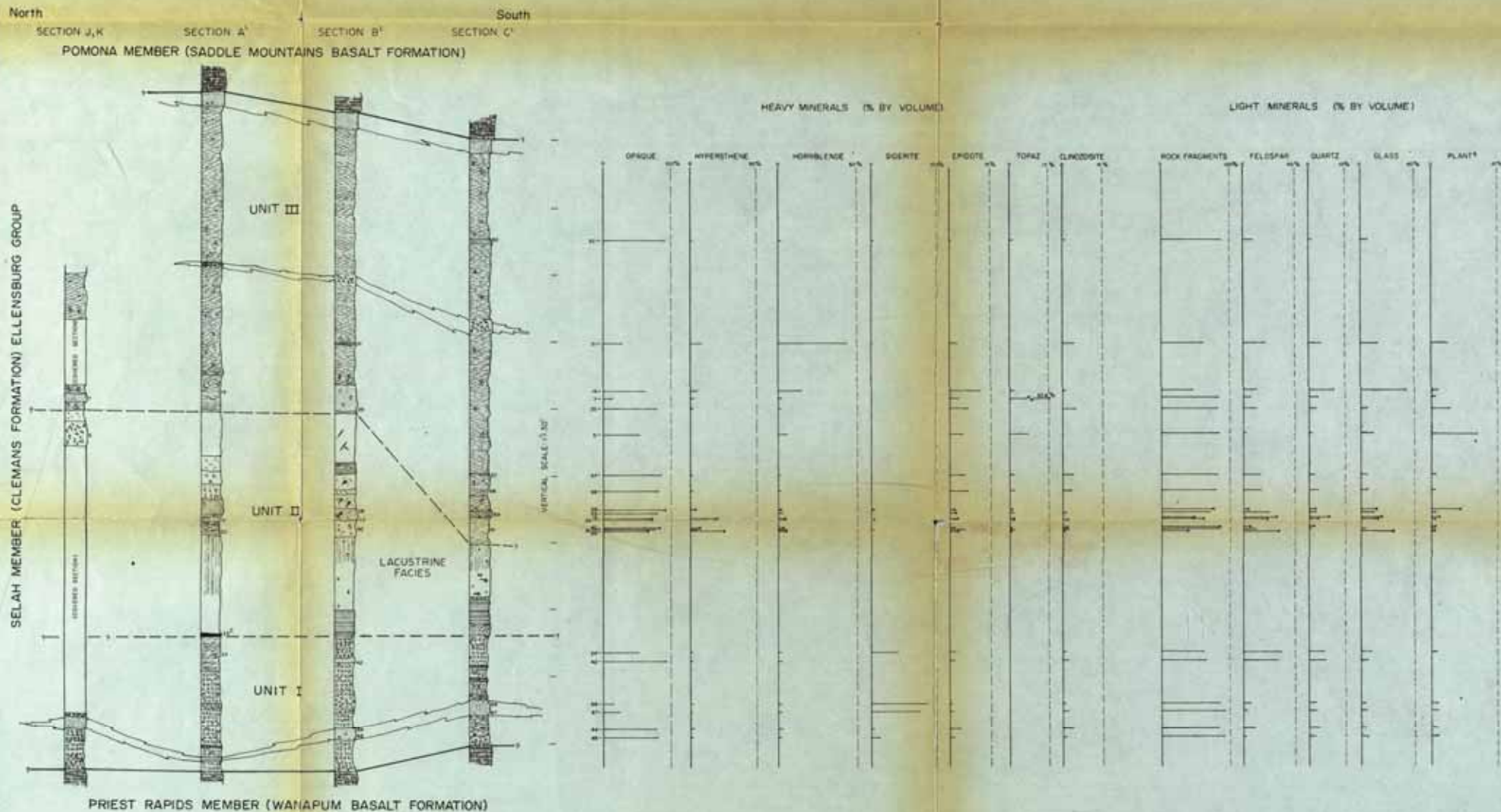


# COMPARISON OF OREGON STRATIGRAPHIC SECTIONS A, B, C, J, AND K



**NOTES:**

1. Stratigraphic sections correlated on datum plane base of Unit II-Lacustrine Facies
2. Thin sections prepared of sample 23, for discussion, see Paleontology
3. Location of fossil planes described in Paleontology

**EXPLANATION**

- |  |  |  |
|--|--|--|
| <ul style="list-style-type: none"> <li> SANDSTONE</li> <li> SILTSTONE</li> <li> CLAYSTONE</li> <li> TUFF</li> <li> PUMICITE</li> <li> COAL</li> <li> TUFFACEOUS</li> </ul> | <ul style="list-style-type: none"> <li> ACCRETIONARY LAPILLI</li> <li> BASALT PEBBLES</li> <li> PUMICE PEBBLES</li> <li> PENCIL FRACTURING</li> <li> SHEAR PLANES</li> <li> LAMINATIONS</li> <li> CONVULSED LAMINATIONS</li> </ul> | <ul style="list-style-type: none"> <li> CARBONACEOUS IMPRINTS</li> <li> LEAF IMPRINTS</li> <li> FISH VERTEBRAE</li> <li> SULFIDE CRYSTALS</li> <li> MINERAL PERCENTAGES FOR UNIT II-LACUSTRINE FACIES</li> </ul> |
|--|--|--|