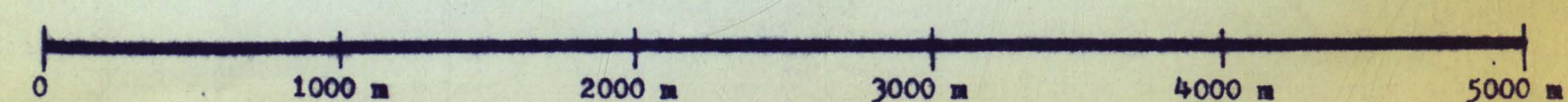
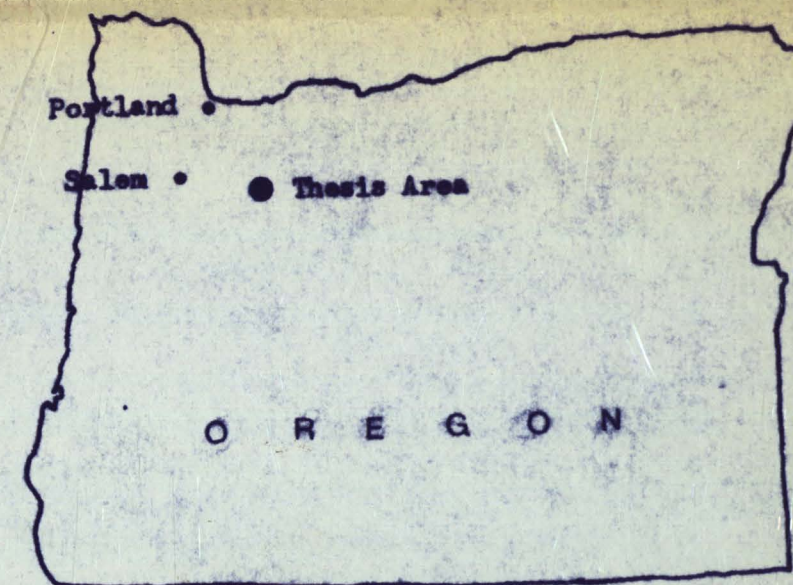
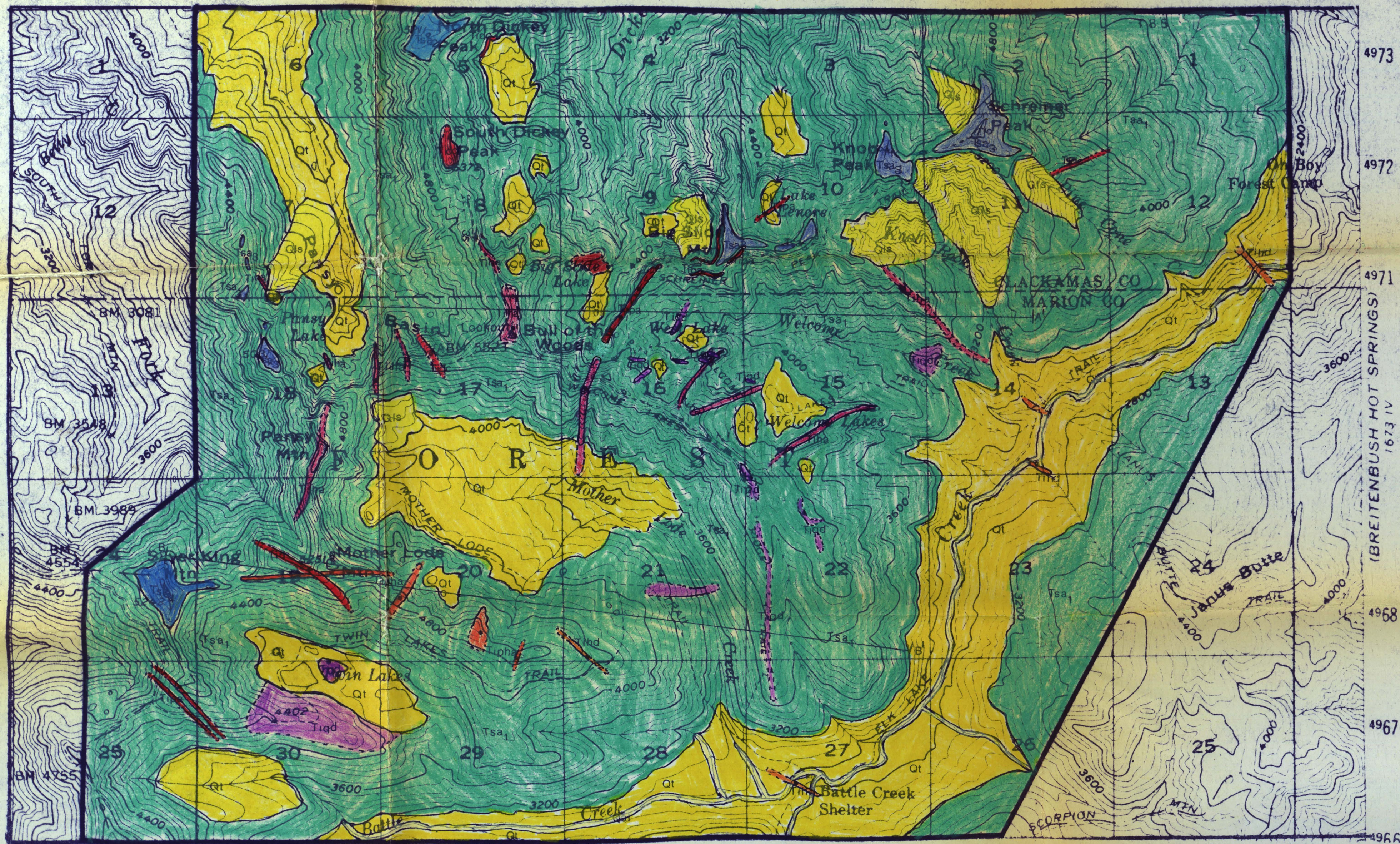


GEOLOGIC MAP OF THE BULL OF THE WOODS AREA, OREGON



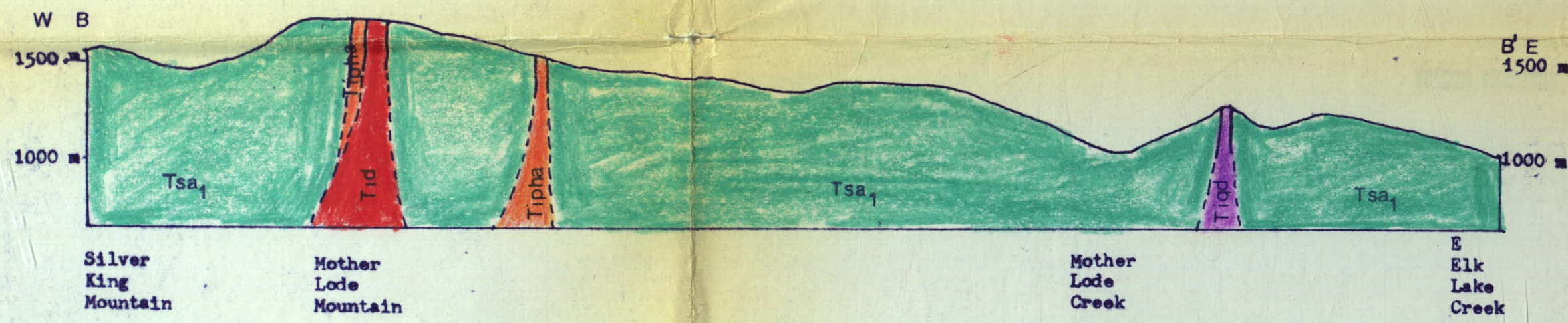
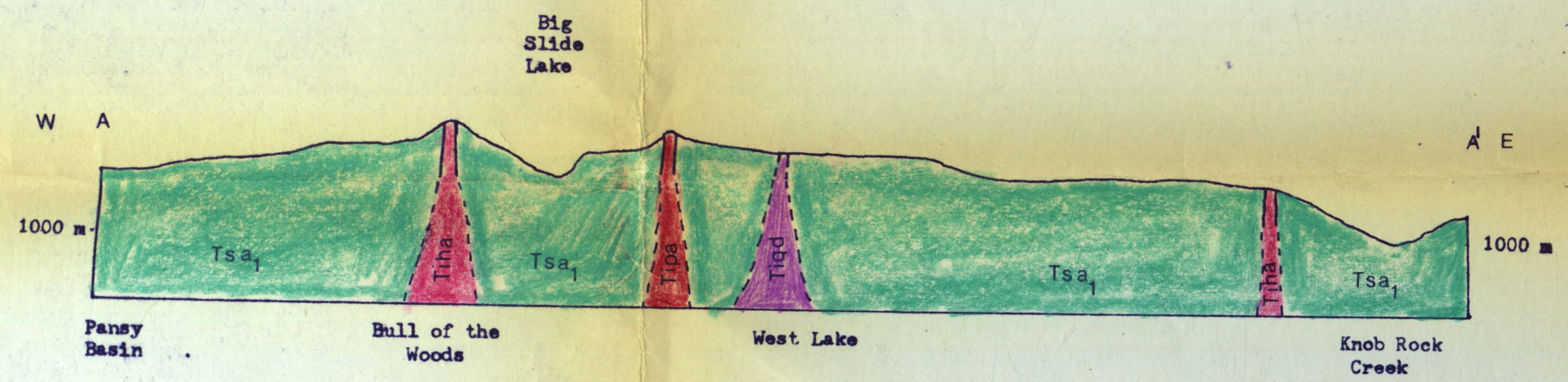
SCALE

1 : 24000

One centimeter equals 240 meters.

Horizontal scale equals vertical scale.

Contour Interval 80 Feet



QUATERNARY

LATE MIOCENE

MIocene

Sardine Formation

STRATIFIED ROCKS

- Qal Alluvium
- Qls Landslide Debris
- Qt Glacial Drift

- Tsa₄ Hornblende Andesite Flow of Silver King Mountain
- Tsa₃ Andesite Lava of Schreiner Peak
- Tsa₂ Hornblende Ignimbrite of North Dickey Peak
- Tsa₁ Tuff of Pansy Basin

INTRUSIVE ROCKS

- T1pa Pyroxene Andesite Porphyry of Big Slide Mountain
- T1pha Pyroxene-Hornblende Andesite Porphyry of Mother Lode Mountain
- T1ha Hornblende Andesite Porphyry of Bull-of-the-Woods
- T1gd Hornblende Quarts Diorite Porphyry of Twin Lakes
- T1hd Hornblende Diorite of Elk Lake Creek
- T1dc Pyroxene-Hornblende Dacite of South Dickey Peak
- T1d Hornblende Quarts Diorite of Pansy Mountain

MAP SYMBOLS

- Contact (covered)
- g Bedding Attitude
- INAA Sample Location