

**SPR-821: DEVELOP NEW METHODS TO USE ODOT WEIGH-IN-MOTION DATA
FOR PREDICTING FREIGHT FLOW AND/OR COMMODITY PATTERNS**

EROAD and WIM Weight Comparisons

by

Avinash Unnikrishnan, Associate Professor
Miguel Figliozzi, Professor
Jason C. Anderson, Research Associate
Portland State University

and

Sal Hernandez, Associate Professor
Oregon State University

for

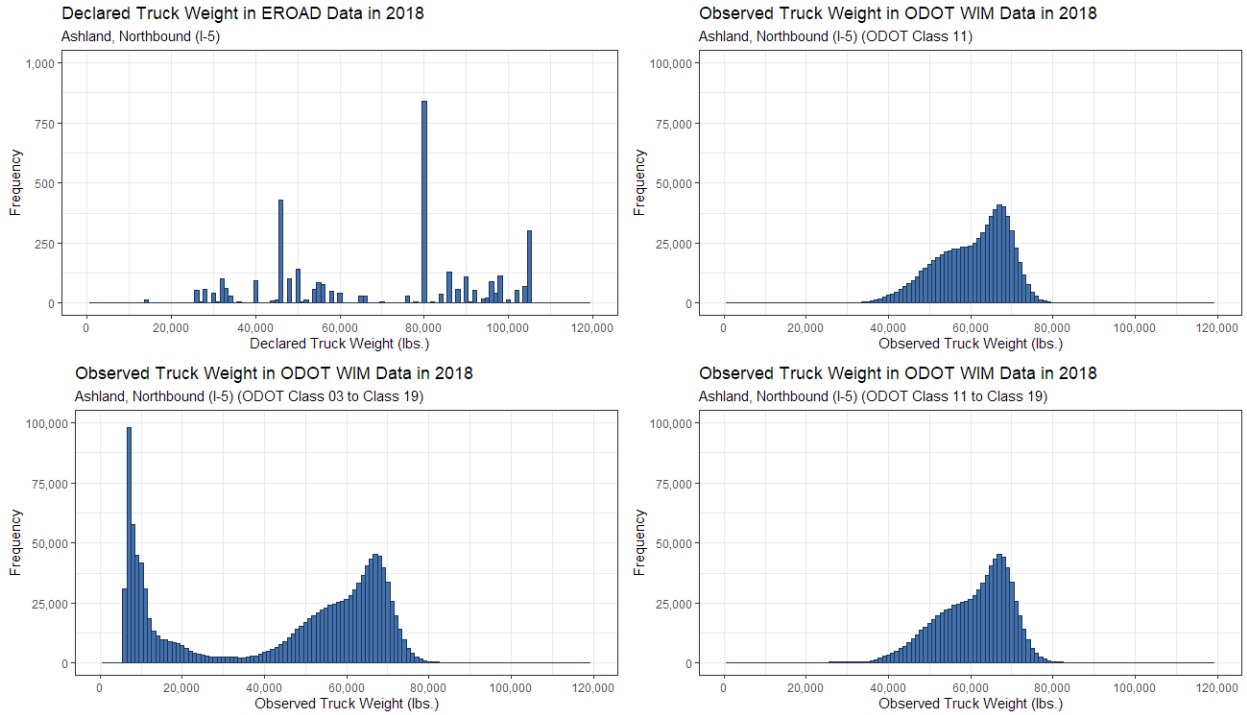
Oregon Department of Transportation
Research Section
555 13th Street NE, Suite 1
Salem OR 97301

and

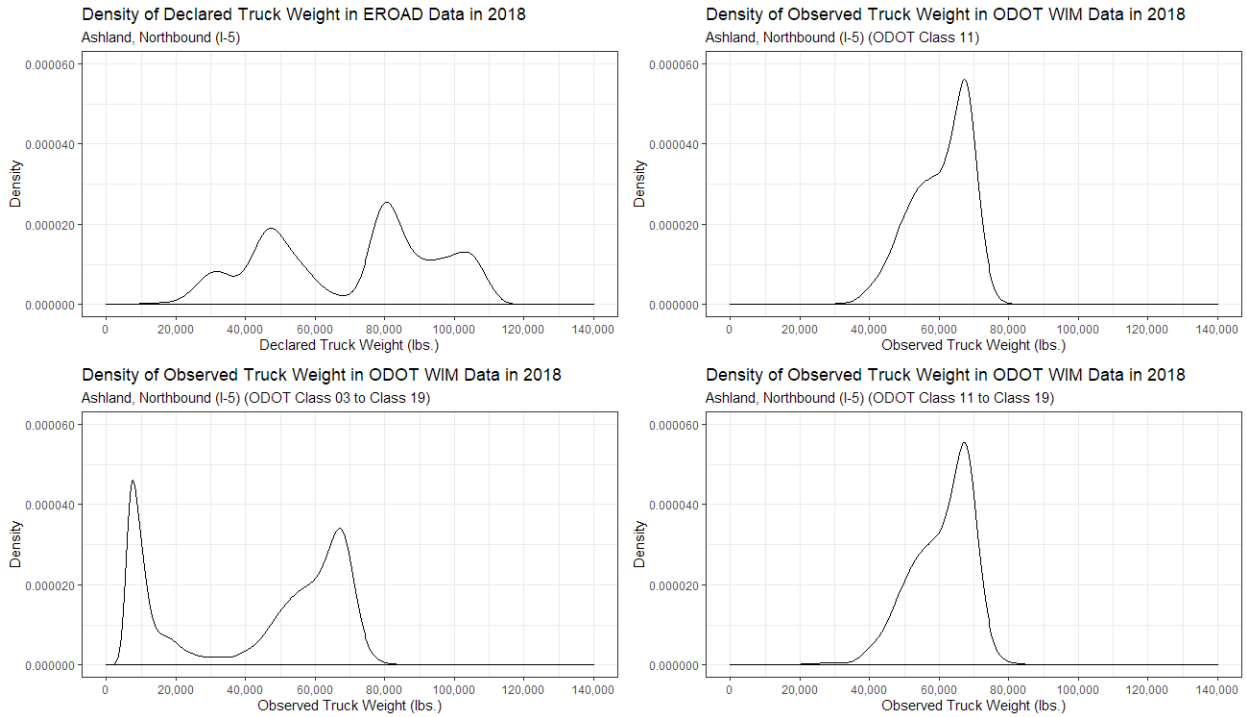
Federal Highway Administration
1200 New Jersey Avenue SE
Washington, DC 20590

LIST OF FIGURES

| | |
|---|----|
| Figure 1: (a) EROAD and WIM Weight Distribution Comparison at Ashland (NB) in 2018 and (b) EROAD and WIM Weight Density Comparison at Ashland (NB) in 2018 | 1 |
| Figure 2: (a) EROAD and WIM Weight Distribution Comparison at Ashland (SB) in 2018 and (b) EROAD and WIM Weight Density Comparison at Ashland (SB) in 2018 | 2 |
| Figure 3: (a) EROAD and WIM Weight Distribution Comparison at Woodburn (NB) in 2018 and (b) EROAD and WIM Weight Density Comparison at Woodburn (NB) in 2018 | 3 |
| Figure 4: (a) EROAD and WIM Weight Distribution Comparison at Woodburn (SB) in 2018 and (b) EROAD and WIM Weight Density Comparison at Woodburn (SB) in 2018 | 4 |
| Figure 5: (a) EROAD and WIM Weight Distribution Comparison at Cascade Locks (EB) in 2018 and (b) EROAD and WIM Weight Density Comparison at Cascade Locks (EB) in 2018 | 5 |
| Figure 6: (a) EROAD and WIM Weight Distribution Comparison at Wyeth (WB) in 2018 and (b) EROAD and WIM Weight Density Comparison at Wyeth (WB) in 2018..... | 6 |
| Figure 7: (a) EROAD and WIM Weight Distribution Comparison at Olds Ferry (EB) in 2018 and (b) EROAD and WIM Weight Density Comparison at Olds Ferry (EB) in 2018..... | 7 |
| Figure 8: (a) EROAD and WIM Weight Distribution Comparison at Farewell Bend (WB) in 2018 and (b) EROAD and WIM Weight Density Comparison at Farewell Bend (WB) in 2018..... | 8 |
| Figure 9: (a) EROAD and WIM Weight Distribution Comparison at Klamath Falls (NB) in 2018 and (b) EROAD and WIM Weight Density Comparison at Klamath Falls (NB) in 2018 | 9 |
| Figure 10: (a) EROAD and WIM Weight Distribution Comparison at Klamath Falls (SB) in 2018 and (b) EROAD and WIM Weight Density Comparison at Klamath Falls (SB) in 2018 | 10 |

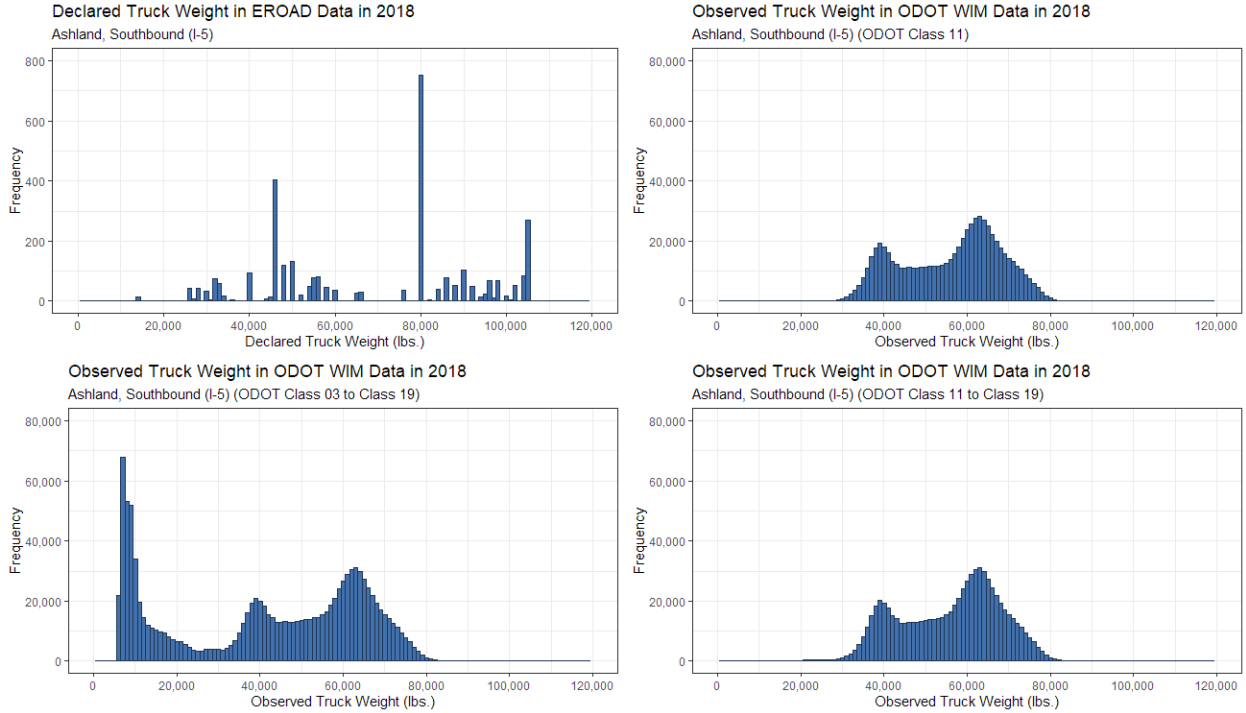


(a)

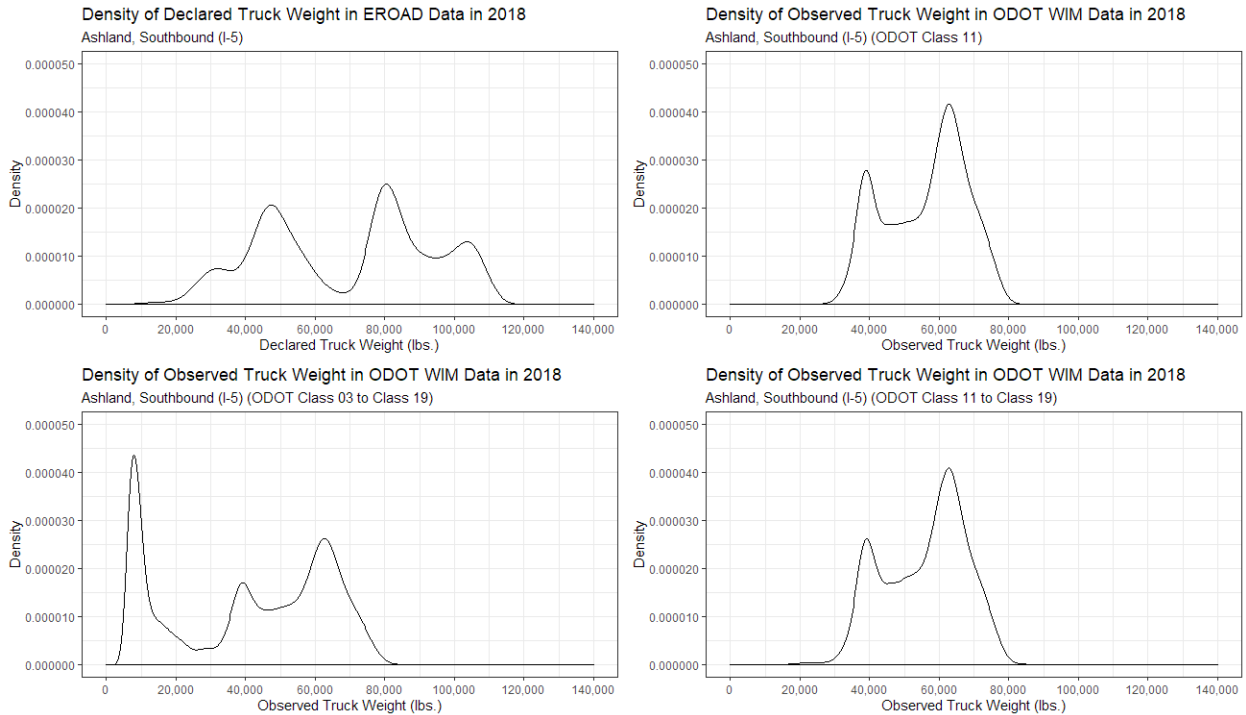


(b)

Figure 1: (a) EROAD and WIM Weight Distribution Comparison at Ashland (NB) in 2018 and (b) EROAD and WIM Weight Density Comparison at Ashland (NB) in 2018

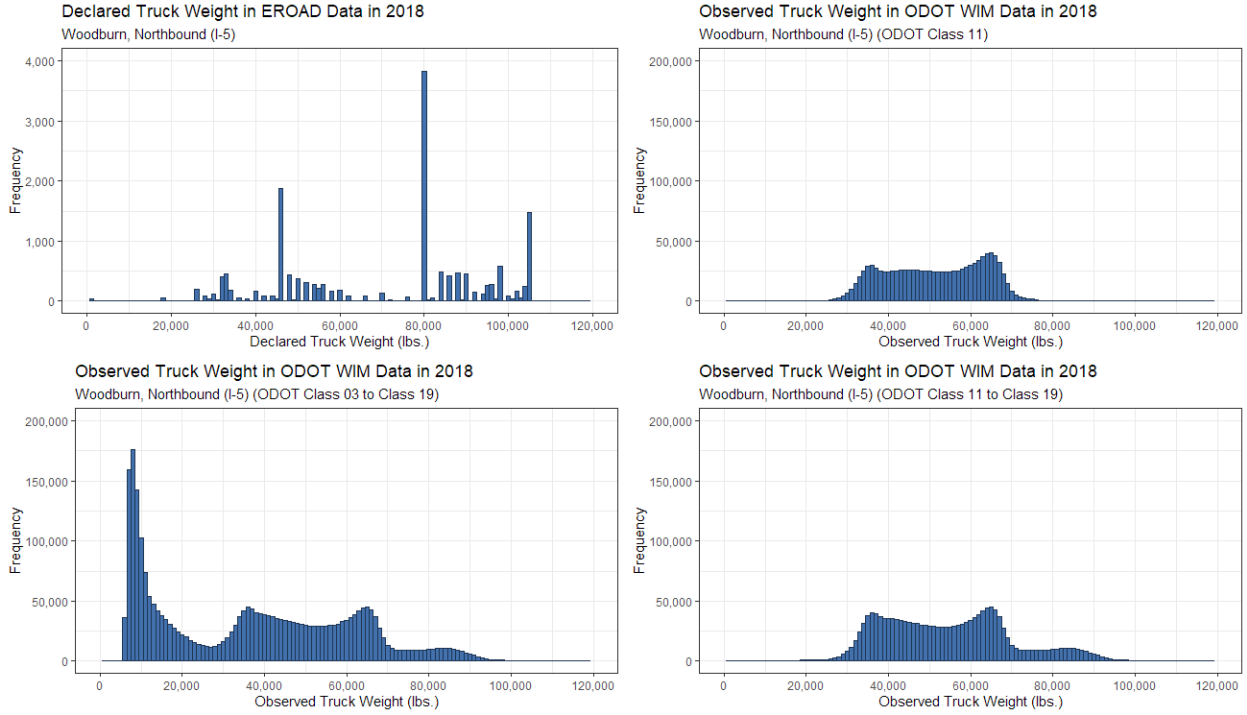


(a)

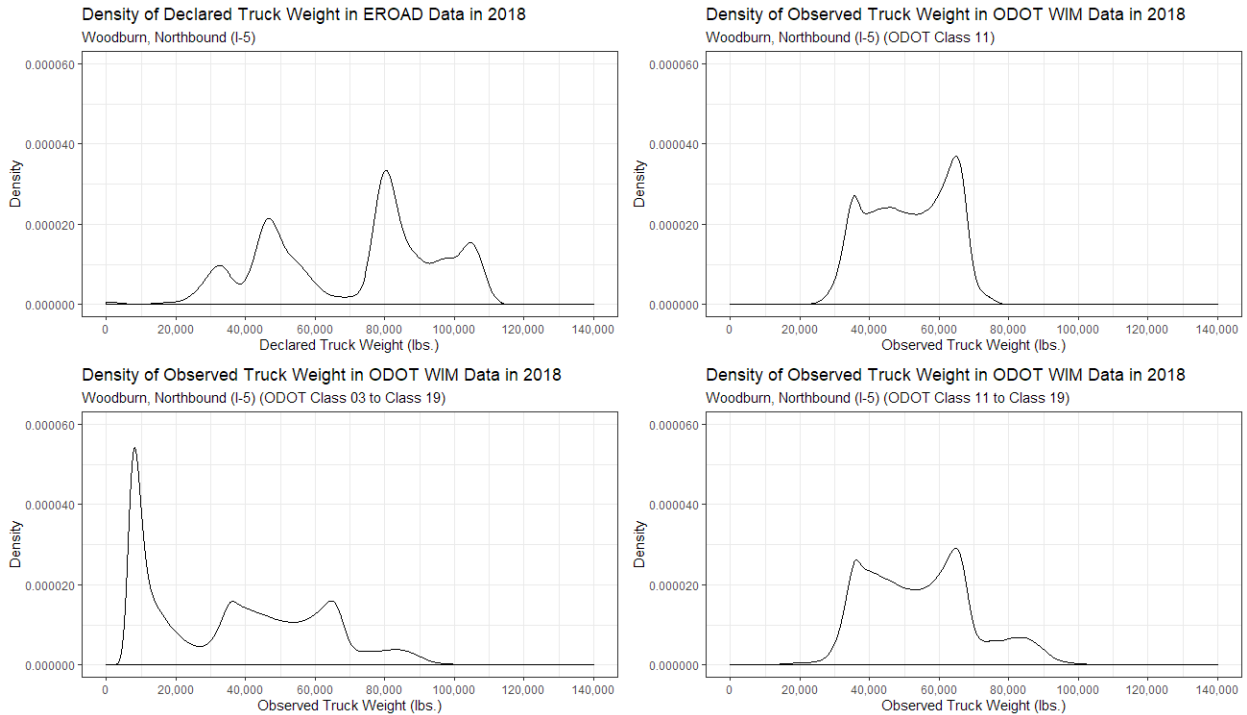


(b)

Figure 2: (a) EROAD and WIM Weight Distribution Comparison at Ashland (SB) in 2018 and (b) EROAD and WIM Weight Density Comparison at Ashland (SB) in 2018

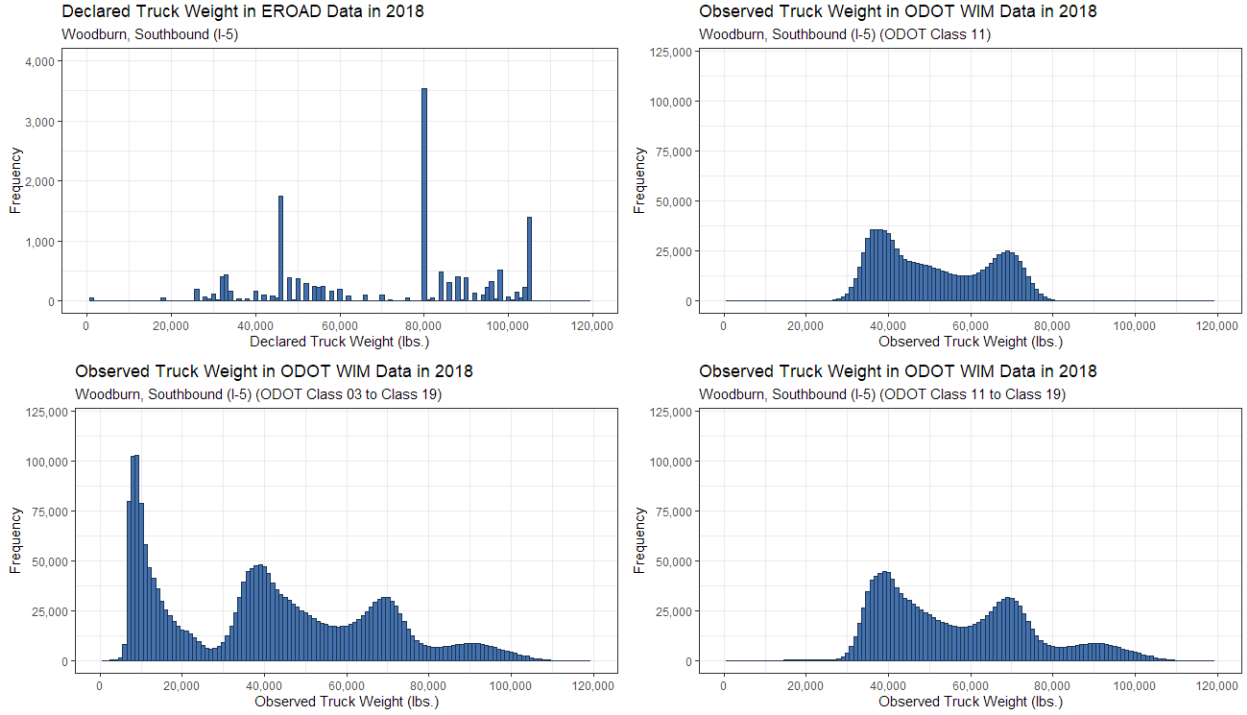


(a)

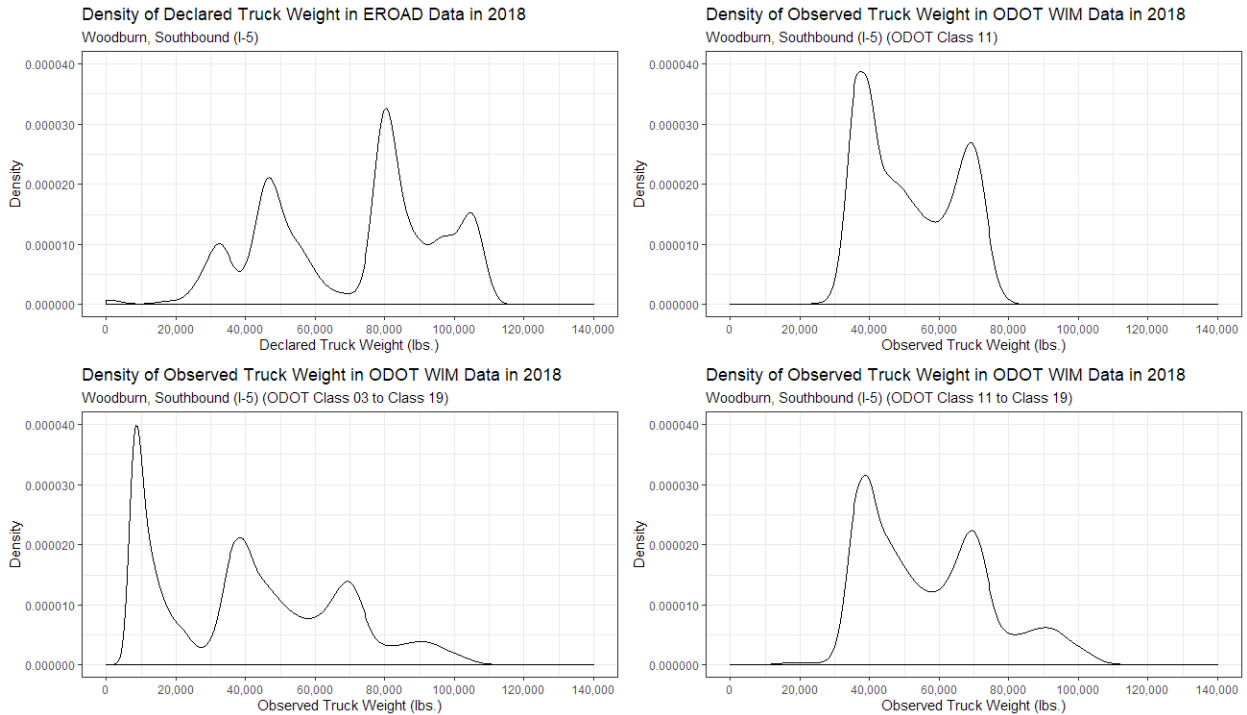


(b)

Figure 3: (a) EROAD and WIM Weight Distribution Comparison at Woodburn (NB) in 2018 and (b) EROAD and WIM Weight Density Comparison at Woodburn (NB) in 2018

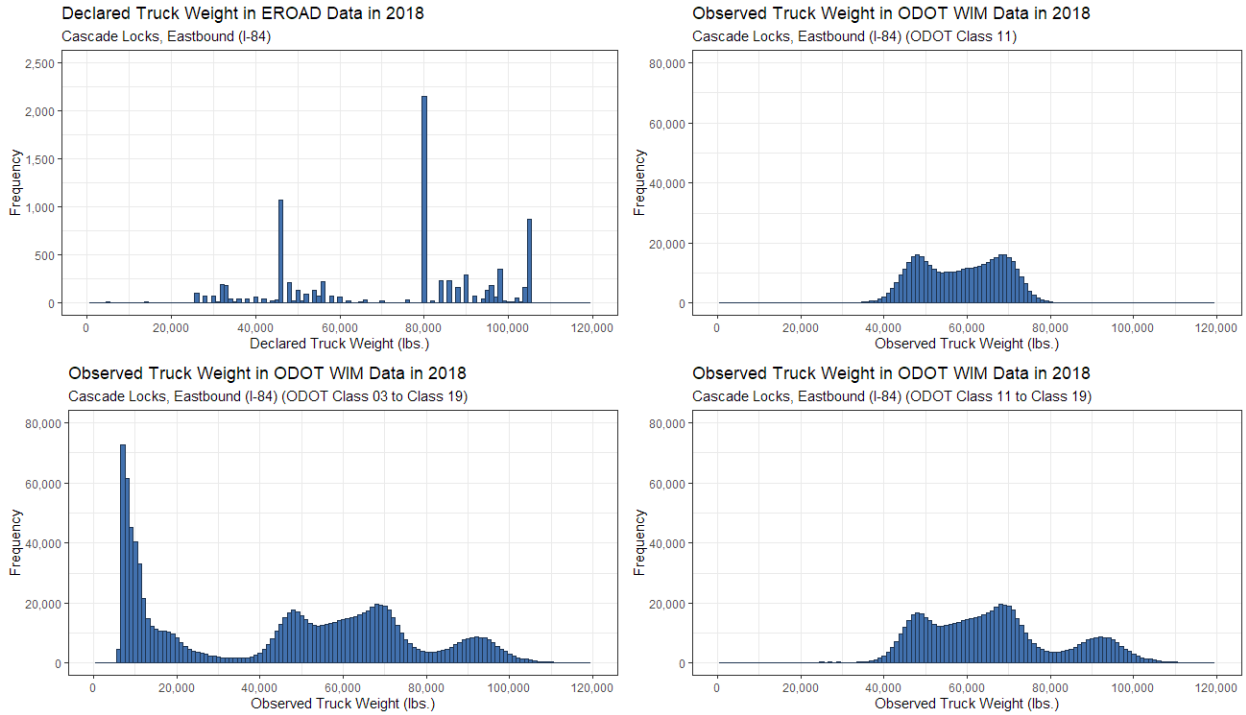


(a)

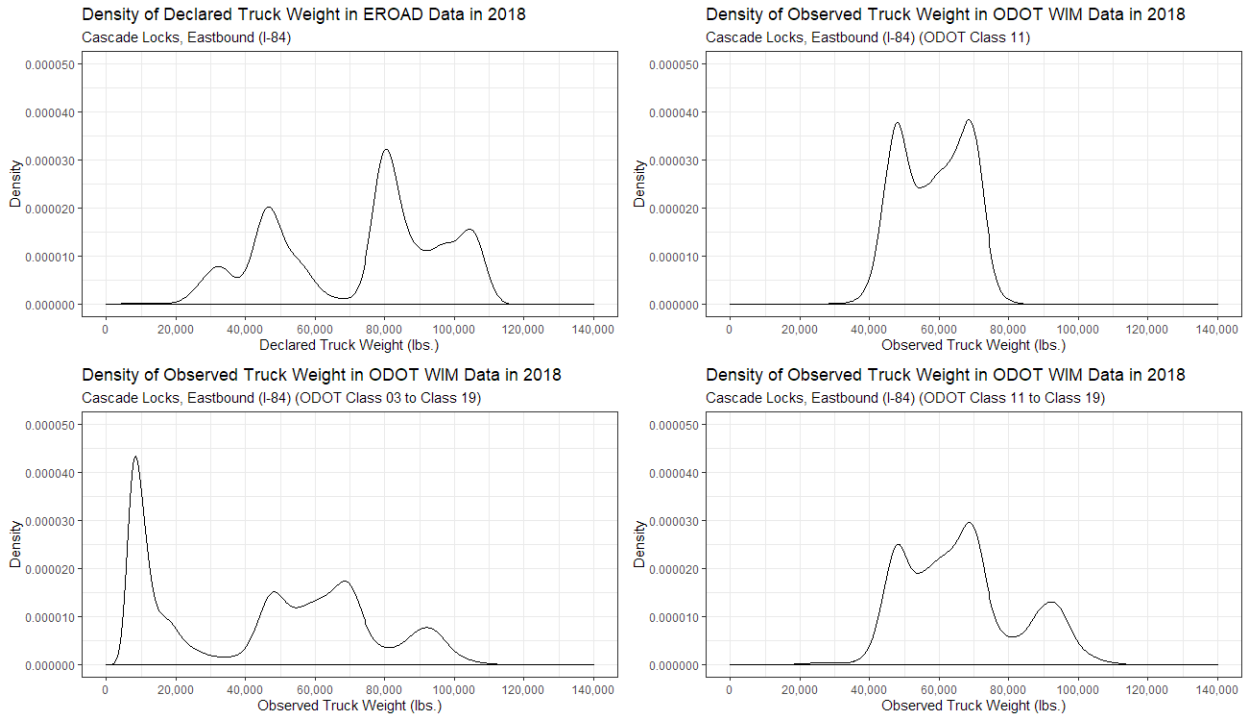


(b)

Figure 4: (a) EROAD and WIM Weight Distribution Comparison at Woodburn (SB) in 2018 and (b) EROAD and WIM Weight Density Comparison at Woodburn (SB) in 2018

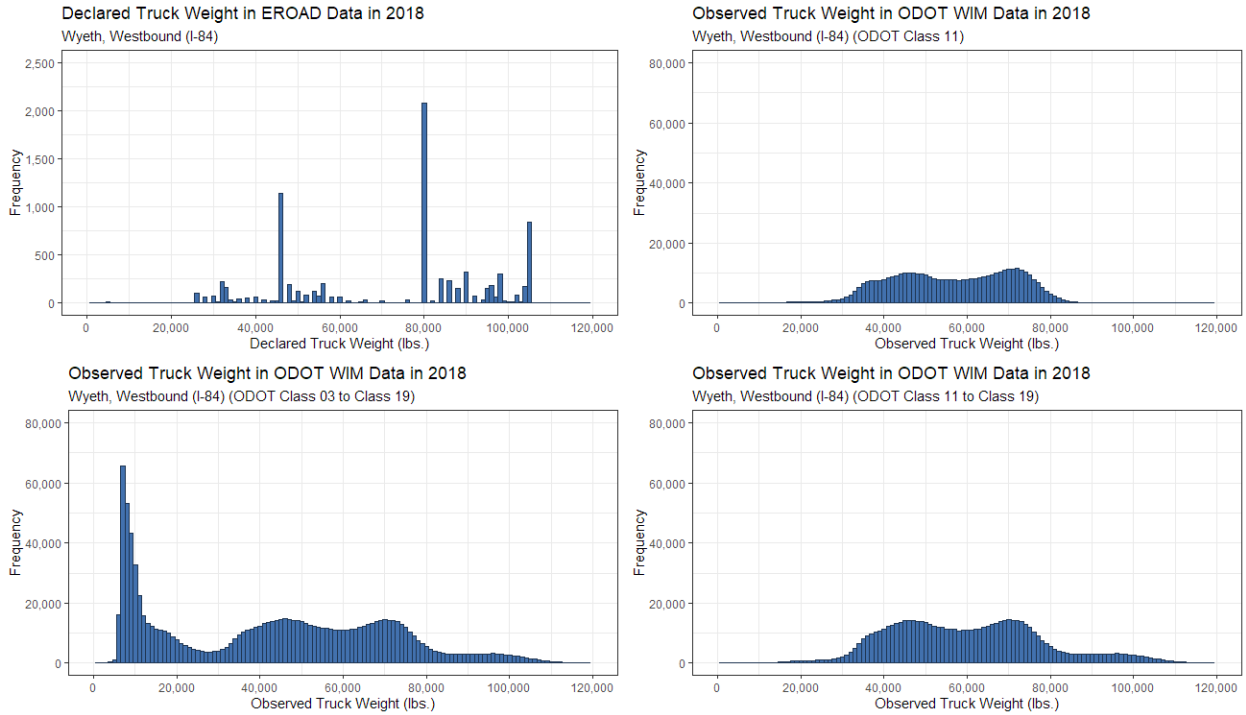


(a)

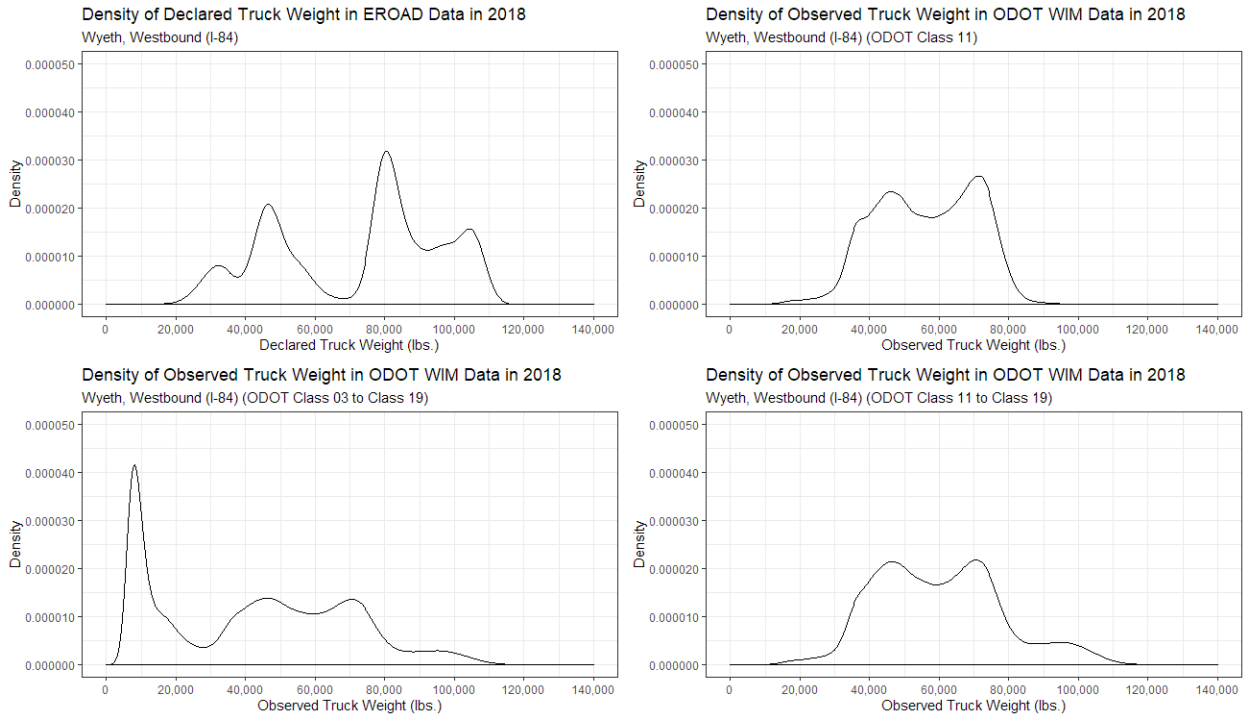


(b)

Figure 5: (a) EROAD and WIM Weight Distribution Comparison at Cascade Locks (EB) in 2018 and (b) EROAD and WIM Weight Density Comparison at Cascade Locks (EB) in 2018

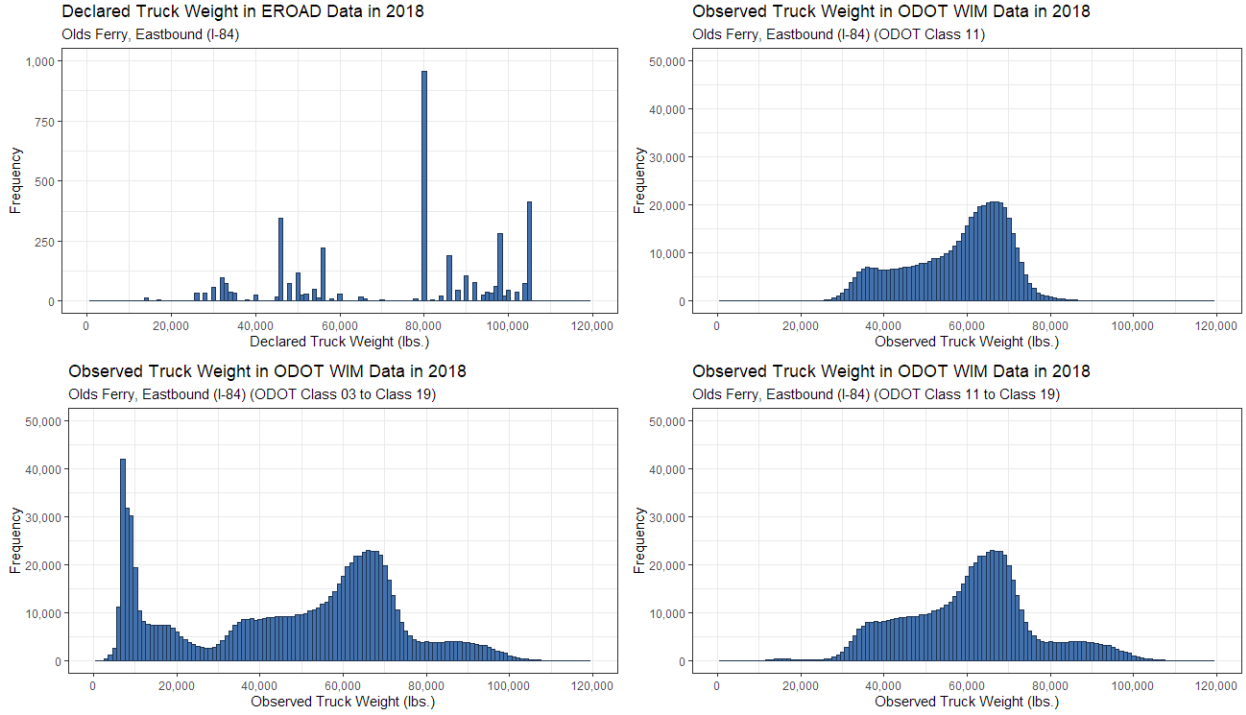


(a)

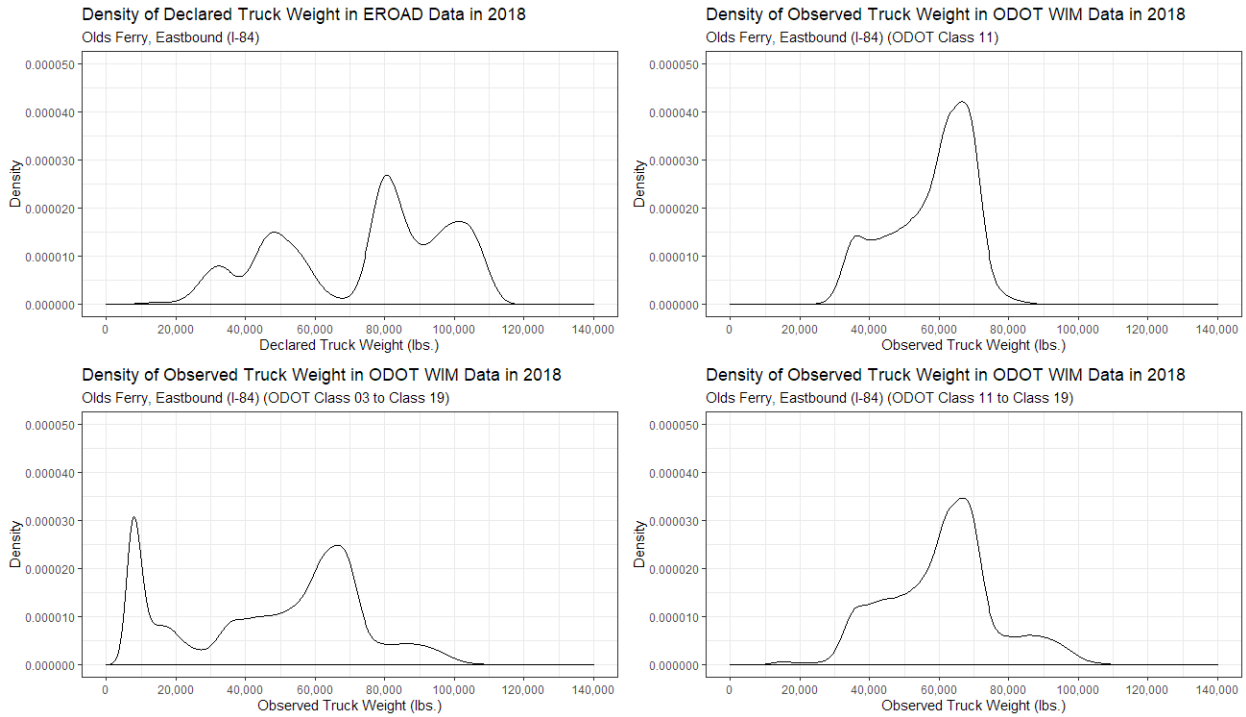


(b)

Figure 6: (a) EROAD and WIM Weight Distribution Comparison at Wyeth (WB) in 2018 and (b) EROAD and WIM Weight Density Comparison at Wyeth (WB) in 2018

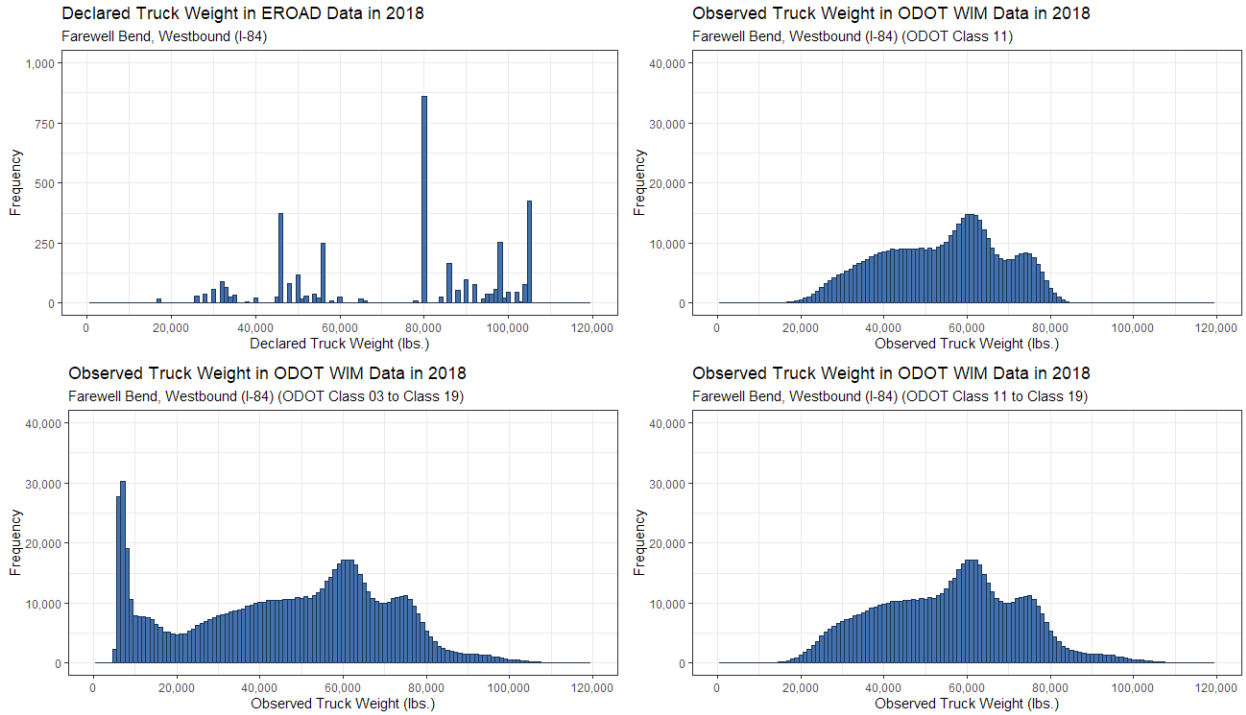


(a)

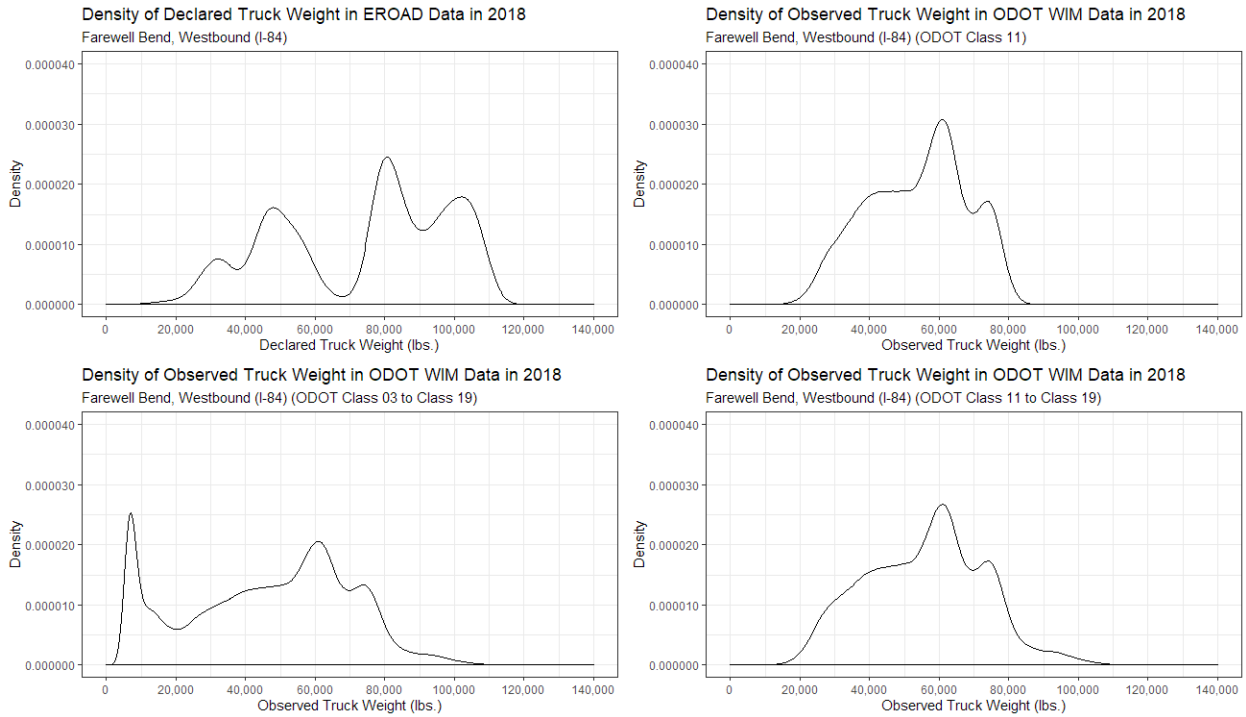


(b)

Figure 7: (a) EROAD and WIM Weight Distribution Comparison at Olds Ferry (EB) in 2018 and (b) EROAD and WIM Weight Density Comparison at Olds Ferry (EB) in 2018

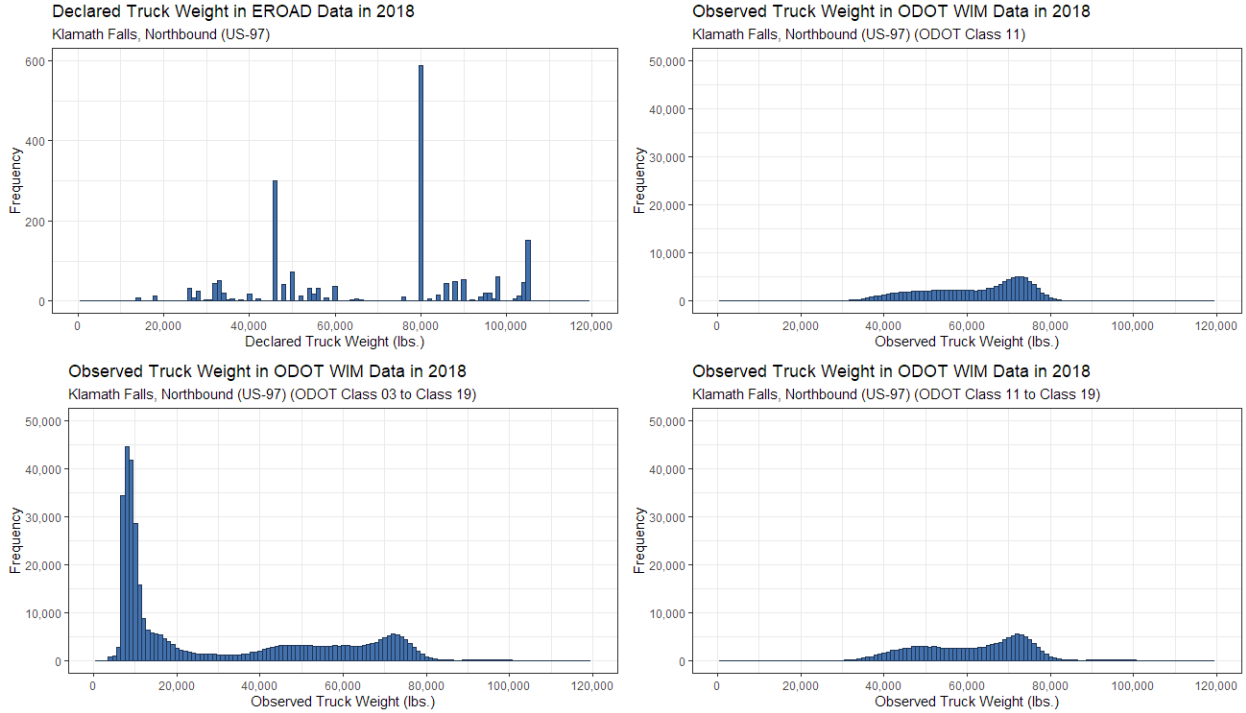


(a)

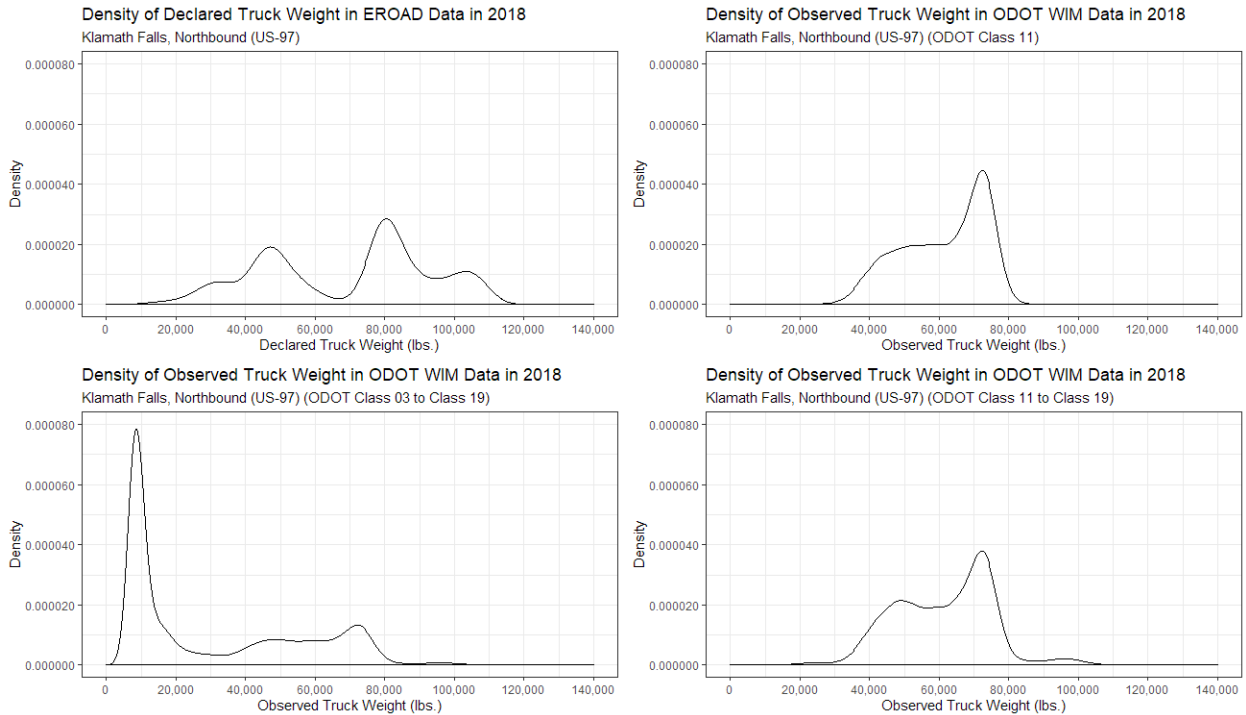


(b)

Figure 8: (a) EROAD and WIM Weight Distribution Comparison at Farewell Bend (WB) in 2018 and (b) EROAD and WIM Weight Density Comparison at Farewell Bend (WB) in 2018

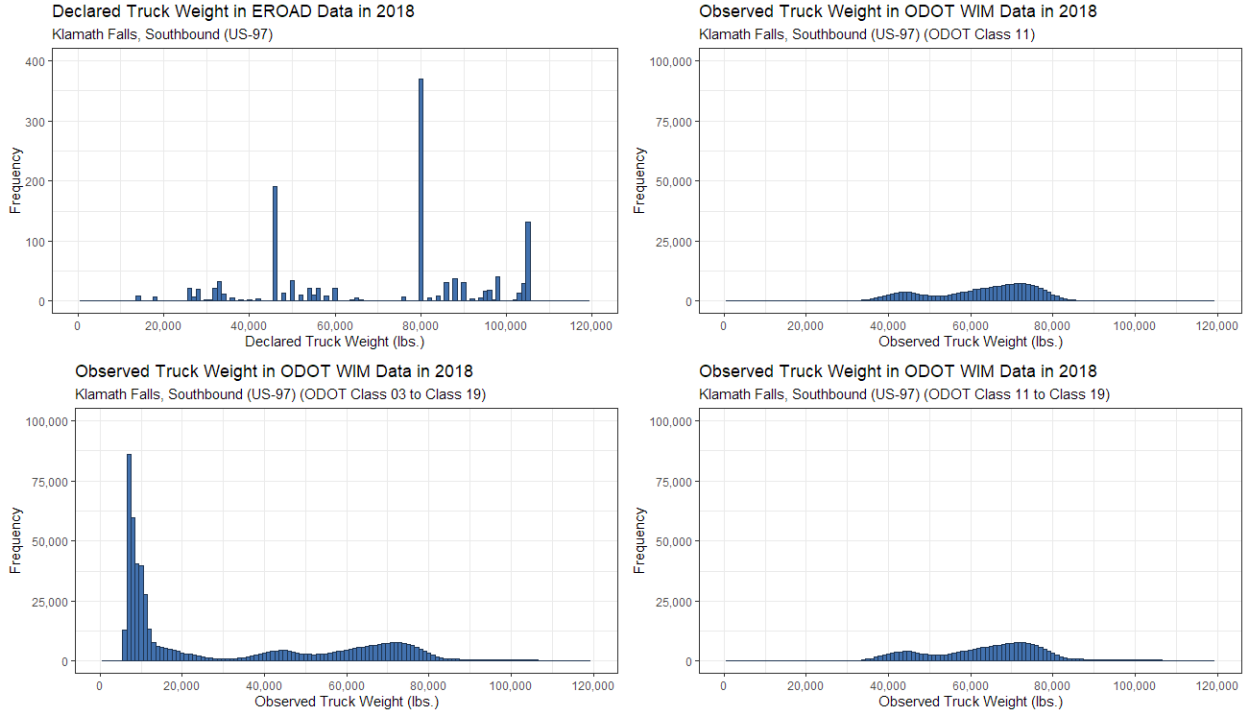


(a)

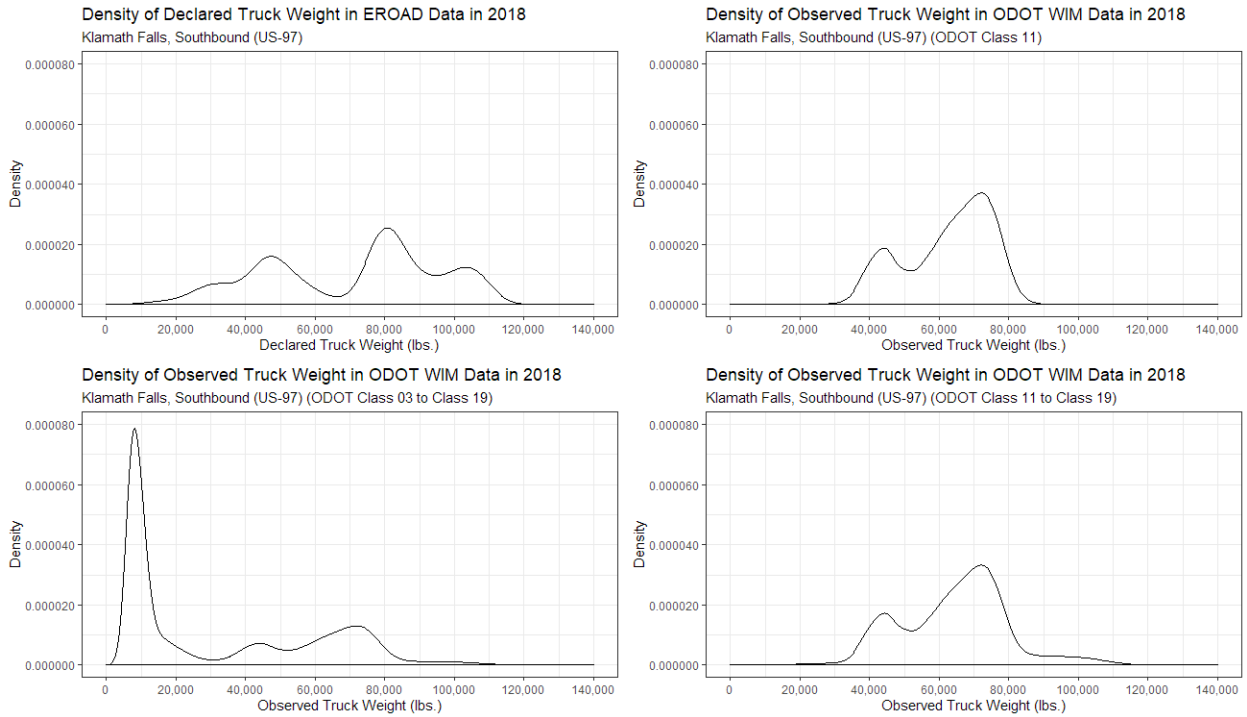


(b)

Figure 9: (a) EROAD and WIM Weight Distribution Comparison at Klamath Falls (NB) in 2018 and (b) EROAD and WIM Weight Density Comparison at Klamath Falls (NB) in 2018



(a)



(b)

Figure 10: (a) EROAD and WIM Weight Distribution Comparison at Klamath Falls (SB) in 2018 and (b) EROAD and WIM Weight Distribution Comparison at Klamath Falls (SB) in 2018