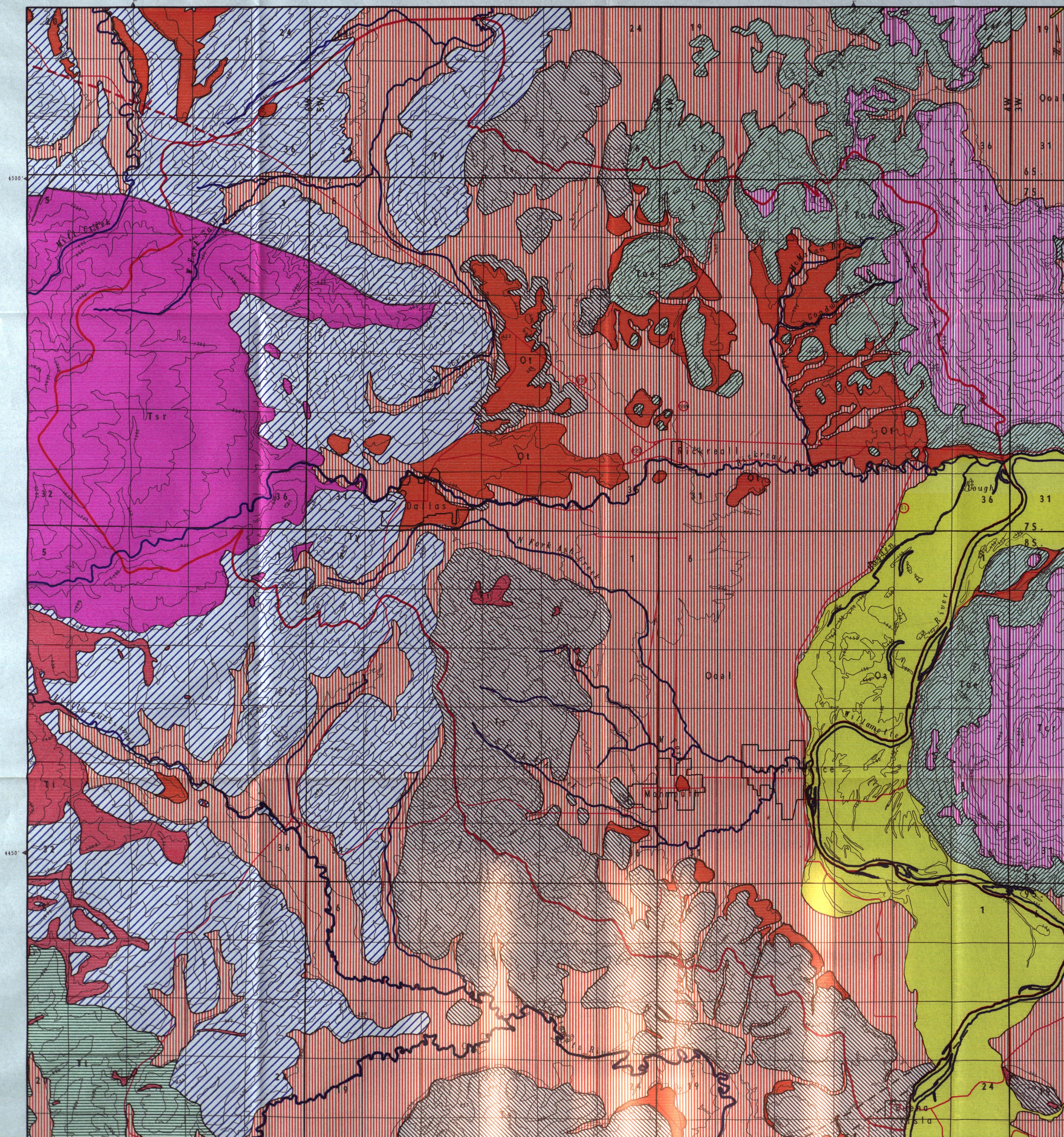


GEOLOGY OF THE DALLAS-MONMOUTH AREA, OREGON



EXPLANATION

- Recent river alluvium (Holocene)
- Older alluvium (Holocene and Pleistocene)
- High terrace and alluvial fan deposits (Holocene and Pleistocene)
- Columbia River Basalt Group Grande Ronde Formation (Miocene)
- Undifferentiated Eocene-Oligocene Sed. Rock (Late Eocene to Oligocene)
- Spencer Formation (Late Eocene)
- Yamhill Formation (Middle to Late Eocene)
- Tyee Formation (Middle Eocene)
- Siletz River Volcanics (Early to Middle Eocene)
- Intrusive rocks (Oligocene)

—•— Fault; dashed when concealed or inferred; ball and bar on downthrown side

---+--- Anticline

— Boundary of study area

0 1 2 3 4 5 Miles
0 1 2 3 4 5 Kilometers

Scale 1:62500

CONTOUR INTERVALS 50, 100, 200 AND 400 FEET

PLATE II Geologic map of the Dallas-Monmouth area, Polk County, Oregon

Geology modified from Baldwin and others (1955), Baldwin (1964), Bela (1981), Brownfield (1982a and b), Brownfield and Schlicker (1981) and Gonther (1983), Yeats and others (1991)